



WAREMA

External venetian blinds

Design rooms with light and shade.

Der SonnenLichtManager





WAREMA external venetian blinds


Your room climate for a better quality of life

Would you like to control the sunlight in your home based on your personal preferences and the time of day? Do you want to create unique lighting accents? And ensure a pleasant indoor climate to feel good, even on hot days?

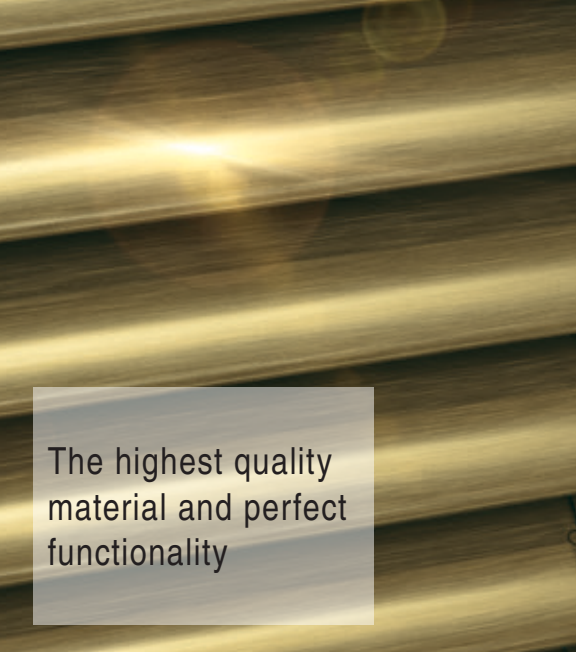
Look forward to external venetian blinds from WAREMA. They keep the heat out and let the light in exactly how you like it. With WAREMA external venetian blinds, you can create exactly the lighting mood you want: whether it be bright and bathed in sunlight, indirect and glare-free light for a pleasant work atmosphere or dimmed for relaxation and a higher degree of privacy.

As the market leader, we at WAREMA have been developing high-grade and design-oriented external venetian blind solutions for over 50 years. For new buildings and renovations: our systems can be seamlessly integrated into any building facade. For a real boost to your quality of life and maximum energy efficiency.


Discover the world of WAREMA external venetian blinds.



Large selection of colours for slats and powder-coated aluminium parts



The highest quality material and perfect functionality



Convenient controls

WAREMA external venetian blinds for your new building

Perfect sun shading right from the start



External venetian blinds for your new building

Especially for new buildings, topics like climate control, heat protection, glare control, dim-out, view out and visual privacy from the outside are important factors in your planning process.

WAREMA external venetian blinds fulfil all requirements in terms of energy efficiency and modern design. Customised slat geometries provide the right solution for achieving your desired sun shading effect. Enjoy daylight and your privacy in equal measure. With WAREMA external venetian blinds, you can create an always-comfortable atmosphere in your home.

Inspirations



Hidden cover panel
**External venetian
blind window
system**



Hidden cover panel
**Top-mounted
external venetian
blind**

WAREMA external venetian blinds

For any installation situation

Hidden cover panel

With its clean design, this external venetian blind installation variant blends seamlessly with the facade. The slats create contrasting optical accents – matching your architectural style. Take advantage of the attractive design freedom offered by external venetian blinds with hidden cover panels.

External venetian blind window system

	Max. width	Max. height	Max. area
<i>Seamless integration in the facade</i>	4.0 m	4.0 m	16.0 m ²

Top-mounted external venetian blind

	Max. width	Max. height	Max. area
<i>Tested top-mounted units in terms of heat and sound insulation</i>	4.0 m	4.0 m	16.0 m ²

Shaft external venetian blind

	Max. width	Max. height	Max. area
<i>As pre-mounted subassembly for installation in existing shafts/lintel boxes</i>	4.0 m	4.0 m	16.0 m ²



1 Cover panels

The different types of cover panels (visible or hidden) protect external venetian blinds from wind and weather when raised

2 Guide variants

The tension cable and rail guidances from WAREMA blend discreetly into your facade. Shape, colour and installation method can be customised

3 Slat geometries

The optimum slat shape for your requirements (beaded slats, dim-out slats, flat slats). The new Zetra slat: straight modern lines. Uniquely flexible.

4 Corner joint for all-glass corners

Slender corner joints on the slats enable a full view out without annoying guidance elements (rail or tension cable) on the corner

Visible cover panel

The installation of external venetian blinds with visible cover panels which can be used flexibly gives your house a unique character and ensures optimal energy efficiency by avoiding thermal bridges. The cover panel is mounted on the facade and creates stylish design accents with powder-coated aluminium parts that match your facade. Attractive cover panel shapes and a wide selection of colours are available to you. We also fulfil every wish when it comes to finishes: satin finish, matt, fine texture or highly weather-resistant.

Basic external venetian blind	Max. width	Max. height	Max. area
<i>Easy to integrate into almost any facade</i>	5.0 m	5.0 m	25 m ²
Front-mounted external venetian blind	Max. width	Max. height	Max. area
<i>Compact design even with limited space available on-site in the lintel area</i>	4.0 m	4.0 m	16.0 m ²
Asymmetrical external venetian blind	Max. width	Max. height	Max. area
<i>Perfect solution for architecturally demanding window shapes</i>	2.5 m	3.9 m	7 m ²



5 Colour selection

Select your desired shade for slats and aluminium parts from the collection and the WAREMA Colour World
NEW: Now also matt colours for slats

6 Control

Conveniently operable via WMS radio remote control or WAREMA climatronic®

Ⓜ = Motor

7 Integrated insect screen

Available to match external venetian blind as combinable roller blind, pleated blind, or swivel, sliding or swing door

8 ProVisio technology

Improved visual privacy from the outside with a simultaneously optimised view out from the inside

9 SenSigna acoustic early warning system

SenSigna detects unusual movements and sounds an alarm (approx. 90 dB), e.g. in the case of a break-in

Retrofit WAREMA external venetian blinds

For modernisation to suit your requirements



External venetian blinds
for your renovation

Enhance your property architecturally and functionally

Retrofitting your property with external venetian blinds is not just an investment in greater energy efficiency; with WAREMA, it becomes a whole new living experience. Choose external venetian blinds for renovation and modernisation exactly according to your wishes – made in the dimensions you need with impressive quality thanks to first class materials. Here you can choose between dim-out external venetian blinds, self-supporting or wind-stable models or the innovative external venetian blinds with ProVisio. Enhance your sun shading system with the integrated fall protection VisioNeo for floor-to-ceiling windows.

Inspirations



Visible cover panel
Asymmetrical
external venetian
blind
Front-mounted
external venetian
blind



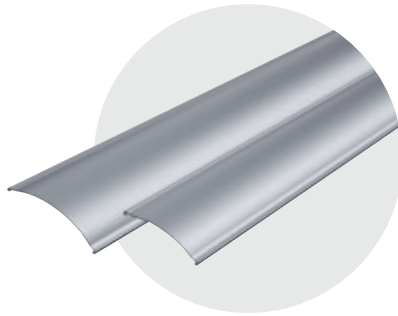
Combination visible
and hidden cover
panel
Basic external
venetian blind



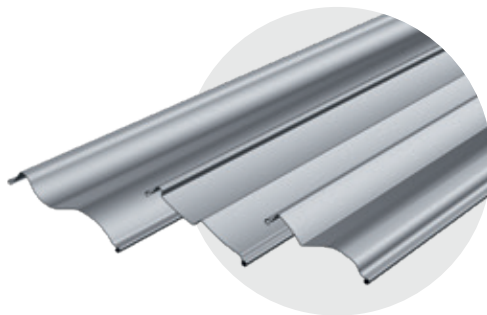
WAREMA external venetian blinds

Slat geometry for all uses

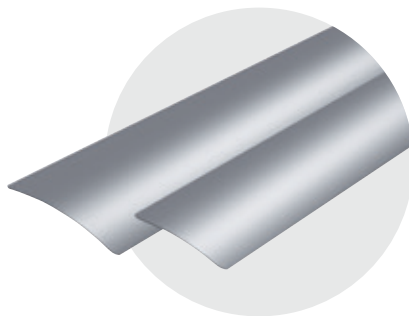
At first glance, all external venetian blind slats look the same. But with a closer look, you will learn to recognise and appreciate some key differences. Because as an expert, WAREMA has developed special slats – optimally tailored to the use and your preferences.



Beaded slats



Dim-out slats
NEW! Zetra slat



Flat slats

Beaded slats

The classic 80 S is the most popular and most installed slat in residential buildings. The balanced combination of wind stability, flexibility and a view out make this geometry unique.

Dim-out slats

Ensure a reduced incidence of light for e.g. bedrooms or children's rooms – perfect daylight utilisation during the day and a perfect dim-out effect at night.

NEW! Zetra slat

With its linear geometry, the Zetra slat perfectly embodies the current architectural trends and impresses with its improved functionality in terms of dim-out capability, wind stability and room illumination.

Flat slats

Their slender design makes them particularly suitable for small window sizes. They create an excellent view out and require very little space thanks to their minimal cover panel height.

NEW! External venetian blind/roller shutter collection

Trendy matt colours for slats:
www.warema.com/evb

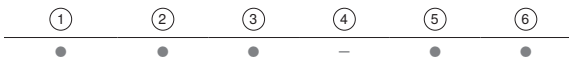
WAREMA external venetian blinds

The features make all the difference



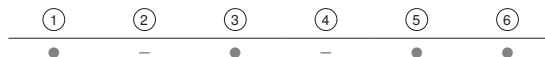
SenSigna: safe early warning system

SenSigna detects unusual movements of the external venetian blind, e.g. in an attempted break-in, and immediately emits an acoustic signal. The alarm sounds before the window is damaged with a signal strength of approx. 90 decibels. SenSigna is integrated unobtrusively into the external venetian blind end rail. Simple retrofitting is possible.



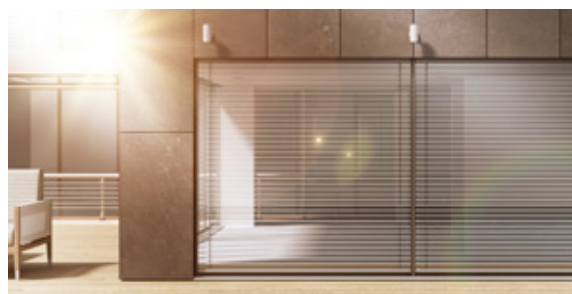
ProVisio: visual privacy and a view out perfectly combined

An external venetian blind with ProVisio (right half of image) keeps more than just heat and glaring sunrays out. Thanks to the different angles of the slats that are designed to mimic the angle of human sight, it also protects against prying eyes – while maintaining an excellent view out.



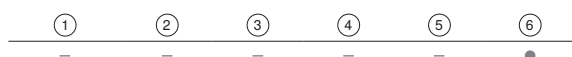
Insect screen, pollen and fine dust protection

The clever insect screen and pollen and fine dust protection from WAREMA can not only be integrated into existing sun shading solutions, but also fits unusual window shapes. The innovative WAREMA VisionAir pollen protection and fine dust gauze effectively filter the finest airborne particles from the breathable air and make being at home an unimpaired pleasure for allergy sufferers.



Minimax guide rails: for slim building architecture

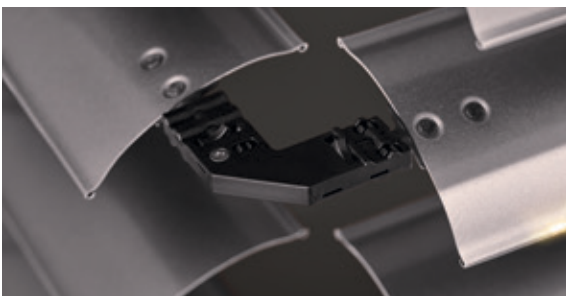
For a discreet appearance, the Minimax guide rails with a reduced face width can be used. The reduced width means they are an ideal solution for more generous facades with all-glass elements. Depending on the installation situation, the Minimax guide rails can also be fully plastered and almost disappear into the facade.





STM – Super-fast terrace motor

The super-fast terrace motor clears patio and balcony doors with triple the processing speed in under 20 seconds. The tilting of the slats is unaffected.



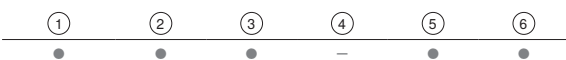
Corner joint for all-glass corners

External venetian blinds in corner positions can now also be designed without an obstructive guidance on the corner using corner joints on the slats – for an unobstructed view of the modern all-glass corner when the external venetian blinds are raised.



WAREMA climatronic® with slat tracking

The WAREMA climatronic® coordinates your sun shading, the temperature and the light for a consistently perfect room climate. One special feature here is the slat tracking based on the sun's position. The control system tracks the sun's position and angle, moving the slats accordingly – for consistently glare-free daylight.



Digital assistant

Extra comfort...



...during planning & design

Easily and effortlessly find the right external venetian blinds to fulfil all your requirements with the help of the digital WAREMA configurator:

www.warema.com/configuration

Smart sun shading system with WMS radio system

With individual automation, the intelligent WMS radio remote control creates the perfect feel-good climate based on time of day, position of the sun and weather conditions. Operate your sun shading system via hand-held transmitter or wall-mounted transmitter or from anywhere via app with WMS WebControl pro.

Or operate your entire home (sun shading, light, heating and more) via just one app. You thus always have an overview of all devices and can comfortably operate them from anywhere – thanks to WMS and homee.

www.warema.com/control-systems

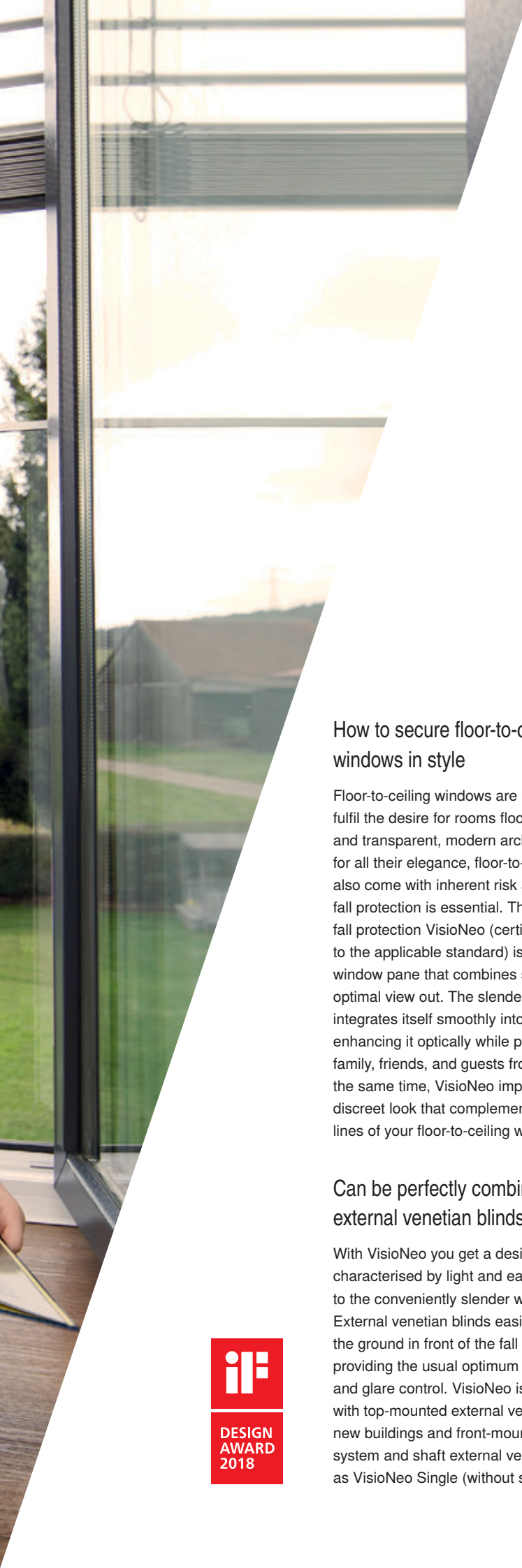


- ① External venetian blind window systems
- ② Front-mounted external venetian blinds
- ③ Top-mounted external venetian blinds
- ④ Asymmetrical external venetian blinds
- ⑤ Shaft external venetian blinds
- ⑥ Basic external venetian blinds

Integrated fall protection VisioNeo for external venetian blinds

Secure floor-to-ceiling windows in style





How to secure floor-to-ceiling windows in style

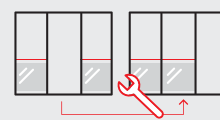
Floor-to-ceiling windows are in vogue. They fulfil the desire for rooms flooded with light and transparent, modern architecture. But for all their elegance, floor-to-ceiling windows also come with inherent risk and effective fall protection is essential. The WAREMA fall protection VisioNeo (certified according to the applicable standard) is an integrated window pane that combines safety with an optimal view out. The slender window pane integrates itself smoothly into your facade, enhancing it optically while protecting your family, friends, and guests from falling. At the same time, VisioNeo impresses with a discreet look that complements the clear lines of your floor-to-ceiling windows.

Can be perfectly combined with external venetian blinds

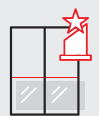
With VisioNeo you get a design that is characterised by light and ease – thanks to the conveniently slender window pane. External venetian blinds easily lower to the ground in front of the fall protection, providing the usual optimum sun shading and glare control. VisioNeo is combinable with top-mounted external venetian blind for new buildings and front-mounted, window system and shaft external venetian blinds or as VisioNeo Single (without sun shading).



Fall protection with view out Fall protection VisioNeo



Application examples



Modern design



Planning



Safety

Choose safety!

All the benefits at a glance:

www.warema.com/visioneo

Just a few steps to your external venetian blinds



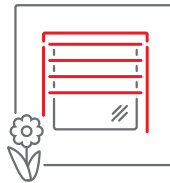
1

Product configuration and appointment scheduling



2

Showroom and consultations



3

Ordering and installation

For more information please contact your WAREMA specialist dealer.

WAREMA International GmbH
Dillberg 14 • 97828 Marktheidenfeld • Germany
www.warema.com

Find us here:



2043979/06.2021_EN.Int
Printing errors, changes and deviations from the technical specifications and product presentation are possible due to the individual structural conditions and apply to all the products included in this brochure.