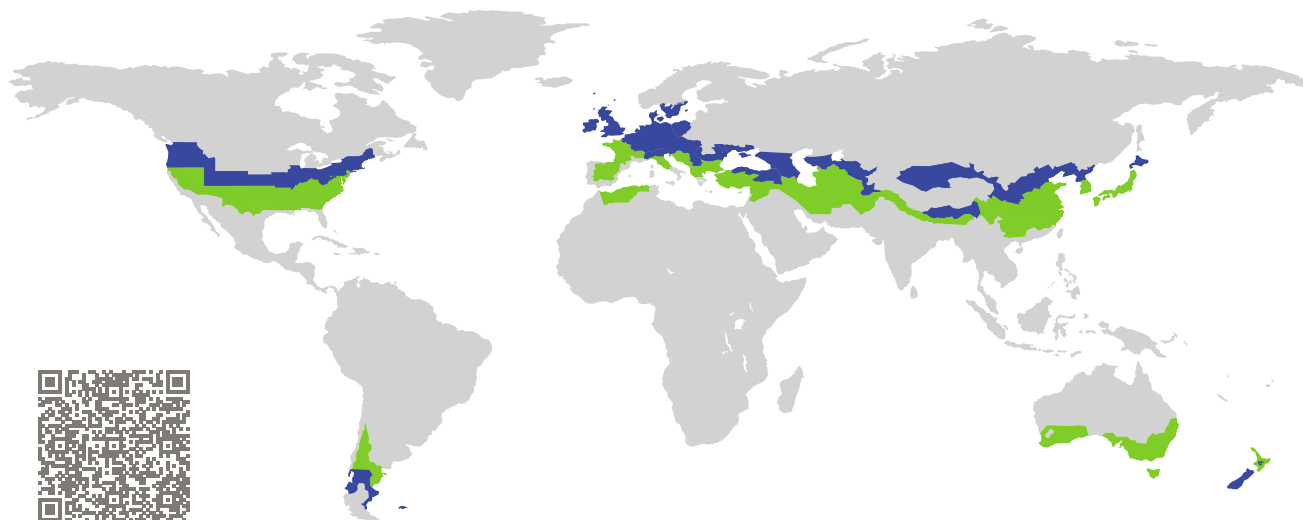


CERTIFICATE

Certified Passive House Component

Component-ID 0905ws03 valid until 31st December 2022

Passive House Institute
Dr. Wolfgang Feist
64283 Darmstadt
Germany

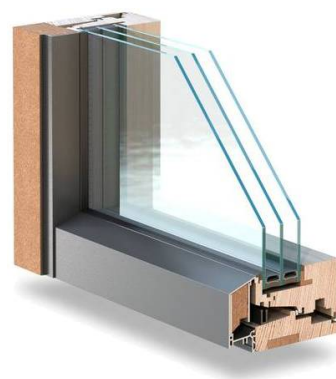


Category: **Window system**
Manufacturer: **pro Passivhausfenster GmbH,
Oberaudorf,
Germany**
Product name: **smartwin**

**This certificate was awarded based on the following
criteria for the cool, temperate climate zone**

Comfort $U_W = 0.77 \leq 0.80 \text{ W}/(\text{m}^2 \text{ K})$
 $U_{W,\text{installed}} \leq 0.85 \text{ W}/(\text{m}^2 \text{ K})$
with $U_g = 0.70 \text{ W}/(\text{m}^2 \text{ K})$

Hygiene $f_{Rsi=0.25} \geq 0.70$
Airtightness $Q_{100} = 0.11 \leq 0.25 \text{ m}^3/(\text{h m})$



cool, temperate climate



**CERTIFIED
COMPONENT**

Passive House Institute

Passive House
efficiency class

phE

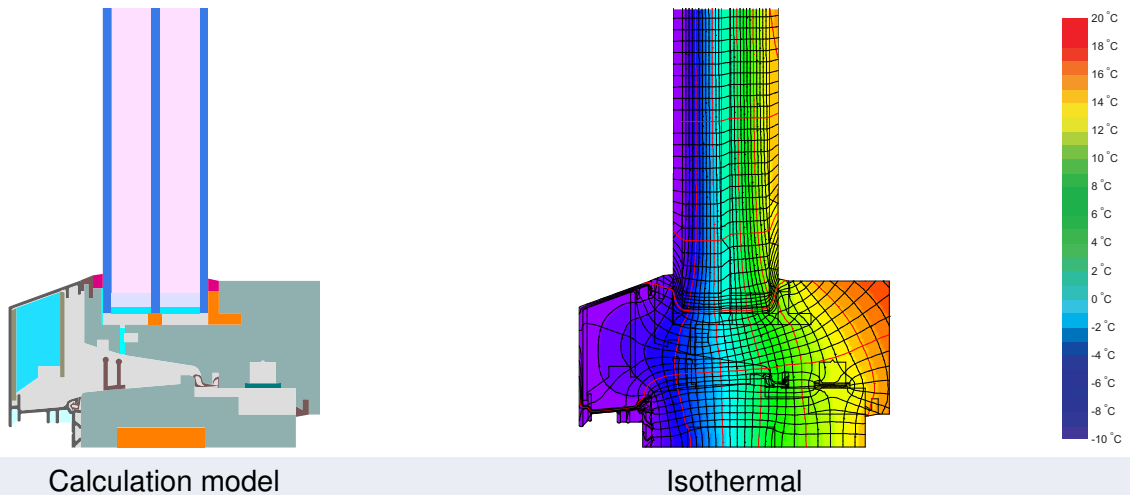
phD

phC

phB

phA

www.passivehouse.com



Description

Aluminum clad timber frame (Spruce/Fir, 0.11 W/(mK)), insulated by low dense timber-faser board (0,05 & 0,04 W/(mK)) & PU insulation (0,03 W/(mK)). Glazing: 4/18/4/18/4, Glass intersection: 15 mm Q100 = 0,11 m²/mh tested at a two-sash window with flying mullion (200 * 260 cm) Pane thickness: 48 mm (4/18/4/18/4), rebate depth: 15 mm, spacer: SWISSPACER Ultimate with polyurethane as secondary seal.

Explanation

The window U-values were calculated for the test window size of 2.46 m × 1.48 m with $U_g = 0.70$ W/(m² K). If a higher quality glazing is used, the window U-values will improve as follows:

Glazing	$U_g =$	0.70	0.64	0.58	0.52	W/(m ² K)
		↓	↓	↓	↓	
Window	$U_w =$	0.77	0.72	0.67	0.62	W/(m ² K)


Transparent building components are classified into efficiency classes depending on the heat losses through the opaque part. The frame U-Values, frame widths, thermal bridges at the glazing edge, and the glazing edge lengths are included in these heat losses. A more detailed report of the calculations performed in the context of certification is available from the manufacturer.

The Passive House Institute has defined international component criteria for seven climate zones. In principle, components which have been certified for climate zones with higher requirements may also be used in climates with less stringent requirements. In a particular climate zone it may make sense to use a component of a higher thermal quality which has been certified for a climate zone with more stringent requirements.

Further information relating to certification can be found on www.passivehouse.com and passipedia.org.

Frame values			Frame width b_f mm	U -value frame U_f W/(m ² K)	Ψ -glazing edge Ψ_g W/(m K)	Temp. Factor $f_{Rsi=0.25}$ [-]
Top	(to)		67	0.71	0.021	0.75
Side	(s)		67	0.71	0.021	0.75
Bottom	(bo)		76	0.93	0.020	0.72
Top fixed	(tof)		67	0.53	0.021	0.76
Side fixed	(sf)		67	0.53	0.021	0.76
Bottom fixed	(bof)		76	0.72	0.020	0.74
Threshold	(th)		76	0.97	0.020	0.72
Door side	(sh)		142	0.72	0.020	0.73
Mullion flying	(fm)		110	0.73	0.020	0.74
Mullion fixed	(m)		110	0.62	0.021	0.74
Mullion 1 casement	(m1)		110	0.73	0.021	0.73
Mullion 2 casements	(m2)		142	0.71	0.021	0.74
Transom fixed	(tf)		110	0.79	0.020	0.71
Transom 1 casement	(t1)		110	0.90	0.020	0.71
Transom 2 casements	(t2)		142	0.92	0.020	0.71

Spacer: SWISSPACER Ultimate Secondary seal: Polyurethan



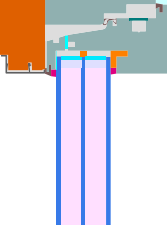
Top

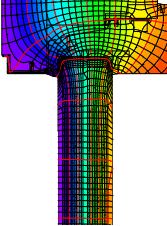
$b_f = 67.00$ mm

$U_f = 0.71$ W/(m² K)

$\Psi_g = 0.021$ W/(m K)

$f_{Rsi} = 0.75$







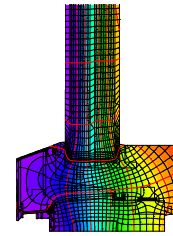
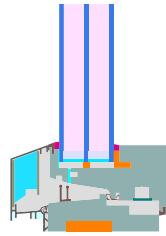
Bottom

$$b_f = 76.00 \text{ mm}$$

$$U_f = 0.93 \text{ W}/(\text{m}^2 \text{ K})$$

$$\Psi_g = 0.020 \text{ W}/(\text{m K})$$

$$f_{Rsi} = 0.72$$



Top

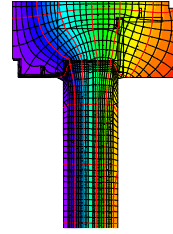
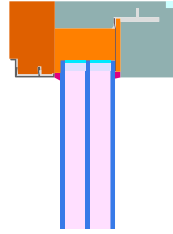
fixed

$$b_f = 67.00 \text{ mm}$$

$$U_f = 0.53 \text{ W}/(\text{m}^2 \text{ K})$$

$$\Psi_g = 0.021 \text{ W}/(\text{m K})$$

$$f_{Rsi} = 0.76$$



Bottom

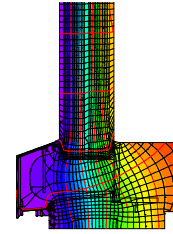
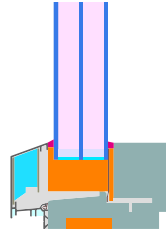
fixed

$$b_f = 76.00 \text{ mm}$$

$$U_f = 0.72 \text{ W}/(\text{m}^2 \text{ K})$$

$$\Psi_g = 0.020 \text{ W}/(\text{m K})$$

$$f_{Rsi} = 0.74$$



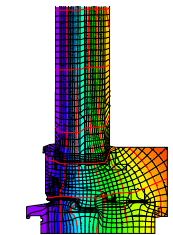
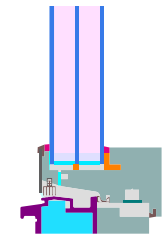
Threshold

$$b_f = 76.00 \text{ mm}$$

$$U_f = 0.97 \text{ W}/(\text{m}^2 \text{ K})$$

$$\Psi_g = 0.020 \text{ W}/(\text{m K})$$

$$f_{Rsi} = 0.72$$



Door

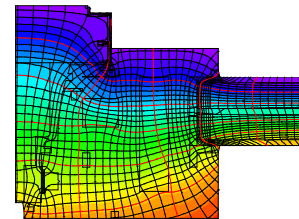
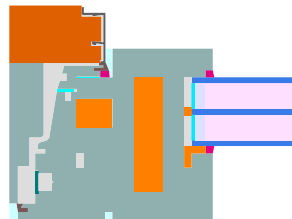
side

$$b_f = 142.00 \text{ mm}$$

$$U_f = 0.72 \text{ W}/(\text{m}^2 \text{ K})$$

$$\Psi_g = 0.020 \text{ W}/(\text{m K})$$

$$f_{Rsi} = 0.73$$





Mullion

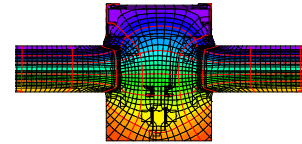
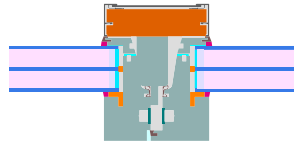
flying

$$b_f = 110.00 \text{ mm}$$

$$U_f = 0.73 \text{ W}/(\text{m}^2 \text{ K})$$

$$\Psi_g = 0.020 \text{ W}/(\text{m K})$$

$$f_{Rsi} = 0.74$$



Mullion

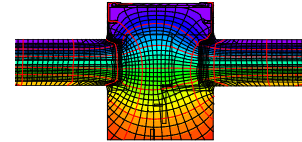
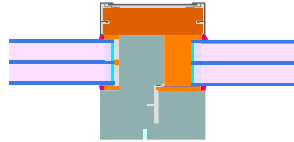
fixed

$$b_f = 110.00 \text{ mm}$$

$$U_f = 0.62 \text{ W}/(\text{m}^2 \text{ K})$$

$$\Psi_g = 0.021 \text{ W}/(\text{m K})$$

$$f_{Rsi} = 0.74$$



Mullion

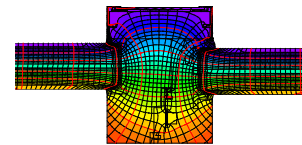
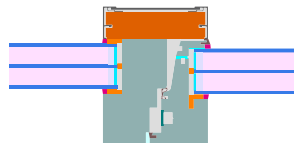
1 casement

$$b_f = 110.00 \text{ mm}$$

$$U_f = 0.73 \text{ W}/(\text{m}^2 \text{ K})$$

$$\Psi_g = 0.021 \text{ W}/(\text{m K})$$

$$f_{Rsi} = 0.73$$



Mullion

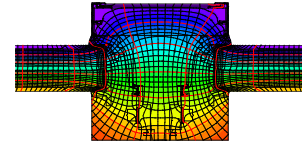
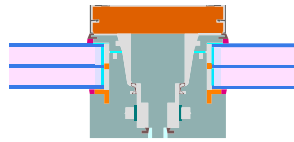
2 casements

$$b_f = 142.00 \text{ mm}$$

$$U_f = 0.71 \text{ W}/(\text{m}^2 \text{ K})$$

$$\Psi_g = 0.021 \text{ W}/(\text{m K})$$

$$f_{Rsi} = 0.74$$



Transom

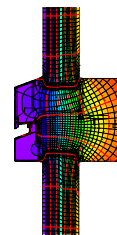
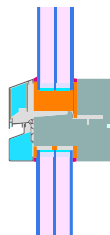
fixed

$$b_f = 110.00 \text{ mm}$$

$$U_f = 0.79 \text{ W}/(\text{m}^2 \text{ K})$$

$$\Psi_g = 0.020 \text{ W}/(\text{m K})$$

$$f_{Rsi} = 0.71$$





Transom

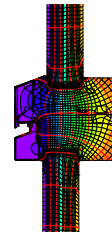
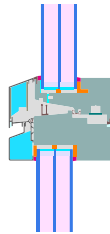
1 casement

$$b_f = 110.00 \text{ mm}$$

$$U_f = 0.90 \text{ W/(m}^2 \text{ K)}$$

$$\Psi_g = 0.020 \text{ W/(m K)}$$

$$f_{Rsi} = 0.71$$



Transom

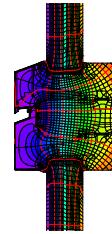
2 casements

$$b_f = 142.00 \text{ mm}$$

$$U_f = 0.92 \text{ W/(m}^2 \text{ K)}$$

$$\Psi_g = 0.020 \text{ W/(m K)}$$

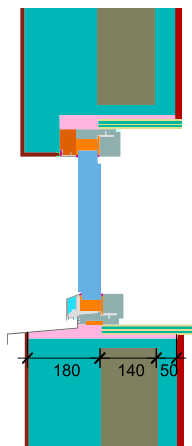
$$f_{Rsi} = 0.71$$



Validated installations

Formwork blocks (fixed)

$$U_{Wall} = 0.15 \text{ W/(m}^2 \text{ K)}$$

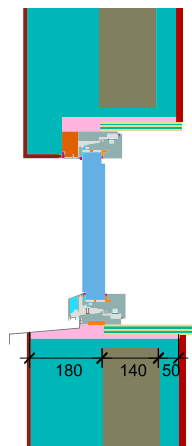


$\Psi_{install}$	W/(m K)
Top	0.005
Left	0.005
Right	0.005
Bottom	0.022

$$U_{W,installed} = 0.79 \text{ W/(m}^2 \text{ K)}$$

Formwork blocks (operable)

$$U_{Wall} = 0.15 \text{ W/(m}^2 \text{ K)}$$

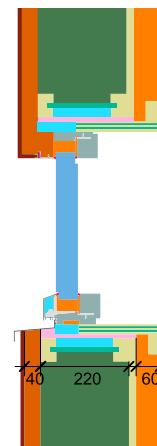


$\Psi_{install}$	W/(m K)
Top	0.006
Left	0.006
Right	0.006
Bottom	0.024

$$U_{W,installed} = 0.79 \text{ W/(m}^2 \text{ K)}$$

Lightweight timber (fixed glazed)

$$U_{Wall} = 0.13 \text{ W/(m}^2 \text{ K)}$$



$\Psi_{install}$	W/(m K)
Top	0.015
Left	0.015
Right	0.015
Bottom	0.024

$$U_{W,installed} = 0.81 \text{ W/(m}^2 \text{ K)}$$

Lightweight timber (operable)

$U_{Wall} = 0.13 \text{ W}/(\text{m}^2 \text{ K})$

$\Psi_{install}$	W/(m K)
Top	0.015
Left	0.015
Right	0.015
Bottom	0.023

$U_{W,installed} = 0.81 \text{ W}/(\text{m}^2 \text{ K})$

Threshold balcony door

$U_{Wall} = 0.13 \text{ W}/(\text{m}^2 \text{ K})$

$\Psi_{install}$	W/(m K)
Top	
Left	
Right	
Bottom	0.014

$U_{W,installed} = \text{W}/(\text{m}^2 \text{ K})$

Exterior insulation and finishing system (EIFS) (fixed glazed)

$U_{Wall} = 0.13 \text{ W}/(\text{m}^2 \text{ K})$

$\Psi_{install}$	W/(m K)
Top	0.003
Left	0.003
Right	0.003
Bottom	0.021

$U_{W,installed} = 0.79 \text{ W}/(\text{m}^2 \text{ K})$

Exterior insulation and finishing system (EIFS) (operable)

$U_{Wall} = 0.13 \text{ W}/(\text{m}^2 \text{ K})$

$\Psi_{install}$	W/(m K)
Top	0.005
Left	0.005
Right	0.005
Bottom	0.022

$U_{W,installed} = 0.79 \text{ W}/(\text{m}^2 \text{ K})$

Exterior insulation and finishing system (EIFS) side (operable)

$U_{Wall} = 0.13 \text{ W}/(\text{m}^2 \text{ K})$

$\Psi_{install}$	W/(m K)
Top	
Left	
Right	
Bottom	

$U_{W,installed} = \text{W}/(\text{m}^2 \text{ K})$

