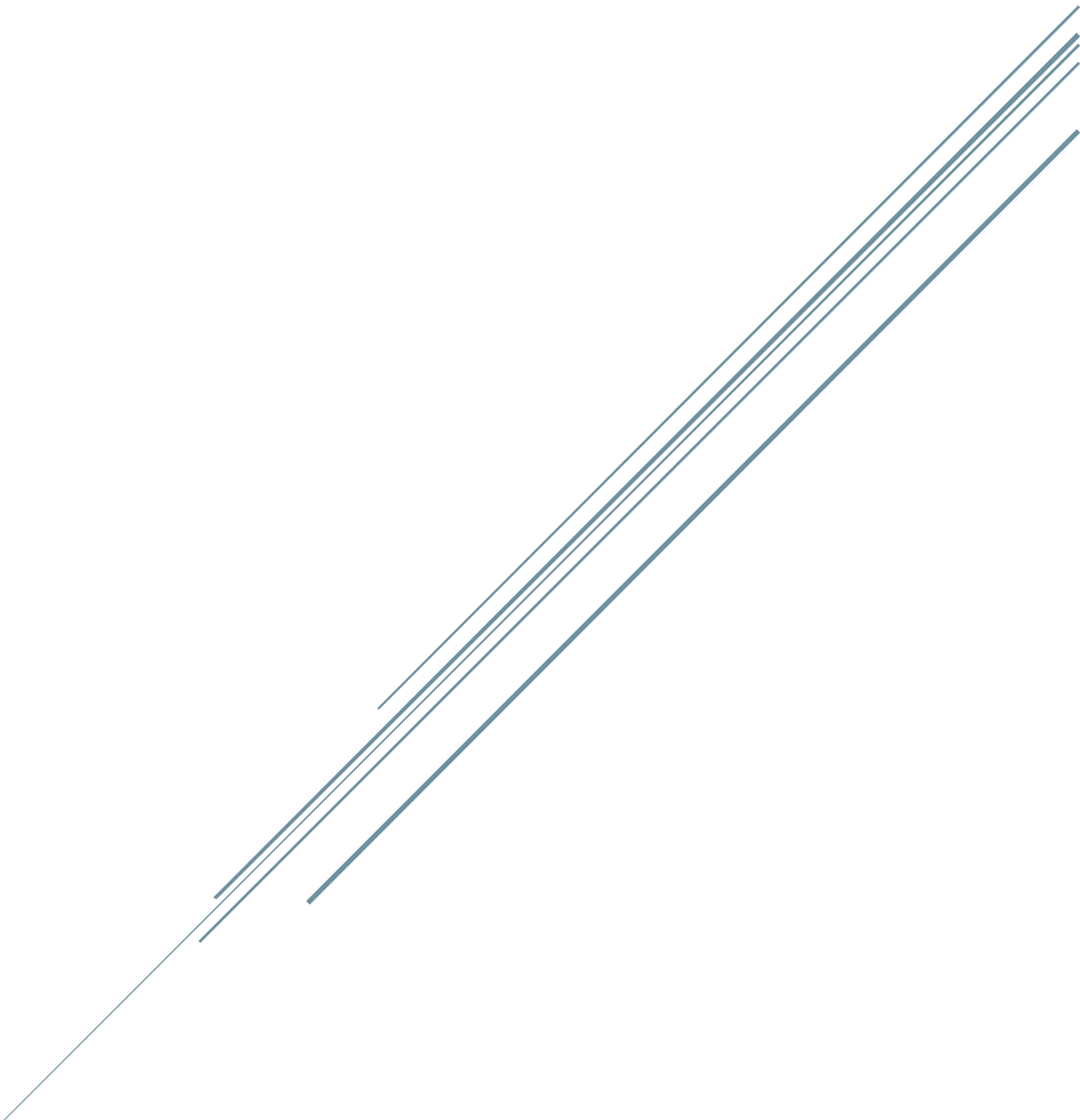


4ILLUMINATION

Lighting Design and Specifications



Dallas, TX

4illumination

A premier lighting source for residential and commercial led lighting and controls, products in Texas. We are here to bring you design assistance from product selection to custom fixture development.

4illumination Duties and Responsibilities

In order to design the lighting in a given space, we perform many different tasks. Visit Project Sites In order to effectively design lighting systems for a given site, 4illumination must travel to the site to assess and analyze it. They also communicate extensively with the customer while there to identify their desires and needs.

Design Lighting

After adequately assessing a project site, 4illumination designs a lighting plan for the site according to customer specifications, the assessment of the site itself and safety concerns including state and local energy and building codes. During the design process, they act as a liaison between the client and engineering departments, balancing client desires and aesthetics with practical concerns.

Manage Budget

4illumination must pay attention to the budget of their project. Usually they are working within the financial constraints of their client, so they need to make sure as they are designing a lighting system that it remains within the client's budget. They collect all receipts for expenses in order to track budget.

Install Lighting

Once their designs are approved, 4illumination joins a team of people to go back to the site and install the lighting and electrical systems they've designed. They hang and focus all lighting devices and install proper electrical lines to power the lighting system.

Lighting Designer Skills

Lighting Designers are knowledgeable and experienced professionals who know how to deal with the intricacies of designing and installing electrical systems. They are organized multi-taskers who can juggle multiple clients at once. Both analytical and creative, successfully solving problems while also designing lighting systems that meet the aesthetic and design needs of their clients.



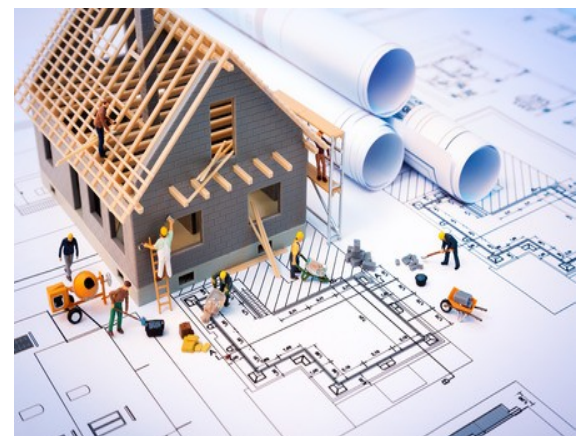
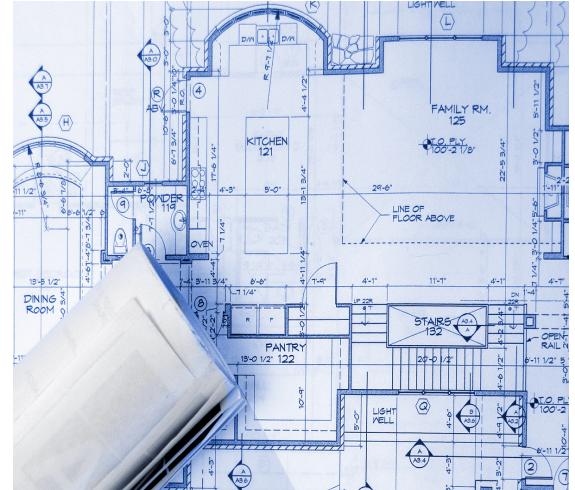
Light sets the scene, drives the action, leads the eye, and suggests the mood. Clients live, play, and work within these spaces. It is an art to create vibrant, dynamic lighting effects that evoke emotion and support activity.

The firm draws from a palette of sources and luminaries and works within the architecture to create a composition in perfect harmony with its surroundings.

As a company, expertise in lighting design coupled with an extensive knowledge of current lighting technologies is one of our best assets to a client.

In a rapidly changing market, we can provide information and options for high energy efficiency without sacrificing character from the lighting design.

With a vast knowledge of lighting automation systems, we can ensure that the design will be as simple to use as it is beautiful.



LED Lighting technology has guided design in the last decade, and shows no signs of slowing down.

The long-lasting, compact size of LEDs allow for a wide range of design possibilities, from minimalist bath lighting to avant-garde chandeliers to brighter, better desk lamps.

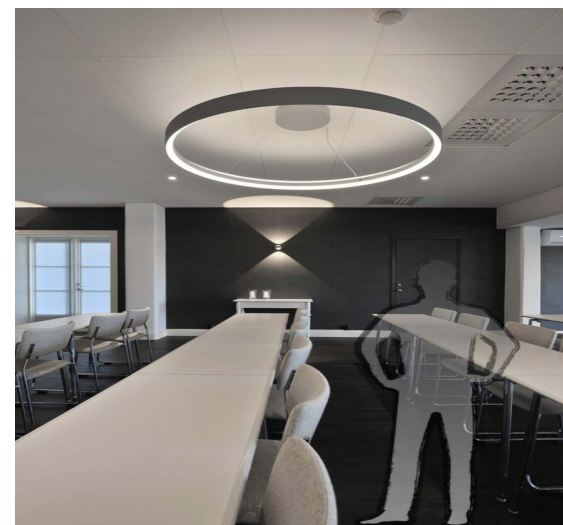
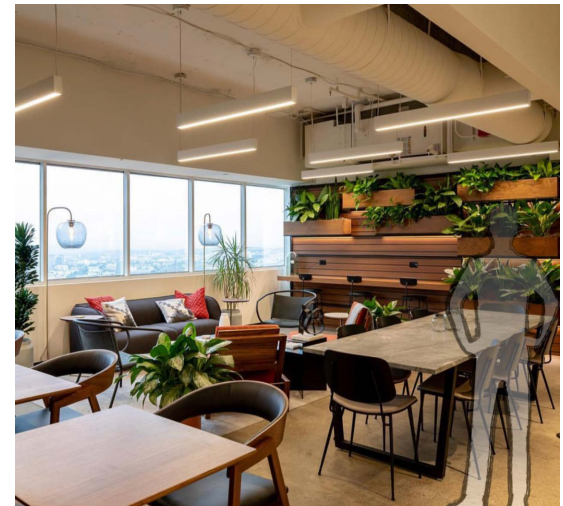
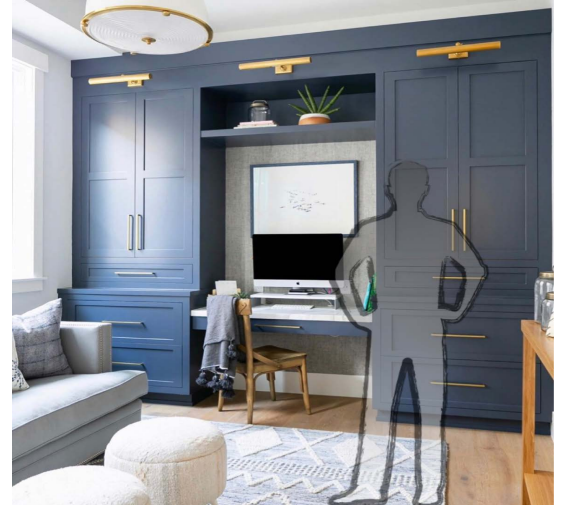
These LED lighting ideas will bring inspiration and more for welcoming advanced lighting technology into your home.

At the end of the day, the technology behind LEDs—the diodes themselves, heat sinking and so on—allows them to extensively outlast incandescent bulbs.

Some LEDs can last two decades (or even longer) with average use before they begin to dim, as opposed to an approximate two year life for incandescents. LEDs also experience more of a gradual decline than the sudden burnout experienced with incandescents.

LEDs come in a range of light color temperatures. Every lightbulb has a Correlated Color Temperature (CCT), which corresponds to a Kelvin (K) temperature scale. The lower the number of Kelvins, the warmer and more yellow the light is. The higher the Kelvins, the cooler and bluer the light.

Deciding what light color to have where is a matter of personal preference. Light color that’s “natural white” or “cool white” are great choices for general ambient light. They also work well for the kitchen. Bluer, more natural light or “daylight” bulbs would be best suited for your bedside reading lamp.



4illumination is a solutions company

We know great lighting and more importantly how to avoid the over priced mark ups of architectural agencies.

With our knowledge and capability to deliver a blend of manufactures not limited to a line card. We know that a budget at any level has it's limitations.

We are here to offer our experience in all areas of residential, lite-commercial, and multi family design and distribution.

Our goals to provide ever customer a lighting design and that pairs with the interior design.

Lighting with a purpose brings together every layer of the materials and lifestyle we all have seen in a real life achievable package.



Planning with knowledge of all great tools with create more than just a functional illuminated environment.

Architectural performance features in a simple but versatile package for residential and commercial applications alike

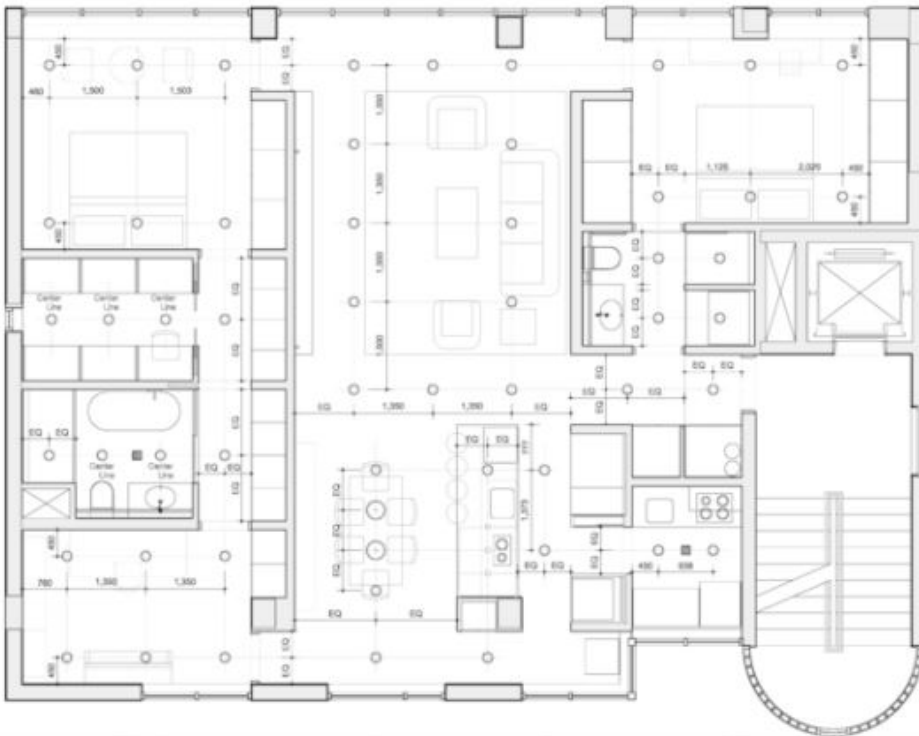
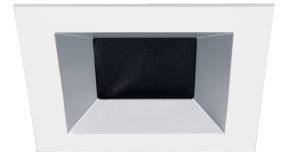
Down Light, Adjustable, Pinhole, Wall Wash.

Compatible with Standard and Dim to Warm Architectural housings

Adjustable LED light engine included with housing: Vertical Adjustment 0-30°, Horizontal Adjustment 365°

Field interchangeable beam optics included with housing

2700K, 3000K, 3500K, or 4000K or 1800-3000K Color Temperature options available with housing LED light engine



INDIRECT

DIRECT

DISPLAY

TASK

SECURITY

AMBIENT



Not only are can lights used for general room lighting, recessed lighting can be used for accent lighting depending on where you place them.

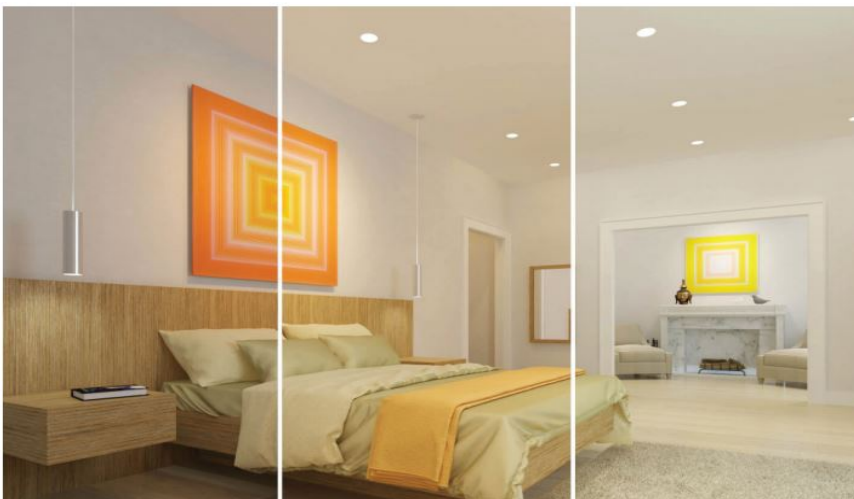
Place them in your ceiling or in your floor close to the wall to create a wall washing affect to illuminate a beautiful brick texture, a colorful paint design or as a functional point of light to focus attention on a specific location.

Without asking any questions we can assume we all live in in little square boxes with no real focus on how we live in these areas.

4illumination rethinks the way a "recessed" product is to be used in a home or office.

These tools we use are powerful elements of every space. We know we need illumination. but did we ask the right questions about how you are, how you live, where you work.

Flexibility is key to any great lightning project. Combining adjustable angels, dimming, control over zones, and color control recessed lighting in any format can make or break a project.



Elevate your space and upgrade your control. Take comfort in the convenience of controlling your smart lighting system from any smart device to set the exact lighting you need - from anywhere.

With advanced capabilities including voice and app control, scheduling, and compatibility with leading smart products, smart lighting solutions deliver the safety, comfort, and convenience your family requires.

From the smartest dimmer switch and the fastest USB outlet, to a host of decorative wall plates, perfect for any taste, every device in the our collection aims to make life a little easier with extraordinary style.

4illumination has partnered with the leaders in residential and commercial lighting control systems.

Voice-activated commands allow you to go hands-free, tapping into Amazon's Alexa or Google Assistant when your hands are full.

Room scenes are programmable settings that let you create a mood with a simple swipe, tap or voice command.

Motion-activated controls serve as helpful guides in the hallway or bathroom, when lighting your way in the middle of the night is crucial.

Vacation mode utilizes machine learning, turning your lights on and off automatically when you're away to mimic your typical routine and give the impression that someone is home.

Control from afar, no matter where you are, you can see if the lights were left on, turn them all off or switch on vacation mode with one simple tap on your smartphone or tablet.



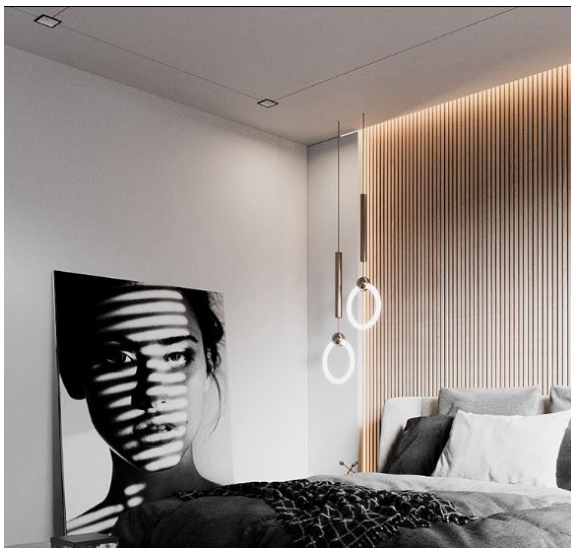
Lighting can effectively improve each and every space

Lighting in it's form can make or break a project.

We want everyone to look at lighting first in their design.

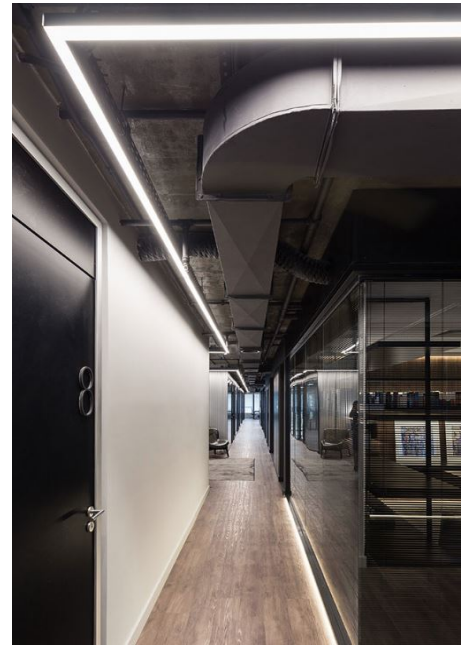
Consider how a space will be altered during a specific time of day or season.

4illumination has a vision to bring joy, energy, and relaxation to any project.



4illumination.com

We spend our lives in an environment that should bring out the best of our abilities. Enjoyable work spaces energize members to achieve great things.



469.585.8720

DOUGLAHOURCADE@GMAIL.COM

DOUG LAHOURCADE



Different lighting levels can be used in order to set the mood of your restaurant or bar. This means that customers can either be drawn into your establishment or put off by it simply because of your lighting choices.

One often overlooked element of restaurant design is the power that the right restaurant lighting can have in shaping your restaurant's desired look and feel. It's so important that 91% of casual dining patrons say ambiance plays a role in their dining choice; more than one in five diners name ambiance as their top factor for picking a restaurant.

"It's About Contrast, Not Brightness"

Technology advances, there are more and more devices to help you run your restaurant, including tools to manage your restaurant lighting. Depending on the system you choose, you can access a variety of features. Some of these available features include automatic shut-off, daylight sensors, level control, dimming control, signage control, event scheduling, occupancy/vacancy sensors, and time-locks.



Ambient Lighting - This is the general illumination of an environment. As its name suggests, it's also responsible for a restaurant's overall mood.

Low lighting creates an intimate, upscale atmosphere, especially in a restaurant's bar and lounge areas, where patrons are more apt at to lean close together.

Task Lighting - This helps customers and employees perform tasks, like reading the menu, being able to clearly see the table setting and food, and cooking in the kitchen. In a place that's generally low-lighted, a salad bar or buffet station needs task lighting to help it stand out; this is also helpful for illuminating pathways. It also helps with seeing reflections clearly in the restrooms' mirrors.

Accent Lighting - More decorative than functional, accent lighting is used to draw attention to specific areas and objects to create visual interest. Paintings, sculptures, fountains, and bars are typically illuminated by accent lighting.



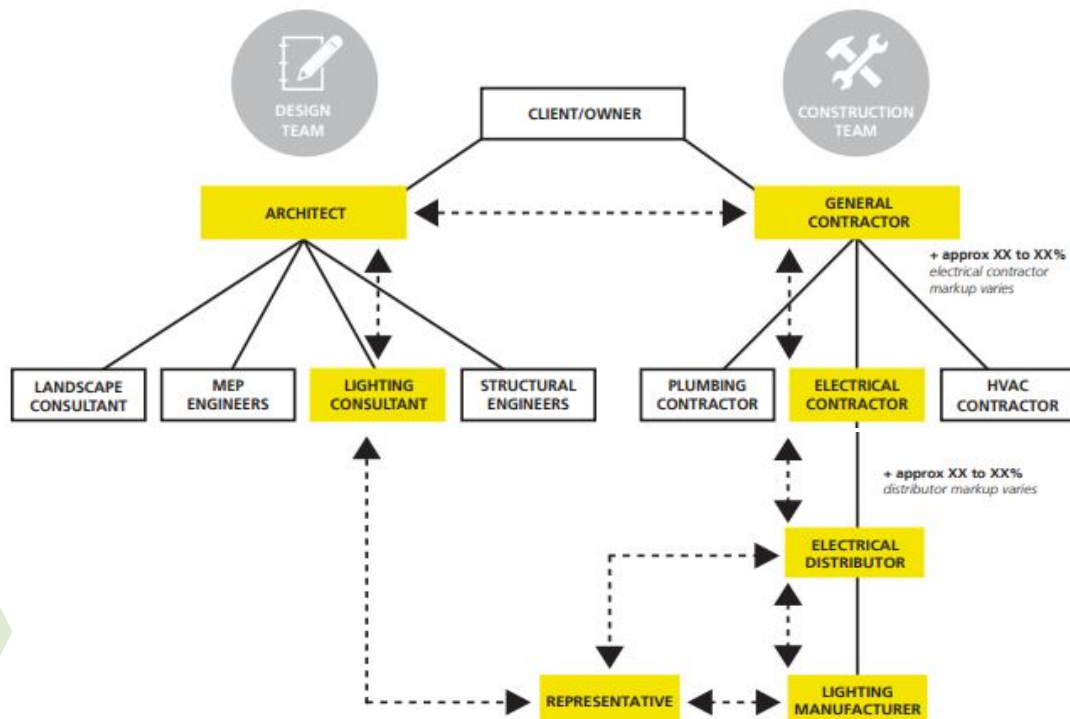
Selecting products that can be delivered within the project schedule is key to maintaining the specification on many projects. Working backwards, develop (in conjunction with the design and construction team) a schedule for delivery of products based on the schedule for project completion back to bid and award of the project.

Budget is often the overarching issue. It is important to establish a project's budget with the Client/Owner during the early phases. Work with the Client/Owner to make sure they understand the impact of budget issues on a project's design goals. Try to assure that expectations are realistic based on the budget available.

Develop a lighting budget at the commencement of the project. Ideally, the budget will be based on preliminary design drawings and ideas, and will emerge from discussion among the owner, the architect and the lighting designer. sometimes one must design to a budget; in any case, it is important to adhere to the budget once it is set.

The client may have specification standards that apply to the project. If the project brief does not include creating new standards, the specifier may be asked to use the existing standards or defend decisions to deviate.

As part of our communications we take steps to educate our clients so that they understand the need for and benefits of specified products.



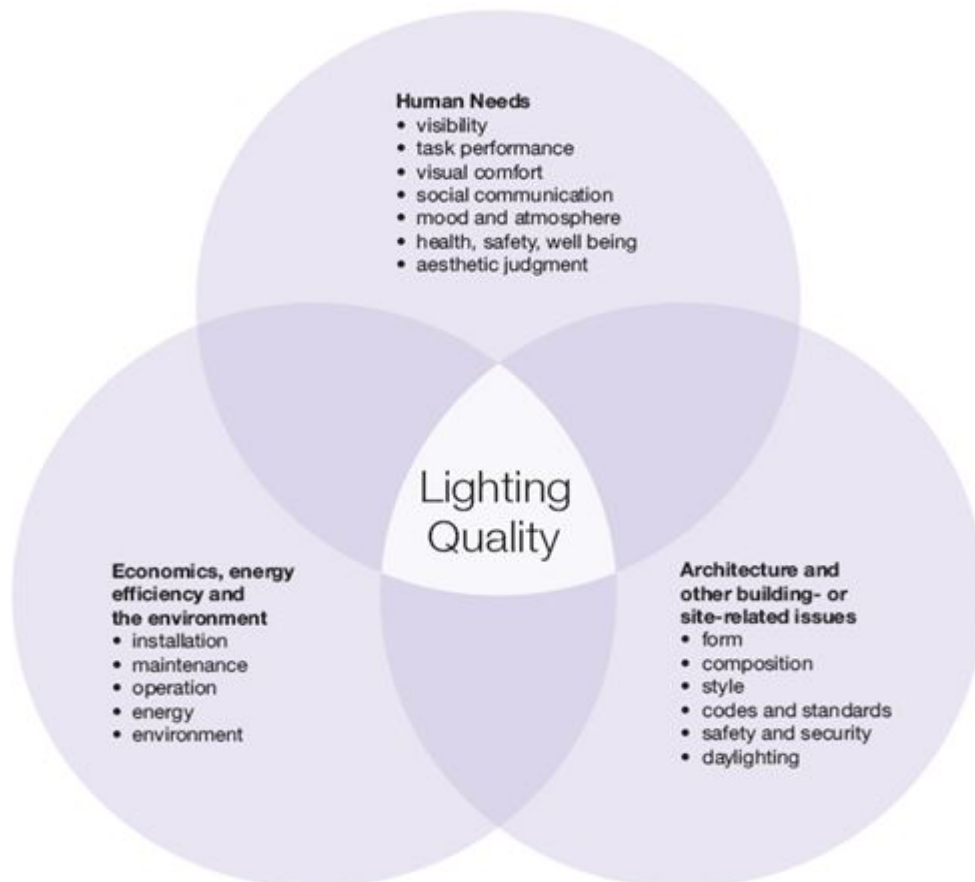
Light + Comfort

Good lighting provides sufficient light levels without glare, which can be irritating or even impair vision. Just as older people need more light to see clearly, they are also more sensitive to glare, making vision and glare critical issues for America's aging population. Energy policies should incorporate visual comfort as a requirement to promote lighting choices that do not trade off efficiency for glare.

Quality of light is essential to quality of life.

The positive effects of good lighting on quality of life are vital: human health, productivity, comfort, and function depend in large measure on appropriate lighting. Lighting consumes about 20% of the electric energy in buildings; it is imperative to address the value light brings us while also addressing energy issues. Light is a commodity we take for granted to be able to see: lighting is a tool used to create needed visual environments for people to live, work, play, learn, shop, communicate and do business in. Light is an especially essential element in that most personal of spaces—our own homes.

LIGHTING QUALITY means achieving an optimum balance among human needs, architectural considerations, and energy efficiency.



4ILLUMINATION

Lighting Design and Specifications

