

Upper San Luis Rey Valley Groundwater Basin

Groundwater Sustainability Plan

In accordance with the Sustainable Groundwater Management Act, the Pauma Valley Groundwater Sustainability Agency is developing a Groundwater Sustainability Plan for the Upper San Luis Rey Valley Groundwater Basin. The Groundwater Sustainability Plan will provide a vehicle for local water agencies, groundwater users and the local community to work together to ensure the sustainable use of groundwater resources in the Upper San Luis Rey Valley Groundwater Basin.

Sustainable Groundwater Management Act

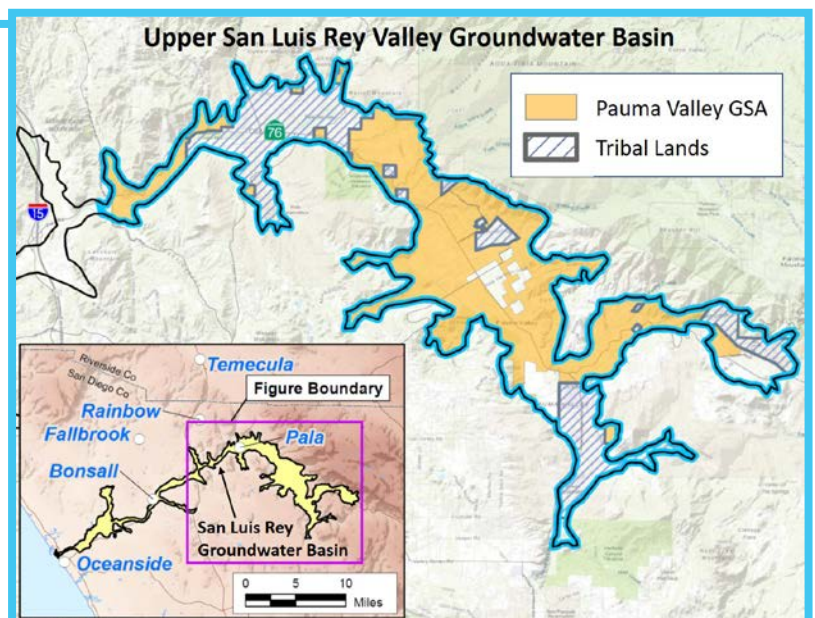
Enacted in 2014 at the height of a severe drought when groundwater was being depleted in many parts of California, the Sustainable Groundwater Management Act (SGMA) aims to ensure the reliability and quality of critical groundwater resources throughout the state. Recognizing that groundwater is most efficiently managed at the local level and each

groundwater basin is different, the intent of SGMA is to facilitate and strengthen local control and management of groundwater basins.

For groundwater basins designated as medium or high priority, SGMA requires the formation of a Groundwater Sustainability Agency (GSA), responsible for developing and implementing a Groundwater Sustainability Plan that considers the interests of all beneficial uses and users of groundwater in the basin.

Upper San Luis Rey Valley Groundwater Basin

The Upper San Luis Rey Valley Groundwater Basin is a medium-priority basin. As a result, the Pauma Valley GSA, consisting of the Yuima Municipal Water District, Pauma Valley Community Services District, and Upper San Luis Rey Resource Conservation District, is developing a Groundwater Sustainability Plan for achieving long-term groundwater sustainability in the basin.



Groundwater Sustainability Plan Contents

The GSA will consider scientific data, local knowledge of the basin and community input to develop the Groundwater Sustainability Plan for the Upper San Luis Rey Valley Groundwater Basin. The Plan will describe the basin conditions, such as the geology of the basin and groundwater levels within it. The Plan will also establish what sustainable management will look like for the basin, and the actions, if any, needed to ensure sustainability.

Key elements of a Groundwater Sustainability Plan include:

- **Plan Area and Basin Setting** – physical description of the basin including historical groundwater budgets and water quality
- **Sustainable Management Criteria** – establishment of sustainability goals including minimum thresholds, measurable objectives and interim milestones
- **Projects and Management Actions** – how to achieve the GSA agreed upon sustainability goals
- **Groundwater Sustainability Plan Implementation** – costs, schedule, reporting and evaluation of implementation


Community input is essential for an accurate, comprehensive Groundwater Sustainability Plan that reflects the needs of the community.

Visit www.yuimamwd.com/gsp to sign up to receive future notices about the Groundwater Sustainability Plan development and opportunities to provide input.

Development Schedule and Opportunities for Community Involvement

The Pauma Valley GSA is committed to open, inclusive and ongoing communication with the community throughout the development and evaluation of the Groundwater Sustainability Plan. The GSA will seek incremental community input as sections of the Plan are developed.

SGMA requires the Groundwater Sustainability Plan to be completed by January 2022.

Winter 2018/2019	Summer – Winter 2020	Spring 2021	Summer 2021	Fall 2021	Winter 2021/2022
Notice of Intent to Develop GSP	Data Collection	Plan Area & Basin Setting Stakeholder Meeting 	Sustainable Management Criteria Stakeholder Meeting 	Projects & Management Actions GSP Implementation Stakeholder Meeting 	Notice of Proposed GSP Adoption Public Review of Draft GSP Public Hearing to Adopt GSP 

Ongoing Community Outreach 