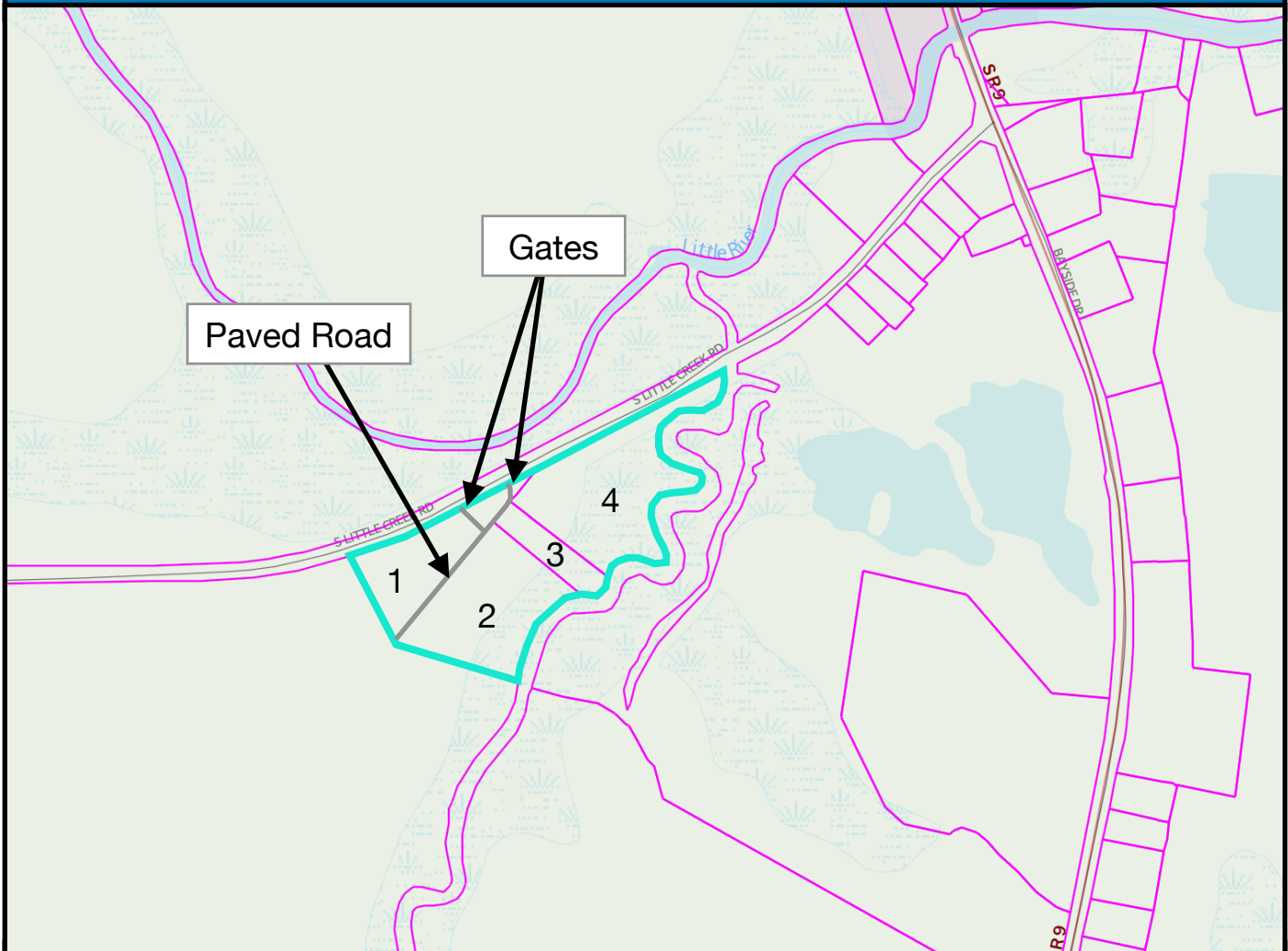


Four Building Lots 3306 S. Little Creek Rd.



\$669,000

13 Acres + - Four Building Lots 1480' road frontage with two gated entrances, boundary along the river in the back of the property, kayak or boat to the Delaware bay. Paved road runs 600' through the property. County sewer available, City of Dover electric, private well. New State public boating, fishing and crabbing piers, public boat launch, Kayak launch and free parking. Showing with out going through a traffic light. Amazing location will take mobil, doublewide, manufactured, or new construction.

Tom Antoniou 302-670-0406



144 Kings HWY. Suite 301
Dover De. 19901 888-543-4829