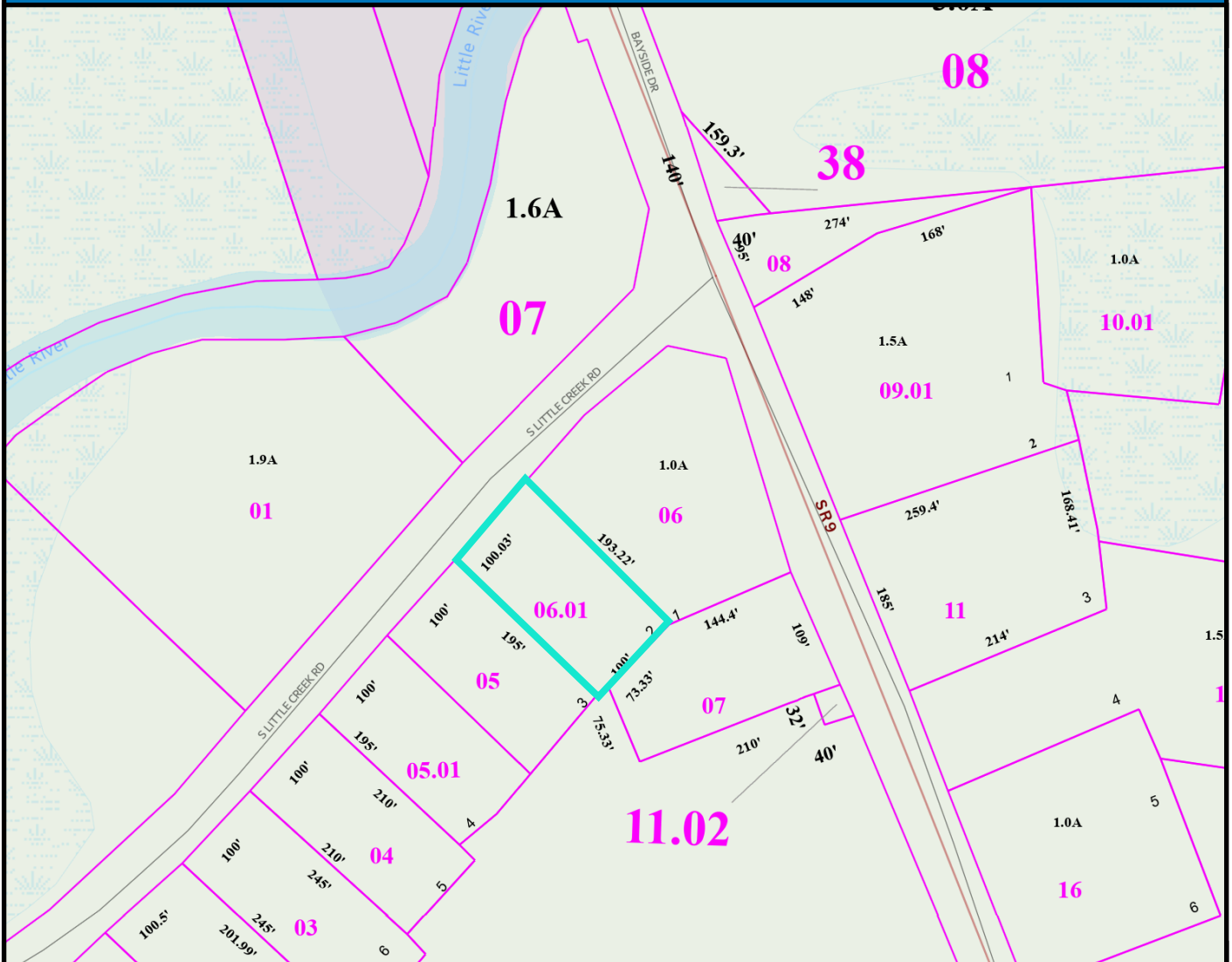


Building Lot 3700 S. Little Creek Rd DE.



\$79,000

Building Lot 100' road frontage, 195' deep, County sewer available, City of Dover electric, private well. New State public boating, fishing and crabbing piers, public boat launch, Kayak launch with free parking. Shopping with out going through a traffic light. Amazing location will take mobil, doublewide, manufactured, or new construction.

Tom Antoniou 302-670-0406



144 Kings HWY. Suite 301
Dover De. 19901 888-543-4829