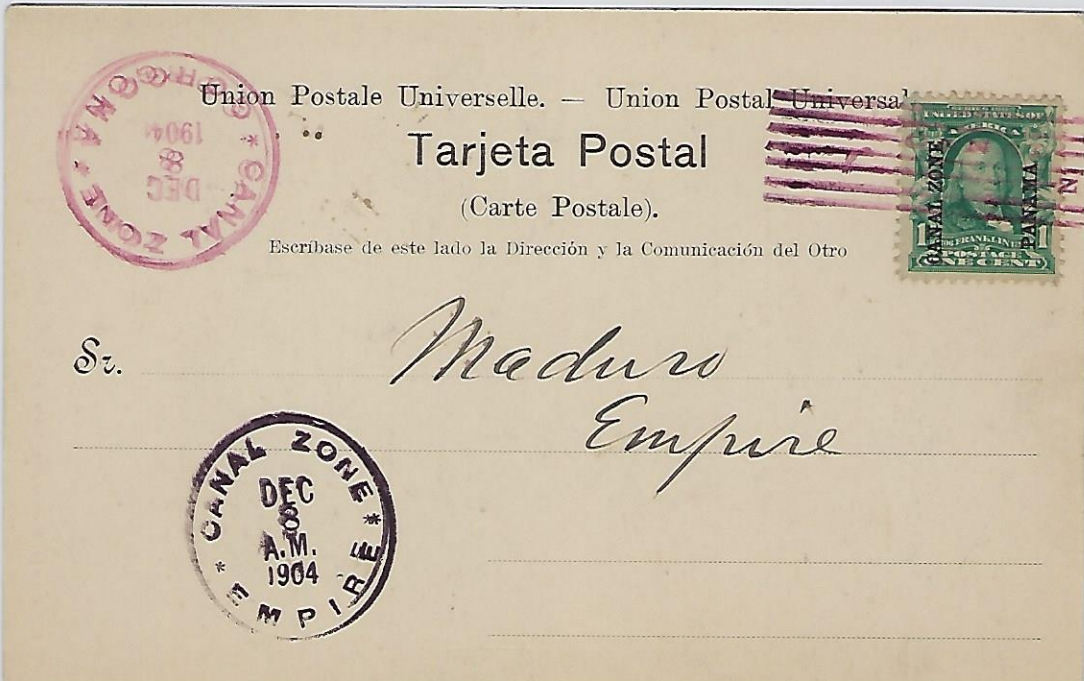


CZ
#4
\$100-



CZ
#4
\$100-

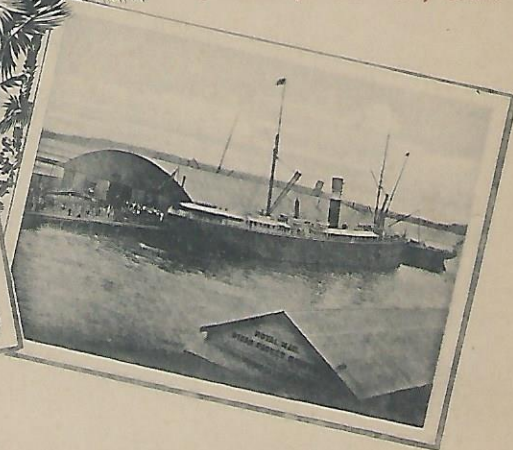
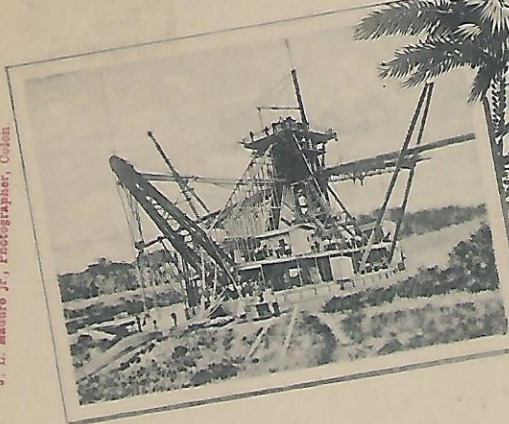


53
14
100

Dredge (City of Paris)
Panama Canal.

Panama Railroad Wharf Colon.

J. L. Maduro Jr., Photographer, Colon.

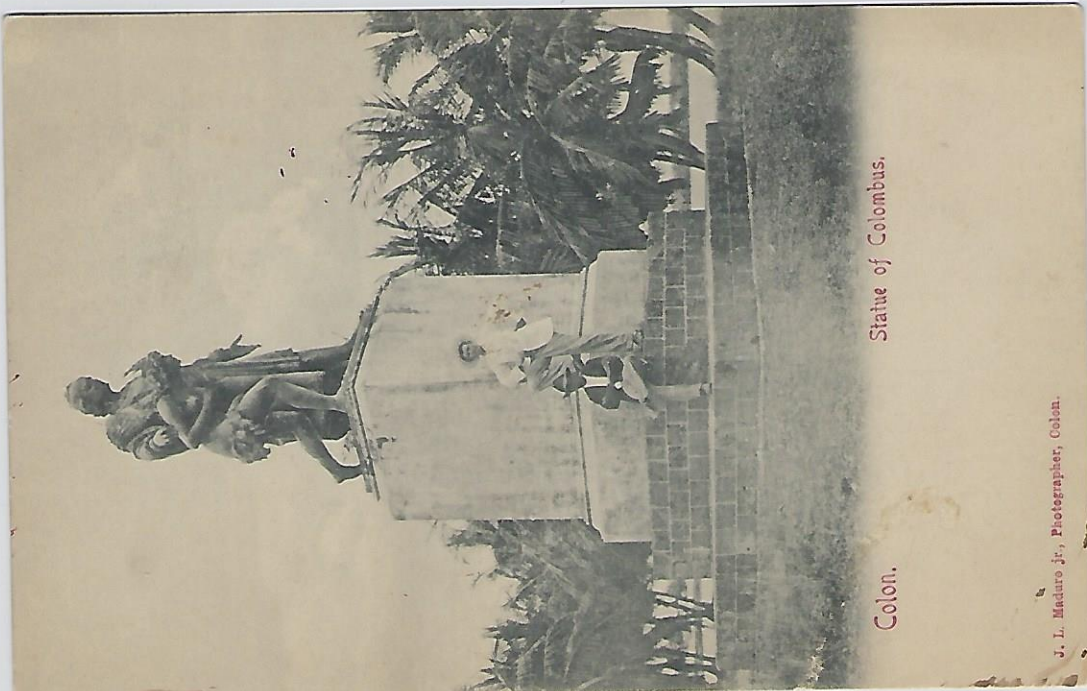


53
14
100

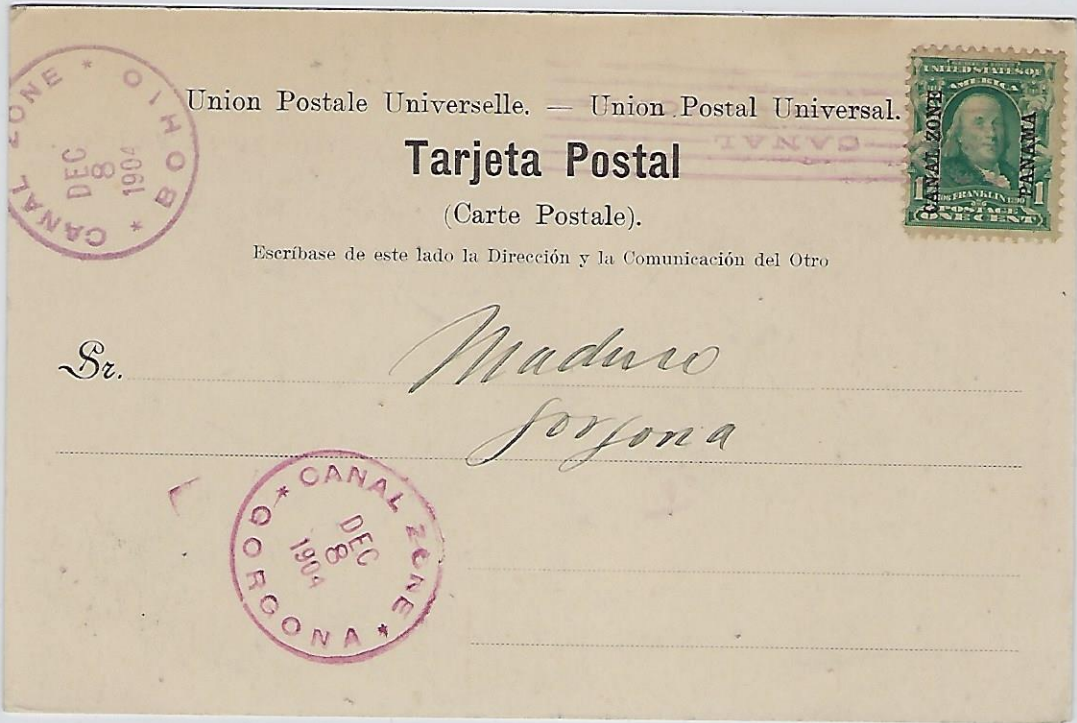
Statue of Columbus.

Colon.

J. L. Maduro Jr., Photographer, Colon.



CZ
#4
Bohio
\$150-



CZ #4
Bohio
\$150-

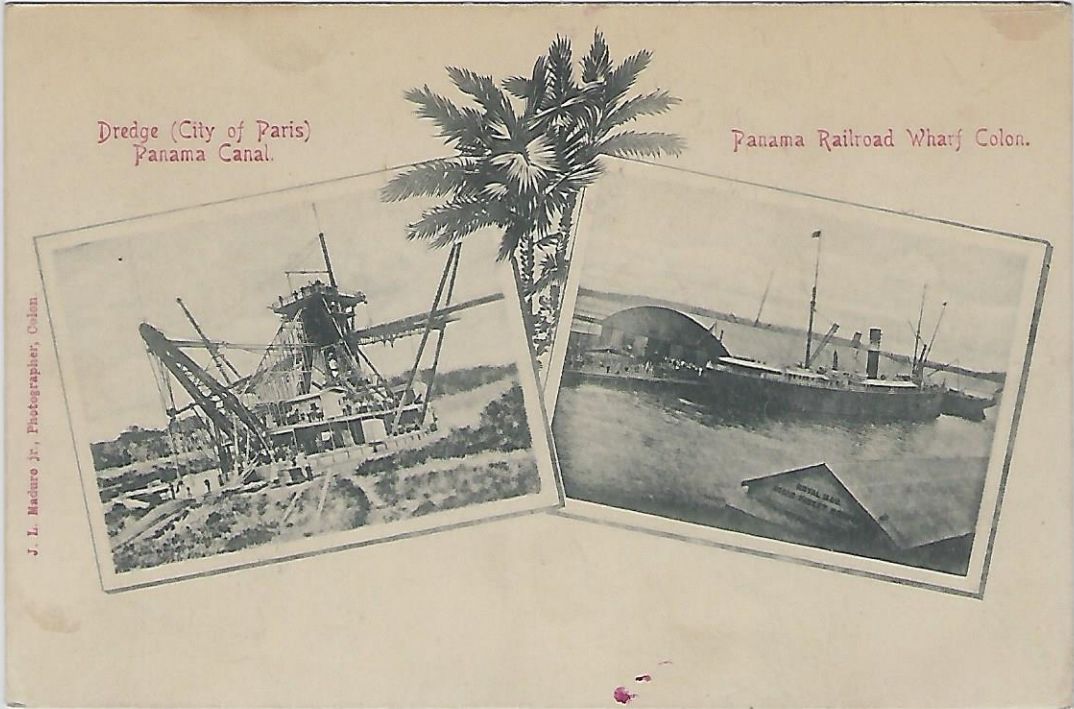


CS 44
Borio
4150

Dredge (City of Paris)
Panama Canal.

Panama Railroad Wharf Colon.

J. L. Maduro Jr., Photographer, Colon.

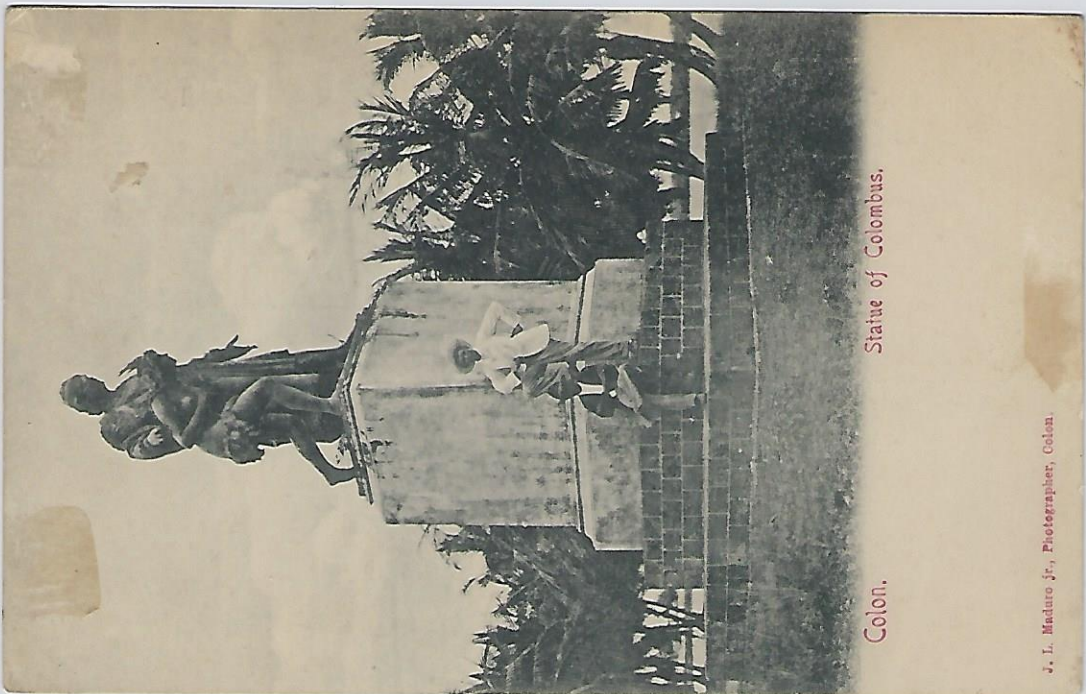


CS 44
Borio
4150

Statue of Columbus.

Colon.

J. L. Maduro Jr., Photographer, Colon.



CZ
#4
\$100-



CZ
#4
\$100





Colon.

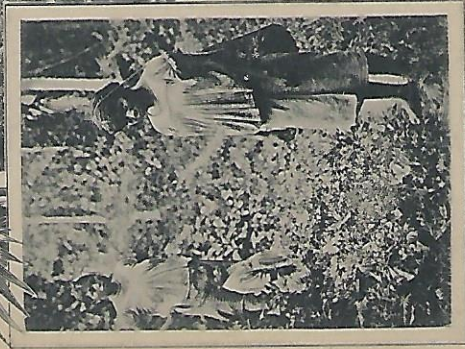
Group of Natives.

J. L. Maduro Jr., Photographer, Colon.

50
74
100#



Native Indians.



Colon.

Native Indians.

J. L. Maduro Jr., Photographer, Colon.

50
74
100#

CZ
#4
\$100-



CZ #4
\$50-



55
PA
1008



Washing day.

Colon.

J. L. Madson Jr., Photographer, Colon.

55
PA
1008



Isthmus
of Panama.
Native
washerwomen

J. L. Madson Jr., Photographer, Colon.

CZ #4
San Pablo
\$150-



CZ #4
San Pablo
\$150-



PH 55
2019 no 2
1120



Isthmus
of Panama.
Colombian
Indians.

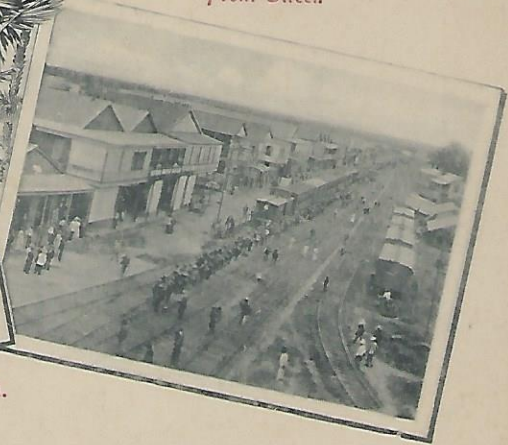
J. L. Madure Jr., Photographer, Colon.

PH 55
2019 no 2
1120

Native Soldiers in front of Quartel.

Front Street.

J. L. Madure Jr., Photographer, Colon.



Colon.

CZ
#4
\$100-



CZ
#4
San Pablo
\$150-



4100
1/1

Unico Depositario: Arturo Köhpoke, Panamá.



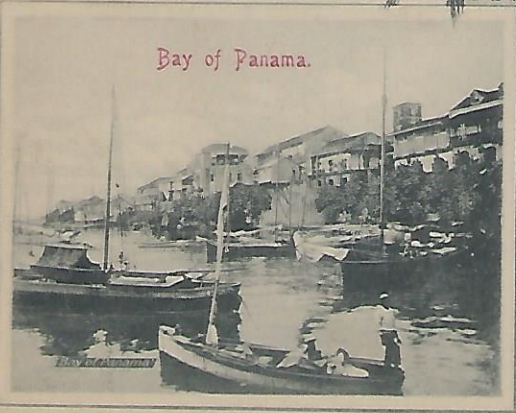
Panamá. Calle de Revellin.

Sept 26-04
E. F. S.

Peruvian High Ball on
the way. We ready for
it. 1 Day late leaving here

4150
1/1

J. L. Madaro Jr., Photographer, Colon.



Bay of Panama.



Cathedral Church, Panama.

CZ

#5

\$100-

Tarjeta Postal.



Mrs Lucy La Tourette
No 71 West 8th Street
Bayonne City
New Jersey
U.S.A.

CZ

#4

\$100-

Republica de Colombia

Tarjeta - Postal

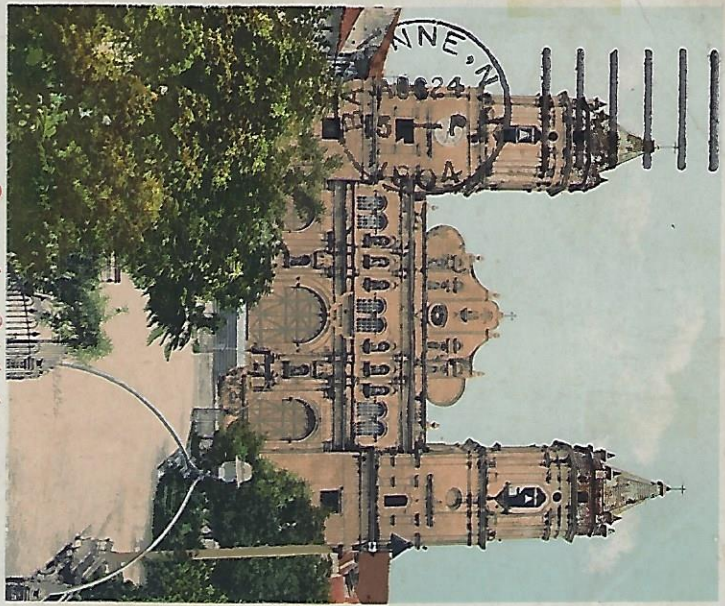


J M De Zae By
Paterson

en New Jersey

Paterson Savings inst

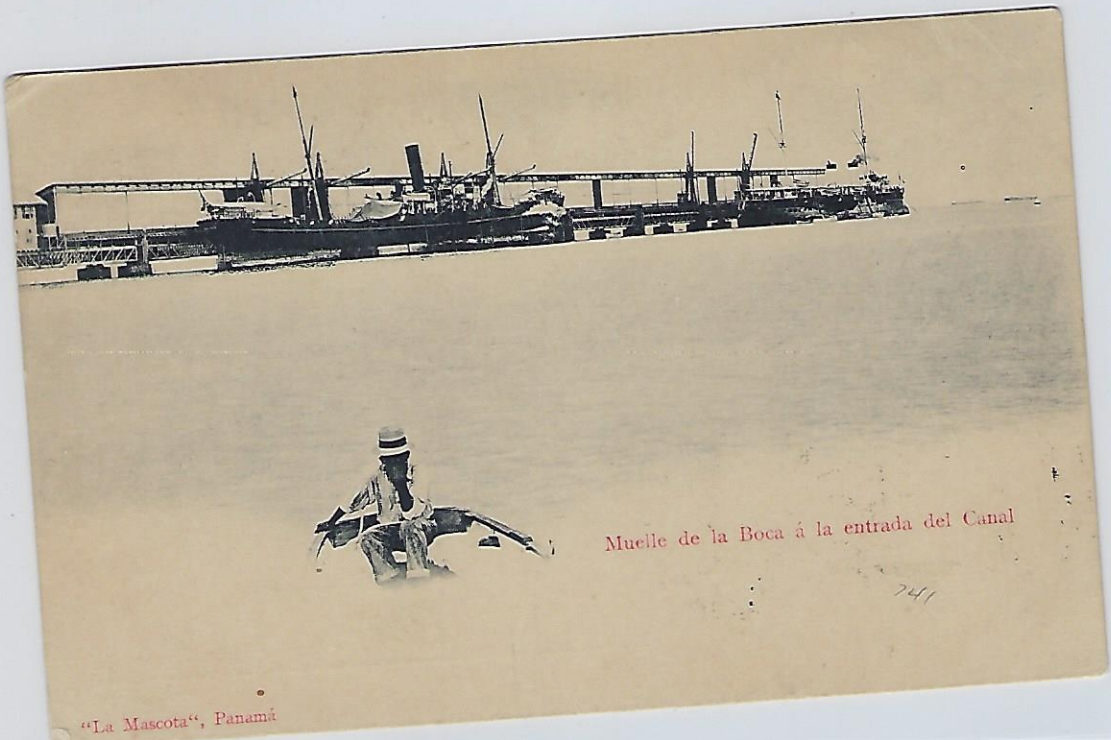
CS 24
1100



Panamá. Catedral.

CANAL ZONE
AUG 17
1904
DISTRICT

CS 24
1100



Muelle de la Boca á la entrada del Canal

"La Mascota", Panamá

741

CZ
#5
\$75-



CZ
#5
Broken A + M
\$100-



52
450

Bandera de la República de Panamá.

The flag of our little sister republic.



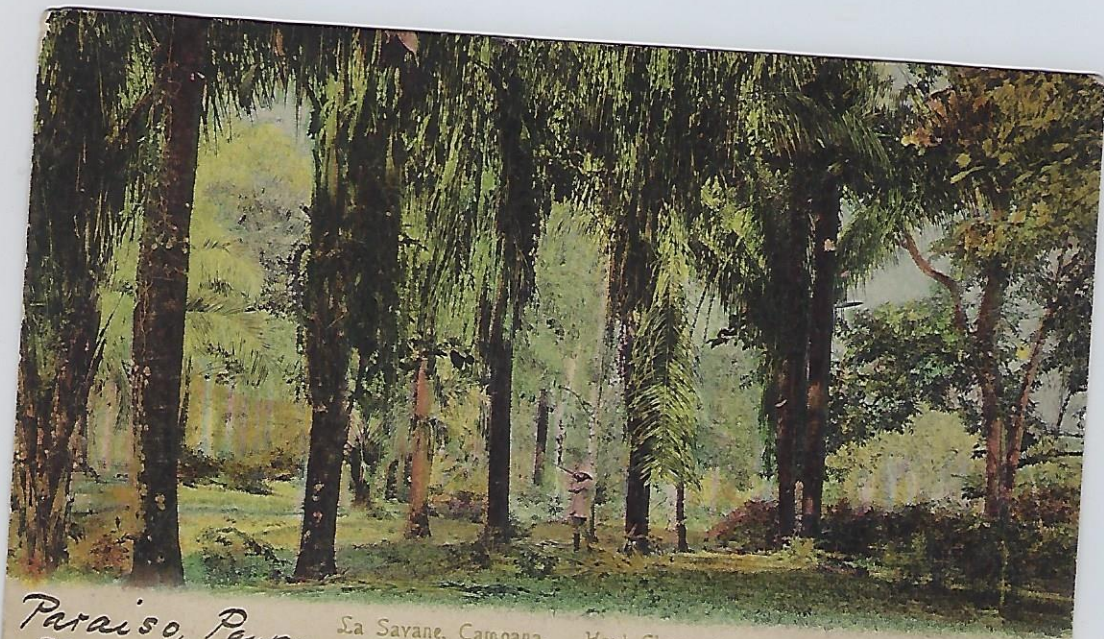
Copyright of the Editors, Maduro & Hijos, Panamá.

Long may it
Wave under
the protection
of "Old King".

Aug 20, 1904

Best wishes to you
& your associates. John Bunnett

52
450



Paraiso, Panama
Nov. 18th 1904

La Savane, Campana. "Haut Chagres"

Hello Maude -
would Charlie like to hunt here
John

CZ
#5
\$100-



CZ
#5
\$100-



50
24
1004



Washing day.

Colon

J. I. Maduro Jr., Photographer, Colon.

5#

50
24
1004



Statue of Columbus.

Colon.

J. I. Maduro Jr., Photographer, Colon.

CZ
#5
\$100-



Union Postale Universelle. — Union Postale Universelle

Tarjeta Postal

(Carte Postale).

Escribase de este lado la Dirección y la Comunicación del Otro



Sr.

J. Maduron
GORGONA



Scott 5
ON
MADURO
PHOTOGRAPHER-
COLON
NATIVE
WASHERWOMEN
ppc

EMPIRE
Hs-1b
DEC. 7, 1904
GORGONA
HE-1
DEC. 8, 1904

53
24
1007



Isthmus
of Panama.
Native
washerwomen.

J. L. Madore Jr., Photographer, Colon.

2007
on
PROVED
PHOTOGRAPHIC
COLORED
NATIVE
WASHERWOMEN
P.C.
EMPRE
K-11
DEC. 7, 1904
GARDNER
K-1
DEC. 8, 1904