

(912) 246-8497  
1-800-332-8232

**H**ARRELL<sup>®</sup> COMPANY, INC.

ALLEN

8827 BASKET RAKE

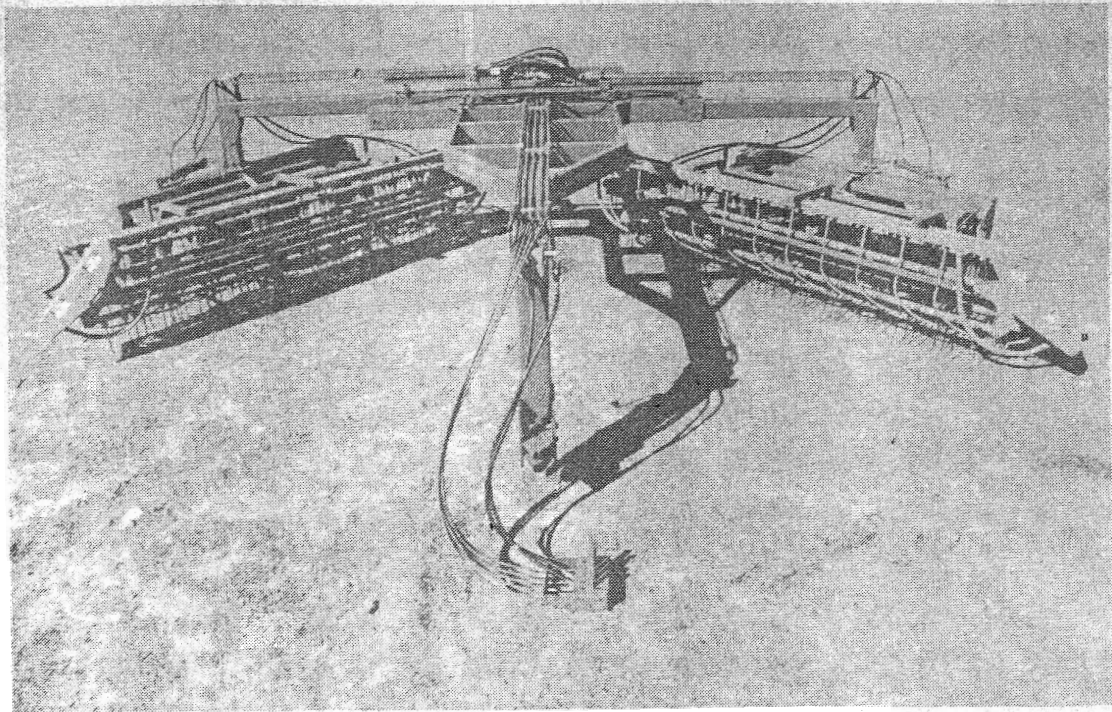
By **H**ARRELL<sup>®</sup> COMPANY, INC.

QUALITY

SINCE 1954

SERVICE

"BUILT TO LAST EQUIPMENT"



8827 BASKET RAKE

PARTS-MANUAL

JANUARY 1995

LOCATION: VADA, GA MAIL: P.O. BOX 289, PELHAM, GA 31779



---

## CONTENTS

---

MAIN FRAME . . . . .	2
EXTENSION ARMS . . . . .	4
BASKET ADAPTOR, PIVOT ARM & SWING ARM. . . . .	6
HUB & STAR ASSEMBLY . . . . .	8
BASKET FRAME, GUARDS & STRIPPER BARS . . . . .	10
BOTTOM RACK HYDRAULIC SCHEMATIC . . . . .	11
TOP RACK HYDRAULIC SCHEMATIC. . . . .	12
SPOOL & CHECK VALVE HYDRAULIC LINE ROUTING . . . . .	13
BASKET HANGER & DRIVE MOTOR HYDRAULIC LINE ROUTING (5 func)	15
FLOW CONTROL VALVE. . . . .	16
BASKET HANGER & DRIVE MOTOR HYDRAULIC LINE ROUTING (3 func)	17
CONTROL BOX . . . . .	19
MAIN CYLINDER. . . . .	21
LIFT CYLINDER. . . . .	22
SWING CYLINDER. . . . .	23
GAUGE WHEEL . . . . .	24

# MODEL 8827 TWIN MAIN FRAME

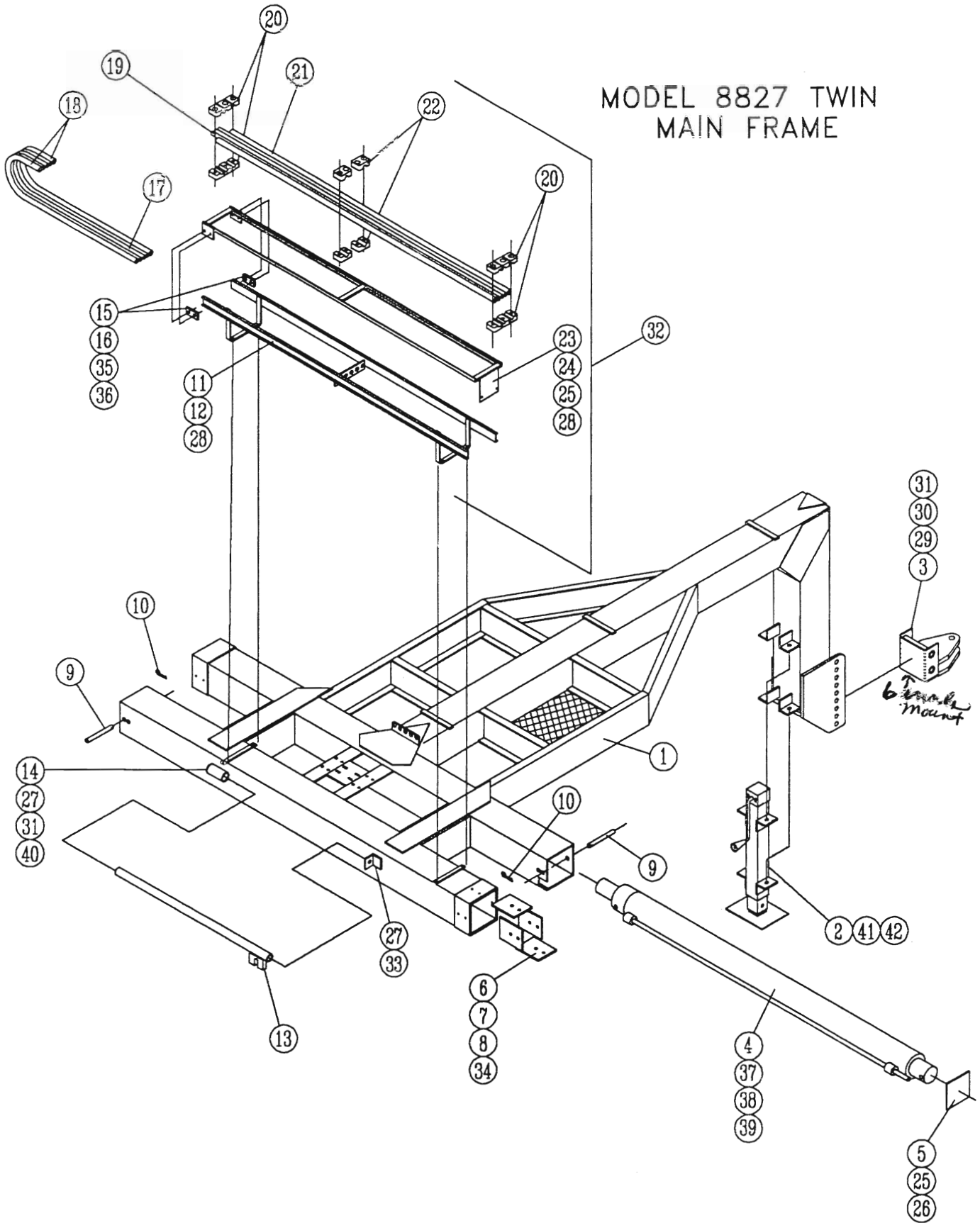


Fig. 1

## Main Frame Assembly

No. Req'd.

Ref. No.	Harrell No.	Description	No. Req'd.	
			3 Function	5 Function
1	85-082-88	Main Frame	1	1
2	85-077-88	Jack Stand	1	1
3	85-074-88	Hitch, 1995	1	1
4	79-113-88	Telescoping Cylinder	2	2
5	93-018-88	End Cap	2	2
6	79-153-88	Poly Slide Bearing	8	8
7	2814-1014	Cap Screws 5/16UNC x 1 1/2"	16	16
028	0812-1000	Hex Nut 5/16UNC	32	32
9	79-086-88	Clevis Pin 3/4" x 6 1/2"	2	2
10	79-128-88	Hair Pin Clip 79-128-88	2	2
11	85-009-88	Guide Rail Extension (HOSE RACK)	2	2
12	2814-0810	Cap Screws 1/4UNC x 1"	8	8
13	85-014-85	Hickey Bar	1	1
14	2816-1630	Hex Head Bolt 1/2UNC x 3"	1	1
15	79-001-88	Poly Slide Bearing	4	4
16	<del>3114</del> 0412-0810	Flat Head Screws 1/4UNC x 1 UNC (0412-0810)	8	8
17	79-041-88	Hose Ass'y 51" OAL - AR-17	2	6
18	79-015-88	Hose Ass'y 51" OAL - AR-7	4	4
19	84-021-88	Tubing 3/8" x 75 1/2"	2	6
20	79-016-88	Tubing Clamp 3/8"	6	18
21	84-022-88	Tubing 1/2" x 75 1/2"	4	4
22	79-012-88	Tubing Clamp 1/2"	12	12
23	85-028-88	Tubing Rack	2	2
24	2814-0804	Cap Screws 1/4UNC x 1/2"	4	4
25	1702-0800	Flat Washers 1/4"	8	8
26	2814-0806	Cap Screw 1/4UNC x 3/4UNC	4	4
27	1412-1600	Hex Lock Nut 1/2UNC	1	1
28	1412-0800	Hex Lock Nut 1/4UNC	15	15
29	2816-2480	Hex Head Bolt 3/4UNC x 8"	2	2
30	1412-2400	Hex Lock Nut 3/4UNC	2	2
31	1702-1600	Flat Washer 1/2" SAE	2	2
32	84-002-88	Rack Ass'y. (includes 11,12, 15-25,28)	2	2
33	2816-1610	Hex Head Bolt 1/2UNC x 1"	1	1
34	93-097-88	Bearing Plate Shim	8	8
35	0812-0800	Hex Nut 1/4UNC	8	8
36	1602-0800	Lock Washer 1/4" SAE	8	8
37	79-006-88	Teflon Bushing	8	8
38	79-011-88	Stud 1/2"-13UNC	8	8
39	1012-1600	Hex Jam Nut 1/2"-13UNC	8	8
40	79-032-85	Spring	1	1
41	2816-1210	Hex Bolt 3/8"UNC x 1" Gr. 5	4	4
42	1412-1200	Hex Lock Nut 3/8UNC	4	4

85-078-88

Ball Hitch  
(#206.50)

(3) optional) 1995

# MODEL 8827 TWIN EXTENSION ARM

NOT SHOWN:  
79-190-88  
HARDENED BUSHING  
GOES IN CYL LUG

94-053-88  
tools in + then  
drill hole  
Steel Bushing  
insert 4" tall 3 1/32 dia

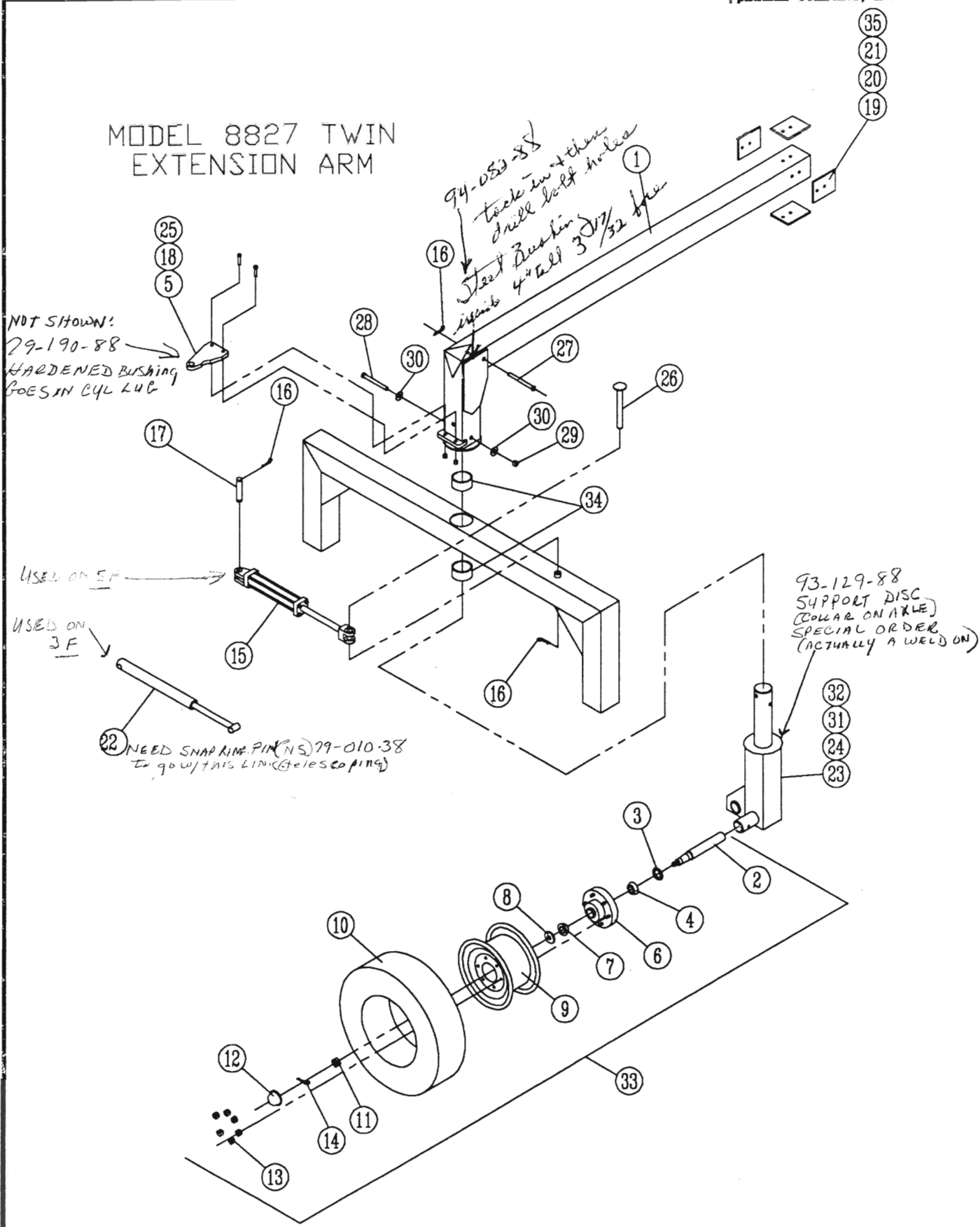
- 35
- 21
- 20
- 19

USED ON 5F

USED ON 3F

22 NEED SNAP RING PIN (NS) 79-010-38  
to go w/this LINK (telescoping)

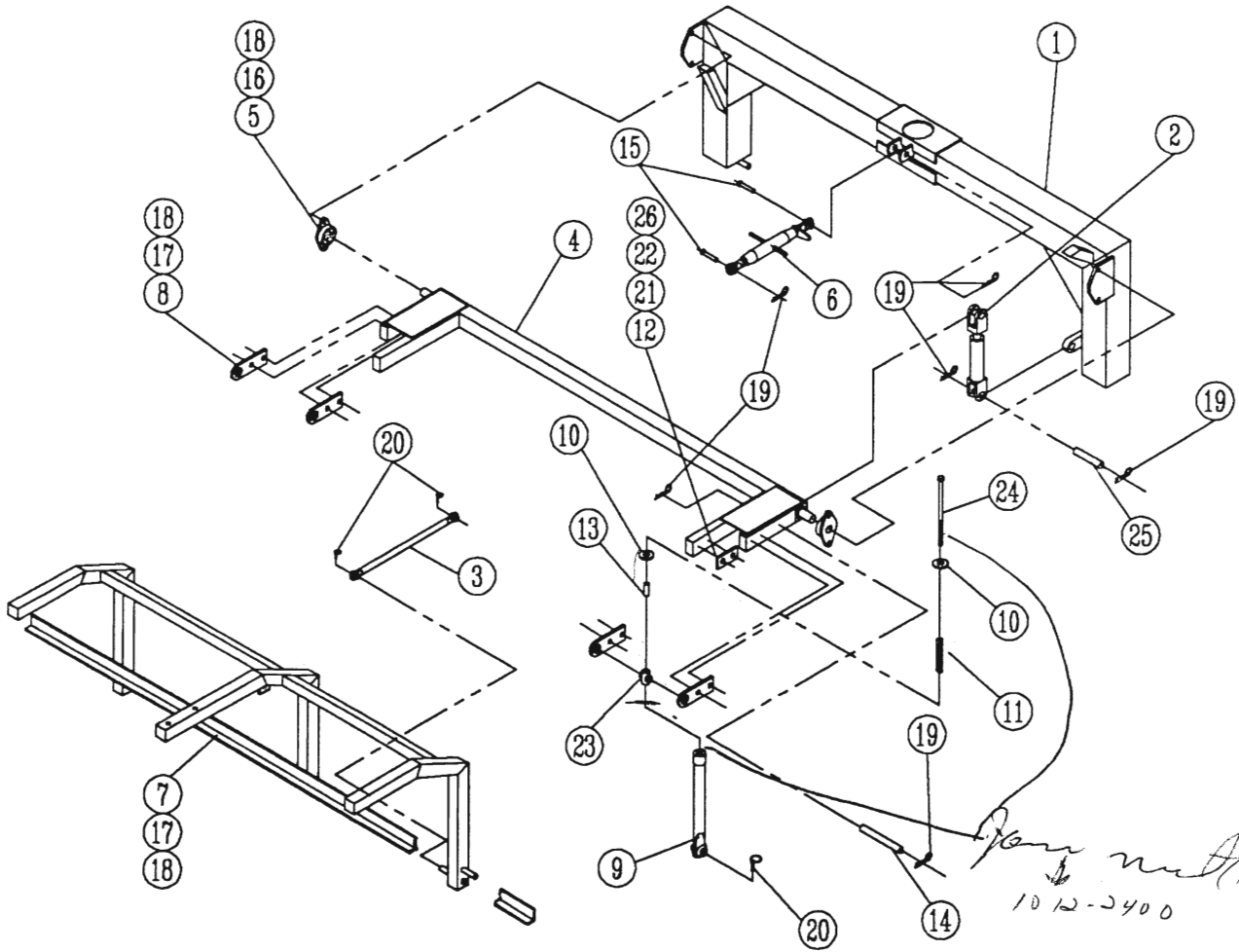
93-129-88  
SUPPORT DISC  
(COLLAR ON AXLE)  
SPECIAL ORDER  
(ACTUALLY A WELD ON)



# Extension Arm Assembly

Ref. No.	Harrell No.	Description	No. Req'd.	
			3 Function	5 Function
1	85-015-88	Extension Arm	2	2
2	77-003-02	Spindle Shaft <i>96-034-88</i>	4	4
3	77-006-02	Seal	4	4
4	77-007-02	Inner Bearing	4	4
5	<del>77-009-02</del> 2816-1620	<i>INNER RACE (NOT SHOWN)</i> Hex Head Bolt 1/2UNC x 2"	4	4
6	77-001-02	Hub With Cups	4	4
7	77-008-02	Outer Bearing	4	4
8	<del>77-005-02</del> 77-005-02	<i>OUTER RACE (NOT SHOWN) SAME RACE MFG # ASD7-021-88</i> Spindle Washer	4	4
9	79-017-88	6 Hole Wheel	4	4
10	79-018-88	Tire (7.50 x 15 Smooth)	4	4
11	77-004-02	Spindle Nut	4	4
12	77-012-02	Hub Cap	4	4
13	77-013-02	Lug Bolts - 1/2-20UNF	24	24
14	77-011-02	Cotter Pin <i>(OR 77-049-88 PIN (96) WILL FIT) 011-15 STUD</i>	4	4
15	79-158-88	Swing Cylinder		2
16	79-128-06	Hair Pin Clip	8	8
17	77-003-85	Clevis Pin		2
18	93-102-88	Swing Cylinder Lug <i>(93-107-88 (modified lug#))</i>	2	2
19	79-153-88	Poly Slide Bearing	8	8
20	2814-1006	Cap Screws 5/16UNC x 3/4"	16	16
21	0812-1000	Hex Nut 5/16UNC	16	16
22	84-062-88	Telescoping Link	2	
23	85-007-88	Right Hand Lower Axle	1	1
24	85-006-88	Left Hand Lower Axle	1	1
25	1412-1600	Hex Lock Nut 1/2UNC	4	4
26	85-071-88	Swing Arm Pin	2	2
27	79-087-88	Pin, 3/4" x 6"	2	2
28	2816-2060	Hex Head Bolt 5/8UNC x 6"	4	4
29	1412-2000	Hex Lock Nut 5/8UNC	4	4
30	1702-2000	Flat Washer 5/8"	8	8
31	2816-1234	Hex Head Bolt 3/8UNC x 3 1/2"	4	4
32	1412-1200	Hex Lock Nut 3/8UNC	4	4
33	79-001-02	Hub Ass'y. (includes #2-#14 except 9 & 10) with spindle	4	4
34	94-013-88	Bronze Bushing	4	4
35	93-097-88	Shim	8	8
N.S	79-010-38	<i>SNAP RING PIN 3/8 X 3" (NEEDED TO ADJ. DIFFERENT LENGTHS)</i>	2	

MODEL 8827  
BASKET ADAPTOR,  
PIVOT ARM AND  
SWING ARM



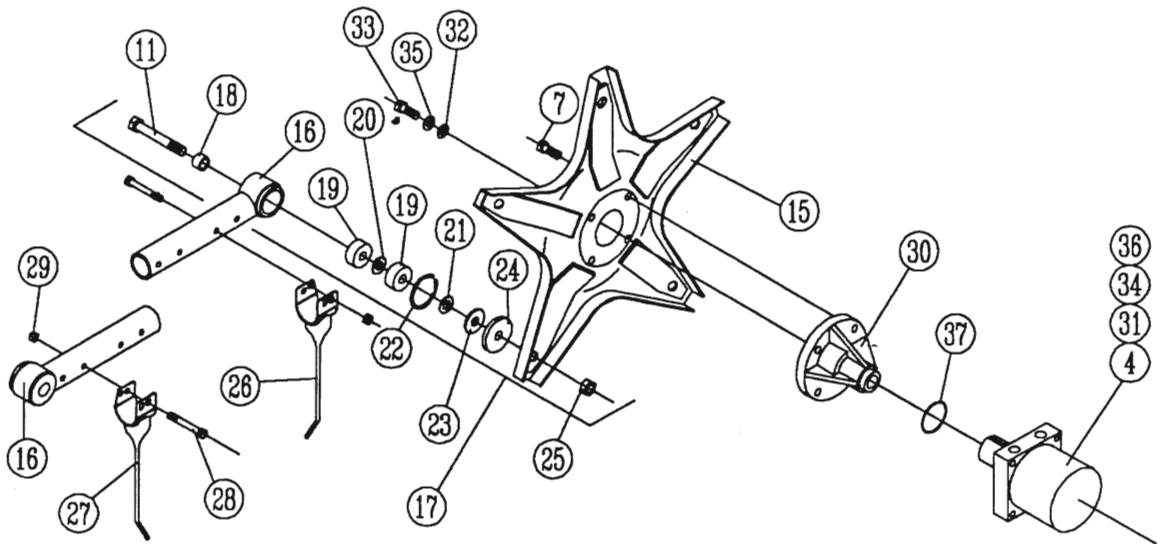
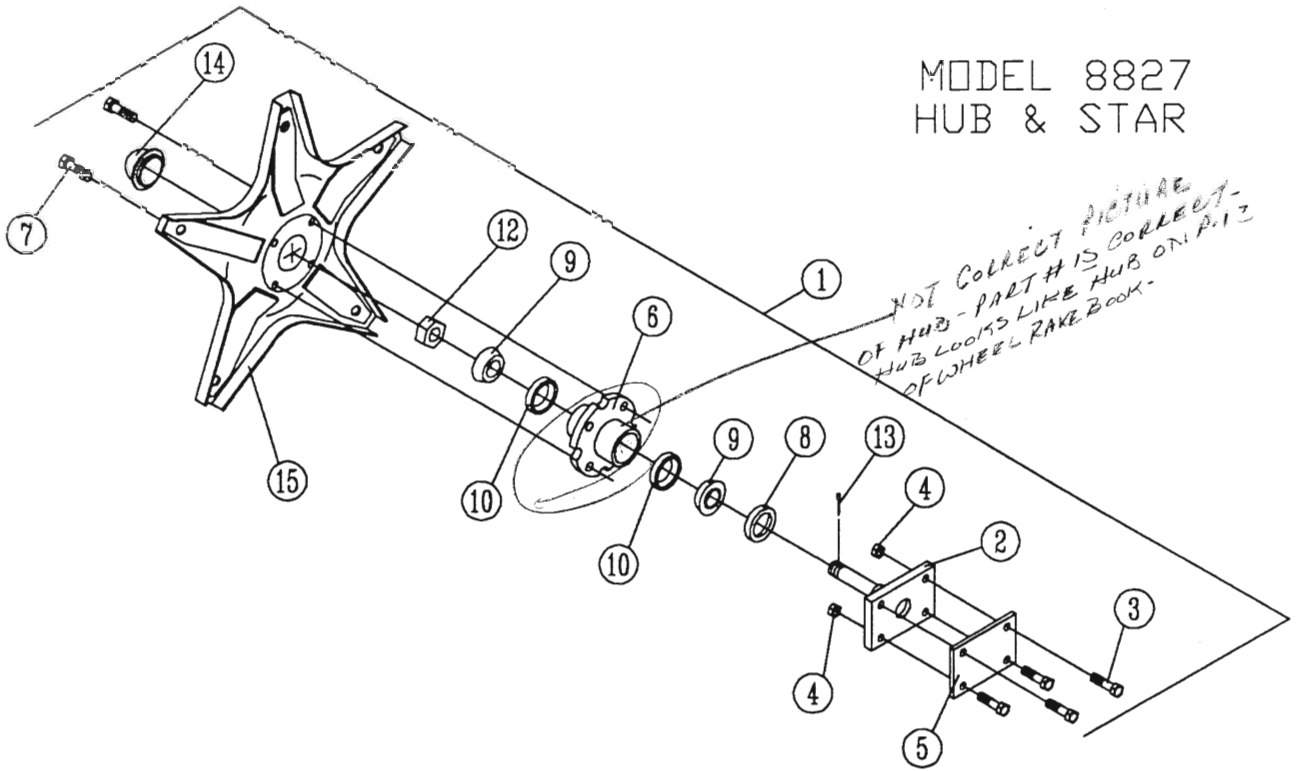


# Basket Adapter, Hanger & Lift Assembly

No. Req'd.

Ref. No.	Harrell No.	Description	3 Function	5 Function
1	85-085-88	Swing Arm, Symmetric	2	2
2	79-204-28	Leveling Cylinder	2	2
3	85-055-88	Basket Standoff	4	4
4	85-067-88	Basket Pivot Arm	2	2
5	79-025-88	Two Bolt Flange Bearing	4	4
6	79-022-88	Angle Adjusting Arm	2	2
7	85-073-88	Basket Adaptor	2	2
8	98-074-88	Guide Mount, 1995	8	8
9	85-030-88	Ground Pressure Adjusting Arm	4	4
10	79-126-88	Flat Washer, 3/4" Narrow	4	4
11	79-028-88	Flotation Spring	4	4
12	79-002-88	Poly Slide Bearing	4	4
13	77-066-88	UHMW Bushing	4	4
14	96-040-88	Lift Cylinder Pin, 1995	2	2
15	79-081-88	Clevis Pin, 3/4" x 3"	4	4
16	2816-1620	Cap Screw, 1/2UNC x 2"	8	8
17	2816-1630	Cap Screw, 1/2UNC x 3"	16	16
18	1412-1600	Hex Lock Nut, 1/2UNC	24	24
19	77-015-04	Cotter Pin	12	12
20	79-045-06	Lynch Pin	12	12
21	0315-1420	Plow Bolt, 7/16UNC x 2"	8	8
22	0812-1400	Hex Lock Nut, 7/16UNC	8	8
23	77-065-88	Adjusting Rod Guide	4	4
24	79-142-88	Special Bolt 2816-24170	4	4
25	79-142-88	Clevis Pin	2	2
25	1602-1400	Lock Washer 7/16"	8	8
NS →	1012-2400	JAM NUT 3/4" UNC (FOR 79-142-88 SPECIAL BLT)	4	4

# MODEL 8827 HUB & STAR



# Hub & Star Assembly

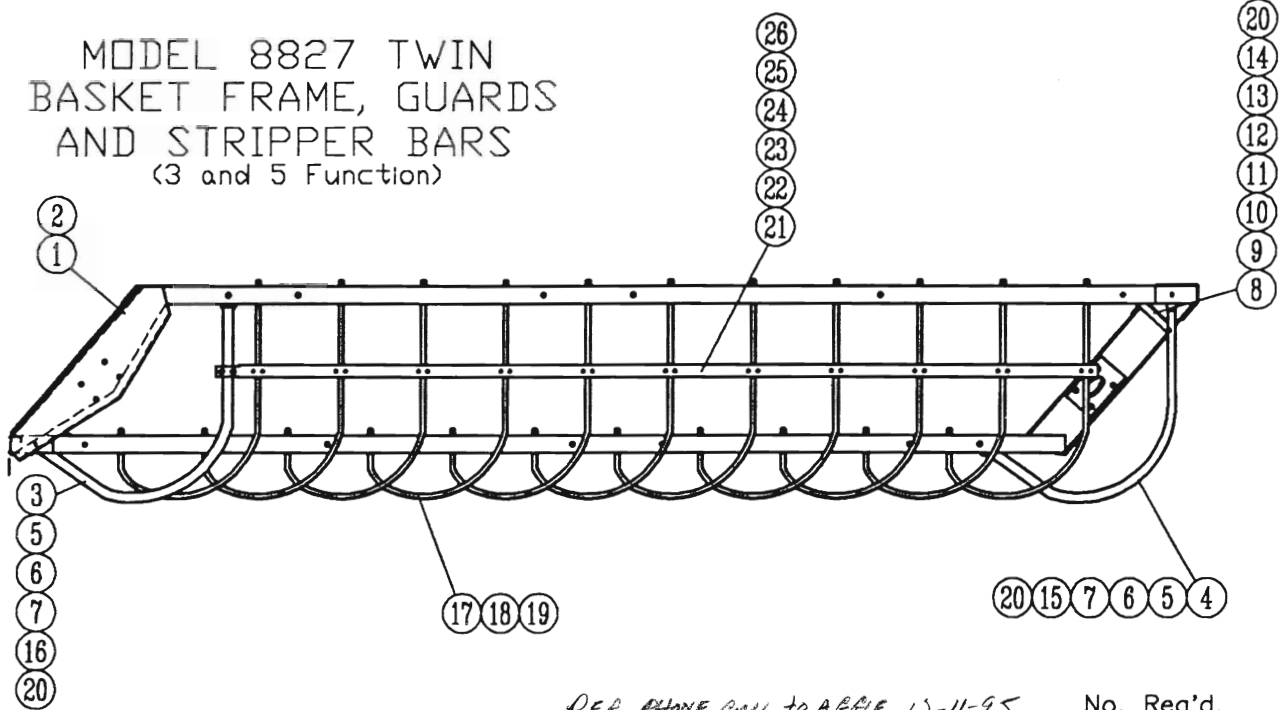
79-004-87 HUB ASSY, LESS SPINDLE

No. Req'd.

Ref. No.	Harrell No.	Description	3 Function	5 Function
1	84-061-88	Hub Ass'y. (inc. items 2-14)	2	2
2	85-075-88	Hub Spindle	2	2
3	2816-1620	Cap Screws 1/2UNC x 2"	8	8
4	1412-1600	Hex Lock Nut 1/2UNC	16	16
5	98-035-88	Hub Backing Plate	2	2
6	77- <del>008</del> -87	Hub 77-012-87 (IS ONE & SAME AS 008-) IS USED ON WHEEL RAKE ALSO	2	2
7	77-009-36	Hub Bolt	16	16
8	77-006-87	Seal	2	2
9	77-045-88	Bearing	4	4
10	77-005-87	Race (pressed in hub)	4	4
11	2836-2434	Hex Head Bolt 3/4UNF x 3 1/2"	20	20
12	77-001-87	Spindle Nut	2	2
13	77-002-87	Cotter Pin 1/8" x 2"	2	2
14	77-007-87	Dust Cap	2	2
15	85-031-88	Star	4	4
16	85-032-88	Tine Bar (Without bearings)	10	10
	84-010-88	Tine Bar (With bearings)	10	10
17	84-005-88	Bearing & Bolt Ass'y. (items 14,21-28)	20	20
18	94-021-88	Bushing	20	20
19	77-052-88	Sealed Roller Bearing	40	40
20	77-054-88	Shim	20	20
21	77-064-88	Spacer	20	20
22	77-055-88	Snap Ring	20	20
23	77-067-88	Heavy Washer	20	20
24	77-056-88	Shield	20	20
25	1432-2400	3/4UNF Stover Lock Nut	20	20
26	79-026-88	Tine, R.H. (import)	220	220
	79-109-88	Tine, R.H. (domestic)	220	220
27	79-030-88	Tine, L.H. (import)	220	220
	79-110-88	Tine, L.H. (domestic)	220	220
28	2816-1224	Hex Head Bolt, 3/8UNC x 2 1/2" Gr. 5	220	220
29	1412-1200	Hex Lock Nut, 3/8UNC	220	220
30	<del>79-164-88</del>	Splined Drive Hub 85-134-88	2	2
31	79-162-88	Standard Drive Motor	2	2
32	1702-2000	Flat Washer, 5/8" SAE	2	2
33	2836-2012	Cap Screw, 5/8UNF x 1 1/4" Bolt	2	2
34	2816-1624	Hex Head Bolt, 1/2UNC x 2 1/2" Gr. 5	8	8
35	1602-2000	Lock Washer, 5/8" SAE	2	2
36	79-163-88	Heavy Duty Drive Motor	2	2
37	77- <del>140</del> -88	Snap Ring S/E 77-034-88 WIRE RING	2	2
N.S.	72-007-88	White Motor Seal Kit	1	1
N.S.	77-132-88	Splined Drive Shaft	1	1
N.S.	79-038-88	White Motor Thrust Bearing	1	1

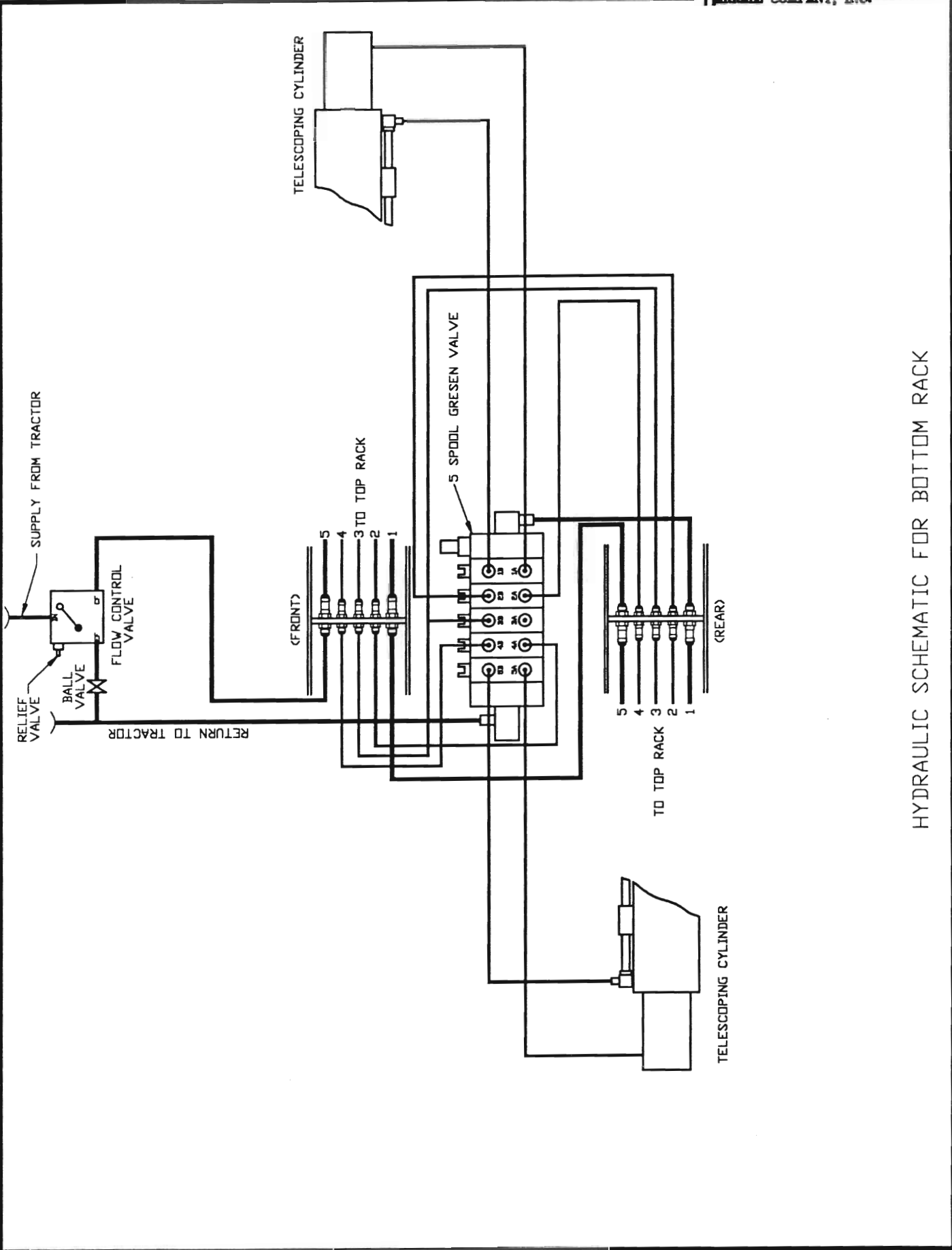
90-072-88 Tine bar head (9) \$ 17.97

MODEL 8827 TWIN  
BASKET FRAME, GUARDS  
AND STRIPPER BARS  
(3 and 5 Function)

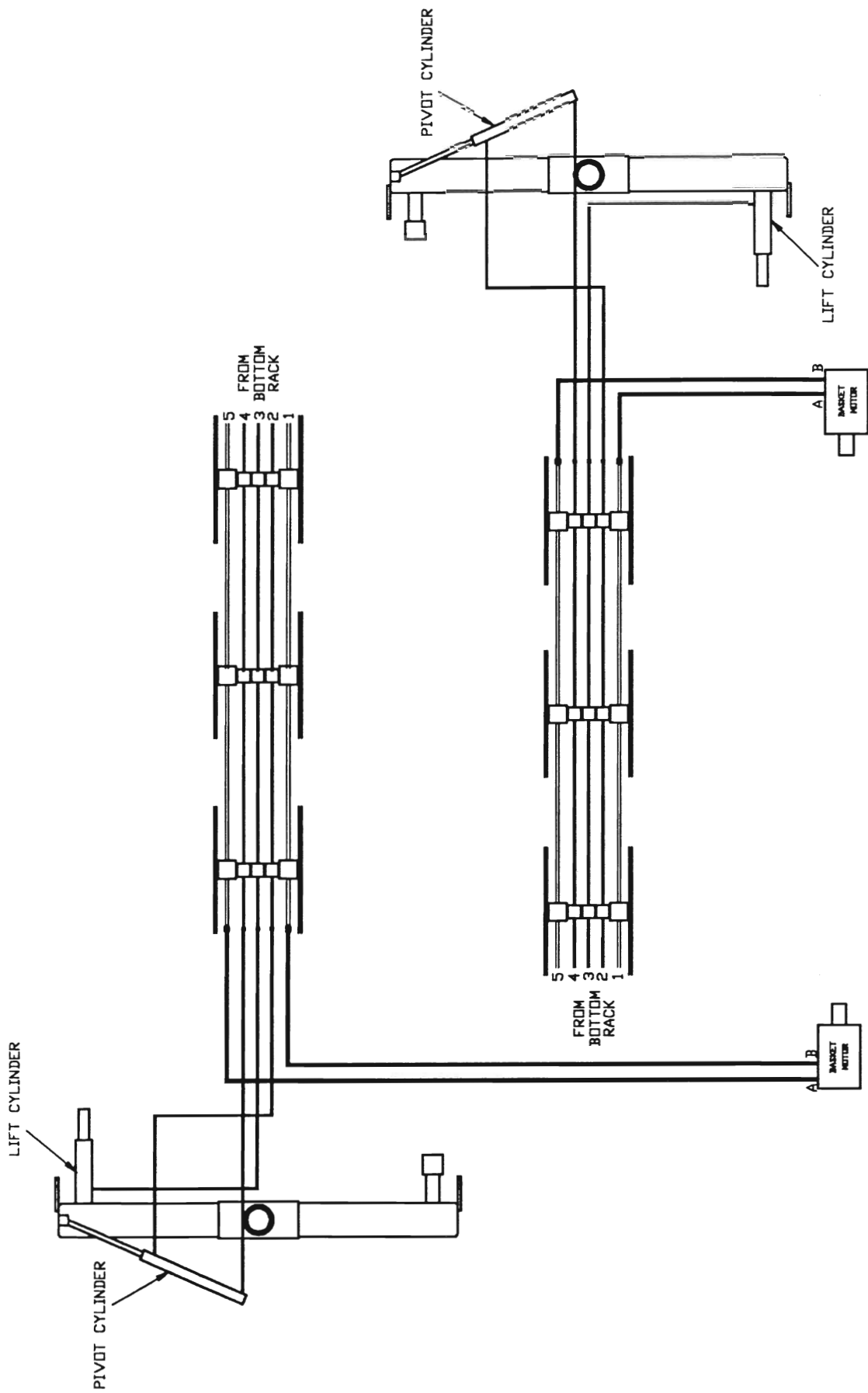


SEE PHONE CALL TO ABBIE 12-11-95 No. Req'd.

Ref. No.	Harrell No.	Description	3 Function	5 Function
1	85-034-88	Left Hand Basket Frame <i>PHYSICAL RH BASKET FRAME</i>	1	1
2	85-035-88	Right Hand Basket Frame <i>PHYSICAL LH BASKET FRAME</i>	1	1
3	92-005-88	Left Hand Front Guard	1	1
4	92-008-88	Right Hand Rear Guard	1	1
5	2814-1616	Cap Screw 1/2UNC x 1 3/4"	8	8
6	1702-1600	Flat Washer 1/2" SAE	8	8
7	1412-1600	Hex Lock Nut 1/2UNC	8	8
8	98-067-88	Left Hand Guard Brace	1	1
9	98-066-88	Right Hand Guard Brace	1	1
10	0514-1220	Carriage Bolt 3/8UNC x 2"	2	2
11	2814-1214	Cap Screw 3/8UNC x 1 1/2"	2	2
12	1702-1200	Flat Washer 3/8" SAE	4	4
13	1412-1200	Hex Lock Nut 3/8UNC	4	4
14	93-081-88	Flat Spacer	4	4
15	92-009-88	Left Hand Rear Guard	1	1
16	92-006-88	Right Hand Front Guard	1	1
17	96-023-88	Left Hand Stripper Bar	11	11
18	96-021-88	Right Hand Stripper Bar	11	11
19	1412-2000	Hex Lock Nut 5/8UNC	44	44
20	94-021-88	Spacer Bushing	5	5
21	72-004-88	Stripper Bar Support Group (Includes Items 22-25)	2	2
22	93-035-88	Stripper Reinforcing Bar	2	2
23	79-076-88	"U" Bolt (large)	2	2
24	79-077-88	"U" Bolt (small)	22	22
25	1412-1000	Lock Nuts 5/16" NC	4	4
26	1412-0800	Hex Lock Nut 1/4UNC	44	44
27				



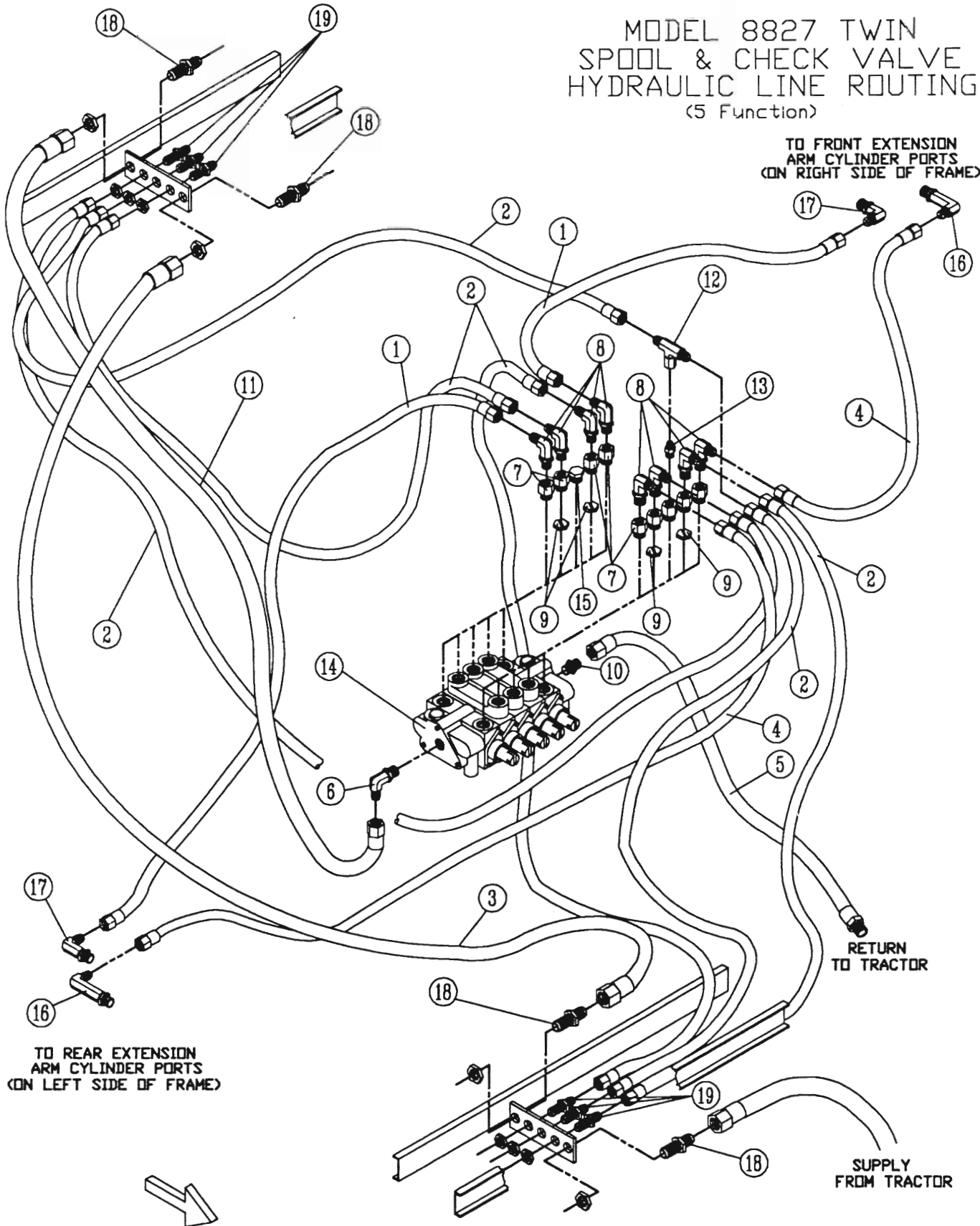
HYDRAULIC SCHEMATIC FOR BOTTOM RACK



HYDRAULIC SCHEMATIC FOR TOP RACK

# MODEL 8827 TWIN SPOOL & CHECK VALVE HYDRAULIC LINE ROUTING (5 Function)

TO FRONT EXTENSION  
ARM CYLINDER PORTS  
(ON RIGHT SIDE OF FRAME)



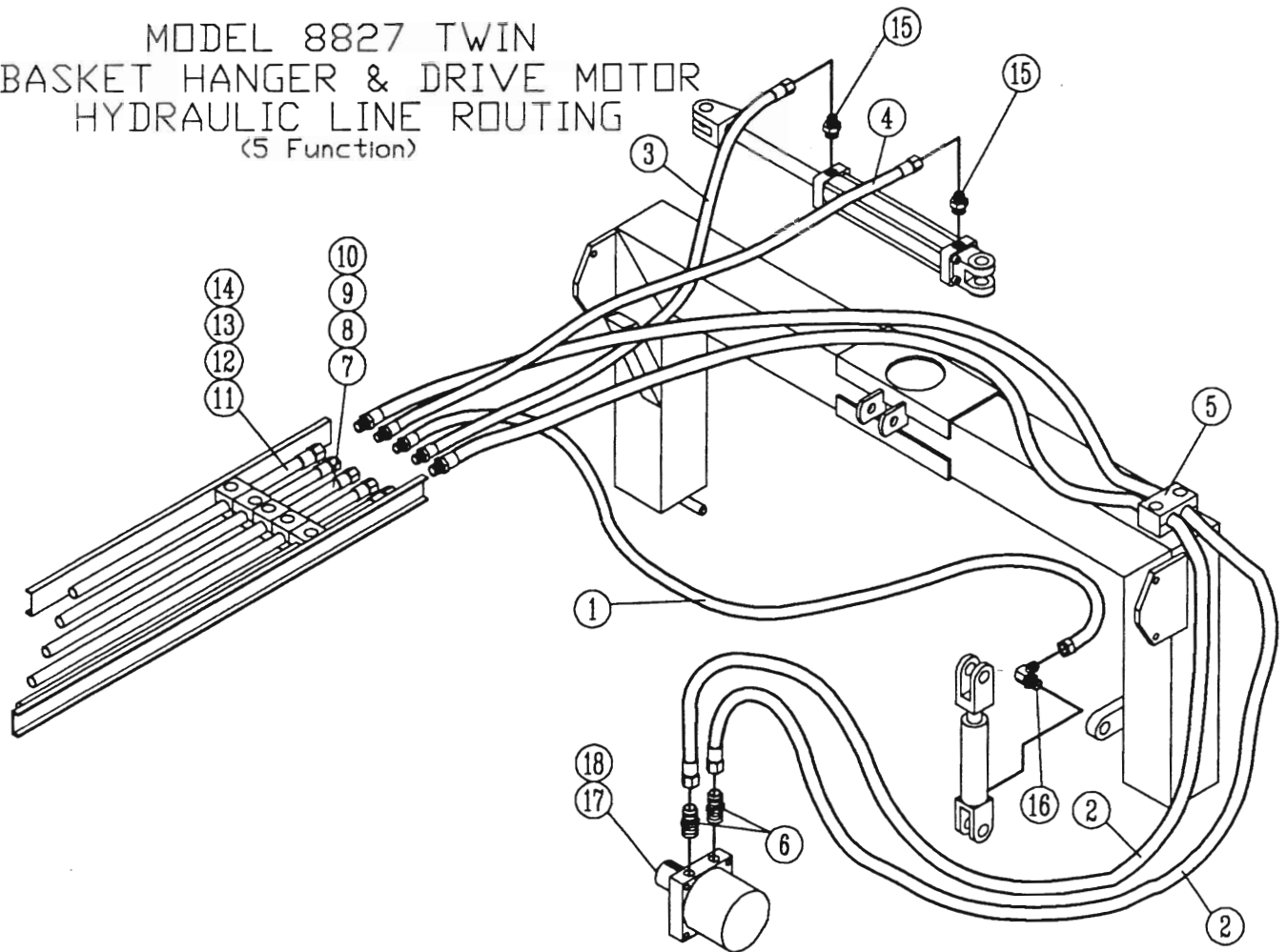
# Spool & Check Valve Hydraulic Line Routing

(5 Function)

Ref. No.	Harrell No.	Description	No. Req'd.
1	79-144-88	Hose Ass'y. 1/4" x 56" - AR 19	2
2	79-101-88	Hose Ass'y. 1/4" x 27" - <del>AR 12</del> AR 13	6
3	79-055-88	Hose Ass'y. 1/2" x 42" - AR 4	1
4	79-145-88	Hose Ass'y. 1/4" x 58" - AR 20	2
5	79-102-88	Hose Ass'y. 1/2" x 30" - AR 8	1
6	79-094-88	Straight Thread 90° Elbow	1
7	79-054-88	Straight Thread Reducer	9
8	79-052-88	Straight Thread 90° Elbow	8
9	77-058-88	Restrictor (.032)	4
10	79-050-88	□-Ring Boss Adapter	1
11	79-046-88	Hose Ass'y. 1/2 x 62 - AR-5	1
12	79-099-88	JIC Swivel Branch Tee	1
13	<del>79-124-88</del>	Straight Thread Connector 79-121-88	1
14	79-103-88	Gresen 5 Spool Valve	1
15	79-029-85	Plug	1
16	79-009-88	Elbow 90° Pipe To JIC (X-Long)	2
17	77-041-06	Elbow 90° Pipe To JIC	2
18	79-083-88	#8 Bulkhead Fitting	4
19	79-013-88	#4 Bulkhead Fitting	6

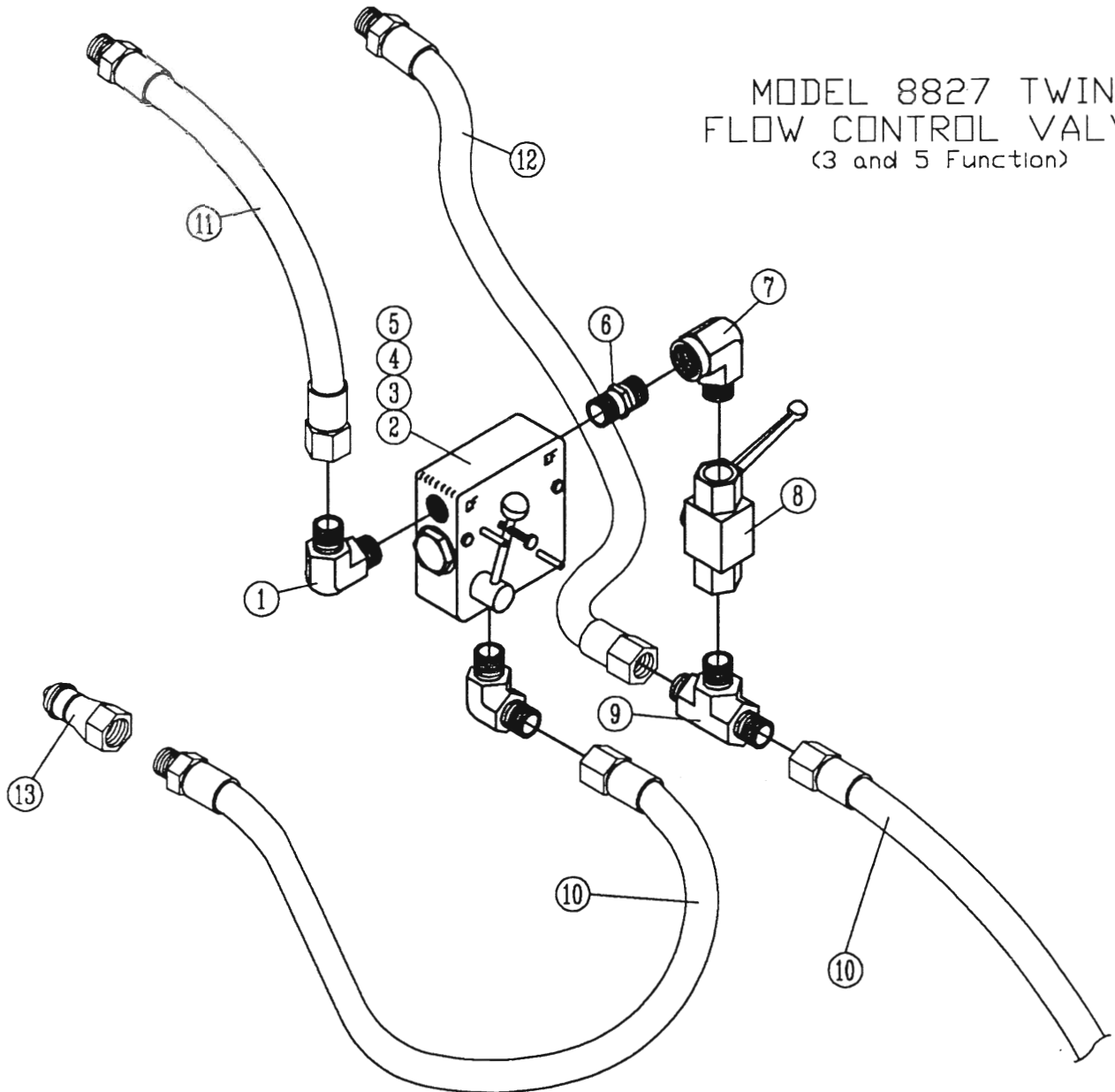


MODEL 8827 TWIN  
BASKET HANGER & DRIVE MOTOR  
HYDRAULIC LINE ROUTING  
(5 Function)



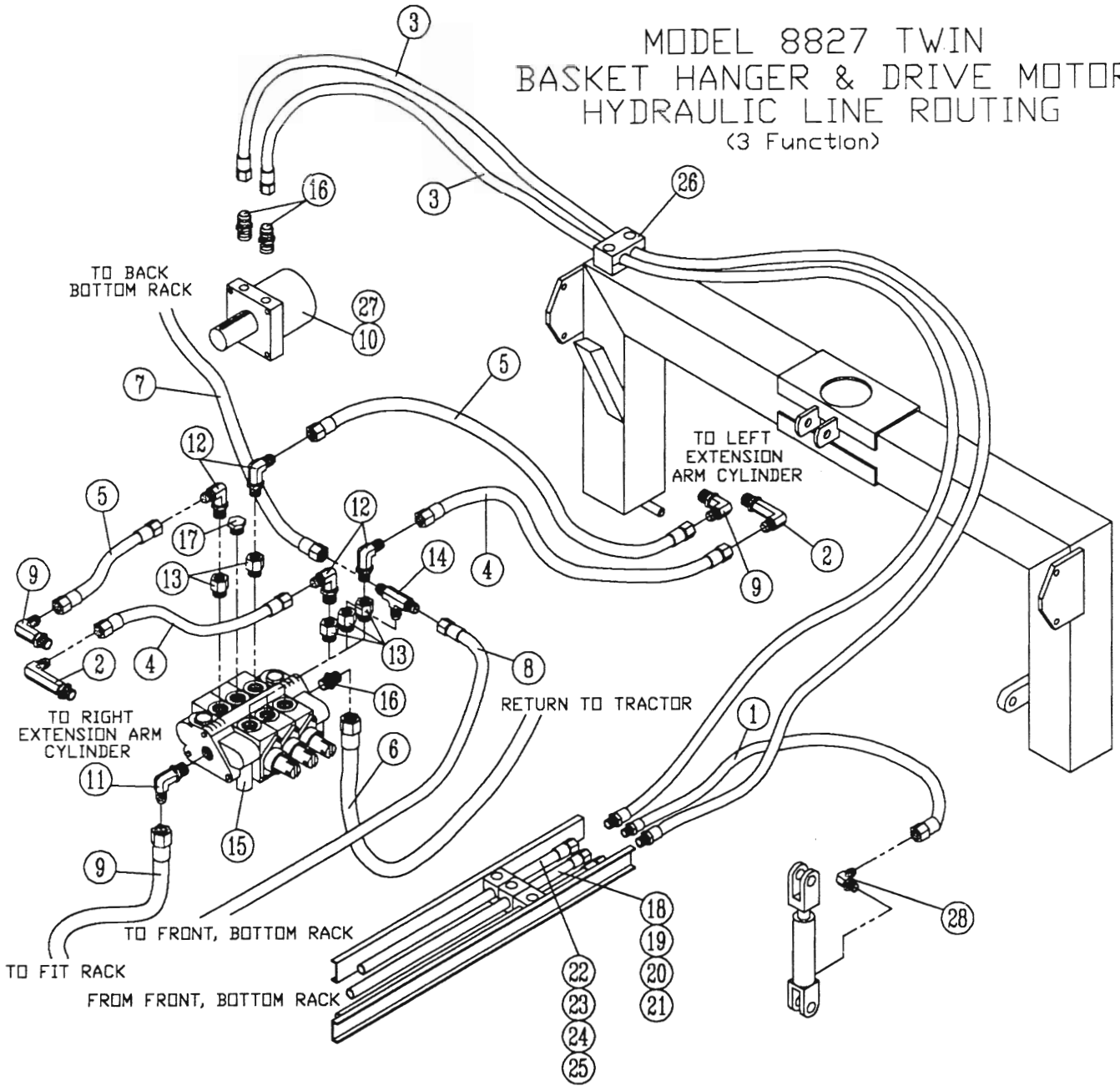
Ref. No.	Harrell No.	Description	No. Req'd.
1	79-167-88	Hose Ass'y. 70"	2
2	79-061-88	Hose Ass'y. 95" - AR-6	4
3	79-065-88	Hose Ass'y. 32" - AR-11	2
4	79-064-88	Hose Ass'y. 42" - AR-10	2
5	79-108-88	3/4" Twin Hose Clamp	2
6	79-050-88	"D" Ring Boss to 37° Flare	4
7	84-021-88	Tubing Ass'y. 3/8" x 75 1/2"	6
8	94-027-88	Tubing 3/8" x 75 1/2"	2
9	77-060-88	Flareless Tube End Cap	12
10	77-061-88	Ferrule 3/8" O.D. Tubing	12
11	84-022-88	Tubing Ass'y. 1/2" x 75 1/2"	4
12	94-028-88	Tubing 1/2" x 75 1/2"	4
13	77-062-88	Flareless Tube End Cap	12
14	77-063-88	Ferrule 1/2" O.D. Tubing	12
15	79-169-88	Straight Thread Connector	4
16	79-168-88	Straight Thread Elbow	2
17	79-162-88	Standard Drive Motor	2
18	79-163-88	Heavy Duty Drive Motor	Optional

MODEL 8827 TWIN  
FLOW CONTROL VALVE  
(3 and 5 Function)



Ref. No.	Harrell No.	Description	No. Req'd.
1	79-070-88	Male Elbow	2
2	79-042-88	Flow Control Valve	1
3	1412-0800	Hex Lock Nut 1/4UNC	2
4	2816-0824	Hex Head Cap Screw 1/4UNC x 2 1/2"	2
5	1702-0800	Flat Washer 1/4" SAE	2
6	79-068-38	Pipe Nipple	1
7	79-069-88	Street Elbow	1
8	79-072-88	Ball Valve	1
9	79-112-88	Male Branch Tee	1
10	79-068-88	Hose Ass'y. 1/2" x 66' - AR-1	2
11	79-071-88	Hose Ass'y. 1/2" x 20' - AR-2	1
12	79-066-88	Hose Ass'y. 1/2" x 18' - AR-3	1
13	79-212-36	Quick Disconnect Adaptor	2

# MODEL 8827 TWIN BASKET HANGER & DRIVE MOTOR HYDRAULIC LINE ROUTING (3 Function)



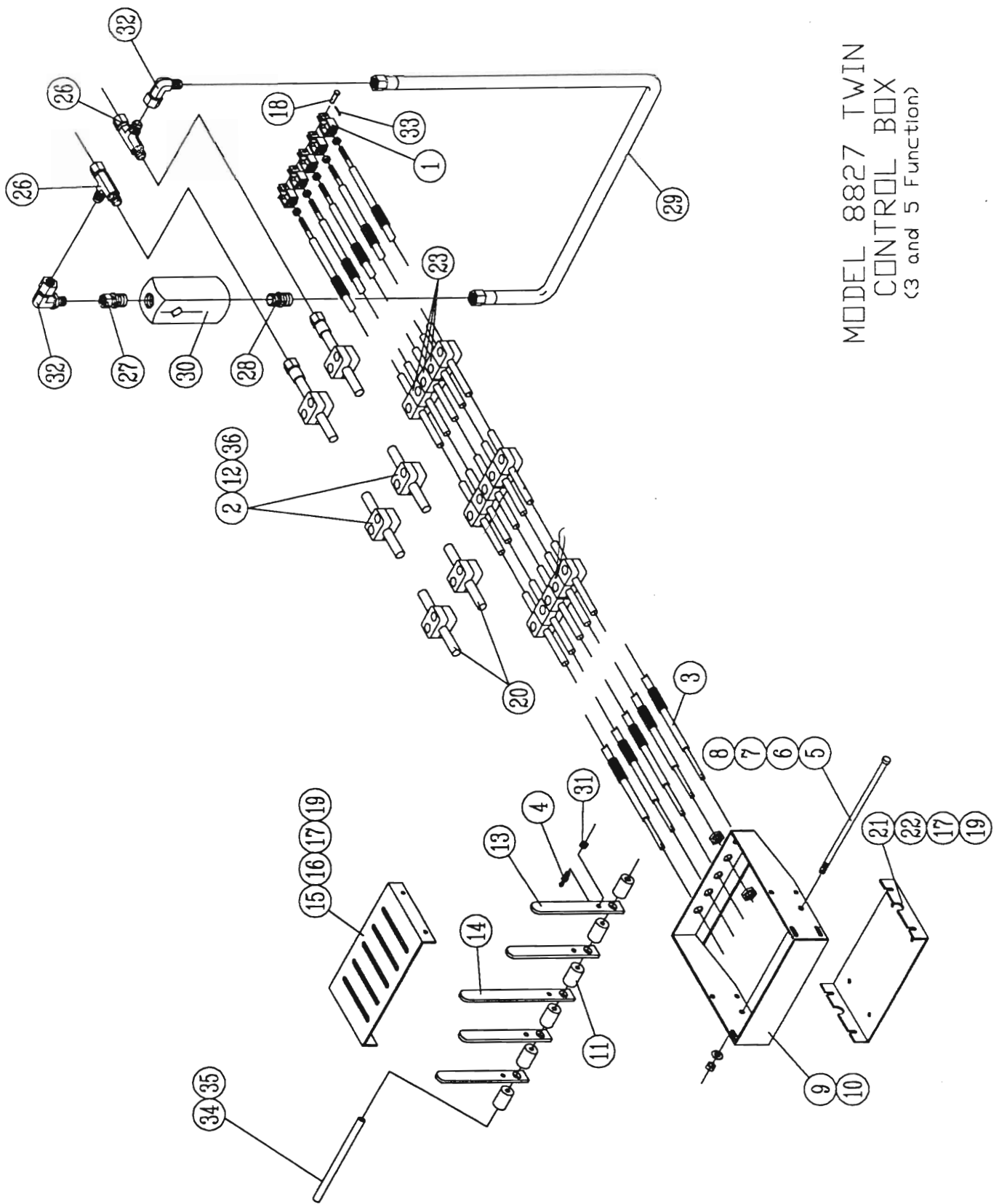
# Basket Hanger & Drive Motor Hydraulic Line Routing

(3 Function)

Ref. No.	Harrell No.	Description	No. Req'd.
1	79-167-88	Hose Ass'y. 70'	2
2	79-009-88	Elbow 90° Pipe To JIC (X-Long)	2
3	79-061-88	Hose Ass'y. 95' - AR-6	4
4	79-145-88	Hose Ass'y. 56' - AR-19	2
5	79-144-88	Hose Ass'y. 58' - AR-20	2
6	79-055-88	Hose Ass'y. 42' - AR-4	1
7	79-049-88	Hose Ass'y. 41' - AR-9	1
8	79-101-88	Hose Ass'y. 27' - <del>AR-12</del> AR-13	2
9	77-041-06	Elbow 90° Pipe To JIC	2
10	79-032-88	Hydraulic Drive Motor	2
11	79-094-88	Straight Thread Elbow	2
12	79-052-88	Straight Thread 90° Elbow	4
13	79-054-88	Straight Thread Reducer	5
14	<del>79-055-88</del>	JIC Swivel Branch Tee = 79-099-88	1
15	<del>79-030-88</del>	Gresen 3 Spool Valve	1
16	79-050-88	"O" Ring Boss to 37° Flare	2
17	79-029-85	Straight Thread Plug	1
18	84-021-88	Tubing Ass'y. 3/8" x 75 1/2"	2
19	94-027-88	Tubing 3/8" x 75 1/2"	2
20	77-060-88	Flareless Tube End Cap	4
21	77-061-88	Ferrule 3/8" O.D. Tubing	4
22	84-022-88	Tubing Ass'y. 1/2" x 75 1/2"	4
23	94-028-88	Tubing 1/2" x 75 1/2"	4
24	77-062-88	Flareless Tube End Cap	8
25	77-063-88	Ferrule 1/2" O.D. Tubing	8
26	79-108-88	3/4" Twin Hose Clamp	2
27	79-163-88	Heavy Duty Drive Motor	Optional
28	79-168-88	Male Elbow	2

79-108-88 includes 77-034-38 clamp  
 2816-1016 Bolt  
 77-037-38 Cover plate

MODEL 8827 TWIN  
CONTROL BOX  
(3 and 5 Function)

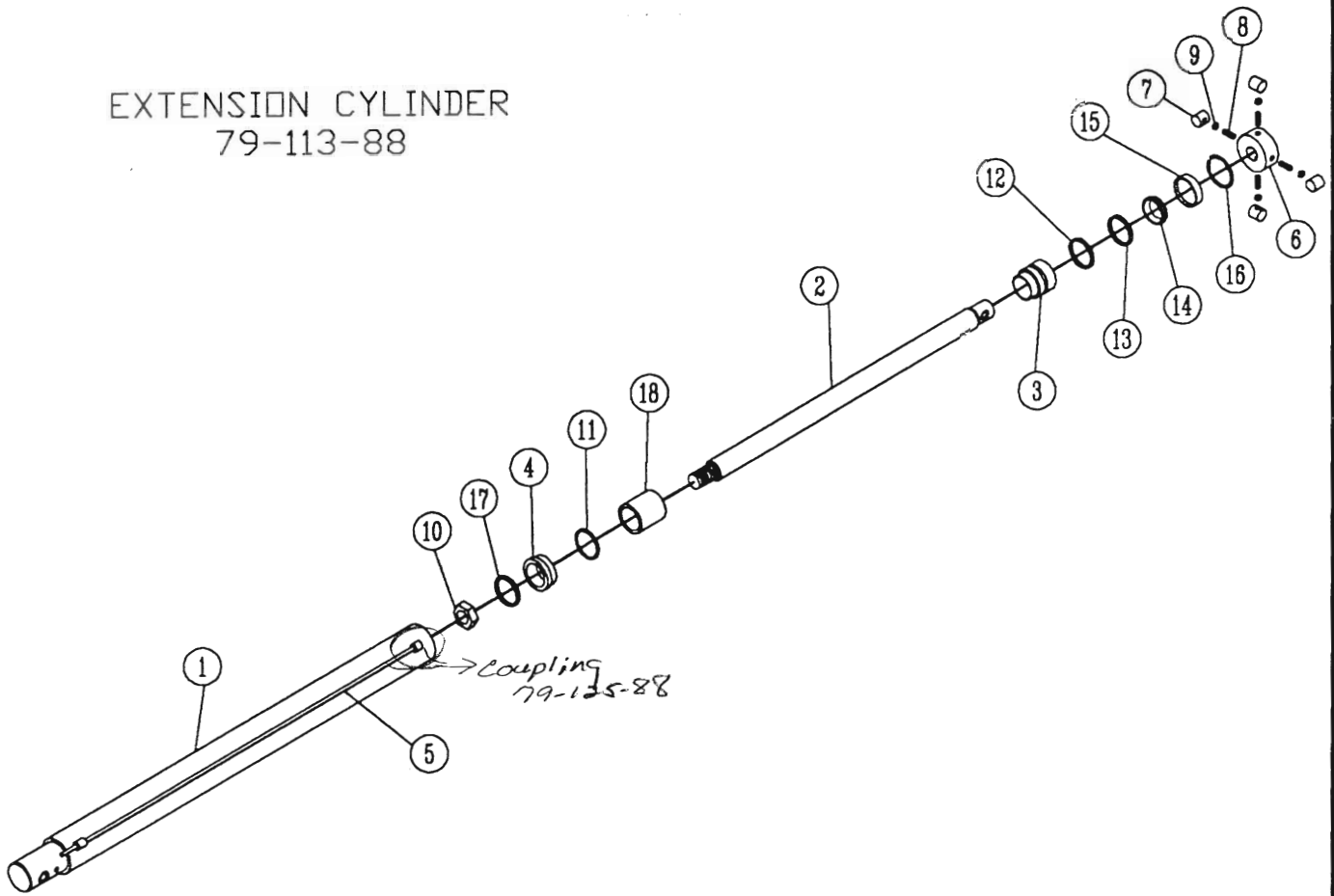


# Control Box Assembly

No. Req'd.

Ref. No.	Harrell No.	Description	No. Req'd.	
			3 Function	5 Function
1	79-073-88	Terminal Eyes	3	5
2	79-118-88	Stacking Kit	6	6
3	79-074-88	Morse Cable	3	5
4	79-075-88	Ball Joints	3	5
5	79-149-88	Hex Bolt 3/8"UNC x 11-9" (35.00) <i>than 5"</i>	1	
6	2813-1290	Hex Bolt 3/8"UNC x 9" <i>than 3"</i>		1
7	1702-1200	Flat Washers 3/8" SAE	1	1
8	1412-1200	Hex Lock Nut 3/8UNC	1	1
9	85-038-88	Control Box (3 Spool)	1	
10	85-005-88	Control Box (5 Spool)		1
11	96-033-88	Spacer	4	6
12	2816-1013	Hex Bolt 5/16"UNC x 1 3/8" Gr. 5	12	12
13	98-046-88	Handle	2	4
14	98-045-88	Handle	1	1
15	93-072-88	Cover	1	
16	93-045-88	Cover		1
17	1702-0800	Flat Washers 1/4" SAE	8	8
18	79-135-88	Clevis Pin	3	5
19	79-147-88	Thumbscrew	8	8
20	84-018-88	Hydraulic Tube Ass'y. 1/2" x 92"	2	2
21	93-071-88	Bottom Plate	1	
22	93-041-88	Bottom Plate		1
23	77-071-88	3/8" Hose Clamp	18	30
24	84-006-88	Complete Control Box Ass'y. (5 Spool) (inc. items 1&2, 4-22 ex. 5,9,15&21)		1
25	84-007-88	Complete Control Box Ass'y. (3 Spool) (inc. items 1&2, 4-21 ex. 6,10&16)	1	
26	77-004-38	Female Swivel Run Tee	2	2
27	79-120-88	Swivel Connector	1	1
28	77-047-06	Male Connector	1	1
29	84-029-88	Tube Assembly Excess Flow	1	1
30	<del>79-066-38</del>	<del>Flow Control Valve 79-146-88 CHECK VALVE</del>	1	1
31	0832-0800	Hex Nut 1/4UNF	9	15
32	77-058-06	Swivel 90° Elbow	2	2
33	79-136- <del>06</del> 88	Cotter Key 79-136-88	3	5
34	94-048-88	Control Box Bushing, 3-Spool <i>(S. Bushing 3 Spool)</i>	1	
35	94-049-88	Control Box Bushing, 5-Spool <i>(S. Bushing 5 Spool)</i>		1
36	77-072-88	1/2" Hose Clamp <i>(than 3")</i>	12	12

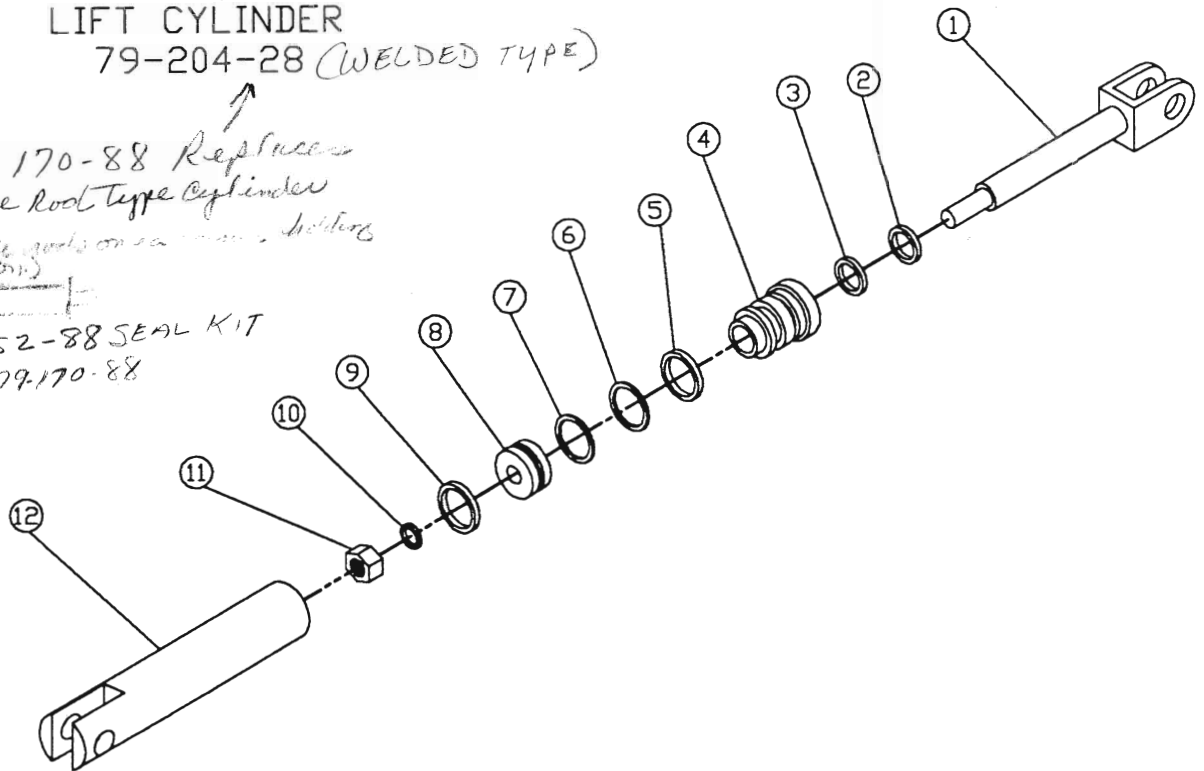
EXTENSION CYLINDER  
79-113-88



Ref. No.	Harrell No.	Description	No. Req'd.
1	77-102-88	Barrel Assy.	2
2	77-103-88	Piston Rod	2
3	77-104-88	Piston Gland	2
4	77-105-88	Piston	2
5	77-003-88	Manifold Tube	2
6	77-015-88	Cylinder Cap	2
7	79-006-88	Teflon Bushing	8
8	79-011-88	Stud 1/2"-13 UNC	8
9	1012-1600	Jam Nut 1/2"-13 UNC	8
10	77-106-88	Locknut	2
11	77-084-88	O-Ring	2
12	77-031-88	O-Ring	2
13	77-012-88	Backup Washer	2
14	77-009-88	U-Cup	2
15	77-013-88	Wiper	2
17	77-083-88	Bearing Ring	2
18	77-081-88	Spacer	2
N.S.	77-007-88	Crown Seal	2
N.S.	72-011-88	Seal Kit (consist of items 13-18)	2

LIFT CYLINDER  
79-204-28 (WELDED TYPE)

79-170-88 Replaces  
THIS IS Tie Rod Type Cylinder  
(See tie rods on seal kit  
spec. card)  
77-152-88 SEAL KIT  
FOR 79-170-88

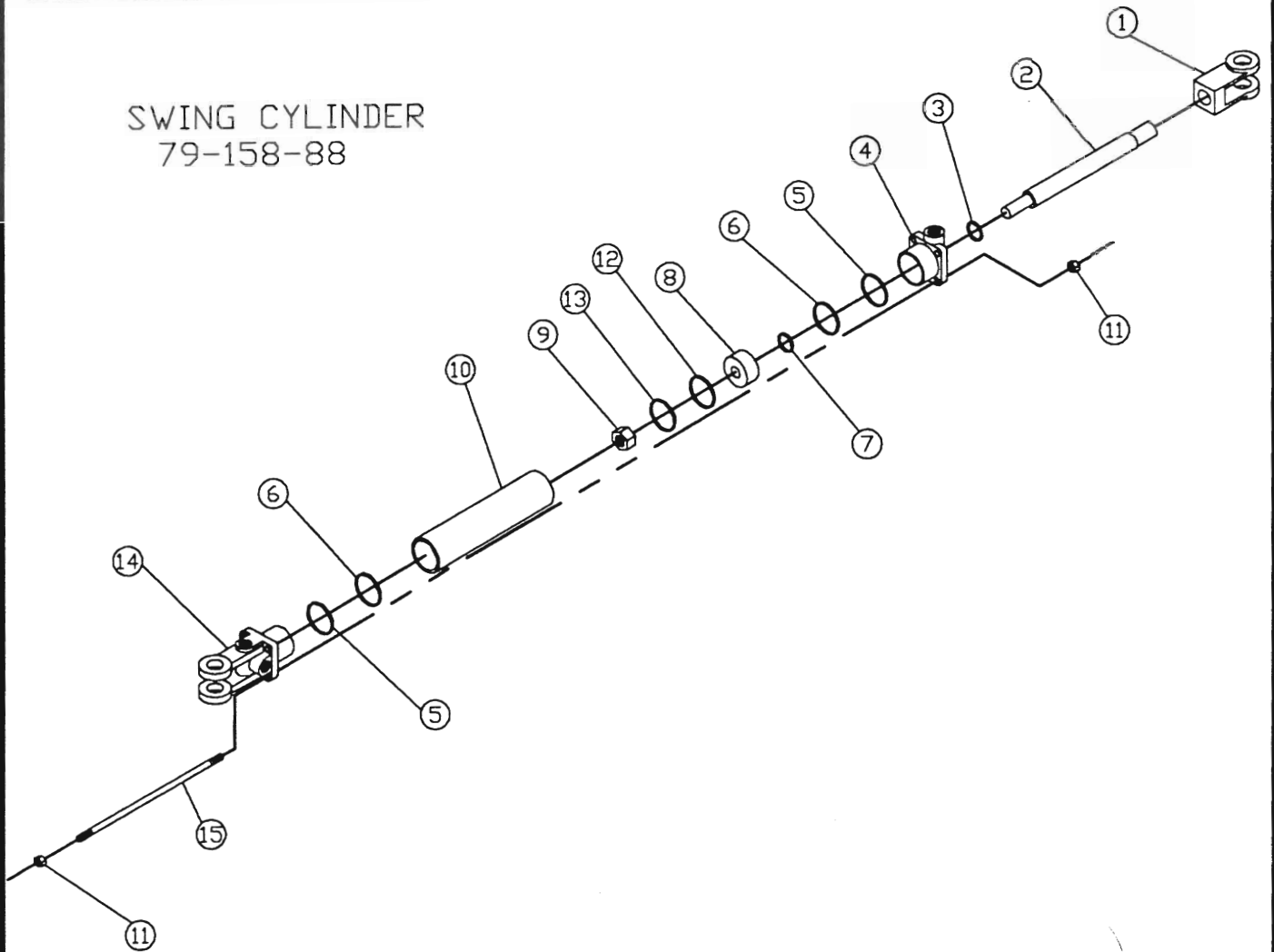


Ref. No.	Harrell No.	Description	No. Req'd.
1	77-001-28	Piston Rod	2
2	77-011-28	Wiper	2
3	77-010-28	U-Cup	2
4	77-003-28	Gland	2
5	77-009-28	Square Retaining Ring	2
6	77-008-28	Back Up Washer	2
7	77-007-28	O-Ring	2
8	77-004-28	Piston	2
9	77-005-28	Crown Seal	2
10	77-006-28	O-Ring	2
11	1412-2400	Lock Nut 3/4-16UNC	2
12	77-002-28	Cylinder Barrel	2
N.S.	72-202-28	Seal Kit (ONLY FOR 79-204-28 WELDED CYL)	2

NS 79-171-88 BREATHER  
NS 79-178-88 ADAPTER



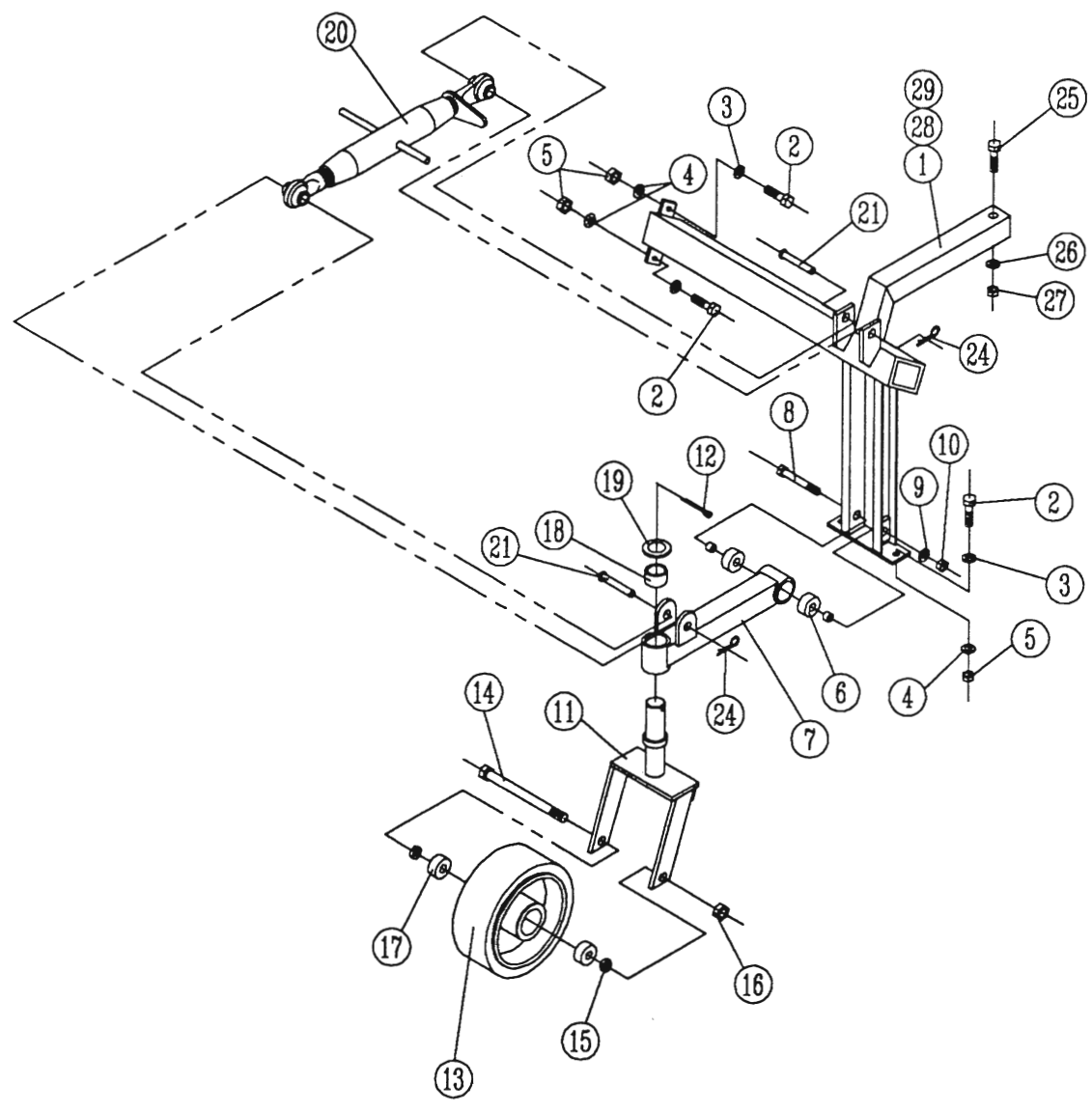
SWING CYLINDER  
79-158-88



Ref. No.	Harrell No.	Description	No. Req'd.
1	77-133-88	Rod Clevis	2
2	77-134-88	Cylinder Rod	2
3	77-135-88	Seal	2
4	77-136-88	Rod Cap	2
5	77-137-88	Back Up Washer	4
6	77-138-88	O-Ring	4
7	77-139-88	Rod Seal	2
8	77-140-88	Piston	2
9	1411-2400	Hex Lock Nut 3/4"-16UNF	2
10	77-141-88	Barrel	2
11	0811-1200	Hex Nut 3/8"-16UNC	16
12	77-142-88	O-Ring	2
13	77-143-88	Piston Ring	2
14	77-144-88	Clevis Cap	2
15	77-145-88	Tie Rod	8
N.S.	<del>77-152-88</del>	Seal Kit 77-152-88	2

OPTIONAL GAUGE WHEEL

MODEL 8827 TWIN  
GAUGE WHEEL  
(3 and 5 Function)



## Gauge Wheel Assembly

Ref. No.	Harrell No.	Description	No. Req'd.
1	84-014-88	Main Frame Consist of (22 & 23)	1
2	2816-1612	Hex Head Bolt 1/2UNC x 1 1/4"	5
3	1702-1600	Flat Washers 1/2" SAE	3
4	1602-1600	Lock Washers 1/2" SAE	5
5	1412-1600	Hex Lock Nut 1/2UNC	5
6	77-052-88	Sealed Ball Bearing	2
7	85-047-85	Pivot Tube	1
8	2816-2450	Hex Head Bolt 3/4UNC x 5"	1
9	1702-2400	Flat Washer 3/4" SAE	2
10	1412-2400	Hex Lock Nut 3/4UNC	1
11	85-020-88	Yoke	1
12	79-089-88	Cotter Pin 1/4" x 3"	1
13	79-133-88	Tire & Rim Assembly (79-177-88)	1
14	2816-2480	Hex Head Bolt 3/4UNC x 8"	1
15	1702-2400	Flat Washer 3/4" SAE	2
16	1412-2400	Hex Lock Nut 3/4UNC	1
17	79-088-88	Sealed Ball Bearing	2
18	94-032-88	Bronze Bushing	2
19	93-081-88	Spacer	1
20	79-022-88	Angle Adjusting Arm	1
21	79-082-88	Clevis Pin 3/4" x 3 1/4"	2
22	84-016-88	Complete Gauge Wheel Ass'y. Right Front & Left Rear	2
23	84-017-88	Complete Gauge Wheel Ass'y. Right Rear & Left Front	2
24	79-043-06	Hair Pin Clip	2
25	2816-2030	Hex Head Bolt 5/8UNC x 3" Gr. 5	1
26	1702-2000	Flat Washer 5/8" SAE	2
27	1412-2000	Hex Lock Nut 5/8UNC	1
28	85-087-88	Gage Wheel Mount, L.H.	1
29	85-088-88	Gage Wheel Mount, R.H.	1
NS	94-068-88	Spacer (SHIP OUT W/ TIRE-RIM ASSY)	2

