

Build something great™

Boral **TruExterior®** Siding & Trim

# Product Guide





Products shown: Bevel Siding, Trim

# So Authentic. So Reliable. Nothing Compares.

---

Boral TruExterior® Siding & Trim offers real workability that exceeds that of wood without sacrificing the look, feel and character of traditional wood products, creating a balance of performance and aesthetics that cannot be found with other manmade alternatives.



Pioneering an entirely new category of building materials made with the revolutionary poly-ash material, Boral TruExterior® Siding & Trim is the only product available today that addresses both the moisture- and movement-related issues commonly seen with other exterior materials on the market.

---

# addresses both moisture- and movement- related issues

---

## Moisture

Boral TruExterior® products contain no wood fiber, preventing the moisture-related issues that commonly plague wood, wood composites and fiber cement.

- Virtually no moisture cycling
- No need to prime ends or field cuts
- Resists rot and termite attacks†
- No swelling†
- No cracking or splitting
- No cupping or checking†
- Suitable for ground contact

## Movement

Boral TruExterior® products offer a high level of dimensional stability, eliminating many of the movement-related issues seen with PVC and vinyl.

- Maintains a high level of dimensional stability†
- Installation is the same regardless of the season
- No special precautions or adhesives to control or limit movement
- No need for special paints
- No limitations on paint colors

†Please see Boral TruExterior® Siding & Trim Limited Warranties and Product Data Sheets for proprietary test results, located at [www.boraltruexterior.com](http://www.boraltruexterior.com). Always follow local building codes and construction best practices. See the complete Installation Guidelines for Boral TruExterior® Siding & Trim at [www.boraltruexterior.com](http://www.boraltruexterior.com).

# Cut. Fasten. Paint. **Done.**

It really is that simple. That's because Boral TruExterior® Siding & Trim offers phenomenal performance, remarkable workability and a lasting look while eliminating the need for gluing, gapping and other cumbersome and costly installation techniques.

## **Application**

- Designed for use in non-structural applications
- Suitable for ground contact
- Can be used in moisture-prone areas

## **Expansion & Contraction**

- No special precautions or adhesives are required to control or limit movement caused by moisture or temperature changes
- Traditional exterior-grade caulks, auto-body or wood fillers are all acceptable for filling nail holes

## **Tools**

- Installed using proven woodworking tools and methods
- Carbide-tipped blades and bits are recommended for a longer tool life

## **Fastening**

- Accepts a wide variety of high-quality exterior-grade fasteners that are suitable for the local environment
- Can be fastened close to the edge
- No need for pre-drilling
- No mushrooming

## **Painting**

- Boral TruExterior® products come pre-primed and do not require paint
- No need to prime end cuts
- Can be painted with any high-grade exterior paint when following the paint manufacturer's instructions
- Can be painted any color without special precautions as it is not prone to movement caused by heat gain from dark colors†
- Paint lasts longer than on wood because Boral TruExterior® products cycle virtually no moisture†

# Boral TruExterior®

## Our Product Offering

The exclusive poly-ash technology platform behind Boral TruExterior® Siding & Trim creates a high-performance material with a high level of dimensional stability and resistance to moisture, making it ideal for a number of exterior applications. With a complete offering of 5/8, 4/4, 5/4 and 2x Trim, Accessories, Beadboard and Siding, Boral TruExterior® Siding & Trim has everything you need to create a polished and professional installation.

## SIDING BEADBOARD TRIM ACCESSORIES

# Bevel Collection

## About the Bevel Collection

Bevel Siding is the newest addition to Boral TruExterior® Siding – the first manmade siding profiles to genuinely replicate the natural aesthetic of real wood while maintaining a high level of dimensional stability.

Recreating the look and character of traditional clapboard or bevel lap siding, Boral TruExterior® Siding's Bevel profile offers the true taper and shadow line effect historically seen with cedar and redwood siding, without the moisture-related issues that commonly plague wood.

All images below depict Boral TruExterior® Bevel Siding



## Bevel

The Bevel profile authentically replicates the look of cedar and redwood siding.

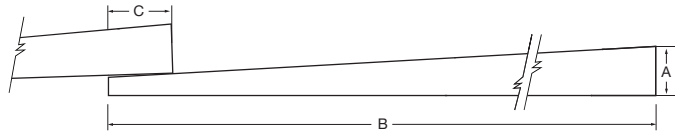
Available Finish:



smooth



Nominal Size	Actual Thickness (A)	Actual Width (B)	Minimum Overlap (C)
½ x 6	0.50"	5.50"	1.0"
½ x 8	0.50"	7.25"	1.0"
¾ x 10	0.75"	9.25"	1.0"



## Rabbeted Bevel

This variation of the Bevel profile is rabbeted to create a perfectly spaced overlap.

Available Finish:



smooth



Coming Soon!

## Beaded Bevel

The Beaded Bevel profile features a beaded edge that adds detail and charm.

Available Finish:



smooth



Coming Soon!



# Craftsman Collection™

## About the Craftsman Collection™

The Boral TruExterior® Siding Craftsman Collection™ offers a variety of authentic, full-thickness profiles with bold, defined shapes and the natural aesthetic of traditional wood siding, all without the maintenance and upkeep associated with exterior wood products.

Six historically and architecturally accurate profiles – Channel, Channel Bevel, Cove/Dutch Lap, Nickel Gap, Shiplap and V-Rustic – are the ideal solution for homeowners who desire the look, feel and character of authentic wood siding while avoiding rotting, cracking, splitting and termite attacks.



## V-Rustic

The V-Rustic profile features a deep "V" groove that creates an appealing shadow line effect

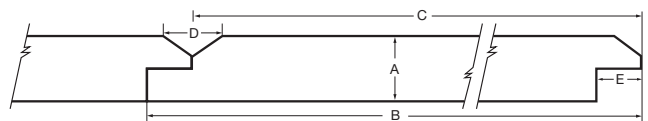
Available Finish:



smooth



Nominal Size	Actual Thickness (A)	Actual Width (B)	Reveal (C)	Channel (D)	Tongue (E)
1 x 6	0.6875"	5.50"	5.0"	0.625"	0.50"
1 x 8	0.6875"	7.50"	7.0"	0.625"	0.50"
1 x 10	0.6875"	9.50"	9.0"	0.625"	0.50"



## Cove/Dutch Lap

The Cove/Dutch Lap profile features a subtle curve that creates a unique, eased appearance

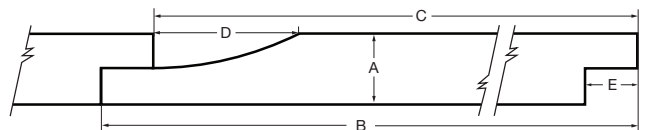
Available Finish:



smooth



Nominal Size	Actual Thickness (A)	Actual Width (B)	Reveal (C)	Channel (D)	Tongue (E)
1 x 6	0.6875"	5.50"	4.969"	1.469"	0.531"
1 x 8	0.6875"	7.25"	6.719"	1.469"	0.531"
1 x 10	0.6875"	9.25"	8.719"	1.469"	0.531"



## Channel

The Channel profile's wide groove creates a rich shadow line effect

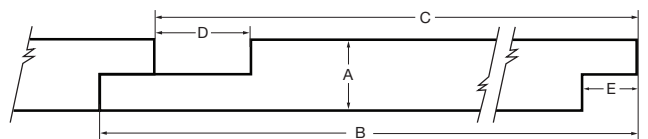
Available Finish:



smooth



Nominal Size	Actual Thickness (A)	Actual Width (B)	Reveal (C)	Channel (D)	Tongue (E)
1 x 6	0.6875"	5.50"	4.969"	0.969"	0.531"
1 x 8	0.6875"	7.25"	6.719"	0.969"	0.531"
1 x 10	0.6875"	9.25"	8.719"	0.969"	0.531"



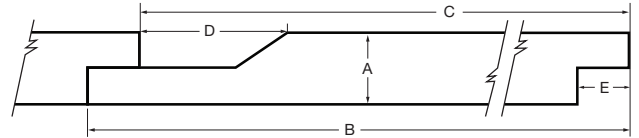
## Channel Bevel

The Channel Bevel profile features a channel-style joint with an angled edge

Available Finish:



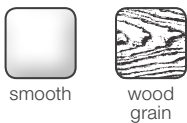
Nominal Size	Actual Thickness (A)	Actual Width (B)	Reveal (C)	Channel (D)	Tongue (E)
1 x 6	0.6875"	5.50"	4.969"	1.469"	0.531"
1 x 8	0.6875"	7.50"	6.969"	1.469"	0.531"
1 x 10	0.6875"	9.50"	8.969"	1.469"	0.531"



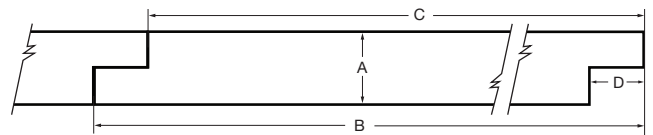
## Shiplap

The Shiplap profile is edge-matched for a tight joint appearance. It is intended to be installed with the finished surface exposed and is not reversible

Available Finishes:  
(not reversible)



Nominal Size	Actual Thickness (A)	Actual Width (B)	Reveal (C)	Tongue (D)
1 x 6	0.6875"	5.50"	4.969"	0.531"
1 x 8	0.6875"	7.25"	6.719"	0.531"
1 x 10	0.6875"	9.25"	8.719"	0.531"



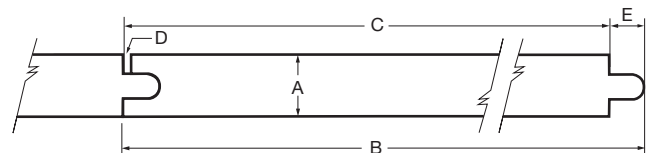
## Nickel Gap

The tongue-and-groove profile is self-gapping, creating a consistent nickel-sized space between each board

Available Finish:



Nominal Size	Actual Thickness (A)	Actual Width (B)	Reveal (C)	Gap (D)	Tongue (E)
1 x 4	0.6875"	3.50"	3.159"	0.08"	0.341"
1 x 6	0.6875"	5.50"	5.159"	0.08"	0.341"
1 x 8	0.6875"	7.25"	6.909"	0.08"	0.341"
1 x 10	0.6875"	9.25"	8.909"	0.08"	0.341"



# Beadboard

## About Boral TruExterior® Beadboard

Including 4-inch, double-4, 6-inch and double-6 profiles, Boral TruExterior® Beadboard is ideal for porch ceilings, soffits and decorative wall applications, and allows for a variety of installations, as it can be attached in either parallel or perpendicular directions.

The high level of dimensional stability<sup>†</sup> allows the product to be installed 24" on center without the need for additional backing for added support. Its "tongue-and-groove" design allows it to be fastened through the tongue, resulting in a clean look free from visible fasteners, or it can be reversed to offer a contemporary "V-groove" appearance.

All images below depict Boral TruExterior® Beadboard





## Single Beadboard

Two distinct beaded patterns — 4" and 6" — to suit the most popular design trends

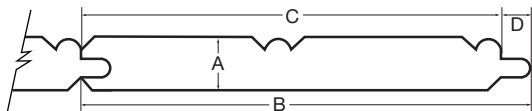


Available Finish:



smooth

Nominal Size	Actual Thickness (A)	Actual Width (B)	Reveal (C)	Tongue (D)
5/8 x 4	0.625"	3.50"	3.16"	0.34"
5/8 x 6	0.625"	5.25"	4.91"	0.34"



## Double Beadboard

The same appearance as the single-profile products, but with twice the coverage

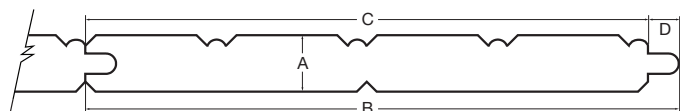


Available Finish:



smooth

Nominal Size	Actual Thickness (A)	Actual Width (B)	Reveal (C)	Tongue (D)
5/8 x 8	0.625"	6.6825"	6.3425"	0.34"
5/8 x 12	0.625"	10.25"	9.91"	0.34"



# Trim

## About Boral TruExterior® Trim

Designed to be used in non-load-bearing applications, Boral TruExterior® Trim is suitable for ground contact and moisture-prone areas, which makes it ideal for exterior trim applications such as fascia, door trim, soffits, rake boards and a variety of other exterior applications. Because of its high level of dimensional stability<sup>†</sup>, there is no need to prime ends or field cuts. Plus, it can be painted any color. Boral TruExterior® Trim accepts a wide variety of fasteners and can be installed using standard woodworking tools and methods.

All images below depict Boral TruExterior® Trim





Boral TruExterior® Trim

5/8 Trim Sizes		1X Trim Sizes		5/4 Trim Sizes		2X Trim Sizes	
Nominal	Actual	Nominal	Actual	Nominal	Actual	Nominal	Actual
—	—	—	—	—	—	2 x 2	1 1/2" x 1 1/2"
—	—	1 x 3	3/4" x 2 1/2"	5/4 x 3	1" x 2 1/2"	—	—
5/8 x 4	5/8" x 3 1/2"	1 x 4	3/4" x 3 1/2"	5/4 x 4	1" x 3 1/2"	2 x 4	1 1/2" x 3 1/2"
—	—	1 x 5	3/4" x 4 1/2"	5/4 x 5	1" x 4 1/2"	—	—
5/8 x 6	5/8" x 5 1/2"	1 x 6	3/4" x 5 1/2"	5/4 x 6	1" x 5 1/2"	2 x 6	1 1/2" x 5 1/2"
5/8 x 8	5/8" x 7 1/4"	1 x 8	3/4" x 7 1/4"	5/4 x 8	1" x 7 1/4"	2 x 8	1 1/2" x 7 1/4"
5/8 x 10	5/8" x 9 1/4"	1 x 10	3/4" x 9 1/4"	5/4 x 10	1" x 9 1/4"	2 x 10	1 1/2" x 9 1/4"
5/8 x 12	5/8" x 11 1/4"	1 x 12	3/4" x 11 1/4"	5/4 x 12	1" x 11 1/4"	2 x 12	1 1/2" x 11 1/4"

Boral TruExterior® Trim is reversible with wood grain on one side and a smooth finish on the reverse. 16' lengths are available in all sizes with 12' and 20' lengths available in 4/4, 5/4 and 2x Trim.

Available Finishes:  
(Reversible)



smooth



wood grain

# Accessories

## About Boral TruExterior® Siding & Trim Accessories

Boral TruExterior® Siding & Trim Accessories make it easy to create polished, professional-looking siding and trim installations. Decorative yet functional, the poly-ash accessories are designed to go where other materials can't, making them the perfect complement to cedar, fiber cement and other traditional siding products, as they are suitable for ground, roofline and masonry contact.

### Skirt Board

Provides a decorative yet functional way to create the required clearance between siding and grade

Available Finishes:  
(not reversible)



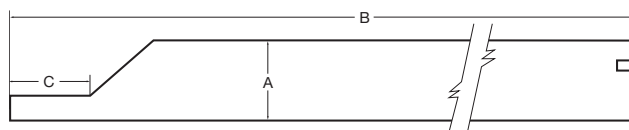
smooth



wood grain



Nominal Size	Actual Thickness (A)	Actual Width (B)	Tongue (C)
1 x 6	0.75"	5.50"	1.0"
1 x 8	0.75"	7.25"	1.0"
5/4 x 6	1.0"	5.50"	1.0"
5/4 x 8	1.0"	7.25"	1.0"



### Plowed Fascia

Rabbeted groove on the reverse accepts soffit panel for an easier install

Available Finishes:  
(not reversible)



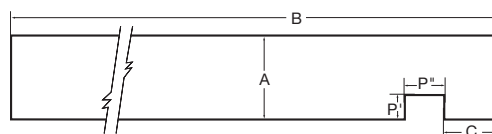
smooth



wood grain



Nominal Size	Actual Thickness (A)	Actual Width (B)	Distance to Edge (C)	Pocket (P' x P'')
1 x 6	0.75"	5.50"	0.625"	0.375" x 0.5"
1 x 8	0.75"	7.25"	0.625"	0.375" x 0.5"





## Rabbeted Trim with Window Pocket

The rabbeted groove helps trim to sit flush over the window's nailing flange, eliminating the need for cuts or shims



Available Finishes:  
(not reversible)

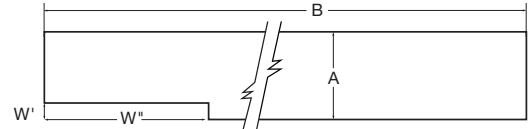


smooth



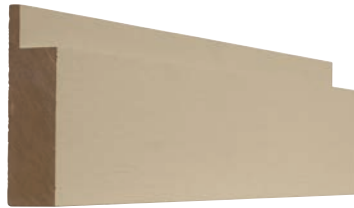
wood grain

Nominal Size	Actual Thickness (A)	Actual Width (B)	Window Pocket (W' x W'')
5/4 x 4	1.0"	3.50"	0.187" x 1.88"
5/4 x 6	1.0"	5.50"	0.187" x 1.88"
5/4 x 8	1.0"	7.25"	0.187" x 1.88"



## Rabbeted Trim with Siding Pocket

Perfect for end wall terminations, this trim with a 3/4" siding pocket accepts all Boral TruExterior® Siding profiles



Available Finishes:  
(not reversible)

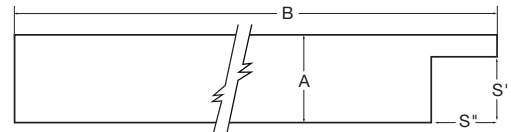


smooth



wood grain

Nominal Size	Actual Thickness (A)	Actual Width (B)	Siding Pocket (S' x S'')
5/4 x 3	1.0"	2.50"	0.75" x 0.75"
5/4 x 4	1.0"	3.50"	0.75" x 0.75"
5/4 x 5	1.0"	4.50"	0.75" x 0.75"
5/4 x 6	1.0"	5.50"	0.75" x 0.75"
5/4 x 8	1.0"	7.25"	0.75" x 0.75"



## Rabbeted Trim with Window and Siding Pocket

The ultimate accessory to build a neat, professional-looking window surround



Available Finishes:  
(not reversible)

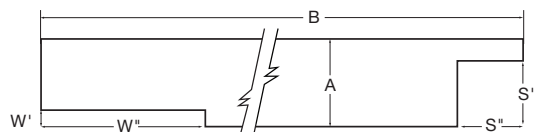


smooth



wood grain

Nominal Size	Actual Thickness (A)	Actual Width (B)	Window Pocket (W' x W'')	Siding Pocket (S' x S'')
5/4 x 4	1.0"	3.50"	0.187" x 1.88"	0.75" x 0.75"
5/4 x 6	1.0"	5.50"	0.187" x 1.88"	0.75" x 0.75"
5/4 x 8	1.0"	7.25"	0.187" x 1.88"	0.75" x 0.75"





## Sustainability

The sustainable properties of Boral TruExterior® Siding & Trim are a result of a combination of proprietary polymer chemistry and highly refined, recovered coal combustion products (fly ash), which are endorsed by the U.S. Green Building Council (USGBC) for use in construction materials.

- Cradle to Cradle Certified™
- Contains a minimum of 70% recycled content – verified by SCS Global Services



## Code Listings

Boral TruExterior® Siding & Trim have undergone rigorous internal and third-party testing to provide building officials, architects, contractors, specifiers, designers and others with reliable, high-performing products.

- PEI Evaluation Service Report ESR-14090 – Trim and Beadboard
- PEI Evaluation Service Report ESR-13069 – Siding
- ICC-ES Evaluation Report ESR-3597 verifies that Boral TruExterior® Siding meets code requirements\*
- California's Wildland-Urban Interface (WUI) listed
- Florida Product Approval FL17285

## Project Estimator

V-Rustic		Cove/Dutch Lap		Channel	
Nominal Size	Boards per square	Nominal Size	Boards per square	Nominal Size	Boards per square
1 x 6	15	1 x 6	15	1 x 6	15
1 x 8	11	1 x 8	12	1 x 8	12
1 x 10	9	1 x 10	9	1 x 10	9

Channel Bevel		Shiplap		Nickel Gap	
Nominal Size	Boards per square	Nominal Size	Boards per square	Nominal Size	Boards per square
1 x 6	15	1 x 6	15	1 x 4	24
1 x 8	11	1 x 8	12	1 x 6	15
1 x 10	9	1 x 10	9	1 x 8	11
				1 x 10	10







Bevel 1" lap		Bevel 1.25" lap		Bevel 1.5" lap	
Nominal Size	Boards per square	Nominal Size	Boards per square	Nominal Size	Boards per square
1 x 6	17	1 x 6	18	1 x 6	19
1 x 8	12	1 x 8	12	1 x 8	12
1 x 10	9	1 x 10	9	1 x 10	10

\*ESR-3597 does not include the new Bevel Siding profile

## Trim

5/8 Trim Sizes		1X Trim Sizes		5/4 Trim Sizes		2X Trim Sizes	
Nominal	Actual	Nominal	Actual	Nominal	Actual	Nominal	Actual
—	—	—	—	—	—	2 x 2	1 1/2" x 1 1/2"
—	—	1 x 3	3/4" x 2 1/2"	5/4 x 3	1" x 2 1/2"	—	—
5/8 x 4	5/8" x 3 1/2"	1 x 4	3/4" x 3 1/2"	5/4 x 4	1" x 3 1/2"	2 x 4	1 1/2" x 3 1/2"
—	—	1 x 5	3/4" x 4 1/2"	5/4 x 5	1" x 4 1/2"	—	—
5/8 x 6	5/8" x 5 1/2"	1 x 6	3/4" x 5 1/2"	5/4 x 6	1" x 5 1/2"	2 x 6	1 1/2" x 5 1/2"
5/8 x 8	5/8" x 7 1/4"	1 x 8	3/4" x 7 1/4"	5/4 x 8	1" x 7 1/4"	2 x 8	1 1/2" x 7 1/4"
5/8 x 10	5/8" x 9 1/4"	1 x 10	3/4" x 9 1/4"	5/4 x 10	1" x 9 1/4"	2 x 10	1 1/2" x 9 1/4"
5/8 x 12	5/8" x 11 1/4"	1 x 12	3/4" x 11 1/4"	5/4 x 12	1" x 11 1/4"	2 x 12	1 1/2" x 11 1/4"

## Craftsman Collection™ Siding








V-Rustic		Cove/Dutch Lap		Channel		Channel Bevel		Shiplap		Nickel Gap	
											
Nominal	Actual	Nominal	Actual	Nominal	Actual	Nominal	Actual	Nominal	Actual	Nominal	Actual
1 x 6	11/16" x 5 1/2"	1 x 6	11/16" x 5 1/2"	1 x 6	11/16" x 5 1/2"	1 x 6	11/16" x 5 1/2"	1 x 6	11/16" x 5 1/2"	1 x 4	11/16" x 3 1/2"
1 x 8	11/16" x 7 1/2"	1 x 8	11/16" x 7 3/4"	1 x 8	11/16" x 7 1/4"	1 x 8	11/16" x 7 1/2"	1 x 8	11/16" x 7 3/4"	1 x 6	11/16" x 5 1/2"
1 x 10	11/16" x 9 1/2"	1 x 10	11/16" x 9 3/4"	1 x 10	11/16" x 9 1/4"	1 x 10	11/16" x 9 1/2"	1 x 10	11/16" x 9 3/4"	1 x 8	11/16" x 7 1/4"
										1 x 10	11/16" x 9 1/4"

## Bevel Collection Siding

Bevel		Beaded Bevel	Rabbeted Bevel
		Coming soon!	Coming soon!
Nominal	Actual		
1/2 x 6	1/2" x 5 1/2"		
1/2 x 8	1/2" x 7 1/4"		
3/4 x 10	3/4" x 9 1/4"		

## Beadboard

## Accessories

Single		Double		Skirt Board		Plowed Fascia		Rabbeted Trim with Window Pocket		Rabbeted Trim with Siding Pocket		Rabbeted Trim with Window and Siding Pocket	
													
Nominal	Actual	Nominal	Actual	Nominal	Actual	Nominal	Actual	Nominal	Actual	Nominal	Actual	Nominal	Actual
5/8 x 4	5/8" x 3 1/2"	5/8 x 8	5/8" x 6 11/16"	1 x 6	3/4" x 5 1/2"	1 x 6	3/4" x 5 1/2"	5/4 x 4	1" x 3 1/2"	5/4 x 3	1" x 2 1/2"	5/4 x 4	1" x 3 1/2"
5/8 x 6	5/8" x 5 1/4"	5/8 x 12	5/8" x 10 1/4"	1 x 8	3/4" x 7 1/4"	1 x 8	3/4" x 7 1/4"	5/4 x 6	1" x 5 1/2"	5/4 x 4	1" x 3 1/2"	5/4 x 6	1" x 5 1/2"
				5/4 x 6	1" x 5 1/2"			5/4 x 8	1" x 7 1/4"	5/4 x 5	1" x 4 1/2"	5/4 x 8	1" x 7 1/4"
				5/4 x 8	1" x 7 1/4"					5/4 x 6	1" x 5 1/2"		
										5/4 x 8	1" x 7 1/4"		

**Note:** All Boral TruExterior® Products are available in standard 16' lengths. 12' and 20' lengths are also available in 4/4, 5/4 and 2x Trim.

\*Please see Boral TruExterior® Siding & Trim Limited Warranties and Product Data Sheets for proprietary test results, located at [www.BoralTruExterior.com](http://www.BoralTruExterior.com)

**Made in USA**

1.888.9BORAL9 | [www.BoralTruExterior.com](http://www.BoralTruExterior.com)

©2016 Boral Composites Inc. 1/17

**STONE  
SIDING  
TRIM  
ROOFING**

