

West Bellfort Property Owners Association

www.westbellfortpoa.com

Monthly Newsletter

February 2017

SUPER BOWL 51

See page 4 and the maps at back for important information about road closures, parking and getting around downtown during Super Bowl 51 and its related events

SAVE THE DATE!

Houston Livestock Show and Rodeo March 7th – 26th – See page 6 for Rodeo history and page 8 for the concert line up!

WBPOA BOARD MEMBERS:

Barbara Hite, President
Jeannette Calhoun, Vice President
Phil Abrams, Secretary
Marc Warren, Treasurer
Mari Angelo, Board Member
Asher Belles, Board Member
Joy Cunningham, Board Member
Dyaz Godfrey, Board Member
Glenn Gundy, Board Member
Neal Harris, Board Member
Zally Lazarus, Board Member
Jonah Nathan, Board Member
Marcy Williams, Board Member

2017 POA DUES

PLEASE NOTE: YOUR POA HOMEOWNER DUES ARE DUE!! IF YOU HAVE CANNOT FIND YOUR 2017 INVOICE, PLEASE CONTACT STERLING MANAGEMENT. YOU CAN SPEAK WITH ANYONE WHO ANSWERS. ALTERNATIVELY, PLEASE REACH OUT TO A BOARD MEMBER.

For the POA to best serve the community and properly maintain our amenities, we need to receive payment of your POA dues promptly. Please be aware that non-payment of dues severely impacts our community, as we cannot maintain the common areas, clubhouses, parks, pool and tennis court without your dues. Non-payment of dues will also restrict your use of community amenities. As such, please ensure you pay your POA dues as soon as you receive your invoice. If for any reason you do not receive your notice, contact Sterling ASI as soon as possible at (832) 678-4500. Anyone at Sterling will be more than happy to assist you. See box on the bottom of this page for more helpful details.

WBPOA MANAGEMENT COMPANY

Ry Reid, PCAM, AMS, CMCA
Sterling Association Services
11201 Lake Woodbridge Drive
Sugar Land, TX 77498
Phone 832-678-5384
or 832-678-5390
Fax: 281-598-4487
Email: ry@sterlingasi.com

For your vacation planning needs, please be sure to register for a deputy vacation watch by visiting the Precinct 7 website and select "Vacation Watch" – or visit
<https://constable7.harriscountytexas.gov/Pages/VacationWatchRequest.aspx>

Ludington Clubhouse Rental

Joy Cunningham 713 / 417-8154
Joycunningham@sbcglobal.net

Braesridge Clubhouse Rental

Jeannette Calhoun 713 / 203-2407
jcalhoun@insurepointe.com

POA DUES – ADDITIONAL INFORMATION

Payment coupons are included with the invoice for your POA dues to be paid in advance. **Those coupons are not an agreement to enter into a payment plan, but there is a payment plan option.** However, you **MUST** notify the management company that you are selecting this option before January 2017 by sending in your first payment by the date specified on the coupon. **If for any reason you cannot make payments by end of January 2017 please contact Sterling or your POA Board AS SOON AS POSSIBLE, as it is imperative that the HOA receives payments so as to stay in line with the 2017 Budget.** Should you lose the payment coupon, you are welcome to mail your payment to the following:

West Bellfort POA
c/o Sterling ASI
PO Box 38118
Houston, Texas 77238-8118

Please specify the property address you are making payment for in the memo line of the check; alternatively, you are welcome to include a separate piece of paper with the address and any other particulars to ensure your payment is properly applied.

WBPOA is patrolled by :

Harris County Constable Precinct 7
Constable May Walker
Precinct 7 Dispatch 713 / 643-6602

Deputies assigned to WBPOA:

Sgt. J. Meeks
Deputy Antone
Deputy Nowlin
Deputy Simon

Please contact your alarm company and have the Constable's precinct listed as the first police authority contact.

We tend to forget that happiness doesn't come as a result of getting something we don't have, but rather of recognizing and appreciating what we do have.



Volunteers Needed to Serve as Block Captains



Block Captains are residents who volunteer their time and efforts to The community to serve as “point persons” between the residents, the POA Board, its committees and The property management team. Some of the responsibilities of a Block Captain could include the following:

- Get to know your neighbors, at least by sight, so you will know when someone is around who doesn't belong
- Encourage your block neighbors to keep an eye out for each other (for safety, emergencies, welfare checks, etc.)
- Encourage National Night Out meetings for your block
- Welcome new neighbors on your block and ensure they know about amenities, POA regulations, etc.
- Help keep neighbors informed of emergency situations such as hurricanes, etc.
- Assist the POA Board by notifying them of issues on the block (any suspicious activities, code violations, etc.). You will NOT be asked to handle these issues directly
- Make sure all neighbors receive the neighborhood newsletter or other informational flyers
- Assist the POA Board by obtaining signatures on proxies, if ever required
- Attend POA Board meetings (your option) to help keep your neighbors informed

You will not be asked to do anything that puts yourself in harm's way. The time involved is minimal. By serving as the “eyes and ears” of The community, you will play a big part in keeping it safe, friendly and beautiful. You can even “co-share” and team up with a neighbor. If you have an interest in serving as a Block Captain, please contact any of the Board members or Ry Reid, or attend the upcoming WBPOA Board Meeting on Tuesday, February 28, 2017, at 6:30pm, Braesridge Clubhouse.

POA Rules Regarding Garbage / Recycling / Yard Waste / Junk & Tree Waste

PLEASE SEE THE CITY OF HOUSTON' S ARTICLE “TRASH FACTS” ATTACHED TO THE BACK OF THIS NEWSLETTER

Garbage Bins: Weekly pick up. To be placed at the curb the night before scheduled pick up date (ie, Wednesday before a Thursday pickup)

Recycle Bins: Bi-weekly pick up. To be placed at the curb the night before pick up date (See Schedule A attached)

Yard Waste (grass and flower bed clippings, etc.): Weekly pick up with regular household trash, but must be in City approved clear plastic compostable bags with a city seal on the bag (found at hardware stores and most grocery stores)

Junk Waste & Tree Waste (tree trimmings, large limbs, etc.): Alternate Monthly pick up. Can be placed at the curb up to 4 days prior to scheduled pick up date. Pick up dates for Junk Waste and Tree Waste alternate months (Junk Waste – even months / Tree Waste – odd months).

If for any reason a household has too much trash to fit inside the black garbage bin, residents can purchase city stickers to place on the outside of large plastic garbage bags. The stickers can be purchased from Fiesta or Seller's Brothers customer service windows. The stickers **MUST** be visible street side, or the bags will not be picked up.

Residents with physical limitations can contact 311 and complete a Solid Waste Pickup Request Form (for either regular trash or recycles, or both) to qualify for special pick up services. If qualified, city services will then pick up from the residents' specified locations and return them to the same location when emptied. The location **MUST** be out of sight from the street, but accessible to the city services (ie, behind unlocked fence gate).

All bins, yard waste, junk waste and / or tree waste **MUST** be removed from sight by the end of the scheduled pick up date. **ALL BINS MUST BE KEPT OUT OF SIGHT AT ALL TIMES OUTSIDE OF TRASH PICK UP DAYS – NO EXCEPTIONS.**

Spread love everywhere you go. Let no one ever come to you without them leaving happier. ~ Mother Teresa



The Community

Community School

The other day, the editor of this newsletter watched horrified as a “mommy mobile” flew down Braesridge from Ludington; the driver slowed down for the stop sign at Teal Run, but did not actually stop (when “slowed”, she dropped her speed from about 40 to maybe 30). She then drove up behind a family riding bikes to school, and literally sat on the “bumper” of one of the children’s bikes until just after Quail Meadow, when the child was finally able to cross the street (cars were coming from the other direction). The mother then whipped into the Sephardic Gan/Torat EMET School to drop off her own children. The editor was not able to get the license tag of the car, but was absolutely horrified and astounded that a mother with children in her own car could treat a family on bikes in complete disregard of their personal safety. Not only was she driving at a high rate of speed, running a stop sign, putting the family at risk, she also put her own family at risk. On top of all that, the driver obviously knows the family she almost hit and apparently could not care less as she did not stop her behavior in the slightest. The really sad thing?? Her careless and reckless behavior is pretty common during the mornings as drivers tear down Braesridge with no care of the families walking to school. I simply cannot understand ANYTHING that is so important that people who live in our community would drive in complete disregard of their own safety, that of their own children and that of their neighbors. On behalf of all of our community’s families, please SLOW DOWN in the neighborhood in general, but most specifically during school hours around the school!

Community Clubhouses

With the recent updates to the Ludington Clubhouse, we now have two beautiful places available to host your events at our two clubhouses! Be sure to get with Joy Cunningham for the newly renovated Ludington Clubhouse or Jeanette Calhoun for the Braesridge Clubhouse. Their contact details are on the front of the newsletter.

Community Parks

Since our “winter” does not seem to be happening, you can still enjoy our two community parks with your families.

You can also grab a few rackets and some friends and enjoy the warm weather on our community tennis court!!

Ludington Pool

The pool season has wrapped up for the year, and the pool is now closed. But no worries! It will open again Memorial Weekend in May 2017!

POA Rules Regarding Home Improvements

Reminder that before doing any landscaping or home improvement project involving the exterior of your home (including the front AND back yards), such as painting, the construction of patio covers, pools, etc., you **MUST** obtain approval first from the Architectural Control / Review Committee by completing the Architectural Control Application. The application can be found on the WBPOA website, and a copy is attached to this newsletter. Failure to receive approval for the improvement and / or change may result in you having to remove, alter or change the improvement in order to comply with the rules and regulations of the POA. . **PLEASE NOTE: This also includes obtaining approval for any dumpsters that may be required during improvements / renovations, no matter the size or location. Failure to obtain prior approval may result in the requirement to remove the dumpster from the site.**

See Something, Say Something!

YOUR EYES ARE ONE OF THE BEST CRIME PREVENTION TOOLS OUT THERE!! Please keep alert at ALL times, enter the Precinct 7 Constable’s Dispatch number in your phones and be sure to have the Constable Dispatch the first law enforcement contact for your home alarms. As always, if you see something suspicious, be sure to report it immediately – our patrol officers are quick to respond and will address issues ASAP. If you plan a trip to visit family, please get registered with Precinct 7 for a vacation watch – our patrol officers will help keep an eye on your home.

GETTING AROUND TOWN DURING SUPER BOWL LI AND RELATED EVENTS

Houstonians are very welcoming people and we are always happy to have visitors to our fabulous city. But while we are very excited about hosting Super Bowl 51, we all know how an event this large can make our already crazy traffic even more of a headache. The Big Game is set for Sunday, February 5th, but there are many other events scheduled for the week before. As such, parking and transportation during the events surrounding the Super Bowl will be confusing, especially since there will be road closures going on from January 19th through the day after Game Day. You can get more information about the game, the calendar of events, parking, shuttles, Uber / taxi stands, etc. – all you could possibly need to know about Super Bowl 51 – by visiting www.housuperbowl.com.

In the meantime, here are a few excerpts from the website in an effort to help you get around during the events. **Related maps can also be found at the back of this newsletter:**

ROAD CLOSURES:

Whether you're going to Super Bowl LIVE, NFL Experience or any event downtown, keep in mind that partial closures will begin on January 19th with full closures from January 19th through February 6th on the following streets:

Polk Street (Between Austin and LaBranch)

Dallas Street (Between Austin and LaBranch)

LaBranch Street (Between Walker and Bell)

Surrounding Discovery Green:

Avenida De Las Americas

McKinney Street

Lamar Street

PARKING:

Downtown Houston has more than 62,000 spots for Super Bowl-related events. We encourage fans to park on the west side of downtown to ride the Special Event Circulators to their destination. Certain lots may not be utilized in their normal capacity; therefore, we recommend planning ahead when deciding where to park. If you're coming downtown during business hours (Monday-Friday), there will still be 12,000+ designated fan parking spots during that time.

However, you are strongly encouraged to secure your parking in advance. Guarantee your spot in and around downtown Houston for all events by scrolling up to [Downtown Event Parking](#) or through the Fan Mobile Pass App. You can purchase parking ahead of time by downloading the PRE-PAID PARKING APP through the Host Committee website and the Fan Mobile Pass app. Guests at any event in downtown Houston will be able to pre-purchase their parking spot at a guaranteed rate. The parking pass can be printed or scanned through the app providing turn by turn directions to the lots, giving peace of mind when navigating through Super Bowl events.

METERS:

Parking in downtown Houston is easy and convenient. There are more than 1,000 street parking spaces available in three hour increments. There are three different ways to pay at the pay station:

Pay-by-Plate: Enter your license plate number to pay

Pay-by-Phone: Download the app [PayByPhone](#) or dial a toll-free number (877) 727-5953

Pay-and-Display: Pay meter & display the receipt on your dashboard

TIME MANAGEMENT:

We welcome you, your family & friends to join the fun with over 100,000 people per day across all Super Bowl events. Please allow extra time when traveling downtown due to event-specific road closures and detours.

CONNECTING COMMUNITIES:

Public transportation is recommended to access downtown Houston for Super Bowl related events. Through our partnership with METRO we have worked on extended event schedules, increased frequency, and additional circulators and shuttles.

UBER AND TAXIS:

Uber and Taxis are an easy way to get an affordable, safe, and reliable rides to and from your favorite event. You can request a ride through your smartphone on the Houston Super Bowl Host Committee app or by visiting the Welcome Center loading locations. Special event regulations, rates, and surcharges may apply.

Do not underestimate yourself by comparing yourself with others. It is our differences that make us unique and beautiful.

A MARDI GRAS TRADITION EXPLAINED: THE KING CAKE

Most of us know fruit cakes, the infamous and much maligned cake of the Christmas season. However, a lot of people are unaware of the second most popular cake of the holiday season, the “King Cake”. You will not hear jokes about King Cakes “surviving” uneaten for years, because they are usually devoured quickly and eagerly! The King Cake takes its name from the biblical Magi kings and is associated with the Mardi Gras (Carnival) season, which officially begins on January 6th, also known as the Twelfth Night (the last of the 12 days of Christmas), or “Epiphany”. Epiphany comes from the Greek word “epiphainein” which means “to reveal”, and celebrates the day when the Christ Child was revealed to the Magi upon their arrival in Bethlehem. The season for the King Cake extends from the Twelfth Night to the end of Shrovetide, otherwise known as Mardi Gras (“Fat Tuesday” or “Shrove Tuesday”), the day before Ash Wednesday, the start of Lent. King Cakes are very popular during the Christmas season in many European and Latin American countries, where Mardi Gras is popular (especially in Venice and Brazil, the top places for Carnival). In the US, Carnival is traditionally observed along the Gulf Coast, primarily in New Orleans and Galveston. The festivities of Mardi Gras are believed to have been brought to New Orleans by French-Canadian explorer Pierre Le Moyne d’Iberville in 1699, when he set up camp along the Mississippi River just south of present day New Orleans. It just so happened the next day was Mardi Gras, and so began its celebration. The tradition of the King Cake followed from France almost two centuries later in 1870. A King Cake is a tasty cross between a coffee cake and a French pastry that is as rich in history as it is in flavor. It can be coffee cake in style or filled with cream and / or fruits. Everything about it is symbolic of the Holiday Day of Epiphany. Its round shape is symbolic of the circuitous route the Magi took to confuse King Herod and his armies, who were trying to follow the Magi. The three braids are symbolic of the three kings. It is iced and decorated with everything from fruits to sugar, always colorful, to represent the jewels in the Three Kings’ crowns. In the Southern US, the cake is iced and decorated in sugars of the official Mardi Gras colors created in 1872 by the Krewe of Rex: purple (for Justice), green (Faith) and gold (Power). The most important part of the King Cake is the hidden surprise: in honor of the Christ Child, coins, beans, peas or pecans were traditionally hidden inside the cake. Since the late 1800’s, a tiny baby has been placed inside each King Cake. When the King Cake is sliced and served, the person who finds the hidden prize is named “king of the feast” or “king for the day” and is said will have good luck and prosperity during the year. This same person is then bound by custom to host the next party and provide the King Cake the following year. In older times, the cake was divided into as many shares as there were guests, plus one. The latter, called “the share of God,” “share of the Virgin Mary,” or “share of the poor” was intended for the first poor person to arrive at the home, again in honor of the poor Christ Child. King Cakes must be eaten prior to Lent, as it is considered too luxurious a treat to be consumed during the Lenten Season.

KING CAKE RECIPE

For the cake:

1 cup lukewarm milk, about 110°F	5 egg yolks, beaten
1/2 cup granulated sugar	1 teaspoon vanilla extract
2 tablespoons dry yeast	1 teaspoon grated fresh lemon zest
3 and 3/4 cups all-purpose flour	3 teaspoons cinnamon
1 cup melted butter	Pinch of nutmeg

For the icing:

2 cups powdered sugar
1/4 cup condensed milk
1 teaspoon fresh lemon juice
Purple, green, and gold decorative sugars
1 fava bean or plastic baby to hide in the cake

Cake:

Pour the warm milk into a large bowl. Whisk in the granulated sugar, yeast, and a heaping tablespoon of the flour, mixing until both the sugar and the yeast have dissolved. Once bubbles have developed on the surface of the milk and it begins to foam, whisk in the butter, eggs, vanilla and lemon zest. Add the remaining flour, cinnamon and nutmeg and fold the dry ingredients into the wet ingredients with a large rubber spatula. When the dough begins to pull away from the sides of the bowl (or “comes together”), shape it into a large ball. Knead the dough on a floured surface until it is smooth and elastic, about 15 minutes. Put the dough back into the bowl, cover with plastic wrap, and set aside in a draft-free place to let it proof, or rise, for 1-1/2 hours or until the dough has doubled in size. Once the dough has risen, punch it down and divide the dough into 3 equal pieces. Roll each piece of dough between your palms into a long strip, making 3 ropes of equal length. Braid the 3 ropes around one another and then form the braided loaf into a circle, pinching ends together to seal. Gently lay the braided dough on a nonstick cookie sheet and let it rise until it doubles in size, about 30 minutes. Preheat oven to 375 degrees. Randomly poke the baby in, or slide it under, the dough. Place the cookie sheet in the oven and bake until the braid is golden brown, about 30 minutes. Remove the cake from the oven, place on a wire rack, and allow to cool.

Icing:

Whisk together the powdered sugar, condensed milk and lemon juice in a bowl until the icing is smooth and spreadable. If the icing is too thick, add a bit more condensed milk; if too loose, add a little more powdered sugar. Once the cake has completely cooled, spread the icing over the top of the cake. While the icing is still wet, sprinkle with purple, green, and gold decorative sugars. Using a large spatula, slide the cake onto a serving platter. ENJOY!





March 7 – 26, 2017
NRG Stadium and Park

In 1931, the Houston Fat Stock Show and Livestock Exposition was established and the first show took place in Houston's old Democratic Convention Hall. After the hall was demolished, the show moved in 1938 to the Sam Houston Coliseum. This new home allowed the event to hold their first ever rodeo in conjunction with the show. This was also the first year that the event held a horse show and a parade. Since its humble beginnings, the Houston Livestock Show and Rodeo has grown to become one of the largest live entertainment and livestock exhibitions in the world. The Rodeo harkens back to the real roots of Houston and its beloved state, and is steeped in rich tradition. Since 1932, the Rodeo has become one of the richest regular-season rodeo events in the world – and one of the most philanthropic. The Rodeo is in fact a Section 501(c)(3) charitable organization dedicated to benefiting youth, supporting education, and facilitating better agricultural practices through exhibitions and presentation. In its 85-year history, Rodeo has committed more than \$430MM to scholarships, research, endowments, calf scramble participants, junior show exhibitors, school art participants, and other educational youth programs. Previously held at the Astrodome, the event now takes place at NRG Stadium. It is considered Houston's "signature event", much like New Orleans's Mardi Gras and Dallas's Texas State Fair. The 20-day long event is kicked off by the Rodeo Roundup held near City Hall, the Rodeo parade, the World's Championship Bar-B-Que Contest and the ConocoPhillips Rodeo Run. The show features championship rodeo action, livestock competitions, concerts, a carnival, pig racing, barbecue, wine competition, shopping, sales and livestock auctions. Houston celebrates this event with Go Texan Day, where residents are encouraged to dress in western wear the Friday before the rodeo begins. Another favorite part of the Rodeo are the historic trail rides, which began simply in 1952, when four men traveled on horseback from Brenham, Texas, to raise awareness of the Rodeo. The popularity of the trail rides caught on quickly, as one year later, 80 people started up the Salt Grass Trail Ride, and by 1954, 800 people were participating in trail rides. Today, 13 total trail rides with more than 3,000 riders hit the trail to partake in the tradition. The riders saddle up from all directions, including from Louisiana and Mexico and cover nearly 1,800 miles in total. The longest trail ride is the 386-mile Los Vaqueros Trail, which begins in Reynosa, Mexico, and the shortest is the 70-mile Texas Cattlemen's Trail Ride, which starts in Montgomery, Texas, just north of Houston. All trail rides are led by Trail Bosses, who are responsible for ensuring the safety of his trail riders as well as the coordination of the ride. Trail bosses are highly revered by their riders. Many of the trail riders are family members who have participated for generations. Some trail rides distribute scholarships to area students and visit schools to share the history of the Show and trail rides. Many of the horses on the ride are rescued animals. The Texas Independence Trail Ride has such animals, as well as three century old wagons. Please be sure to enjoy the 2017 Houston Live Stock Show and Rodeo, which will be held from March 7th through 26th. The entertainers at this year's Rodeo are listed at the back of this newsletter, and you can visit <http://www.rodeohouston.com> for more information about this much loved event, as well as how to purchase tickets for the concerts and / or the carnival as well as shuttle information and more. Go Houston! Go Rodeo!

MORE EFFICIENCY NOW AVAILABLE FOR AIR TRAVELERS AT BUSH & HOBBY

In an effort to make air travel more efficient, the Houston Airport System is now offering near real-time data on its website for all eight security locations found at George Bush Intercontinental and William P. Hobby Airports. The fly2houston.com website previously lacked data from terminals B, C, D and E at Bush Airport, but now the site not only features information from all terminal facilities but also relaying data from a much more precise digital collection system. More and more, air travelers can go online from just about anywhere to get tickets, check in, see the status of their flight, find a spot to park, and even a place to eat when they get to the airport. That wealth of information affords them unprecedented control over their trips, giving them real-time updates that allow them to make plans accordingly. A big part of that is planning for the time it will take to get through the TSA security checkpoints at airports. Now, with new technology in place, travelers can get updates on the average time it will take to clear security before heading to their departure gate. The improved system has antennae in place that identifies signals from Bluetooth discoverable devices and follows those through entry and exit points at security checkpoints. The tracking is anonymous and uses a variety of filters to ensure both anonymity and accuracy, and then uses that data to provide an average time for travelers passing through the checkpoints. The updates were in place in Terminal A at George Bush Intercontinental Airport and at William P. Hobby Airport earlier in 2016, and the rest of the checkpoints at Bush Airport came online in time for the 2016 Christmas holiday travel season. Now, travelers can go to fly2houston.com and click on the "depart" tab to access the near real-time updates on clearance times at all checkpoints at Bush and Hobby Airports. For information at Bush, check <http://www.fly2houston.com/iah/depart>. For information at Hobby, check <http://www.fly2houston.com/hou/depart>. As well as the TSA checkpoint updates, on the fly2houston.com website, travelers can find information regarding parking spaces at the airports as well as information about getting around the airports, shopping and dining options and more. Since the Houston Airport System's facilities have some of the fastest free WiFi of any airport in the country, all of those tools are easily accessible to travelers once they get to the airport.

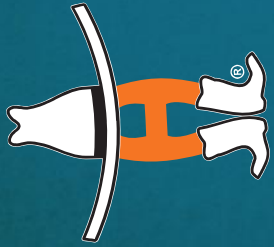
LOVE 2017 FEBRUARY LOVE

SUNDAY	MONDAY	TUESDAY	WEDNESDAY	THURSDAY	FRIDAY	SATURDAY
Want to be an active member of your community? Come to a Board meeting, contact one of your POA Board Members or Ry Reid to find how you can serve on one of the Board committees or serve as a Block Captain!			1	2 Groundhog Day Recycle Pick Up	3	4
5 Super Bowl 51	6	7	8	9	10 Junk Waste North Side*	11
12	13	14 Valentine's Day	15	16 Junk Waste – South Side* Recycle Pick Up	17	18
19	20 President's Day	21	22	23	24	25
26	27	28 POA Board Meeting Mardi Gras!! 6:30pm Braesridge Clubhouse		Junk Waste EVEN months February April June August October December	Tree Waste ODD months January March May July September November	

* WBPOA – Northfield III and IV (North Side of West Bellfort): Junk Waste 2nd Friday of even months / Tree Waste 2nd Friday of odd months
 * WBPOA – Northfield V (South Side of West Bellfort): Junk Waste 3rd Thursday of even months / Tree Waste 3rd Thursday of odd months

FUN KITCHEN TIPS!

- Test egg freshness: Fill a glass with water and put in the egg. Fresh eggs will not float. The higher the float, the less fresh the egg. Eggs that have gone bad will float to the top and should not be used.
- Extend veggie freshness: Line your fridge bins with paper towels to absorb excess moisture then load up the veggies.
- Resparkle day-old flat champagne: Drop in a raisin or two.... After a few minutes, the sugars will revive the sparkle.
- Champagne older than a day? NO WORRIES! Flat champagne is great in many recipes!! You can google for recipes (or check next month's newsletter!)
- Keep it shaking: Put a few raw rice kernels in your salt shakers to keep it flowing
- Store dairy products such as sour cream, yogurt and cottage cheese upside down in their tubs in your fridge. Creates a vacuum to prevent bacteria growth.
- Honey is the ONLY food that is not perishable – ever. If it crystalizes, simply place in a container of hot water up to the sealed lid. You may need to replace the hot water a few times depending on how crystalized the honey became.
- Store brown sugar in the freezer to keep it from hardening..
- Soup too salty? Add chunks of potato or apple to the soup, simmer 10 to 15 minutes and remove the potato / apple. Still too salty? Try adding some sugar or a dash of apple cider vinegar (not too much). Final trick: add low sodium broth.
- Speaking of soup – is it a little too fatty? Best is to let it cool in the fridge and literally lift off the fat. But if you are in a hurry...toss in large lettuce leaves and discard when limp – they will take most of the fat with them.
- Native Texans know this already, but.... Have a tough piece of meat? Soften it by marinating in beer or citrus (so now you know why limes are used as marinades on fajitas). You can also use papaya, pineapple or fresh tomatoes.



HOUSTON LIVESTOCK SHOW AND RODEO™

March 7-26, 2017 • rodeohouston.com • #RODEOHOUSTON

SUNDAY



12 THE CHAINSMOKERS



19 BANDA EL RECODO AND SIGGNO
Go Tejano Day



26 ZAC BROWN BAND

MONDAY



13 SAM HUNT



20 FLORIDA GEORGIA LINE

TUESDAY



7 AARON WATSON
First Responders Day
presented by BP



14 MEGHAN TRAINOR

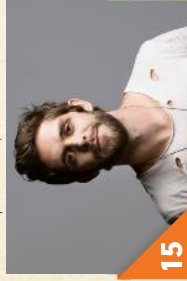


21 ZZ TOP

WEDNESDAY



8 OLD DOMINION
Armed Forces Appreciation Day
presented by BHP Billiton



15 THOMAS RHETT



22 CHRIS YOUNG

THURSDAY



9 CHRIS STAPLETON



16 LUKE BRYAN



23 BLINK-182

FRIDAY



10 ALICIA KEYS
Black Heritage Day
sponsored by Kroger



17 FIFTH HARMONY



24 DIERKS BENTLEY

SATURDAY



11 ALAN JACKSON



18 WILLIE NELSON



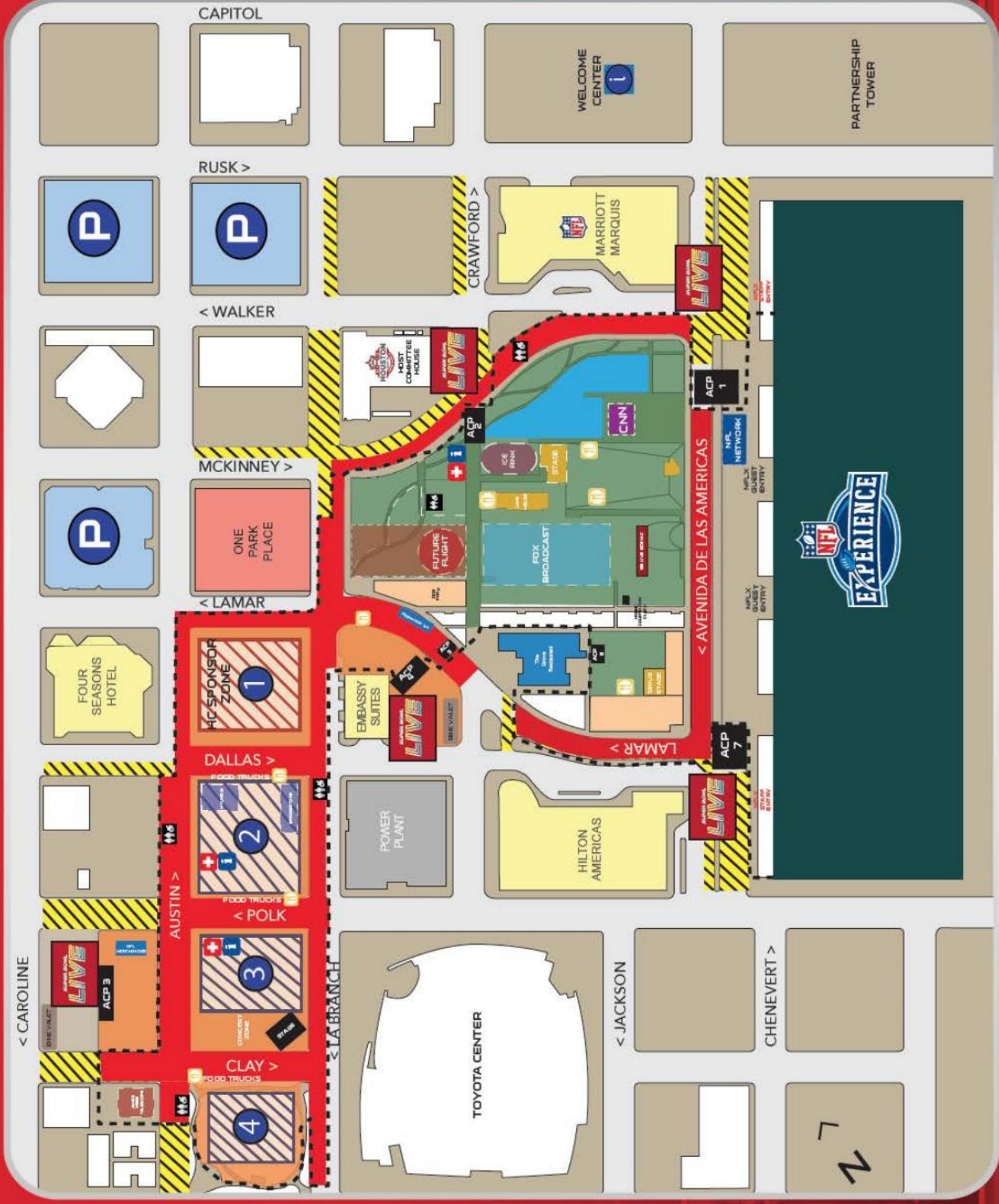
25 BRAD PAISLEY

2017

BUY TICKETS AT RODEOHOUSTON.COM

Weekday Performances 6:45 p.m. • Weekend Performances 3:45 p.m.

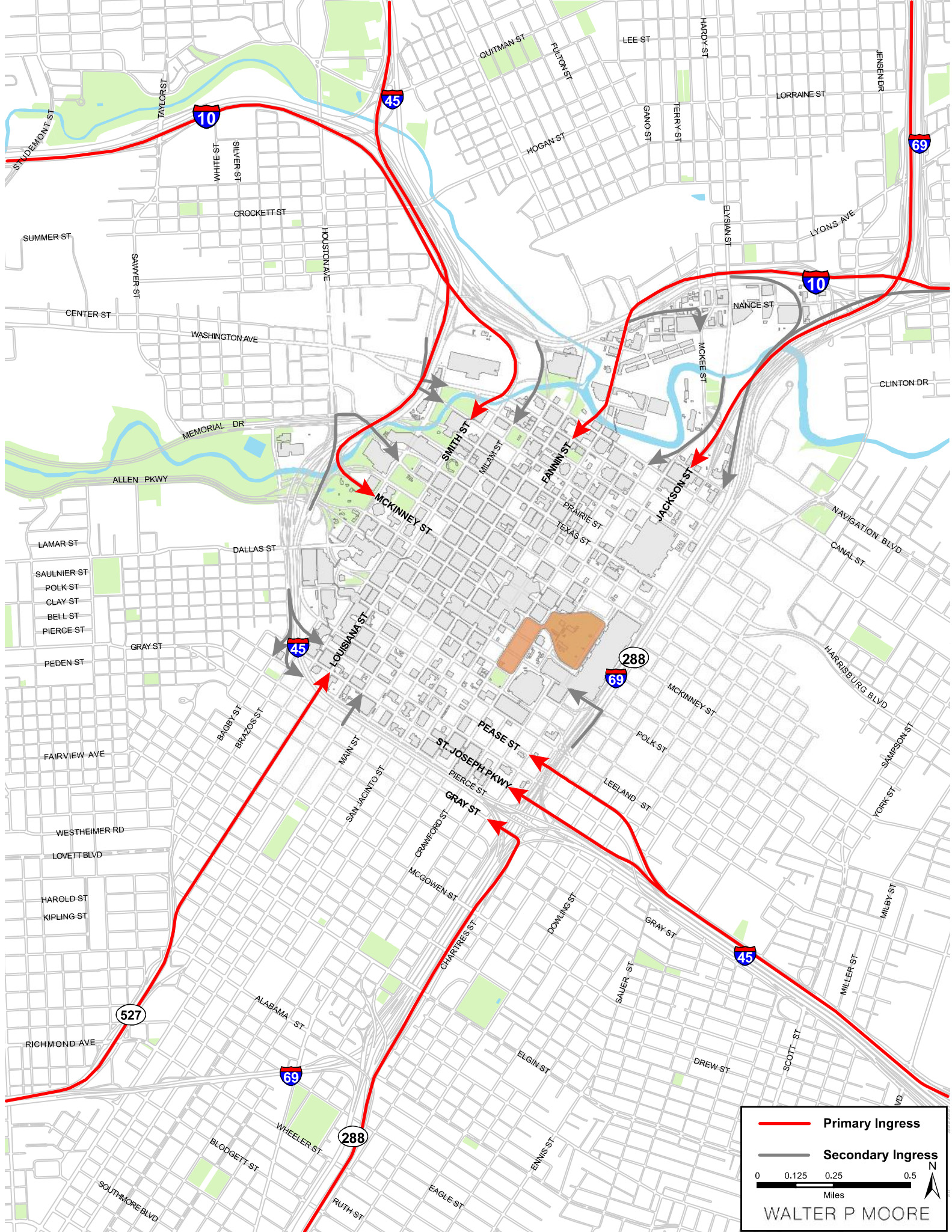
Value Wednesdays include \$10 upper level Rodeo tickets, plus values throughout NRG Park.



LEGEND

- EVENT PARKING
- PERIMETER FENCE
- STREET CLOSURE (Interior)
- STREET CLOSURE (Exterior)
- CONCESSIONS
- RESTROOMS
- VIP/STAFF ENTRY/EXIT
- GUEST ENTRY/EXIT
- NFL PARTNERS
- HOST COMMITTEE SPONSORS
- PARKING LOT NUMBER

DOWNTOWN HOUSTON
FRI. JAN. 27 - SUN. FEB. 5, 2017



Primary Ingress

Secondary Ingress

0 0.125 0.25 0.5
Miles

WALTER P MOORE

SUPER BOWL LI TRANSPORTATION MAP



MAP KEY

	Warehouse District		Avenida Houston
	Ballpark District		Public Parking Garages
	Historic District		Houston B-cycle
	Theater District		UBER Stands
	Shopping District		Taxi Stands
			Bike Valet by Bike Houston

		SUPER BOWL LIVE Entrance
		SUPER BOWL LIVE Footprint
		Street Closure

GREENLINK FREE DOWNTOWN CIRCULATOR

	Green Route	Orange & Silver Routes
Sat, Jan 28	9 am-midnight	9 am-midnight
Sun, Jan 29	9 am-11 pm	9 am-11 pm
Mon, Jan 30	6:30 am-midnight	1 pm-midnight
Tues, Jan 31	6:30 am-midnight	1 pm-midnight
Wed, Feb 1	6:30 am-midnight	1 pm-midnight
Thurs, Feb 2	6:30 am-1 am	1 pm-1 am
Fri, Feb 3	6:30 am-1 am	1 pm-1 am
Sat, Feb 4	9 am-1 am	9 am-1 am
Sun, Feb 5	9 am-3 pm	9 am-3 pm

METRO

	Galleria Shuttle		Rail Lines
Wed, Feb 1	1 pm-midnight		North/Main
Thurs, Feb 2	1 pm-1 am		Southeast
Fri, Feb 3	1 pm-1 am		East End
Sat, Feb 4	9 am-1 am		
Sun, Feb 5	9 am-3 pm		

ATTRACTIONS & PARKS

- | | |
|---|--|
| 1. Bayou Place | 6. Market Square Park |
| 2. Downtown Aquarium | 7. Sabine Promenade & Buffalo Bayou Park |
| 3. George H.W. Bush & James A. Baker, III Monuments | 8. Sam Houston Park |
| 4. Allen's Landing | 9. Sesquicentennial Park |
| 5. Hermann Square | 10. Tranquility Park |

ENTERTAINMENT

- | | |
|--------------------|----------------------------|
| 11. Alley Theatre | 15. Sundance Cinemas |
| 12. Hobby Center | 16. Revention Music Center |
| 13. Jones Hall | |
| 14. Wortham Center | |

HOTELS

- | | |
|--|-----------------------------|
| 17. Aloft | 26. Hilton Americas |
| 18. The Sam Houston Hotel | 27. Holiday Inn |
| 19. Club Quarters | 28. Holiday Inn Express |
| 20. Courtyard by Marriott/Marriott Residence Inn/SpringHill Suites | 29. Hotel Icon |
| 21. The Whitehall | 30. Hyatt Regency Downtown |
| 22. DoubleTree | 31. JW Marriott |
| 23. Four Seasons | 32. Marriott Marquis |
| 24. Embassy Suites | 33. Westin Houston Downtown |
| 25. Hampton Inn/Homewood Suites | 34. Lancaster Hotel |
| | 35. Magnolia Hotel |
| | 36. Athens Hotel Suites |

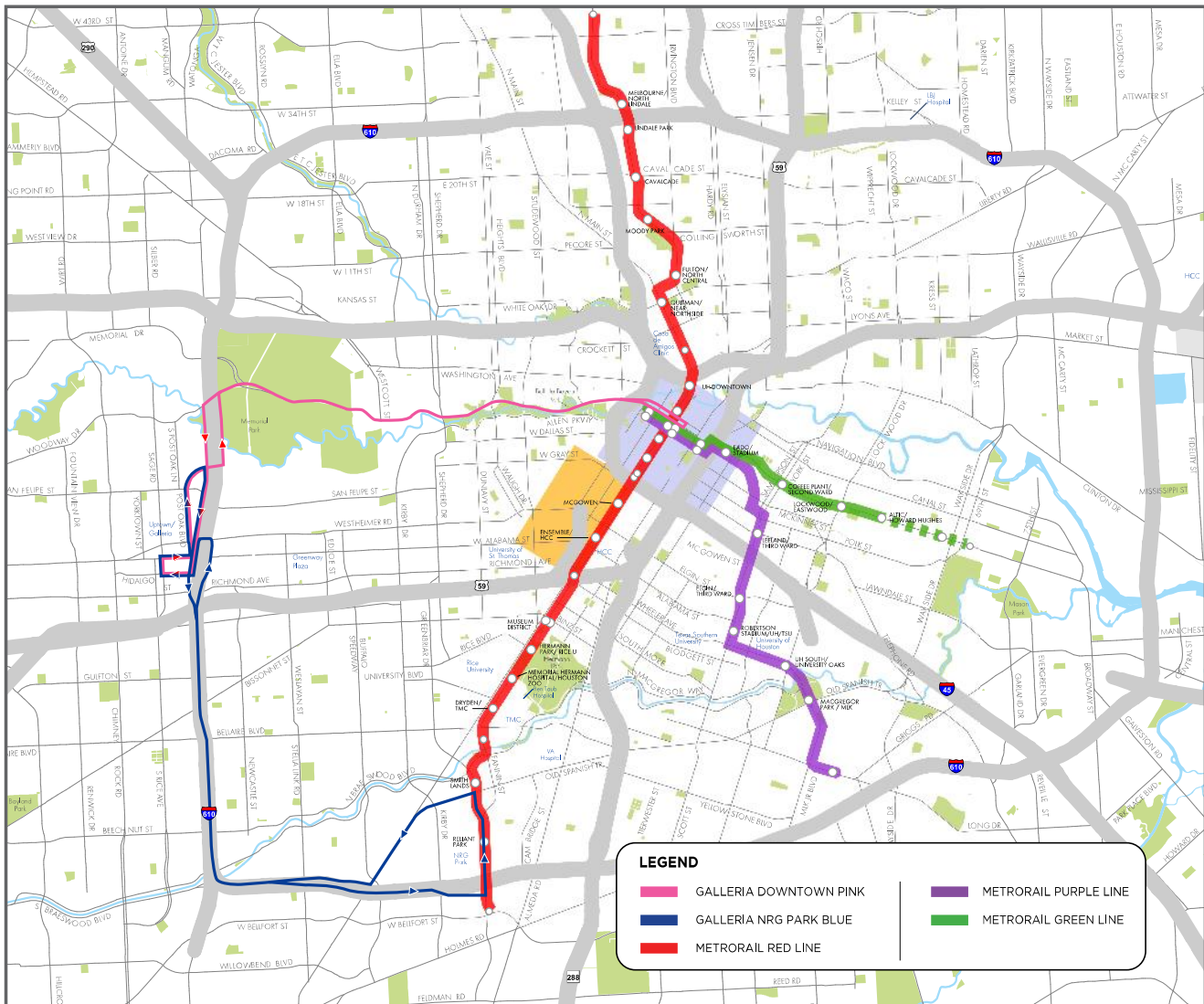


I-69

METRO Super Bowl Connection

GALLERIA SHUTTLES

OVERVIEW



GALLERIA DOWNTOWN PINK - SERVICE BETWEEN TWO UPTOWN LOCATIONS (HILTON & GALLERIA MALL) AND DOWNTOWN.

- FEBRUARY 1ST THRU FEB 5TH (EVERY 15 MINUTES)

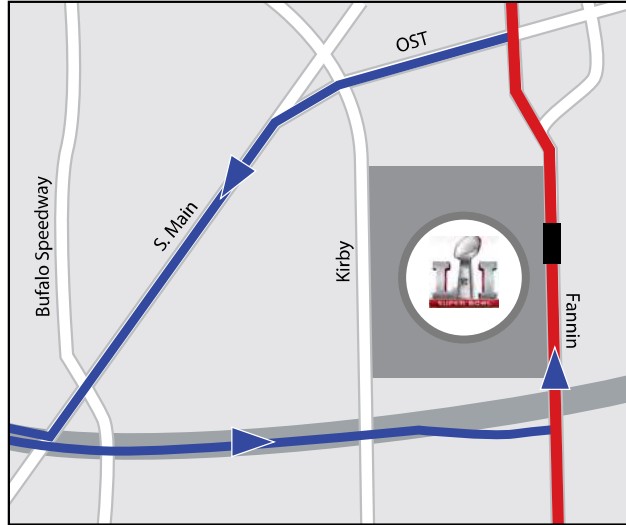
GALLERIA TO NRG PARK BLUE (FEBRUARY 5TH ONLY) - SERVICE BETWEEN TWO UPTOWN LOCATIONS (HILTON & GALLERIA MALL) AND NRG PARK

- SUNDAY, FEBRUARY 5TH 11AM - MIDNIGHT (EVERY 15 MINUTES)

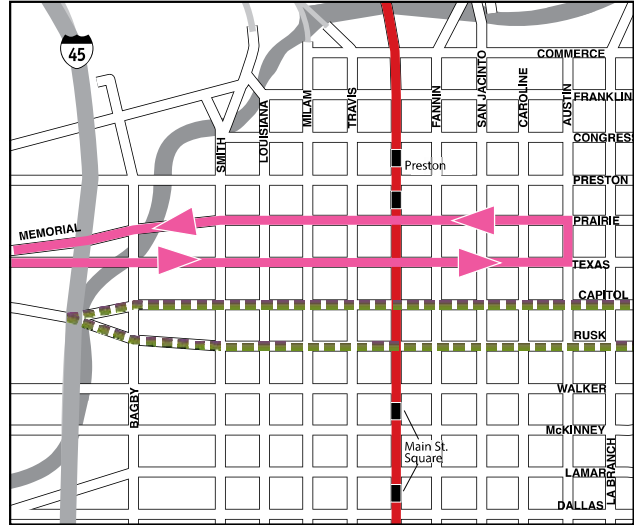
METRO Super Bowl Connection

GALLERIA SHUTTLES

NRG PARK - BLUE



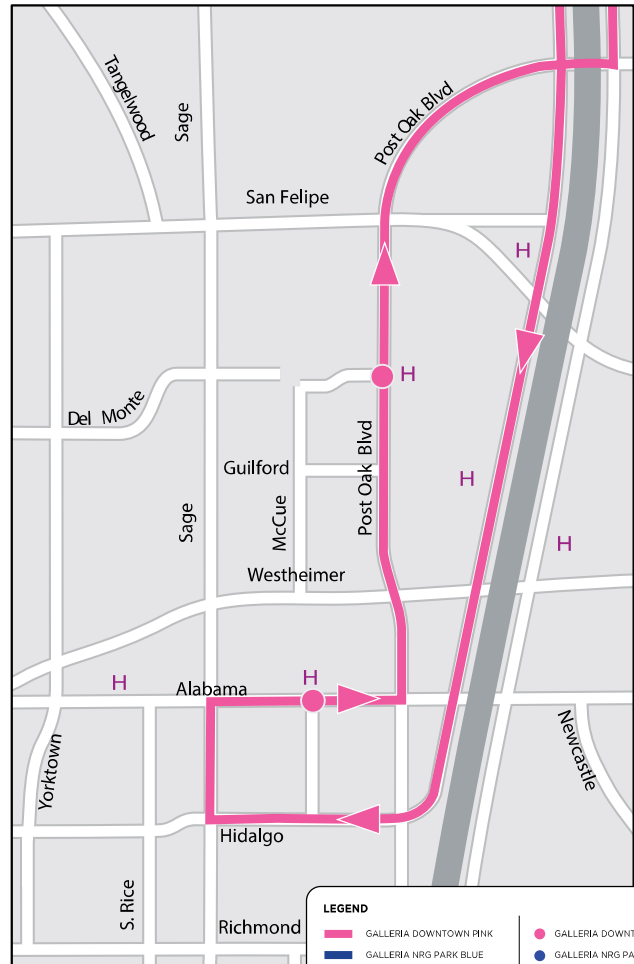
DOWNTOWN AREA - PINK



UPTOWN / GALLERIA AREA - BLUE



UPTOWN / GALLERIA AREA - PINK

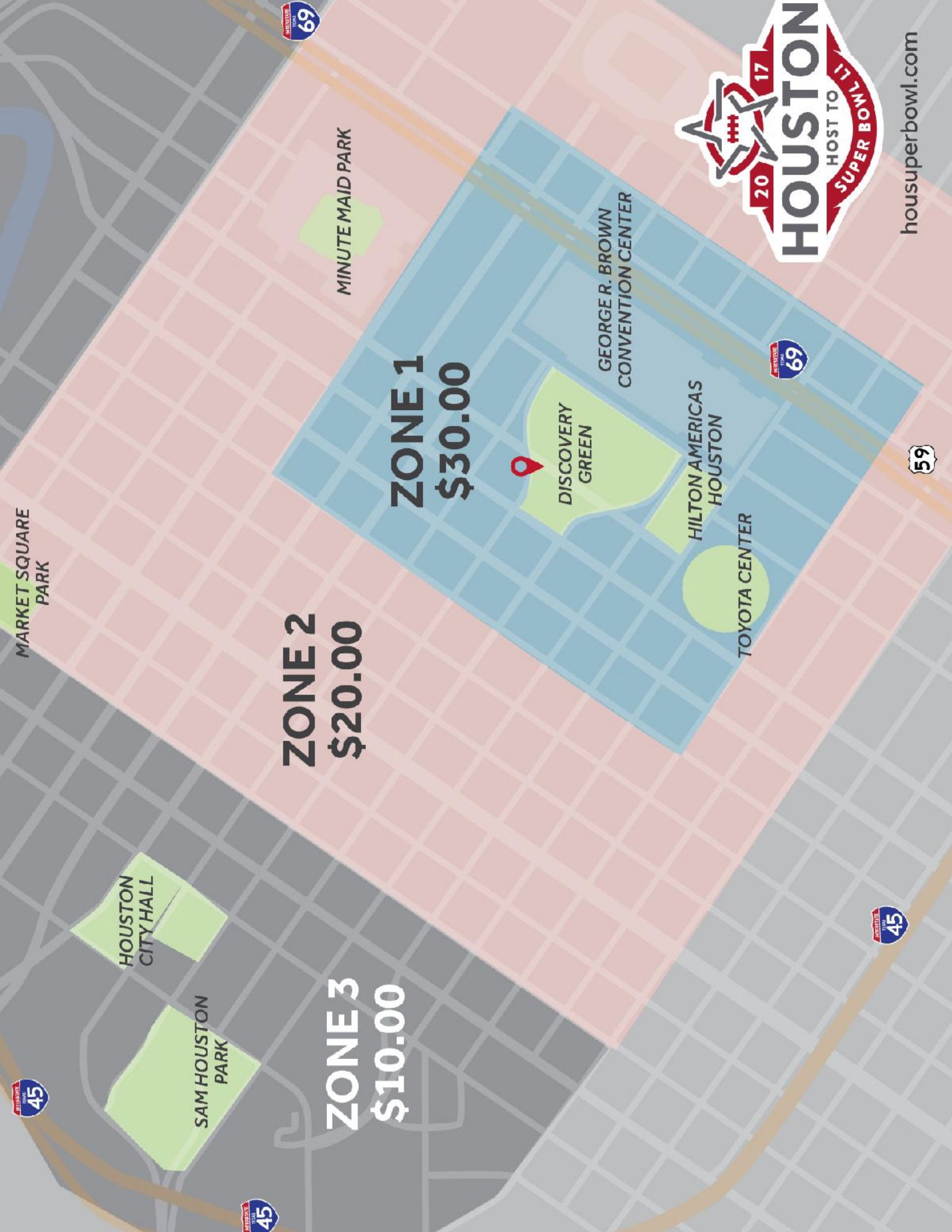


LEGEND

- GALLERIA DOWNTOWN PINK
- GALLERIA NRG PARK BLUE
- GALLERIA DOWNTOWN STOP
- GALLERIA NRG PARK STOP
- H HOTEL



housuperbowl.com



ZONE 1
\$30.00

ZONE 2
\$20.00

ZONE 3
\$10.00

MINUTE MAID PARK

GEORGE R. BROWN
CONVENTION CENTER

DISCOVERY
GREEN

HILTON AMERICAS
HOUSTON

TOYOTA CENTER

MARKET SQUARE
PARK

HOUSTON
CITY HALL

SAM HOUSTON
PARK





Sylvester Turner,
Mayor

the TRASH FACTS



Harry J. Hayes
Director

The Citizen's Guide to City of Houston Solid Waste Management Department Services

Residential Services: At Your Curbside



Garbage Collection

Household garbage must be put inside the city-provided container which should be placed at the curb between 6 p.m. the day before and 7 a.m. on the scheduled collection day. The container must be accessible to the automated collection truck and not blocked by obstacles, including parked cars. Drivers will not move improperly placed containers. Containers must be removed

from the curblines and/or public view by 10:00 p.m. on the day of collection and stored in a secure location. The garbage container is for disposing of regular household garbage only. Certain items should not be disposed of in your garbage container either because they are too heavy for SWMD equipment or because they may harm employees, property, neighbors, pets, and the environment. Therefore, do not put 1) household chemicals, 2) construction, demolition, and remodeling debris, 3) dead animals, 4) computer equipment, 5) recyclables or 6) yard trimmings in the container.



Yard Trimmings

Yard Trimmings, grass clippings, small branches and leaves must not be placed in the automated garbage cans. They must be in city-approved compostable bags not weighing more than 50 pounds, and placed at the curb 3 feet away from the automated container for separate yard trimmings

TO BAG... yard trimmings recycling
...OR NOT TO BAG!
 You have **CHOICES!**
 Find out how easy your choices are!
 Compostable Bags! Grasscycling! Composting!
 Visit www.houstonsolidwaste.org for details!

Working to make Houston a Cleaner, Greener Place to Live
 Visit www.houstonsolidwaste.org for details!

collection. Small branches may be put in bundles as long as each bundle is less than 4 feet in length and 18 inches in diameter and weighing less than 50 pounds. Yard Trimmings mixed with paper, plastic, or any other type of waste will not be collected. Work performed by a contractor must be removed by the contractor.

Adopt - A - Container Program

Non-profit organizations may request large bulk containers for weekend neighborhood cleanup campaigns. Requests must be sent to the SWMD in writing at least 14 days prior to the anticipated cleanup date. Bulk containers are provided on a "first come, first serve" basis and are delivered on Friday and collected on Monday. Only non-profit organizations and civic organizations coordinating a neighborhood cleanup campaign are eligible to sponsor bulk containers. For more information, call 3-1-1.

Dead Animals

Dead animals can be picked up by calling 311, the City's Customer Service Hotline. A fee is required for large dead animal pickup. For large animal pickup during the weekend, please call 311 from 7:00 a.m. to 3:00 p.m. Do not place dead animals with household garbage or tree waste / junk waste collection.

For dead animals on the freeway and feeder, call TXDOT at 713-802-5000.

Fines

Violation of any provision of the solid waste ordinance is punishable upon first conviction by a fine of no less than \$50 nor more than \$2,000. Each subsequent conviction is punishable by a fine of no less than \$250 nor more than \$2,000. Each day that any violation continues may be punishable as a separate offense. To report a violation or to file a complaint, call 311. SWMD Supervisors can write citations.

**...for more information,
visit our website at www.houstonsolidwaste.org or call 3-1-1**

~Printed on Recycled Paper~

IN THIS ISSUE
 TREE WASTE/ JUNK WASTE
 GO GREEN WITH SWMD!
 RECYCLING
 DEAD ANIMAL
 INFO

The TRASH FACTS

Tree Waste / Junk Waste Recycling Program

The City will collect tree waste exclusively on odd months on the resident's current tree waste /junk waste collection day. "Tree waste" is defined as "clean wood waste", which consists of tree limbs, branches or stumps. Lumber, furniture and treated wood will not be accepted. On even months residents may set out their junk waste at the curb for city collection. "Junk waste" is used to describe items such as furniture, appliances and other bulky materials. These items should be placed adjacent to the front curb in a location easily accessible to the collection vehicle between the hours of 6:00 p.m. the Friday before, and 7:00 a.m. on the scheduled collection day. No more than eight cubic yards per residence will be collected on the scheduled tree waste/junk waste collection day. *Of this amount, only a maximum of four cubic yards of building material (not to include roofing shingles, brick, plaster or concrete) generated by the resident in connection with the maintenance of the residential property may be collected by department personnel.* A maximum of four (4) tires per month, per household may be placed curbside for collection. Sheet rock must be bagged. Appliances containing refrigerant must have a tag attached to them certifying that a qualified technician has removed the refrigerant. Materials should not be stacked under low overhead cabling,



Tree Waste Recycling reduces loads headed to the landfill

signs, or mailboxes; next to fences or posts; or on top of water meters, gas meters, fire hydrants, or other exposed utility components. Also, materials should not be placed in the street, on the sidewalk, or other right-of-way, or in any manner that would interfere with pedestrian or vehicular traffic. Tree waste and junk waste collection is limited to residential units and vacant residential lots only if the waste generated is in connection with the maintenance of the property. The SWMD is not allowed to collect any material that was generated by contractors who were retained by a resident to perform work on his or her residential



property. It is the responsibility of the contractor to remove, or cause to be removed, all debris that may arise from the course of his or her activities. These contractor related activities include, but are not limited to, trimming and removal of trees, remodeling, new construction and roofing. If authorized items placed for collection are mixed with unauthorized items, department personnel shall not be obligated to sort the materials and may refuse the entire load. Solid waste collection services are not available to multi-residential structures of more

than eight units.

Tree Waste/Junk Waste Collection Schedule

January	Tree Waste
February	Junk Waste
March	Tree Waste
April	Junk Waste
May	Tree Waste
June	Junk Waste
July	Tree Waste
August	Junk Waste
September	Tree Waste
October	Junk Waste
November	Tree Waste
December	Junk Waste

Neighborhood Depositories/Recycling Centers

Residents may dispose of tree waste / junk waste at one of the City's neighborhood depository facilities. Each user must provide proof of residency, including a Texas Driver's License or ID, a current utility bill or city property tax receipt. The depositories accept the same materials as the tree waste / junk waste collection (furniture, stoves, refrigerators, etc.) Depositories will accept up to 10 tires per month, per household. Residents must unload their tires and place them in a specified container. Materials brought in a commercial vehicle will not be accepted. SWMD

personnel will not unload your tires or tree waste / junk waste. Residents may use depositories four times per month. Locations are now open Wed. - Sun., except holidays from 10 a.m. to 7 p.m.* Citizens are encouraged to arrive at least 30 minutes before closing to allow adequate time to unload. All depositories also accept recyclables. Materials accepted include aluminum and tin cans, tree waste, plastic bottles and jugs (#1-#5 and #7), newspapers and magazines, glass bottles and jars, and used motor oil.

* Daylight Savings - Hours change from 9 a.m. to 6 p.m.

Neighborhood Depository & Recycling Center Locations

North	9003 N Main	3-1-1
Northwest	14400 Sommermeyers	3-1-1
Northeast	5565 Kirkpatrick	3-1-1
South	5100 Sunbeam	3-1-1
Southwest	10785 SW Freeway	3-1-1
Southeast	2240 Central Street	3-1-1

City Recycling Centers (Junk Waste not accepted)

Westpark Recycling Cntr. 5900 Westpark, 77057	Kingwood Recycling Cntr. 3210 West Lake Houston Pkwy
Ellington Airport/Clear Lake 246 Loop Rd., 77034	

...for more information, visit our website at www.houstonsolidwaste.org or call 3-1-1.

The TRASH FACTS

Going Green with SWMD

Automated Recycling - utilizes a 96-gallon green cart rolled to the curb for collection.

Recycling must be put inside the city-provided container which should be placed at the curb between 6 p.m. the day before and 7 a.m. on the scheduled collection day. The container must be accessible to the collection truck and not blocked by obstacles, including parked cars. Drivers will not move improperly placed containers. Containers must be removed from the curblane and/or public view by 10:00 p.m. on the day of collection and stored in a secure location.

What items can you recycle?

Newspaper
Magazines
Catalogs
Phone Books
Used Motor Oil



Plastic Containers #1 - 5 and 7 (rinsed & drained)
Aluminum and Tin Cans (rinsed & drained)
Cardboard (flattened)

Effective immediately, glass is no longer accepted in the green curbside recycling bin. You may still recycle glass at all City of Houston drop-off locations. For locations, please visit our website www.houstonsolidwaste.org/recycling.

Environmental Service Centers

The Environmental Service Centers provide drive through drop-off locations for Houston residents to bring their household hazardous waste such as anti-freeze, batteries, fuel, oil, paint, paint thinner, pesticides, herbicides and household cleaners. Residential electronic scrap items will also be accepted (monitors, televisions, printers, keyboards, mice, scanners, fax machines, telephone handsets, VCRs, CPUs, cellular phones and other small consumer electronics). These items should not be placed on the curb with or in your container for collection with garbage or tree waste / junk waste pickup. Clean, white styrofoam blocks (plastic #6) are now accepted at the ESC- South location. Packing "peanuts" are not accepted.

North - 5614 Neches, Building C (open 2nd Thursday of the month from 9 a.m.-3 p.m.)

South - 11500 South Post Oak (open every Tuesday and Wednesday from 9 a.m.- 3 p.m. and the 2nd Saturday of the month from 9 a.m. - 1 p.m.)

Free Reuse Chemical and Paint Take-Away

Every Friday from 9 a.m. – 12 p.m., household chemicals and paint that were brought to the ESC for disposal, but appear to be in good condition are made available for citizen reuse. Citizens may take away these items at no charge. A signed liability waiver will be required before removing materials from the site. There is a limit of six (6) chemical items and a cart load of paint per week. This service is only available at the ESC South location.

WESTPARK RECYCLING CENTER

The Westpark Consumer Recycling Center, 5900 Westpark, allows Houstonians the opportunity to recycle their used goods. The center accepts aluminum and tin cans, batteries, oil filters, used tires, computers and other residential electronic scraps, #1-7 plastic containers, glass bottles and jars, telephone books, office paper, cardboard, magazines, and used motor oil. Newspapers placed in a brown bag will also be accepted.

Clean, white styrofoam blocks (plastic #6) are accepted at the Westpark Recycling Center and ESC South. Packing "peanuts" are not accepted. Styrofoam is not accepted in the curbside recycling program.

The center is open Monday through Saturday from 8:00 a.m. to 5:00 p.m.

B.O.P.A.

(Batteries, Used Oil, Latex Paint, & Antifreeze)

The SWMD has a B.O.P.A. recycling operation at the Westpark Recycling Center. Residents may drop off batteries, used oil, latex paint, anti-freeze and tires from 8 a.m. to 5 p.m., Monday through Saturday, except holidays. The facility is a drive through operation so you do not have to unload your own vehicle.

...for more information, visit our website at www.houstonsolidwaste.org or call 3-1-1.

The TRASH FACTS

ReUse Warehouse

Construction material accounts for 38% of the waste stream in the Houston area. The Reuse Warehouse, a component of the City of Houston Solid Waste Management Department, benefits the community by providing space for excess building materials that would otherwise be dumped in local landfills. The facility accepts material from individuals, supply companies, and builders, and makes it freely available for reuse by any non-profit organization. The Reuse Ware-

house is funded in part by a grant from the Houston-Galveston Area Council.

Location:
9003 N. Main St.
Houston, TX 77022

Contact Information:
3-1-1 or
reuse.warehouse@houstontx.gov

HOURS OF OPERATION:

Tuesday - Friday:
8:30 a.m. to 4:30 p.m.

Every 2nd and 4th Saturday of the month
8:30 a.m. to 12:30 p.m.

Closed: Sunday - Monday

Extra Capacity Collection Fee

On June 19, 2002, Houston's City Council approved an ordinance amending Article IV of Chapter 39 of the Houston Code of Ordinances, approving and authorizing the creation of an Extra Capacity Collection Fee (ECC) for the SWMD. Under the umbrella of the ECC ordinance, the Add-A-Can and the Tags for Bags Program were created. Implementation of both programs began October 1, 2002.

Add-A-Can

This program provides residents with the opportunity of having a second or third garbage can serviced for a fee. Residents will have their first 96-gallon can serviced free. The fee for servicing the second/ third can may be added to the citizen's monthly water bill upon request of the service. Citizens who already have an extra can and wish to continue to have it collected will need to request a sticker for it. Call 3-1-1 to enroll in Add-A-Can.

Tags For Bags

Extra bags of garbage are collected only if they have a special tag attached. The "Tags for Bags" program allows residents the convenience of purchasing "tags" instead of additional cans if they require extra service occasionally. These tags may be purchased at Fiesta, HEB, Sellers Bros. and participating Kroger stores. Residents may also download an order form at houstonsolidwaste.org and send the completed form and payment through the mail. Yard waste bags do not require tags.



REQUEST THE SOLID WASTE MASCOT

To request the Solid Waste Management Department mascot or a Speaker from the SWMD please call 3-1-1, the City's Customer Service Hotline.

City of Houston
 Solid Waste Management Department
 PO Box 1562
 Houston, TX 77251

www.houstonsolidwaste.org
 Houston residents can dial 3-1-1 for non-emergency calls. The 3-1-1 Service Center provides Houstonians with one easy to remember telephone number for quick reliable access.

The Trash Facts is a newsletter published by the Solid Waste Management Department. Information may be reproduced for public dissemination by civic groups and neighborhood organizations.

Harry J. Hayes, SWMD Director
 Irma Reyes, Public Information Officer

RECYCLE MORE

The City of Houston accepts recyclables at curbside, the Neighborhood Depository/Recycling Centers and drop-off facilities.

Examples of acceptable plastics and materials:



1 Plastics
Soft drink and water bottles



2 Plastics
Milk jugs, juice bottles, and food containers



3 Plastics
Detergent bottles, shampoo bottles



4 Plastics
Condiment bottles



5 Plastics
Yogurt containers, caps, straws and empty medicine bottles



6 Plastics
Styrofoam blocks
(Not Accepted in Curbside Recycling Program. Accepted at the Westpark Recycling Center and ESC - South only)



7 Plastic
Large water bottles



Mail, Envelopes, and Paper



Newspapers, Magazines, Telephone Books and Catalogs



Aluminum & Tin Cans



Flattened Cardboard



Glass

(Not Accepted in Curbside Recycling Program. Accepted at Neighborhood Depository/Recycling Centers and drop-off facilities.)



Used Motor Oil

Do not place in recycling bin. Place on curb or bring to Westpark or ECS's.



City of Houston
Solid Waste Management
Department

Follow us:

@houstontrash /houstonsolidwaste

www.houstonsolidwaste.org

or call 3-1-1 for additional information.

2017 Bi-Weekly Collection Schedule

Schedule A

Schedule B

○ City Holiday *(Follow the adjusted "Holiday Schedule")

January

S	M	T	W	T	F	S
1	2	3	4	5	6	7
8	9	10	11	12	13	14
15	16	17	18	19	20	21
22	23	24	25	26	27	28
29	30	31				

February

S	M	T	W	T	F	S
	1	2	3	4		
5	6	7	8	9	10	11
12	13	14	15	16	17	18
19	20	21	22	23	24	25
26	27	28				

March

S	M	T	W	T	F	S
		1	2	3	4	
5	6	7	8	9	10	11
12	13	14	15	16	17	18
19	20	21	22	23	24	25
26	27	28	29	30	31	

April

S	M	T	W	T	F	S
					1	
2	3	4	5	6	7	8
9	10	11	12	13	14	15
16	17	18	19	20	21	22
23	24	25	26	27	28	29
30						

May

S	M	T	W	T	F	S
	1	2	3	4	5	6
7	8	9	10	11	12	13
14	15	16	17	18	19	20
21	22	23	24	25	26	27
28	29	30	31			

June

S	M	T	W	T	F	S
				1	2	3
4	5	6	7	8	9	10
11	12	13	14	15	16	17
18	19	20	21	22	23	24
25	26	27	28	29	30	

July

S	M	T	W	T	F	S
						1
2	3	4	5	6	7	8
9	10	11	12	13	14	15
16	17	18	19	20	21	22
23	24	25	26	27	28	29
30	31					

August

S	M	T	W	T	F	S
	1	2	3	4	5	
6	7	8	9	10	11	12
13	14	15	16	17	18	19
20	21	22	23	24	25	26
27	28	29	30	31		

September

S	M	T	W	T	F	S
						1
2	3	4	5	6	7	8
9	10	11	12	13	14	15
16	17	18	19	20	21	22
23	24	25	26	27	28	29
30						

October

S	M	T	W	T	F	S
	1	2	3	4	5	6
7	8	9	10	11	12	13
14	15	16	17	18	19	20
21	22	23	24	25	26	27
28	29	30	31			

November

S	M	T	W	T	F	S
						1
2	3	4	5	6	7	8
9	10	11	12	13	14	15
16	17	18	19	20	21	22
23	24	25	26	27	28	29
30						

December

S	M	T	W	T	F	S
						1
2	3	4	5	6	7	8
9	10	11	12	13	14	15
16	17	18	19	20	21	22
23	24	25	26	27	28	29
30	31					

- If your collection day is during the "A Week" then follow the schedule for the shaded yellow week. Ex: Thursday A service days in January are the 5th & 19th.
- If your collection day is during the "B Week", you will follow the unshaded week's schedule. Ex: Tuesday B service days in January are the 10th and 24th.

*For the Holiday Schedule and additional information, visit our website at www.houstonsolidwaste.org or call the Houston Service Helpline 3-1-1.

WEST BELLFORT PROPERTY OWNERS ASSOCIATION, INC.
ARCHITECTURAL CONTROL APPLICATION

In accordance with the governing documents of your Association, all exterior improvements and/or changes from the original construction must be submitted for and approved by the Architectural Control/Review Committee (ACC/ARC). Failure to receive approval for the improvement and/or change may result in you having to remove, alter or change the improvement in order to comply with the rules and regulations of the Association. Please complete the application below in its entirety and return to STERLING ASSOCIATION SERVICES, INC. (SASI) to 11201 LAKE WOODBRIDGE, SUGAR LAND, TX. 77478 (Phone 832-678-4500) Email: ry@sterlingasi.com or Facsimile 832-678-4497)

CommunityAssociation _____

Property Address _____ Sec/Blk/Lot ____ / ____ / ____

Name _____

Work# _____ Home# _____ E-mail _____

Mailing Address _____

No improvement will be considered and is automatically denied without the following:

- A site plan/survey indicating location of the proposed improvement, providing the distance from the structure to the fence and/or lot lines and easements.
► Color swatches and samples or pictures of materials to be used in the improvement (shingle, paint, brick, stain, siding, etc).
► Completion of all applicable areas below of the application.

Status: Start / / - Stop Date / / Date of Completion / / Under Construction

Check one of the following:

- Exterior Paint, Roof (Weatherwood or Driftwood Only), Pool/Spa, Patio (ground), Sunroom/Patio Enclosure, Permanent Basketball Goal, Storage Bldg, Patio Cover, Gazebo, Portable Basketball Goal, Siding, Deck, Arbor/Pergola, Room Addition, Antenna/Dish, Fence, Mailbox, Driveway/Sidewalk (new & extension), Exterior Lighting, Gates/ Burglar Bars, Solar Screens, Landscape Statuary, Storm Doors/Windows, Window Shades/ Awnings, Playground Equipment, Other

Size: Height _____ Width _____ Length _____

Location of Improvement:

Front of House Back of House Left side of house (stand and face house) Right side of house (stand and face house)

List of Materials with color and/or material samples or photos provided (check all applicable)

- Base paint color, Trim paint color, Garage door paint color, Garage door trim color, Stain color, Fence color/material, Siding color/material, Roof color, Other, Other

I understand the ACC/ARC are a group of volunteers in the community and will do their best to act as quickly as possible in their determination regarding my application. I hereby certify that the proposed construction/ modification is in full compliance with all the Declaration of Covenants, Conditions and Restrictions and all guidelines currently adopted by the Association. I do understand the committee has 30 days to review the request.

I understand that the decisions are determined concerning only my architectural plans submitted. I am responsible to obtain whatever easements, permits, licenses and approvals, which may be necessary to improve the property in accordance with the submitted plans.

Owner's Signature
APPROVED/APPROVED CONDITIONALLY/DISAPPROVED.

Date
ACC COMMITTEE CHAIR SIGNATURE and Date

PROPERTY ASSOCIATION COMMITTEES:	
<i>If you would like to serve on one of these committees, please come to the next Board meeting</i>	
Architectural Review (ARC):	Barbara Hite, Jeannette Calhoun, Marc Warren
Clubhouse:	Jeannette Calhoun, Joy Cunningham
Landscape:	Jeannette Calhoun
Newsletter:	Dyaz Godfrey, Mari Angelo
Parks & Recreation:	Zally Lazares, Asher Belles, Neal Harris
Pool:	Phil Abrams
Safety:	Barbara Hite, Yonah Nathan
BLOCK CAPTAINS:	Volunteers Needed!

WEBSITE INFORMATION:	
City of Houston (General Info):	www.houstontex.gov
City of Houston Services (311 Online):	http://hfdapp.houstontx.gov/311/index.php
Constable Precinct 7 Vacation Watch:	http://www.harriscountytexas.gov/conpct7/
Texas DPS Driver's License Renewal:	http://www.txdps.state.tx.us/driverlicense/
West Bellfort Property Owner's Association:	www.westbellfortpoa.com

ADDITIONAL INFORMATION	
Concert Arenas	
Arena Towers	http://www.arenahouston.com
Cynthia Woods Mitchell Pavilion	http://www.woodlandscenter.org
Miller Outdoor Theater	http://milleroutdoortheatre.com
Sports Complexes	
BBVA Compass - Dynamo Soccer/TSU Football	http://www.bbvacompassstadium.com
Minute Maid Park - Astros	http://houston.astros.mlb.com/hou/ballpark/index.jsp
NRG Stadium & Park - Texans & Rodeo	http://nrgpark.com/nrg-stadium
Toyota Center - Rockets	http://www.houstontoyotacenter.com
Things to do in Houston:	http://www.visithoustontexas.com
Volunteering Opportunities:	
City of Houston	http://volunteerhouston.org
Harris County	http://www.harriscountycitizenrcps.com

USEFUL NUMBERS	
Name	Phone Number
Animal Control (BARC)	713-229-7300
Anti-Gang Office	832-393-0931
Brays Oaks Management District	713-595-1221
Citizens' Assistance	832-393-0955
City Council District J	832-393-3015
City Council District K	832-393-3016
City of Houston Services:	311
Emergency	911
Harris County Flood Control:	713-684-4197
Health and Human Services	832-393-5169
Houston Fire Department Non-Emergency	832-394-6700
Houston ISD	713-556-6000
Houston Police Department District #17	713-773-7901
Houston Police Department Non-Emergency	713-884-3131
Mayor's Office	832-393-1000
Milne Elementary School	713-778-3420
Parks Department	832-395-7000
Precinct 7 Dispatch	713-643-6118
Public Works and Engineering	832-395-2511
Solid Waste Management	713-956-6589
Sterling Association Services (WBPOA's Property Management)	832-678-4500 x253
Welch Middle School	713-778-3300
Westbury High School	713-723-6015

TEXAS DPS OFFICE			
Driving Tests / In-Person Driver's License New & Renewal			
Closest (South Gessner close to West Airport - Approx 2 Miles)			
12220 South Gessner	Mon - Thur:	7:30am - 6:00pm	
Houston, TX 77071	Fri:	7:30am - 5:00pm	
Phone: 713 / 219-4100	Sat:	Closed	
Second Option (Rosenberg - US 59 @ Hwy 36 - Approx 20 Miles)			
28000 Southwest Freeway, Suite A	Mon - Thur:	7:30am - 6:00pm	
Rosenberg, TX 77471	Fri:	7:30am - 5:00pm	
Phone: 281 / 517-1630	Sat:	Closed	
More Info:			
http://www.txdps.state.tx.us/administration/driver_licensing_control/rolodex/searchresults.asp			

LOCAL LIBRARIES		
City of Houston Libraries		
Morris Frank Library	Mon&Thur	11am - 6pm
Brays Oaks Towers Building	Tue	12pm - 8pm
10103 Fondren	Wed	10am - 6pm
Houston, TX 77096	Fri	1pm - 5pm
Phone: 832 / 393-2410	Sat	10am - 5pm
<i>on Fondren, just passed Willowbend</i>		
Meyer Branch Library	Sun&Mon	Closed
5005 West Bellfort Street	Tue&Wed	10am - 6pm
Houston, TX 77035	Thur	12pm - 8pm
Phone: 832 / 393-1840	Fri	1pm - 5pm
<i>on West Bellfort, just before Kroger's</i>		
Houston Main / Central Library	Mon--Thur	10am - 8pm
500 McKinney	Fri&Sat	10am - 5pm
Houston, TX 77002	Sun	1pm - 5pm
<i>Downtown at McKinney and Smith; garage parking entrance off Lamar; rate is \$2 /hour, max \$16. Street parking free on Sundays.</i>		
NO STREET PARKING EXCEPT ON SUNDAYS - TOWING IS STRICTLY ENFORCED!		

Harris County Library		
West University Branch	Mon	10am - 8pm
6108 Auden	Tue&Wed	10am - 6pm
Houston, TX 77005	Thur&Fri	1pm - 6pm
Phone: 713 / 668-8273	Sat	10am - 5pm
<i>@ corner of Auden & Milton in West U</i>		
	Sun	Closed

STATE, COUNTY & CITY OFFICIALS		
Position	WBPOA's District	Currently Held By
Mayor	Houston	Sylvester Turner
County Judge:	Harris County	Ed Emmett
Tax Assessor-Collector:	Harris County	Ann Harris Bennett
Treasurer:	Harris County	Orlando Sanchez
County Attorney:	Harris County	Vince Ryan
District Attorney:	Harris County	Kim Ogg
County Clerk:	Harris County	Stan Stanart
District Clerk:	Harris County	Chris Daniel
County Sheriff:	Harris County	Ed Gonzalez
County Constable:	Precinct 7	Constable May Walker
County Commissioner:	Precinct 1	Rodney Ellis
Metro Transit Authority Chairman:	Houston Metro Area	Gilbert Andrew Garcia
City of Houston Council Member:	District K	Larry Green
HISD School Superintendent:	Houston	Open
HISD School District:	District 9	Wanda Adams
Houston Community College District:	District 9	Christopher W. Oliver
Justice of the Peace (Precinct 7):	Position 1	Judge Hillary H. Green
Justice of the Peace (Precinct 7):	Position 2	Judge Zinetta Burney
State Board of Education:	District 4	Lawrence A. Allen, Jr
State Senator:	District 13	Borris Miles
State Representative:	District 131	Dr. Alma A. Allen
Governor:	Texas	Greg Abbott
US Representative:	District 9	Al Green
US Senators:	Texas	John Cornyn Ted Cruz