

Welcome!

- We will begin at 7pm
- If you're a paid PTA member, please sign in and secure your voting sheet
- Please note this meeting is being recorded



PTA General Meeting May 18th, 2023

Agenda

- Annual Accomplishments
- Introduction of Nominees
- MES Staff Presentation
- Our fundraising philosophy
- Budget review & member vote
- Executive Board election



Introduction of the PTA Board



Nancy Greene
President



Osnat Zemer
Vice President



Heather MacClintock
Treasurer



Nicole Appell
Secretary



Benita Hsueh
Volunteer Coordinator



Evita Hu
Enrichment



Nikita Dighe
Communications



Sarah Morris
Fundraising

Mission

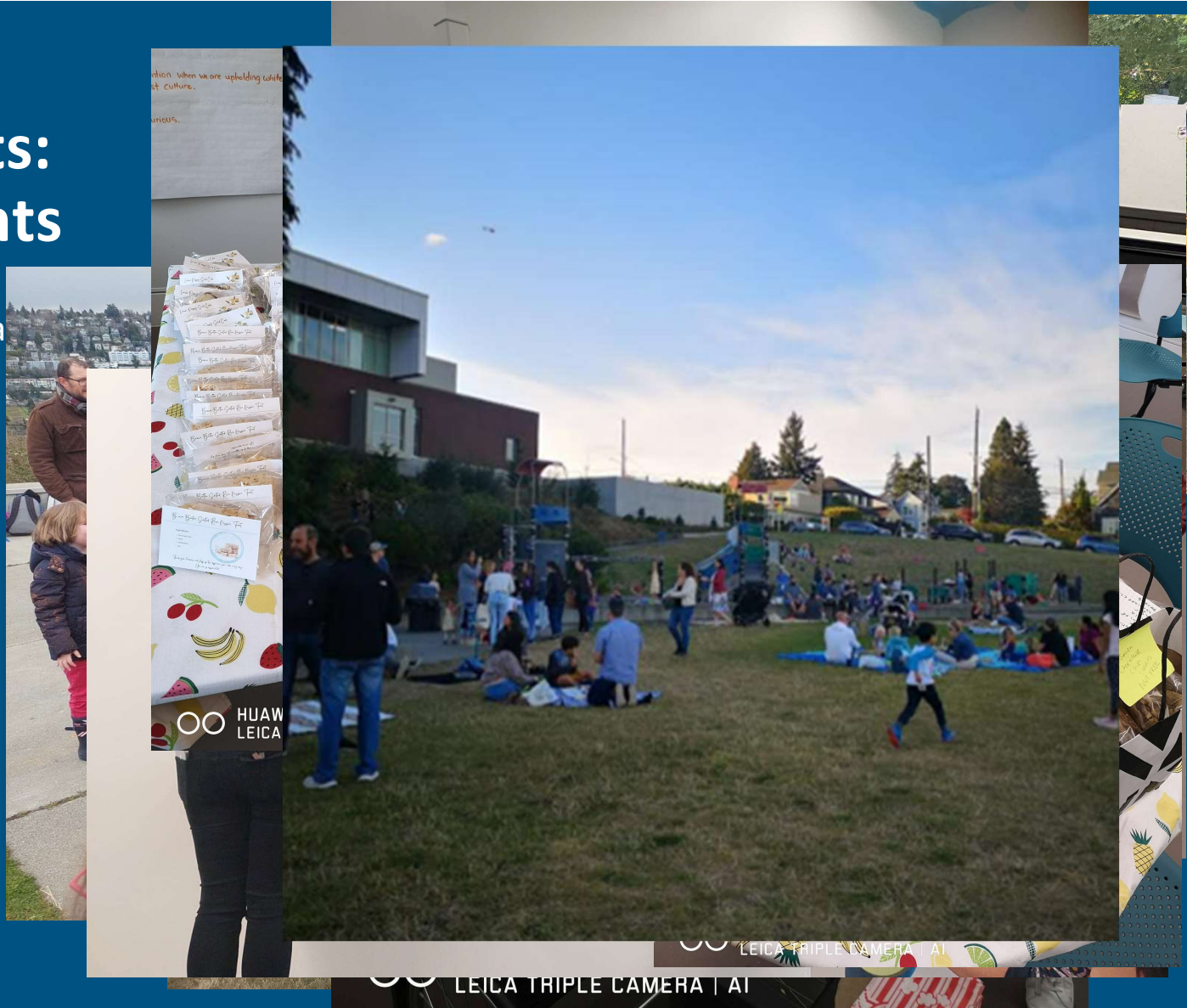
- The mission of the Magnolia Elementary School PTA is to make every child's potential a reality by engaging and empowering families and communities to advocate for all children.
- The MES PTA commits to anti-racism. We will support anti-racist policies, programming and practices for our children's education and well-being in an effort to work toward a strong and inclusive school community.
- We commit to examine our own practices and structures to work towards eliminating implicit bias, racism and inequities.

2022-2023 School Year Focus: **(Re)Building Community**



Accomplishments: Community Events

- Popsicles in the park for K a
- Fall Festival
- Family Picnic
- Movie Night
- Game Night
- Popcorn Friday
- Spirit Gear
- Serendipity Social



Accomplishments: School & Student Support

Student-Focused Efforts

- Funding for student individual academic support
- Curriculum supports (Math4Love, iReady)
- School assemblies (Book-It and JazzED)
- Partially funded 5th grade trip to Islandwood
- Support to school Welcome Back Night & Open House
- Coordination, planning, enrollment, and scholarships for after-school programs
- Yearbook funding & sales

Staff-Focused Efforts

- Teacher appreciation & break room contributions
- Recess and lunch volunteers
- Identified and coordinated with room parents and class volunteers
- Assisted with book fair, picture day, and Lit Fest
- Provided class supplies where needed
- Professional development funding

Accomplishments: After-School Programs



MES's after-school programs were previously run by KidsCo, which no longer offers this service post-pandemic.



15 classes offered
in 2023



261 students
enrolled



PTA volunteers have worked tirelessly this year to secure providers and classroom space, find a registration platform, and develop a class schedule so we can offer after-school programming at MES again.



We are proud to offer this coordinating service for the school, and look forward to continuing next year with your help.

Planning is underway for the 2023-2024 school year! Volunteers are needed!

INTRODUCTION:

Executive Board Nominees

We have four (4) Executive Board positions to fill.
The MES PTA is open to role-sharing board positions

PTA Co-President

- Osnat Zemer-Frysz (role share desired)
- Sarah Morris (role share desired)

PTA Co-Vice President

- Benita Hsueh Baker (open to sharing)

PTA Treasurer

- Heather MacClintock (assistant desired)

PTA Secretary

- Nicole Appell

Interested PTA Members may self-nominate;
We will call for additional nominees during the board vote

MES STAFF PRESENTATION

Kelly Walter- Principal

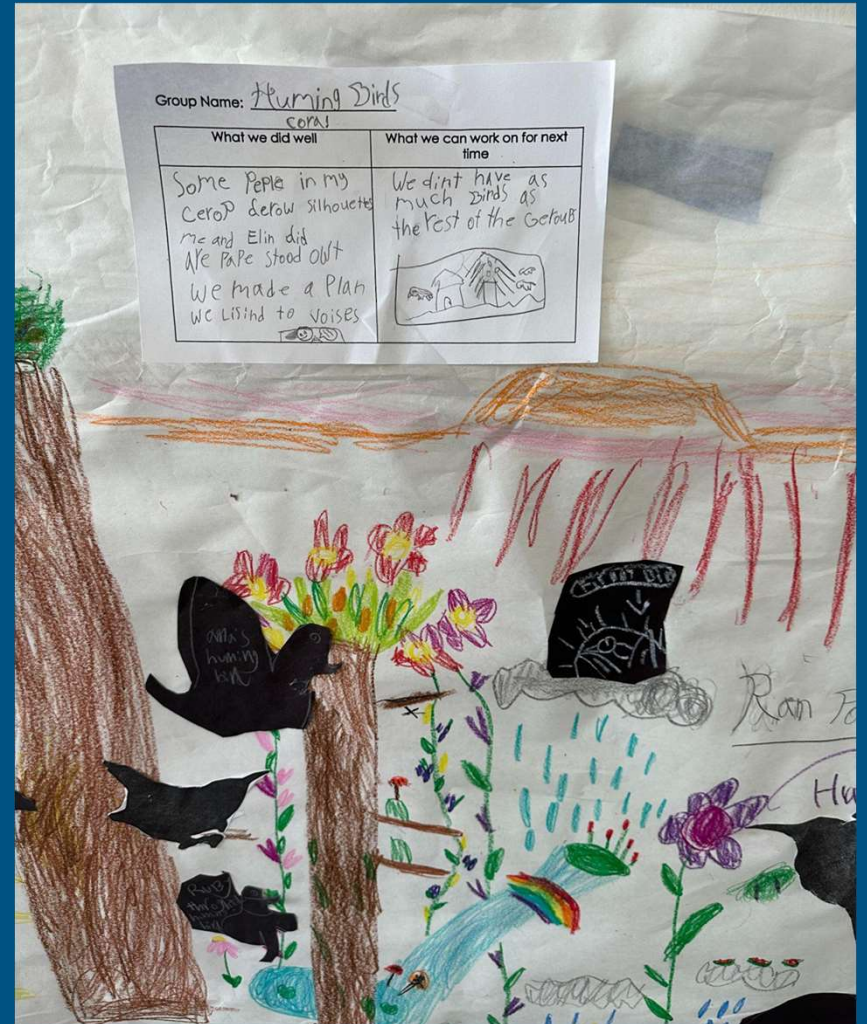
Toni Harmer- 3rd Grade Teacher

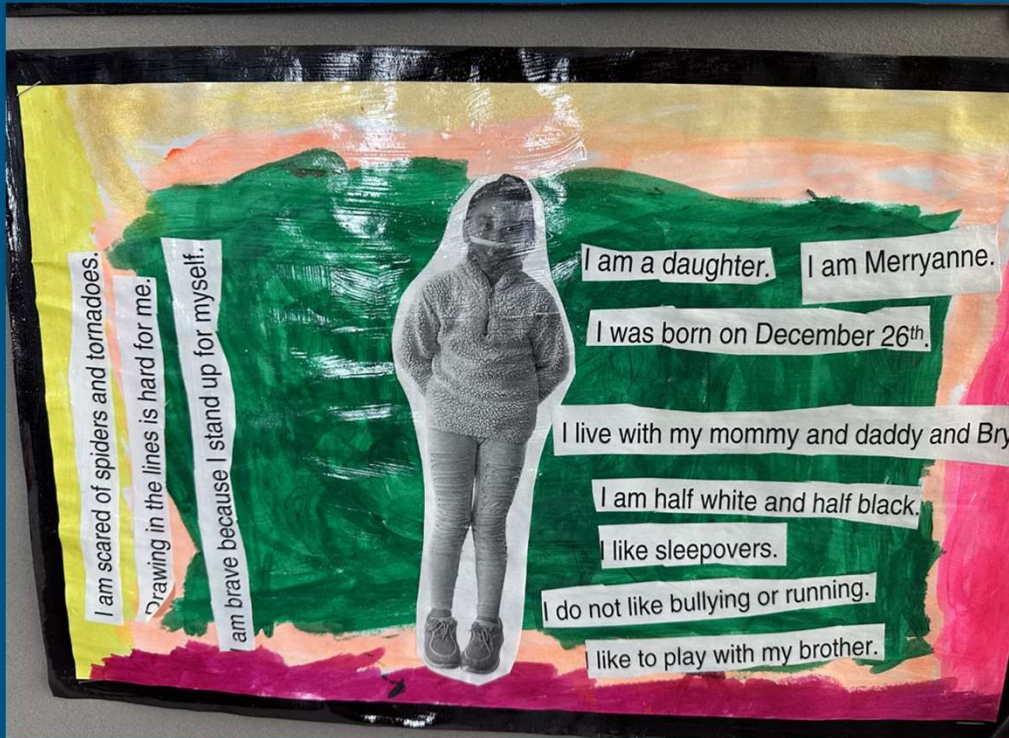
Rachel Marks- K Teacher



Student Work

Project Based Learning





Student work

Identity- me to we

What worked well in 22/23?

- Intervention (SIPPs/ tutors)/ Math Enrichment
- MTSS (5 week data review)
- Identity work- shift to from me to we
- Building out tier 1 Instructional practice
 - Math 4 Love PD
 - 3-5 Magnetic Reading & I Ready

What's the plan for 23-24?

- Continue to build our school community
- Continue intervention with fewer tutors
- Partnership with SPU
- Project Based Learning
- I Ready and Magnetic Reading 3-5



A **Systematic Approach** for Building Skilled Readers

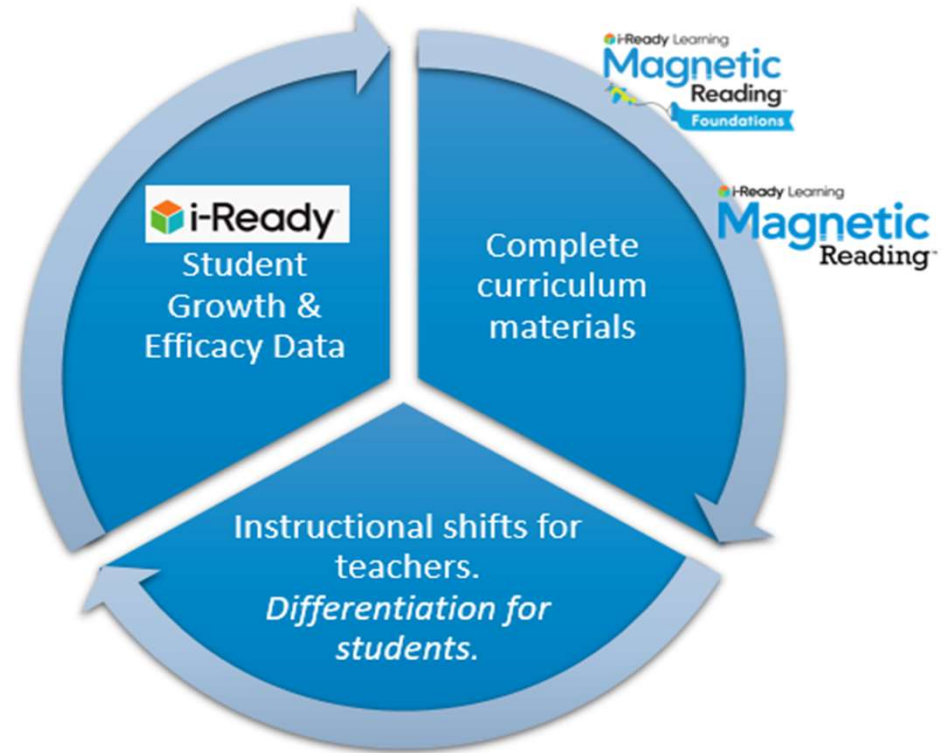
Magnetic Reading's systematic approach begins with the research-based scope and sequence of foundational skills beginning in Grade K and continuing to Grade 2. This establishes a solid foundation for the comprehension skill focus in Grades 3–5.



Perfect Scores & “All Green” on EdReports

Teachers skillfully
and confidently
connect the art of
teaching with
Reading Science

Magnetic Reading™



i-Ready Learning
Magnetic Reading™
Foundations





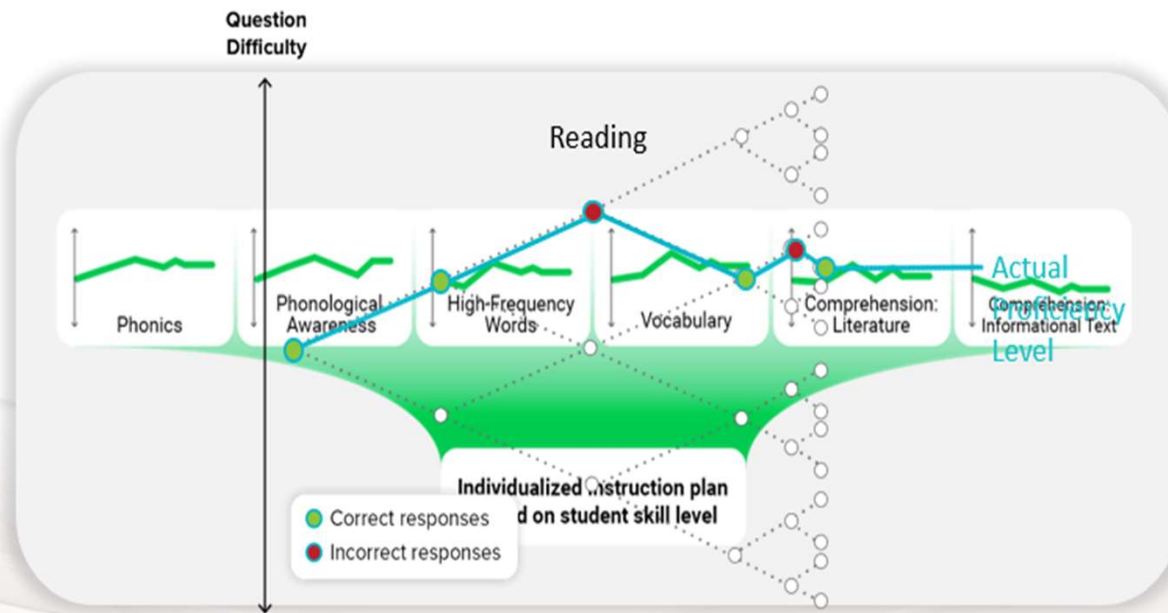
Draw Students to Grade-Level Learning with Diverse, **Engaging Texts**

The regular use of diverse texts in Grades 3–5 supports knowledge-rich learning protocols and gets rave reviews from students! These texts act as both windows into new worlds and mirrors in which students see themselves. The texts honor the cultures and experiences of all learners so everyone can participate equally in classroom activities.

Multiple texts in each Focus Lesson connect to build background knowledge on the lesson topic.

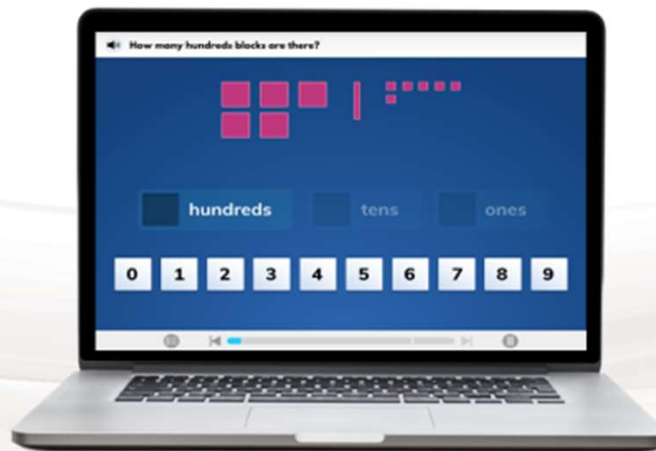
Topics include conflict resolution, building empathy, and awareness.

Adaptive Diagnostic Assessment



i-Ready Personalized Instruction

Provides students with lessons based on their individual skill level and needs, so they can learn at a pace that is **just right for them**



i-Ready Personalized Instruction Design Principles

**Dive
Right In**

Start with a challenge rather than passive instruction

**Strategic
Scaffolds**

Supports and tools that help students' access what they're learning

**Productive
Struggle**

Instruction that allows for failure but provides a path to success

**Responsive
Instruction**

Right amount of practice and instruction at the right time

**Student
Agency**

Gives students ownership of their learning

iReady Reading Growth

iReady
Students work for 40 minutes
on iReady per week in
2-3 sessions

Subject: **Reading** | Class/Report Group: **Harmer, Toni Reading** | Comparison Diagnostic: **Most Recent**

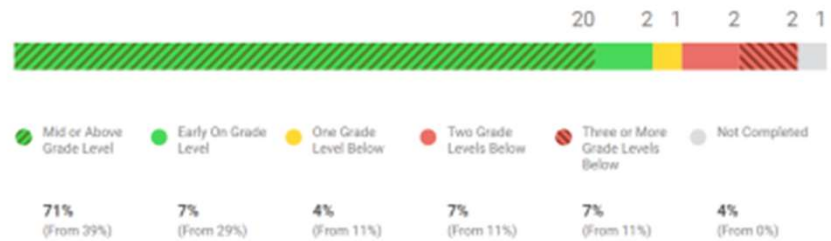
Progress to Annual Typical Growth (Median)



The median percent progress towards Typical Growth for this group is 136%. Typical Growth is the average annual growth for a student in their grade and baseline placement level.

[Learn More About Growth](#)

Current Placement Distribution



Recount Key Details

- The **main idea** is something important that the author wants readers to understand.
- Key details are important information that tell about the main idea. Recounting key details helps you understand the main idea.

Reread/Think

Reread paragraphs 4-7 in "Deep Sea Survival." Look for key details about each animal's features. Write those key details in the chart.

Animal	Key Details About the Features That Help Animals Survive
black dragonfish	The lights on its head, a wide mouth, and sharp teeth help it catch prey.
anglerfish	anglerfish have long thin rods with a glowing light attached to its head. the light from the glowing tip attracts prey.
deep-sea squid	they squirt out a glowing cloud of liquid light which predators attract.
deep-sea spider	a deep-sea spider can grow as long as a dinner plate!
gulper eel	a gulper eel has a mouth so big it can swallow prey as big as... IT'S SELF!!
jellyfish	Jellyfish have clear bodies.

Talk

Look at the chart and talk to a partner about the key details about each animal's features. Why did you include those details in your chart?



One key detail I included in my chart is _____

The reason I included it is because _____

Write

Recount the key details in the text and explain how they support the main idea that deep-sea animals have special features that help them survive. Begin your writing by stating the main idea and then recount the key details.

Deep sea animals use their adaptive traits to survive. For example, the deep-sea squid squirt out a glowing cloud of light when predators attack and another one is that angler fish have long thin rods with a light on its head. The light helps it attract prey.

WRITING CHECKLIST

- I wrote about the main idea.
- I used key details to explain the main idea.
- I used complete sentences.
- I used correct spelling, punctuation, and capitalization.

Magnetic Reading offers all students access to grade level texts. Some work with partners & others are in small teacher led groups

Our Fundraising Philosophy

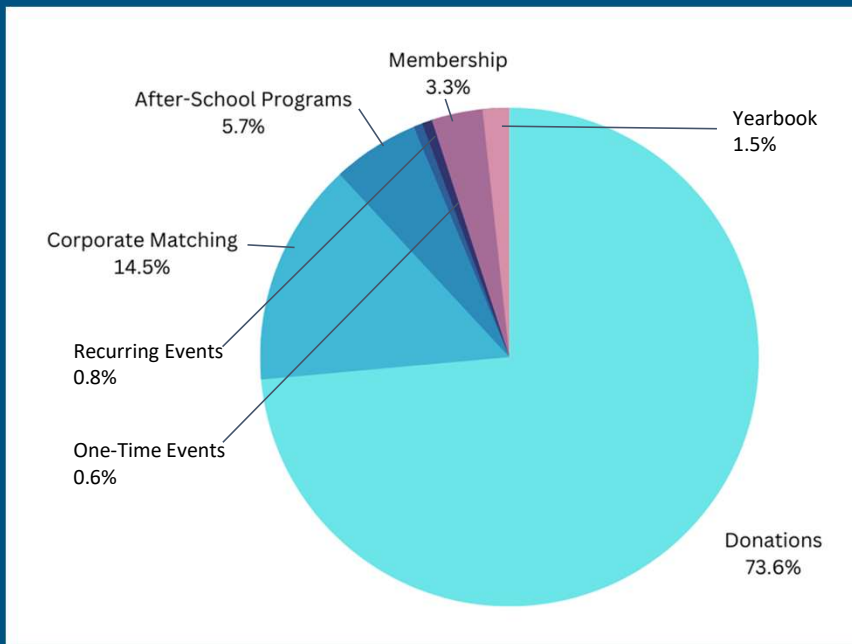
MES teachers appreciate families' desire to help make our jobs easier and to meet the needs of our students. We prioritize:

- **Inclusion.** Everyone can participate in the way that they are able
- **Impact.** We use funds to pay for teacher professional development, supplemental curriculum, tutors and recess/ lunch monitors to expand teacher practice and capacity having a positive impact on student learning

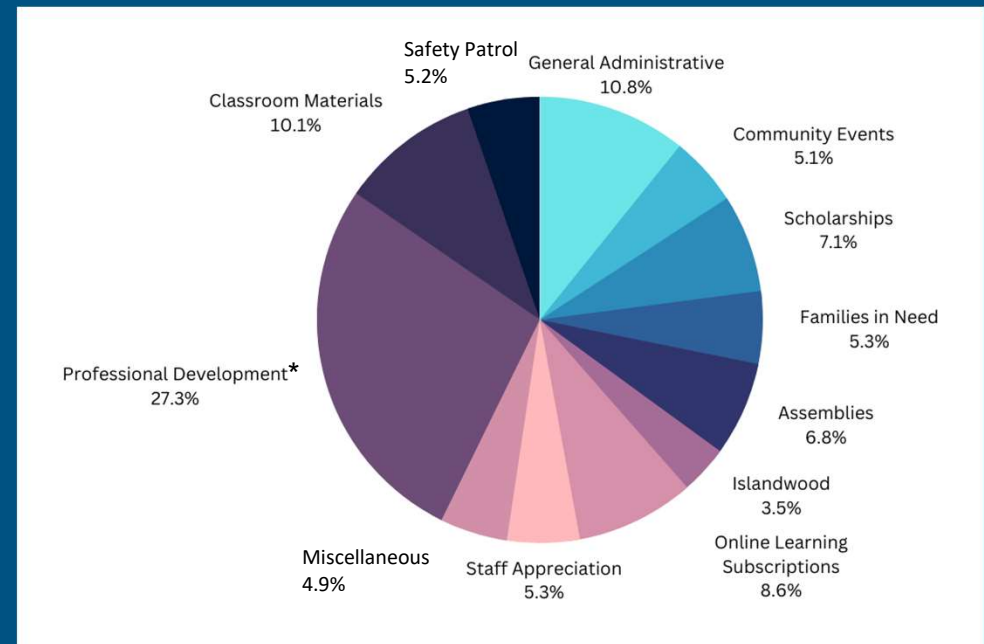


2022-2023 Budget Review

Overview of Revenue



Overview of Expenses



* Includes Math4Love workshops and Positive Discipline training for teachers

Proposed 2023-2024 Budget

Page 1 - Revenue

Magnolia Elementary PTA 6.15.2
Proposed Budget 2023-2024
With Comparisons to 2022-2023 School Year

	Actual YTD	22/23 Budget	23/24 Budget
REVENUE			
Fundraising			
After-School Program Fees (6Cricket)	3,484.83		6,500.00
Amazon Smile	602.56	1,000.00	0.00
Corporate Matching Donations	8,963.16		5,000.00
Donations	45,366.00	40,000.00	50,000.00
One-Time Events	355.00		
Reoccurring After School Events	401.90	1,000.00	750.00
Transfer from Reserve	0.00	30,000.00	36,250.00
Total Fundraising	59,173.45	72,000.00	98,500.00
Membership			
Membership Dues	2,000.00	2,000.00	2,250.00
Teacher Membership Sponsor	40.00		
Total Membership	2,040.00	2,000.00	2,250.00
Sales			
Spirit Gear			
Yearbook	1,068.00		
Math for Love Games	-123.73		
Total Sales	944.27	0.00	0.00
Total Revenue	62,157.72	74,944.27	100,775.00

Proposed 2023-2024 Budget

Page 2 - Expenditures

	Actual YTD	22/23 Budget	23/24 Proposed
EXPENDITURES			
General Administrative			
Accounting & Tax Prep	750.00	750.00	750.00
Bank Charges & Fees	60.00	100.00	100.00
Charitable Registration	20.00	500.00	250.00
Insurance & Cprp Fees	345.00	500.00	500.00
Paypal Fees	483.69	1,875.00	
Sales Taxes	109.47		
Service Fees to Council	262.50		400.00
Software	330.80	350.00	650.00
Supplies & Materials	170.87	500.00	500.00
WSPTA Fees	655.00	1,000.00	1,000.00
Total General Administrative	3,077.86	5,575.00	4,150.00
Programs & Committees			
Community Building Events	1,442.16	5,000.00	3,000.00
Enrichment Coordinator Stipend		1,500.00	1,500.00
Enrichment Scholarships	2,024.27	2,000.00	5,000.00
Families In Need - PTA	1,500.00	5,500.00	2,000.00
Volunteer Appreciation			500.00
Year End Celebration		1,000.00	750.00
Total Programs & Committees	4,966.43	15,000.00	12,750.00
Leadership Development			
WSPTA Convention	0.00	600.00	600.00
WSPTA General Assembly	0.00	400.00	400.00
Total Leadership Development	0.00	1,000.00	1,000.00

	Actual YTD	22/23 Budget	23/24 Proposed
School Support			
5th Grade Promotion	500.00	500.00	500.00
Assemblies	1,950.00	2,500.00	
Collaborative Planning Support		2,500.00	9,000.00
Families in Need Support		5,000.00	500.00
Family Events	500.00	1,000.00	500.00
Field Trip Buses		2,000.00	
In-School Enrichment Activities and Assemblies	1,000.00	3,500.00	5,000.00
Islandwood Deposit	2,500.00	2,500.00	2,500.00
Islandwood Scholarship	0.00	1,000.00	1,000.00
Literacy Assessment Support		2,500.00	
Math Curriculum Support		3,500.00	
Movie License	415.00	415.00	425.00
Online Learning Subscriptions	2,454.18	5,000.00	
Reading Curriculum Support	N/A	N/A	26,000.00
Staff Appreciation	1,500.00	N/A	1,750.00
Safety Patrol Lead Stipend	1,400.00	1,400.00	
Staff Professional Development	7,800.00	7,500.00	3,000.00
Staff Classroom Materials Reimbursements	2,895.70	5,400.00	5,700.00
Tutors/Recess Monitors	N/A	N/A	20,500.00
Yearbook	5,300.00	5,500.00	6,500.00
Total School Support	28,214.88	51,715.00	82,875.00
Total Expenditures	36,259.17	73,290.00	100,775.00
Net Revenue	25,898.55	1,654.27	0.00

MEMBER VOTE: BUDGET RESOLUTION

PLEASE RAISE YOUR RED PTA MEMBER SIGNIFIER (PAPER) TO INDICATE YOUR
VOTE WHEN CALLED

Call for additional Nominees

Please stand if you're interested in nominating yourself or another Member in attendance for one of the four executive board positions.

- President
- Vice President
- Treasurer
- Secretary

Nominating Committee will capture name(s), desired role(s), and allow 1-minute personal statement.

Executive PTA Board Vote: Nominee Recap

Co-President

- Osnat Zemer-Frysz (role share desired)
- Sarah Morris (role share desired)

Vice President

- Benita Hsueh Baker (open to sharing)

Treasurer

- Heather MacClintock

Secretary

- Nicole Appell

MEMBER VOTE: EXECUTIVE BOARD

PLEASE RAISE YOUR RED PTA MEMBER SIGNIFIER (PAPER) TO INDICATE YOUR
VOTE WHEN CALLED

Non-Executive Board Roles:

These positions are appointed by the incoming Executive Board. If you are interested in a Non-Executive Board role, please speak to a current Board member or email INFO@MAGNOLIASCHOOLPTA.ORG.

- **After School Program Co-Chairs***
 - **Events & Outreach***
 - **Assistant Treasurer***
 - **Volunteer Coordinator***
 - **Room Parent Liaison***
 - **Communication Co-Chairs**
 - **Fundraising**
 - **IT**
 - **Facilities**
 - **Legislative**
 - **Membership**
- *Prioritized positions*

Before You Go: We Still Need YOU!

1. Teachers and staff need help during recess and lunch. Please sign up at right
2. **Don't forget our upcoming Culture Celebration on 6/6.** Sign up to bring a food or craft
3. Fundraising is ALWAYS on our minds. Sign up using the QR code or visiting our web site
4. We'd love to know what you'd like more or less of from your PTA. Please take our survey – a random winner will be selected for a special prize (to be announced)

1. Volunteer



2. Celebrate



3. Donate



4. Survey



Time for us to listen

Question & Answer, or Comment Period



**Thank you for coming, and we
hope you enjoy the last few
weeks of the school year!**

