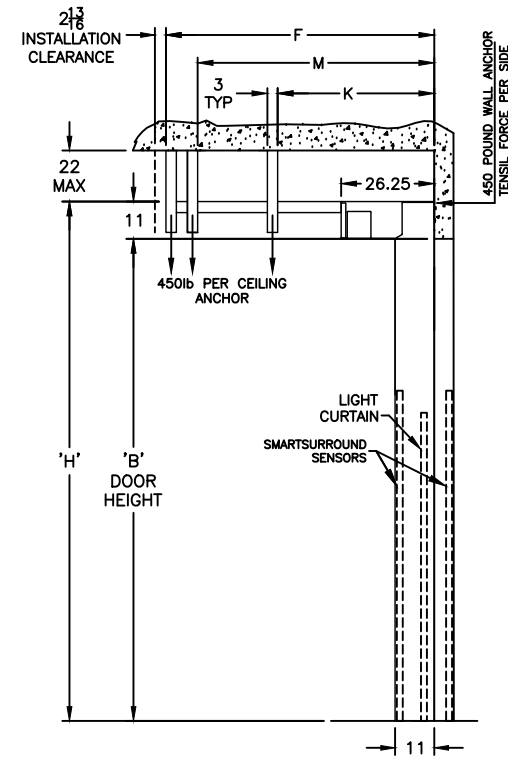
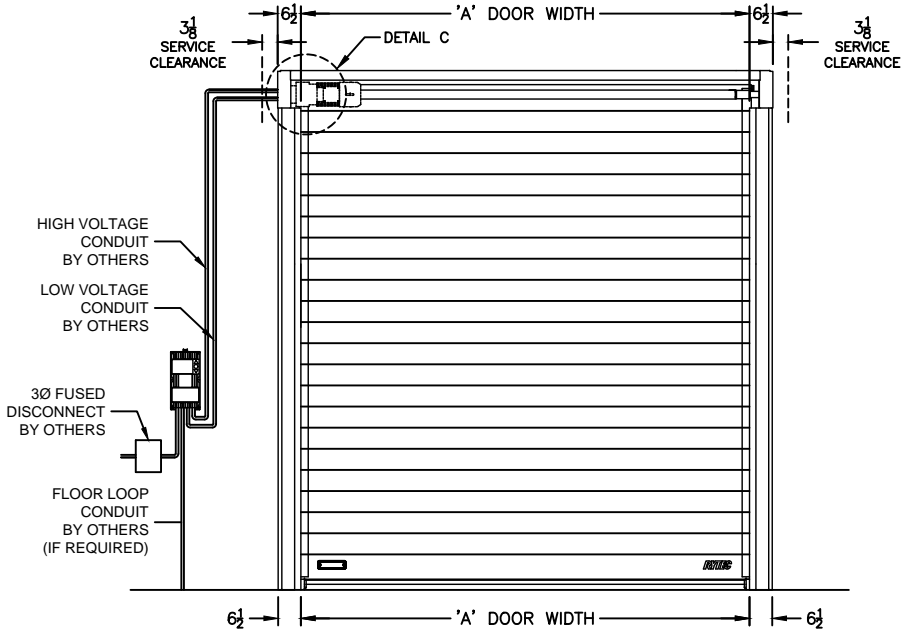
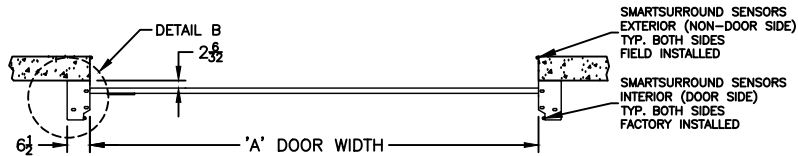


**DIMENSIONAL VARIABLES**

DRAWING NOT TO SCALE; DIMENSIONS IN INCHES

DOOR NO.	A	B	C	F	M	K	H

MILLIMETERS  
 ACTUAL DOOR SIZE IS PRODUCED IN MILLIMETERS  
 REQUESTED DOOR SIZE IS CONVERTED TO MILLIMETERS  
 AND ROUNDED UP TO THE NEAREST 10MM



- ELECTRICAL OPTIONS**
- 460v - 3ph
  - 230v/208v - 3ph
  - 230v - 1ph
  - 480v OPEN DELTA, UNGROUNDED (\$)
  - 575v - 3ph (\$)  
(INCLUDES NEMA 4 METAL ENCLOSURE WITH 575/460 TRANSFORMER)

- STANDARD FEATURES**
- SIDE COLUMN AND HEAD CONSOLE POWDER COATED RYTEC SILVER.
  - INTELLIGENT LIGHT CURTAIN SYSTEM IN DOOR LINE TO 6'-0" ABOVE FINISHED FLOOR.
  - SMARTSURROUND ADVANCED DETECTION AND ALERT SYSTEM.
  - VARIABLE DOOR OPENING SPEED; UP TO 24"/SEC.
  - PROGRAMMABLE UPPER AND LOWER LIMITS.
  - NEMA 4X SYSTEM 4 CONTROL BOX (8.5"x16.5").
  - BRAKE RELEASE LEVER ON SIDE COLUMN.

- UPGRADE OPTIONS**
- RIGHT HAND DRIVE
  - ROTARY DISCONNECT (\$)
  - BTA4 (BLUETOOTH ACCESS TERMINAL) (\$)  
NIGHT SWITCH FUNCTION: \_\_\_\_\_
  - SELECTOR SWITCH ON CONTROL BOX (\$)  
FUNCTION: \_\_\_\_\_
  - FULL HEIGHT ACTIVE REVERSING EDGE SENSOR (\$)

- PANEL OPTIONS**
- INSULATED SOLID SLATS (\$)  
WINDOWS (\$)  
 1  2  3  4  OTHER \_\_\_\_\_
  - VENTS (\$)  
 1  2  3  4  OTHER \_\_\_\_\_
  - VISION HEIGHT (DIM 'J')  
 33"  39"  51"

UP TO FOUR (4) VISION/VENT SLATS PER GROUP WITH AT LEAST ONE (1) SOLID SLAT SEPARATING GROUPS.  
 OR UP TO SEVEN (7) VISION/VENT SLATS PER GROUP W/ AT LEAST TWO (2) SOLID SLATS SEPARATING GROUPS.

- ACTIVATION OPTIONS (\$)**
- PUSHBUTTON
  - PULL CORDS
  - MOTION DETECTOR
  - PRESENCE DET.
  - MOTION/PRESENCE
  - DUAL LOOP CONTROLLER
  - RADIO CONTROL RCVR (INCLUDE MIN 2 XMIT)
  - 1 BTN TRANSMITTER
  - 2 BTN TRANSMITTER
  - 4 BTN TRANSMITTER

**OPTION NOTES**  
 (\$) = PRICING CHANGE IF NOT INCLUDED IN QUOTE

\*\*\*PLEASE SPECIFY VOLTAGE\*\*\*

**RYTEC CORPORATION**  
 ONE CEDAR PARKWAY, JACKSON, WI 53037-0403

**APPROVAL DRAWING**  
 SPIRAL LP MODEL SSN-LP-L

FOR DOOR WIDTH UP TO 13'-1", HEIGHT UP TO 12'-0"

CUSTOMER: \_\_\_\_\_  
 LOCATION: \_\_\_\_\_

DATE: \_\_\_\_\_  
 DRAWING NO.: 730-01T

REV.: \_\_\_\_\_

**FORMULAS**

F = (B + 30.50); FOR B < 91  
 F = (B + 11.00); FOR B >= 91

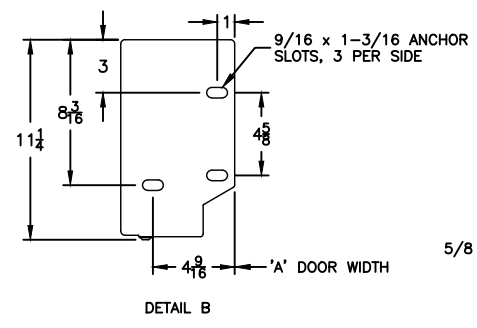
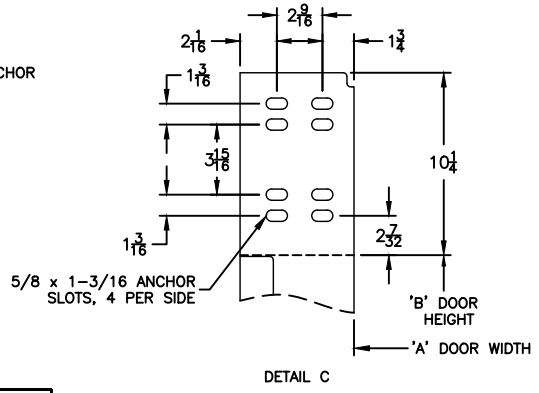
M = (B + 20.00); FOR B < 91  
 M = B; FOR B >= 91

K = NOT REQ'D; FOR B < 99  
 K = 72.00; FOR B >= 99

**FINAL APPROVAL SIGNATURE**

FABRICATION CAN PROCEED ACCORDING TO THE SPECIFICATION SHOWN EXCEPT AS NOTED

APPROVED BY: \_\_\_\_\_  
 PRINT NAME: \_\_\_\_\_  
 SIGNATURE: \_\_\_\_\_  
 DATE: \_\_\_\_\_



REV	DESCRIPTION	DATE	BY