

MILCOPEX: THE FIRST 50 YEARS

On November 5, 1899, six prominent Milwaukee philatelists joined together to form the Milwaukee Philatelic Society. On August 10, 1907, the M.P.S. joined the American Philatelic Society as A.P.S. Chapter 24. More than 100 years and over 2000 meetings later, the M.P.S. is still going strong, with more than 100 members.

Unfortunately, most of the M.P.S. archives and historical records were lost years

ago. This is one exhibitor's attempt to recreate as much of that record as possible

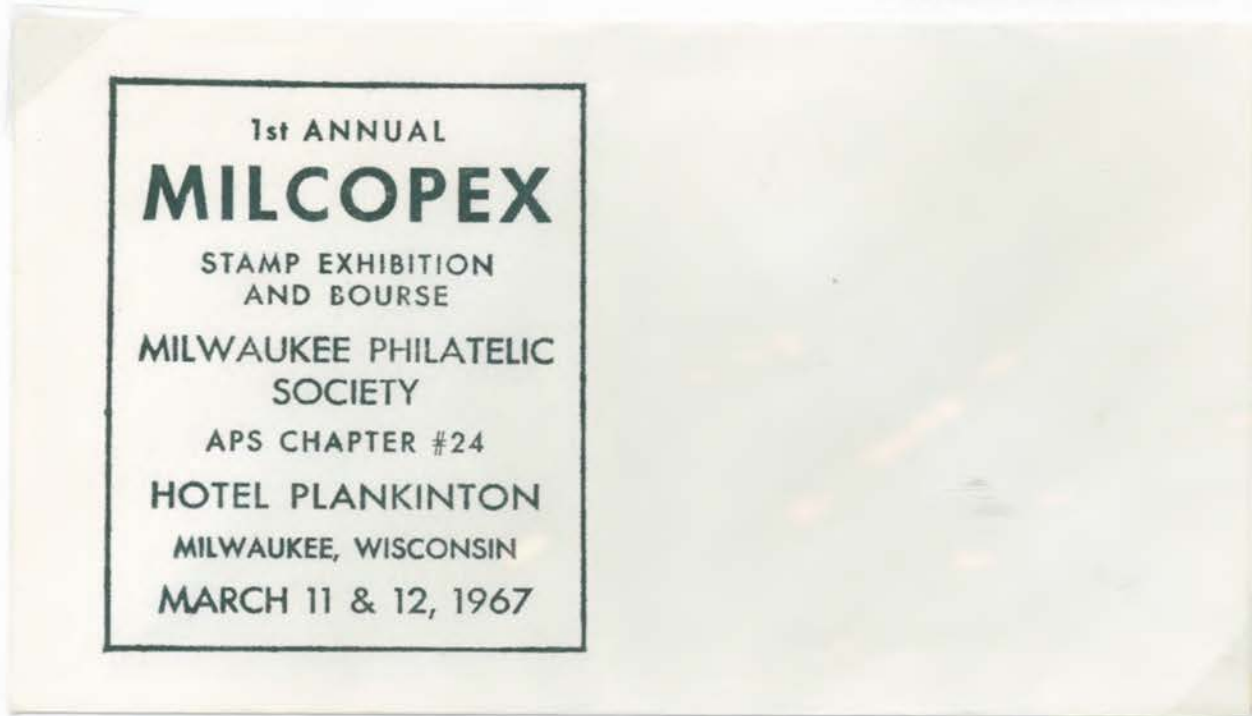
Plan

- I. Milcopex Covers
- II. Milcopex Show Programs
- III. Milcopex Banquet Favors
- IV. Miscellaneous

I. Milcopex Covers

At various times over the years, the Milwaukee Philatelic Society has hosted stamp shows and exhibitions. Every year since 1967, M.P.S. has held the Milcopex stamp exhibition. Milcopex quickly developed into a national level stamp exhibition and American Philatelic Society World Series of Philately show. M.P.S. has produced one or more cacheted covers for each of those shows through 2016.

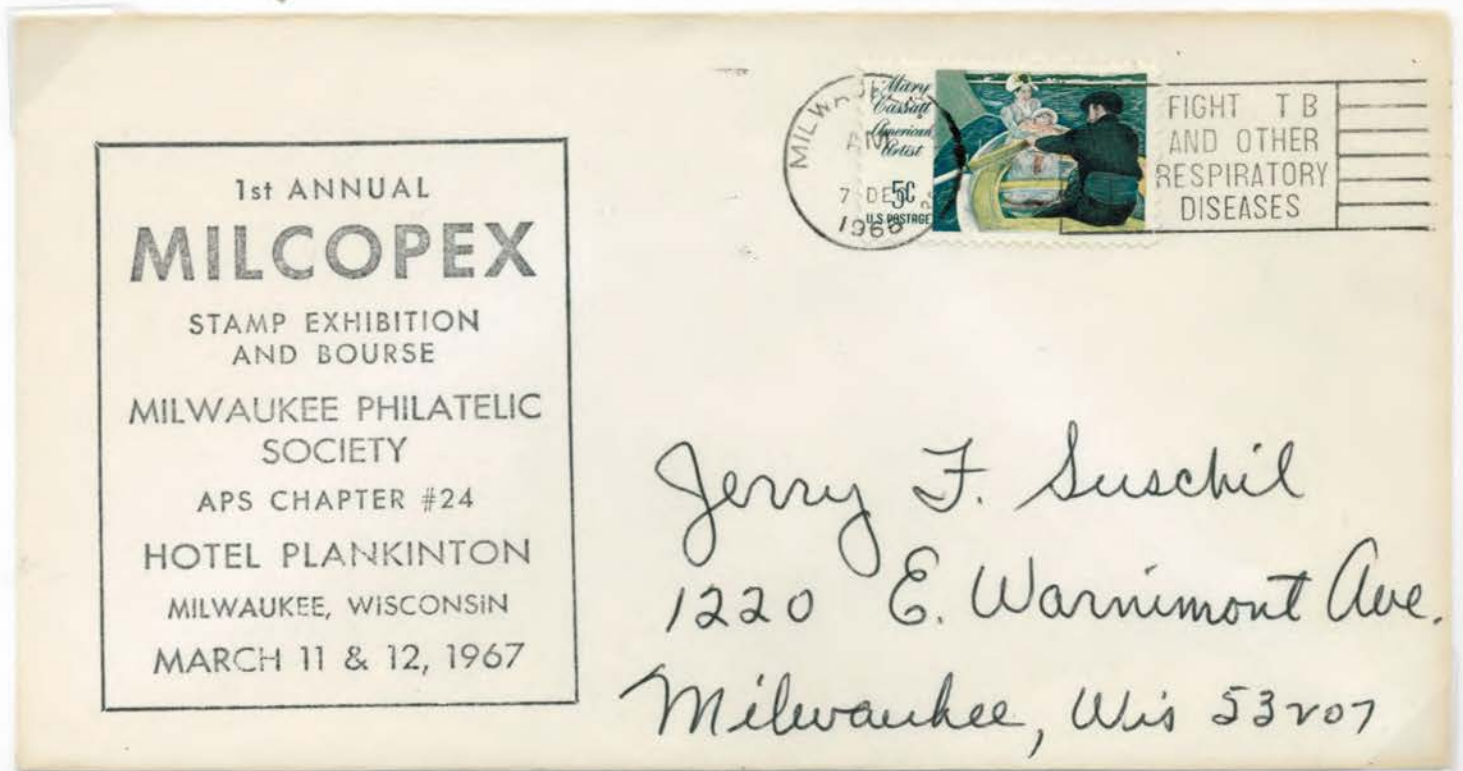
Milcopex 1967 (March 11 & 12) Rubber Stamp Cachet



Unused
Early
Printing
of Cachet

I. Milcopex Covers

**Milcopex 1967 (March 11 & 12)
Rubber Stamp Cachet**



Black Cachet used as Advertisement for Show - December 7, 1966



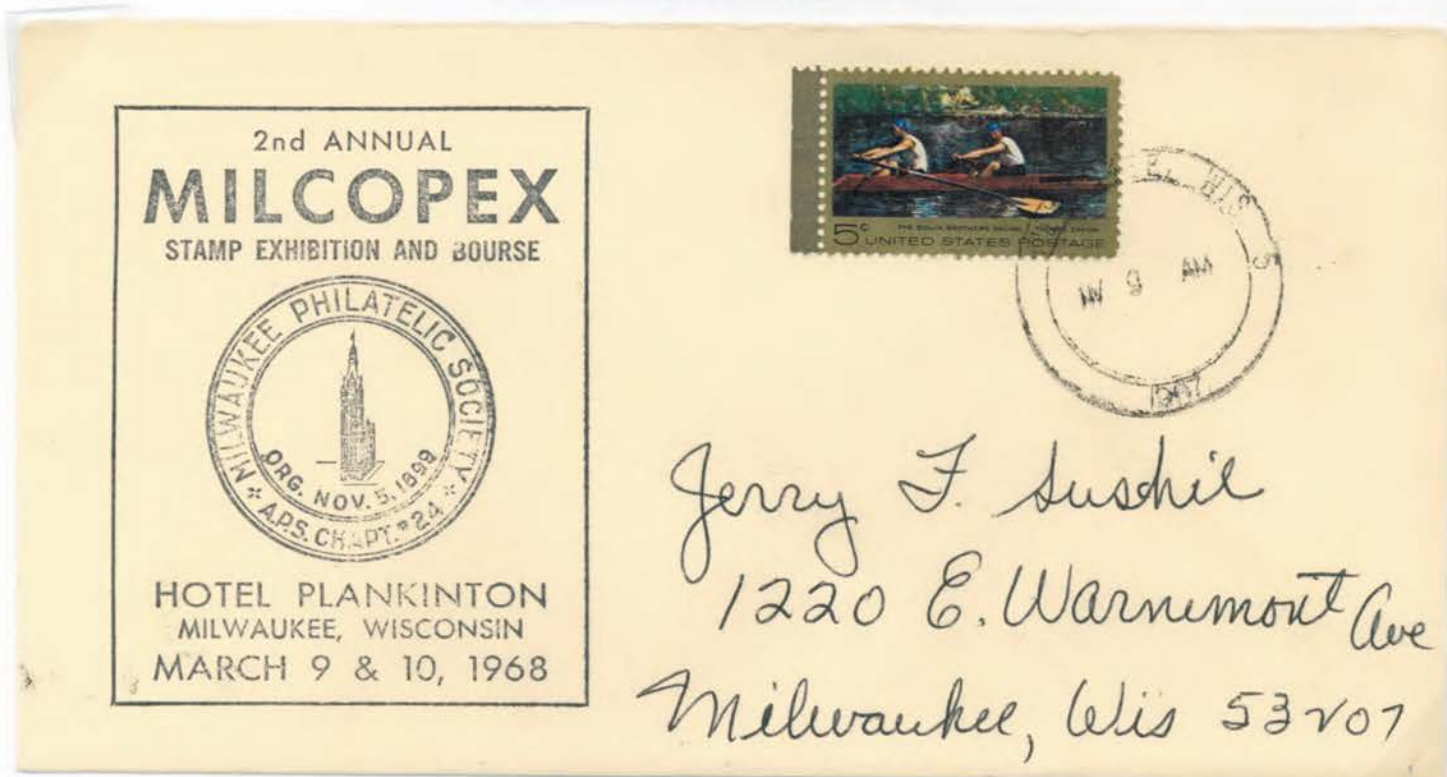
**Green Cachet on Show Souvenir
Milwaukee Philatelic Soc. Conv. Sta. Cancel - March 11, 1967**

I. Milcopex Covers

Milcopex 1968 (March 9 & 10)
Rubber Stamp Cachet



Unused Early Printing of Cachet



Black Cachet as Advertisement for Show
November 9, 1967

I. Milcopex Covers

**Milcopex 1968 (March 9 & 10)
Rubber Stamp Cachet**



**Blue & Black
Show Cachets
March 9, 1968**



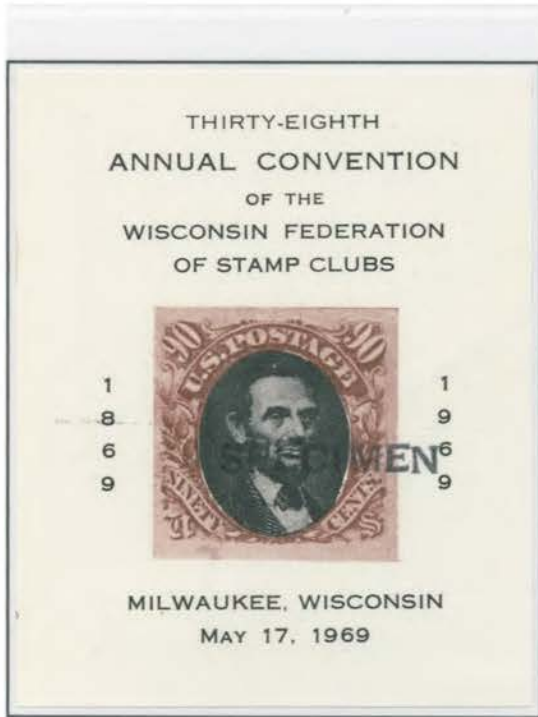
**Blue & Green
Show Cachets
March 10, 1968**



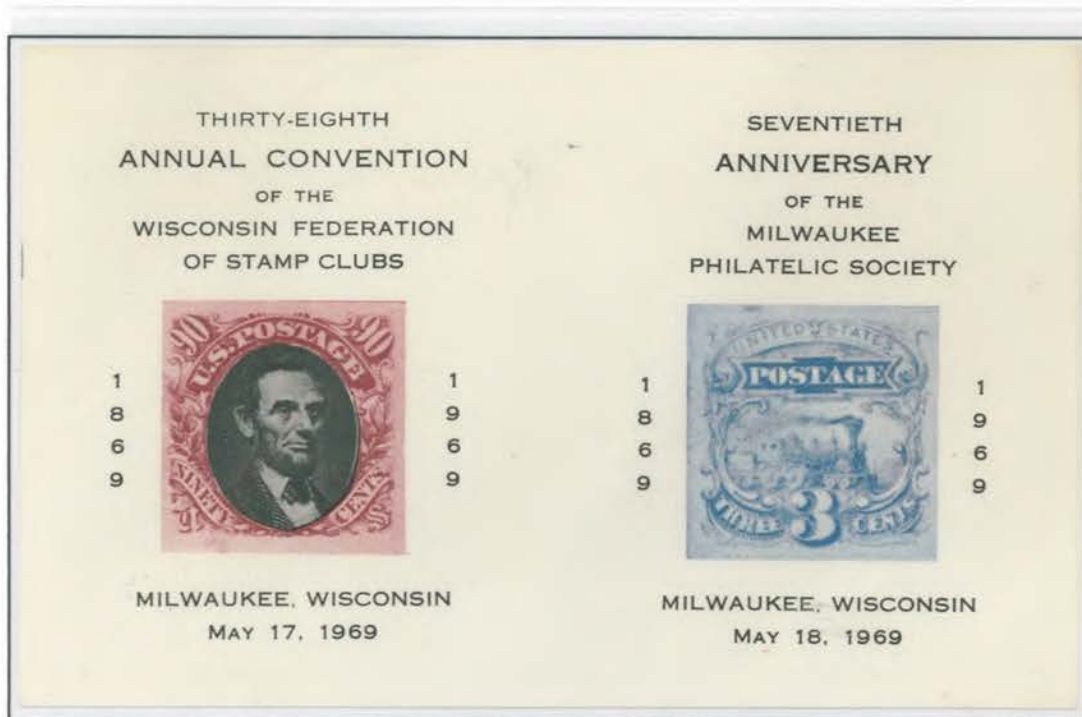
I. Milcopex Covers

Milcopex - Wiscopex 1969 (May 17 & 18)

For the 1969 show, celebrating the 70th anniversary of the M.P.S., it combined Milcopex with Wiscopex, the annual convention and exhibition of the Wisconsin Federation of Stamp Clubs. M.P.S. produced both cacheted covers and matching souvenir sheets to commemorate the show.



Specimens of Souvenir Sheets / Cachets



Souvenir Sheet (Given as Milcopex Banquet Favour)

I. Milcopex Covers

Milcopex - Wiscopex 1969 (May 17 & 18)

1869 PICTORIAL ISSUE

FOR HISTORICAL INTEREST: THE GOLDEN SPIKE was driven at Promontory, Utah on May 10, 1869. The Milwaukee Philatelic society is commemorating the above with a reprint of the 3¢ locomotive and 90¢ Lincoln for the 38th annual state show of the Wisconsin Federation of Stamp Clubs, at the Plankinton House, Milw. Wis. on May 17-18, 1969.

Cachet envelopes & souvenir sheets are 15¢ each or 2-25¢.

Mail orders to: Karl L. Keldenich, P.O. Box 1062 Milwaukee, Wis. 53201. Enclose a 6¢ self-addressed, stamped #10 large envelope for unserviced cachets and SS's.

Stuffer card

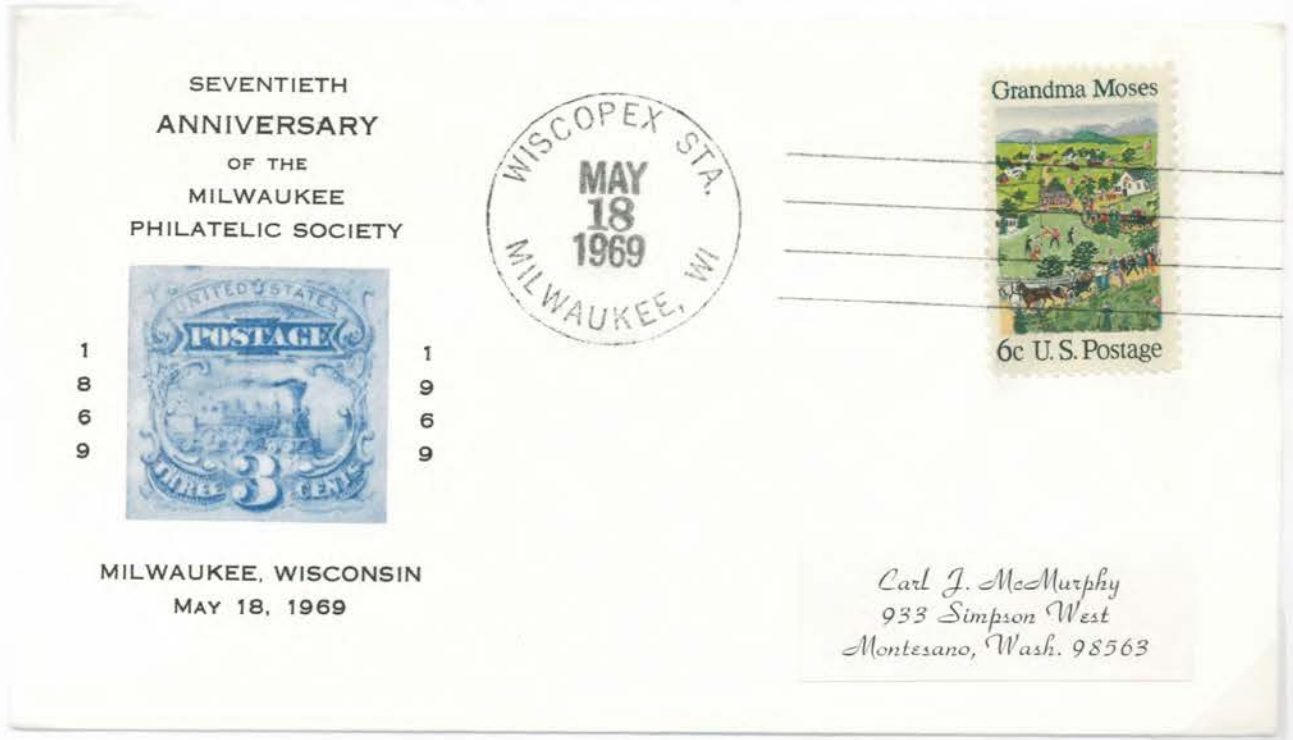


Show Cachet - May 17, 1969

I. Milcopex Covers

Milcopex - Wiscopex 1969 (May 17 & 18)

The cachets went through two printings, with the lighter colors in the first printing.



M.P.S. Cachet - May 18, 1969
First Printing



Second Printing

I. Milcopex Covers

Milcopex 1970 (March 7 & 8)
 Show Theme: 25th Anniversary of U.N.

MILCOPEX 70
 SALUTES
 25TH ANNIVERSARY
 OF THE
 UNITED NATIONS



1
9
4
5

MARCH 7 & 8,
 MILWAUKEE
 PHILATELIC SOC

MILCOPEX 70
 SALUTES
 25TH ANNIVERSARY
 OF THE
 UNITED NATIONS



1
9
4
5



1
9
7
0

MARCH 7 & 8, 1970
 MILWAUKEE
 PHILATELIC SOCIETY

Show Cachets
 Mar. 7-8, 1970

ERROR: 25 cent UN stamp missing in cachet

MILCOPEX 70
 SALUTES
 25TH ANNIVERSARY
 OF THE
 UNITED NATIONS



1
9
4
5

1
9
7
0

Error:
 UN stamp
 omitted

MARCH 7 & 8, 1970
 MILWAUKEE
 PHILATELIC SOCIETY

Roger J. Szymanski
 3357 S. 10th St.
 Milwaukee, Wisc. 53215

I. Milcopex Covers

Milcopex 1971 (March 6 & 7)
Show Theme: Europa

The Show Cachet shows stylized flags of Netherlands, France, Germany, Italy, Luxembourg, and Belgium, founding members of the European Coal and Steel Community, forerunner of the European Economic Community.



Show Cachet - March 6, 1971



Show Cachet - March 7, 1971

I. Milcopex Covers

Milcopex 1972 (March 4 & 5)

Cachet designed by K. Birkhain



March 4, 1972



Cachet Also known in Brown - See FDCs - and Violet

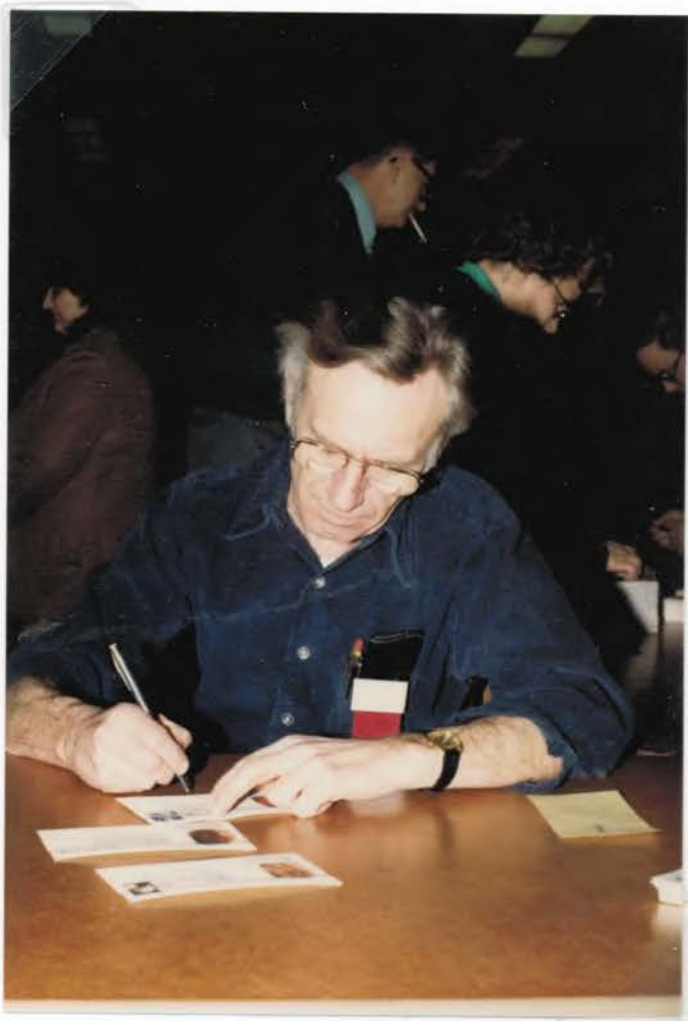


March 5, 1972 in Blue and Green

ROGER J. SZYMANSKI
3357 S. 10th Street
Milwaukee, Wis. 53215

I. Milcopex Covers

Klaus Birkhain



Klaus Birkhain signing Milcopex show covers

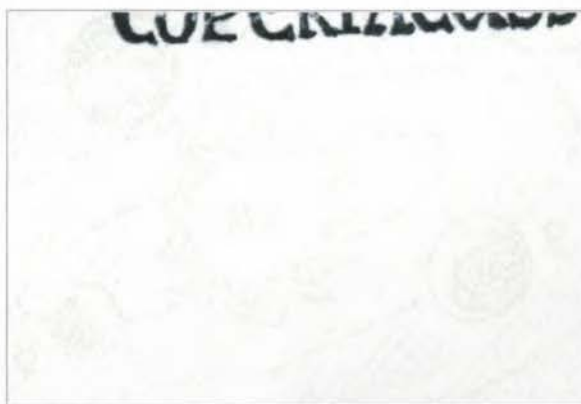
For many years, Klaus Birkhain was *the* name in M.P.S. cachets and pictorial cancellations.

A German immigrant, Birkhain was employed as a graphic artist by the Milwaukee Journal Company. He also used his talents to design cachets, cancellations, and other materials for Milwaukee stamp clubs from 1971 through 1993.

Milcopex 1973 (March 3 & 4)

First use of pictorial cancellation

Cachet & Cancel design: K. Birkhain



First use of BURELAGE - light background design with space vehicles and stylized modern & ancient solar system concepts

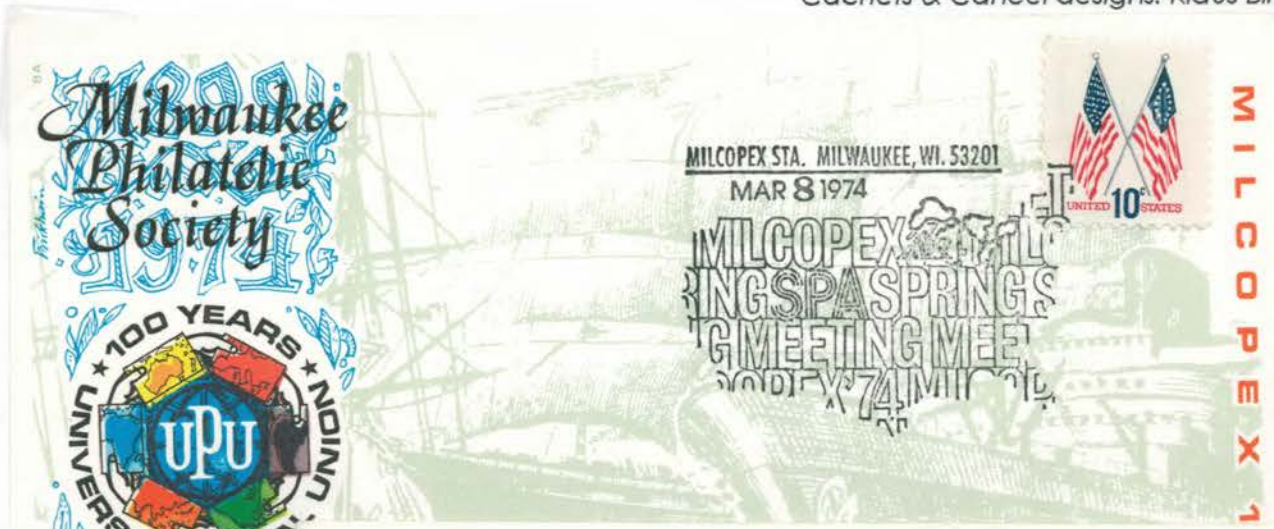


I. Milcopex Covers

Milcopex 1974 (March 8 - 10)

Four color offset w/ one color engraved

Cachets & Cancel designs: Klaus Birkhain



**Soc. of Philatelic Americans Day
March 8**

*Burelage: UPU
Int'l Sea Postal
Communications*



**Universal Postal Union
Day, March 9**

*Burelage: UPU
Headquarters,
Bern, Switz.*



**M.P.S. Day
March 10, 1974
(75th Anniversary)**

*Burelage: Int'l
Air Postal
Communications*

I. Milcopex Covers

Milcopex 1976 (March 5-7)

Cachets and Cancellation
designed by K. Birkhain



Honoring
Revolutionary
War Heroes from
Other Lands

Casimir Pulaski

Royal Swedish &
U.N. Post Offices
Show Stamps



Middle: Friedrich
von Steuben

Bottom: Marquis
de Lafayette

Signed by
Designer
Klaus Birkhain



Klaus Birkhain

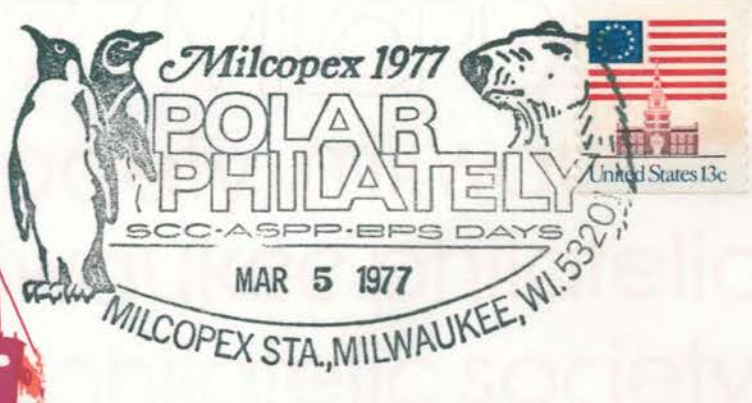
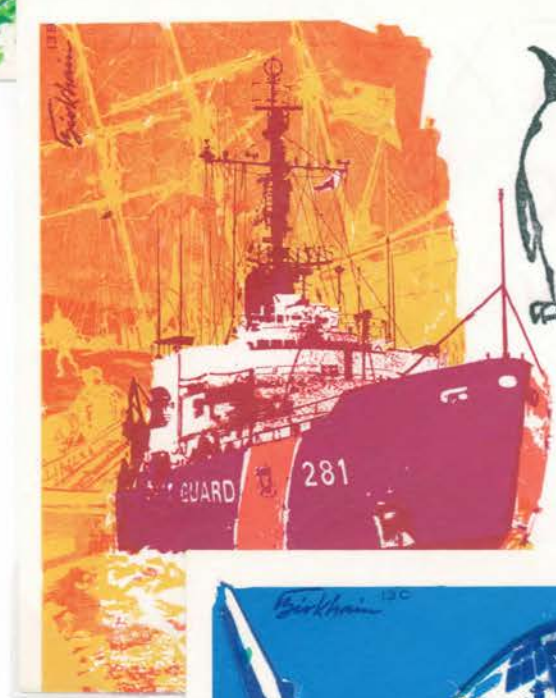
I. Milcopex Covers

Milcopex 1977 (March 4-6)

Cachets and Cancellation
designed by K. Birkhain

Convention of
American Society of
Polar Philatelists

Also, Scandinavian
Collectors Club
(SCC) & Belgium
Philatelic Society
(BPS), all reflected in
cancellation

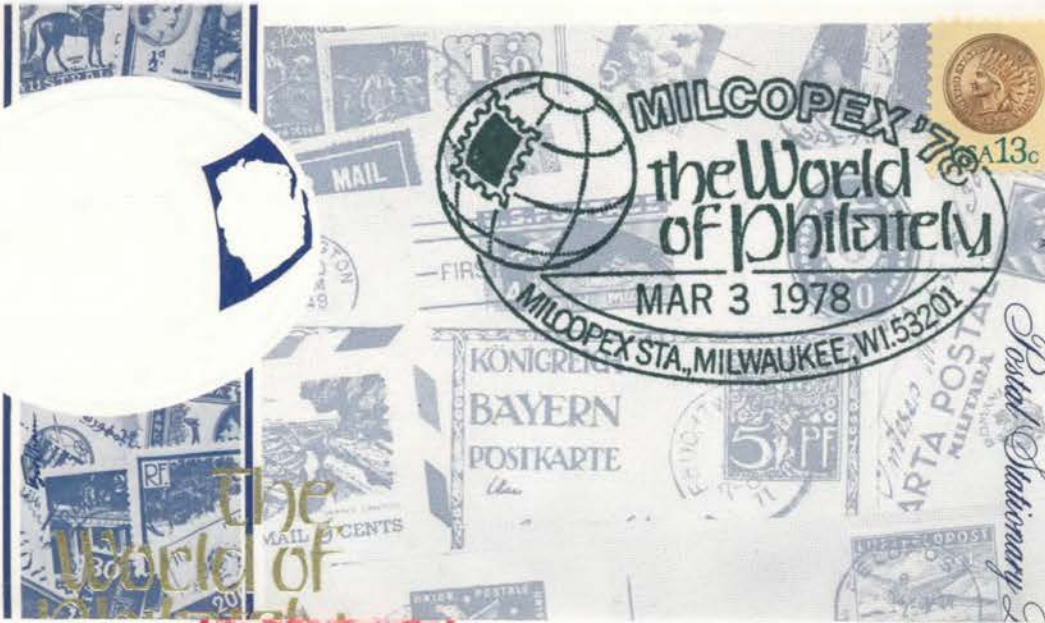


I. Milcopex Covers

Milcopex 1978 (March 3-5)

Cachets and Cancellation design: Klaus Birkhain
First M.P.S. Embossed cover

MILWAUKEE PHILATELIC SOCIETY



Convention of U.S. Stationery Society, American Helvetia Philatelic Society, and the Germany Philatelic Society - Chapter 5.

Postal Stationery Day - March 3, 1978

MILWAUKEE PHILATELIC SOCIETY

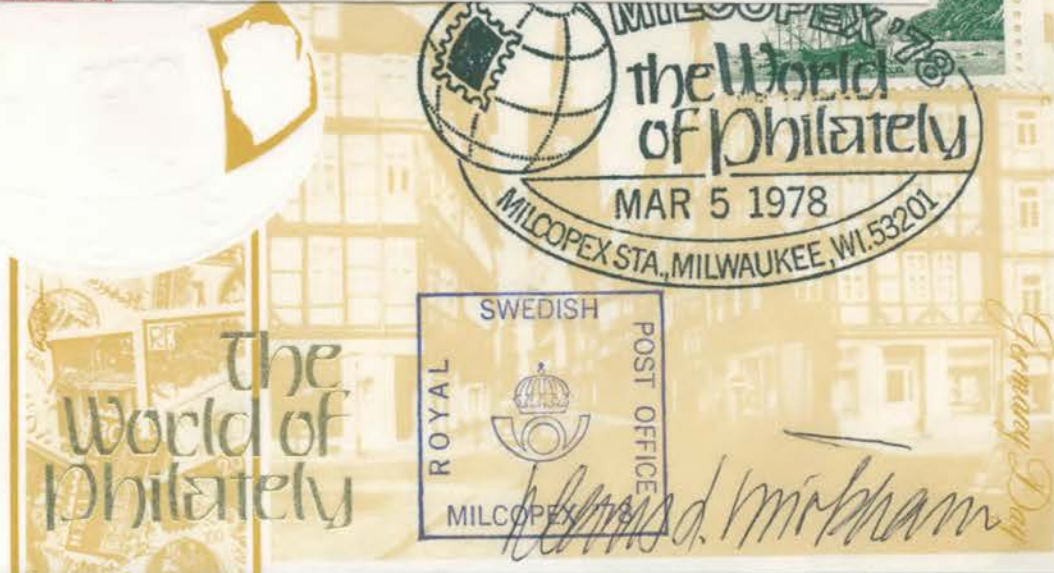


Helvetia Day ↑
March 4, 1978

Germany Day
March 5, 1978

Signed by
Designer

MILWAUKEE PHILATELIC SOCIETY

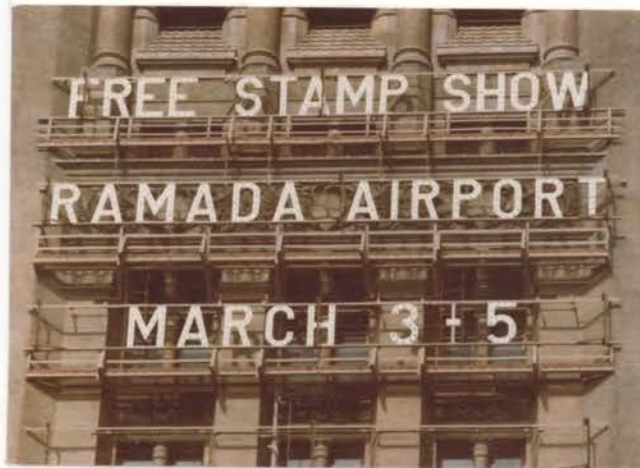


13c USA

I. Milcopex Covers

Milcopex 1978 (March 3-5)

Photo cachets of show advertizing on Milwaukee City Hall.



I. Milcopex Covers

Milcopex 1979 (March 2-4)

Theme: Aerospace: Past, Present and Future

Cachets and Cancellation designed by K. Birkhain



1899 MILWAUKEE PHILATELIC SOCIETY

100th Birthday of Milwaukee Gen. Billy Mitchell, "Father" of U.S. Air Force - Mar. 2, 1979



1899 MILWAUKEE PHILATELIC SOCIETY

10th Anniversary - ↑
First Man on the Moon
Mar. 3, 1979

Space Shuttle -
First Flight due
later in 1979
Mar. 4, 1979

Unofficial FDC
Einstein stamp



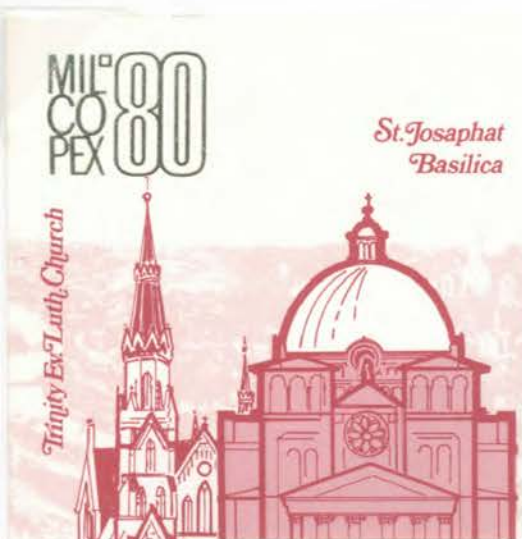
1899 MILWAUKEE PHILATELIC SOCIETY 1979

I. Milcopex Covers

Milcopex 1980 (Feb. 29 - March 2)

Theme: Historic Preservation

Cachets and Cancellation design: K. Birkhain



St. Josaphat Basilica



Milwaukee Philatelic Society

Black Cancel (Pabst Theatre) and Cachets illustrate Milwaukee landmarks.

Trinity Evangelical Lutheran Church & St. Josaphat Basilica

Burelage: Milwaukee in 1853

Feb. 29, 1980



Mackie Building

Mitchell Building



Milwaukee Philatelic Society

Mitchell & Mackie Buildings. Burelage: Milwaukee in 1878 Mar. 1, 1980

North Point Water Tower & City Hall Burelage: Milwaukee circa 1895 Mar. 2, 1980

Signed by Designer



Milwaukee City Hall

North Point Water Tower



Milwaukee Philatelic Society

HISTORIC PRESERVATION

Klaus Birkhain

I. Milcopex Covers

Milcopex 1980 (Feb. 29 - March 2)
Theme: Historic Preservation



Show cover & cancellation - Mar. 2, 1980 - Block of four



Photo Cachet of show volunteers
Brown show cancel - Mar. 2, 1980
Swedish Post Office show handstamp

I. Milcopex Covers

Milcopex 1981 (Feb. 27 - March 1)
Theme: British Philately
 Cachet and Cancellation design: K. Birkhain

MILCOPEX 1981

Milwaukee Philatelic Society



BRITISH
 PHILATELY



First use of hot-rolled gold and silver in cachet.

Red Cancel - Feb. 27, 1981

Milwaukee Philatelic Society



BRITISH
 PHILATELY



Blue Cancel ↑
 Feb. 28, 1981

Green Cancel
 March 1, 1981

Note ironic use of 15-star/15-stripe U.S. Flag current during War of 1812

Milwaukee Philatelic Society



BRITISH
 PHILATELY



I. Milcopex Covers

Milcopex 1981 (Feb. 27 - March 1)

MILCOPEX 1981

Milwaukee Philatelic Society



Show Cover with
Black cancel -
Feb. 27, 1981

Hand painted
cachet by Don
A. Russell (later
to produce his
own FDCs)
Black cancel
Feb. 27, 1981



Mrs. Helen McGinley
mar St.
CA 92011

Milwaukee Philatelic Society

MILCOPEX 1981



Penny Black - Milcopex 1981 Souvenir Sheet
Designed by Klaus Birkhain

I. Milcopex Covers

Milcopex 1982 (March 5-7)

Theme: Philatelica Germania (German Philately)

Cachet and Cancellation designed by K. Birkhain



Cancel depicts German Mail Coach; Cachet shows "Germania" as depicted on German definitive series, 1900 - 1922

Black Cancel - March 5, 1982
M.P.S. Seal



10¢ postage on reverse

Red Cancel - March 6, 1982



Yellow Cancel March 7, 1982 →

Gold Cancel March 7, 1982

M.P.S. Seal

Signed by Designer



Philatelica Germania

Klaus J. Birkhain

I. Milcopex Covers

Milcopex 1983 (March 4-6)
 Theme: Aviation in Philately
 Cachet and Cancellation design: K. Birkhain

Milwaukee Philatelic Society



Cancel depicts German Mail Coach; Cachet shows Inverted Jenny; Burelage shows two airmail stamps, Scott C10 & C74

Black Cancel - March 4, 1983

Milwaukee Philatelic Society



Milwaukee Philatelic Society

Red Cancel ↑
 March 5, 1983

Blue Cancel
 March 6, 1983



Milwaukee Philatelic Society

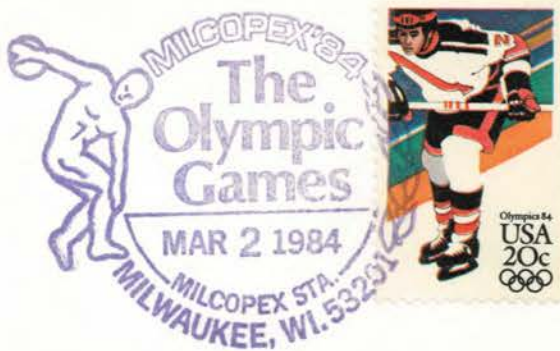
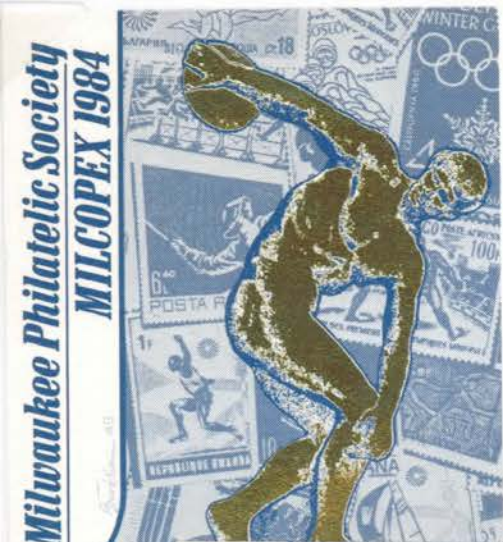
46
 Birkhain

I. Milcopex Covers

Milcopex 1984 (March 2-4)

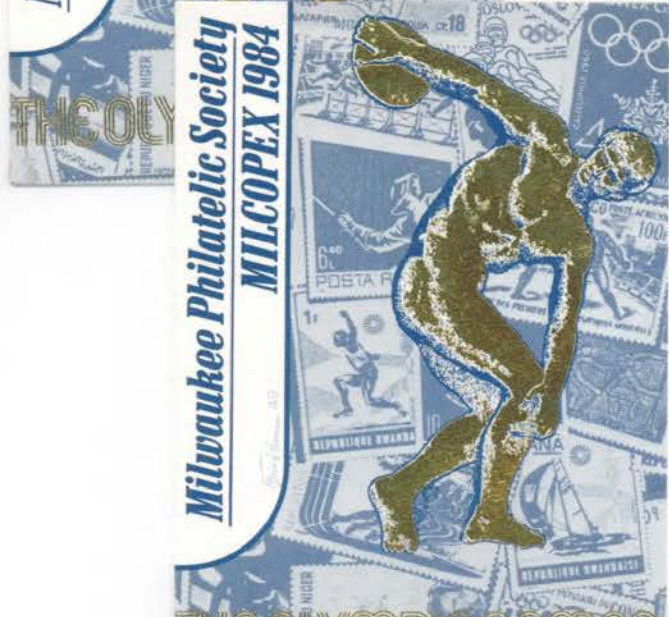
Theme: The Olympic Games

Cachet and Cancellation design: K. Birkhain

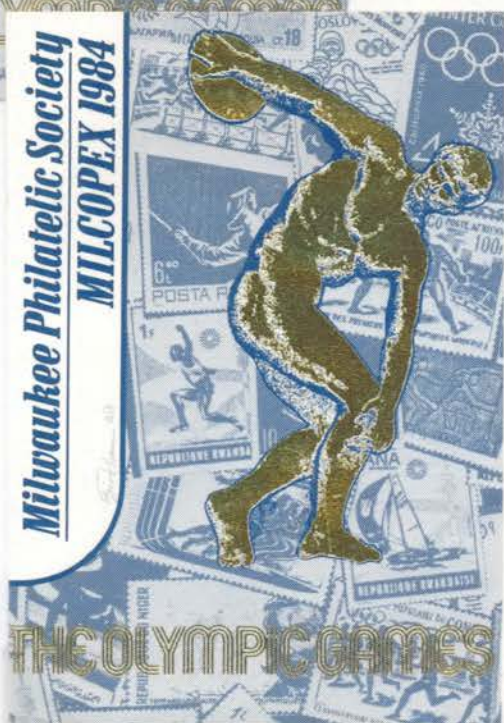


Cancel and Cancel depict Myron's Discobolus, the Disc Thrower, circa 460-450 B.C.E.

Violet Cancel - March 2, 1984



Red Cancel ↑
March 3, 1984



Blue Cancel
March 4, 1984

Signed by Designer

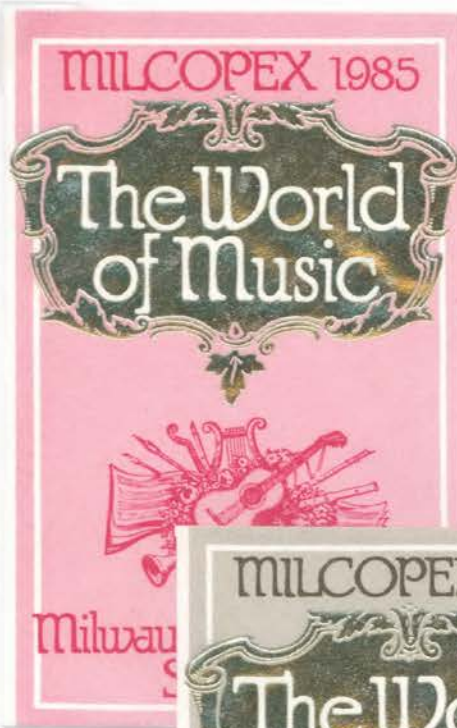
Klaus d. Birkhain

I. Milcopex Covers

Milcopex 1985 (March 1-3)

Theme: The World of Music

Cachets and Cancellation design: K. Birkhain



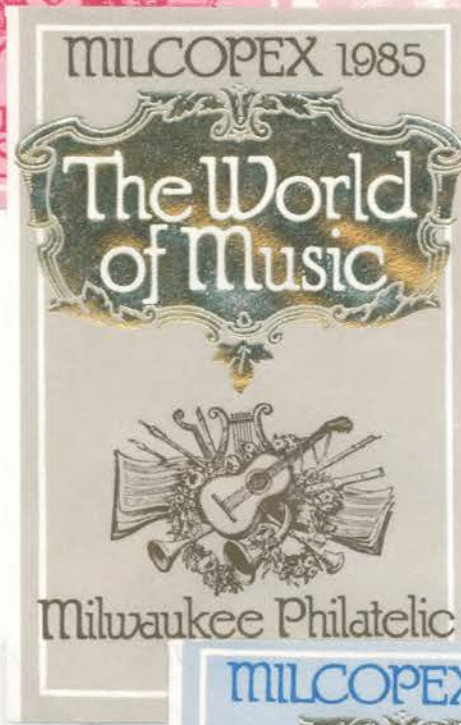
JOHANN
SEBASTIAN
BACH

JEROME KERN



Burelage: Johann Sebastian Bach

Red Cancel,
March 1, 1980



GEORGE
FREDERICK
HANDEL

JEROME KERN

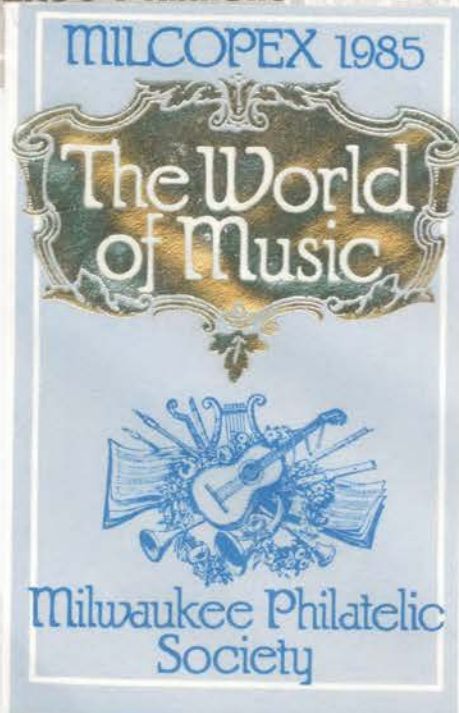


Milwaukee Philatelic

1685
1759

Burelage: George
Frederick Handel

Brown Cancel
March 2, 1985



Igor Stravinsky

JOHN McCORMACK



Burelage: Folk
Music

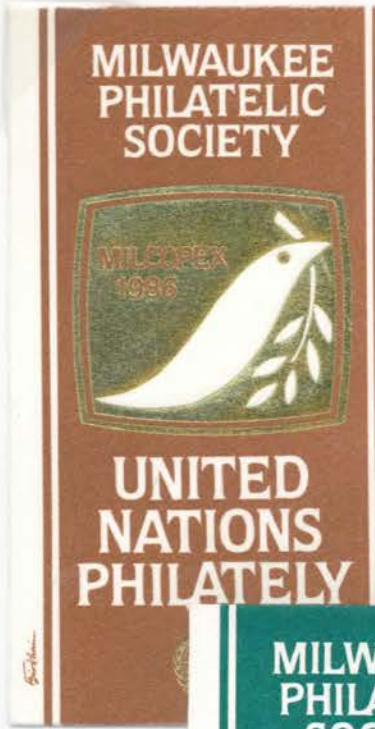
Blue Cancel
March 3, 1985

Milwaukee Philatelic
Society

I. Milcopex Covers

Milcopex 1986 (Feb. 28 - March 2)

Theme: United Nations Philately
Cachets and Cancellation design: K. Birkhain

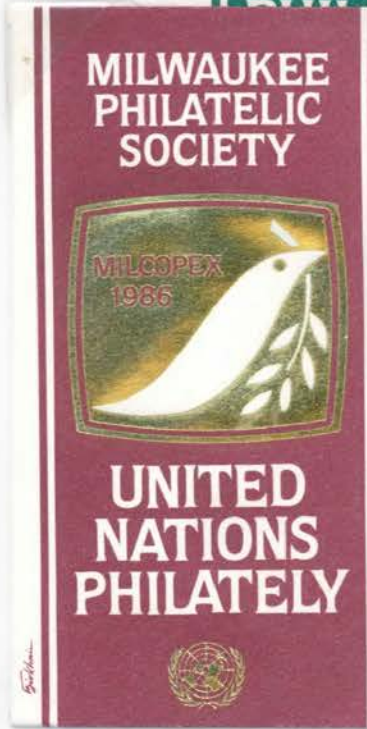
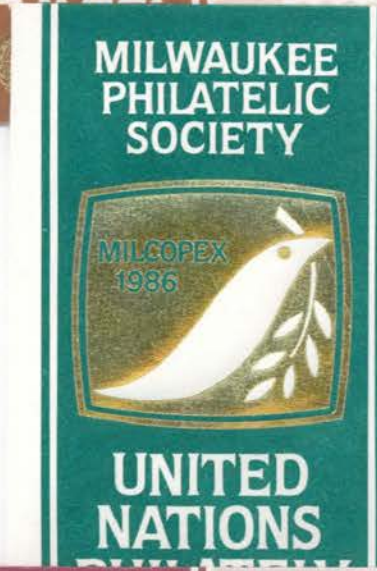


Cachets and Cancel depict Dove of Peace

Feb. 28, 1986

Burelage: U.N. Africa in Crisis stamp

Combo cover with U.N. First Day cancel of Africa in Crisis stamp & Chicago Philatelic Fair '86 handstamp



Burelage: U.N. Human Rights Stamp

March 1, 1986

Burelage: U.N. Int'l Peace Keeping Stamp

March 2, 1986

I. Milcopex Covers

Milcopex 1987 (March 6-8)

Theme: 200th Anniversary of U.S. Constitution

Cachet and Cancellation design: K. Birkhain



I. Milcopex Covers

Milcopex 1988 (March 4-6)

Theme: Transportation in Philately
Cachets and Cancellation design: K. Birkhain

Milwaukee Philatelic Society



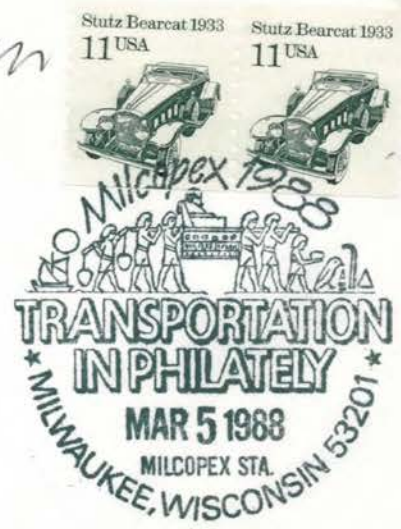
Cachet: Concord Aircraft, High-Speed Rail, and Hydrofoil Boat

All signed by designer

Burelage: City and Mail Coach

March 4, 1988

Milwaukee Philatelic Society

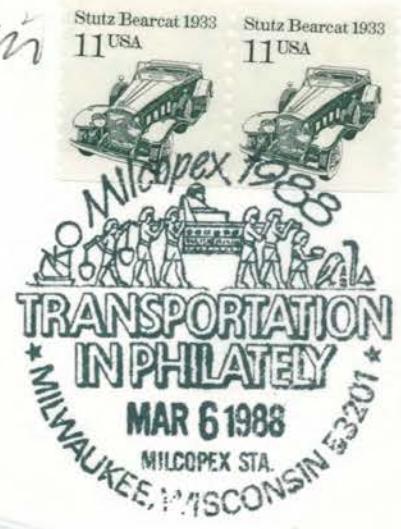


Burelage: Ship ↑
March 5, 1988

Burelage: First manned balloon flight in Montgolfier balloon, Nov. 21, 1783; Zeppelin

March 6, 1988

Milwaukee Philatelic Society



TRANSPORTATION IN PHILATELY

Birkhain

I. Milcopex Covers

Milcopex 1989 (March 3-5)

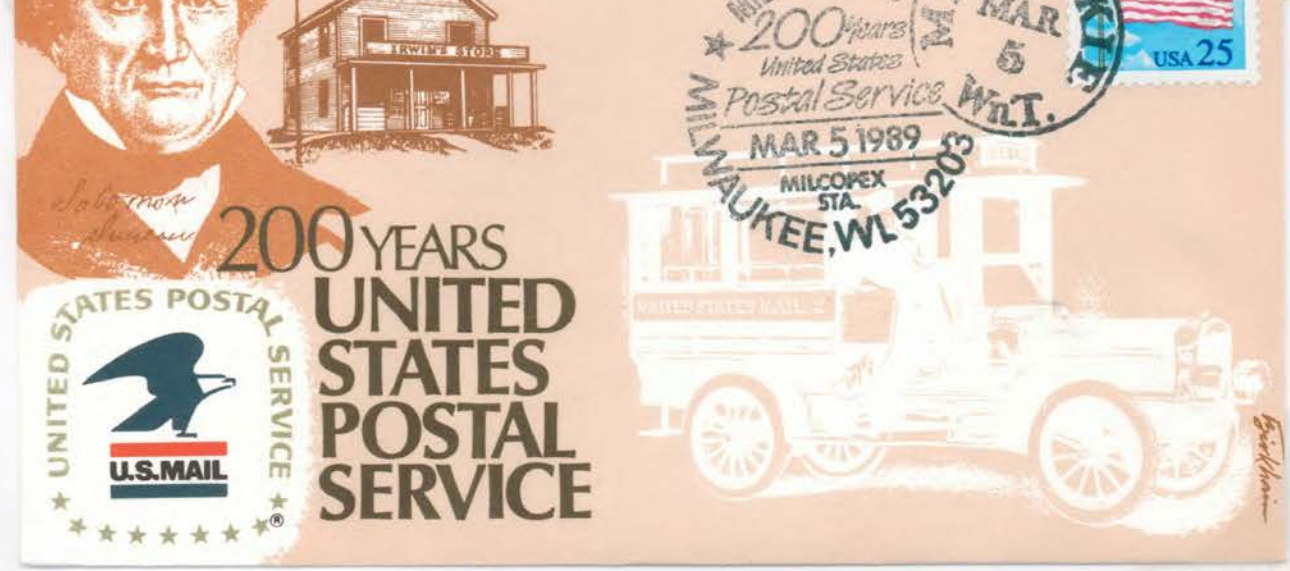
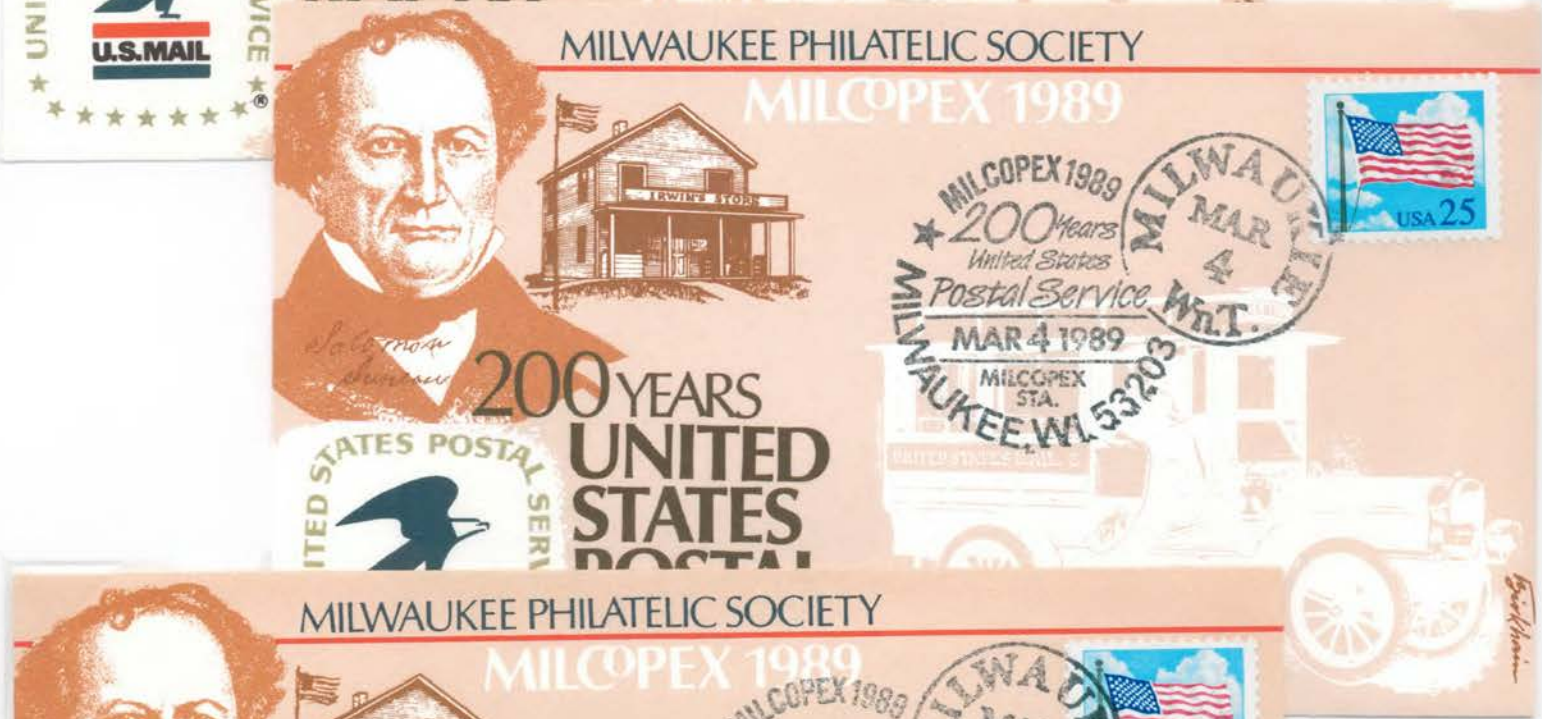
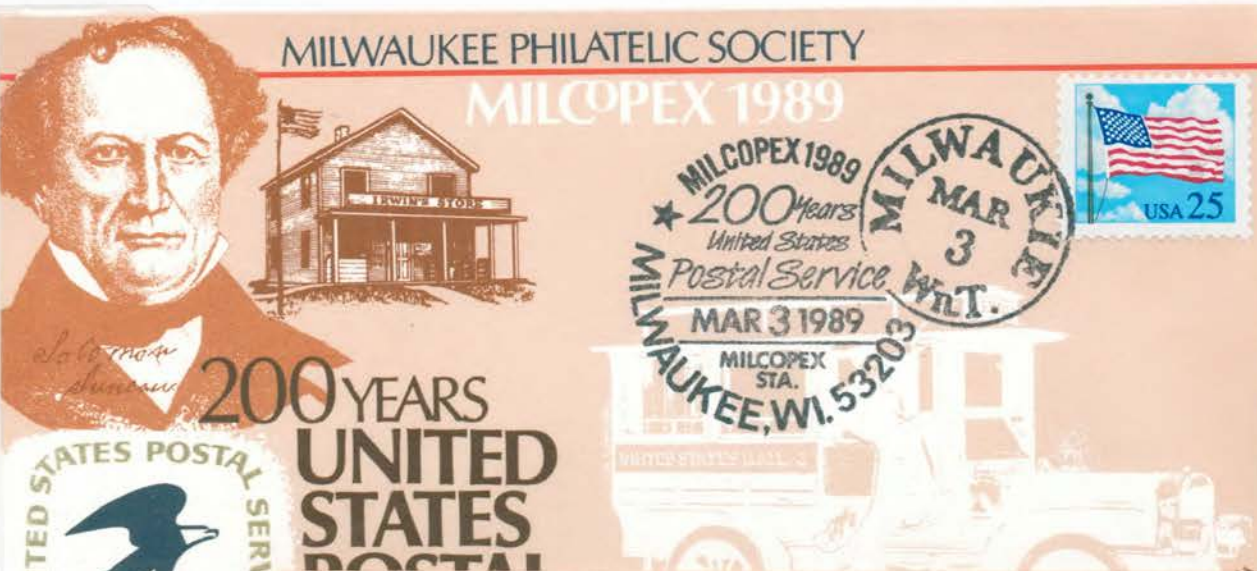
Theme: 200 Years of U.S. Postal System

Cachets and Cancellation design: K. Birkhain

Cachet: Solomon Juneau (First Milwaukee postmaster) & early store-post office

Burelage: Early Mail Truck

Cancel: Replica Milwaukie, Wis. Territory Circular Date Stamp



I. Milcopex Covers

Milcopex 1990 (March 2-4)

Theme: Art on Stamps

Cachets and Cancellation design: K. Birkhain

MILWAUKEE PHILATELIC SOCIETY



Cachet: Peter Paul Rubens & Vincent Van Gogh



MILWAUKEE PHILATELIC SOCIETY



MILWAUKEE PHILATELIC SOCIETY



I. Milcopex Covers

Milcopex 1991 (March 1-3)

Theme: Circus & P.T. Barnum

Cachet and Cancellation design: K. Birkhain

Milwaukee Philatelic Society



P.T. BARNUM



Cachet: Phineas Taylor Barnum - 1810 - 1891

Burelage: Circus tent and grounds

MILCOPEX

Milwaukee Philatelic Society



P.T. BARNUM

This U.S. stamp, along with 25¢ of additional U.S. postage, is equivalent to the 4¢ stamp rate.



Milwaukee Philatelic Society



P.T. BARNUM

MILCOPEX 1991



I. Milcopex Covers

Milcopex 1992 (March 6-8)

Theme: Columbus and the Discovery of America

Cachet and Cancellation design: K. Birkhain



Cachet:
Christopher Columbus, corn & tobacco

Burelage and Cancel: Nina, Pinta & Santa Maria

I. Milcopex Covers

Milcopex 1993 (March 5-7)

Theme: German Philately

Cachets and Cancellation design: K. Birkhain

Milwaukee Philatelic Society

MILCOPEX 1993



Cachet: German Stamps Post Horn

Burelage: Mail Coach



Milwaukee Philatelic Society

German **P**

MILCOPEX 1993



Milwaukee Philatelic Society

MILCOPEX 1993



German Philately

I. Milcopex Covers

Milcopex 1994 (March 4-6)
Theme: 70th Anniversary of First Continuous
Transcontinental Night Flight

MILCOPEX 1994 - AMERICAN AIR MAIL SOCIETY
70th ANNIVERSARY FIRST CONTINUOUS
TRANSCONTINENTAL NIGHT FLIGHT 1924



American Airmail
Society Convention

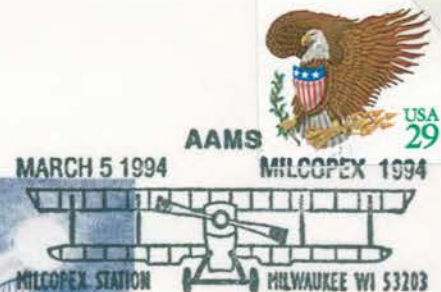
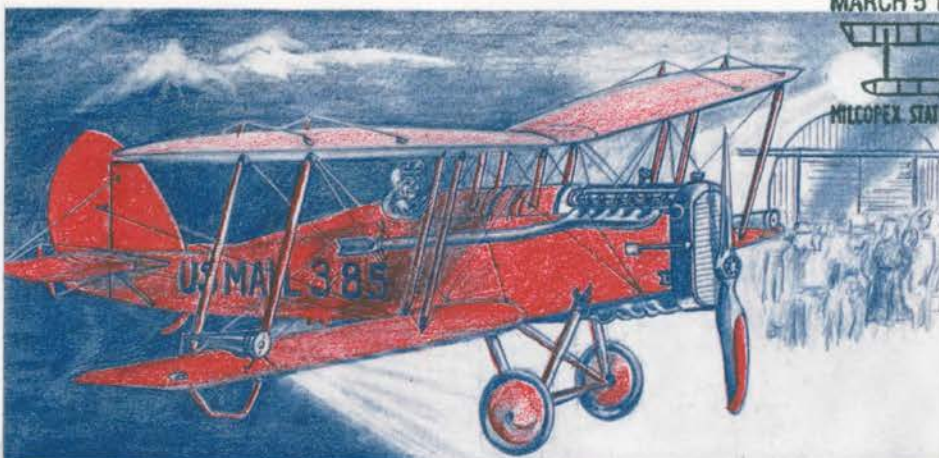
Cachet: de
Havilland-4B
biplane, U.S. Mail
No. 385 (an odd
choice given that pilot
Charlie Ames died
when this plane
crashed into the
mountains outside
Bellefonte, PA on
October 1, 1925).

MILWAUK

MILCOPEX 1994 - AMERICAN AIR MAIL SOCIETY
70th ANNIVERSARY FIRST CONTINUOUS
TRANSCONTINENTAL NIGHT FLIGHT 1924



MILCOPEX 1994 - AMERICAN AIR MAIL SOCIETY
MILWA 70th ANNIVERSARY FIRST CONTINUOUS
TRANSCONTINENTAL NIGHT FLIGHT 1924



MILWAUKEE PHILATELIC SOCIETY

I. Milcopex Covers

**Milcopex 1995 (Sept. 22-24)
National Convention of American
Society of Polar Philatelists**

MILCOPEX 1995

AMERICAN SOCIETY OF POLAR PHILATELISTS
Sir Shackleton's Antarctic
Expedition 1914-1916



MILWAUK

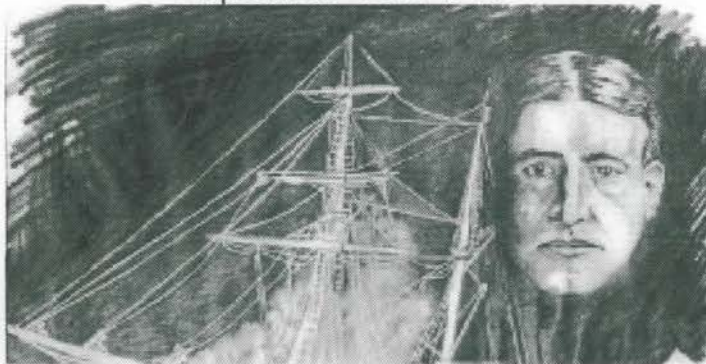


Cachet design:
Jesse
Lewandowski

Cachet: Sir Ernest Henry Shackleton and his ship, the Endurance, trapped in pack ice, foiling his Imperial Trans-Antarctic Expedition in 1915

MILCOPEX 1995

AMERICAN SOCIETY OF POLAR PHILATELISTS
Sir Shackleton's Antarctic
Expedition 1914-1916



MILCOPEX 1995

AMERICAN SOCIETY OF POLAR PHILATELISTS
Sir Shackleton's Antarctic
Expedition 1914-1916



MILWAUKEE PHILATELIC SOCIETY



I. Milcopex Covers

Milcopex 1996 (Sept. 20-22)
National Convention of The Society
for Czechoslovak Philately, Inc.

Milwaukee Philatelic Society
MILCOPEX 1996



Cachet design:
Jesse Lewandowski

Cachet: Jolly the
Clown (Art Petri,
1927 - 2009)

Signed by
Jolly/Petri



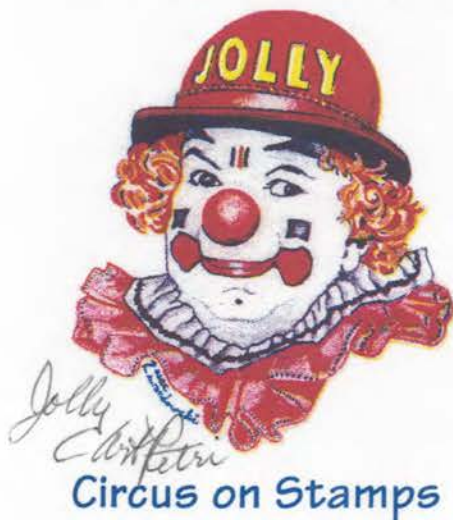
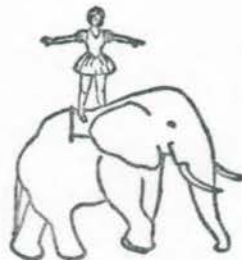
Circ

Milwaukee Philatelic Society
MILCOPEX 1996



Cii

Milwaukee Philatelic Society
MILCOPEX 1996



I. Milcopex Covers

Milcopex 1997 (Sept. 19-21)
Theme: Postal Stationery
Cachet design: Jesse Lewandowski

MILCOPEX 1997



MILWAUKEE PHILATELIC SOCIETY

Convention of
United Postal
Stationery
Society

MILCOPEX 1997

Milv



MILWAUKEE PHILATELIC SOCIETY

MILCOPEX 1997

N



MILWAUKEE PHILATELIC SOCIETY

Milwaukee Philatelic Society

I. Milcopex Covers

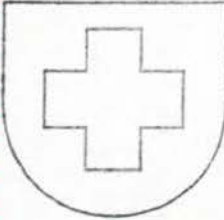
Milcopex 1998 (Sept. 18-20)
Theme: Helvetia '98

MILWAUKEE PHILATELIC SOCIETY

MILCOPEX 1998
HELVETIA '98



17th Century Swiss Courier



Convention of
American
Helvetia
Philatelic
Society

Cachet: 17th
Century Swiss
Courier

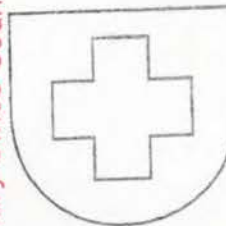
Cancel: Greek
Cross from
Swiss Flag

MILWAUKEE PHILATELIC SOCIETY

MILCOPEX 1998
HELVETIA '98



17th Century Swiss Courier

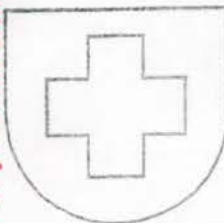


MILWAUKEE PHILATELIC SOCIETY

MILCOPEX 1998
HELVETIA '98

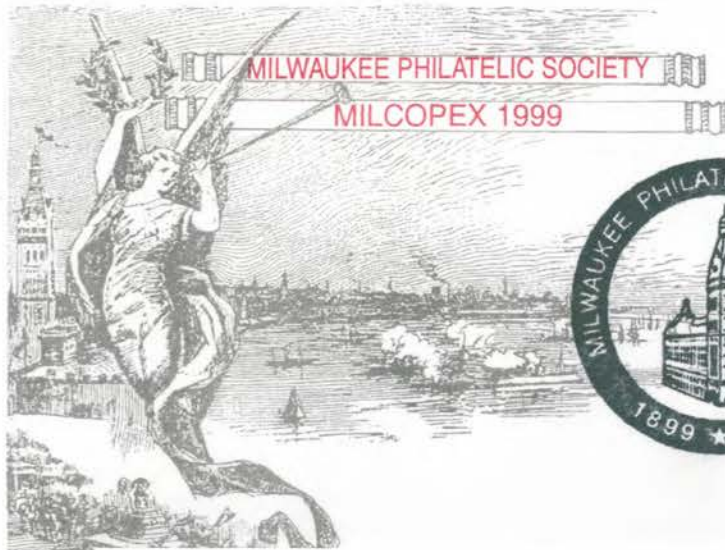


17th Century Swiss Courier



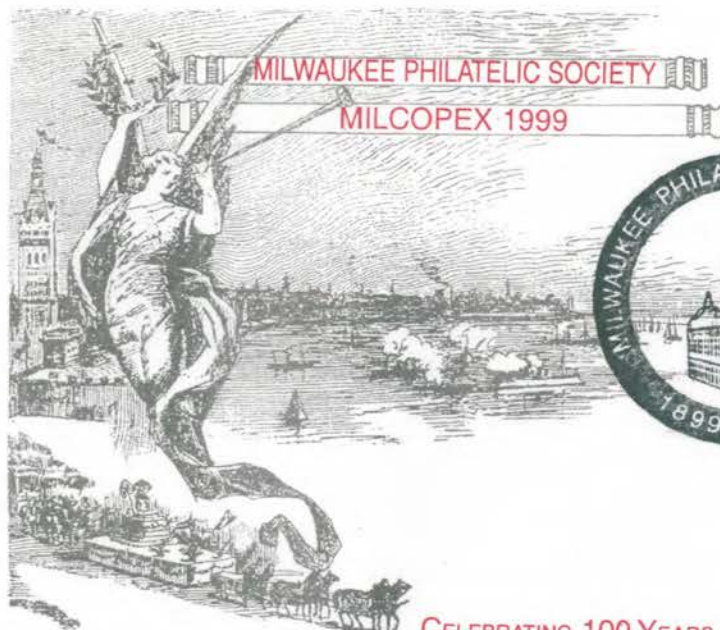
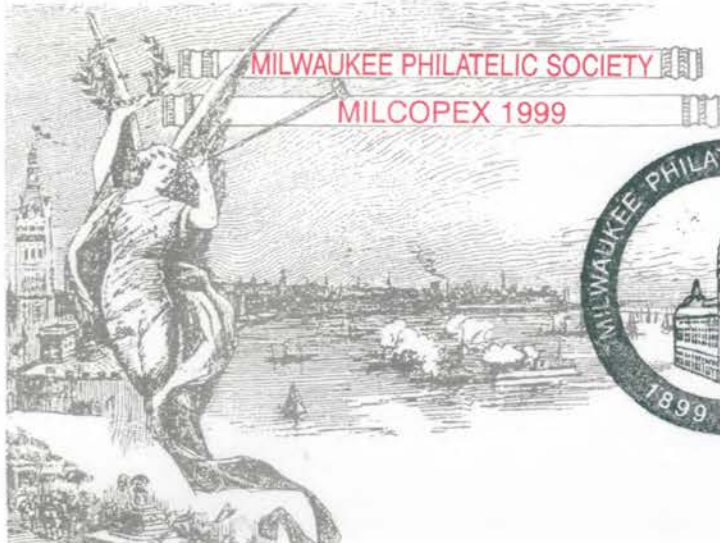
I. Milcopex Covers

Milcopex 1999 (Sept. 17-19)
Theme: 100th Anniversary of the M.P.S.



Cachet: from
"Blue Angel"
advertising
covers honoring
Milwaukee's
Semi-Centennial
in 1898

Cancel: From
M.P.S. Seal
showing City
Hall



CELEBRATING 100 YEARS OF PHILATELY

I. Milcopex Covers

Milcopex 2000 (Sept. 15-17)

MILCOPEX 2000

MILWAUKEE PHILATELIC SOCIETY



Cachet: Scott #940, Honoring Those Who Served



MILCOPEX 2000

MILWAUKEE PHILATELIC SOCIETY



MILCOPEX 2000

MILWAUKEE PHILATELIC SOCIETY



I. Milcopex Covers

Milcopex 2001 (Sept. 14-16)
National Convention of the Eire
Philatelic Association

MILCOPEX 2001

MILWAUKEE PHILATELIC SOCIETY



Cachet: Seal of
Eire Philatelic
Association

Cancel: Celtic
Harp

MILCOPEX 2001

MILWAUKEE PHILATELIC SOCIETY



MILCOPEX 2001

MILWAUKEE PHILATELIC SOCIETY



I. Milcopex Covers

Milcopex 2002 (Sept. 20-22)
Trans-Mississippi Philatelic Society

Milwaukee Philatelic Society

MILCOPEX 2002

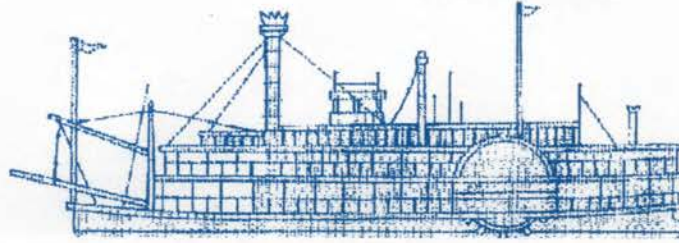


Cruising



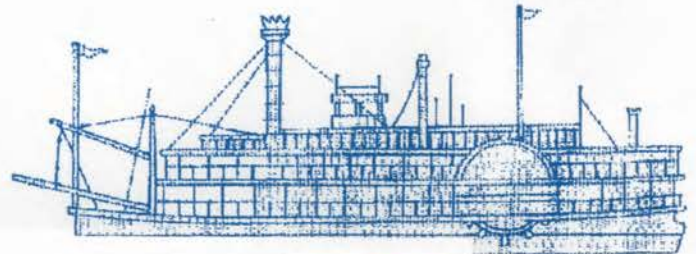
Cachet: Map of Mississippi Floage & paddle wheel steamboat

Cancel: Outline of Wisconsin plus state flower (wood violet), state bird (robins) and Milwaukee City Hall.



MILCOPEX 2002

Milwaukee Philatelic Society

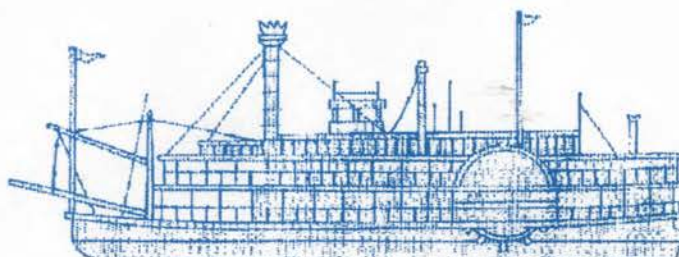


MILCOPEX 2002

Milwaukee Philatelic Society



Cruising down the Mississippi



I. Milcopex Covers

Milcopex 2003 (Sept. 19-21)
National Convention of the China
Stamp Society

MILWAUKEE PHILATELIC SOCIETY

MILCOPEX 2003



MILWAUKEE PHILATELIC SOCIETY

MILCOPEX 2003



MILWAUKEE PHILATELIC SOCIETY

MILCOPEX 2003

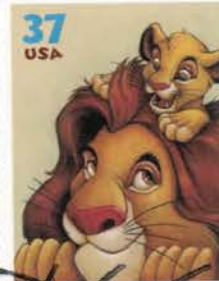


中国—东方巨人

I. Milcopex Covers

Milcopex 2004 (Sept. 3-5)
Theme: Stamp Adventureland

Cachet Design:
Jay Bigalke,
FPMG Cachets

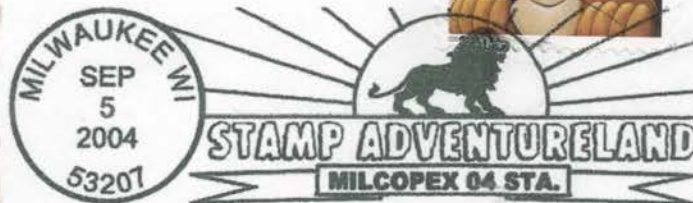


STAMP ADVENTURELAND

MILCOPEX



STAMP ADVENTURELAND



STAMP ADVENTURELAND

MILCOPEX 2004 Station • September 3 - 5, 2004 • Milwaukee, Wisconsin

I. Milcopex Covers

Milcopex 2005 (Sept. 16-18)

Theme: Today's Mail - Tomorrow's Postal History
Midwest Multi-state Postal History Competition

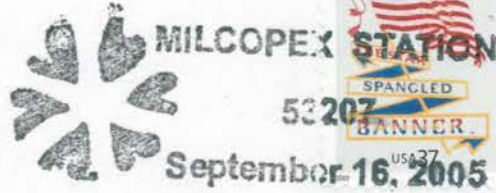
Cachet design:
Rich Berger

Cachet:
Milwaukee's
First Post Office

Cancel: adapted
from a scarce
Milwaukee
cancel circa 1870

MILCOPEX 2005

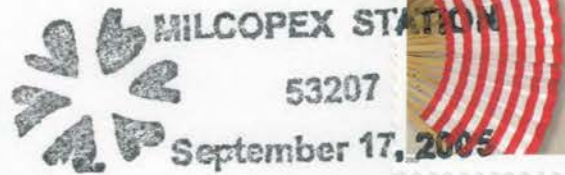
TODAY'S MAIL
TOMORROW'S POSTAL HISTORY



M

TODAY'S MAIL
TOMORROW'S POSTAL HISTORY

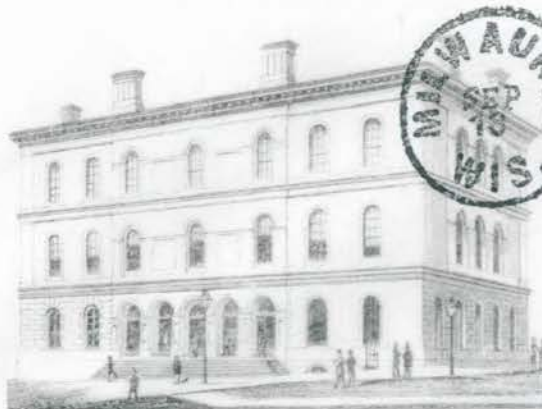
MILCOPEX 2005



M

TODAY'S MAIL
TOMORROW'S POSTAL HISTORY

MILCOPEX 2005



MILWAUKEE'S FIRST POST OFFICE

I. Milcopex Covers

Milcopex 2006 (Sept. 15-17)
Honoring Benjamin Franklin 1706-2006
Convention - Mobile Post Office Society

Milwaukee Philatelic Society



Honoring
Benjamin Franklin
First Postmaster-General

1706
MILCOPEX



Milwaukee Philatelic Society



Honoring
Benjamin Franklin
First Postmaster-General



Milwaukee Philatelic Society



Honoring
Benjamin Franklin
First Postmaster-General

1706 to 2006
MILCOPEX 2006



I. Milcopex Covers

Milcopex 2006 (Sept. 15-17)

Design: Carol Schutta

Harley Davidson Motorcycle



MILCOPEX 2006

Milwaukee Philatelic Society

Carol Schutta

Cachet: Honoring more than 100 years of Harley-Davidson in Milwaukee



Milcopex Station
Milwaukee, WI 53207



Harley Davidson Motorcycle



MILCOPEX 2006

Milwaukee Philatelic Society

Original draft of cachet

I. Milcopex Covers

Milcopex 2007 (Sept. 14-16)

Theme: Milwaukee Vice

Milwaukee Philatelic Society

MILCOPEX 2007



Cachet designs:
Arthur Graf

Cancel design:
Adriana Kori Graf

2

Milwaukee Philatelic Society

MILCOPEX 2007



1

Milwaukee Philatelic Society

MILCOPEX 2007



Milwaukee Vice

I. Milcopex Covers

Milcopex 2008 (Sept. 12-14)
Theme: Skinflint Philately

MILCOPEX 2008

Milwaukee Philatelic Society, Inc.

skinflint
Philately

MILCOPEX STATION

September 12, 2008

Milwaukee, WI 53222



Cachet: Idea -
Robert Mather

Initial design:
Dona Fagan

Final Design:
Darren Mueller

Cancel design:
Darren Mueller

MILCOPEX 2008

Milwaukee Philatelic Society, Inc.

skinflint
Philately

MILCOPEX STATION

September 13, 2008

Milwaukee, WI 53222



MILCOPEX 2008

Milwaukee Philatelic Society, Inc.

skinflint
Philately

MILCOPEX STATION

September 14, 2008

Milwaukee, WI 53222



It may not be fancy,
but its still a cachet.

I. Milcopex Covers

Milcopex 2009 (Sept. 25-27)
Theme: Thanks for the Memory

Cachet Design:
Carol Schutta

Cancel design:
Dona Fagan

MILCOPEX 2009



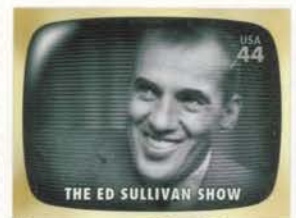
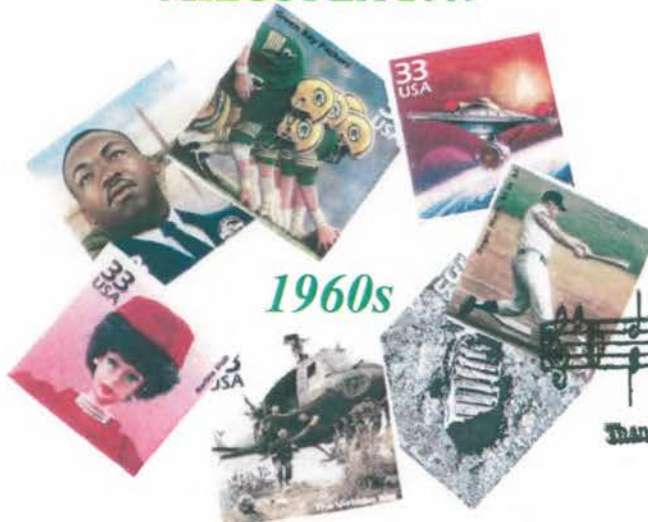
MILW

MILCOPEX 2009



MILW

MILCOPEX 2009



MILWAUKEE PHILATELIC SOCIETY, INC

I. Milcopex Covers

Milcopex 2010 (Sept. 24-26)
Theme: Innovations in Philately

MILCOPEX 2010



Cachet and
Cancel Designs:
Robert Mather

Computer
Postage Design:
Carol Schutta

Milwaukee, Wisconsin
53207

September 24, 2010
Innovations in Philately

INNOVATIONS IN PHILATELY
YESTERDAY
TODAY
TOMORROW

MILV

MILCOPEX 2010



Milwaukee, Wisconsin
53207

September 25, 2010
Innovations in Philately

INNOVATIONS IN PHILATELY
YESTERDAY
TODAY
TOMORROW

MIL

MILCOPEX 2010



Milwaukee, Wisconsin
53207

September 26, 2010
Innovations in Philately

INNOVATIONS IN PHILATELY
YESTERDAY
TODAY
TOMORROW

I. Milcopex Covers

Milcopex 2011 (Sept. 16-18)
Uniquely Milwaukee

MILCOPEX SALUTES
"THE DOMES"



FLORAL DESERT TROPICAL

MITCHELL PARK
CONSERVATORY

UN

MILCOPEX SALUTES
SUMMERFEST



SUMMERFEST
THE WORLD'S LARGEST MUSIC FESTIVAL

UNIQU

MILCOPEX SALUTES
BROOKS STEVENS



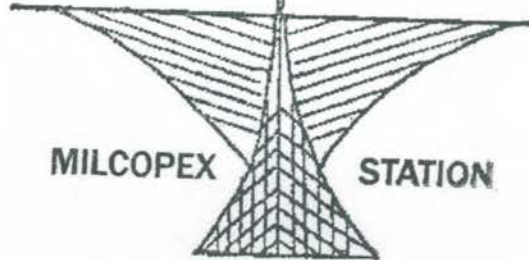
BROOKS STEVENS
MILWAUKEE INDUSTRIAL DESIGNER

UNIQUELY MILWAUKEE



MILWAUKEE, WI
53207

SEPTEMBER 16
2011

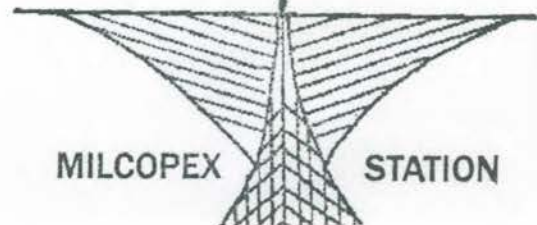


MILCOPEX STATION



MILWAUKEE, WI
53207

SEPTEMBER 17
2011

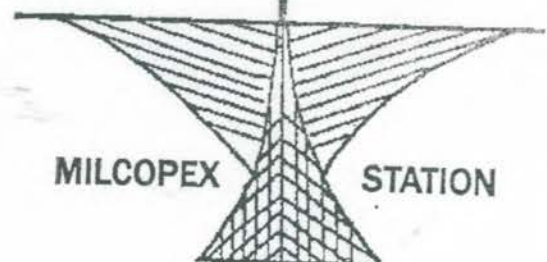


MILCOPEX STATION



MILWAUKEE, WI
53207

SEPTEMBER 18
2011



MILCOPEX STATION

I. Milcopex Covers

Milcopex 2012 (Sept. 21-23)
Moving the Mail by Air & by Rail

MOVING

THE



MAIL



By Air & By Rail

1



RMS

MOVING

THE



MAIL



By Air & By Rail



RMS

MOVING

THE



MAIL



By Air & By Rail

MILCOPEX 2012



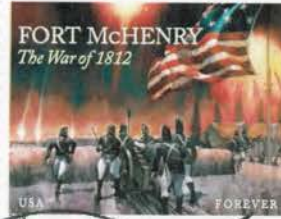
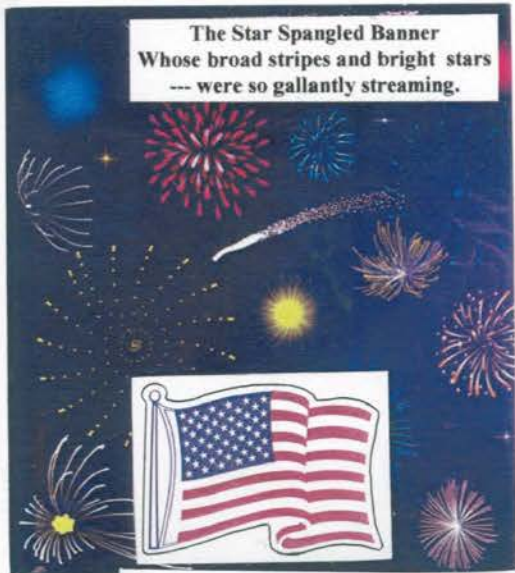
RMS

I. Milcopex Covers

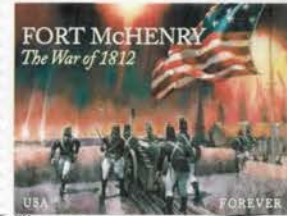
Milcopex 2014 (Sept. 19-21) The Star Spangled Banner

Cachet Design:
Robert Mather

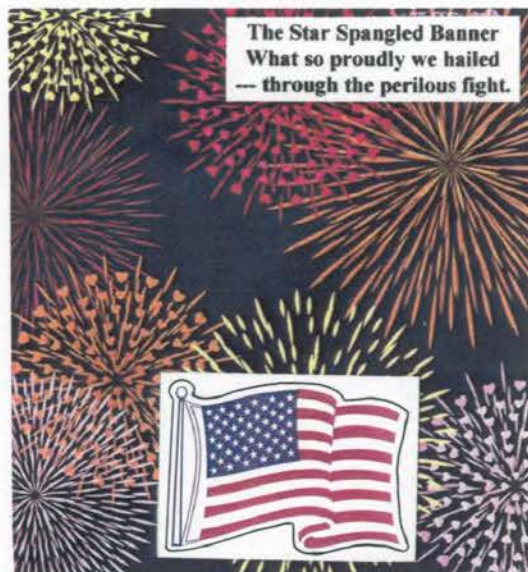
Cancel Design:
Robert R. Henak



MILCOPEX
OF "THE



MILCOPEX
OF "7



**MILCOPEX IN TRIBUTE - 200 YEARS
OF "THE STAR SPANGLED BANNER"**

I. Milcopex Covers

Milcopex 2015 (Sept. 25-27)
150th Anniversary of Alice's Adventures
in Wonderland



150th Anniversary of
*Alice's Adventures
in Wonderland*
by Lewis Carroll
1865 - 2015

MILCOPEX

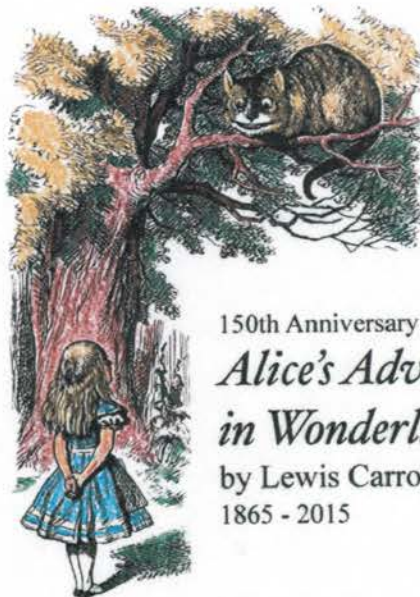


Cachet and
Cancel Design:
John St. Onge



150th Anniversary of
*Alice's Adventures
in Wonderland*
by Lewis Carroll
1865 - 2015

MILCO



150th Anniversary of
*Alice's Adventures
in Wonderland*
by Lewis Carroll
1865 - 2015



I. Milcopex Covers

Milcopex 2016 (Sept. 16-18) Celebrating the Art of La Belle Époque

Henri de Toulouse-Lautrec (1864-1901), Linger Longer Loo, 1894

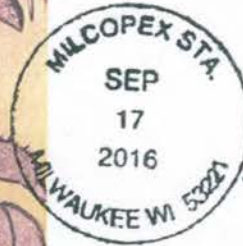


Cachet and
Cancel Design:
John St. Onge

Celebrating the Art of **La Belle É**

MILCOPEX 2016 Milw

Henri de Toulouse-Lautrec (1864-1901), Divan Japonais 1893



French Poster Art of **La Belle Époque**

Henri de Toulouse-Lautrec (1864-1901), At the Moulon Rouge 1892/95



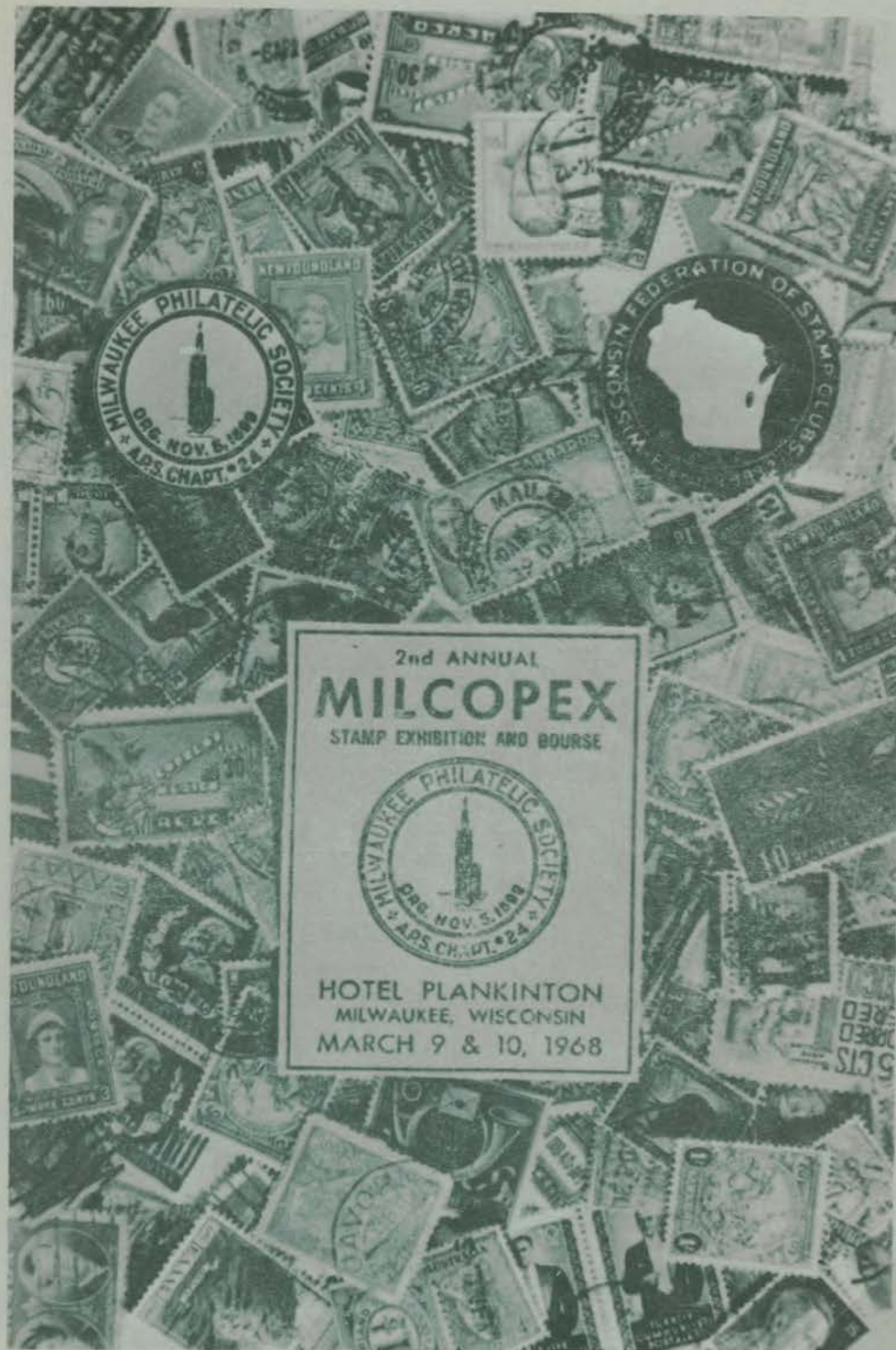
Celebrating the Art of **La Belle Époque**

MILCOPEX 2016 Milwaukee Philatelic Society, Inc.

II. Milcopex Show Programs

Milcopex 1968 (March 9 & 10)

elr 1968



II. Milcopex Show Programs

Milcopex 1971 (March 6 & 7)
Show Theme: Europa



II. Milcopex Show Programs
100 Years, Universal Postal Union

Milcopex 1974 (March 8 - 10)
75th Anniversary of
Milwaukee Philatelic Society

Milcopex '74



75th ANNIVERSARY STAMP EXHIBITION

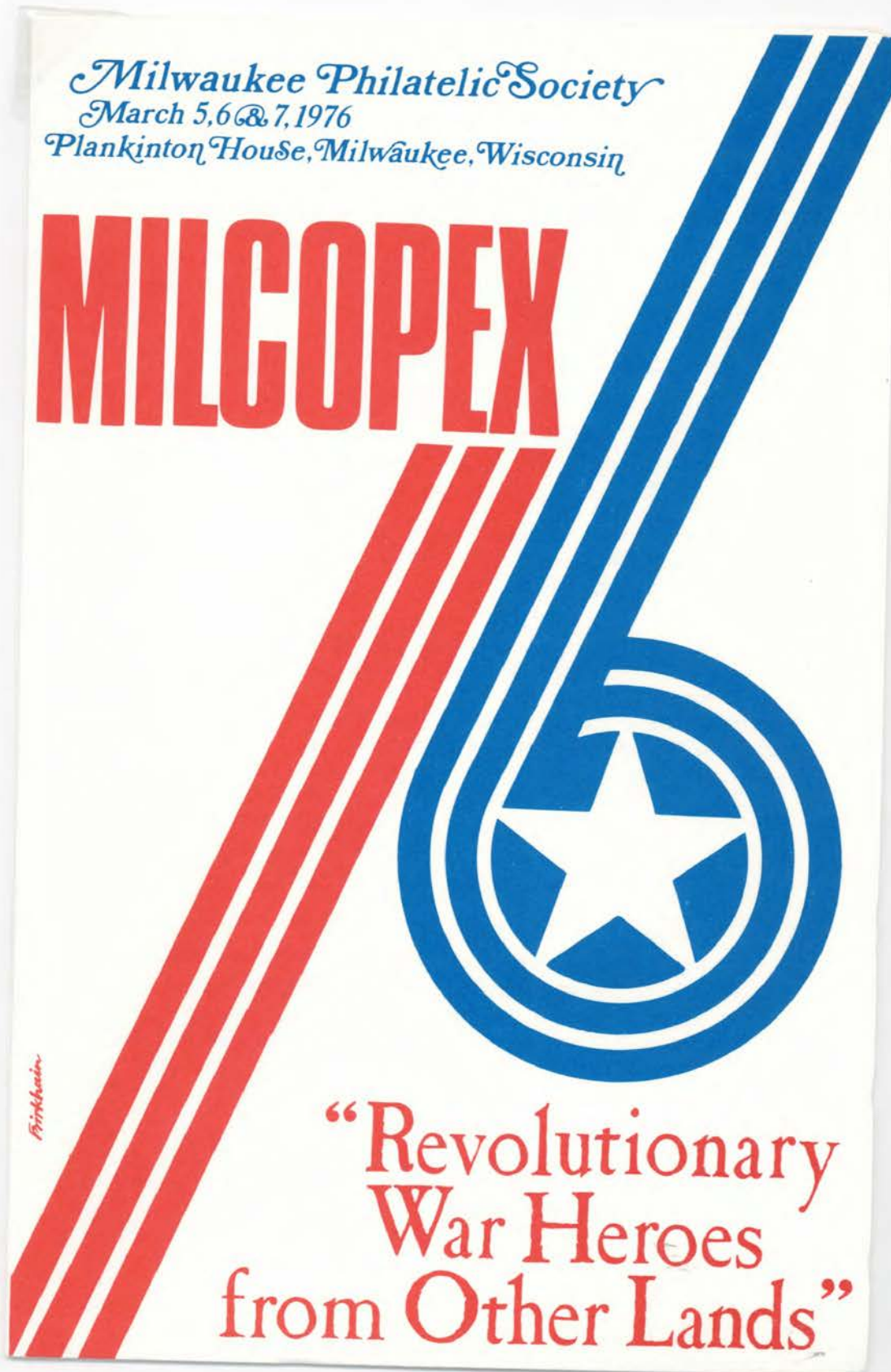
Milwaukee Philatelic Society

II. Milcopex Show Programs

Milcopex 1976 (March 5-7)
Honoring Revolutionary War Heroes from
Other Lands

Milwaukee Philatelic Society
March 5, 6 & 7, 1976
Plankinton House, Milwaukee, Wisconsin

MILCOPEX

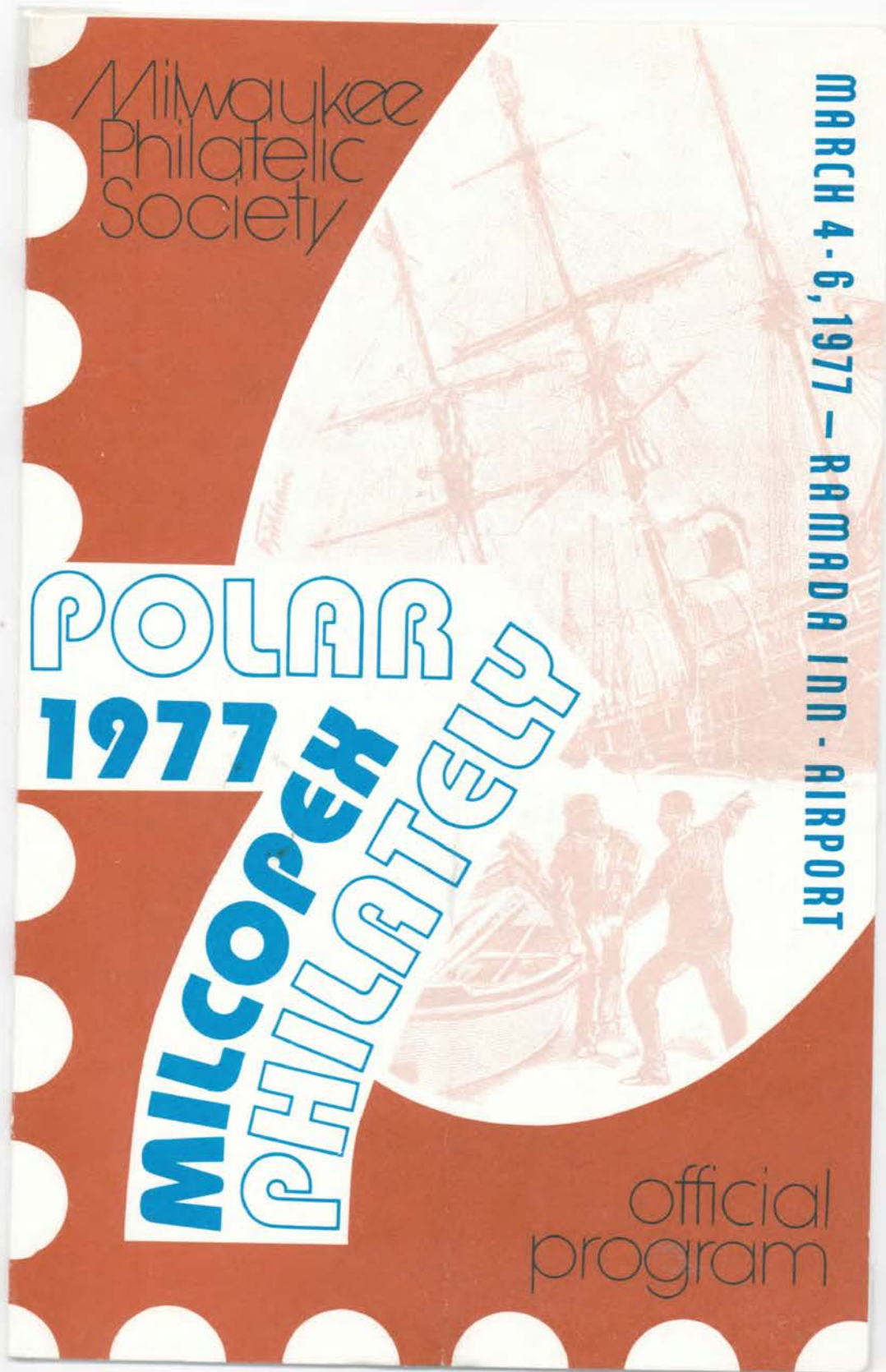


Prinkman

**“Revolutionary
War Heroes
from Other Lands”**

II. Milcopex Show Programs

Milcopex 1977 (March 4-6)
Convention of American Society of Polar
Philatelists



Milwaukee
Philatelic
Society

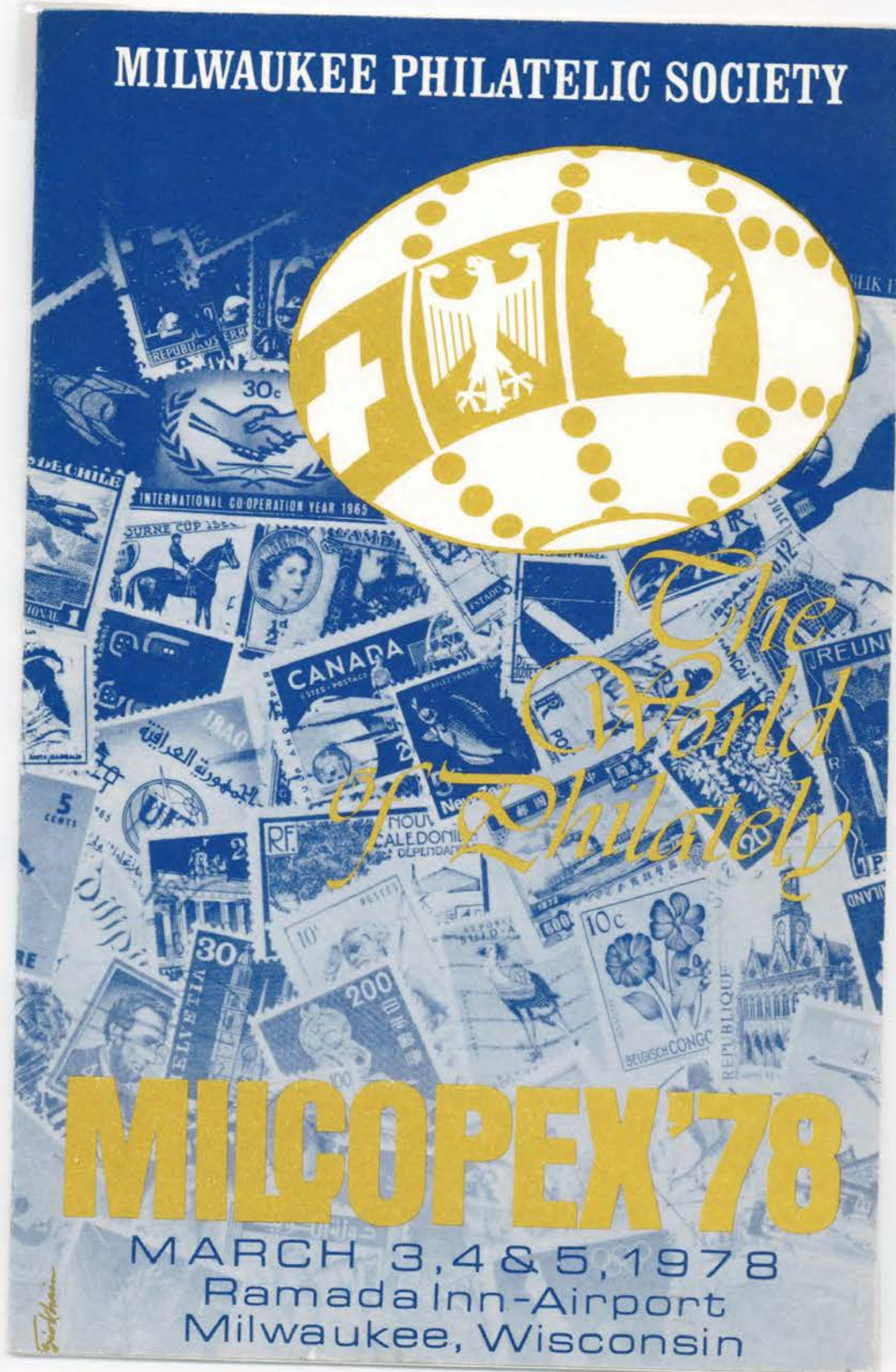
POLAR
1977
MILCOPEX
PHILATELY

MARCH 4-6, 1977 - RAMADA INN - AIRPORT

official
program

II. Milcopex Show Programs

Milcopex 1978 (March 3-5)
Convention of U.S. Stationery Society,
American Helvetia Philatelic Society, and the
Germany Philatelic Society - Chapter 5



II. Milcopex Show Programs

Milcopex 1979 (March 2-4)
Aerospace: Past, Present and Future



MILWAUKEE
PHILATELIC
SOCIETY

80
YEARS
1899 1979

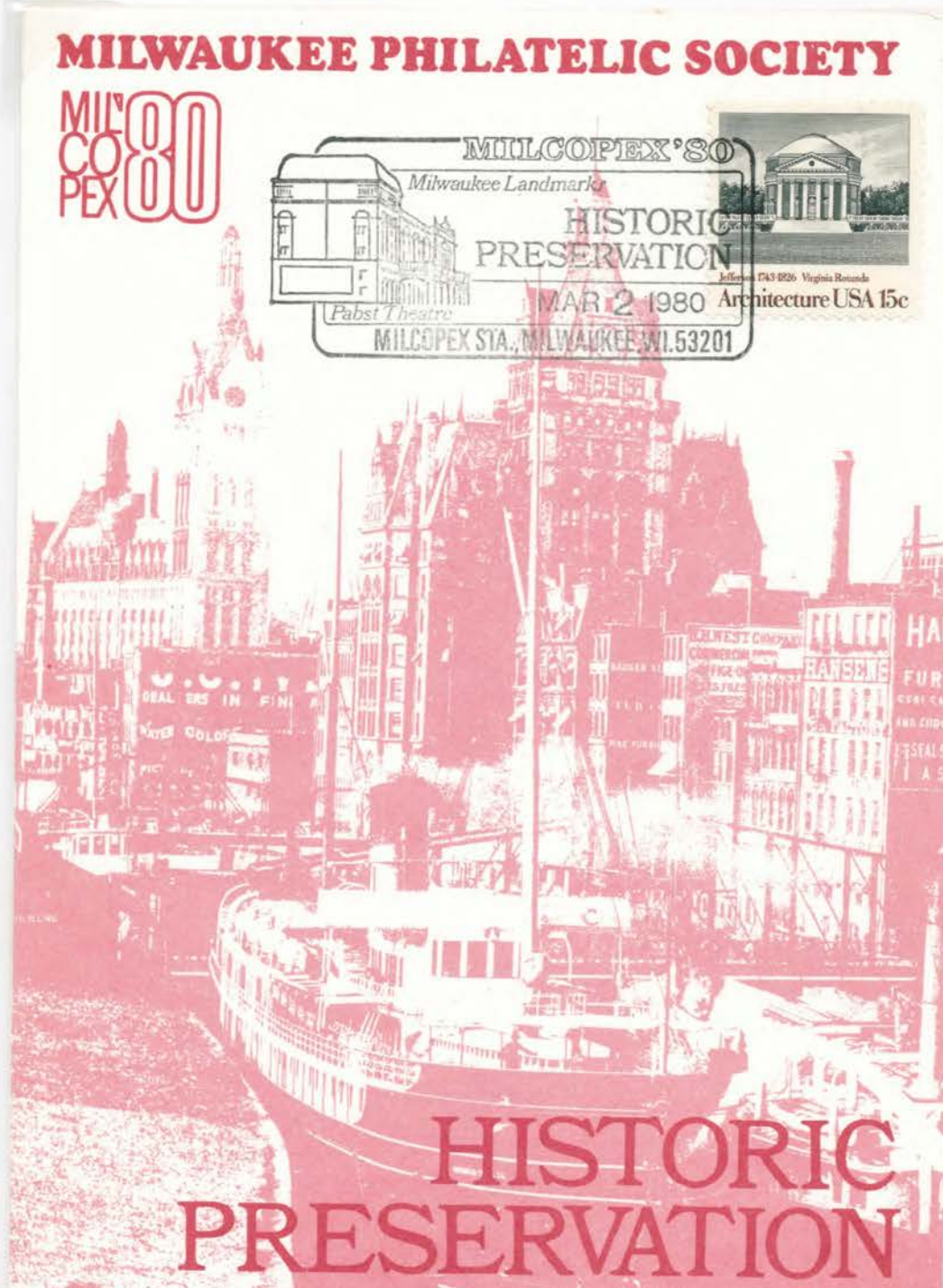
1979
MILCOPEX

march 2,3&4 • ramada inn-airport

AEROSPACE

II. Milcopex Show Programs

Milcopex 1980 (Feb. 29 - March 2)
Historic Preservation



MILWAUKEE PHILATELIC SOCIETY

MILCOPEX 80

MILCOPEX '80
Milwaukee Landmark

HISTORIC PRESERVATION

Pabst Theatre

Jefferson 1743 1826 Virginia Rotunda

MAR 2 1980 Architecture USA 15c

MILCOPEX STA., MILWAUKEE, WI. 53201

HISTORIC PRESERVATION

Feb. 29, March 1&2, 1980 Ramada Inn - Airport

Birkham

MILWAUKEE ABOUT 1894

II. Milcopex
Show Programs

Milcopex 1981
(Feb. 27 - March 1)
British Philately

Milwaukee Philatelic Society
MILCOPEX
1981



BRITISH
PHILATELY

Feb. 27, 28, Mar. 1 · Red Carpet Hotel

II. Milcopex
Show Programs

Milcopex 1982
(March 5-7)
German Philately

MILCOPEX
1982

Philatelica
Germania



MARCH
5·6·7
MECCA

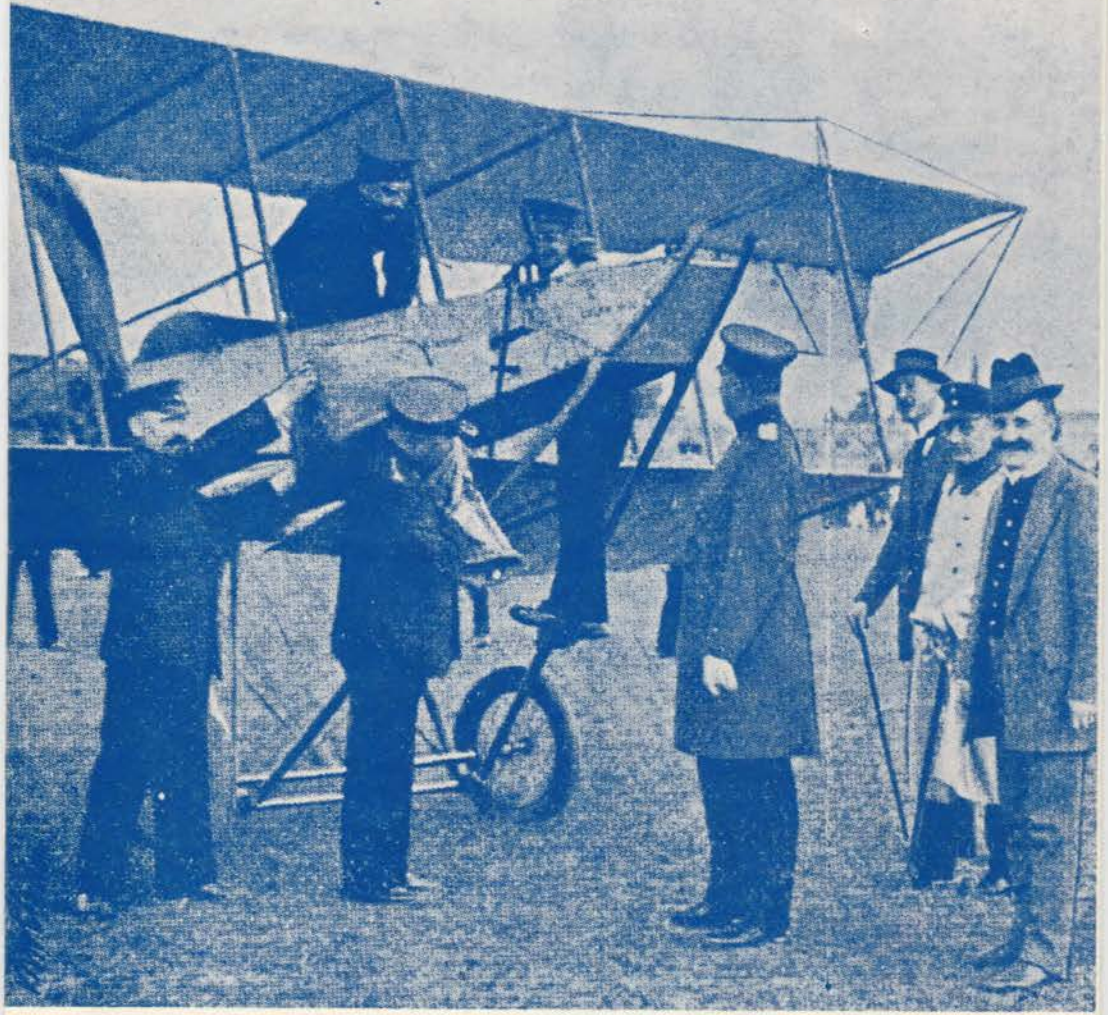
MILWAUKEE
PHILATELIC
SOCIETY

II. Milcopex
Show Programs

Milcopex 1983
(March 4-6)
Aviation in Philately

Milwaukee Philatelic Society

**MILCOPEX
'83**



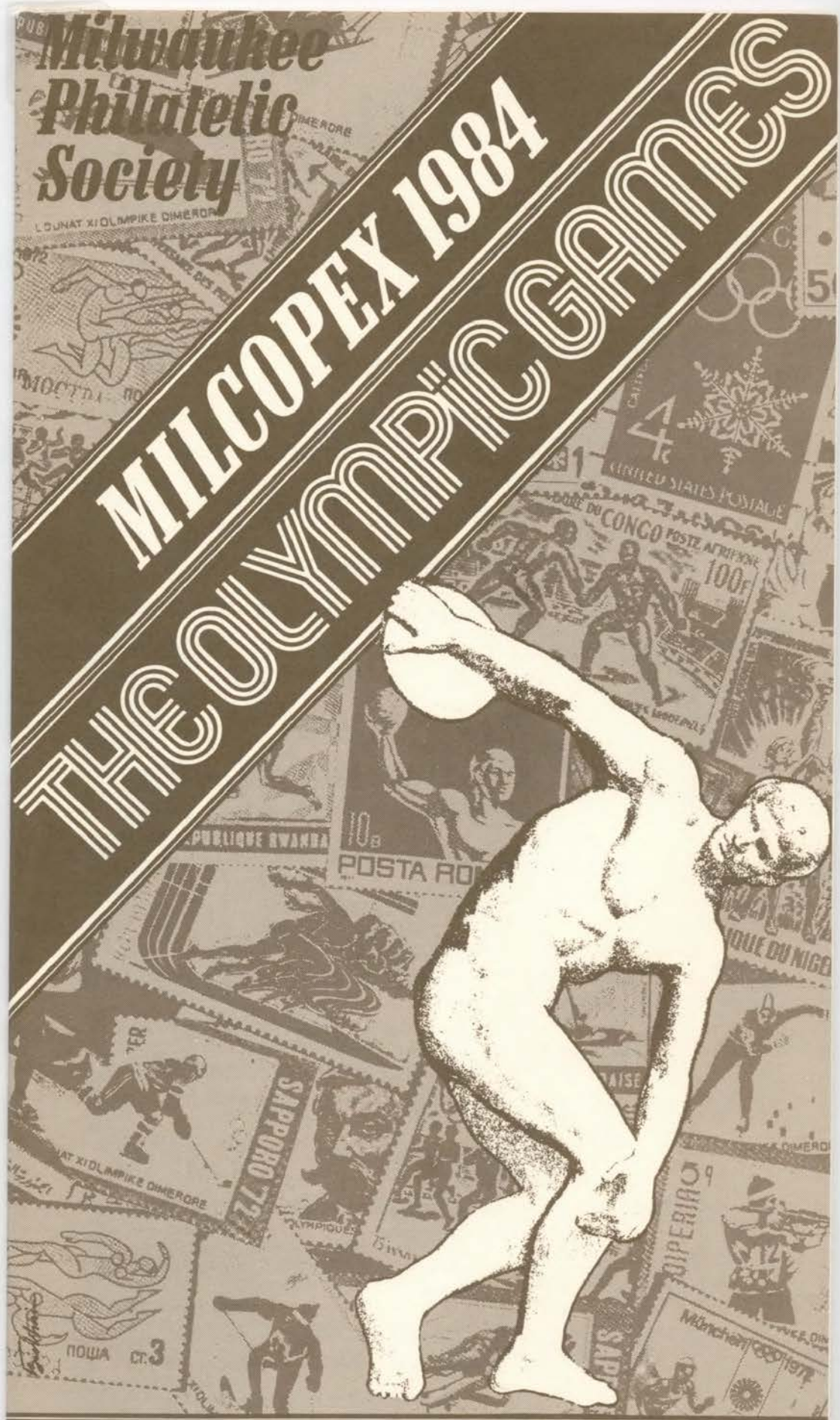
*Aviation in
Philately*

MARCH 4•5•6

MECCA

II. Milcopex
Show Programs

Milcopex 1984
(March 2-4)
The Olympic Games



MARCH 2•3•4
MILWAUKEE MECCA

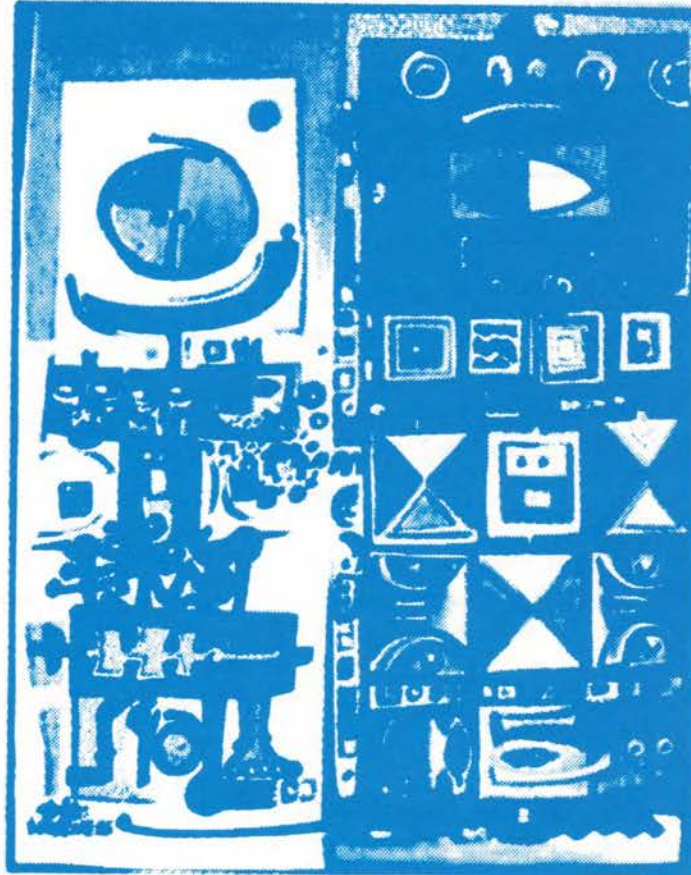
II. Milcopex Show Programs

Milcopex 1986 (February 28 - March 2)
United Nations Philately

MILWAUKEE PHILATELIC SOCIETY

Franklin

MILCOPEX 1986



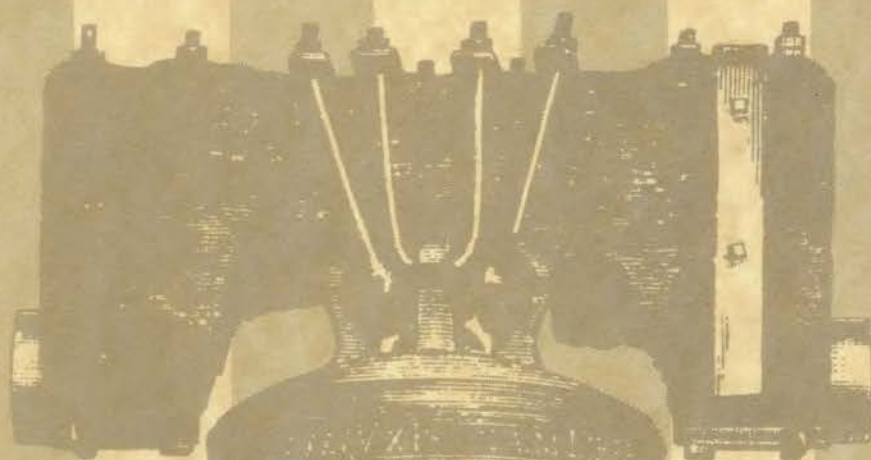
United Nations
AFRICA IN CRISIS
1986

22c



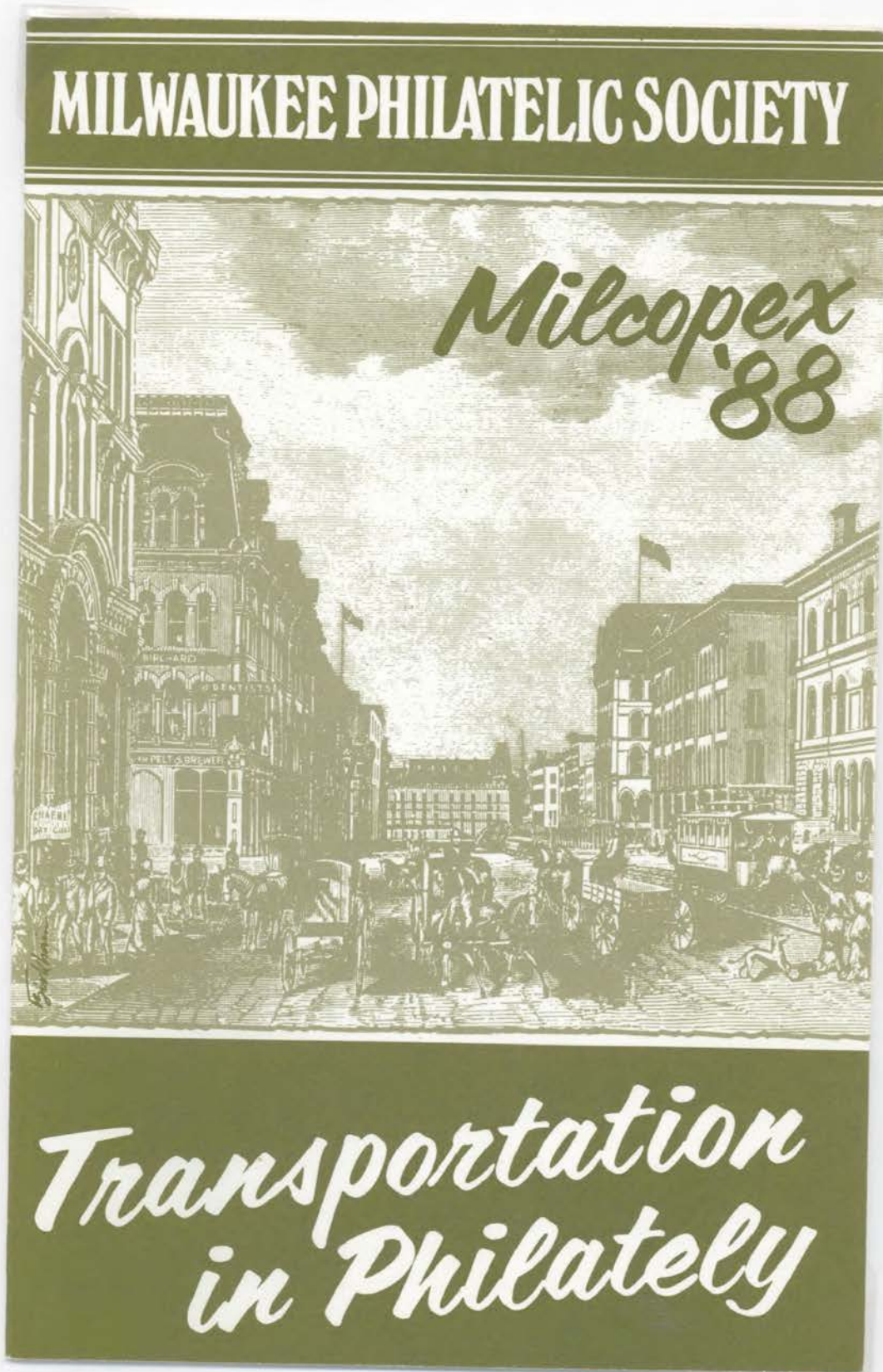
UNITED
NATIONS
PHILATELY

MILCOPEX 1987



200 YEARS
United States
CONSTITUTION

Milwaukee Philatelic Society




II. Milcopex Show Programs

Milcopex 1989 (March 3-5)
200 Years of U.S. Postal Service

MILWAUKEE PHILATELIC SOCIETY

90 YEARS
1899-1989

Milcopex
1989

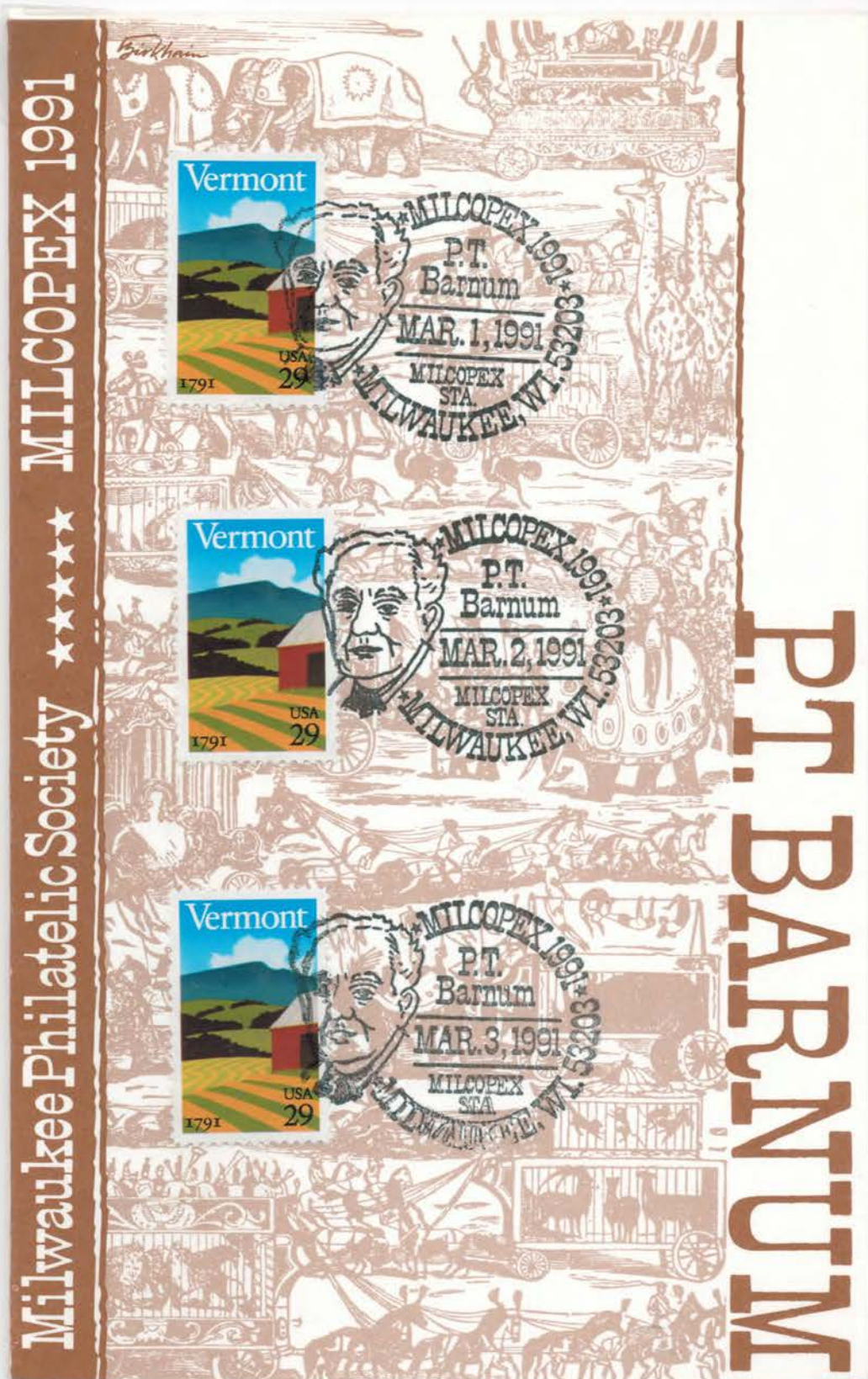


200 YEARS
UNITED STATES
POSTAL SERVICE



II. Milcopex Show Programs

Milcopex 1991 (March 1-3)
P.T. Barnum



II. Milcopex Show Programs

Milcopex 1992 (March 6-8)
Christopher Columbus and the Discovery
of America

MIL 1992

WORLD COLUMBIAN STAMP EXPO '92
Chicago, May 22-31, 1992
29 USA

U.S. POSTAGE

Christopher Columbus
MAR. 6, 1992
Milcopex Sta., MILWAUKEE, WI. 53203

WORLD COLUMBIAN STAMP EXPO '92
Chicago, May 22-31, 1992
29 USA

U.S. POSTAGE

Christopher Columbus
MAR. 7, 1992
Milcopex Sta., MILWAUKEE, WI. 53203

MILWAUKEE PHILATELIC SOCIETY
INC. A.P.S. #529861
ORG. NOV. 5, 1899

CHRISTOPHER COLUMBUS

AND THE DISCOVERY OF AMERICA

WORLD COLUMBIAN STAMP EXPO '92
Chicago, May 22-31, 1992
29 USA

U.S. POSTAGE

Christopher Columbus
MAR. 8, 1992
Milcopex Sta., MILWAUKEE, WI. 53203

MILWAUKEE PHILATELIC SOCIETY

II. Milcopex Show Programs

Milcopex 1993 (March 5-7)
German Philately





Milwaukee Philatelic Society, Inc.

MILCOPEX 1995

Annual Postage Stamp Exhibition and Bourse.
National Convention - American Society of Polar Philatelists

MILCOPEX 1996

Annual Postage Stamp
Exhibition and Bourse

September 20, 21 & 22, 1996

Exhibition Theme
CZECHOSLOVAK PHILATELY

Wisconsin State Fair Park
81st St. and West Greenfield Ave.
West Allis, Wisconsin

Trade Mart Building #741
Wisconsin State Fair Park Address
Grandstand Avenue and Third St.

Judges of the Exhibition

Bob Ziegler, Chairman
Jim Kraemer
Gale Raymond
Dan Rhoades
Hal Vogel

Apprentice:
Kenneth Pruess



**AMERICAN
PHILATELIC SOCIETY**
"World Series of Philately"
Exhibition

American Bank Note Company
MILCOPEX 1995
Engraved Souvenir Card
Three Drawings Daily

MILCOPEX 1995 CACHET



Cover \$1.00 each, 3 for \$2.50
Available at Registration Table

MILCOPEX 1995 CANCEL



MILCOPEX 1995 AWARDS BANQUET

MILWAUKEE PHILATELIC SOCIETY
SATURDAY September 23, 1995
Cocktail Hour: 6:30 to 7:30 pm
Dinner at 7:30 pm
Wisconsin Club
900 West Wisconsin Ave.
Milwaukee, Wisconsin

Awards for MILCOPEX 1995

MILCOPEX Grand Award
MILCOPEX Reserve Grand Award

Milwaukee Philatelic Society
Unlimited Gold, Vermeil, Silver,
Silver Bronze and Bronze Medals
Wm. J. Uihlein Trophy for Best
Americana

American Philatelic Society
Pre 1900 Medal of Excellence
1900 -1940 Medal of Excellence
Post 1940 Medal of Excellence
Research Medal

Postal History Society Medal
American Topical Association
Gold Medal

**American Association of
Philatelic Exhibitors**
Awards of Honor (2 pins)
Creativity in Philatelic
Exhibiting Medal

Bureau Issues Association
"The Statue of Freedom Award"

Rossica Society of Russian Philately
Ribbon

American Society of Polar Philatelists
Best Classical Polar Exhibit
Best Modern Polar Exhibit

YOUTH AWARDS

MPS Junior Awards
Regular Medals
ATA Youth Award
AAPE Youth Grand Award Medal
JPA Blue Ribbon
JPA H. E. Harris Medal
Boys Town Best of Show Ribbon

Milwaukee Philatelic Society, Inc.

MILCOPEX 1996

September 20, 21 and 22

Annual Postage Stamp Exhibition and Bourse.

National Convention - The Society for Czechoslovak Philately, Inc.

MILCOPEX 1997

Annual Postage Stamp
Exhibition and Bourse

September 19, 20, & 21, 1997

National Convention
United Postal Stationery Society

EXHIBITION THEME
Postal Stationery

Wisconsin State Fair Park
81st St and West Greenfield Ave
West Allis, Wisconsin

Trade Mart Building #741
Wisconsin State Fair Park Address
Grandstand Avenue and Third Street

FUTURE BOURSE SCHEDULE

Milwaukee Philatelic Society, Inc.

STAMPFEST 1997

March 1 and 2, 1997
Gonzaga Hall
1435 South 92nd Street
West Allis, Wisconsin

STAMPFEST 1998

March 7 and 8, 1998
Gonzaga Hall
1435 South 92nd Street
West Allis, Wisconsin

JUDGES OF THE EXHIBITION

Russell Skavaril, Chairman
Anthony Brooks
Henry Hahn
John Fluck
Stephen Frater
Eliot Landau, Apprentice



**AMERICAN
PHILATELIC SOCIETY**
"World Series of Philately"
Exhibition



The Society for Czechoslovak Philately

Milwaukee Philatelic Society

Come join the fun of
Stamp Collecting

Monthly meetings-except July
3rd Wednesday 7:30pm
Zablocki Park Pavilion
3717 W Howard Ave
Milwaukee, Wisconsin

**MILCOPEX 1996
AWARDS BANQUET**
Milwaukee Philatelic Society
Saturday September 21, 1996
Cocktail Hour: 6:30 to 7:30 pm
Dinner at 7:30 pm
Alioto's Restaurant
3041 North Mayfair Rd (N 108th St)

AWARDS FOR MILCOPEX 1996

MILCOPEX Grand Award
MILCOPEX Reserve Grand Award
Unlimited Gold, Vermil, Silver,
Silver Bronze, and Bronze Medals
APS pre 1900 Medal of Excellence
APS 1900-1940 Medal of
Excellence
APS post 1940 Medal of
Excellence
APS Research Medal
Postal History Society Medal
ATA Gold Medal
United Postal Stationery Awards
Marcus White Trophy
Blue Certificate
Red Certificate
American Association of
Philatelic Exhibitors
Awards of Honor (2 pins)
Creativity in Philatelic-
Exhibiting Medal
Bureau Issues Association Medal
"The Statue of Freedom Award"
U.S. Philatelic Classics-
Society Award
Rossica Society of Russian-
Philately Ribbon
MPS Wm. J. Uihlein Trophy for
Best Americana
U.S. Cancellation Club
Charles D. Root Memorial Award
Modern Postal History Society Award

YOUTH AWARDS

MPS Junior Awards
(Regular Medals)
ATA Youth Award
AAPE Youth Grand Award Medal
NAYSEC
Youth Grand Award Medal
Boys Town Best of Show Ribbon
JPA Blue Ribbon
JPA H.E. Harris Ribbon

Milwaukee Philatelic Society, Inc.

MILCOPEX 1997

September 19, 20 and 21

Annual Postage Stamp Exhibition and Bourse.
National Convention - United Postal Stationery Society

MILCOPEX 1998

Annual Postage Stamp
Exhibition and Bourse

September 18, 19 & 20, 1998

National Convention

AMERICAN HELVETIA
PHILATELIC SOCIETY

Wisconsin State Fair Park
81st St and West Greenfield Ave
West Allis, Wisconsin

Trade Mart Building #741
Wisconsin State Fair Park Address
Grandstand Avenue and Third Street

FUTURE BOURSE SCHEDULE

Milwaukee Philatelic Society, Inc.

STAMPFEST 1998

March 3 and 8, 1998
Gonzaga Hall
1435 South 92nd Street
West Allis, Wisconsin

STAMPFEST 1999

March 6 and 7, 1999
Gonzaga Hall
1435 South 92nd Street
West Allis, Wisconsin

JUDGES OF THE EXHIBITION

Jeanette Adams, Chairman
James Adams
John Fluck
Bernard A. Hennig
Les Winick
John Grabowski, Apprentice



AMERICAN
PHILATELIC SOCIETY
"World Series of Philately"
Exhibition



UNITED POSTAL STATIONERY
SOCIETY

Special Attraction

Woodcarver

Richard Byrne

Table F

Milwaukee Philatelic Society

Come join the fun of
Stamp Collecting
Monthly meetings-except July
3rd Wednesday 7:30pm
Zablocki Park Pavilion
3717 W Howard Ave
Milwaukee, Wisconsin

MILCOPEX 1997

AWARDS BANQUET

Milwaukee Philatelic Society
Saturday September 20, 1997
Cocktail Hour: 6:30 to 7:30 pm
Dinner at 7:30 pm
Pallas Restaurant
1657 South 108th Street

AWARDS FOR MILCOPEX 1997

MILCOPEX Grand Award
MILCOPEX Reserve Grand Award
Unlimited Gold, Vermil, Silver,
Silver Bronze, and Bronze Medals
APS pre 1900 Medal of Excellence
APS 1900-1940 Medal of
Excellence
APS post 1940 Medal of
Excellence
APS Research Medal
Postal History Society Medal
ATA Gold Medal
United Postal Stationery Awards
Marcus White Trophy
Blue Certificate
Red Certificate
Marcus White Showcase
Grand and Reserve Grand Awards
American Association of
Philatelic Exhibitors
Awards of Honor (2 pins)
Creativity in Philatelic-
Exhibiting Medal
Bureau Issues Association Medal
"The Statue of Freedom Award"
U.S. Philatelic Classics-
Society Award
Rossica Society of Russian-
Philately Ribbon
MPS Wm. J. Uihlein Trophy for
Best Americana
U.S. Cancellation Club
Charles D. Root Memorial Award
Modern Postal History Society Award

YOUTH AWARDS

MPS Junior Awards
(Regular Medals)
ATA Youth Award
AAPE Youth Grand Award Medal
NAYSEC
Youth Grand Award Medal
Boys Town Best of Show Ribbon
JPA Blue Ribbon
JPA H.E. Harris Ribbon

MILCOPEX 1998 HELVETIA '98

Milwaukee Philatelic Society, Inc.
Annual Postage Stamp Exhibition and Bourse

Hosting the National Convention of
American Helvetia Philatelic Society

American Philatelic Society
Champion of Champions Qualifying Exhibit
Judging Seminar and Critique

Wisconsin State Fair Park
Youth Center
I-94 and 84th Street – Gate 5

Friday, September 18 - 10 AM to 6 PM
Saturday, September 19 - 10 AM to 6 PM
Sunday, September 20 - 10 AM to 4 PM

MILCOPEX 1999



September 17, 18 & 19, 1999

Wisconsin State Fair Park

Youth Building

Milwaukee, Wisconsin

MILCOPEX 2003

MILCOPEX 2003



中国—东方巨人

September 19, 20 & 21, 2003
Wisconsin State Fair Park
Wisconsin Products Pavilion
-Milwaukee, Wisconsin

MILCOPEX 2006

Milwaukee Philatelic Society



Honoring
Benjamin Franklin
First Postmaster-General

1706 to 2006
MILCOPEX 2006

September 15 - 17, 2006
Batan Rouge Ballroom
Four Points by Sheraton Milwaukee Airport
4747 South Howell Avenue
Milwaukee, Wisconsin

American Philatelic Society World Series of Philately Show
Champion of Champions Qualifying Show

MILCOPEX 2007

Milwaukee Philatelic Society

MILCOPEX 2007



Milwaukee Vice

September 14 - 16, 2007
Baton Rouge Ballroom
Four Points by Sheraton Milwaukee Airport
4747 South Howell Avenue
Milwaukee, Wisconsin

American Philatelic Society World Series of Philately Show
Champion of Champions Qualifying Show

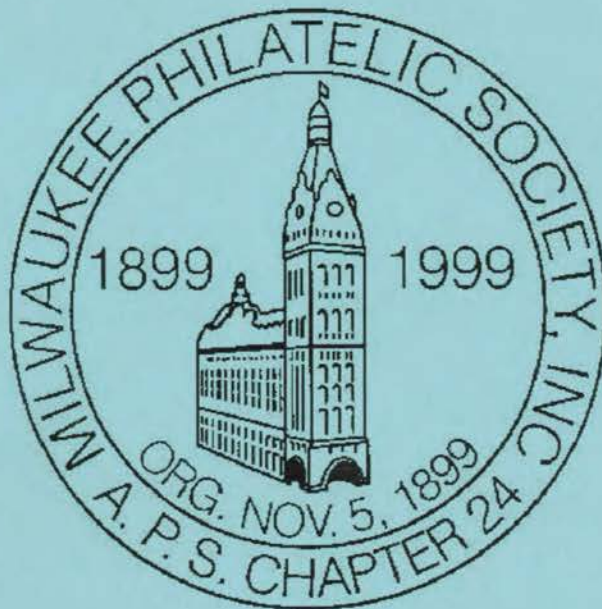
MILCOPEX 2008

skinflint
Philately

September 12 - 14, 2008
Bergstrom Hall - Mount Mary College
Two Blocks South of Burleigh on 92nd Street
Milwaukee, Wisconsin

American Philatelic Society World Series of Philately Show
Champion of Champions Qualifying Show

MILCOPEX 2009



September 25-27, 2009
Bergstrom Hall - Mount Mary College
Two Blocks South of Burleigh on 92nd Street
Milwaukee, Wisconsin

American Philatelic Society World Series of Philately Show
Champion of Champions Qualifying Show

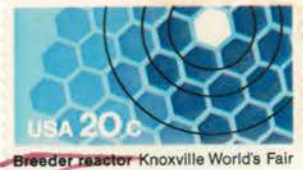
Beginning in 2009, the Milcopex show programs took on a standard format similar to that shown here.

III. Milcopex Banquet Favors

Milcopex long had a practice of providing overprinted B.E.P. or Post Office Souvenir Cards to those attending the annual Milcopex Awards Banquet.

Milcopex 1983

NATIONAL STAMP COLLECTING MONTH 1982



MAR 5 1983

The U.S. Postal Service is pleased to issue this souvenir card in honor of the second annual observance of National Stamp Collecting Month in October 1982, which is conducted in cooperation with the Council of Philatelic Organizations.

Stamp collecting engages the mind. The study of stamps, their thoughtful acquisition and display, the sharing of information about them, and organizing, attending and participating in stamp exhibitions stimulate a better understanding of ourselves and the world around us. Because people of every age can find pleasure in these activities, stamp collecting is indeed "the hobby of a lifetime."

We have chosen for reproduction on this souvenir card a stamp which has captured the imagination of philatelists everywhere. It is the 1918 Curtiss Jenny 24-cent Air Mail stamp with an inverted center. The error occurred during printing when a sheet was fed to the press facing in the wrong direction, resulting in the airplane appearing to fly upside-down. Only one pane of 100 stamps escaped detection and was placed on public sale. The pane was purchased on May 14, 1918 from a branch of the Washington, D.C., post office.

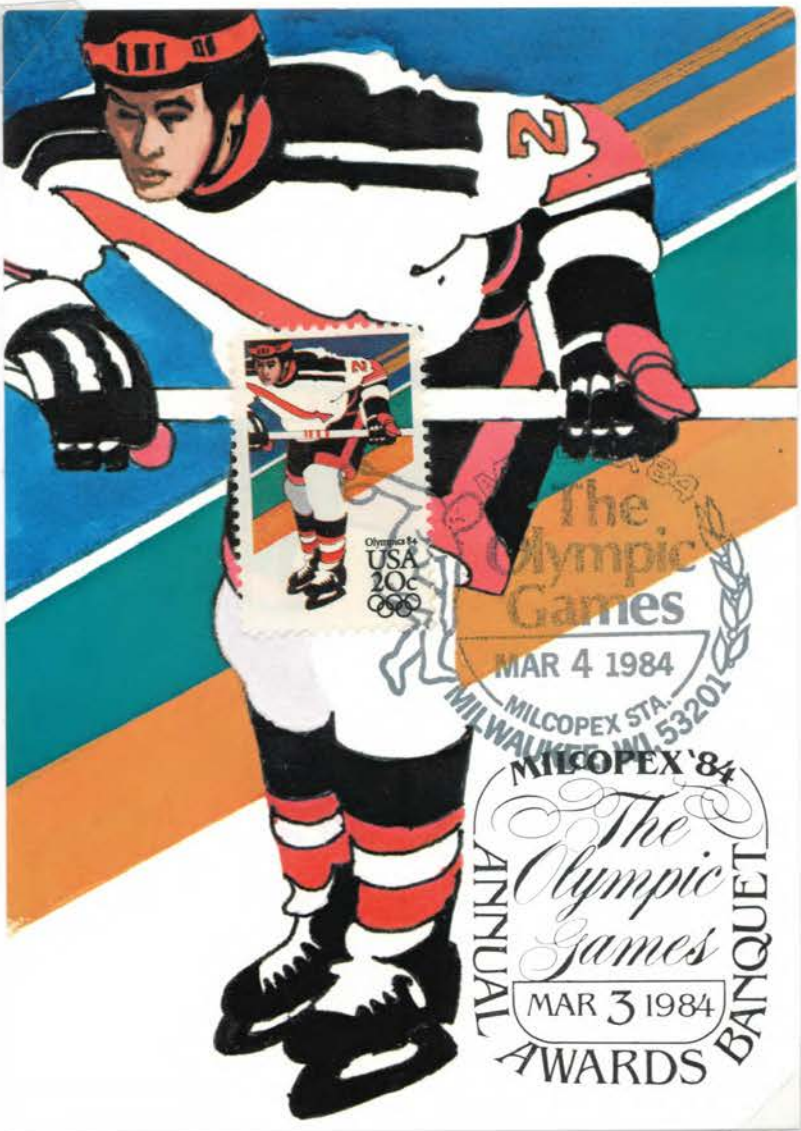
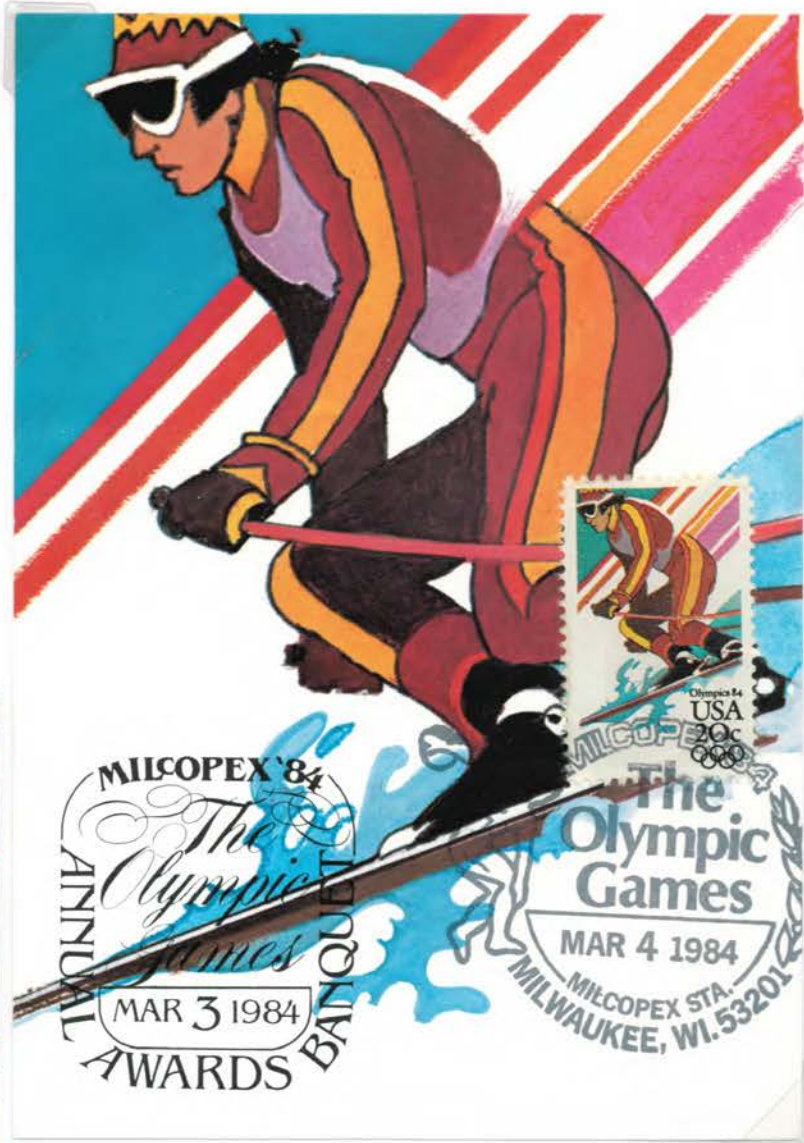


© UNITED STATES POSTAL SERVICE 1982

William F. Bolger
Postmaster General

III. Milcopex Banquet Favors

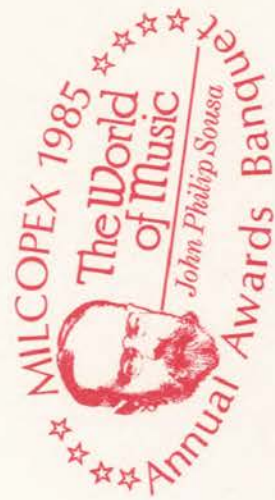
Milcopex 1984 (March 2-4)
Maxicards - U.S.P.S. Post Cards



III. Milcopex Banquet Favors

Milcopex 1984 (March 2-4)
Maxicards - U.S.P.S. Post Cards





MILCOPEX '85

MILWAUKEE, WISCONSIN



The Stars and Stripes Forever

March



John Philip Sousa

The Bureau of Engraving and Printing is pleased to issue this souvenir card in honor of MILCOPEX '85, the annual stamp exhibition of the Milwaukee Philatelic Society, March 1-3, 1985.

Reflecting the show theme of the World of Music on Stamps, the card highlights the noted American composer—conductor John Philip Sousa and an excerpt from his most famous composition “Stars and Stripes Forever.” Mr. Sousa and his band performed in the Auditorium, the site of MILCOPEX '85, on May 2, 1915.

The stamp, from the Famous Americans series issued in 1940, features a portrait of John Philip Sousa in an oval frame. The decorative border contains the pipes of Pan bound with a leather thong in the lower right corner and a spray of laurel in the lower left corner.



BUREAU OF ENGRAVING AND PRINTING, WASHINGTON, D.C.

The copying of this print is restricted by Title 18, U.S.C. which prohibits the unauthorized reproduction, in whole or in part, of currency, postage stamps, or other securities of the United States.

AMERIPEX '86

CHICAGO, ILLINOIS



In recognition of AMERIPEX '86, the 1986 International Philatelic Exhibition hosted by the United States, this souvenir card celebrates the 100th Anniversary of organized stamp collecting. The exhibition's theme is depicted by a vignette of a family organizing its stamp collection; and three stamps which feature Benjamin Franklin, known as the "Father of the U.S. Postal System." The family is representative of the "universal family" of stamp collectors. The featured stamps are:

- The 1¢ Franklin, issue of 1870, of which a portion is reproduced on the Ameripex '86 Commemorative Stamp;
- The 20¢ Treaty of Paris, issue of 1983, which honored the 200th Anniversary of the Treaty signed by Benjamin Franklin, John Adams, and John Jay; and
- The 8¢ Stamp Collecting, issue of 1972, which featured a reproduction of the first U.S. Stamp, the 5¢ Benjamin Franklin of 1847.



BUREAU OF ENGRAVING AND PRINTING, WASHINGTON, D.C.

20c Treaty of Paris commemorative stamp reproduced by permission. ©United States Postal Service 1983
The copying of this print is restricted by Title 18, U.S.C. which prohibits the unauthorized reproduction, in whole or in part, of currency, postage stamps, or other securities of the United States.

III. Milcopex Banquet Favors

Milcopex 1988



Copenhagen, Denmark
16-25 October, 1987



USA udgav dette dampskibsfrimærke over emnet "Hurtig søgående skibsfart" i 1901. Det havde den højeste værdi i serien, der blev udgivet det år i anledning af den Pan-Amerikanske Udstilling.

The United States issued this Steamship stamp, depicting "Fast Ocean Navigation," in 1901. It was the highest value of the series issued that year in honor of the Pan American Exposition.

USA's Postvæsen har den glæde at udgive dette souvenir kort med søgående skibe i anledning af HAFNIA '87.

The U.S. Postal Service is pleased to issue this souvenir card, featuring seagoing vessels, in honor of HAFNIA '87.

Dette frimærke blev udgivet af Danmark i 1976 som del af en serie til minde om 200-året for den Amerikanske Frihedskrig. Det havde den højeste værdi i serien, der var udgivet over emnet "Danske søgående skibe."

This stamp was issued by Denmark in 1976 as part of its series honoring the bicentennial of the American Revolution. This was the highest value of the series, which depicted Danish ocean-going vessels.



III. Milcopex Banquet Favors

Milcopex 1989



Toronto, Ontario, Canada
June 13-21, 1987



The United States issued this Buffalo stamp in 1923. It was the first U.S. regular issue to feature American Wildlife.

Ce timbre représentant un bison a été émis par les États-Unis en 1923. Il s'agit du premier timbre courant américain ayant pour sujet un animal sauvage.

The U.S. Postal Service is pleased to issue this souvenir card, featuring American Wildlife, in honor of CAPEX '87.

L'Administration postale des États-Unis est heureuse d'émettre cette carte-souvenir sur la faune américaine, en l'honneur de CAPEX '87.

This stamp was issued by Canada in 1981 as part of its Endangered Wildlife series. It depicts the Vancouver Island Marmot.

Ce timbre a été émis par le Canada en 1981 dans le cadre d'une série consacrée aux espèces menacées d'extinction. Il reproduit une marmotte de l'île de Vancouver.



©UNITED STATES POSTAL SERVICE 1987

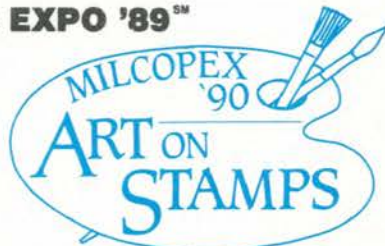


III. Milcopex Banquet Favors

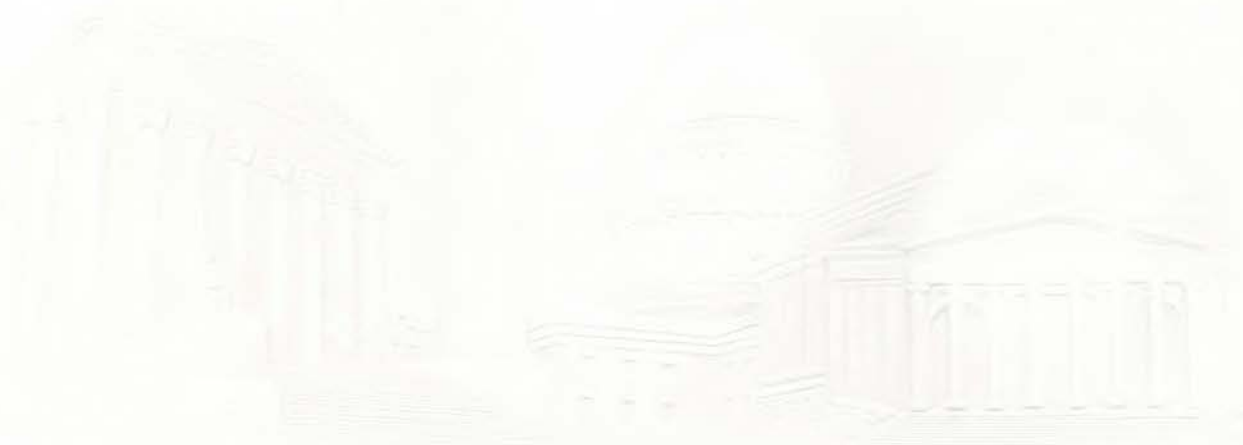
Milcopex 1990



WORLD STAMP EXPO '89SM



Annual
Awards
Banquet



III. Milcopex Banquet Favors

Milcopex 1991

Stamp World London 90



LONDON, ENGLAND

MAY 3-13, 1990



Rowland Hill introduced the uniform system of prepaid penny post in Great Britain with the issuance of the Penny Black in May 1840. The many advantages of using this system quickly became apparent, and all postal administrations worldwide eventually adopted the adhesive stamp format.

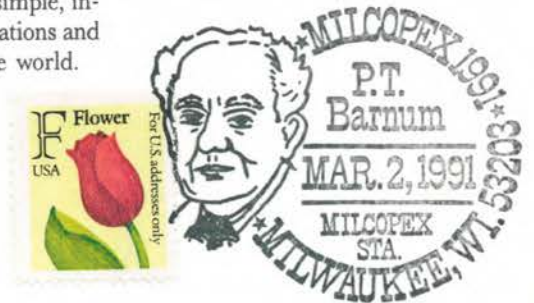
In July 1847, the United States government issued its first adhesive stamps, the 5-cent Benjamin Franklin and 10-cent George Washington issues. These stamps, and all the U.S. government stamps that were subsequently issued, superseded postmasters' provisionals and all other non-government issued stamps. The 5-cent rate prepaid postage for sending a letter up to 300 miles, and the 10-cent value was used for letters going further.



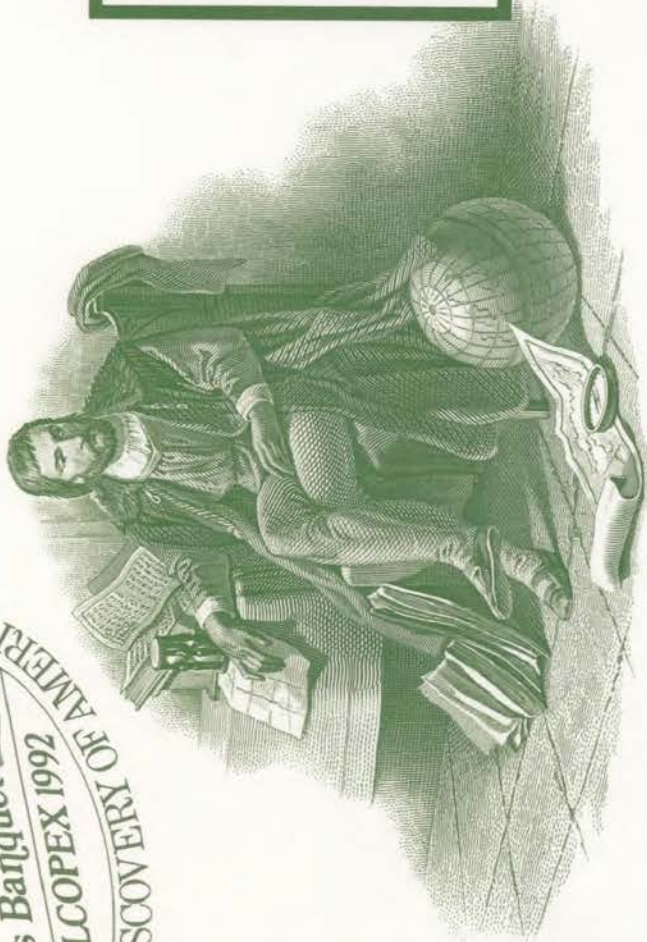
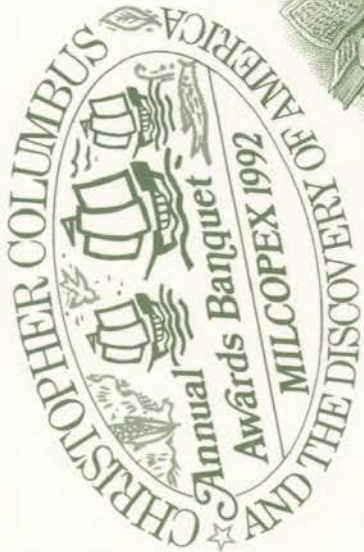
These stamps, and the billions of others that have been produced since their introduction, have provided a simple, inexpensive and effective means to promote communications and human understanding across a city and across the world.



© UNITED STATES POSTAL SERVICE 1990



DEPARTMENT OF THE TREASURY
BUREAU OF ENGRAVING AND PRINTING
WASHINGTON, D.C.



The vignette depicted in this block of engravings was adapted from an original die of the \$5 denomination of the 1893 Columbian Series postage stamps. That group was issued in conjunction with the famous 1893 Chicago World's Columbian Exposition held in honor of the 400th anniversary of the discovery of America by Christopher Columbus. The \$5 value of the series is among the rarer United States philatelic items inasmuch as there were only some 27,000 of that specific stamp released.

The central feature of the stamp was a medallion profile head of Columbus and was copied from the 50-cent silver coin authorized by Congress as a souvenir to be sold in support of the Exposition.

The tint used here is that of an enlargement of the vignette, "Columbus in His Study," engraved in 1869 by Henry Gugler, a member of the Bureau of Engraving and Printing's original engraving staff. That vignette has three times been featured in the designs of United States currency notes.

COMPEX 1973

CHICAGO, ILLINOIS — MAY 25-27



American Bank Note Company.

Established 1858

New York, N. Y.

Andrew Jackson served as the seventh President of the United States from 1829 to 1837. This stunning, full-face portrait, engraved for the National Bank Note Company circa 1860, was based on a miniature by John W. Dodge painted in 1842 at Jackson's Nashville, Tennessee home, *The Hermitage*.



The two-cent stamp, commonly referred to by collectors as the "Black Jack," was issued in 1863 and printed by the National Bank Note Company prior to its consolidation with the American Bank Note Company. The unique design, wherein the portrait dominates almost the entire stamp, has made it one of the most popular of all early United States issues.



MILCOPEX '94
Milwaukee Philatelic Society
Milwaukee, Wisconsin - March 4-6, 1994

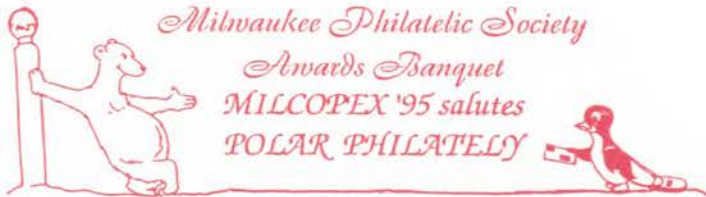
MILCOPEX AWARDS BANQUET
MILWAUKEE PHILATELIC SOCIETY, INC. 1986
ORIG. NOV. 5, 1986
A.P.S. #52 9886
MARCH 5, 1994
No. **006** of 120.

III. Milcopex Banquet Favors

Milcopex 1995



INDEPENDENCE HALL



BUREAU OF ENGRAVING AND PRINTING

Milwaukee Philatelic Society
Awards Banquet
MILCOPEX '97 salutes
POSTAL STATIONERY
September 20, 1997



The American Allegory

MILCOPEX

Milwaukee, Wisconsin
September 1997



The copying of this print is restricted by Title 18, U.S.C., which prohibits the unauthorized reproduction, in whole or in part, of currency, postage stamps, or other securities of the United States.



DWIGHT D. EISENHOWER

Milwaukee Philatelic Society
Awards Banquet
**MILCOPEX '98 SALUTES
AMERICAN HELEVETA PHILATELIC SOCIETY
SEPTEMBER 19, 1998**

A U.S. PRESIDENT OF SWISS-GERMAN ANCESTRY.

*The Milwaukee Philatelic Society
Salutes Military Postal History*



Awards Banquet - September 16, 2000

BUREAU OF ENGRAVING AND PRINTING

The copying of this price is restricted by Title 18, U.S.C., which prohibits the unauthorized reproduction in whole or in part, of currency, postage stamps, or other securities of the United States.

2000

*The Milwaukee Philatelic Society
Salutes Chinese Stamp Collecting*



Awards Banquet - September 20, 2003

BUREAU OF ENGRAVING AND PRINTING

The copying of this print is restricted by Title 18, U.S.C., which prohibits the unauthorized reproduction in whole or in part, of currency, postage stamps, or other securities of the United States.

**Michelangelo's "the Creation of Adam"
from the fresco on the ceiling of the Sistine Chapel**



Among the numerous countries that honored Michelangelo Buonarroti as a great painter, sculptor and architect, the United States Postal Administration issued on May 31, 1958 the commemorative stamp shown on this card as its contribution to the International Geophysical Year. The stamp was designed by Ervine Metzl and printed in itaglio on the Bureau of Engraving and Printing's Giori Press.

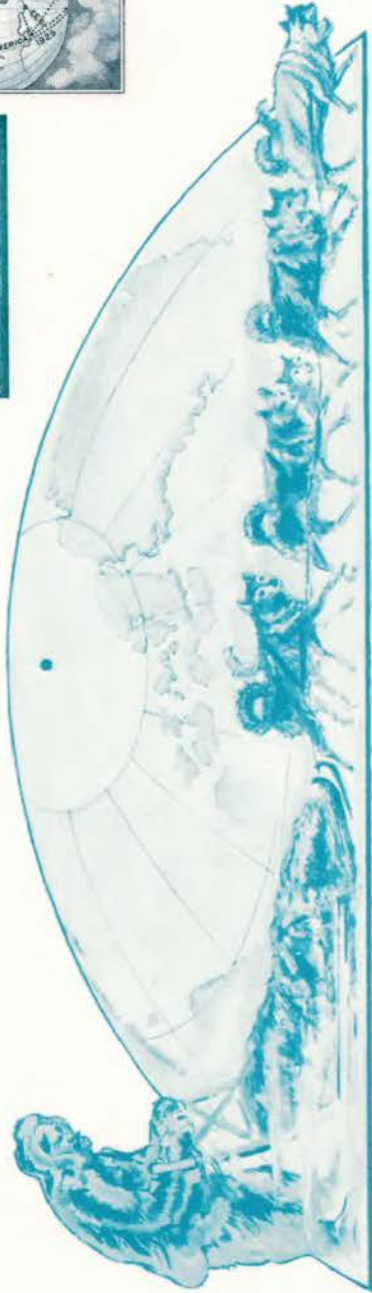
The design incorporates a detail from "the Creation of Adam", which is a panel from the fresco on the ceiling of the Sistine Chapel in the Vatican in Rome. Michelangelo was commissioned for this work by Pope Julius II in 1508, but it was not until 1524 that this monumental undertaking was completed. The Sistine Chapel is still today one of the great treasures of civilization.

This card shows the stamp twice the size in the original colors, the fresco panel is reproduced as burelage in its entirety. The red headline is a facsimile of Michelangelo's signature on the Pieta at St. Peter's in Rome. The Milwaukee Philatelic Society selected Michelangelo and the 500th anniversary of his birth as the theme for Milcopex '75, its annual exhibition, and pays homage to one of the greatest artists and philately with the issuance of this souvenir card.

DESIGNED AND EXECUTED BY K. L. BIRKHAIN EXCLUSIVELY FOR THE MILWAUKEE PHILATELIC SOCIETY AND MILCOPEX '75, HELD ON MARCH 7-9, 1975 AT THE PLANKINTON HOUSE, MILWAUKEE, WISCONSIN.

Souvenir Card and Cancellation
Design: Klaus Birkhain
Autographed by Designer

DEPARTMENT OF THE TREASURY
BUREAU OF ENGRAVING AND PRINTING
WASHINGTON, D.C.



This Polar Exploration theme souvenir card depicts vignettes from two United States postage stamps devoted to the Arctic and Antarctic.

The horizontal vignette at the top right was taken from the 4¢ Arctic Explorations Commemorative postage stamp issued in 1959 which marked the 50th anniversary of the arrival of Admiral Robert Edwin Peary at the North Pole. It also notes the history-making feat of the United States Navy's "Nautilus" almost 50 years later in making the first under-the-sea crossing at the North Pole.

The other vignette is taken from the 3¢ Little America postage stamp issued in 1933. It was used on letters mailed through the Little America post office, established at the base camp of the Admiral Richard E. Byrd Antarctic Expedition, in the territory of the South Pole. This stamp was sold at the Philatelic Agency of the Post Office Department; however, it was not distributed to post offices for sale to the general public.

The illustration depicted is from the original working model of the Arctic Explorations stamp.

MILCOPEX '77
MILWAUKEE PHILATELIC SOCIETY
MILWAUKEE, WISCONSIN MARCH 4-6, 1977

MILCOPEX '85

MILWAUKEE, WISCONSIN



The Stars and Stripes Forever March



The Bureau of Engraving and Printing is pleased to issue this souvenir card in honor of MILCOPEX '85, the annual stamp exhibition of the Milwaukee Philatelic Society, March 1-3, 1985.

Reflecting the show theme of the World of Music on Stamps, the card highlights the noted American composer – conductor John Philip Sousa and an excerpt from his most famous composition “Stars and Stripes Forever.” Mr. Sousa and his band performed in the Auditorium, the site of MILCOPEX '85, on May 2, 1915.

The stamp, from the Famous Americans series issued in 1940, features a portrait of John Philip Sousa in an oval frame. The decorative border contains the pipes of Pan bound with a leather thong in the lower right corner and a spray of laurel in the lower left corner.

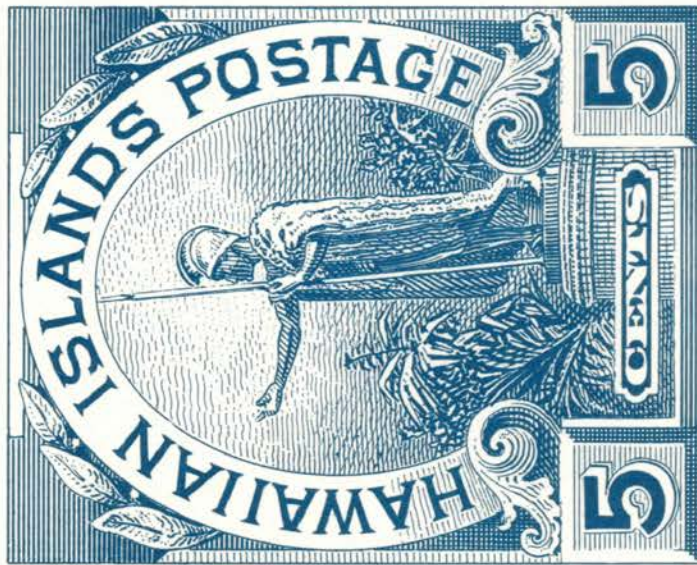


BUREAU OF ENGRAVING AND PRINTING, WASHINGTON, D.C.

American Bank Note Company

Established 1858

New York, N. Y.



Statue of King Kamehameha I

MILCOPEX '93

Milwaukee, Wisconsin

March 5-7, 1993

American Bank Note Company

Established 1858

New York, N. Y.



Andrew Jackson served as the seventh President of the United States from 1829 to 1837. This stunning, full-face portrait, engraved for the National Bank Note Company circa 1860, was based on a miniature by John W. Dodge painted in 1842 at Jackson's Nashville, Tennessee home, *The Hermitage*.

The two-cent stamp, commonly referred to by collectors as the "Black Jack," was issued in 1863 and printed by the National Bank Note Company prior to its consolidation with the American Bank Note Company. The unique design, wherein the portrait dominates almost the entire stamp, has made it one of the most popular of all early United States issues.



MILCOPEX '94

Milwaukee Philatelic Society

Milwaukee, Wisconsin - March 4-6, 1994



The American Allegory

MILCOPEX

Milwaukee, Wisconsin
September 1997

