



SUMMITS

PROJECT MANAGEMENT CONSULTANCY

“Innovation, Management to Design and Construction”





CONTENTS:

▲ About Us

▲ Vision & Mission

▲ Our services

▲ Modern methods of construction

▲ Selected Projects

▲ Companies' Alliances

▲ Organizational Structure

▲ Founders Biographies

▲ Official Documents





ABOUT US:

- ◆ SUMMITS PMC established in Cairo, Egypt 2019. We have 2 branches, one in Cairo and one in Jeddah, KSA.
- ◆ We are Architects and Engineers offering a clear vision of delivering projects that meet both the needs of clients and fulfill the very essence of sustainability.
- ◆ From client relations to turnkey, SUMMITS PMC team will be there to guide clients and their projects in every step of the way. As we provides all design, consulting, Construction management and construction supervision services.
- ◆ We in SUMMITS consider ourselves as one of the few Architects and Engineers offices who understand the dynamics of projects development in the region in light of implementing MMC (Modern Methods of Construction) technologies.
- ◆ Our Experience in developing and implementing Quality Systems (ISO) is the basic tenet of our consulting engineering services.
- ◆ Offering you our Value Engineering services through SAVE Value Methodologies with our innovative construction technologies, quality can have an enormous impact on reducing construction, operation and maintenance expenses.
- ◆ Our team has handled different kinds of projects such as public/government, Medical / Hospitals projects, Hotels, Educational Buildings, Housing, luxury Homes, etc.
- ◆ Feasibility studies can proficiently be provided with cooperation with our sister financial company "HSG".

VISION:

SUMMITS PMC believes the quality of our surroundings directly influences the quality of our lives. Inspiration can be found and derived from SUMMITS PMC allowing us to integrate our skills and present our clients with the ultimate sustainable business solution possible.

MISSION:

SUMMITS PMC engineering Consultancy Company delivers the full range of engineering and architectural design services with the aim of transforming the construction methods into the future.

SUMMITS PMC is committed to offer the latest state-of-the-art services to all projects throughout the whole project life-cycle. We are dedicated to deliver Client's needs by promising timely deadlines, while observing budgets and assuring quality.





OUR SERVICES:



Design:

Our Design Team expertise includes:

- Architectural design.
- Interior Design.
- Urban Design.
- Structural engineering.
- MEP Engineering.
- Landscape.



Construction Supervision:

Due to the fact that we are a diverse and highly skilled team, SUMMITS PMC is fully capable of more effectively and efficiently managing your projects in a timely manner within the allowed budget. Our Field services expertise includes:

- Construction Management.
- Supervision (Daily Inspection, Shop Drawings Review, Material Submittal Approval & Construction Progress Reports).
- implementing Quality Systems.



Engineering studies:

Engineering Studies is considered a part of science and technology studies (STS), and intersecting with the drawings and the engineering research, that can be delivered as:

- Prefeasibility and feasibility studies.
- Site and asset appraisals.
- Geotechnical studies.
- Energy saving studies.
- Environmental impact assessments.





OUR SERVICES:

Project Management:

By collaborating from the very start with the design department during the concept phase, our project management department is able to provide smoother services throughout the life cycle of the project. Our Project Management expertise includes:

- Design Management
- Design Review
- Planning and Scheduling
- Budgeting & Cost Management
- Contract Advisory/ Contract Administration
- Feasibility Studies
- Quantity surveying
- Value Engineering
- Bid packaging
- Procurement Strategy

MMC "Modern methods of construction":

We are specialized in supplying & applying various construction technologies that can meet the rising needs for high quality, easy, trusted and latest building materials & construction methods; to grow economies and to construct environments that improve the lives of communities. Which takes place through different partnerships between different technology providers in Europe, ensuring that all its services are provided with the utmost quality, in addition to the guaranteed certifications and trainings as well. As we can provide the following methods:

- Zenon panels.
- Pre-Cast 3D modular system.
- Non-Autoclaved aerated lightweight concrete "NAALC".
- Cold foaming steel/ Light gauged steel "LGS".

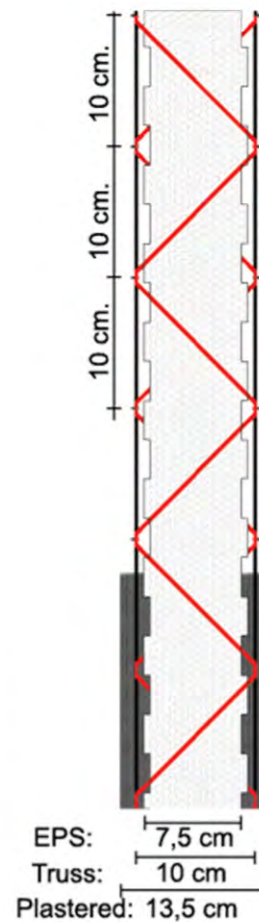


MODERN METHODS OF CONSTRUCTION:

Summits PMC in-line with KSA, Ministry Of Housing and its **Building Technologies Stimulation Program (BTSP)** orientation, is developing an easy-constructed housing units by applying state-of-the-art approved building technologies (3D Modular precast, Zenon Panels, Non-autolaved light weight concrete, Light gauged steel) to expedite the work and reduce the construction cost and time.

Zenon panels:

A concrete wall production system utilizing off-site prefabricated molds Single or Double Polystyrene Panels with steel mesh, concrete plastering both sides, is used as a structural composite panels to construct walls, floors and roofs. It is a modern building system, mostly preferred in terms of cost & speed efficiency in the single and 2-storey buildings, but for the 3, 4 or 5 stories structures, it is possible to place double layer panels, placing additional column sections & additional reinforcements where necessary.



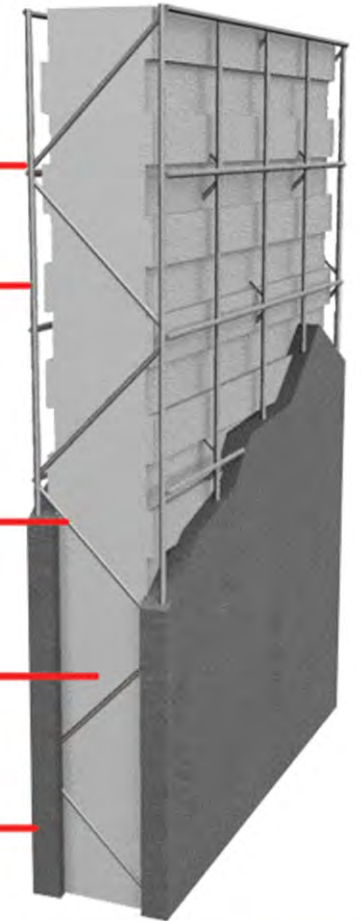
Special cage system that provides strength and rigidity
200 nodes per 1 m²
400 welding per 1 m²

SAE 1006 - Minimum 650 N/mm² tensile strength,
2,5 - 3,5 mm. diameter, low carbon dip galvanized steel wire

Continuous diagonals connecting wires among the panel on every 10 cm spans.

16 kg/m³ DIN B1 fire-proof class, not contain carcinogenic substances, E.P.S insulation material

Both sides are plastered with cement based mortar at wall application



MODERN METHODS OF CONSTRUCTION:

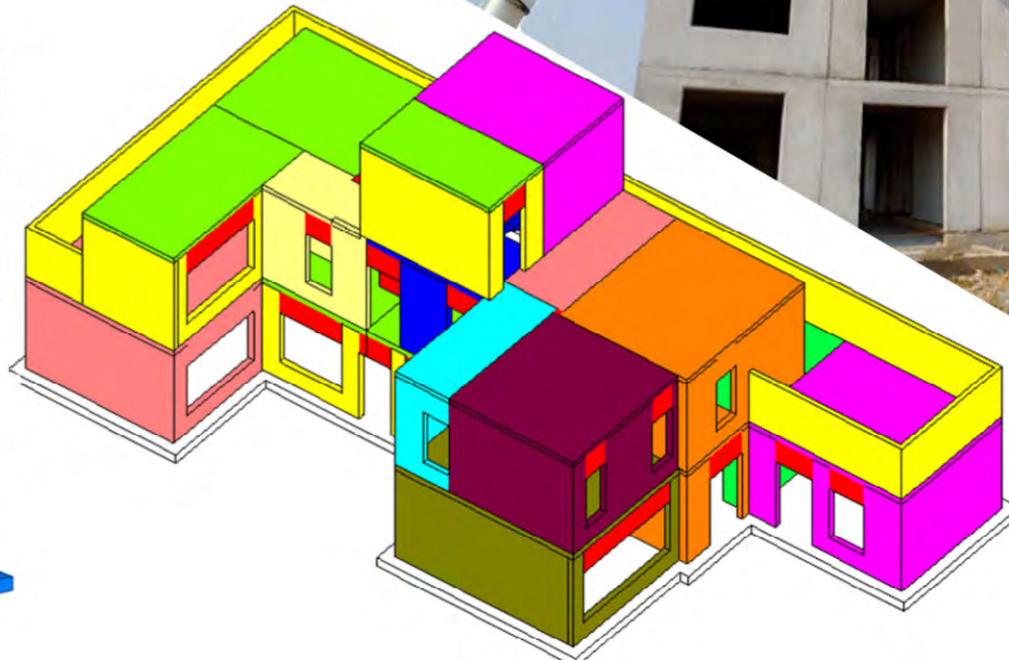
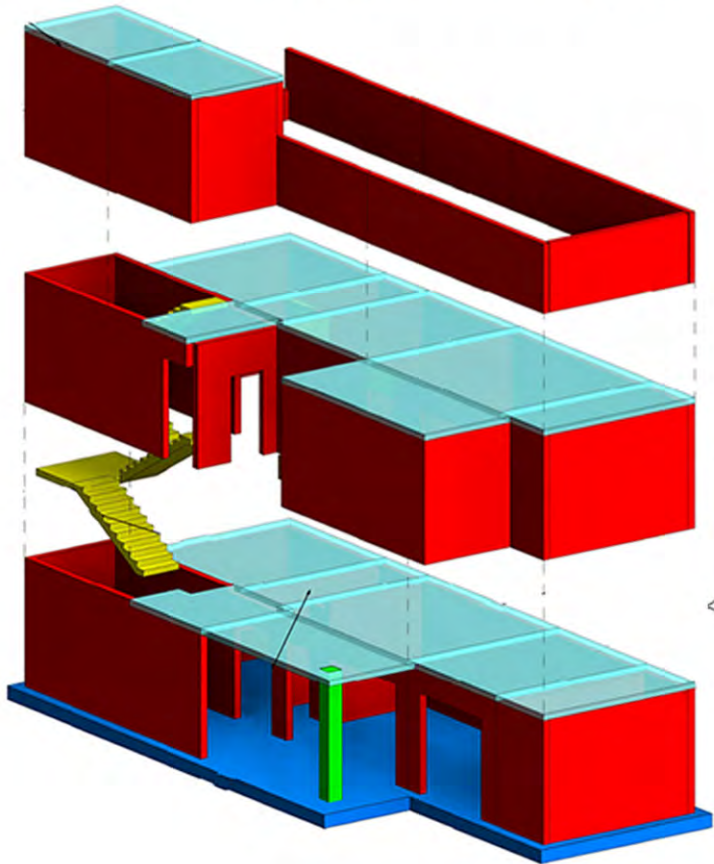
Zenon Panel can be described as an reinforced, thermal and sound insulated 3d lightweight panels. It can be used as vertical or horizontal panels. Also as bearing, non-bearing walls or as roof slabs. It is structured by a double layer of 3.5 mm high grade (6900) steel wire mesh connected by continuous diagonal wires, and an E.P.S. for sound and thermal insulation; as the expanded polystyrene EPS board inserted between the double layers of steel mesh. Zenon Panel has rigidity and tensile strength with 3D steel wire mesh system. Each 1 m2



MODERN METHODS OF CONSTRUCTION:

3D Modular precast:

3D Modular system is a highly integrated precasted modular construction system providing accurate manufactured concrete structure transported and erected in site, with a high-quality finish, reduces overall construction time & provides superior acoustic, thermal and fire rating properties within one process.



MODERN METHODS OF CONSTRUCTION:

3D Modular precast:



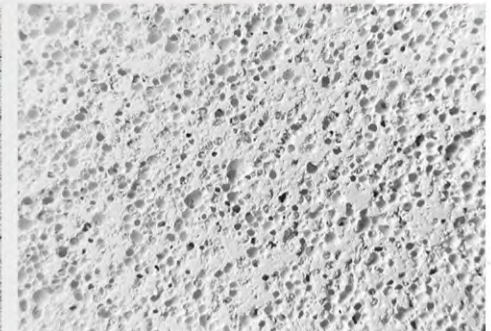
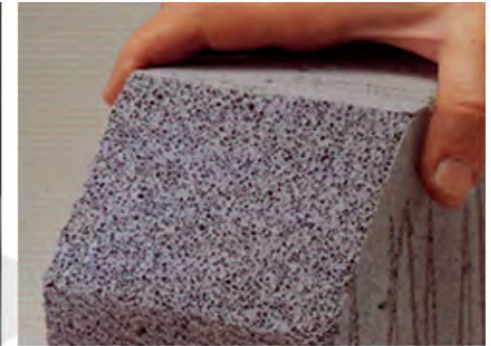
MODERN METHODS OF CONSTRUCTION:

Non-Autoclaved aerated concrete:

A Lightweight pre-casted concrete with air bubbles to generate low density and light weight material to produce Wall panels or Blocks additional reinforcements where necessary, offers fast, easy construction, superior strength, design flexibility and an incredibly low energy requirement for a remarkably high level of insulated comfort.

Light gauged steel:

Cold formed steel panels produced at the factory and shipped for installation onsite, with different composite sections.



HOSPITAL PROJECTS:

El-sadat city private hospital:

- ◆ **Location:** El-Sadat city, Menofeya, Egypt.
- ◆ **Owner:** Meamar for real-estate development & Project Management.
- ◆ **Number of beds:** less than 100 beds.
- ◆ **Built-up area:** 7100 sqm
- ◆ **Scope of work:** a) Initial studies & pre-concept stage.
b) Concept design.



HOSPITAL PROJECTS:

MAYA medical center :

- ◆ **Location:** Zayed Dunes, Shiekh Zayed, Giza, Egypt.
- ◆ **Client:** "D Consults" company
- ◆ **Consultant/ Designer:** Summits PMC.
- ◆ **Built-up area:** 1544 sqm



◆ **Scope of work:** Our team offers a preliminary study of investment alternatives based on market studies & detailed technical studies for the chosen alternative, in addition to the initial design & documents for licensing, medical planning work & consulting services, and documents for contractors.

Our company also is responsible for preparing integrated management & operation systems, including quality plans.

In addition to the implementation supervision & an economic feasibility study, approved by the Central Bank and the application file that will be submitted for the banks/financing authorities to obtain loan.



RESIDENTIAL PROJECTS:

Al-Mashreqeya project:

- ◆ **Location:** Al-Riyadh city, KSA.
- ◆ **Owner:** ADEEM Building company.
- ◆ **Built-up area:** a) Al-Khalil villa of 231 sqm.
b) IQ villa of 225 sqm.
c) OUJ villa of 169 sqm.
d) Rateel villa of 141 sqm.
e) Shurfa villa of 169 sqm.
f) Simple villa of 325 sqm.
- ◆ **Scope of work:** a) Developing operational manual for 3D modular framework casting process.
b) Developing all structural works and calculations needed for manufacturing & erecting building parts.
c) Developing all studies & comparisons needed to study how feasible 3D Modular technologies are.
d) Construction supervision.



RESIDENTIAL PROJECTS:

Al-Mashreqeya project:



RESIDENTIAL PROJECTS:

Green revolution private mini compound:

- ◆ **Location:** Green revolution area, Alexanria-Cairo desert road, Giza, Egypt.
- ◆ **Client:** Private villas.
- ◆ **Consultant/ Designer:** Summits PMC.
- ◆ **Total land area:** 10052 sqm
- ◆ **Scope of work:** a) All design works for all disciplines (Architectural, Structural, Mechanical and Electrical) starting from "concept" phase going through "schematic" and "detailed" designs to Construction documents. b) Construction supervision.



RESIDENTIAL PROJECTS:



RESIDENTIAL PROJECTS:

European countryside private villa:

- ◆ **Location:** Cairo–Alexandria desert road, Giza, Egypt.
- ◆ **Owner:** Private villa.
- ◆ **Total plot area:** 7163 sqm
Villa footprint: 250 sqm
- ◆ **Scope of work:** a) All design works for all disciplines (Architectural, Structural, Mechanical and Electrical) starting from “concept” phase going through “schematic” and “detailed” designs to Construction documents. b) Construction supervision.



RESIDENTIAL PROJECTS:

European countryside private villa:



RESIDENTIAL PROJECTS:

Royal Hills private villa:

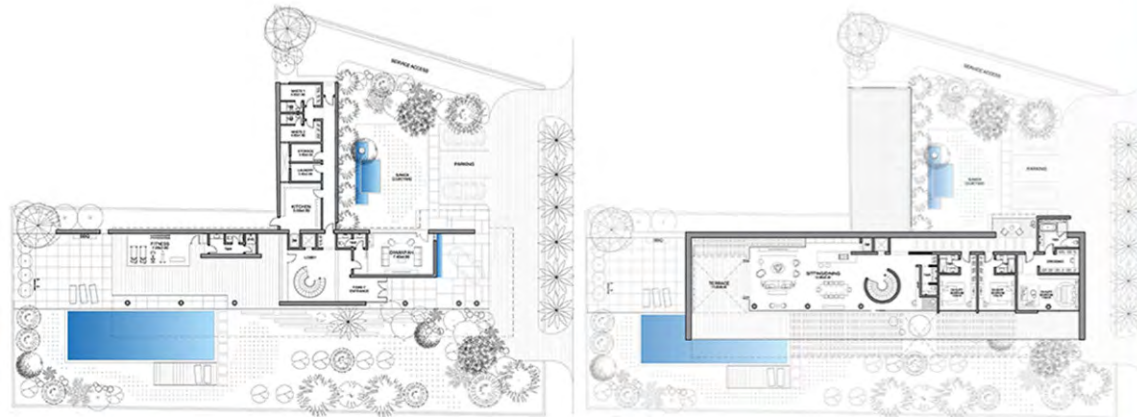
- ◆ **Location:** Royal Hills Compound, 6th of October, Giza, Egypt.
- ◆ **Client:** Private villa.
- ◆ **Consultant/ Designer:** Summits PMC.
- ◆ **Built-up area:** 950 sqm
- ◆ **Scope of work:** a) All design works for all disciplines (Architectural, Structural, Mechanical and Electrical) starting from "concept" phase going through "schematic" and "detailed" designs to Construction documents. b) Construction supervision.



RESIDENTIAL PROJECTS:

Al-Riyadh private villa:

- ◆ **Location:** Al-Wahah district, Riyadh, KSA.
- ◆ **Client:** UON Development & investment real estate company.
- ◆ **Consultant/ Designer:** Craft engineering consulting company.
- ◆ **Total plot area:** 1892 sqm
Built-up area: 686 sqm
- ◆ **Scope of work:** a)Preparing a Basis of Design report for all disciplines.
b)Developing the approved Architectural concept design.
c)Developing the approved Landscape concept design.



RESIDENTIAL PROJECTS:

The lantern project:

- **Location:** Northern Obhur, Jeddah, KSA.
- **Client:** UON Development & investment real estate company.
- **Consultant/ Designer:** Craft engineering consulting company.
- **Project components:** 66 Private villas with different prototypes according to plot's variations.
- **Total land area:** 23,524 sqm
Total built-up area: 31,206 sqm
- **Scope of work:** a) Preparing a Basis of Design report for all disciplines.
b) Developing the approved Architectural concept design.
c) Developing the approved Landscape concept design.

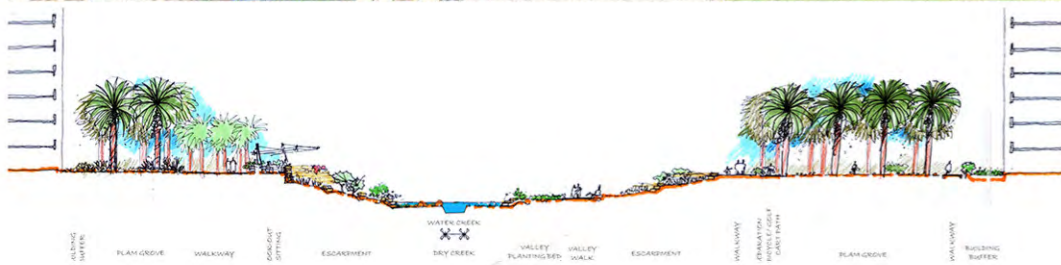




RESIDENTIAL PROJECTS:

Modon project:

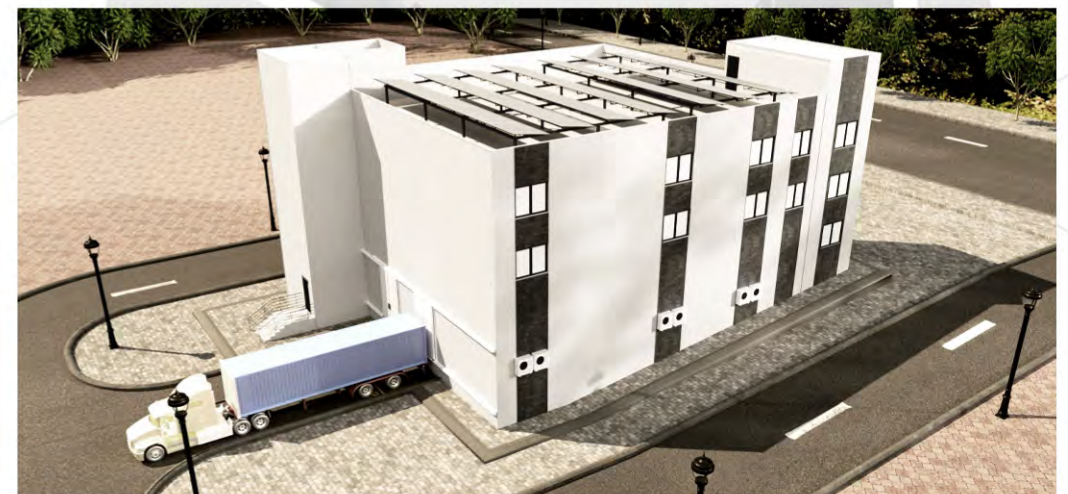
- **Location:** Jeddah, KSA.
- **Client:** Saudi Industrial property authority.
- **Consultant/ Designer:** CA+
- **Total land area:** 1.16 sqKm
- **Scope of work:** Subconsultant for CA+ for Design engineering works.



QUALITATIVE PROJECTS:

Cold Store Building 1:

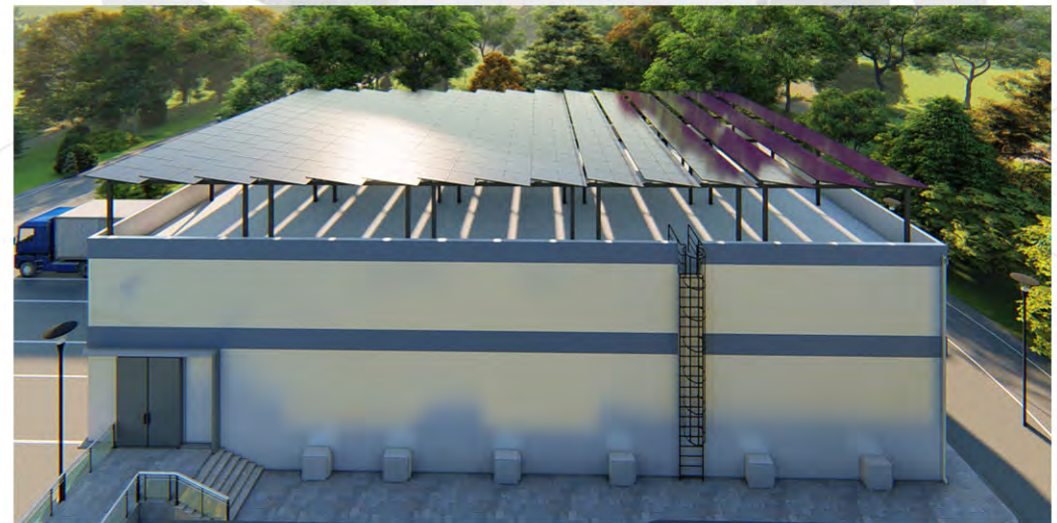
- ◆ **Location:** Alsalheya Elgdeeda, Sharqia Governorate, Egypt.
- ◆ **Client:** Private Mango Farm Owner.
- ◆ **Consultant/ Designer:** Summits PMC.
- ◆ **Built-up area:** 1972 sqm
- ◆ **Scope of work:** A cold-storage works on a refrigeration system that maintain an adequate temperature and environment as per the specifications of each item being stored. Several parameters was taken in consideration in its design of the four floors (basement, ground, first, second "Juice factory"). What makes this design Unique is being **GREEN Building**, by using solar pannels and **ZENON** pannels in the construction system.



QUALITATIVE PROJECTS:

Cold Store Building 2:

- ◆ **Location:** Alsalha Elgdeeda, Sharqia Governorate, Egypt.
- ◆ **Client:** Private Mango Farm Owner.
- ◆ **Consultant/ Designer:** Summits PMC.
- ◆ **Built-up area:** 480 sqm
- ◆ **Scope of work:** A cold-storage in the Farm land was designed 2021 according to several parameters to store the yearly fruits & vegetables after harvest.
This qualitative project designed to be **GREEN** "Environment friendly"; by using solar pannels as roofing to reduce electricity consumption and **ZENON** pannels in the construction system.





QUALITATIVE PROJECTS:

Bar N' Jar restaurant:

- ◆ **Location:** Galleria 40, Shiekh Zayed, Giza, Egypt.
- ◆ **Client:** (Bar "N Jar) Owner.
- ◆ **Consultant/ Designer:** Summits PMC.
- ◆ **Built-up area:** 120 sqm
- ◆ **Scope of work:** Bar N' Jar is a healthy Salad Station restaurant where you can find many different customized salads and yogurt parfait; loaded with vitamins, minerals and proteins. The design was based on the restaurant concept (health, fresh, & Light) look.





ALLIANCES:

(1)



ADEEM ALLIANCE
Innovative Building Technologies
Construction technologies housing projects KSA

(2)



Medical Support Investments Alliance Egypt

◆ **New scale of resources:**
we improve & expand resources of each firm in the alliance family.

New scale of resources

Enhancing competitiveness

◆ **Enhancing competitiveness:**
Gaps in the skill bases are filled by partnering with a company that has the missing skills. This avoids expending resources and the risks associated.

Entering new markets

◆ **Entering new markets:**

Strategic business alliances are effective ways of entering the markets off building Technologies . Partners can provide established marketing and the needed logistics, as well as knowledge of >how to deal with local constrains.

Setting new standards for technology

◆ **Setting new standards:**

Standards make markets, and by forming alliances targeting 3rd generation of building technologies we will establish in KSA new standards for Housing industry.

Capability for liability

◆ **capability for liability:**

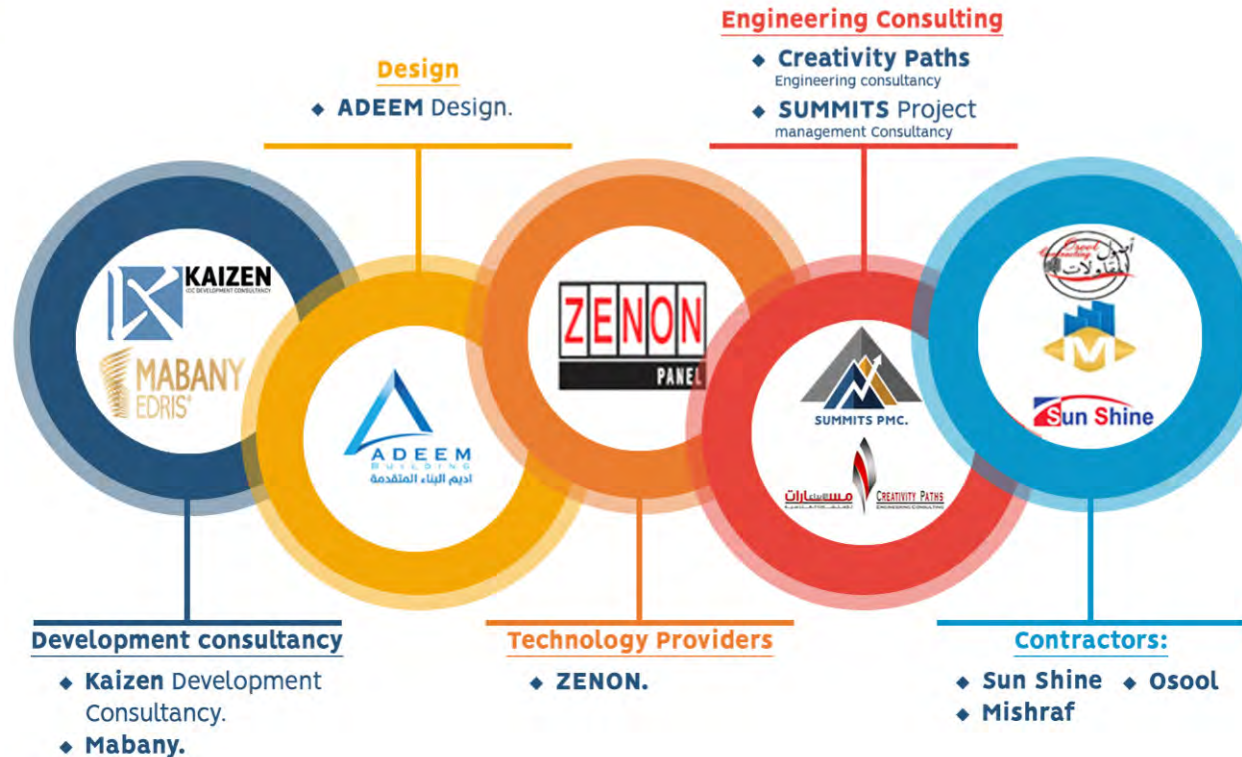
The alliance partners can actually lower liability issues if your complimentary skills increase your ability to delivery higher quality and therefore, a more thorough work product.

ALLIANCES:

ADEEM Alliance:

- ◆ It is an **Alliance** managed by an ambitious and creative board of 50+ years experience in design & construction, real estate development industry and project management.
- ◆ This **Alliance** has been established aiming to cover the market demands of the modern construction technologies, applications and solutions, as the alliance is targeting to expand the use of third generation technologies and nationalizing its new industries in Saudi Arabia.

Alliance Integration:



(1)



ADEEM ALLIANCE

Innovative Building Technologies



(2)



ALLIANCES:

Medical Investments Alliance:

Alliance Integration:



(2)

ALLIANCES:

Projects:

El-Kair Hospital:

- ◆ **Location:** Mansoura, Egypt.
- ◆ **Area:** 4500 sqm.
- ◆ **Year:** 2011.
- ◆ **Scope of work:** Developing and upgrading for the building and the medical equipment.



(Before upgrading)



(During work)



(After upgrading)

Medical Investments Alliance (All Doctor needs):

(2)



ALLIANCES:

Medical Investments Alliance:

Projects:

HVAC project.

• El- Nozha international hospital

- ◆ Renovation of operation room consist of five rooms complete with air handling unit, duct and pipe network.
- ◆ Renovation of old chilled water plant consist of Chillers 275 TR each, pumps and pipe network.
- ◆ Renovation of recovery rooms consist of two rooms complete with air handling unit, duct and pipe network.
- ◆ Renovation of lady operation suite consist of three rooms complete with air handling unit, duct and pipe network.
- ◆ New HVAC system for corridors in all building.



(2)



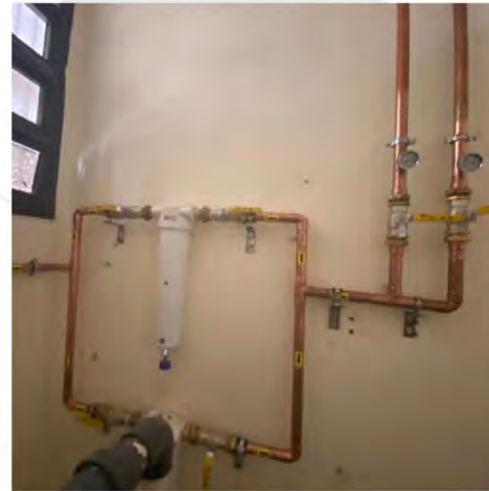
ALLIANCES:

Medical Investments Alliance:

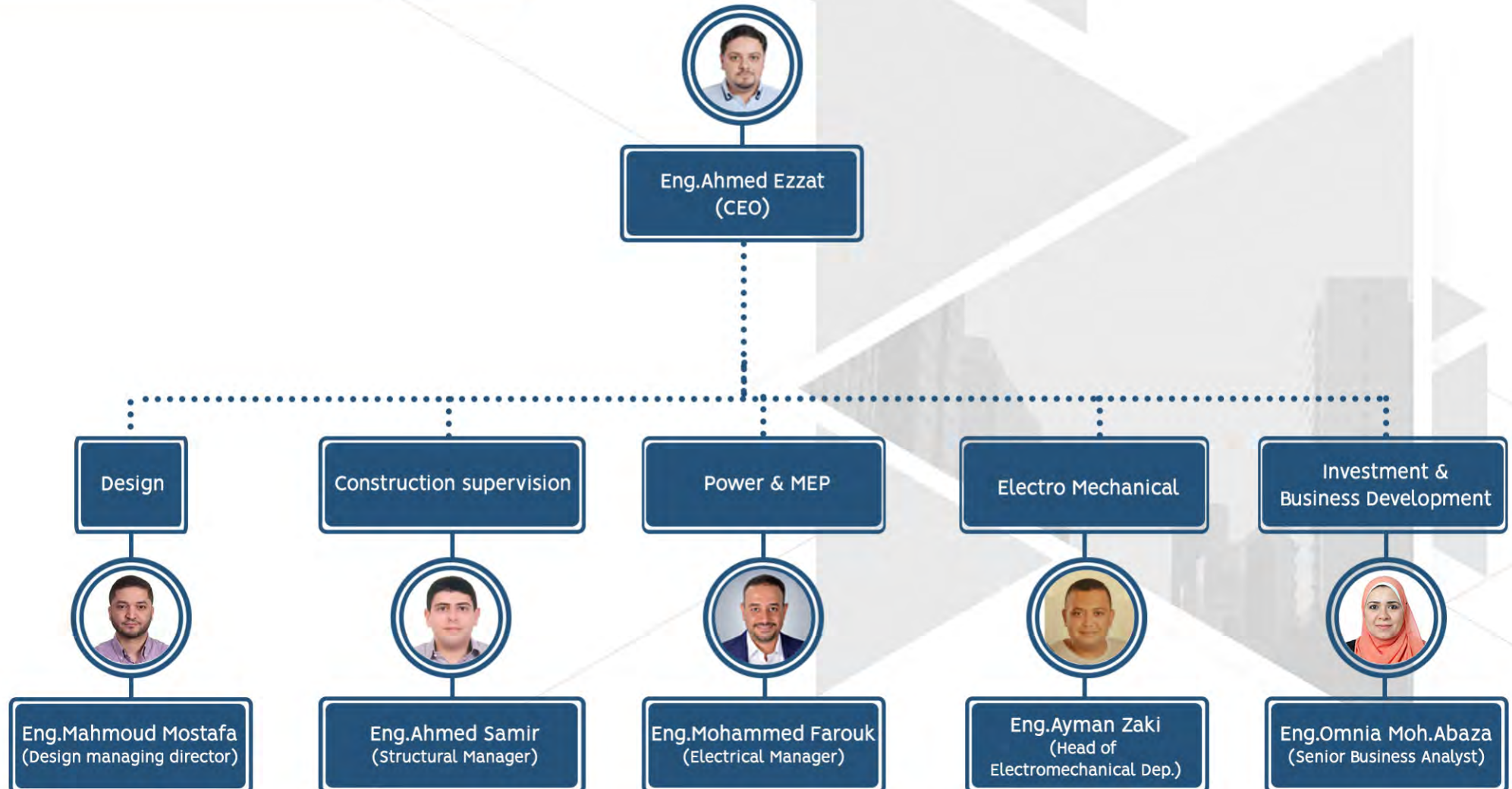
Projects:

• **Horse engineering work in alex.**

- ◆ **Al- Alameen hospital** as a complete HVAC system of hospital consist of five operation rooms work with D.X system.
- ◆ **Al- Amriya hospital** as a complete HVAC system of hospital consist of five operation rooms work with D.X system.
- ◆ **Image Mall** as a complete HVAC system of building consist of work with Air cooled chiller with capacity of 500 T.R system.
- ◆ **MISR Mall** sad zaghloul as a complete HVAC system of building consist of work with water cooled chiller with capacity of 350 T.R system.
- ◆ **Wady nile** head quarter as a complete HVAC system of building consist of work with Air cooled chiller with capacity of 360 T.R system.
- ◆ **DAR AYOUN hospital** as a complete HVAC system of building consist of work with water cooled absorption chiller with capacity of 180 T.R system.
- ◆ **SAMANOD hospital** as a complete HVAC system of building consist of work with water cooled absorption chiller with capacity of 360 T.R system.
- ◆ **SUGAR INSTITUTE hospital** phase (1) consist main chilled water plant of work with air cooled chiller with capacity of 320 T.R system.



ORGANIZATIONAL STRUCTURE:



FOUNDER BIOGRAPHY:



Eng. Ahmed Ezzat:

- ◆ **Co-founder & CEO** of "SUMMITS Project Management Consultancy Ltd." Company in Egypt.
- ◆ Professional experience in project management with a successful career development in various companies all ranked in the world top 50 international companies list according to "Engineering News-Record (ENR)", the last one was 10 years in **K&A (Khatib & Alami)**, Riyadh allocated in many positions ended with:
 - Program Manager for ministry of education (31 projects)**
 - program for ministry of justice (14 courts projects)**
- ◆ Specialized in **ISO 45001 & ISO 9001** as his programs and projects gained those certificates.
- ◆ Gained different **appreciation awards** from Tatweer Buildings Company (TBC) for his outstanding leadership in (42 schools & 19 Multi-Purpose Halls) Program as **construction supervision program manager, Jeddah**. Also he was honored an **appreciation certificate** from Riyadh Municipality for his remarkable efforts in developing and implementing the project management system there.
- ◆ **B.Sc.** degree in Architectural Engineering, Cairo university; specialized in "Economics and Technology of Architecture".
- ◆ Holds 6 certificates under a **professional program in project management (PRMG)** from the American University in Cairo (Project Bids and Contracts, Project Budgeting & Financial Control, Management of project resources, feasibility Study, Planning & control technique and Operation Management certificates)
- ◆ **PMP "Project Management Professional"** Certified, 2012.
- ◆ **International Arbitration Certificate**, 2015, from the International Arbitration Center/Faculty of law Aim Shams University.

PREVIOUS PROJECTS MANAGED BY CEO:

Program of 12 Projects (7 Courts & 5 Notaries):

- ◆ **Location:** Al-Madinah Al-Monawarah, KSA.
- ◆ **Owner:** Ministry of Justice, KSA.
- ◆ **Project management:** Dar Al-Handasah.
- ◆ **Role:** Program Manager (employed by K & A).
- ◆ **Scope of work:** Construction supervision.
- ◆ **Budget:** 100,000,000 USD
- ◆ **Project components:** 7 Courts & 5 Notaries.
- ◆ **Year:** 2017-2019.



PREVIOUS PROJECTS MANAGED BY CEO:

Program of 31 educational projects:

- ◆ **Location:** Jeddah, KSA.
- ◆ **Owner:** Tatweer holding CO.
- ◆ **Project management:** AECOM
- ◆ **Role:** Program Manager (employed by K & A).
- ◆ **Scope of work:** Construction supervision.
- ◆ **Budget:** 207,733,333 USD
- ◆ **Project components:** 31 Educational project.
- ◆ **Year:** 2015–2017.



PREVIOUS PROJECTS MANAGED BY CEO:

Administration centers program:

- ◆ **Location:** Al-Riyadh, KSA.
- ◆ **Owner:** Riyadh Municipality, KSA.
- ◆ **Role:** Program Coordinator (employed by K & A).
- ◆ **Scope of work:** Construction Supervision.
- ◆ **Budget:** 1 Billion SAR.
- ◆ **Year:** 2013-2015.



PREVIOUS PROJECTS MANAGED BY CEO:

Comprehensive Rehabilitation Centre (300 bed Recreation) + Yanbu Holiday inn renovation:

- ◆ **Location:** Yanbu, KSA.
- ◆ **Owner:** Ministry of social affairs, KSA.
- ◆ **Role:** Project coordinator (employed by **K & A**).
- ◆ **Scope of work:** Construction supervision.
- ◆ **Budget:** 100,000,000 SR
- ◆ **Project components:**
 - Two Dormitory Buildings
 - Main Building (Administration zone-Receptions zone-XRay Zone-Clinics Zone-Recreation Zone-2 Dining Halls-Kitchens Zone)
 - Multi-purpose hall Building.
- ◆ **Year:** 2010-2013.



Other BIOGRAPHIES:



Eng. Mahmoud Mostafa:

- ◆ **Design Managing Director** of "SUMMITS Project Management Consultancy Ltd." Company in Egypt.
- ◆ **Architect & Project Manager** with 20 years of experience in the Architecture, Engineering and Project Management fields.
- ◆ Certified as Project Management Professional (**PMP**).
- ◆ Licensed as a **Consultant in Project Management** from Egyptian Engineers Syndicate.
- ◆ Certified as **LEED Accredited Professional** in Building Design and Construction (LEED AP BD+C).
- ◆ Has considerable and varied experience in a wide variety of projects types such as Mixed-Use, Residential/Housing, Educational, Military, Religious, Touristic/Recreational and Hotels/Hospitality projects in Egypt, Jordan and Saudi Arabia.



Eng. Ayman Zaki:

- ◆ **Mechanical department head manager** in "SUMMITS Project Management Consultancy Ltd." Company.
- ◆ His experience gained along more than 15 years has been primarily in different mechanical mega projects.
- ◆ Eng. Ayman did projects with **GMS (General Mechanical Services)**; an electromechanical contractor company, he made different Electromechanically projects, HVAC items supply and install projects...
- ◆ **Eng. Ayman** worked in design, design review, preparing mechanical drawings & BOQ's, and drawings' review .



Eng. Mohammed Farouk:

- ◆ **Electrical Lead Design Engineer** of "SUMMITS Project Management Consultancy Ltd." Company in Egypt.
- ◆ He has over 18 years of experience in electrical design, Protection Testing & commissioning of substations in national and multi-national companies
- ◆ He has considerable and varied experience in project management, electrical design, in Egypt and Saudi Arabia.
- ◆ He currently leads the team of electrical engineers in Egypt and Saudi Arabia with a wide range of international projects, managing projects during all phases.

Other BIOGRAPHIES:



Eng. Ahmed Samir:

- ◆ **Civil Head Engineer** of "SUMMITS Project Management Consultancy Ltd." Company in Egypt.
- ◆ He has over 18 years of experience in Structural design, of substations in national and multi-national companies.
- ◆ He has considerable and varied experience in project management, Structural design, in Egypt and Saudi Arabia.
- ◆ He currently leads the team of Structural engineers in Egypt and Saudi Arabia with a wide range of international projects, managing projects during all phases.
- ◆ Certified as Project Management Professional (**PMP**).



Eng. Omnia Moh. Abaza:

- ◆ Omnia Abaza is a diligent GIS Business Analyst with nearly eleven years of experience in pre-sales, marketing, and basic sales work, specialized in developing a full Geospatial integrated systems, as well as the initiative in improving processes and identifying business opportunities. With an excellent academic profile and proven track record of invaluable experience in domestic and international projects.
- ◆ BSc of Architectural Engineering from Cairo University 2005.
- ◆ ITI Diploma, 2006 specialized in GIS field in the Information Technology Institute (ITI), switching her career as she always wanted a career that mixes the technical knowledge with a business aspect.
- ◆ Joined Esri NeA (ESRI Northeast Africa) in 2006 as a presales engineer. She played an important role helping her Company (EsriNeA) to become the 1st CMMI certified GIS company in the region; by operating the highest business standards through a highly professional methodology in implementing and delivering solutions.
- ◆ Working as a free-lancer having various tasks, with different firms such as the World Food Program (WFP).

OFFICIAL DOCUMENTS:

Commercial record:



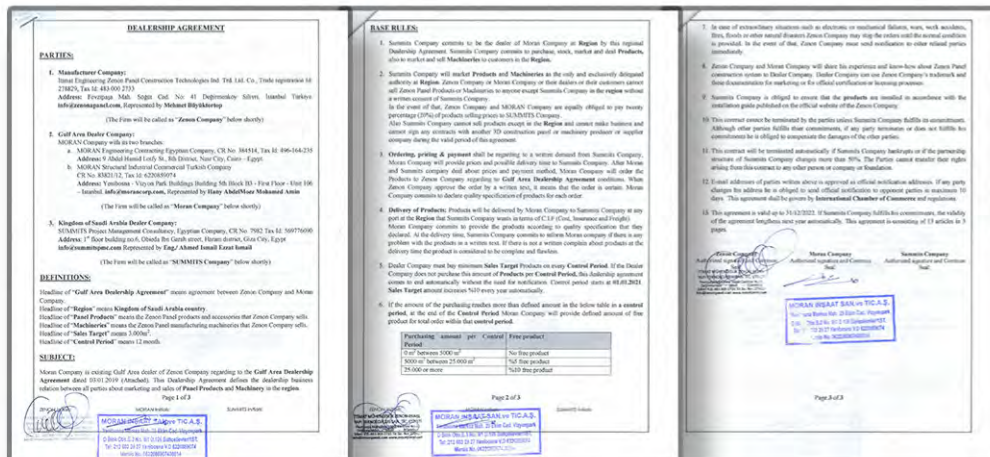
Document showing commercial records, including tax and financial data, with Arabic text and official stamps.

Taxes record:



Document showing tax records, including company name (Summits PMC Ltd), tax identification number (572), and other financial details. The document is in Arabic and includes the logo of the Ministry of Finance.

Zenon Dealership agreement:



Document showing the Zenon Dealership Agreement, including terms and conditions, definitions, and subject matter. The document is in English and includes official stamps and signatures.

Contractor certificate:



Document showing the Contractor Certificate, including the date (July 31, 2020) and the name of the contractor (MORAN BILADIR SAN VA TIC A.S.). The document is in English and includes official stamps and signatures.

OFFICIAL DOCUMENTS:

ADEEM Cooperation Agreement:



Sunshine Framework Agreement:



Consultant Certificate:





www.summitspmc.com

Cairo Branch

Address: 62 Al-Tahrir st., Al-Dokki, Giza, Egypt.

Mobile no.: +2 011 5636 1390

Telephone no.: +202 376 121 19

Postcode no.: 12311

KSA Branch

Address: Al Imam Abdul Aziz St.,
Al Faisaliyah, SADEN Building, Fourth Floor,
Office no. 105, Jeddah, KSA.

Mobile no.: +966 5414 72 897

Postcode no.: 7411

Instagram: Summits PMC

Facebook: <https://www.facebook.com/Summits-PMC-Ltd-company-105529561599146/>