

# LIQUID IMAGINATION

EDWARD LENTSCH



# *LIQUID IMAGINATION*

*BY EDWARD LENTSCH*

*THE TRANSFORMATION OF A PAINTING IS LIKE LIQUID IMAGINATION FLOWS FROM THE FORCE  
A SPIRIT BOLDLY GOING TO THE QUIET PLACE  
OF BLISSFUL PURPOSE.*

# LIQUID IMAGINATION





*Lentsch's work has the pathos of Rembrandt, and the atmosphere of Kiefer.*

Tonya Turner  
Turner Carroll Gallery Santa Fe, NM

## EDWARD LENTSCH

American born April 14, 1959 California

Working in mixed media on canvas, Lentsch's monumental sized works exhibit unique surfaces and refined textures while also reflecting a contemplative element of alchemy and spiritual introspection.

The spiritual overtones of Lentsch's painting are captured by his titles, where he uses mystical images and esoteric subjects to inspire the imagination of his viewer. His titles are compelling as he reaches for what he refers to as a "dialog that defines synectics..." (a concept first coined by Buckminster Fuller --20th century visionary inventor.) Wikipediacontributor William Gordon describes synectics as: a problem solving approach that stimulates thought processes of which the subject is generally unaware. He describes this method as, "Trusting things that are alien, and alienating things that are trusted." In Lentsch's work he often pairs paintings with titles that attempt to explain this idea of synectic reason by connecting a vast matrix of complex relationships between science and mysticism and the metaphysical and spiritual.

*"My work is about human potential and consciousness. My passion for painting is intertwined with a passion for science and learning; logic and mathematics, mysticism and mastery."*

EDWARD LENTSCH  
APRIL 2015



Liquid Imagination  
70x120 inches





Rama's Bridge  
68x108 inches





Atlas Obscura  
90x60 inches



Ciudad Blanca  
60x90 inches





The Blizzard Stone Part I  
43.5x43.5 inches each



The Blizzard Stone Part II  
43.5x43.5 inches each





Liquid Underground  
72x48 inches



The Blue Phoenix  
70x50 inches





Gracias a Dios  
70x50 inches



The Simpson Rule  
60x90 inches





Kermes Vermilio  
46x46 inches framed





Mohenjo-Daro  
43x35 inches



Harappa  
43x35 inches





The Caves of Ajanta Part I&II  
43x35 inches each







Anatoila  
72x48 inches



The Poem is a Dream  
72x48 inches





The Ishtar Gate  
43.5x43.5 inches



Diotima of Mantinea  
60x50 inches





Simpsons Paradox  
60x60 inches



The Adjacent Positive  
70x42 inches



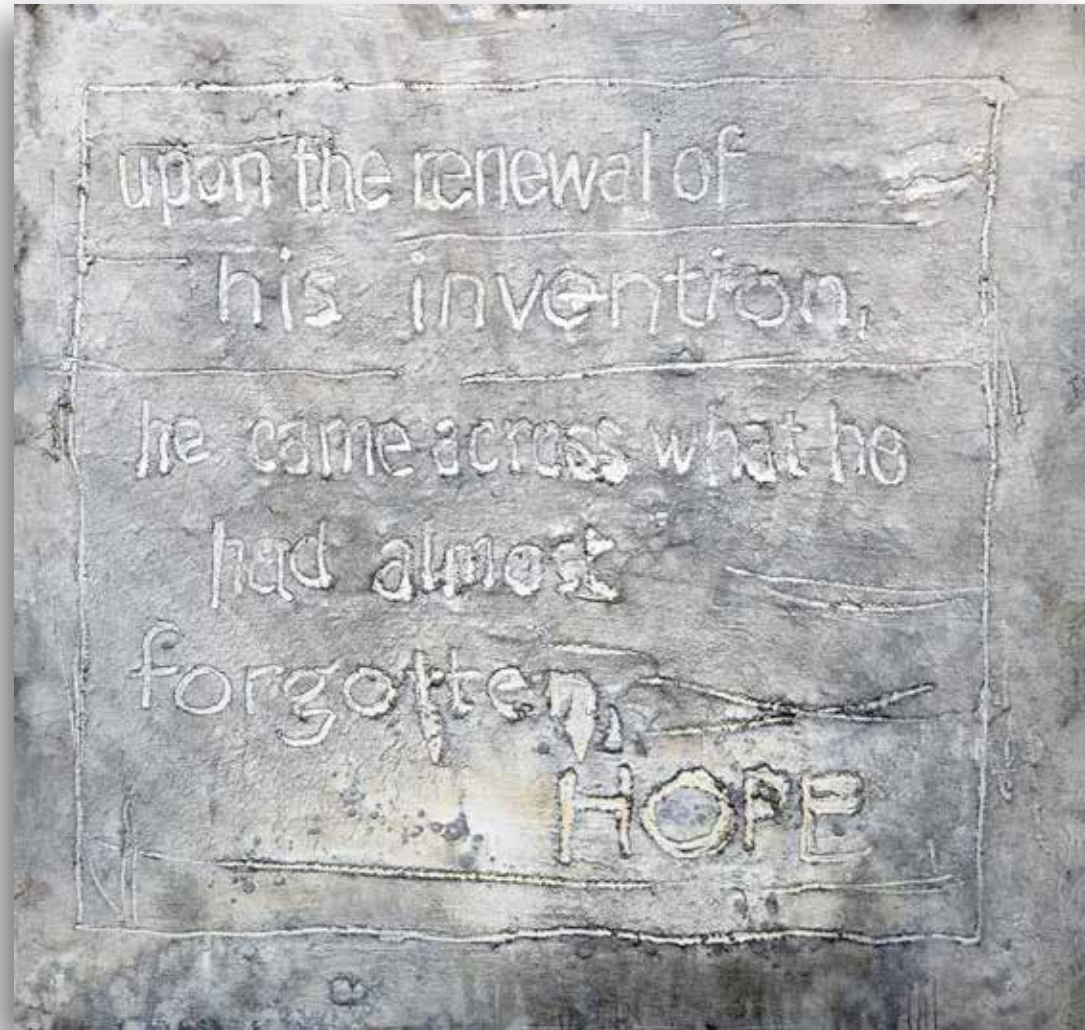


Raging Fires of the Sun  
66x43 inches



The Variscite Stone  
46x34 inches





Reckless the Recluse  
72x76 inches each





The Blue Lotus and the Butterfly  
47 inch diameter framed



The Unsolvable Equation  
70x100 inches





Mystery of the Blue Lotus  
46x76 inches



Do Not Swear by the Moon  
75 inches diameter framed





The Silent Circle of Peace  
72x60 inches



Athena  
68x52 inches





I Dream of Africa  
66x88 inches

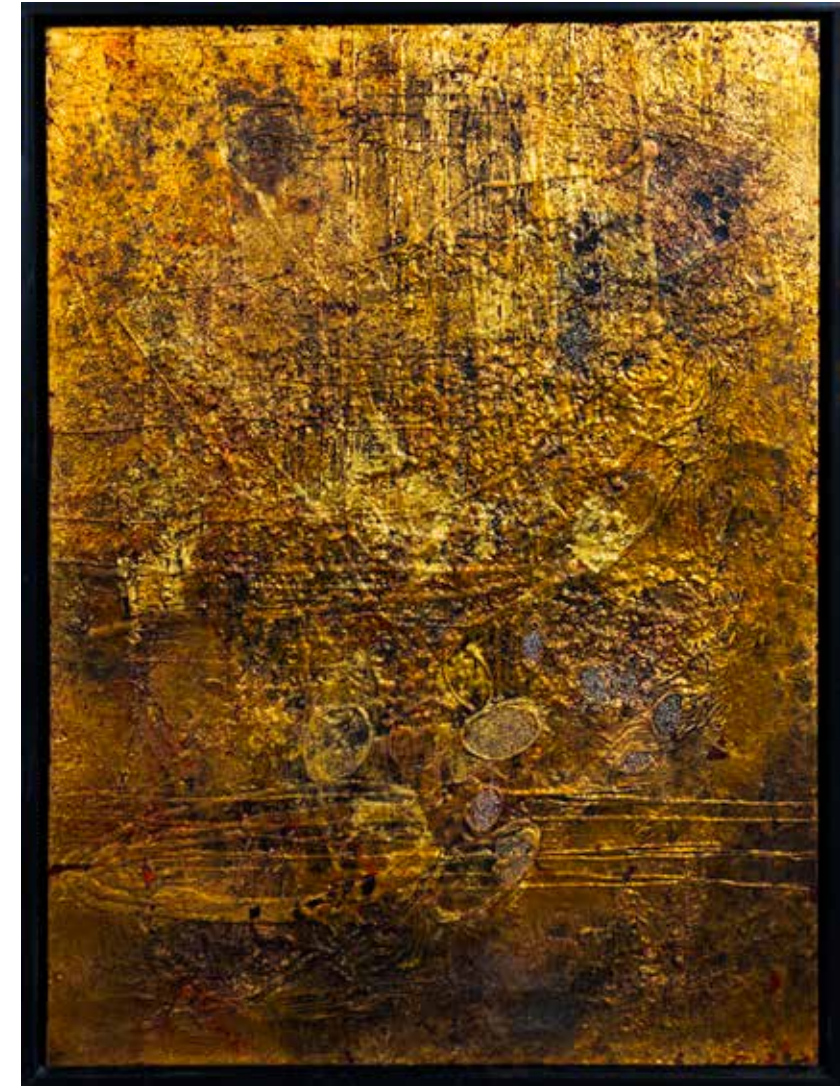


The Coral Sunset  
60x90 inches





The Golden Butterfly  
32 inches



The Miracle of Watermelon  
55x40 inches





Handwritten signature in white ink, possibly reading "Handwritten" or a similar name.