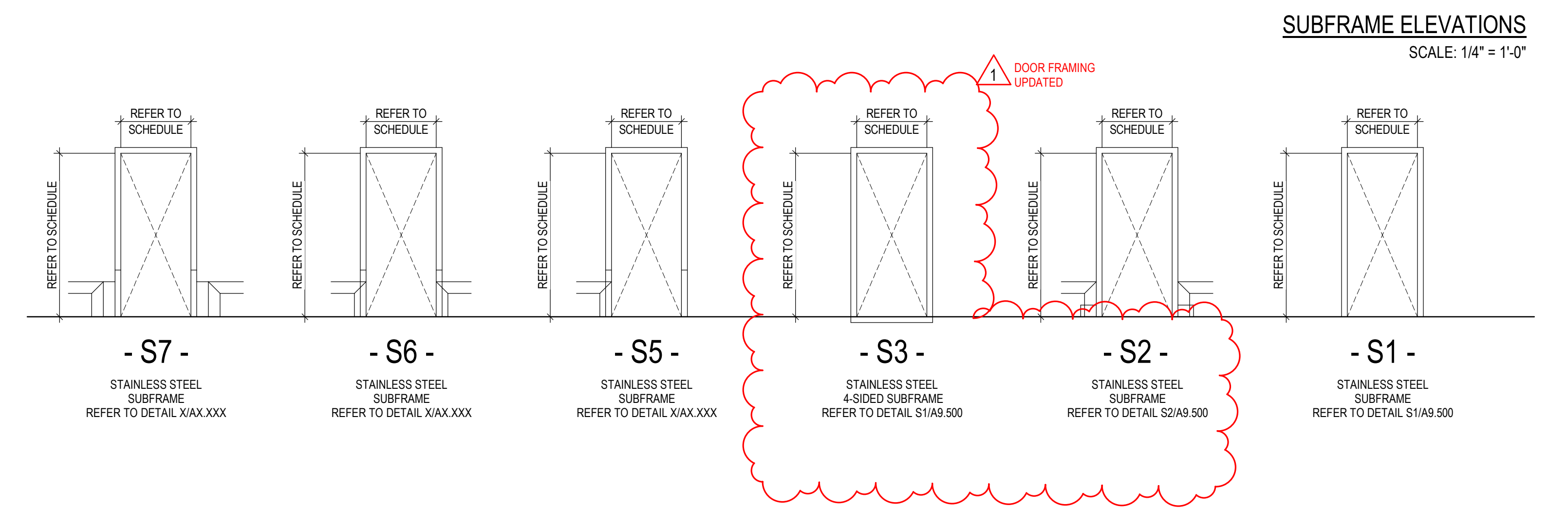
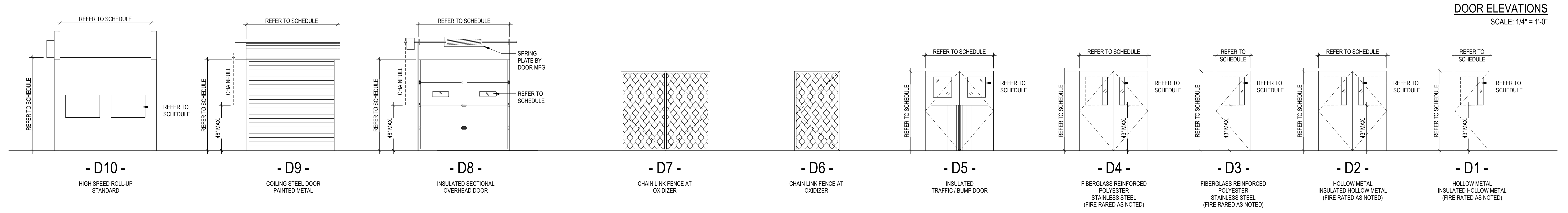
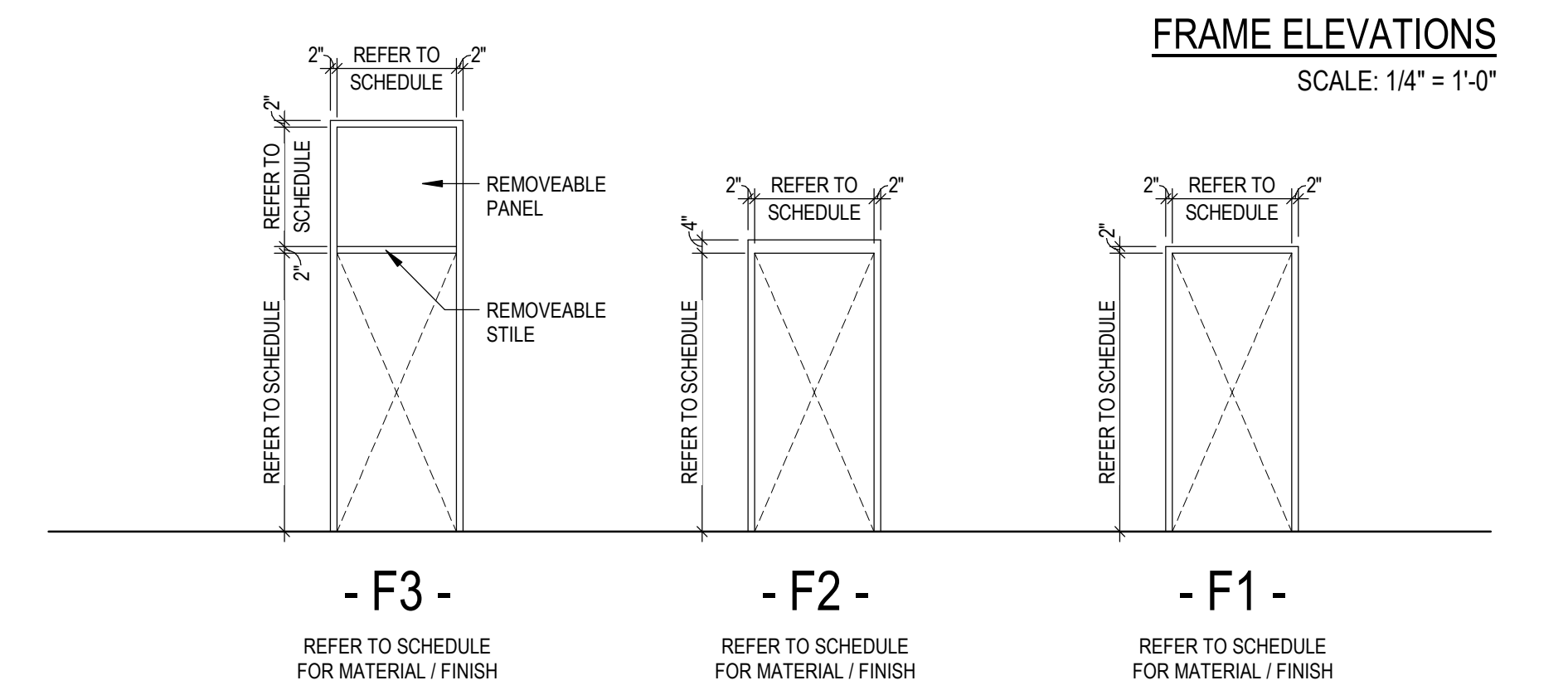




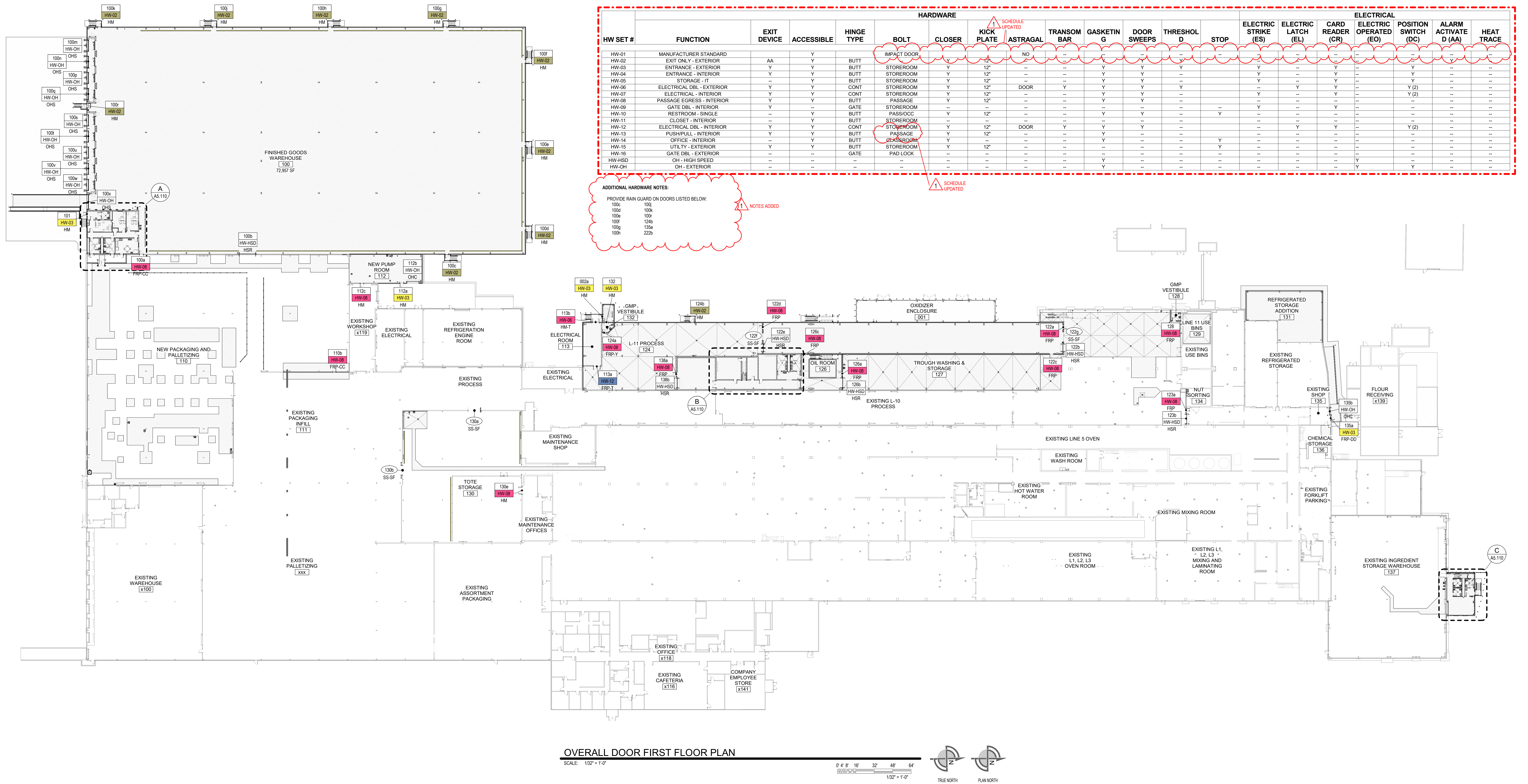


# DOOR AND FRAME ELEVATIONS



DOOR NOTES	HARDWARE NOTES																																									
<ol style="list-style-type: none"> <li>1. PAINT ALL HOLLOW METAL DOORS AND FRAMES WITH A PRIMER AND A FAST DRY ALKYL (SATIN) ENAMEL PAINT. MINIMUM OF 2 COATS.</li> <li>2. ALL STAINLESS STEEL FRAMES TO BE TYPE 304 WITH #4 FINISH. WITH CONT. WELDS. GRIND AND POLISH ALL WELDS SMOOTH.</li> <li>3. ALL EXTERIOR MAN-DOORS TO BE FULLY WEATHERSTRIPPED, CALKED, AND PROVIDED WITH ADA ACCEPTABLE ALUMINUM THRESHOLDS SET IN FULL BED OF SEALANT.</li> <li>4. ALL MAN DOOR FRAMES TO HAVE SILENCERS WHERE NO WEATHER STRIPPING IS REQ'D. MINIMUM OF 3 PER SIDE.</li> <li>5. MAXIMUM EFFORT TO OPERATE EGRESS DOORS SHALL NOT EXCEED 5 LBS FOR EXTERIOR AND INTERIOR DOORS. ALL FIRE DOORS SHALL NOT EXCEED 15 LBS. MAXIMUM PRESSURE TO OPERATE DOORS.</li> <li>6. THE BOTTOM 10" OF ALL DOORS EXCEPT AUTOMATIC AND SLIDING SHALL HAVE A SMOOTH UNINTERRUPTED SURFACE TO ALLOW THE DOOR TO BE OPENED BY A WHEELCHAIR FOOTREST WITHOUT CREATING A TRAP OR HAZARDOUS CONDITION. WHERE NARROW FRAMED DOORS ARE USED A 1" HIGH SMOOTH PANEL SHALL BE INSTALLED ON THE PUSH SIDE OF THE DOOR, WHICH WILL ALLOW THE DOOR TO BE OPENED BY A WHEELCHAIR FOOTREST WITHOUT CREATING A TRAP OR HAZARDOUS CONDITION.</li> <li>7. ALL VISION PANEL TO BE 1/4" ABRASION RESISTANT POLYCARBONATE. NO GLASS WILL BE ALLOWED. CERAMIC GLASS SHALL BE USED IN RATED ASSEMBLIES.</li> </ol>	<ol style="list-style-type: none"> <li>1. CONTRACTOR SHALL PROVIDE FULL HARDWARE SCHEDULE FOR EACH DOOR FOR ARCHITECT'S REVIEW PRIOR TO ORDERING. ALL HARDWARE SHALL BE PER THE 2012 INTERNATIONAL BUILDING CODE AND SHALL BE ADA COMPLIANT.</li> <li>2. REFER TO DOOR HARDWARE SPECIFICATION 08 71 00 FOR HARDWARE INFORMATION.</li> </ol>																																									
	ELECTRIC HARDWARE LEGEND																																									
	<p>C DOOR CONTACT                      CR CARD READER                      ES ELECTRIC STRIKE/DOOR LATCH RELEASE, 120V                      EO ELECTRIC MOTOR OPERATOR                      MD MOTION DETECTOR                      PB PUSH BUTTON</p>																																									
ABBREVIATIONS	CONTRACTORS																																									
<table style="width: 100%; border: none;"> <tr> <td style="width: 33%;">CW CURTAIN WALL</td> <td style="width: 33%;">PNT PAINT</td> <td style="width: 33%;"></td> </tr> <tr> <td>EXIST EXISTING</td> <td>POLY POLYCARBONATE</td> <td></td> </tr> <tr> <td>FPC FOAMED POLYISO CORE</td> <td>RMB REMOVABLE TRANSOME</td> <td></td> </tr> <tr> <td>FRP FIBERGLASS REINFORCED PLASTIC</td> <td>SS STAINLESS STEEL - TYPE 304, #4 FINISH</td> <td></td> </tr> <tr> <td>FAB PVC FABRIC</td> <td>STL STEEL</td> <td></td> </tr> <tr> <td>GALV GALVANIZED STEEL</td> <td>UHMW ULTRA HIGH MOLECULAR WEIGHT POLYETHYLENE</td> <td></td> </tr> <tr> <td>HM HOLLOW METAL</td> <td>WD WOOD</td> <td></td> </tr> <tr> <td>MFG. STD. MANUFACTURER'S STANDARD</td> <td></td> <td></td> </tr> <tr> <td>PART PARTITION</td> <td></td> <td></td> </tr> <tr> <td>PF PRE-FINISHED BY MANUFACTURER</td> <td></td> <td></td> </tr> <tr> <td>PLAS CROSS-LINKED POLYETHYLENE</td> <td></td> <td></td> </tr> </table>	CW CURTAIN WALL	PNT PAINT		EXIST EXISTING	POLY POLYCARBONATE		FPC FOAMED POLYISO CORE	RMB REMOVABLE TRANSOME		FRP FIBERGLASS REINFORCED PLASTIC	SS STAINLESS STEEL - TYPE 304, #4 FINISH		FAB PVC FABRIC	STL STEEL		GALV GALVANIZED STEEL	UHMW ULTRA HIGH MOLECULAR WEIGHT POLYETHYLENE		HM HOLLOW METAL	WD WOOD		MFG. STD. MANUFACTURER'S STANDARD			PART PARTITION			PF PRE-FINISHED BY MANUFACTURER			PLAS CROSS-LINKED POLYETHYLENE			<table style="width: 100%; border: none;"> <tr> <td style="width: 50%;">GT GENERAL TRADES</td> <td style="width: 50%;"></td> </tr> <tr> <td>LDE LOADING DOCK EQUIPMENT</td> <td></td> </tr> <tr> <td>SD SPECIALTY DOORS</td> <td></td> </tr> <tr> <td>OH OVERHEAD DOORS</td> <td></td> </tr> </table>	GT GENERAL TRADES		LDE LOADING DOCK EQUIPMENT		SD SPECIALTY DOORS		OH OVERHEAD DOORS	
CW CURTAIN WALL	PNT PAINT																																									
EXIST EXISTING	POLY POLYCARBONATE																																									
FPC FOAMED POLYISO CORE	RMB REMOVABLE TRANSOME																																									
FRP FIBERGLASS REINFORCED PLASTIC	SS STAINLESS STEEL - TYPE 304, #4 FINISH																																									
FAB PVC FABRIC	STL STEEL																																									
GALV GALVANIZED STEEL	UHMW ULTRA HIGH MOLECULAR WEIGHT POLYETHYLENE																																									
HM HOLLOW METAL	WD WOOD																																									
MFG. STD. MANUFACTURER'S STANDARD																																										
PART PARTITION																																										
PF PRE-FINISHED BY MANUFACTURER																																										
PLAS CROSS-LINKED POLYETHYLENE																																										
GT GENERAL TRADES																																										
LDE LOADING DOCK EQUIPMENT																																										
SD SPECIALTY DOORS																																										
OH OVERHEAD DOORS																																										

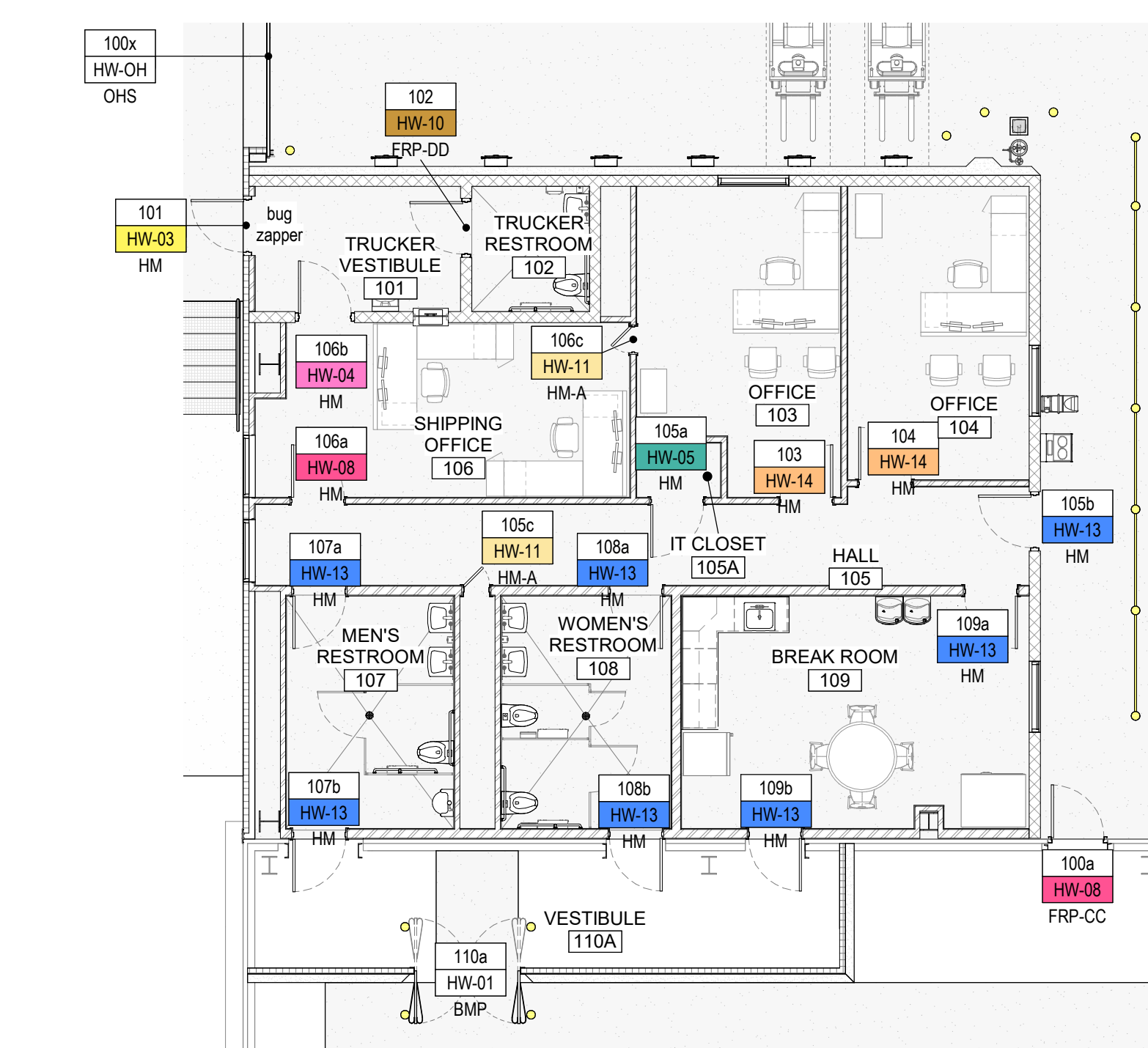
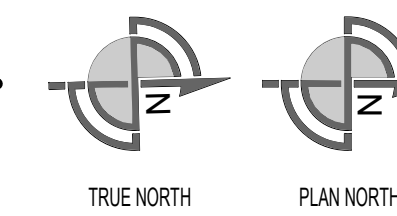




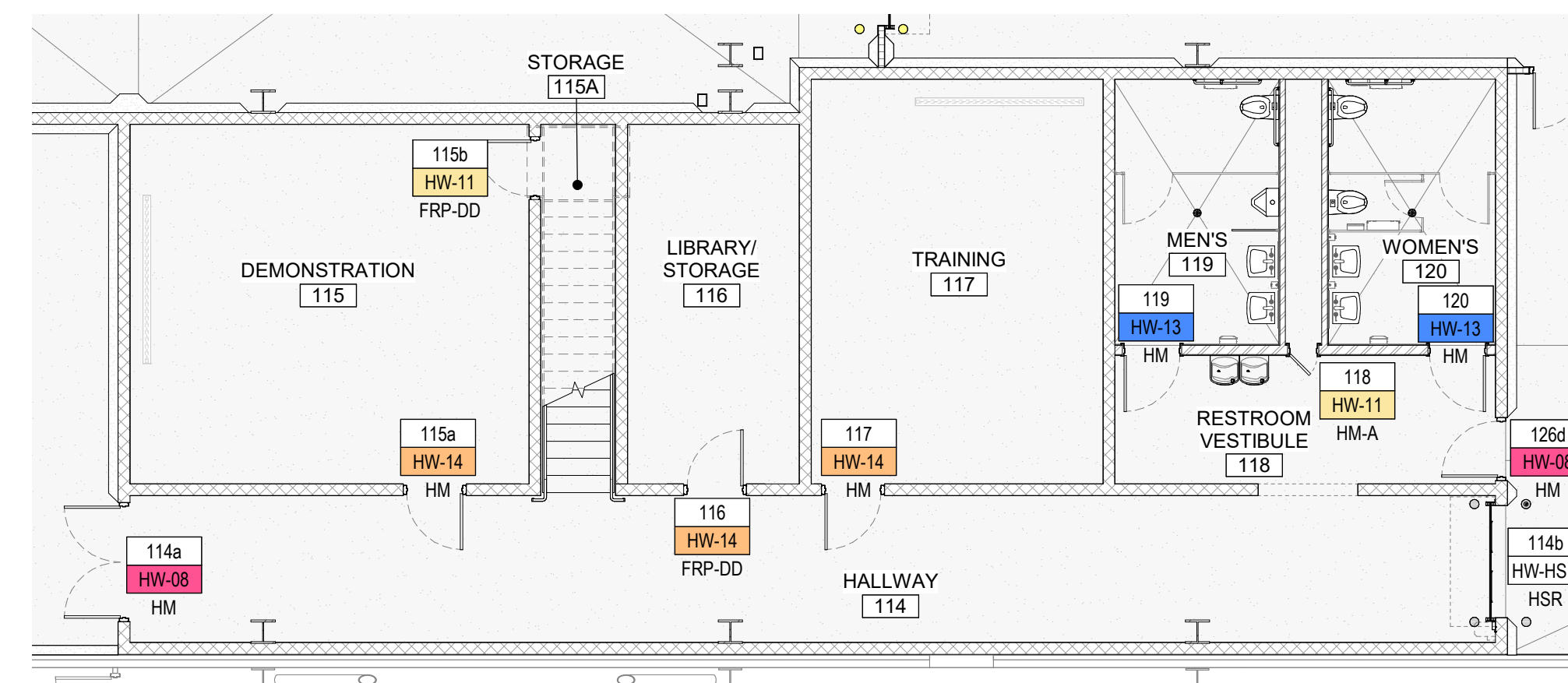
OVERALL DOOR FIRST FLOOR PLAN

SCALE: 1/32" = 1'-0"

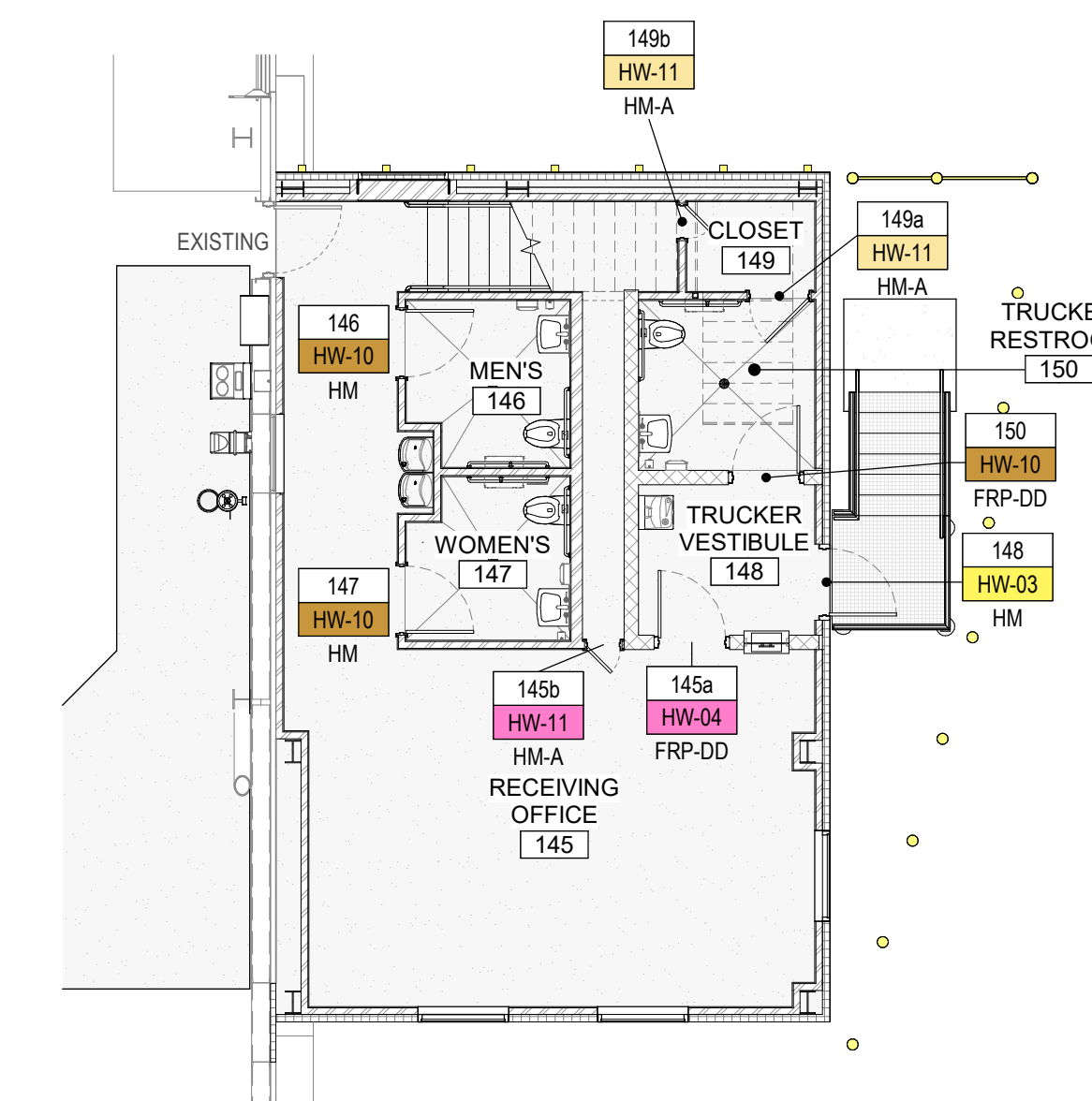
0' 8' 16' 32' 48' 64'



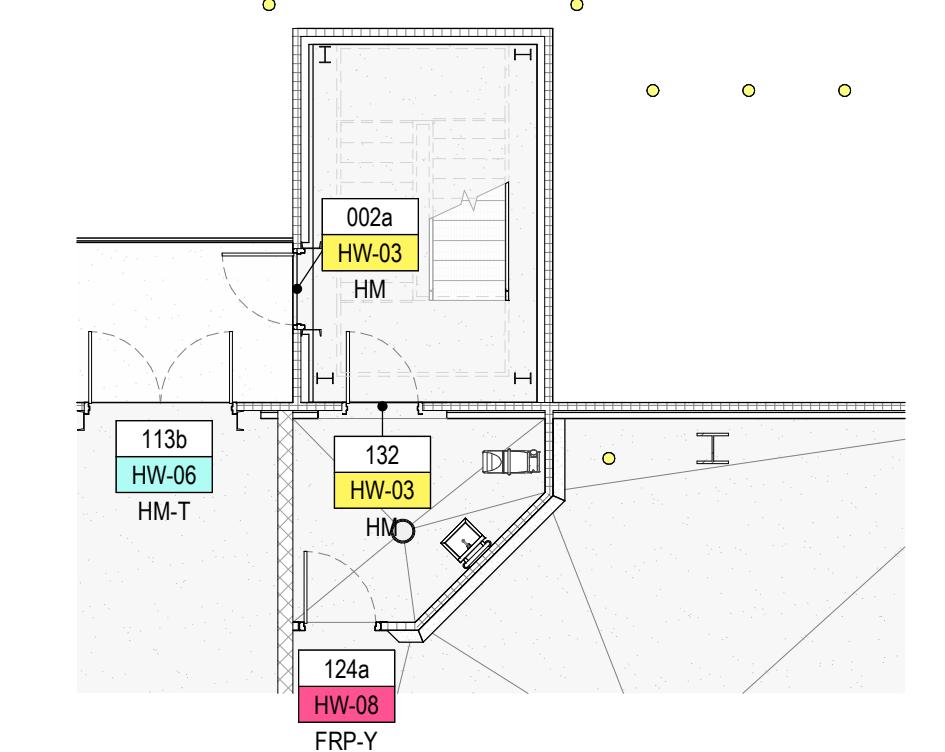
A SHIPPING OFFICE  
SCALE: 1/8" = 1'-0"



B L-11 OFFICE AREA - FIRST FLOOR  
SCALE: 1/8" = 1'-0"



C RECEIVING OFFICE - FIRST FLOOR  
SCALE: 1/8" = 1'-0"



D STAIR TO ROOF - FIRST FLOOR  
SCALE: 1/8" = 1'-0"

HARDWARE LEGEND

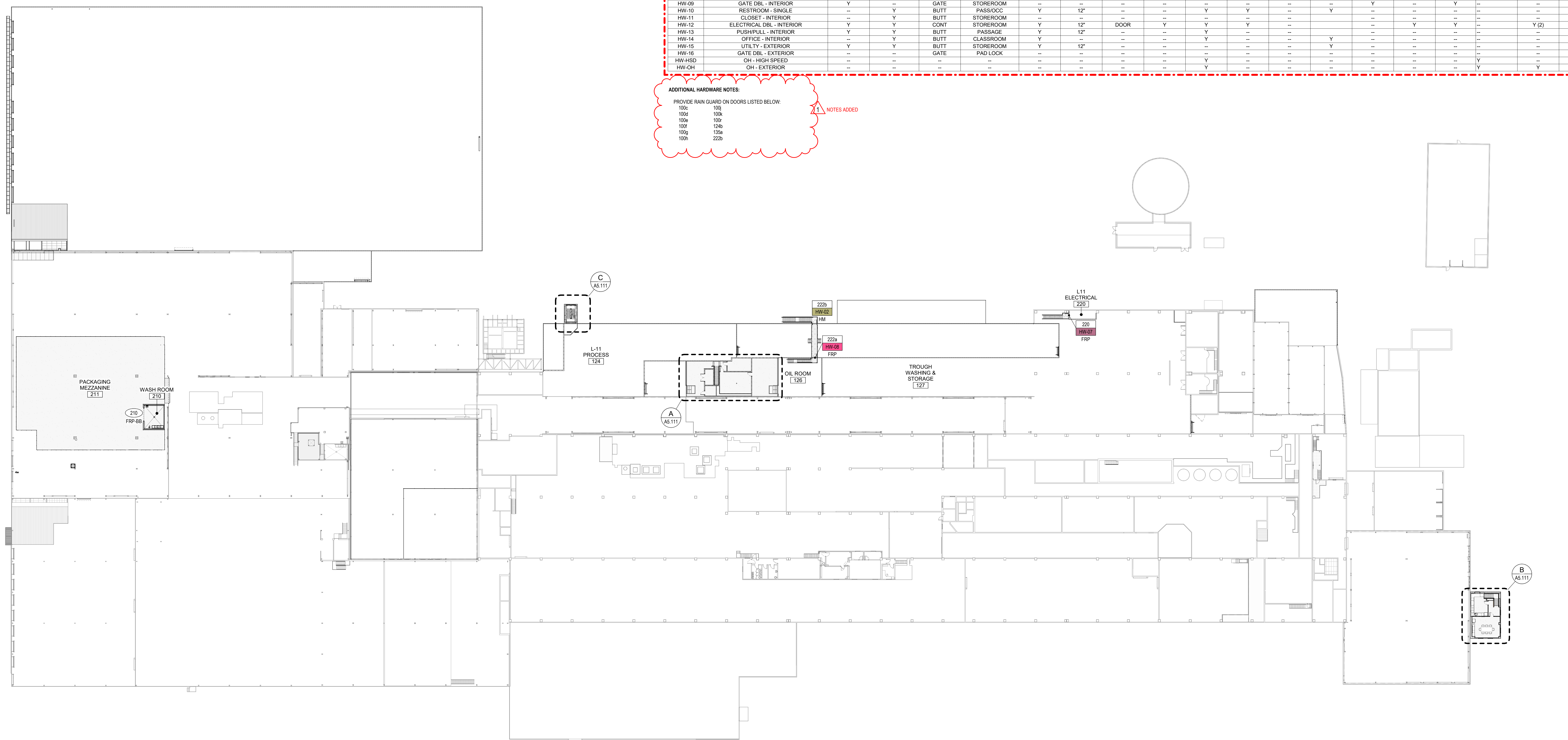
- HW-01 MANUFACTURER STD.
- HW-02 EXIT ONLY - EXTERIOR
- HW-03 ENTRANCE - EXTERIOR
- HW-04 ENTRANCE - INTERIOR
- HW-05 STORAGE - IT
- HW-06 ELECTRICAL DBL - EXTERIOR
- HW-07 ELECTRICAL - INTERIOR
- HW-08 PASSAGE EGRESS - INTERIOR
- HW-09 GATE DBL - INTERIOR
- HW-10 RESTROOM - SINGLE
- HW-11 CLOSET - INTERIOR
- HW-12 ELECTRICAL DBL - INTERIOR
- HW-13 OFFICE - INTERIOR
- HW-14 GATE DBL - EXTERIOR
- HW-15 UTILITY - EXTERIOR



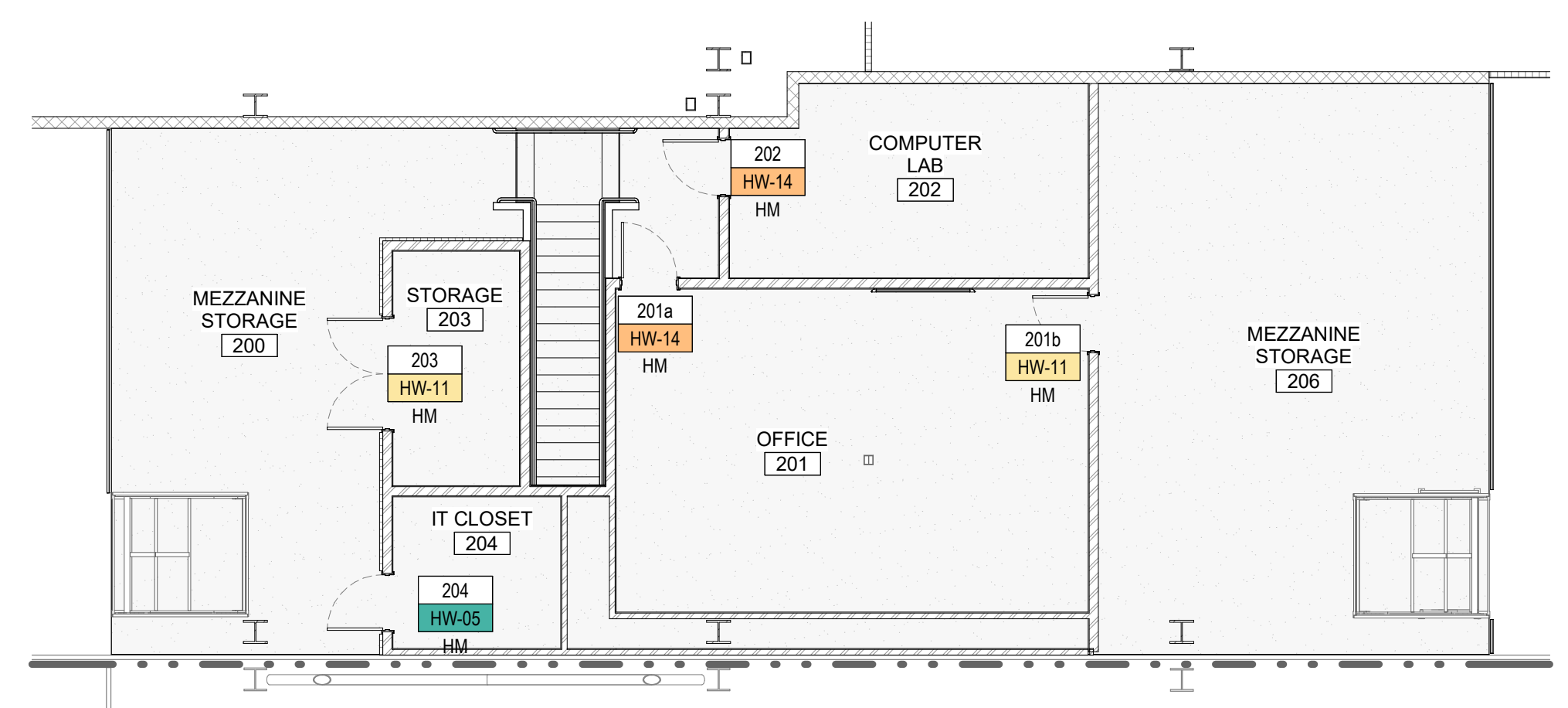
HW SET #	FUNCTION	EXIT DEVICE	ACCESSIBLE	HINGE TYPE	HARDWARE										ELECTRICAL					
					BOLT	CLOSER	KICK PLATE	ASTRAGAL	TRANSOM BAR	GASKETIN G	DOOR SWEEPS	THRESHOL D	STOP	ELECTRIC STRIKE (ES)	ELECTRIC LATCH (EL)	CARD READER (CR)	ELECTRIC OPERATED (EO)	POSITION SWITCH (DC)	ALARM ACTIVATE D (AA)	HEAT TRACE
HW-01	MANUFACTURER STANDARD				IMPACT DOOR															
HW-02	EXIT ONLY - EXTERIOR	AA	Y	BUTT																
HW-03	ENTRANCE - EXTERIOR	Y	Y	BUTT	STOREROOM	Y	12"													
HW-04	ENTRANCE - INTERIOR	Y	Y	BUTT	STOREROOM	Y	12"													
HW-05	STORAGE - IT		Y	BUTT	STOREROOM	Y	12"													
HW-06	ELECTRICAL DBL - EXTERIOR	Y	Y	CONT	STOREROOM	Y	12"	DOOR	Y	Y	Y	Y								
HW-07	ELECTRICAL - INTERIOR	Y	Y	CONT	STOREROOM	Y	12"													
HW-08	PASSAGE EGRESS - INTERIOR	Y	Y	BUTT	PASSAGE	Y	12"													
HW-09	GATE DBL - INTERIOR	Y		GATE	STOREROOM															
HW-10	RESTROOM - SINGLE		Y	BUTT	PASS/OCC	Y	12"													
HW-11	CLOSET - INTERIOR		Y	BUTT	STOREROOM															
HW-12	ELECTRICAL DBL - INTERIOR	Y	Y	CONT	STOREROOM	Y	12"	DOOR	Y	Y	Y	Y								
HW-13	PUSH/PULL - INTERIOR	Y	Y	BUTT	PASSAGE	Y	12"													
HW-14	OFFICE - INTERIOR		Y	BUTT	CLASSROOM	Y														
HW-15	UTILITY - EXTERIOR	Y	Y	BUTT	STOREROOM	Y	12"													
HW-16	GATE DBL - EXTERIOR			GATE	PAD LOCK															
HW-HSD	OH - HIGH SPEED																			
HW-OH	OH - EXTERIOR																			

ADDITIONAL HARDWARE NOTES:  
 PROVIDE RAIN GUARD ON DOORS LISTED BELOW:  
 100c 100  
 100a 100a  
 100b 100  
 100f 124b  
 100g 135a  
 100h 222b

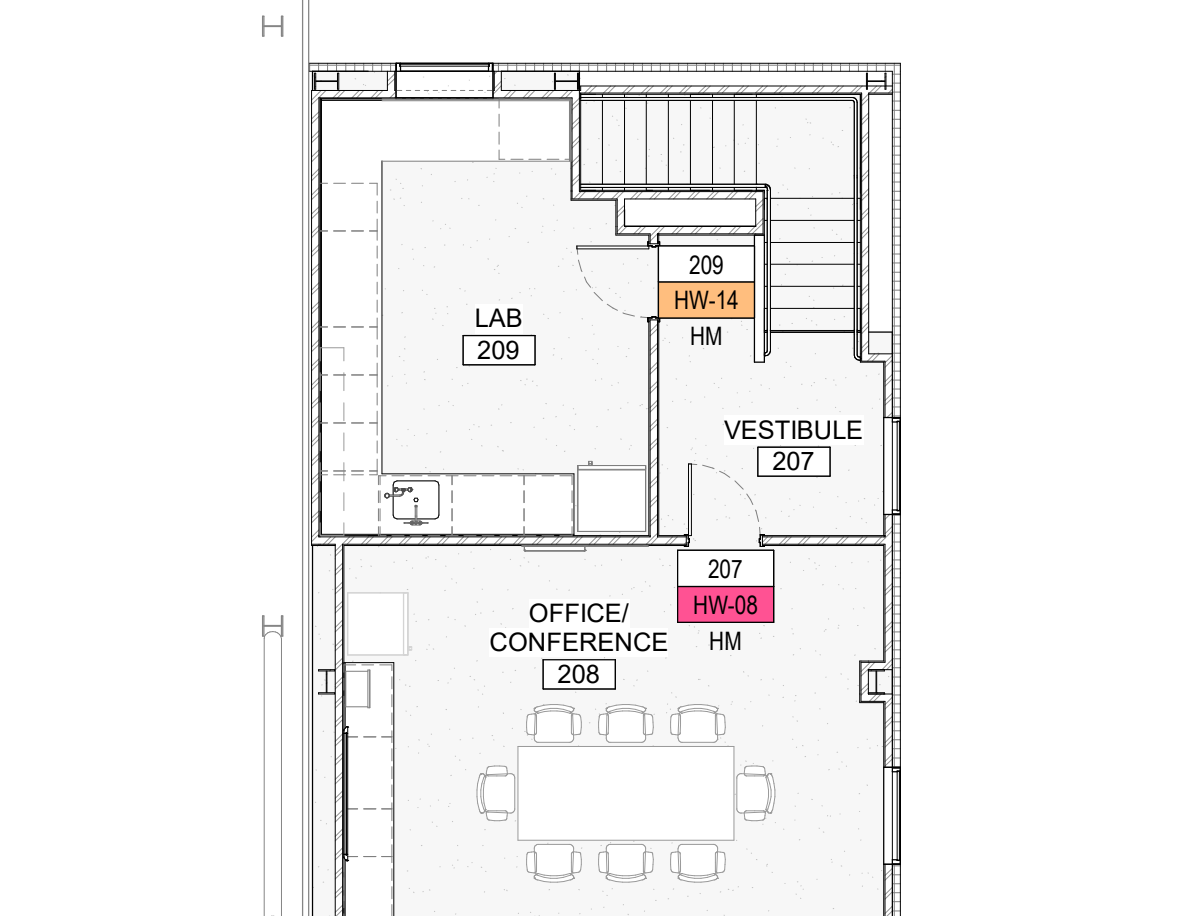
NOTES ADDED



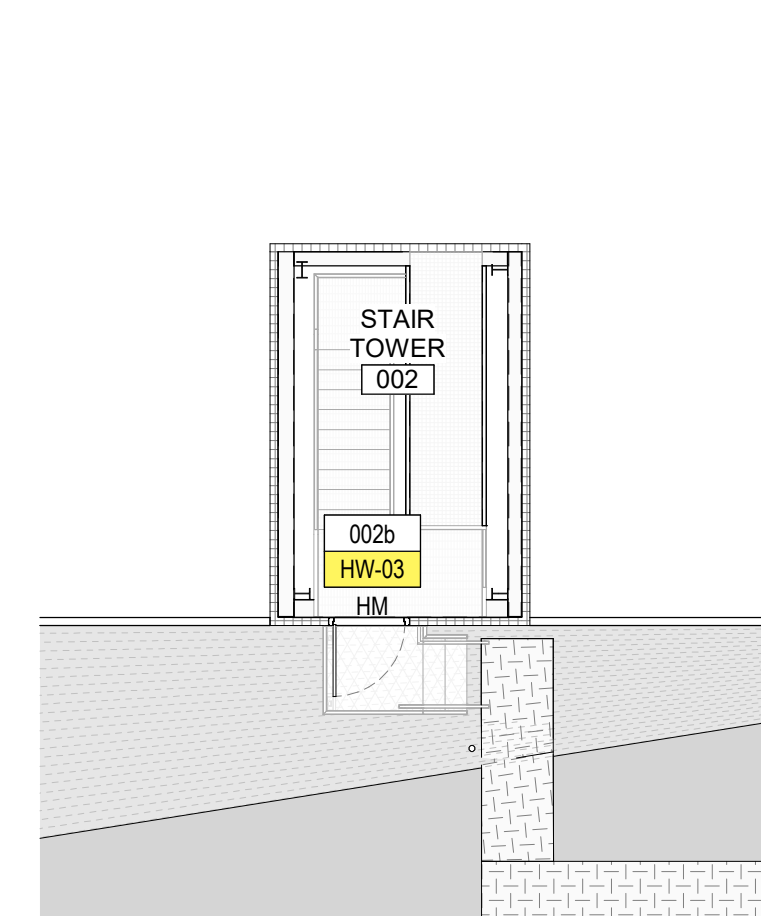
OVERALL DOOR SECOND FLOOR PLAN  
 SCALE: 1/32" = 1'-0"  
 0' 4' 8' 16' 32' 48' 64'  
 1/32" = 1'-0"  
 TRUE NORTH PLAN NORTH



A L-11 OFFICE AREA - SECOND FLOOR  
 SCALE: 1/8" = 1'-0"



B RECEIVING OFFICE - SECOND FLOOR  
 SCALE: 1/8" = 1'-0"



C STAIR TO ROOF - ROOF LEVEL  
 SCALE: 1/8" = 1'-0"

**HARDWARE LEGEND**

HW-01 MANUFACTURER STD.	HW-03 ENTRANCE - EXTERIOR	HW-05 STORAGE - IT	HW-07 ELECTRICAL - INTERIOR	HW-09 GATE DBL - INTERIOR	HW-11 CLOSET - INTERIOR	HW-13 PUSH/PULL - INTERIOR	HW-15 UTILITY - EXTERIOR
HW-02 EXIT ONLY - EXTERIOR	HW-04 ENTRANCE - INTERIOR	HW-06 ELECTRICAL DBL - EXTERIOR	HW-08 PASSAGE EGRESS - INTERIOR	HW-10 RESTROOM - SINGLE	HW-12 ELECTRICAL DBL - INTERIOR	HW-14 OFFICE - INTERIOR	HW-16 GATE DBL - EXTERIOR

### WINDOW SCHEDULE

WINDOW TYPE	MARK	ROOM NAME	DRAWING REFERENCE	CONTRACTED BY	WALL MATERIAL	ELEVATION	SIZE (W x H)	ROUGH OPENING (W x H)	WINDOW / OPENING				DETAILS			REMARKS	MARK
									GLAZING MATERIAL	THERMAL BREAK	FRAME MATERIAL	FRAME PAINT COLOR	SILL MATERIAL	SILL FINISH	HEAD		
FIRST FLOOR																	
W1	106	SHIPPING OFFICE	A2.001	TSS	CMU	W1	2'-0" x 4'-0"	2'-0 3/8" x 4'-0 3/8"	POLY				HM			BULLET PROOF TRANSACTION WINDOW WITH SS TRANSACTION TRAY AND COUNTERTOP.	106
W1	145	RECEIVING OFFICE	A2.000	TSS	CMU	W1	2'-0" x 4'-0"	2'-0 3/8" x 4'-0 3/8"	POLY				HM			BULLET PROOF TRANSACTION WINDOW WITH SS TRANSACTION TRAY AND COUNTERTOP.	145
W1: 2																	
W2	109	BREAK ROOM	A2.001		CMU	W2	4'-0" x 3'-4"	4'-0 1/2" x 3'-4 1/4"	POLY				HM				109
W2	103	OFFICE	A2.001		CMU	W2	4'-0" x 3'-4"	4'-0 1/2" x 3'-4 1/4"	POLY				HM				103
W2	104	OFFICE	A2.001		CMU	W2	4'-0" x 3'-4"	4'-0 1/2" x 3'-4 1/4"	POLY				HM				104
W2: 3																	
W3	105	HALL	A2.001		IMP/STUD	W3	3'-6" x 3'-0"	3'-6 1/2" x 3'-0 1/4"	GLASS	Yes			ALUM				105
W3	123	SHIPPING OFFICE	A2.001		IMP/STUD	W3	3'-6" x 3'-0"	3'-6 1/2" x 3'-0 1/4"	GLASS	Yes			ALUM				123
W3: 2																	
W4	145a	RECEIVING OFFICE	A2.000		IMP/STUD	W4	4'-0" x 3'-6"	4'-0 1/2" x 3'-6 1/4"	GLASS	Yes			ALUM				145a
W4	145c	RECEIVING OFFICE	A2.000		IMP/STUD	W4	4'-0" x 3'-6"	4'-0 1/2" x 3'-6 1/4"	GLASS	Yes			ALUM				145c
W4	145b	RECEIVING OFFICE	A2.000		IMP/STUD	W4	4'-0" x 3'-6"	4'-0 1/2" x 3'-6 1/4"	GLASS	Yes			ALUM				145b
W4: 3																	
W5	145d	RECEIVING OFFICE	A2.000		IMP/STUD	W5	4'-0" x 3'-0"	4'-0 1/2" x 3'-0 1/4"	GLASS	Yes			ALUM				145d
W5: 1																	
SECOND FLOOR																	
W4	209	LAB	A2.000		IMP/STUD	W4	4'-0" x 3'-6"	4'-0 1/2" x 3'-6 1/4"	GLASS	Yes			ALUM				209
W4	208c	OFFICE/ CONFERENCE	A2.000		IMP/STUD	W4	4'-0" x 3'-6"	4'-0 1/2" x 3'-6 1/4"	GLASS	Yes			ALUM				208c
W4	208b	OFFICE/ CONFERENCE	A2.000		IMP/STUD	W4	4'-0" x 3'-6"	4'-0 1/2" x 3'-6 1/4"	GLASS	Yes			ALUM				208b
W4	208a	OFFICE/ CONFERENCE	A2.000		IMP/STUD	W4	4'-0" x 3'-6"	4'-0 1/2" x 3'-6 1/4"	GLASS	Yes			ALUM				208a
W4	207	VESTIBULE	A2.000		IMP/STUD	W4	4'-0" x 3'-0"	4'-0 1/2" x 3'-0 1/4"	GLASS	Yes			ALUM				207
W4: 5																	
GRAND TOTAL: 16																	

### WINDOW TYPE ELEVATIONS

