

**REQUIREMENTS FOR POE**  
 -120-240 VAC 15 AMP MAX EMERGENCY POWER  
 -1 ET CONNECTION BETWEEN THE POEs

**POE CONNECTIONS**  
 For connections between POE switches greater than the requirements for Cat5e, the switches accept SFP fiber transceivers (also known as mini-Gbic). See the NNC Install Manual for further information.

**REQUIREMENTS FOR THE UPC**

**REQUIREMENTS FOR THE SERVERS**  
 -115 VAC 15 AMP MAX EMERGENCY POWER  
 -MAX 1 CABLE TIE/AMP MAX EMERGENCY POWER  
 -1 CAT5 WIRES BETWEEN POE AND THE SERVER

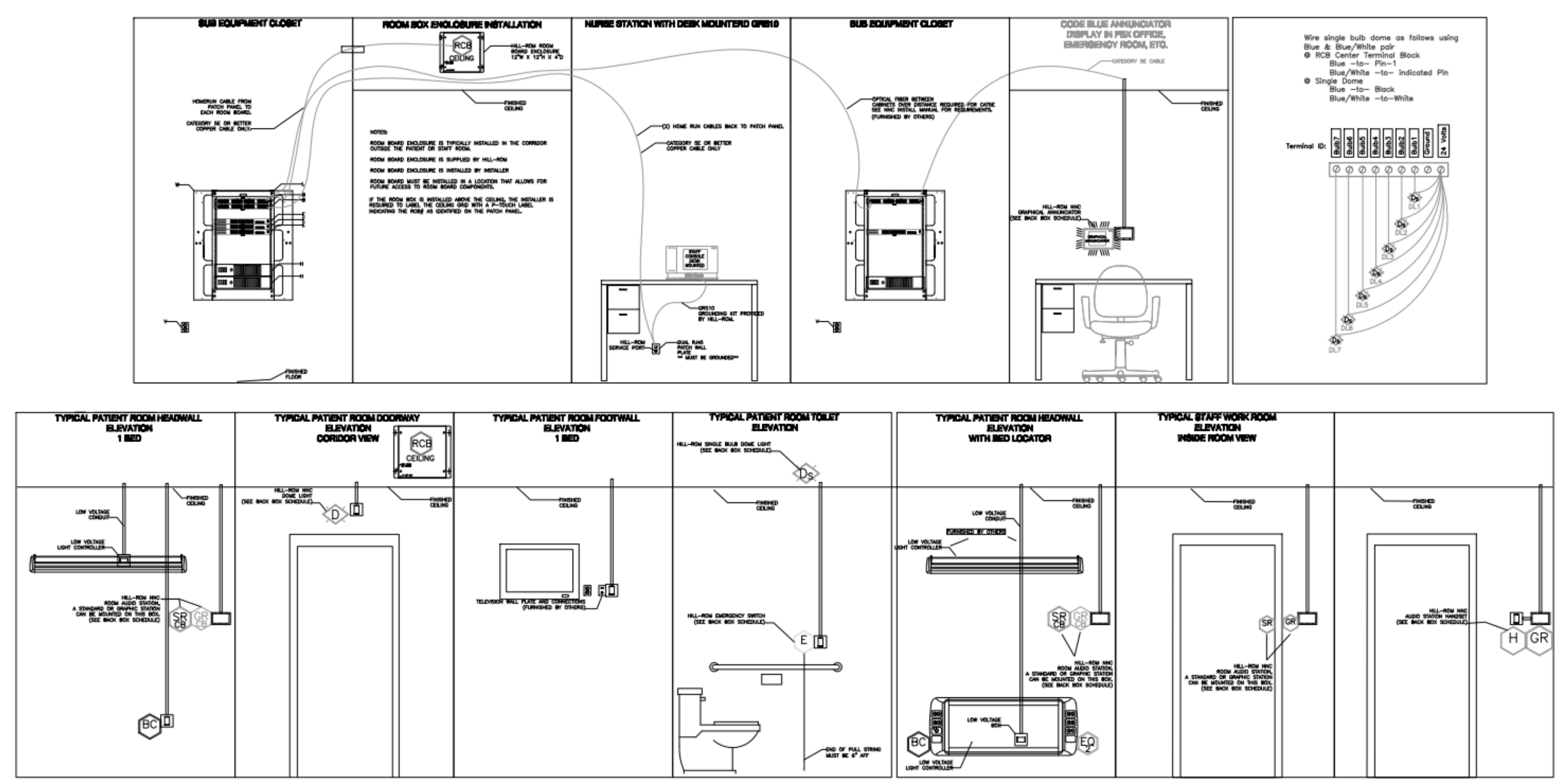
**COMMUNICATION NOTES:**

- All cabling must be plenum rated category 5e or better, 24AWG, 4 twisted pair communication cable. Belden 1686A or equivalent is required. Preferred jacket color for nurse call cabling is Seafoam Green.
- All cabling to be field terminated by installing contractor. Location of rough-in for all ASBC must avoid interference or damage from the patient bed.
- All device locations shown are for illustration purposes only, actual locations to be field determined.
- Hill-Rom requires AMP High Performance (Category 5e or better) RJ45 connectors for all nurse call wiring. Cable must be terminated with approved AMP termination tool and compatible die-set for the RJ45 connector selected. Since Cat5e and Cat6 die are not cross-compatible, it is critical that the correct die be used for the chosen connector. Refer to the TE Connectivity website at www.te.com for current part numbers and compatibility lists.
- All termination tools are to be supplied by installing contractor.
- All glass walls, glass doors, and interior windows must be indicated.
- Any special requirements/interfaces not explicitly defined in proposal are not included.
- Unless otherwise noted, all non-standard products are not UL approved.

### HILL-ROM NURSE CALL SYMBOL LIST

SYMBOL	MANUF.	PART #	DESCRIPTION	BACKBOX	BOX MOUNTING HEIGHT
NCM	HILL-ROM	P2500NNC1B00	STAFF CONSOLE, DESK MOUNT	STEEL CITY 58371 3/4R, RACO 561, OR ANY OTHER SINGLE GANG BACK BOX.	REFER TO ELEVATION DRAWINGS
NCM <sub>W</sub>	HILL-ROM	P2594NNC3A00	STAFF CONSOLE, WALL MOUNT	STEEL CITY 58371 3/4R, RACO 561, OR ANY OTHER SINGLE GANG BACK BOX.	REFER TO ELEVATION DRAWINGS
GA	HILL-ROM	P2594NNC3B00	GRAPHICAL ANNUNCIATOR	STEEL CITY 58371 3/4R, RACO 561, OR ANY OTHER SINGLE GANG BACK BOX.	REFER TO ELEVATION DRAWINGS
BC	HILL-ROM	P2505NNC1B00	AUDIO STATION BED CONNECTOR (ASBC)	GARVIN 52181-3/4, WITH GARVIN 52C13 RING, OR ANY OTHER 4" SQUARE 3.5" DEEP BACK BOX WITH SINGLE GANG MUD RING.	REFER TO ELEVATION DRAWINGS
EQ	HILL-ROM	P2516A01	EQUIPMENT RECEPTACLE	STEEL CITY 58371 3/4R, RACO 561, OR ANY OTHER SINGLE GANG BACK BOX.	REFER TO ELEVATION DRAWINGS
DL	HILL-ROM	P2506NNC1B00	DOME LIGHT, SINGLE LED	RACO 231, WITH RACO 778 RING, OR ANY OTHER 4" SQUARE 2 1/8" DEEP BACK BOX.	REFER TO ELEVATION DRAWINGS
DL <sub>2</sub>	HILL-ROM	P2506NNC8A00-D	ICON BASED-LIGHT LED DOME LIGHT	STEEL CITY CYLE-3/4, RACO 591, OR ANY OTHER 3.5" DEEP SINGLE GANG BACK BOX.	REFER TO ELEVATION DRAWINGS
DL <sub>3</sub>	HILL-ROM	P2506NNC8A00-7	ICON BASED-LIGHT LED ZONE LIGHT	STEEL CITY CYLE-3/4, RACO 591, OR ANY OTHER 3.5" DEEP SINGLE GANG BACK BOX.	REFER TO ELEVATION DRAWINGS
POE-24	HILL-ROM	P2519NNC1A24	POE SWITCH		REFER TO ELEVATION DRAWINGS
CB	HILL-ROM	P2520NNC2B06	PULL SWITCH, CB, W/CANCEL	RACO 561 BACK BOX, OR ANY OTHER 2.5" DEEP SINGLE GANG BACK BOX.	REFER TO ELEVATION DRAWINGS
EB	HILL-ROM	P2520A08	STAFF EMERGENCY PUSH BUTTON SWITCH	RACO 561 BACK BOX, OR ANY OTHER 2.5" DEEP SINGLE GANG BACK BOX.	REFER TO ELEVATION DRAWINGS
ES	HILL-ROM	P2520B01	BATH SWITCH, W/CANCEL, SUPERVISED	RACO 561 BACK BOX, OR ANY OTHER 2.5" DEEP SINGLE GANG BACK BOX.	REFER TO ELEVATION DRAWINGS
ES <sub>2</sub>	HILL-ROM	P2520B02	BATH SWITCH, W/O CANCEL, SUPERVISED	RACO 561 BACK BOX, OR ANY OTHER 2.5" DEEP SINGLE GANG BACK BOX.	REFER TO ELEVATION DRAWINGS
UPS APC Rackmount Non-Setemic	HILL-ROM	P2521B02	UPS, RACK MOUNTABLE, 2U - NON-SEISMIC		REFER TO ELEVATION DRAWINGS
SR	HILL-ROM	P2594NNC1B01	STAFF STATION - STANDARD ROOM STATION W/O CODE	STEEL CITY GW-225G, RACO 691 OR ANY OTHER 2.5" DEEP, TWO OR THREE GANG BACK BOX.	REFER TO ELEVATION DRAWINGS
GR	HILL-ROM	P2594NNC2C00	GRAPHICAL ROOM STATION (GRS) - STAFF	STEEL CITY GW-225G, RACO 691 OR ANY OTHER 2.5" DEEP, TWO OR THREE GANG BACK BOX.	REFER TO ELEVATION DRAWINGS
GR <sub>P</sub>	HILL-ROM	P2594NNC2C11	GRAPHICAL ROOM STATION (GRS) - PATIENT	STEEL CITY GW-225G, RACO 691 OR ANY OTHER 2.5" DEEP, TWO OR THREE GANG BACK BOX.	REFER TO ELEVATION DRAWINGS
RA	HILL-ROM	P2594NNC4A10	REMOTE AUDIO DEVICE	STEEL CITY GW-225G, RACO 691 OR ANY OTHER 2.5" DEEP, TWO OR THREE GANG BACK BOX.	REFER TO ELEVATION DRAWINGS
RCB1	HILL-ROM	P2599NNC2A00	RCB2 ROOM CONTROL BOARD	STEEL CITY GW-235G, RACO 696 OR ANY OTHER 3.5" DEEP, TWO OR THREE GANG BACK BOX.	REFER TO ELEVATION DRAWINGS
RCB2	HILL-ROM	P2599NNC3B00	RCB3 ROOM CONTROL BOARD	STEEL CITY GW-235G, RACO 696 OR ANY OTHER 3.5" DEEP, TWO OR THREE GANG BACK BOX.	REFER TO ELEVATION DRAWINGS
RTLS-CLOSED	HILL-ROM	RTLS-CLOSED	RTLS - STAFF LOCATING LOCATION-CLOSED AREA	STEEL CITY GW-225G, RACO 691 OR ANY OTHER TWO GANG BACK BOX.	REFER TO ELEVATION DRAWINGS
RTLS-OPEN	HILL-ROM	RTLS-OPEN	RTLS - STAFF LOCATING LOCATION-GLASS/OPEN AREA	STEEL CITY GW-225G, RACO 691 OR ANY OTHER TWO GANG BACK BOX.	REFER TO ELEVATION DRAWINGS
RTLS-BAY	HILL-ROM	RTLS-BAY	RTLS - STAFF LOCATING LOCATION-BAY	STEEL CITY GW-225G, RACO 691 OR ANY OTHER TWO GANG BACK BOX.	REFER TO ELEVATION DRAWINGS
R	CURBELL	MAP985A	REMOTE ENTERTAINMENT STATION	STEEL CITY GW-225C, RACO 691 OR ANY OTHER TWO GANG BACK BOX.	REFER TO ELEVATION DRAWINGS

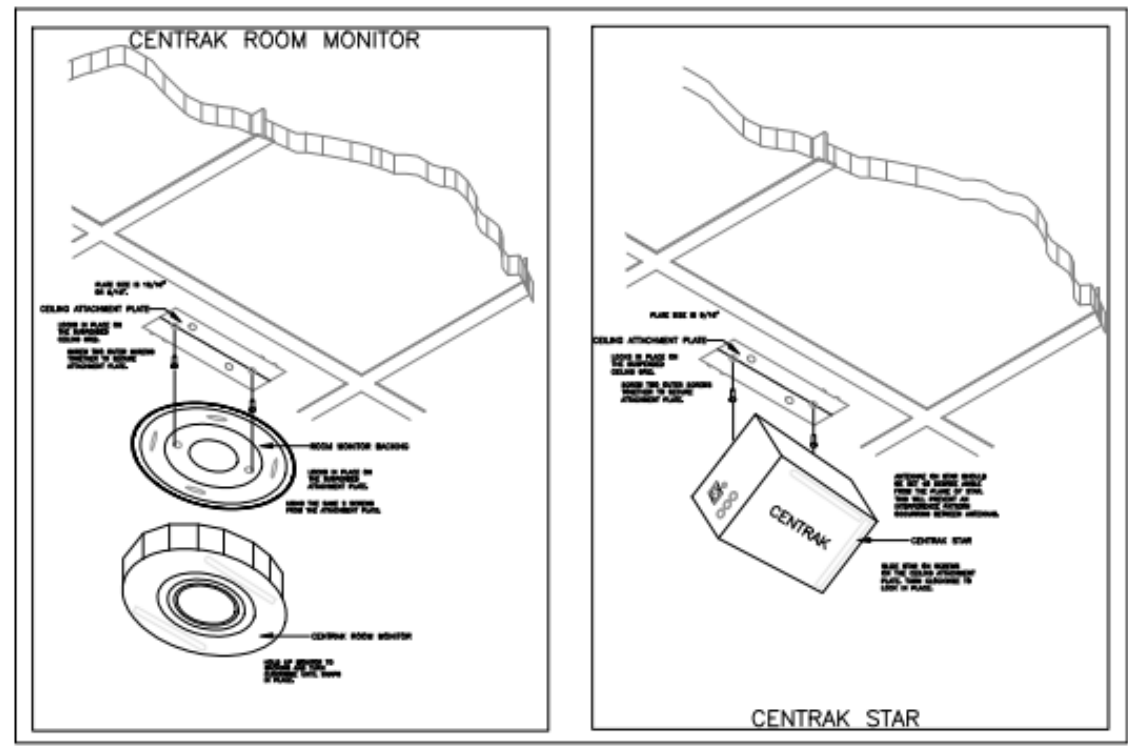
TYPICAL PLACEMENT & WIRING ELEVATION DIAGRAMS



### Navicare Nurse Call RTLS

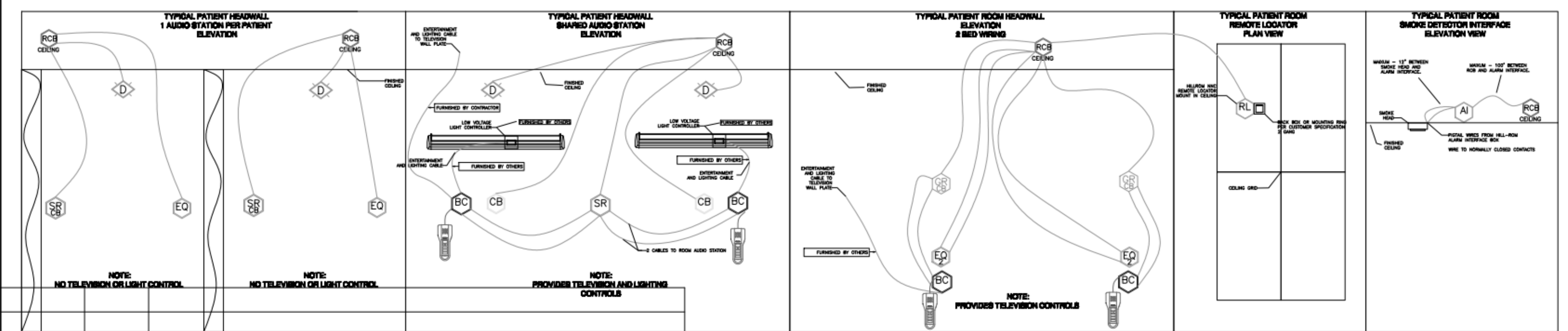
DEVICE SYMBOL	CENTRAK NAME	PART #	BRACKETS	WORKING LOCATION	POWER	WORKING FUNCTION
CS	Centrak Star	CBN-7K-606		Ceiling	POE.	Used to interface the tags and monitors to the IT network.
ST	Star-Timing	CBN-7K-628		Equipment Closet	to ethernet. One needed per sub net.	Keeps everyone from talking at once.
CM	Centrak Room Monitor	CBN-7K-616	ITA-361 9/16" ITA-362 15/16" ITA-363 5/16"	Ceiling / Wall	Battery Powered	Required to gain visibility to tags and keep a very accurate local location accuracy using IR signaling.
VM	Virtual Wall Monitor (Single)	CBN-7K-626	ITA-371 9/16" ITA-372 15/16"	Ceiling / Wall	Battery Powered	Locating tagged assets or people that are geared to semi-private rooms and bays typically found in ED or OR units. The area of coverage is not effected by physical walls.
MD	Monitor Drop Box	CBN-7K-608		Wall	Battery Powered	
HM	Hygiene Monitor (Din)	CBN-7K-675		Mounts to soap dispenser, pump, and/or sink.	Battery Powered	Automatically tracks hand hygiene, 24/7 at the caregivers level. Collects data on all events at hand washing stations.
IR	IR Regenerator	CBN-7K-609		Ceiling / Wall		If used in Virtual Wall locations are installed, a IR Regenerator needs to be located after the 4th VV Monitor in the bay.

ENHANCED LOCATING - CENTRAK



**NOTE - ALL METAL BOXES MUST BE GROUNDED, IF THE CONDUIT SYSTEM IS NOT GROUNDED, THE BOXES MUST BE GROUNDED BACK TO THE BUILDING STEEL. MASONRY BOXES ARE NOT REQUIRED, ALL BOXES ARE REQUIRED TO BE METAL.**

THIS PLAN IS FOR REFERENCE ONLY. THIS IS DESIGNED TO SHOW DIAGRAMS THAT MAY HELP IN THE CONSTRUCTION PROCESS.



Revision Date	Revised by	Comments

Revision History

**NOTICE**  
 The drawings and all information herein is property of HILL-ROM CORPORATION, and shall remain confidential. This drawing and information herein, is confidential and shall not be disclosed, copied, or reproduced without the written consent of Hill-Rom Corporation, Inc.  
 The drawing and all information herein shall remain the property of Hill-Rom Corporation, Inc.

**HILL-ROM IT SOLUTIONS**  
 1225 CRESCENT GREEN  
 SUITE 200  
 CARY, NC 27516  
 www.hill-rom.com



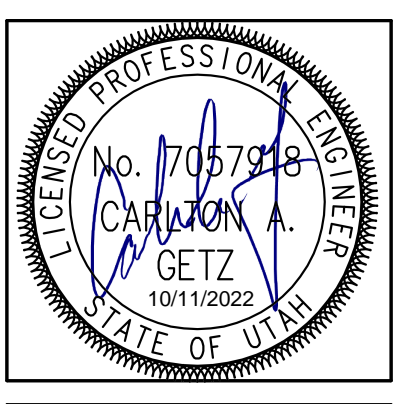
Customer Information  
**HILL-ROM IT SOLUTIONS**  
 1225 CRESCENT GREE, STE 300  
 CART NC 27518

Project Information  
**NNC - Centrak-Details/Backbox**  
 Rev 1  
 1/24/2014

Drawing Information  
**Lab01040 Rev1.dwg**  
 Sheet Number Total Sheets  
 Drawing Scale

U.L. LISTED

DATE	REVISION



AUXILIARY RISER DIAGRAMS

EY601

GENERAL SHEET NOTES

○ SHEET KEYNOTES

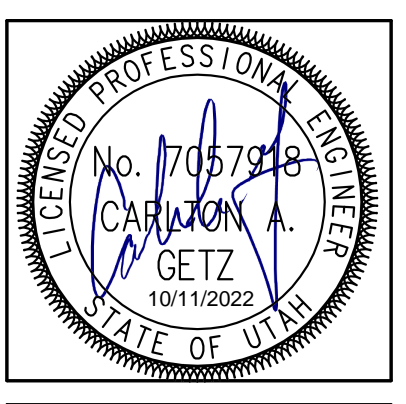
**JRCA ARCHITECTS**  
 ■ ■ ■ A Galloway Co.  
 577 South 200 East  
 SLC, Utah 84111  
 O: (801) 533-2100  
 GallowayUS.com  
 jrcaesign.com

**SPECTRUM ENGINEERS**  
 324 S. State St., Suite 400  
 Salt Lake City, UT 84111  
 800-678-7077  
 801-328-5151  
 Fax: 801-328-5155  
 www.spectrum-engineers.com

Intermountain Healthcare  
 Primary Children's Hospital - Ultrasound  
 100 NORTH MARIO CAPECCHI DRIVE  
 SALT LAKE CITY, UTAH 84113

PROJECT #: IHC000014.30

100% CD SET	
DATE	REVISION
08/09/2022	



MAIN LEVEL  
 FIRE ALARM  
 PLAN

FA101

BIM 360//IHC\_014\_30 - Primary Childrens Ultrasound/210634-Elec Central.rvt

10/10/2022 2:20:25 PM



**A6 MAIN LEVEL FIRE ALARM PLAN**  
 SCALE: 1/4" = 1'-0"