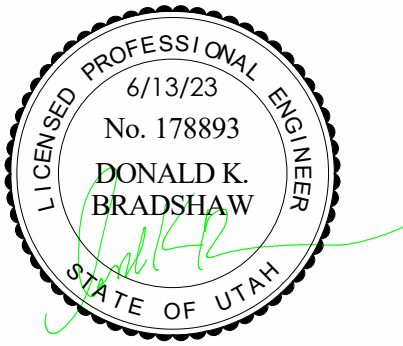


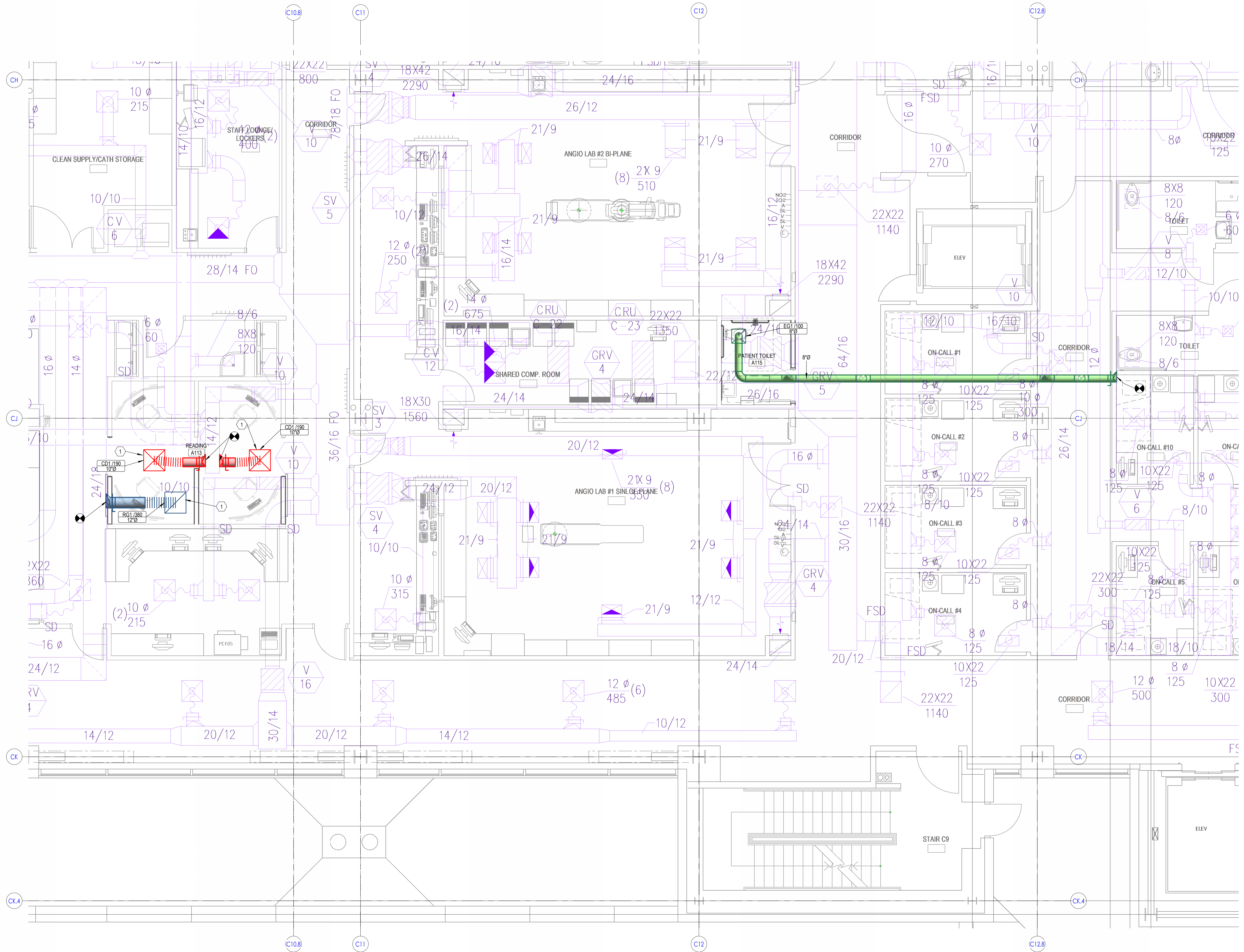
KEYNOTES  
1 INSTALL NEW DIFFUSER/GRILLE IN NEW CEILING GRID. BALANCE TO CFM SHOWN.



NJRA Architects, Inc.  
5272 S. College Drive, Suite 104  
Murray, Utah 84123  
801.364.9259  
www.njraarchitects.com



181 East 5600 South  
Murray, Utah 84107  
O: (801) 550-3148  
www.vbfa.com  
VBFA Project #: 23038



1 LEVEL 2 HVAC PLAN  
SCALE: 1/4" = 1'-0"

KEY PLAN

Intermountain Health  
Intermountain Medical Center  
Angio Lab #3 Remodel Project

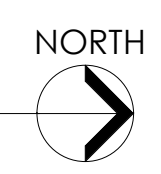
5121 South Cottonwood Street  
Murray, UT 84107

NJRA Project # 22247.00  
Construction Documents June 13, 2023

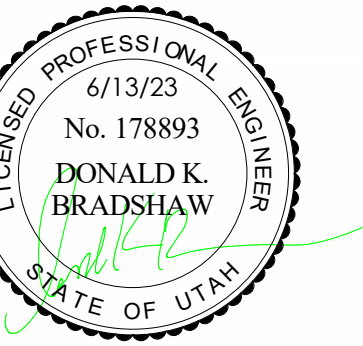
LEVEL 1 HVAC  
PLAN - AREA B

M101B

6/13/2023 4:01:50 PM

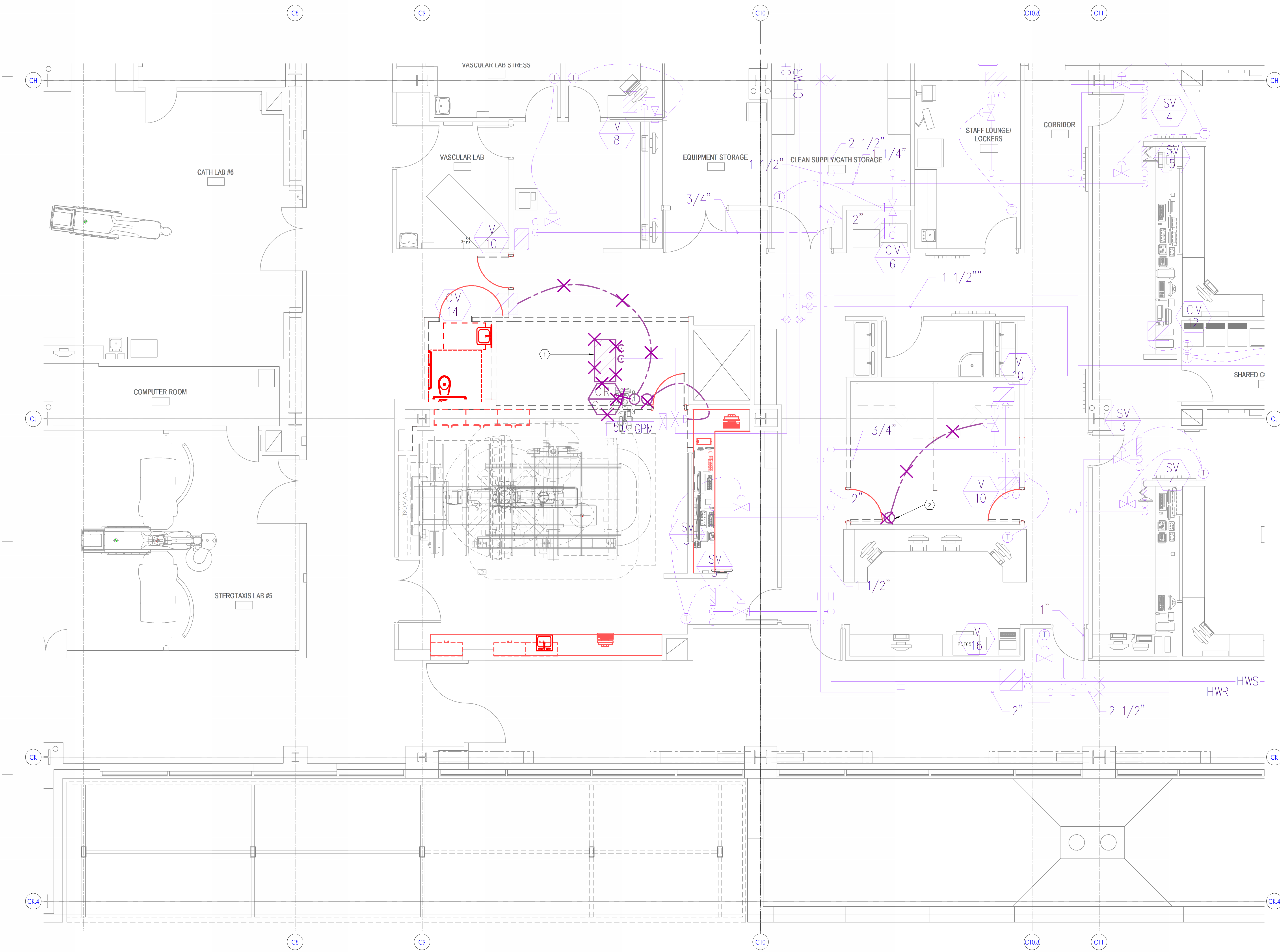






**KEYNOTES**

- 1 REMOVE FAN COIL UNIT FROM EXISTING LOCATION, KEEP FOR REINSTALLATION, AS SHOWN ON SHEET M111A.
- 2 DEMOLISH EXISTING THERMOSTAT.



**KEY PLAN**

Intermountain Health  
Intermountain Medical Center  
Angio Lab #3 Remodel Project

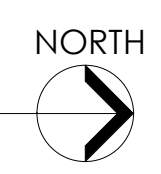
5121 South Cottonwood Street  
Murray, UT 84107

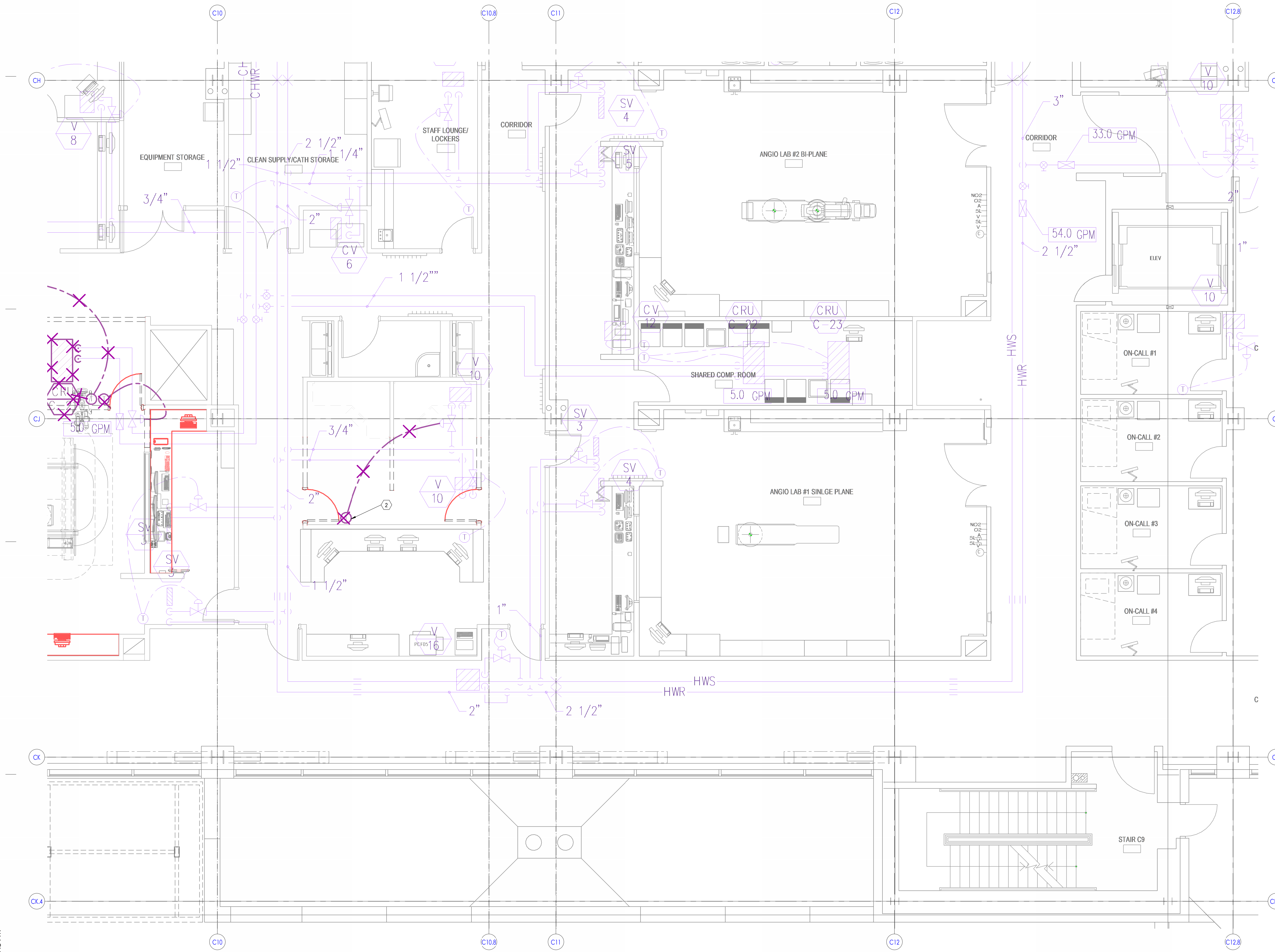
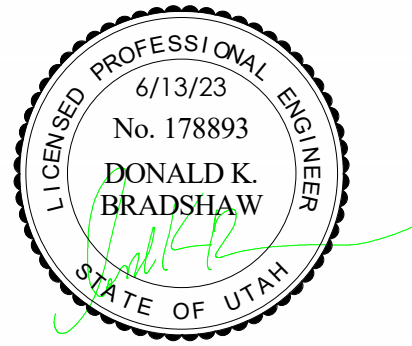
NJRA Project # 22247.00  
Construction Documents June 13, 2023

LEVEL 1  
MECHANICAL  
PIPING  
DEMOLITION  
PLAN - AREA A  
**MD111A**

6/13/2023 4:02:19 PM

1 LEVEL 2 MECHANICAL PIPING DEMOLITION PLAN  
MD111A 1/4" = 1'-0"





KEY PLAN

Intermountain Health  
Intermountain Medical Center  
Angio Lab #3 Remodel Project

5121 South Cottonwood Street  
Murray, UT 84107

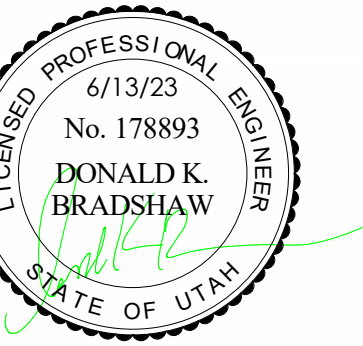
NJRA Project # 22247.00  
Construction Documents June 13, 2023

LEVEL 1  
MECHANICAL  
PIPING  
DEMOLITION  
PLAN - AREA B  
MD111B

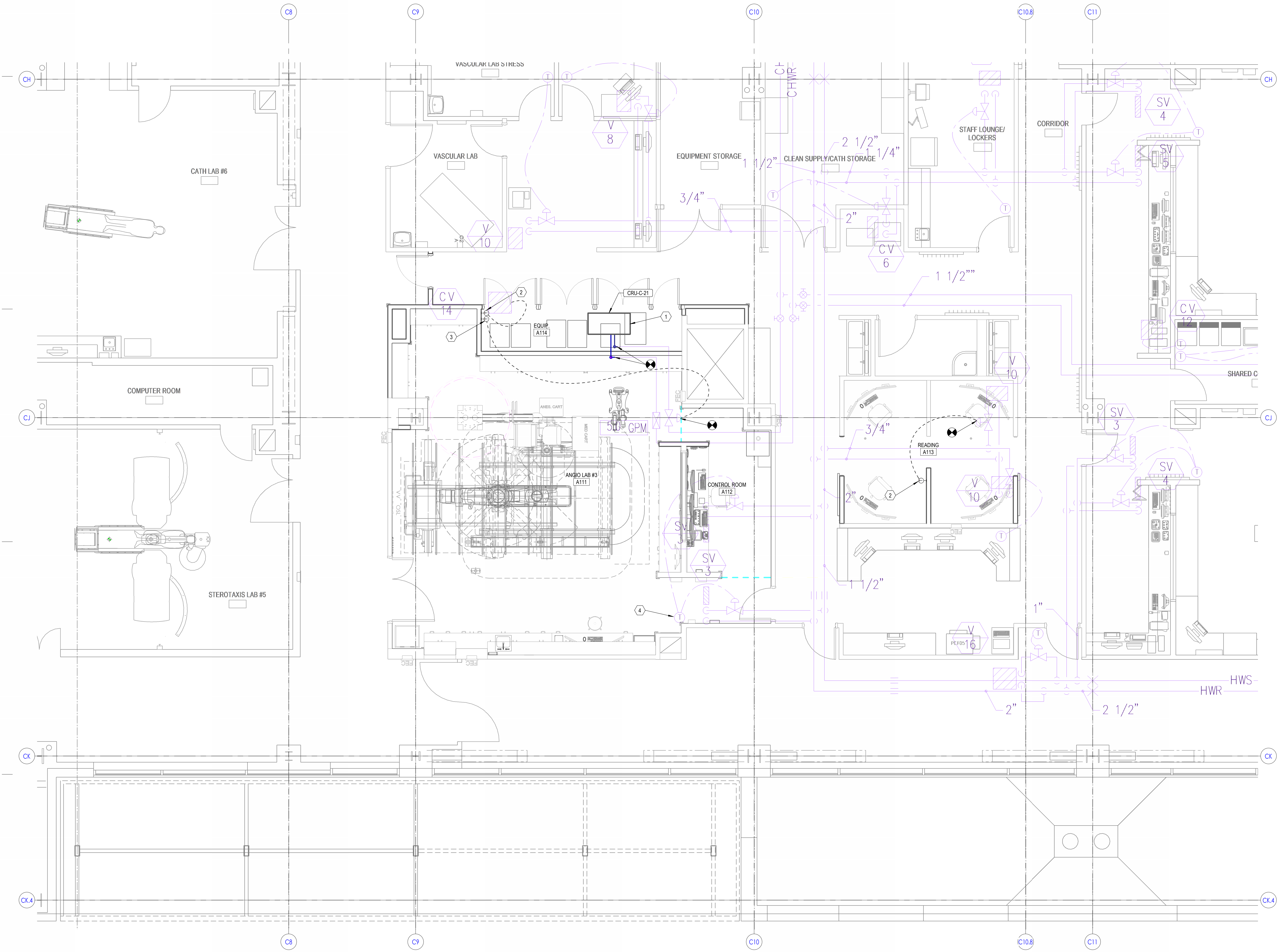
6/13/2023 4:02:48 PM

1 LEVEL 2 MECHANICAL PIPING DEMOLITION PLAN  
MD111B 1/4" = 1'-0"





- KEYNOTES**
- 1 RELOCATE EXISTING FAN COIL IN ROTATED POSITION AS SHOWN. PROVIDE NEW PIPING CONNECTIONS. MATCH EXISTING PIPE SIZING.
  - 2 NEW THERMOSTAT. TIE TO EXISTING VAV BOX CONTROLS.
  - 3 RELOCATE EXISTING FAN COIL THERMOSTAT TO POSITION SHOWN.
  - 4 VERIFY PROPER THERMOSTAT FUNCTIONALITY.



**KEY PLAN**

Intermountain Health  
Intermountain Medical Center  
Angio Lab #3 Remodel Project

5121 South Cottonwood Street  
Murray, UT 84107

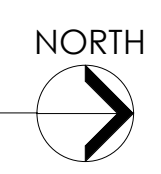
NJRA Project # 22247.00  
Construction Documents June 13, 2023

LEVEL 1  
MECHANICAL  
PIPING PLAN -  
AREA A

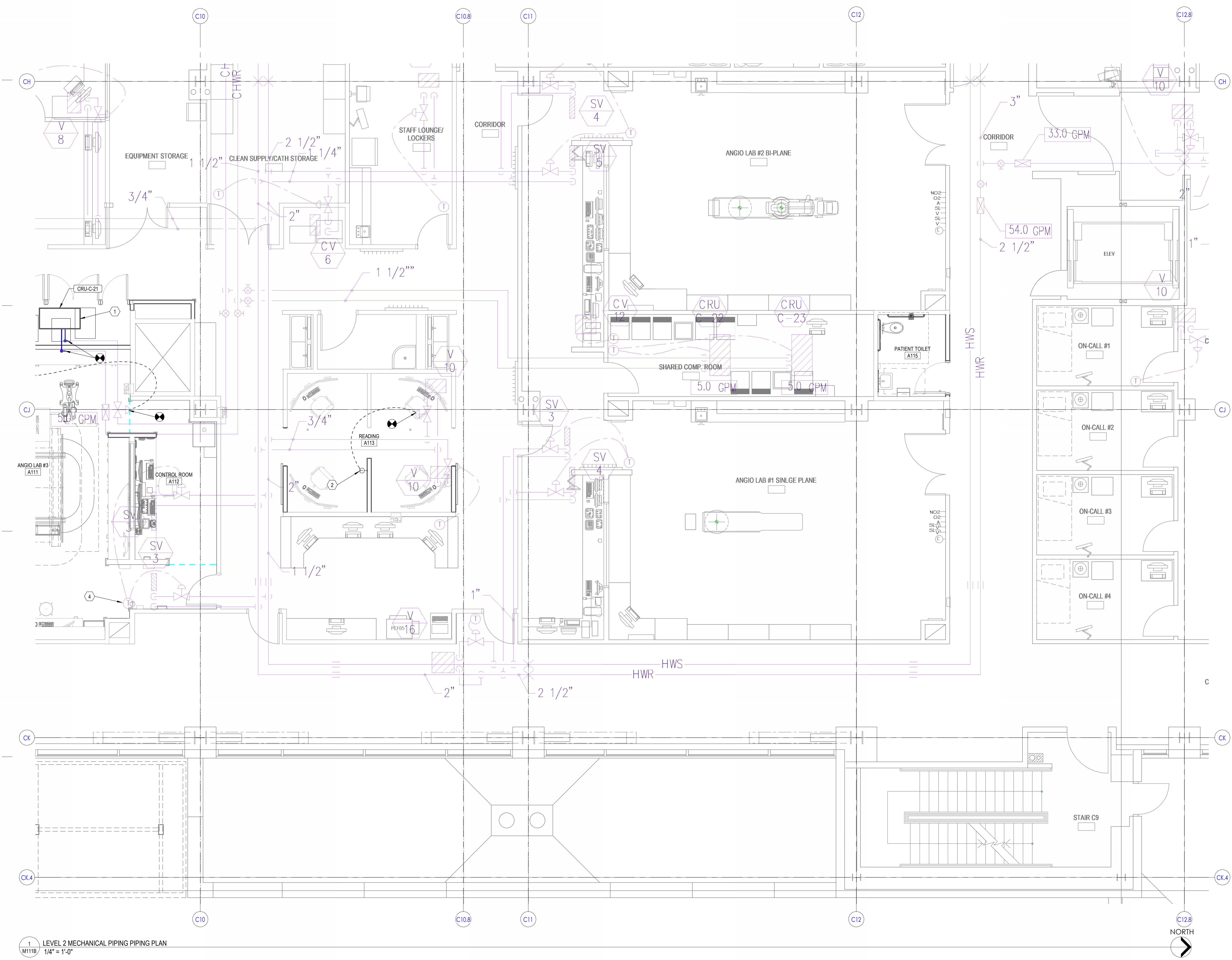
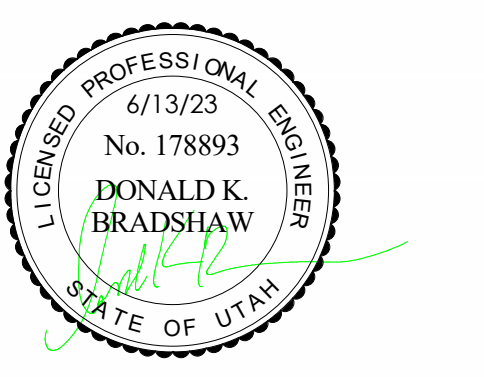
**M111A**

6/13/2023 4:03:18 PM

1 LEVEL 2 MECHANICAL PIPING PLAN  
M111A 1/4" = 1'-0"







KEY PLAN

Intermountain Health  
Intermountain Medical Center  
Angio Lab #3 Remodel Project

5121 South Cottonwood Street  
Murray, UT 84107

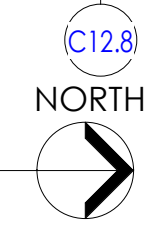
NJRA Project # 22247.00  
Construction Documents June 13, 2023

LEVEL 1  
MECHANICAL  
PIPING PLAN -  
AREA B

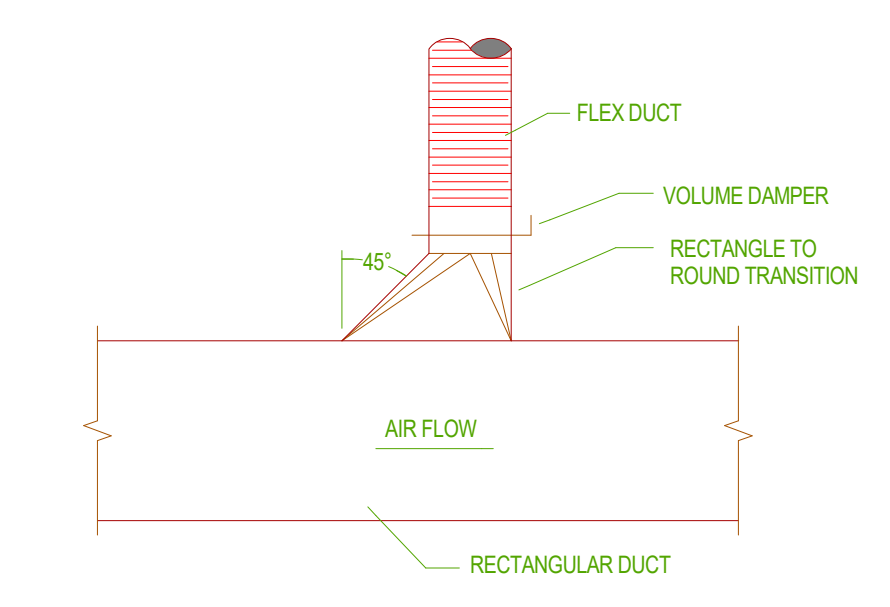
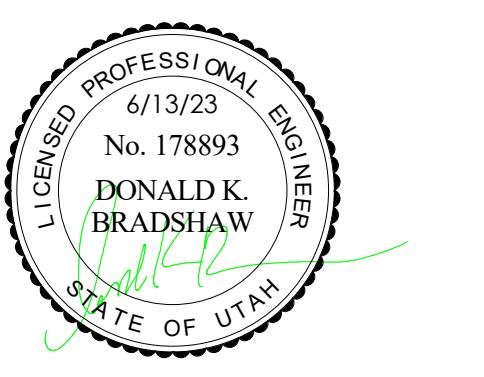
M111B

6/13/2023 4:03:49 PM

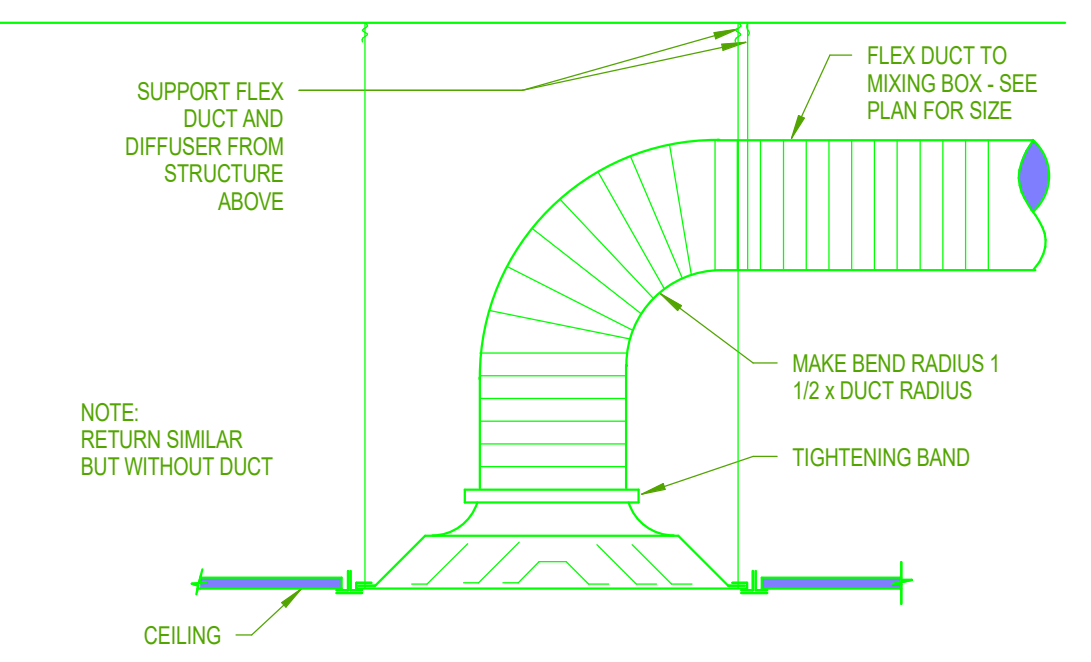
1 LEVEL 2 MECHANICAL PIPING PLAN  
M111B 1/4" = 1'-0"



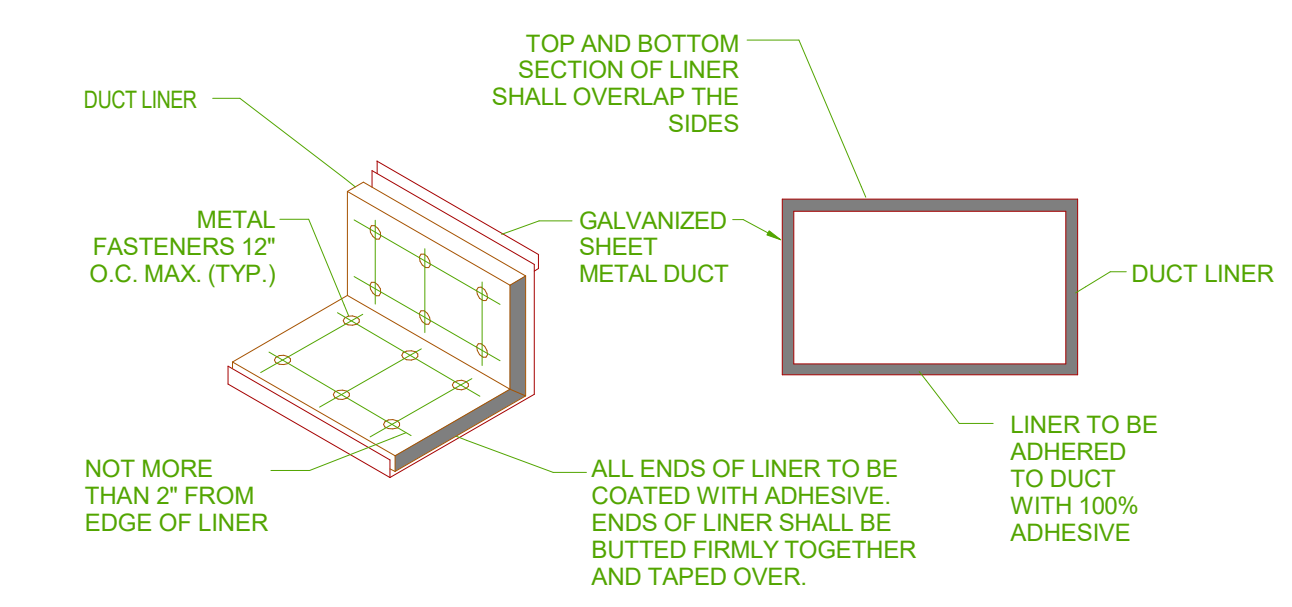




**1**  
MODEL  
**HIGH EFFICIENCY TAKE-OFF DETAIL**  
NO SCALE



**2**  
MODEL  
**DIFFUSER CONNECTION DETAIL**  
NO SCALE

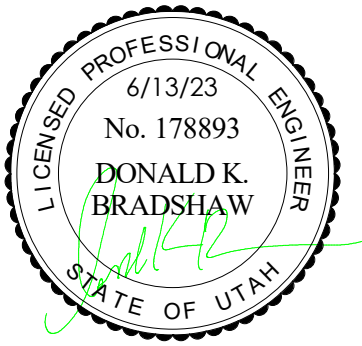


**3**  
MODEL  
**DUCT LINER DETAIL**  
NO SCALE

Intermountain Health  
**Intermountain Medical Center**  
**Angio Lab #3 Remodel Project**

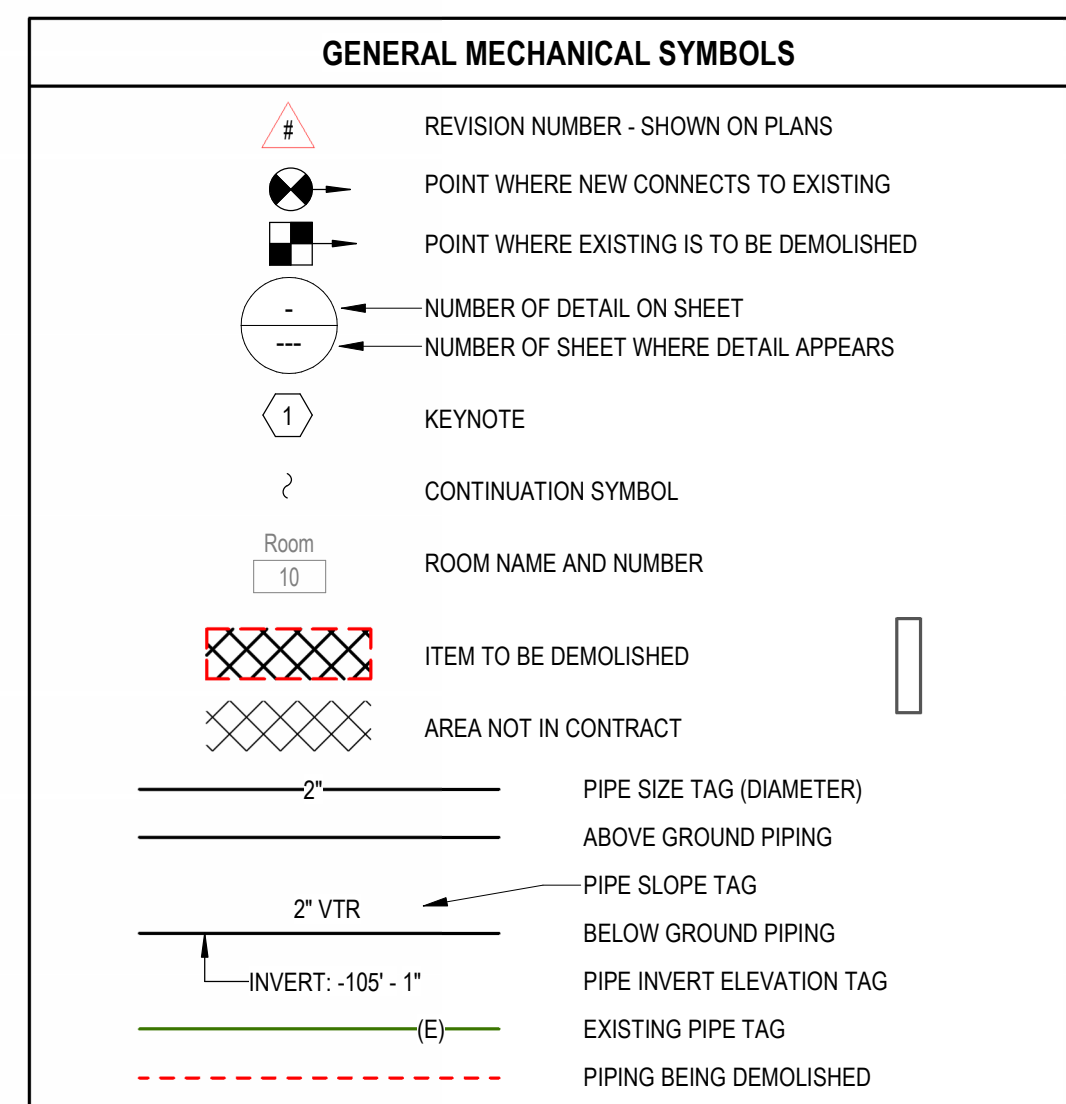
5121 South Cottonwood Street  
Murray, UT 84107





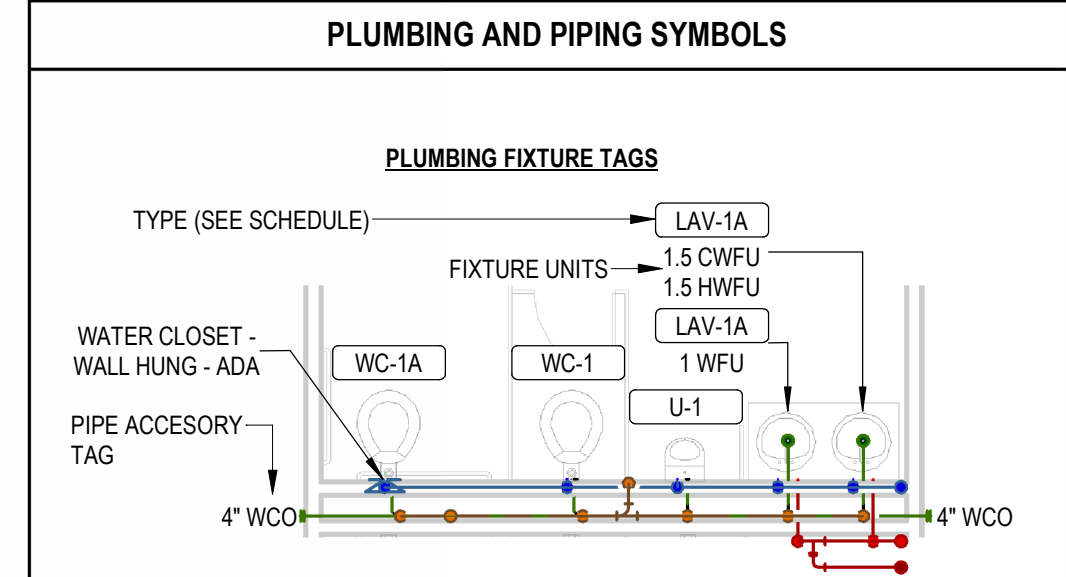
GRILLES, REGISTERS AND DIFFUSERS			
ID	MANUFACTURER	MODEL	DESCRIPTION
CD1	EH PRICE	SPD	<p>FACE STYLE: SQUARE PLAQUE DIFFUSER FACE SIZE: 24" x 24", 24" x 12" OR 12" x 12" AS REQUIRED TO FIT CEILING TILE SPACE AVAILABLE APPLICATION: ENGINEERED VAV SYSTEMS MATERIAL: STEEL FINISH: B12 WHITE POWDERCOAT</p> <p>MOUNTING-FRAME: SURFACE OR LAY-IN, (CW CEILING TYPE.) PATTERN: 300' RADIAL HORIZONTAL AIR PATTERN DAMPER: OPPOSED BLADE MAX NC - 30 DAMPER: NONE REMOVABLE FACE</p>
RG1	EH PRICE	PDDR	<p>FACE STYLE: PERFORATED RETURN AIR UNIT FACE SIZE: 24" x 24", 24" x 12" OR 12" x 12" AS REQUIRED TO FIT CEILING TILE SPACE... APPLICATION: AIR RETURN MATERIAL: STEEL FINISH: B12 WHITE POWDERCOAT</p> <p>MOUNTING-FRAME: SURFACE OR LAY-IN, (CW CEILING TYPE.) DAMPER: NONE MAX NC - 30 REMOVABLE FACE &amp; CORE</p>
EG-1	EH PRICE	80	<p>FACE STYLE: CRATE RETURN AIR UNIT FACE SIZE: 24" x 24", 24" x 12" OR 12" x 12" AS REQUIRED TO FIT CEILING TILE SPACE... APPLICATION: PRESSURIZED AIR RETURN MATERIAL: STEEL FINISH: B12 WHITE POWDERCOAT</p> <p>MOUNTING-FRAME: SURFACE OR LAY-IN, (CW CEILING TYPE.) DAMPER: OPPOSED BLADE MAX NC - 30 REMOVABLE FACE &amp; CORE</p>
SWS1	EH PRICE	520S	<p>FACE STYLE: DOUBLE DEFLECTION HIGH SIDEWALL SUPPLY REGISTER APPLICATION: CONSTANT VOLUME BLADE ORIENTATION: VERTICAL FRONT WITH REAR HORIZONTAL ADJUSTABLE VANES, FRONT BLADES PARALLEL TO SHORT DIMENSION MATERIAL: STEEL</p> <p>FINISH: B12 WHITE POWDERCOAT FRAME: 1.25" BORDER MOUNTING: SURFACE PATTERN: ADJUSTIBLE DAMPER: NONE MAX NC - 30 CORE: REMOVABLE</p>
SWR1	EH PRICE	535 S	<p>FACE STYLE: SIDE WALL RETURN AIR GRILLE ARRANGEMENT: STATIONARY HORIZONTAL BLADE ORIENTATION: 45 DEG DEFLECTION VANES SPACED AT 1/2 INCH CENTERS. FRONT BLADES PARALLEL TO SHORT DIMENSION MATERIAL: STEEL FINISH: B12 WHITE POWDERCOAT</p> <p>FRAME: 1.25 INCH FLAT / BORDER MOUNTING: SURFACE PATTERN: PERMANENT 45 DEGREE DEFLECTION DAMPER: OPPOSED BLADE MAX NC - 30 REMOVABLE FACE &amp; CORE</p>





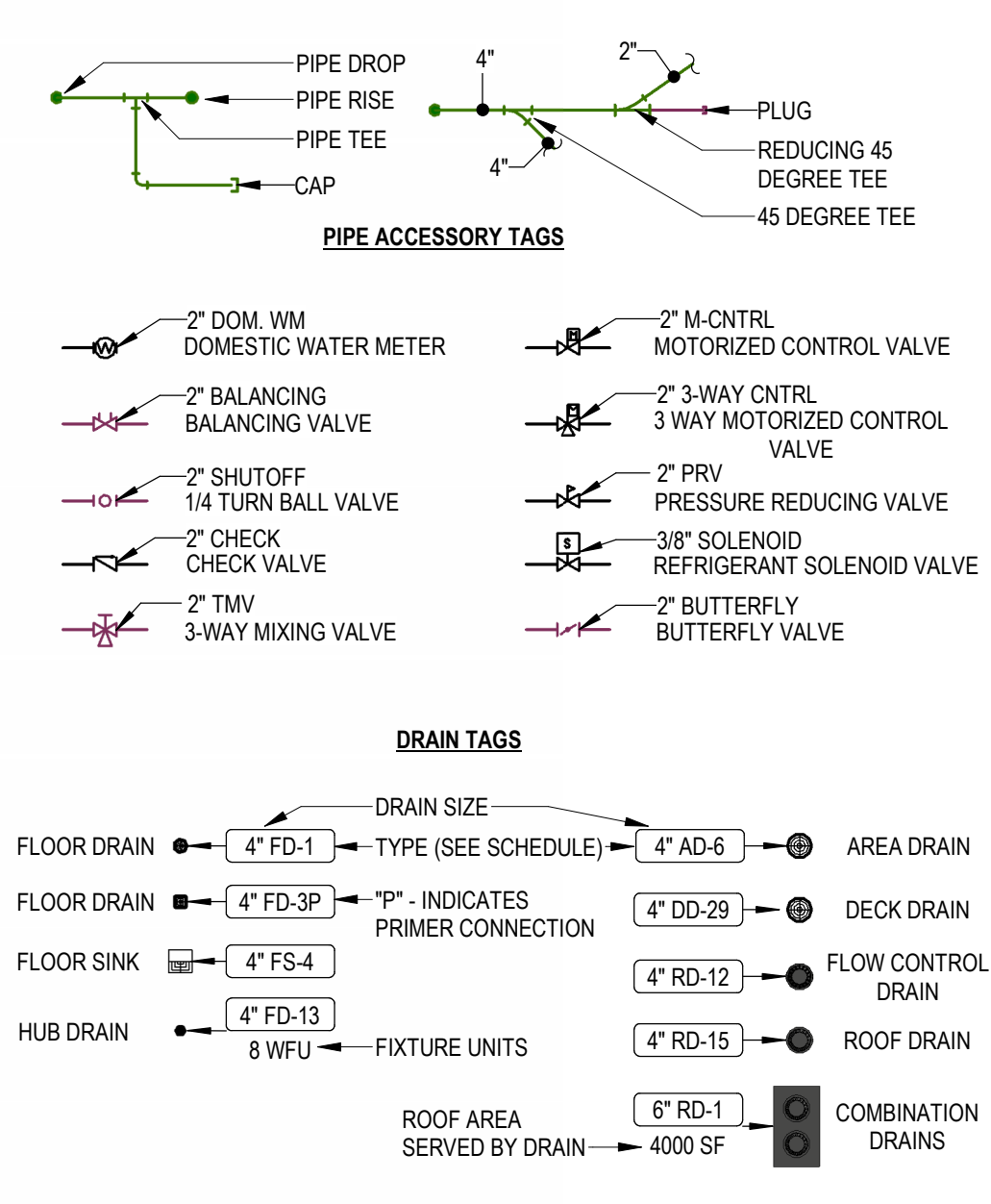
### ABBREVIATIONS

Ø	ROUND	LVR	LOUVER
ABV	ABOVE	LWT	LEAVING WATER TEMPERATURE
AC	AIR CONDITIONING	M/A	MIXED AIR
AD	AREA DRAIN	MAX	MAXIMUM
ADD	ADDENDUM	MTH	ONE THOUSAND BTU PER HOUR
AFF	ABOVE FINISHED FLOOR	MCF	ONE THOUSAND CUBIC FEET
AFUE	ANNUAL FUEL UTILIZATION EFFICIENCY	MD	MOTORIZED DAMPER
ALT	ALTERNATE	MECH	MECHANICAL
AP	ACCESS PANEL	MFR	MANUFACTURER
ARCH	ARCHITECT/ARCHITECTURAL	MIN	MINIMUM
BFF	BELOW FINISHED FLOOR	MISC	MISCELLANEOUS
BLW	BELOW	MTR	MOTOR
BTU	BRITISH THERMAL UNITS	MUA	MAKE-UP AIR
BTUH	BRITISH THERMAL UNITS PER HOUR	NC	NOISE CRITERIA
CAP	CAPACITY	NO	NORMALLY CLOSED
CB	CATCH BASIN	NIC	NOT IN CONTRACT
CFM	CUBIC FEET PER MINUTE	NO	NUMBER
CLS	CEILING	NO	NORMALLY OPEN
CO	CLEAN OUT	NTS	NOT TO SCALE
CW	COLD WATER	O	OXYGEN
D	DEGREE	O/A	OUTSIDE AIR
DB	DRY BULB	ORD	OVERFLOW ROOF DRAIN
DA	DIAMETER	PD	PRESSURE DROP
DN	DOWN	PV	POST INDICATOR VALVE
DW	DISTILLED WATER	PLBG	PLUMBING
EA	EACH	PRESS	PRESSURE
EAT	ENTERING AIR TEMPERATURE	PRV	PRESSURE REDUCING VALVE
ELEC	ELECTRICAL	PSI	POUNDS PER SQUARE INCH
EQUIP	EQUIPMENT	PSIG	POUNDS PER SQUARE INCH GAUGE
ENC	ELECTRO WATER COOLER	PWR	POWER
EWT	ENTERING WATER TEMPERATURE	R	DUCT RISER
EA	EXHAUST AIR	R/A	RETURN AIR
EXIST	EXISTING	RCP	RADIANT CEILING PANEL
F	DEGREES FAHRENHEIT	RD	ROOF DRAIN
FOO	FLOOR CLEAN OUT	REC	RECESSED
FD	FLOOR DRAIN	RED	REDUCER
FD	FIRE DAMPER	RH	RELATIVE HUMIDITY
FDV	FIRE DEPARTMENT VALVE	R/A	RELIEF AIR
FL	FLOOR	RM	ROOM
FO	FUEL OIL	RPM	REVOLUTIONS PER MINUTE
FOV	FUEL OIL VENT	RW	RAIN WATER
FOR	FUEL OIL RETURN	SF	SQUARE FOOT
FOS	FUEL OIL SUPPLY	S/A	SUPPLY AIR
FPM	FEET PER MINUTE	SAN	SANITARY
FS	FLOOR SINK	SF	SQUARE FOOT
FT	FOOT/FEET	SD	SMOKE DAMPER
FTR	FIN TUBE RADIATION	SM	SURFACE MOUNT
GAL	GALLON	SP	STANDPIPE
GC	GENERAL CONTRACTOR	SP	STATIC PRESSURE
GPM	GALLONS PER MINUTE	STM	STEAM
GW	GREASE WASTE	T	THERMOSTAT
HB	HOSE BIB	TD	TEMPERATURE DROP
HP	HORSE POWER	TDR	TRENCH DRAIN
HTG	HEATING	TEMP	TEMPERATURE
HTR	HEATER	TRP	TYPICAL
HW	HOT WATER	UG	UNDERGROUND
HYD	HYDRANT	VAC	VACUUM
ID	INDIRECT	V	VENT
IN	INCH	VAV	VARIABLE AIR VOLUME
INV	INVERT	VENT	VENTILATION
LB	POUND	VTR	VENT THROUGH ROOF
LBHR	POUNDS PER HOUR	W	WASTE
LAT	LEAVING AIR TEMPERATURE	WB	WET BULB
LP	LOW PRESSURE	WOO	WALL CLEAN OUT
LPG	LIQUEFIED PETROLEUM GAS	WH	WALL HYDRANT



### PLUMBING AND PIPING SYMBOLS

CHWR	CHILLED WATER RETURN
CHWS	CHILLED WATER SUPPLY
CD	CONDENSATE DRAINAGE
CWR	CONDENSER WATER RETURN
CWS	CONDENSER WATER SUPPLY
GWR	GEOTHERMAL WATER RETURN
GWS	GEOTHERMAL WATER SUPPLY
HWR	HEATING WATER RETURN
HWS	HEATING WATER SUPPLY
NG	NATURAL GAS
PG	PROPANE GAS
REF-L	REFRIGERANT-LIQUID
REF-S	REFRIGERANT-GAS
REF-HG	REFRIGERANT-HOT GAS
STM	STEAM
CDR	CONDENSATE RETURN
CWW	COMBINATION WASTE & VENT
CA	COMPRESSED AIR
DCW	DOMESTIC COLD WATER
NPCW	NON-POTABLE COLD WATER
S-CW	SOFT COLD WATER
F-CW	FILTERED COLD WATER
RO	REVERSE OSMOSIS WATER
DHW	HOT WATER
DHW 140"	HOT WATER 140"
DHW-R	HOT WATER RECIRCULATION
DHW-R 140"	HOT WATER RECIRCULATION 140"
NPHW	NON-POTABLE HOT WATER
GV	GREASE VENT
GW	GREASE WASTE
IW	INDIRECT WASTE
OV	OIL VENT
OW	OIL WASTE
PD	PUMP DISCHARGE
V	SANITARY VENT
W	SANITARY WASTE
SHWR	SOLAR HOT WATER RETURN
SHWS	SOLAR HOT WATER SUPPLY
RD	ROOF DRAINAGE
RDO	ROOF DRAIN OVERFLOW
CO2	CARBON DIOXIDE
HE	HELIUM
IA	INSTRUMENT AIR
MA	MEDICAL AIR
MV	MEDICAL VACUUM
N2	NITROGEN
N2O	NITROUS OXIDE
OX	OXYGEN
WAGD	WASTE ANESTHESIA GAS DISPOSAL



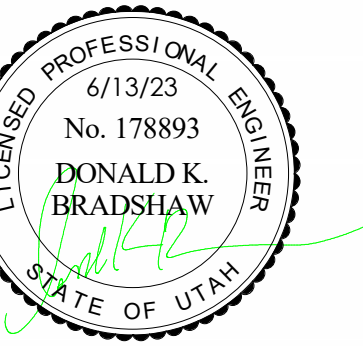
- ### PLUMBING GENERAL NOTES
- UNLESS OTHERWISE NOTED, SLOPE PIPE AS FOLLOWS: WASTE BRANCHES: 1/4" PER FOOT; WASTE MAINS: 1/4" PER FOOT; ROOF DRAIN/ROOF DRAIN OVERFLOW: 1/8" PER FOOT; VERIFY ALL SLOPING WITH LOCAL CODES.
  - ALL WORK DONE SHALL BE PERFORMED WITH WATER CONTROL IN MIND. CONTAINMENT OF WATER IS NECESSARY TO PREVENT WATER FROM DAMAGING AREAS ON FLOORS BELOW.
  - PLUMBING DRAWINGS ARE SCHEMATIC IN NATURE. FIELD VERIFY EXACT PIPE ROUTING AND COORDINATE WITH ALL OTHER TRADES.
  - ALL PIPING IN PLUMBING CHASES SHALL BE ARRANGED TO ALLOW MAINTENANCE ACCESS.
  - NO PIPING TO RUN OVER ELECTRICAL PANELS, VFD'S OR MCC'S. PROTECT EQUIPMENT WITH A 4" DEEP ZONE IN FRONT OF PANELS, VFD'S, AND MCC'S.
  - COORDINATE FAN ROOM FLOOR DRAIN AND FLOOR SINK LOCATIONS WITH COOLING COIL, EVAPORATIVE SECTION, AND HEATING COIL LOCATIONS.
  - CONTRACTOR TO PROVIDE VALVE IDENTIFICATION AND LOCATION ON ALL CEILING TILES WHERE VALVES ARE LOCATED.
  - PIPING AND ROUTING SHOWN, INCLUDING ALL BELOW FLOOR DECK PIPING IS APPROXIMATE. IT IS UP TO THE CONTRACTOR TO FIELD VERIFY THE EXACT LOCATION AND SIZE OF ALL PIPING.
  - REFER TO ARCHITECTURAL DRAWINGS FOR FIXTURE MOUNTING HEIGHTS, DIMENSIONS AND OTHER REQUIREMENTS.
  - CONTRACTOR TO VERIFY CONNECTION SIDE OF ADA FIXTURES AND ADJUST ACCORDINGLY. INSTALL FLUSH VALVES HANDLES ON WIDE SIDE OF ALL FIXTURES.
  - LOCATE ALL VENTS MINIMUM 25' AWAY FROM AIR INTAKES.
  - INSTALL ALL DOMESTIC WATER LINES BELOW DUCTWORK.
  - INSTALL A 24" X 24" ACCESS DOOR BELOW ALL ISOLATION VALVES, BALANCING VALVES AND WATER HAMMER ARRESTORS WHERE MOUNTED ABOVE HARD CEILING.
  - MOUNT ALL ISOLATION VALVES, CONTROL VALVES, BALANCING VALVES, ETC. NEAR CEILING HEIGHT FOR ACCESSIBILITY.
  - INSTALL ALL EQUIPMENT WITH SUFFICIENT CLEARANCE FOR MAINTENANCE PER MANUFACTURERS RECOMMENDATION.
  - COORDINATE ALL FLOOR PENETRATIONS WITH STRUCTURAL AND PROVIDE SLEEVES AS NECESSARY.
  - COORDINATE THE LOCATION OF THE FLOOR DRAIN, SHOWER DRAIN, OR FLOOR SINK WITH ARCHITECTURAL AND STRUCTURAL, TYPICAL.
  - SEE PLUMBING FIXTURE SCHEDULE FOR PIPE SIZES OF WASTE, VENT AND DOMESTIC WATER TOPFROM SINGLE FIXTURE.
  - HOSE BIBBS SHOWN AT LAVATORIES ARE TO BE MOUNTED AT AN ACCESSIBLE LOCATION UNDER THE LAVATORY.
  - LOCATE CIRCUIT SETTERS, VALVES, WATER HAMMER ARRESTORS, ETC. IN ACCESSIBLE LOCATIONS. PROVIDE 24" X 24" ACCESS PANEL WHERE ITEM IS LOCATED ABOVE A HARD CEILING. PROVIDE APPROPRIATELY SIZED ACCESS DOORS TO ANY OF THESE ITEMS INSTALLED IN A WALL. COORDINATE ACCESS DOOR SIZE, LOCATION, AND STYLE WITH ARCHITECT.
  - FIELD VERIFY LOCATION AND INVERTS OF SITE UTILITIES PRIOR TO INSTALLATION.
  - FIELD VERIFY ALL NEW WATER, WASTE AND VENT PIPING CONNECTIONS AND PROVIDE NEW CONNECTIONS AS REQUIRED FOR PROPERLY OPERATING SYSTEMS.
  - WASTE AND VENT PIPING BELOW FLOOR AND THROUGH FLOOR TO BE 2" MINIMUM.
  - INSTALL CLEANOUTS IN DRAIN PIPING AS INDICATED, AND WHERE NOT INDICATED, ACCORDING TO THE FOLLOWING:
    - SIZE SAME AS DRAINAGE PIPING UP TO 4" NPS. USE 4" NPS FOR LARGER. DRAINAGE PIPING UNLESS LARGER CLEANOUT IS INDICATED.
    - LOCATE AT MINIMUM INTERVALS OF 50 FT FOR PIPING 4" NPS AND SMALLER AND 100 FT FOR LARGER PIPING.
    - LOCATE AT THE BASE OF EACH VERTICAL STACK.

- ### MEDICAL GAS GENERAL NOTES
- MEDICAL GAS PIPING IS TO BE RUN ABOVE THE CEILING, UNLESS NOTED OTHERWISE.
  - MEDICAL GAS PIPING IS SCHEMATIC IN NATURE. FIELD VERIFY EXACT PIPE ROUTING AND COORDINATE WITH ALL OTHER TRADES.
  - MOUNT ALL SERVICE VALVES NEAR CEILING HEIGHT FOR ACCESSIBILITY.
  - ALL SERVICE VALVES SHALL BE LOCKABLE. PROVIDE FRANGIBLE LOCK FOR ALL SERVICE VALVES.
  - ALL ZONE VALVE BOXES REQUIRE SOURCE AIR FROM LEFT SIDE AND CONTROLLED AIR FROM RIGHT SIDE.
  - ROUTE DOMESTIC WATER, FIRE PROTECTION, SANITARY WASTE, ROOF DRAIN, CAMPUS CHILLED OR HOT WATER, AND ANY OTHER UTILITY SERVICES TO SITE UTILITIES 5'-0" FROM BUILDING UNLESS NOTED OTHERWISE. REFER TO CIVIL PLANS.
  - LOCATE VALVING, ACCESSORIES, AND EQUIPMENT IN ACCESSIBLE LOCATIONS. WHERE LOCATED ABOVE HARD CEILING PROVIDE AN ACCESS DOOR IN CEILING. MINIMUM ACCESS DOOR SIZE OF 24" X 24". COORDINATE EXACT LOCATION AND STYLE WITH ARCHITECT. EQUIPMENT SHALL BE LOCATED IN THE CEILING CAVITY SO IT CAN BE SAFELY SERVICED FROM SOMEONE STAND ON A LADDER PLACED BELOW THE CEILING ACCESS.
  - WHERE VALVING, ACCESSORIES, OR EQUIPMENT IS LOCATED IN A WALL, PROVIDE AN APPROPRIATELY SIZED ACCESS DOOR. COORDINATE ACCESS DOOR SIZE, LOCATION, AND STYLE WITH ARCHITECT.
  - CONTRACTOR TO PROVIDE VALVE IDENTIFICATION AND LOCATION ON ALL CEILING TILES WHERE VALVES ARE LOCATED.

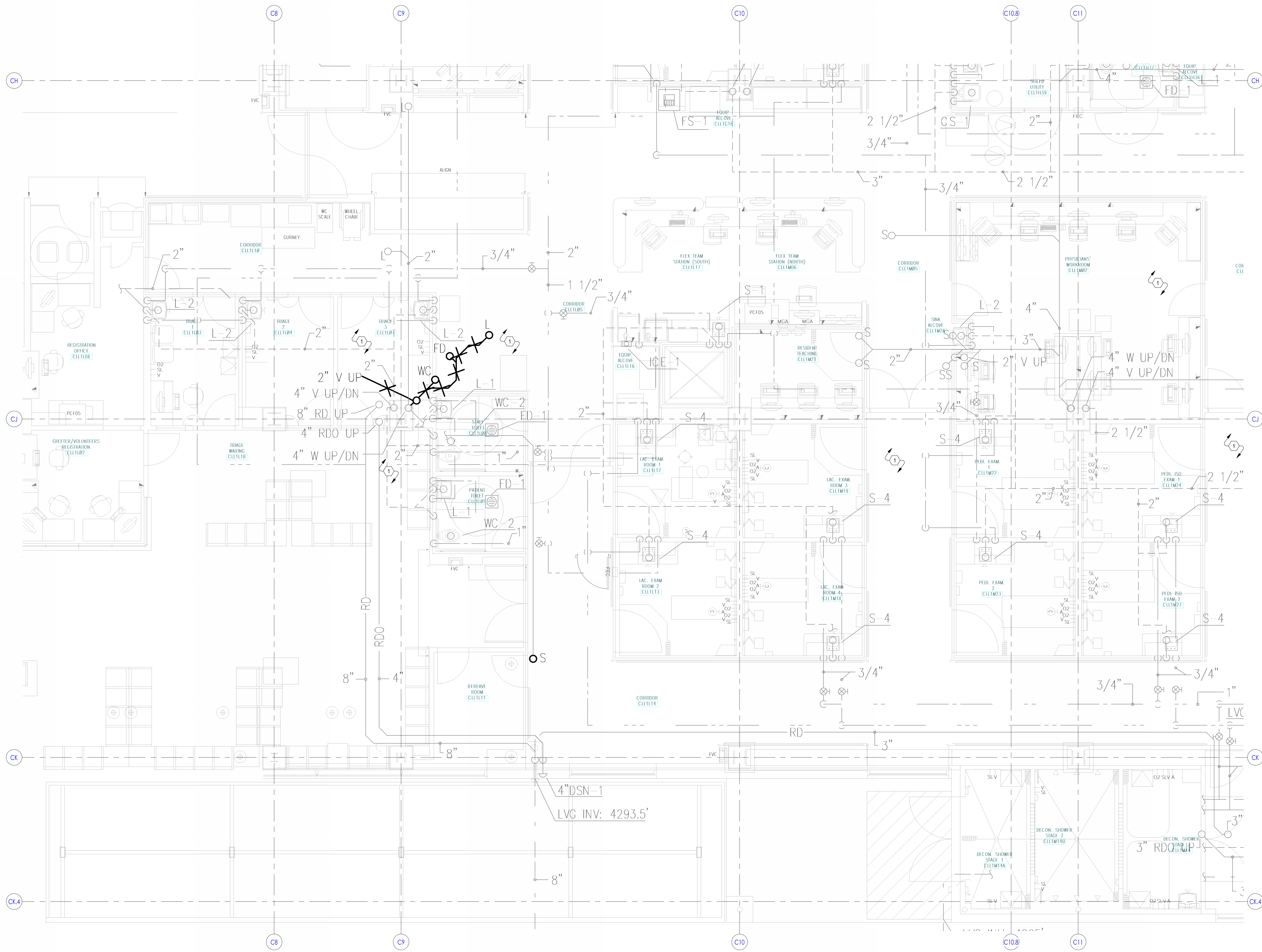
- ### PROJECT GENERAL NOTES
- THE PROJECT GENERAL NOTES APPLY TO ALL DISCIPLINES.
  - REMOVE ALL UNUSED PIPING, DUCTWORK, EQUIPMENT, AND ACCESSORIES.
  - THE MECHANICAL CONTRACTOR SHALL BE RESPONSIBLE FOR FIELD VERIFYING ALL EXISTING CONDITIONS FOR PLUMBING AND MECHANICAL SYSTEMS WITHIN THE TENANT SPACE AND WITHIN CLOSE PROXIMITY TO THE TENANT SPACE. THE CONTRACTOR WILL FIELD VERIFY AS MUCH AS IS REASONABLE BEFORE THE FINAL BID. AFTER THE FINAL BID THE CONTRACTOR WILL NOTIFY THE OWNER, ARCHITECT, AND MECHANICAL DESIGN ENGINEER IMMEDIATELY UPON DISCOVERY OF EXISTING CONDITIONS THAT MAY AFFECT THE DESIGN.
  - THE MECHANICAL CONTRACTOR SHALL PERFORM SERVICE AND REPAIR ON THE EXISTING EQUIPMENT AND ITS ACCESSORIES AS FOLLOWS: CLEAN ALL COILS, REPLACE THE FILTERS AND BELTS, INSPECT, REPAIR, OR REPLACE THE ECONOMIZERS, DRIVERS AND FAN BEARINGS, MOTORS, CONTROL COMPONENTS, VALVES, AND ANY OTHER ITEM NECESSARY FOR A COMPLETE AND PROPER OPERATING SYSTEM. THIS CONTRACTOR SHALL ALSO VISIT THE SITE, PRIOR TO FINAL BIDDING, AND VERIFY ALL EXISTING SITE CONDITIONS. PROVIDE ALL MATERIAL AND COMPONENTS AS NEEDED TO BRING THE UNITS TO FULL COMPLIANCE OF THE LANDLORD'S CRITERIA AND LOCAL AUTHORITY HAVING JURISDICTION.
  - WHERE FLOOR DRAINS OCCUR WITH THE LIMITS OF CONSTRUCTION, PREVENT CONSTRUCTION DEBRIS FROM ENTERING DRAIN BODY BY SEALING DRAIN OPENING PRIOR TO START OF WORK. UNSAID DRAINS AT COMPLETION OF CONSTRUCTION.
  - COORDINATE INSTALLATION OF PIPING, DUCTWORK, CONDUIT, LIGHTS, CABLE TRAY, STRUCTURE, EQUIPMENT, CEILING, ARCHITECTURAL COMPONENTS, AND ANYTHING ELSE PERTAINING TO THE PROJECT TO PREVENT CONFLICTS.
  - THE CONTRACTOR SHALL BE FAMILIAR WITH ALL THE CONDITIONS BOTH EXISTING AND THOSE ILLUSTRATED BY THESE DOCUMENTS AND THOSE OF OTHER DISCIPLINES, INCLUDING, BUT NOT LIMITED TO ARCHITECTURAL, CIVIL, ELECTRICAL, VENTILATION, PLUMBING, AND OTHER SYSTEMS INVOLVED ON THIS PROJECT.
  - FINAL PRODUCT SHALL BE A COMPLETE AND FUNCTIONING SYSTEM, AND SHALL CONFORM TO ALL REQUIREMENTS OF APPLICABLE FEDERAL, STATE, AND LOCAL CODES, INCLUDING BUT NOT LIMITED TO THE INTERNATIONAL BUILDING CODE, INTERNATIONAL MECHANICAL CODE, AND INTERNATIONAL PLUMBING CODE.
  - LOCATE EQUIPMENT REQUIRING ACCESS 2'-0" MAXIMUM ABOVE CEILING.
  - ALL ROOF MOUNTED EQUIPMENT SHALL BE A MINIMUM 10'-0" FROM EDGE OF ROOF.
  - COORDINATE INSTALLATION OF DUCTWORK, PIPING AND MECHANICAL EQUIPMENT WITH NEC CLEARANCES INCLUDING THE SPACE ABOVE ELECTRICAL PANELS, TRANSFORMERS AND OTHER ELECTRICAL EQUIPMENT. NO PIPING OR DUCTWORK TO RUN OVER ELECTRICAL PANELS, VFD'S OR MCC'S. PROTECT EQUIPMENT WITH A 4" DEEP ZONE IN FRONT OF PANELS, VFD'S AND MCC'S. PROVIDE PANS IF REQUIRED UNDER PIPING.
  - FIRE SEAL AROUND DUCT AND PIPING PENETRATIONS OF FIRE RATED WALLS. THE MECHANICAL CONTRACTOR SHALL BE RESPONSIBLE FOR CAULKING AND SEALING ALL PENETRATIONS IN FIRE AND SMOKE RATED PARTITIONS TO MAINTAIN RATINGS. REFER TO SPECIFICATION.
  - PROVIDE SLEEVES AND/OR OPENINGS TO RUN PIPES AND DUCTS THROUGH FOUNDATIONS, FLOORS, WALLS, AND ROOF.
  - TRANSITION PIPING AND DUCTWORK SIZES TO MATCH THE SIZE OF EQUIPMENT CONNECTION.
  - REFER TO PLUMBING SERIES DRAWINGS FOR GAS PIPING.
  - ALL PIPE AND DUCT SIZES SHOWN SHALL BE CONTINUED IN THE DIRECTION OF FLOW UNTIL ANOTHER SIZE IS SHOWN.
  - FOR DETAILS, EQUIPMENT CONNECTIONS, AND PIPE SIZES NOT SHOWN ON THE SEGMENTS, REFER TO DETAILS, SCHEDULES, AND SPECIFICATIONS.
  - INSTALL ALL EQUIPMENT IN ACCORDANCE WITH THE RESPECTIVE MANUFACTURER'S WRITTEN INSTALLATION INSTRUCTIONS AT A LEVEL OF WORKMANSHIP CONSISTENT WITH THE SPECIFICATIONS.
  - MECHANICAL CONTRACTOR SHALL ENSURE THAT ALL EQUIPMENT IS PROVIDED AND INSTALLED WITH CLEARANCES PER MANUFACTURERS RECOMMENDATIONS. THE CONTRACTOR SHALL MAINTAIN PROPER SERVICE SPACE FOR COIL PULLS, BAS DEVICES, MAINTENANCE ACCESS, ETC.
  - INSTALL EXPOSED PIPING AND DUCTWORK AS HIGH AS PRACTICAL IN ROOMS WITHOUT CEILING.
  - LOCATIONS OF PIPING, DUCTWORK AND EQUIPMENT AS INDICATED ON THE DRAWING, ARE APPROXIMATE AND SUBJECT TO MINOR ADJUSTMENTS IN THE FIELD, INCLUDING, BUT NOT LIMITED TO, OFFSETS AND TRANSITIONS. NEW DUCTWORK, PIPING AND EQUIPMENT SHALL BE COORDINATED WITH STRUCTURE, LIGHTS, REFLECTED CEILING PLANS, CABLE TRAY, ELECTRICAL CONDUIT, PLUMBING, MECHANICAL AND FIRE PROTECTION PIPING, MEDICAL GASES, ALL OTHER TRADES AND ALL OTHER EXISTING CONDITIONS TO AVOID INTERFERENCE IN THE FIELD.
  - THE CONTRACTOR SHALL INFORM THE DESIGNER OF ANY PROPOSED DEVIATIONS FROM THE CONTRACT DOCUMENTS.
  - IF CONTRACTOR ENCOUNTERS MATERIAL WHICH MAY CONTAIN ASBESTOS, IMMEDIATELY STOP WORK IN THIS AREA AND NOTIFY THE OWNER.
  - DETAILS REFERENCE ALL SHEETS.
  - INSTALL ALL PIPING AND DUCTWORK WITHOUT FORCING OR SPRINGING.
  - ROUTE DOMESTIC WATER, FIRE PROTECTION, SANITARY WASTE, ROOF DRAIN, CAMPUS CHILLED OR HOT WATER, AND ANY OTHER UTILITY SERVICES TO SITE UTILITIES 5'-0" FROM BUILDING UNLESS NOTED OTHERWISE. REFER TO CIVIL PLANS.
  - LOCATE VALVING, ACCESSORIES, AND EQUIPMENT IN ACCESSIBLE LOCATIONS. WHERE LOCATED ABOVE HARD CEILING PROVIDE AN ACCESS DOOR IN CEILING. MINIMUM ACCESS DOOR SIZE OF 24" X 24". COORDINATE EXACT LOCATION AND STYLE WITH ARCHITECT. EQUIPMENT SHALL BE LOCATED IN THE CEILING CAVITY SO IT CAN BE SAFELY SERVICED FROM SOMEONE STAND ON A LADDER PLACED BELOW THE CEILING ACCESS.
  - WHERE VALVING, ACCESSORIES, OR EQUIPMENT IS LOCATED IN A WALL, PROVIDE AN APPROPRIATELY SIZED ACCESS DOOR. COORDINATE ACCESS DOOR SIZE, LOCATION, AND STYLE WITH ARCHITECT.
  - CONTRACTOR TO PROVIDE VALVE IDENTIFICATION AND LOCATION ON ALL CEILING TILES WHERE VALVES ARE LOCATED.

\*NOTE\*  
ALL OF GENERAL NOTES ON THIS SHEET ARE TO BE APPLIED TO ALL OTHER DRAWINGS IN THIS SET. THE SYMBOLS AND ABBREVIATIONS SHOWN ON THIS SHEET MAY OR MAY NOT BE USED IN THIS SET OF DRAWINGS.





**KEYNOTES**  
1 EXISTING SHOWN LIGHT TO REMAIN. ITEMS SHOWN DARK AND CROSSED OUT TO BE REMOVED. TYPICAL.



**KEY PLAN**

Intermountain Health  
**Intermountain Medical Center**  
**Angio Lab #3 Remodel Project**

5121 South Cottonwood Street  
Murray, UT 84107

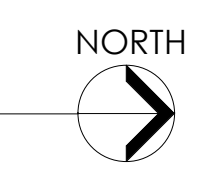
NJRA Project # 22247.00  
Construction Documents June 13, 2023

**UNDERFLOOR  
PLUMBING  
DEMOLITION  
PLAN - AREA A**

**PD100A**

6/13/2023 4:04:06 PM

1 LEVEL 1 PLUMBING DEMOLITION PLAN  
PD100A 1/4" = 1'-0"

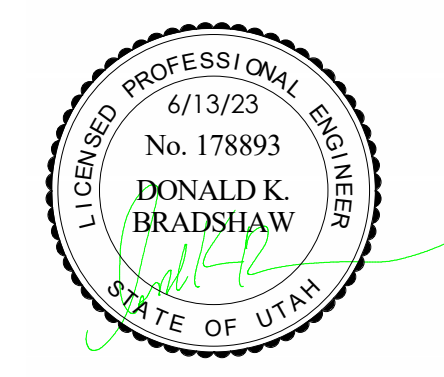




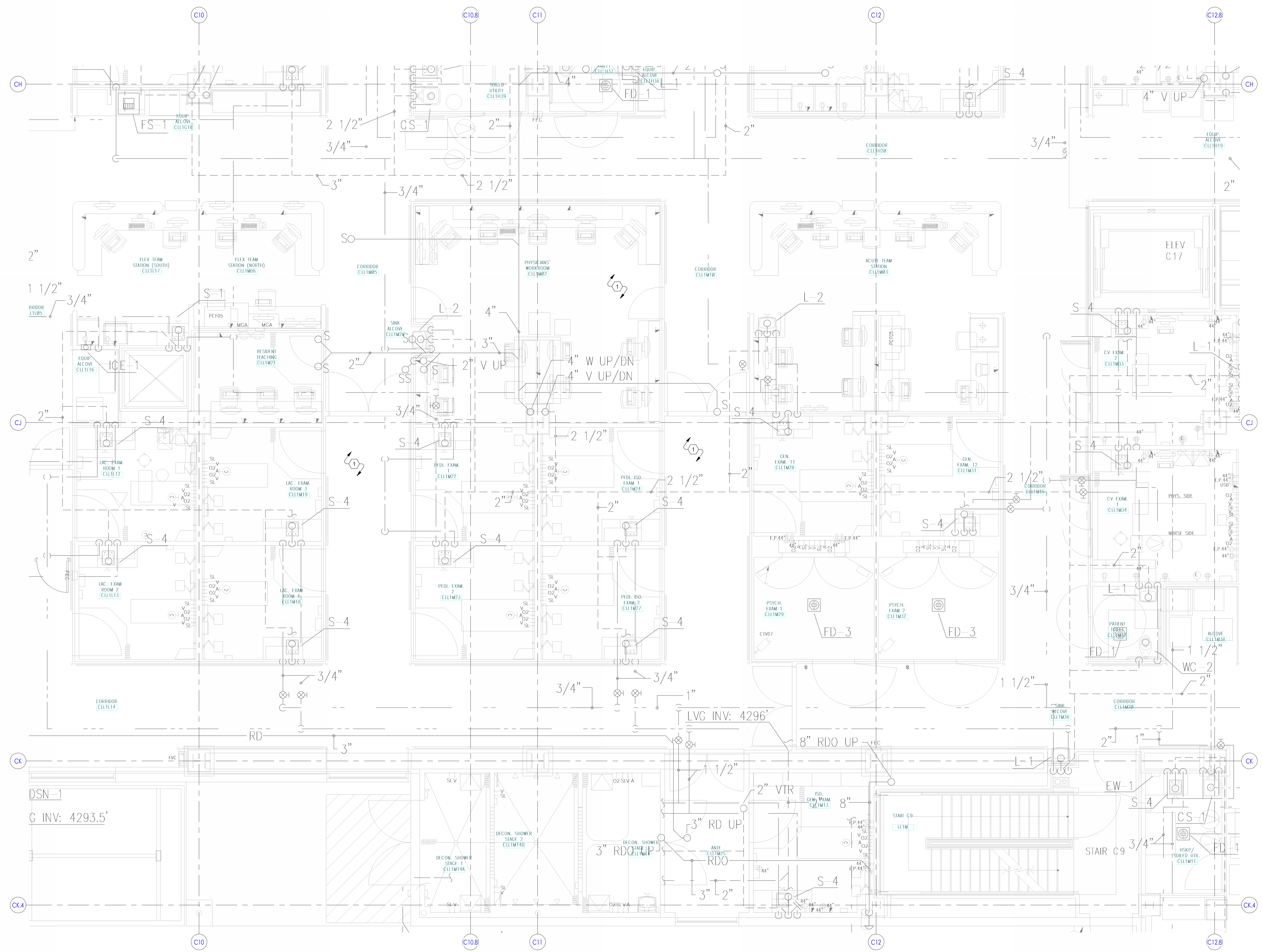
**KEYNOTES**  
 1 EXISTING SHOWN LIGHT TO REMAIN. ITEMS SHOWN DARK AND CROSSED OUT TO BE REMOVED. TYPICAL.



NJRA Architects, Inc.  
 5272 S. College Drive, Suite 104  
 Murray, Utah 84123  
 801.364.9259  
 www.njraarchitects.com



181 East 5600 South  
 Murray, Utah 84107  
 O: (801)550-3148  
 www.vbfa.com  
**VBFA** VBFA Project #: 23038



**KEY PLAN**

Intermountain Health  
**Intermountain Medical Center**  
**Angio Lab #3 Remodel Project**

5121 South Cottonwood Street  
 Murray, UT 84107

NJRA Project # 22247.00  
 Construction Documents June 13, 2023

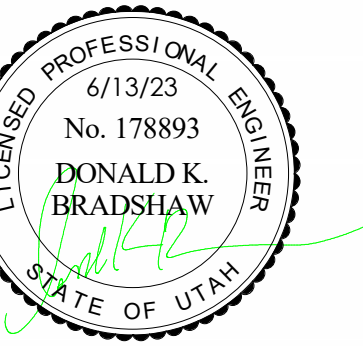
**UNDERFLOOR  
 PLUMBING  
 DEMOLITION  
 PLAN - AREA B**

**PD100B**

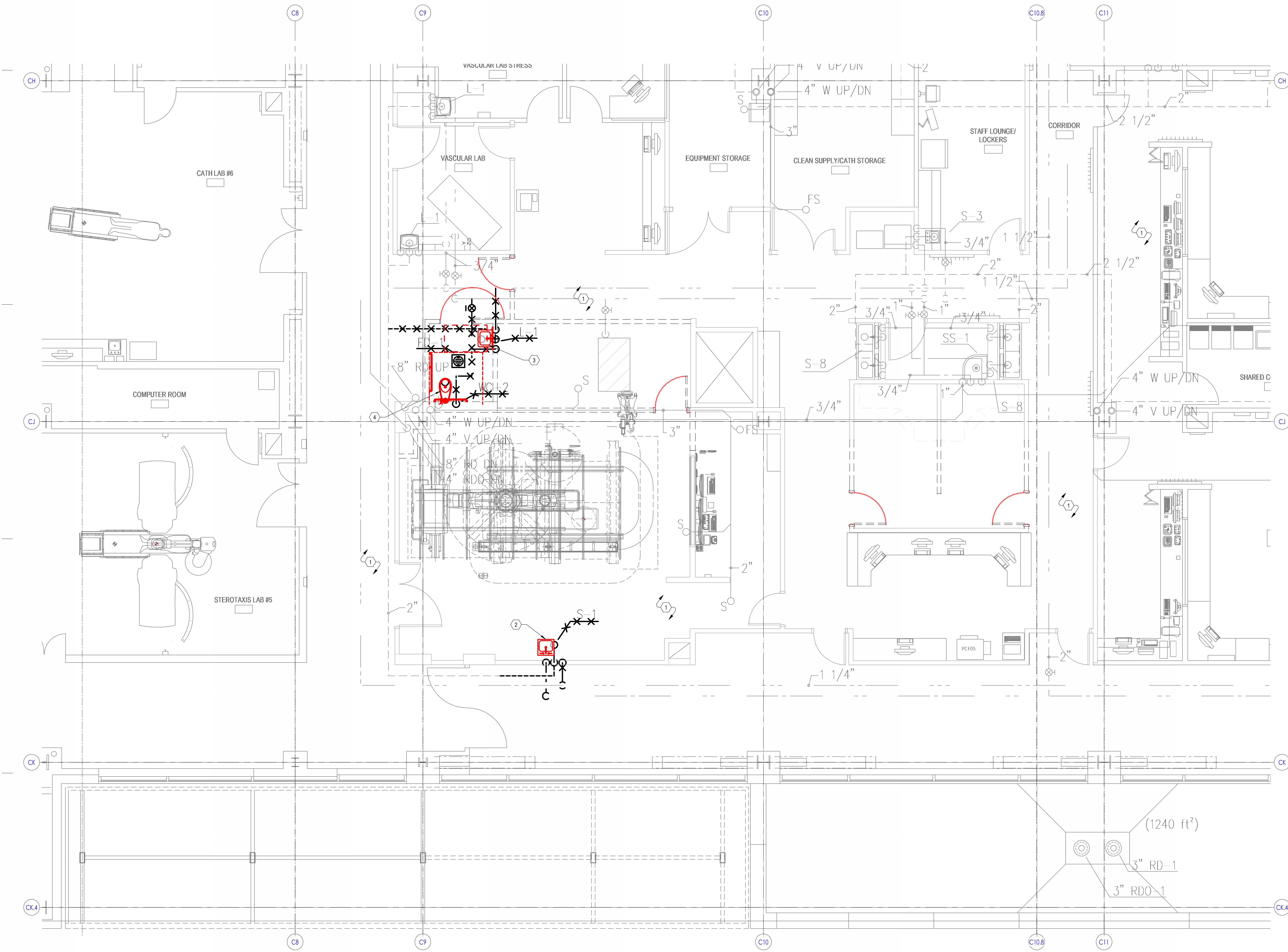
6/13/2023 4:04:18 PM

1 LEVEL 1 PLUMBING DEMOLITION PLAN  
 PD100B 1/4" = 1'-0"





- KEYNOTES**
- EXISTING SHOWN LIGHT TO REMAIN. ITEMS SHOWN DARK AND CROSSED OUT TO BE REMOVED. TYPICAL.
  - REMOVE EXISTING DOMESTIC HOT AND COLD WATER AND VENT LINES BACK TO THE INDICATED LOCATION.
  - REMOVE EXISTING DOMESTIC HOT AND COLD WATER AND VENT LINES BACK TO THE MAIN AND CAP.
  - REMOVE EXISTING DOMESTIC COLD WATER AND VENT LINE BACK TO THE MAINS AND CAP.



**KEY PLAN**

Intermountain Health  
Intermountain Medical Center  
Angio Lab #3 Remodel Project

5121 South Cottonwood Street  
Murray, UT 84107

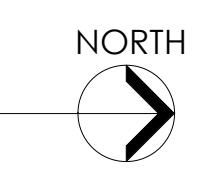
NJRA Project # 22247.00  
Construction Documents June 13, 2023

LEVEL 1  
PLUMBING  
DEMOLITION  
PLAN - AREA A

**PD101A**

6/13/2023 4:04:47 PM

1 LEVEL 2 PLUMBING DEMOLITION PLAN  
PD101A 1/4" = 1'-0"



(1240 ft<sup>2</sup>)

3" RD-1

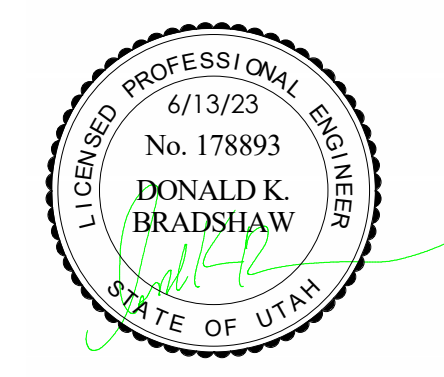
3" RDO-1



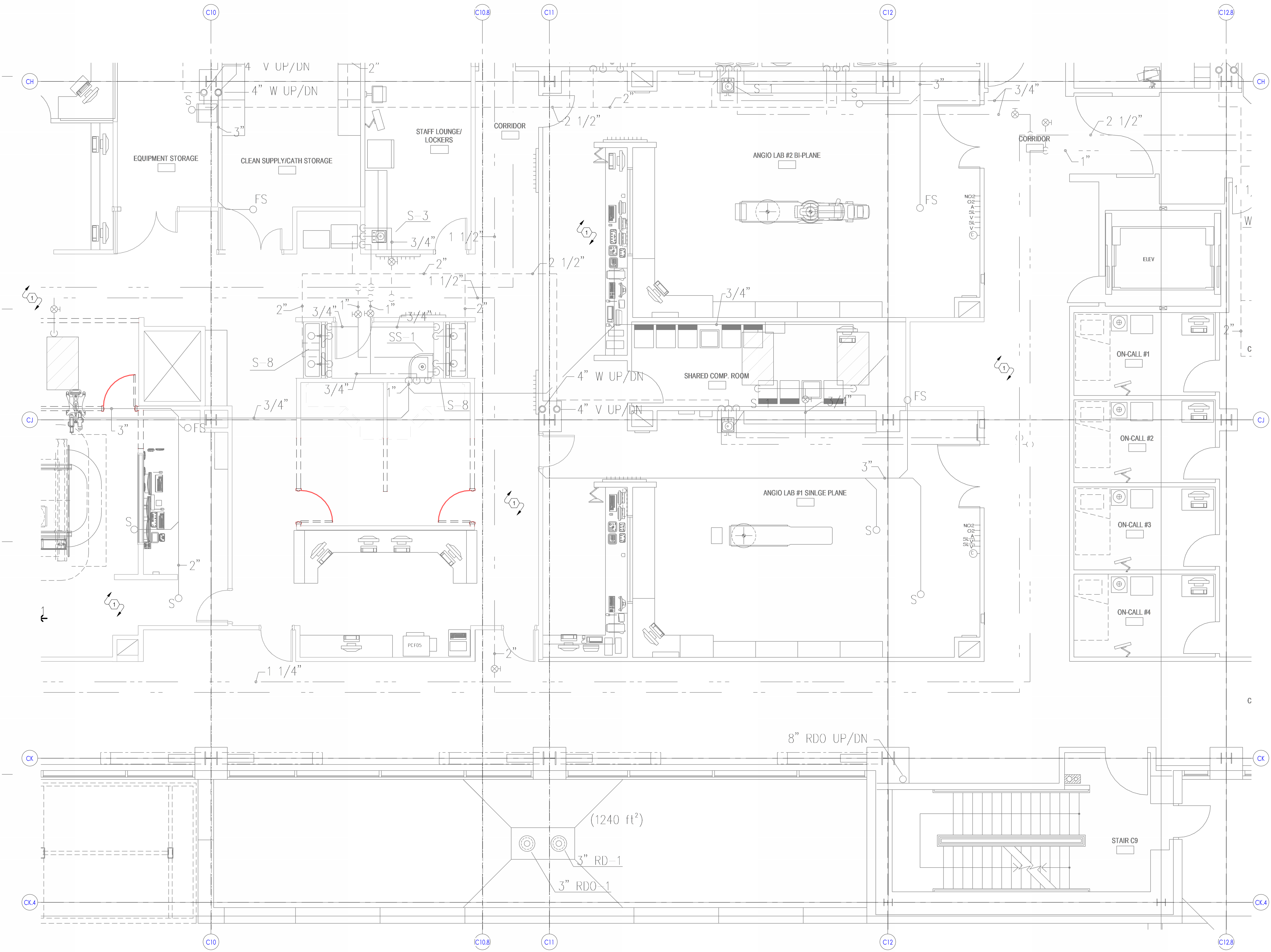
**KEYNOTES**  
 1 EXISTING SHOWN LIGHT TO REMAIN. ITEMS SHOWN DARK AND CROSSED OUT TO BE REMOVED. TYPICAL.



NJRA Architects, Inc.  
 5272 S. College Drive, Suite 104  
 Murray, Utah 84123  
 801.364.9259  
 www.njraarchitects.com



181 East 5600 South  
 Murray, Utah 84107  
 O: (801) 550-3148  
 www.vbfa.com  
**VBFA** Project #: 23038



**KEY PLAN**

Intermountain Health  
**Intermountain Medical Center**  
**Angio Lab #3 Remodel Project**

5121 South Cottonwood Street  
 Murray, UT 84107

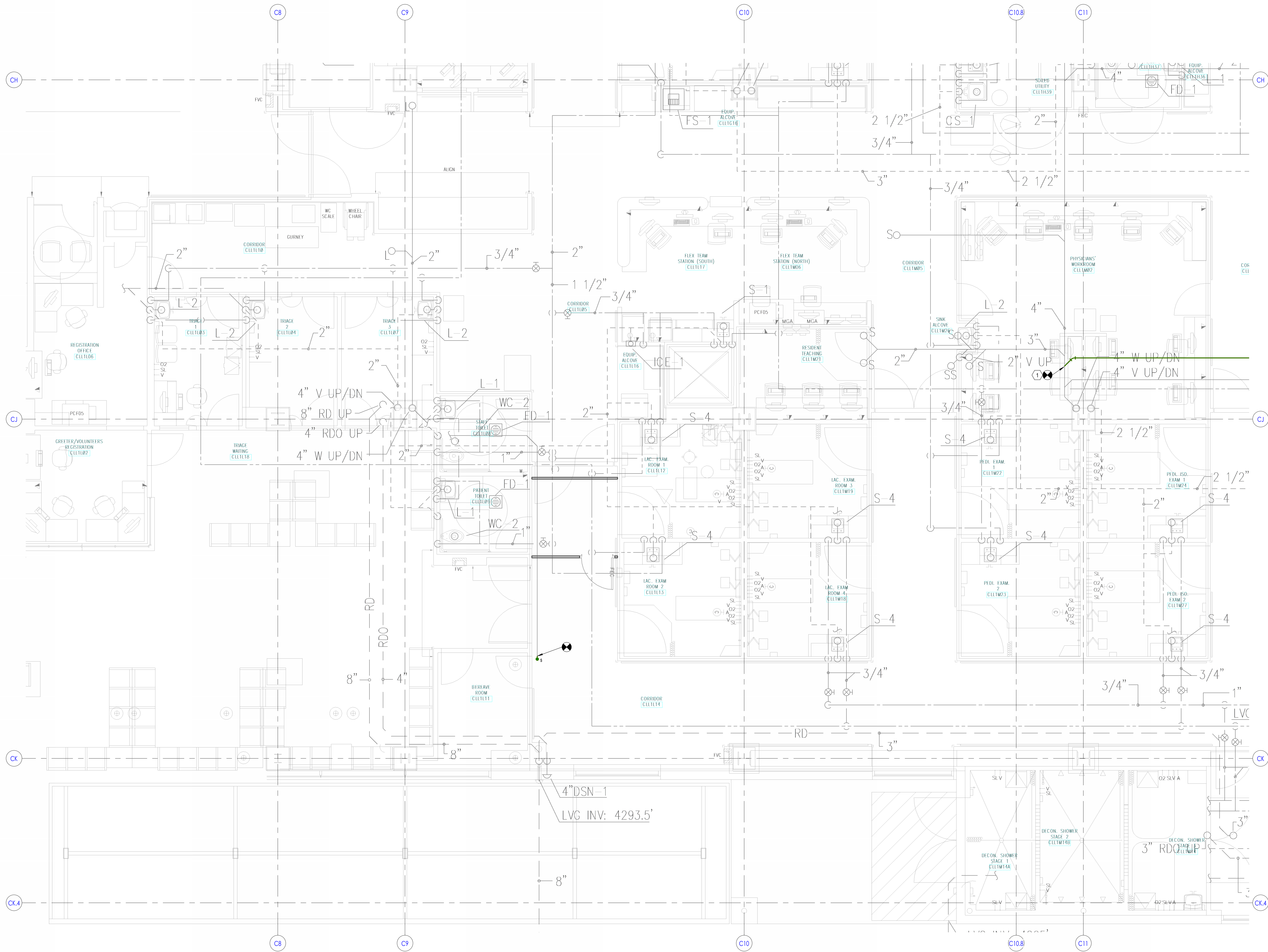
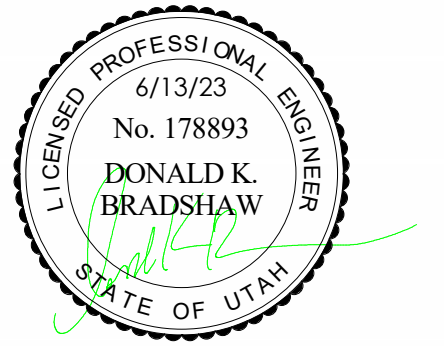
NJRA Project # 22247.00  
 Construction Documents June 13, 2023

**LEVEL 1**  
**PLUMBING**  
**DEMOLITION**  
**PLAN - AREA B**

**PD101B**

6/13/2023 4:05:15 PM

1 LEVEL 2 PLUMBING DEMOLITION PLAN  
 PD101B 1/4" = 1'-0"



KEY PLAN

Intermountain Health  
Intermountain Medical Center  
Angio Lab #3 Remodel Project

5121 South Cottonwood Street  
Murray, UT 84107

NJRA Project # 22247.00  
Construction Documents June 13, 2023

UNDERFLOOR  
PLUMBING  
PLAN

P100A

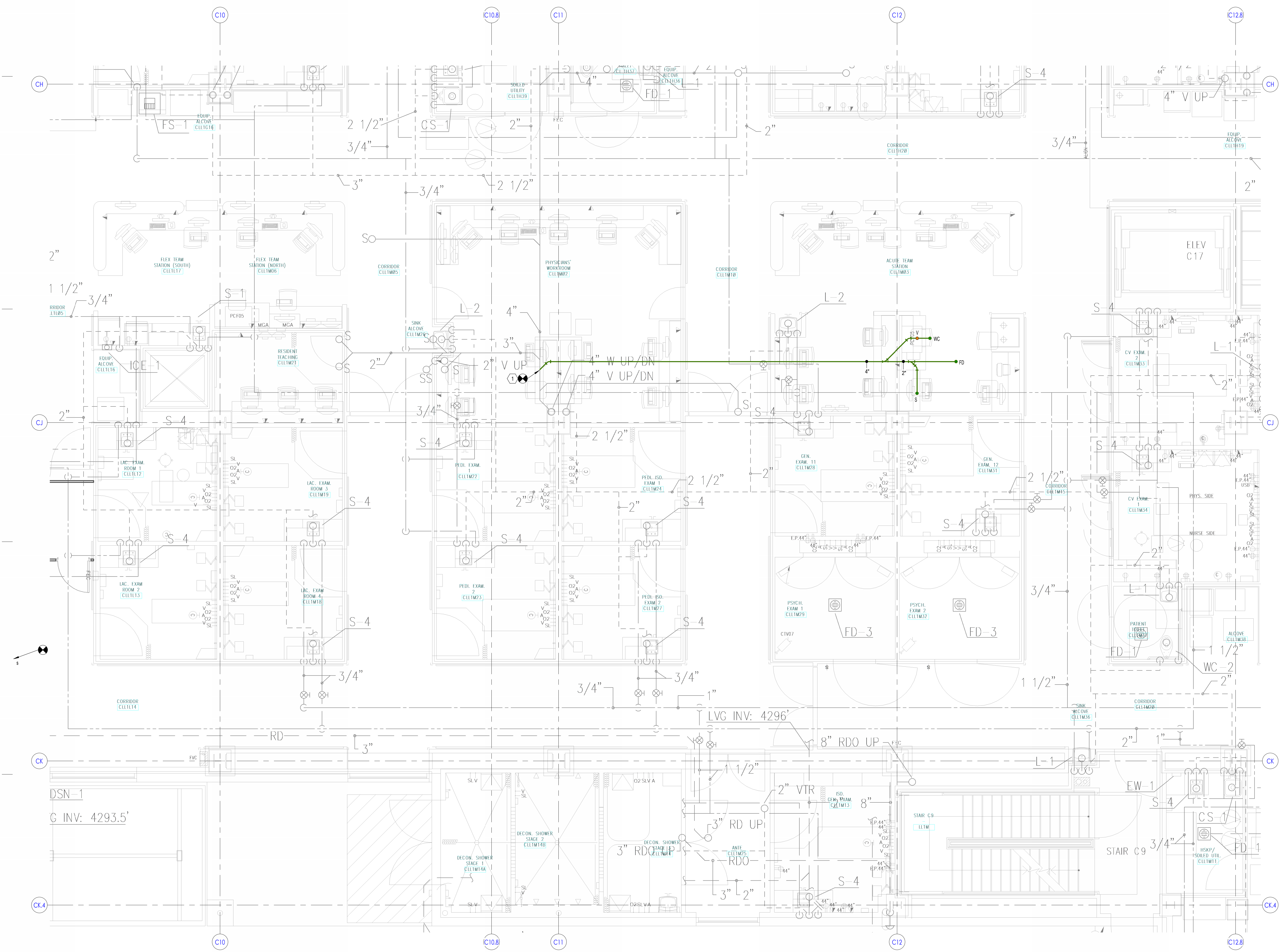
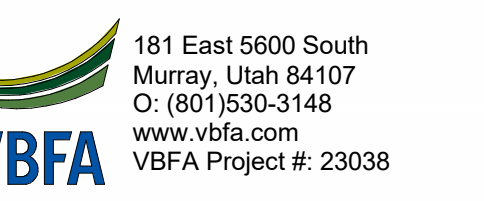
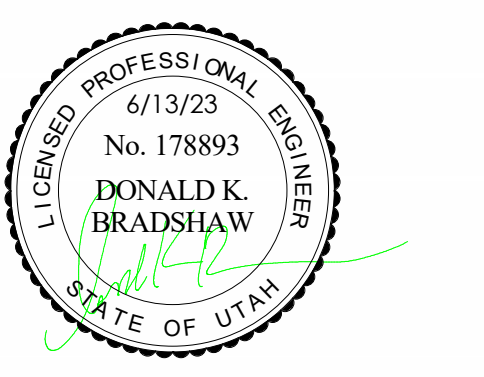
6/13/2023 4:05:28 PM



KEYNOTES	
1	CONNECT INTO EXISTING WASTE LINE



NJRA Architects, Inc.  
5272 S. College Drive, Suite 104  
Murray, Utah 84123  
801.364.9259  
www.njraarchitects.com



KEY PLAN

Intermountain Health  
Intermountain Medical Center  
Angio Lab #3 Remodel Project

5121 South Cottonwood Street  
Murray, UT 84107

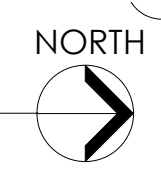
NJRA Project # 22247.00  
Construction Documents June 13, 2023

UNDERFLOOR  
PLUMBING  
PLAN

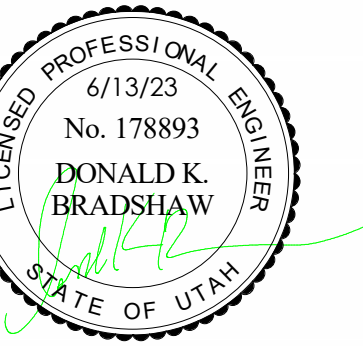
P100B

6/13/2023 4:05:40 PM

1 LEVEL 1 PLUMBING PLAN  
P100B 1/4" = 1'-0"

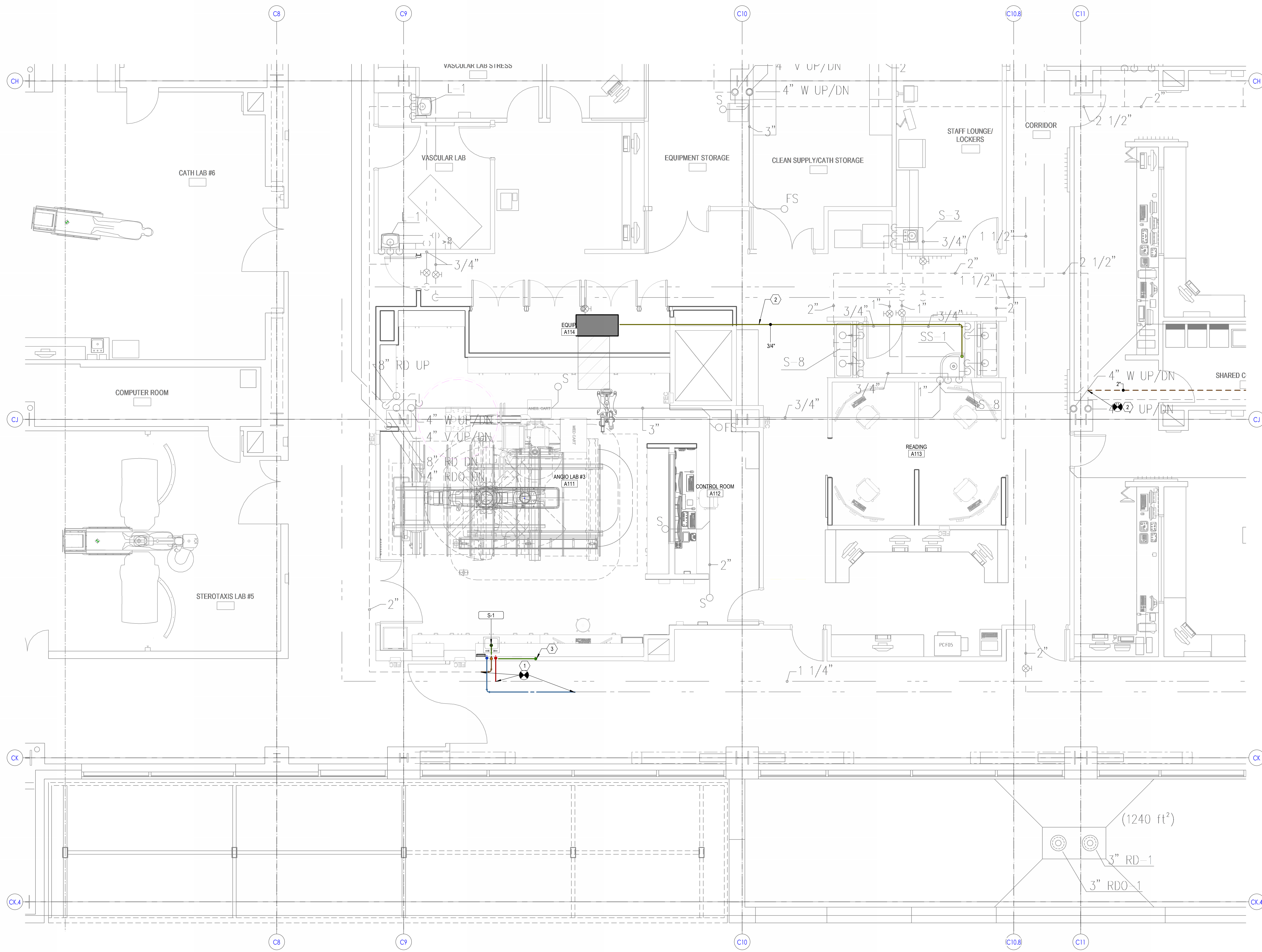






**KEYNOTES**

- CONNECT INTO EXISTING DOMESTIC HOT AND COLD WATER LINES. CONNECT INTO EXISTING VENT LINE
- RUN NEW CONDENSATE LINE OVER AND DROP INTO EXISTING JANITORS SINK
- DROP WASTE LINE DOWN THROUGH THE WALL AND CONNECT INTO THE EXISTING WASTE LINE



**KEY PLAN**

Intermountain Health  
**Intermountain Medical Center**  
**Angio Lab #3 Remodel Project**

5121 South Cottonwood Street  
Murray, UT 84107

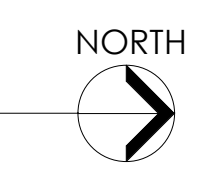
NJRA Project # 22247.00  
Construction Documents June 13, 2023

**LEVEL 1**  
**PLUMBING**  
**PLAN - AREA A**

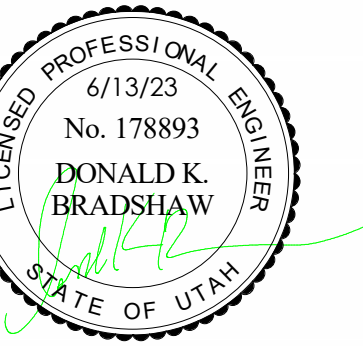
**P101A**

6/13/2023 4:05:57 PM

1 LEVEL 2 PLUMBING PLAN  
P101A 1/4" = 1'-0"

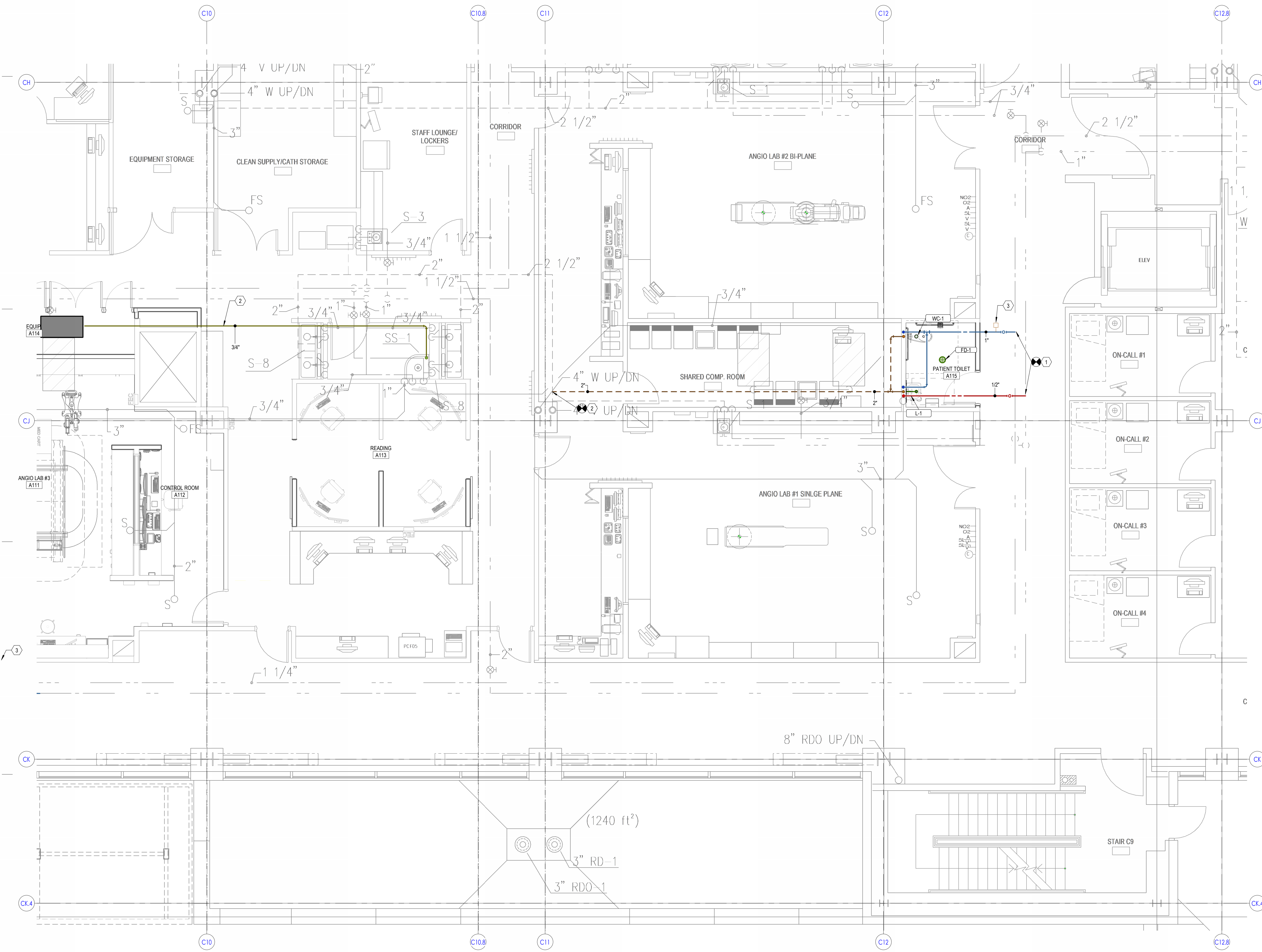






**KEYNOTES**

- CONNECT INTO EXISTING DOMESTIC HOT AND COLD WATER LINES. CONNECT INTO EXISTING VENT LINE
- CONNECT INTO EXISTING VENT LINE
- INSTALL WATER HAMMER IN AN ACCESSIBLE LOCATION



**KEY PLAN**

Intermountain Health  
Intermountain Medical Center  
Angio Lab #3 Remodel Project

5121 South Cottonwood Street  
Murray, UT 84107

NJRA Project # 22247.00  
Construction Documents June 13, 2023

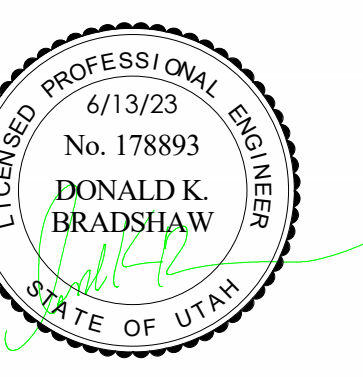
LEVEL 1  
PLUMBING  
PLAN - AREA B

**P101B**

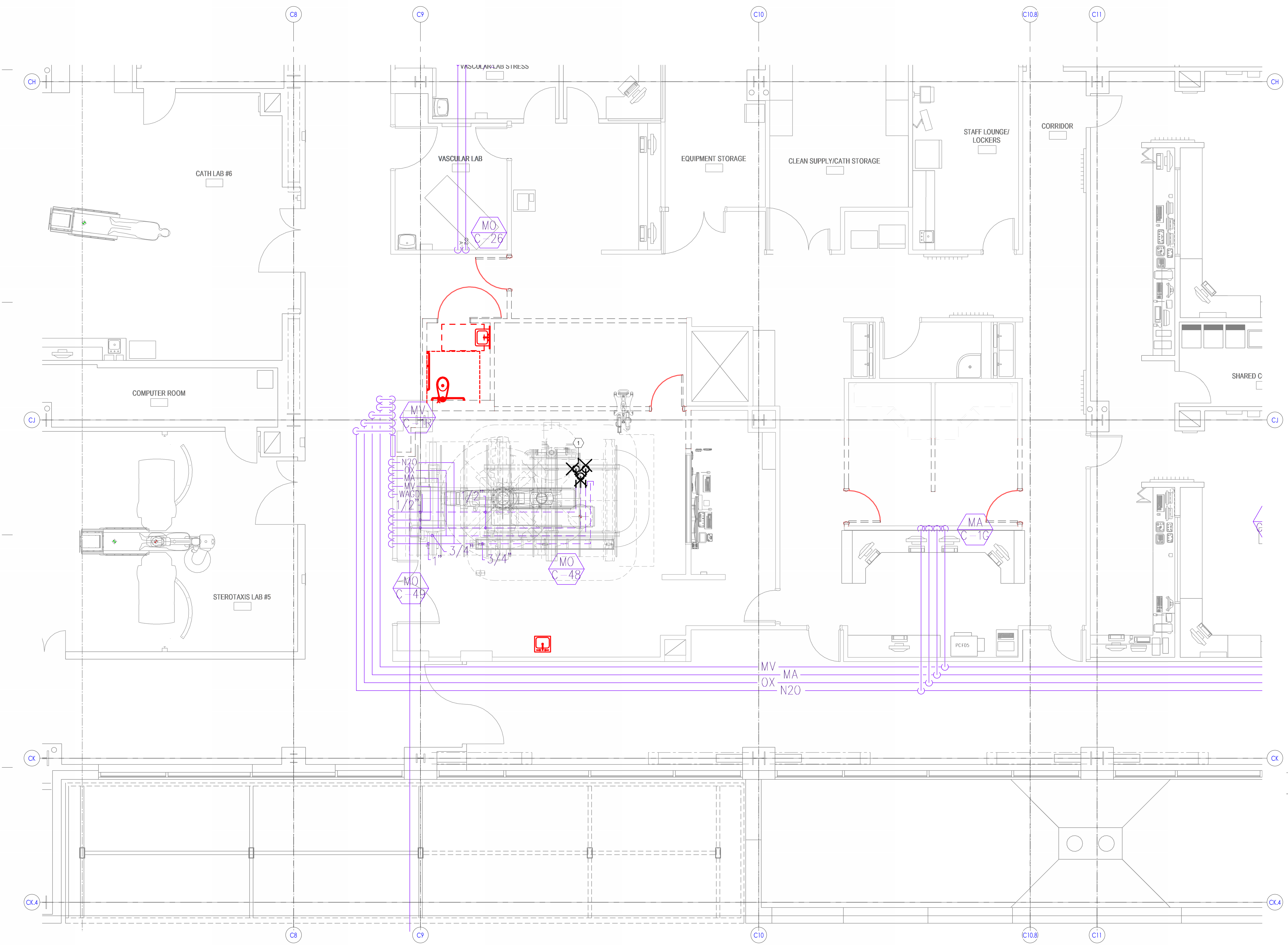
6/13/2023 4:06:14 PM

1 LEVEL 2 PLUMBING PLAN  
P101B 1/4" = 1'-0"





**KEYNOTES**  
1 DEMOLISH MED GAS PIPING SHOWN CROSSED OUT IN CEILING SPACE OF LEVEL BELOW, AS NEEDED, FOR REMOVAL OF MED GAS FEDESTAL ON LEVEL ABOVE. FIELD COORDINATE. PIPING NOT CROSSED OUT SHALL REMAIN FOR EXTENSION TO NEW PEDESTAL LOCATION.



**KEY PLAN**

Intermountain Health  
Intermountain Medical Center  
Angio Lab #3 Remodel Project

5121 South Cottonwood Street  
Murray, UT 84107

NJRA Project # 22247.00  
Construction Documents June 13, 2023

LEVEL 1  
MEDICAL GAS  
DEMOLITION  
PLAN - AREA A

**MGD101A**

6/13/2023 4:06:42 PM

1 LEVEL 2 PLUMBING DEMOLITION PLAN  
MGD101A 1/4" = 1'-0"

