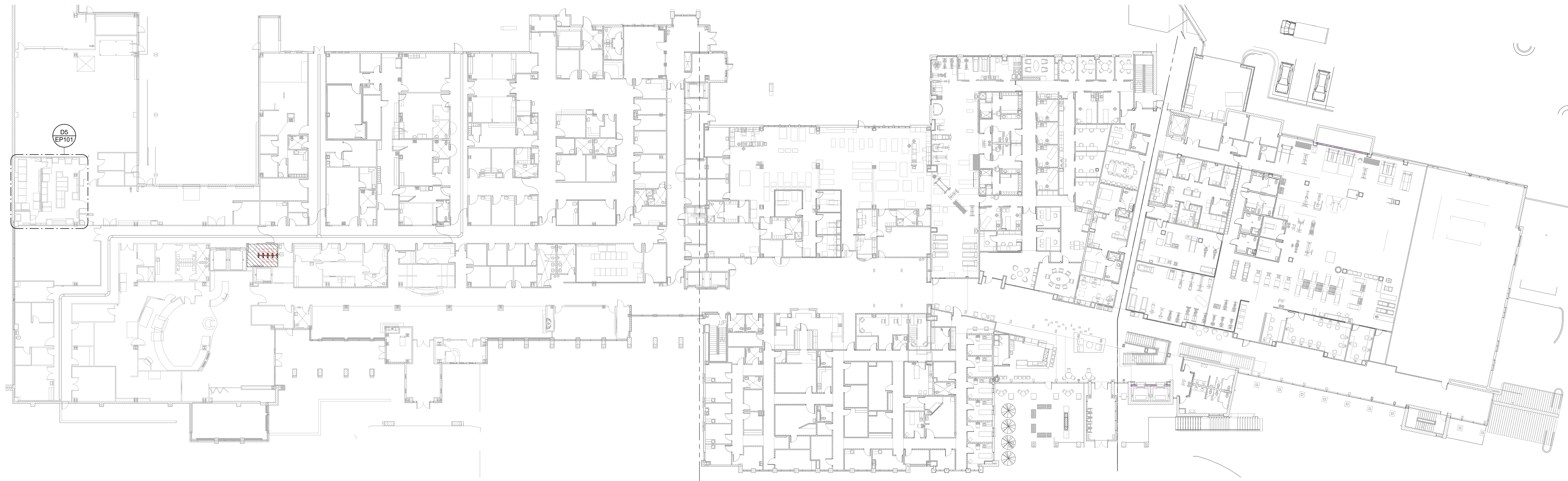
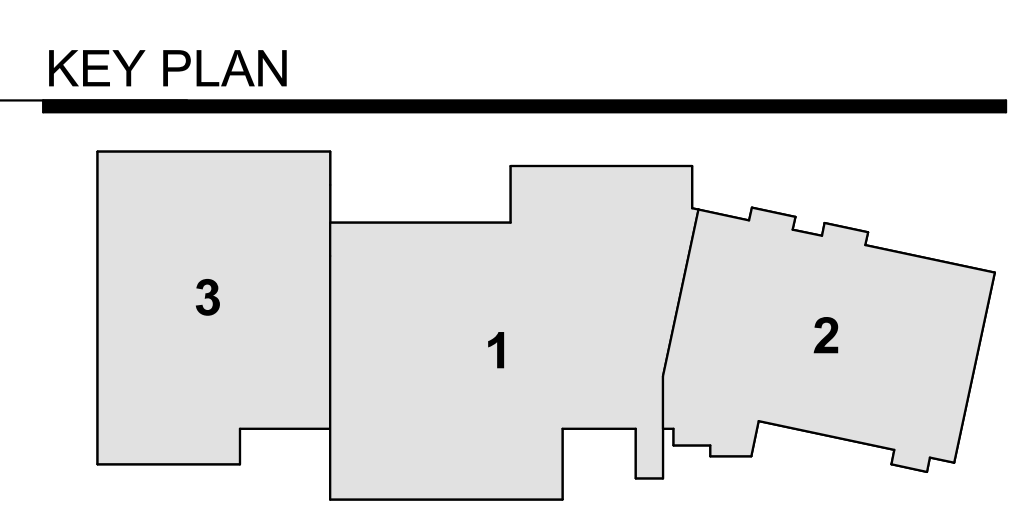


D5 ENLARGED EXISTING ELECTRICAL ROOM
SCALE: 1/4" = 1'-0"



A1 FIRST FLOOR - OVERALL POWER PLAN
SCALE: 3/64" = 1'-0"



REV	DATE	DESCRIPTION
-----	------	-------------

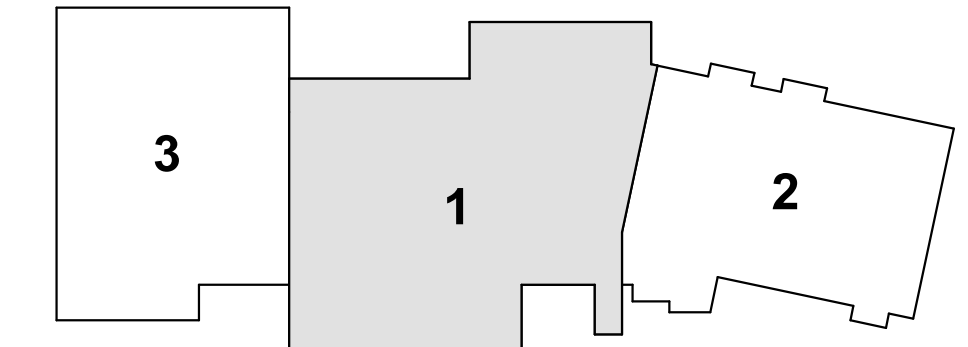


A1 FIRST FLOOR - POWER PLAN
SCALE: 1/4" = 1'-0"

GENERAL SHEET NOTES

○ SHEET KEYNOTES

KEY PLAN



VCBO

SALT LAKE CITY - HQ
524 SOUTH 600 EAST
SALT LAKE CITY, UT 84102
801.575.8800
ST. GEORGE
20 N. MAIN ST. #103
ST. GEORGE, UT 84770
435.522.7070
VCBO.COM
VCBO NUMBER: 22545
CLIENT NUMBER:
DATE: 12-08-2023



REV	DATE	DESCRIPTION

**INTERMOUNTAIN PARK CITY HOSPITAL
CT / FLUOROSCOPY REMODEL**
900 ROUND VALLEY DR, PARK CITY, UT 84080
CONSTRUCTION DOCUMENTS

FIRST FLOOR - POWER PLAN

EP101-1

SHEET KEYNOTES

1 COORDINATE FINAL TERMINATION LOCATION WITH OWNER PRIOR TO INSTALLATION.

VCBO

SALT LAKE CITY - HQ
524 SOUTH 600 EAST
SALT LAKE CITY, UT 84102
801.575.8800

ST. GEORGE
20 N. MAIN ST. #103
ST. GEORGE, UT 84770
435.522.7070

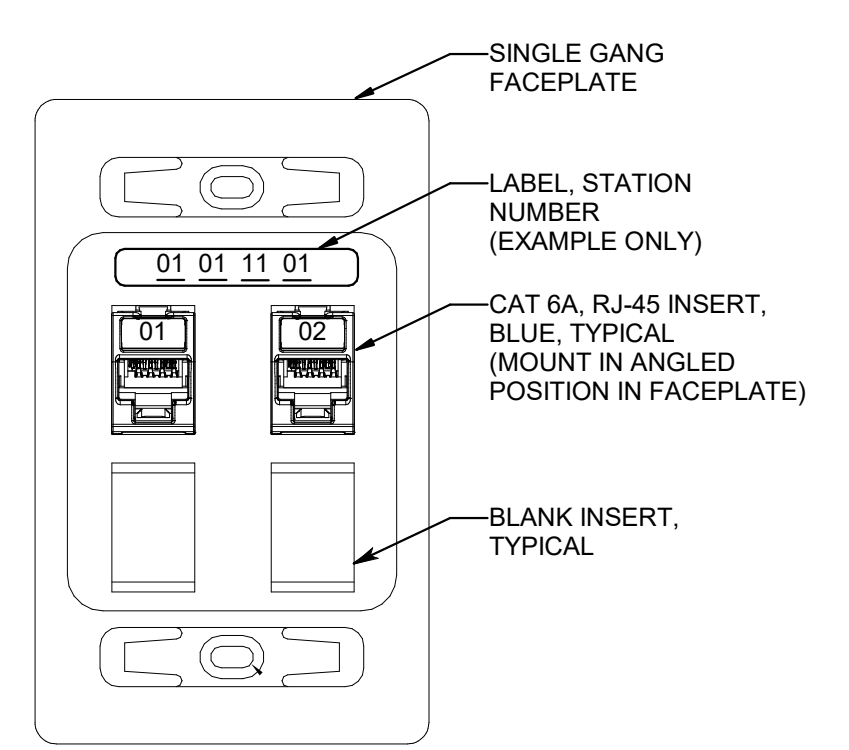
VCBO.COM

VCBO NUMBER: 22545
CLIENT NUMBER: -
DATE: 12-08-2023

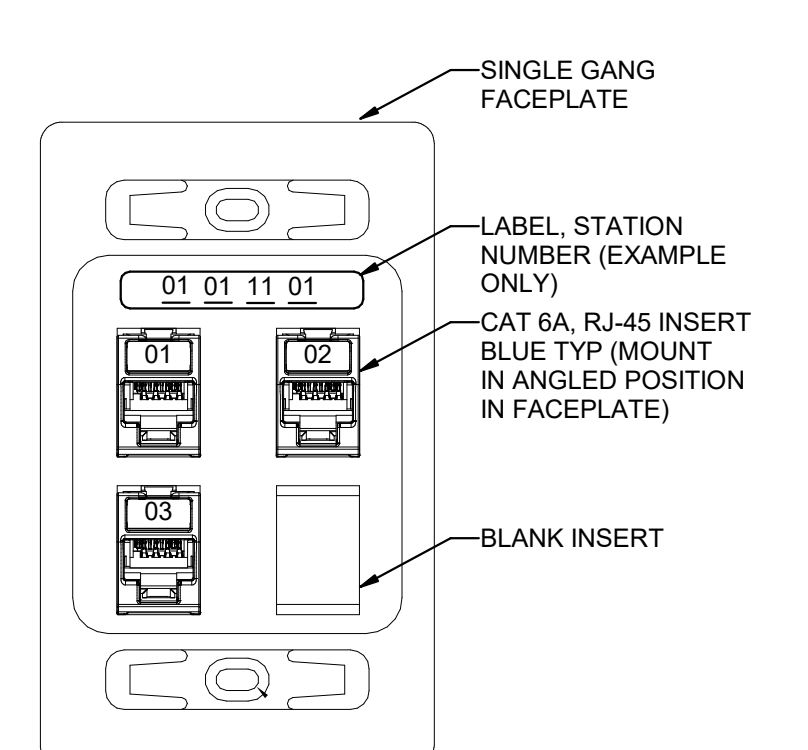
No. 185978
PETER E. JOHANSEN
12/08/23

DATA DEVICE DROP SCHEDULE - COMM 1303

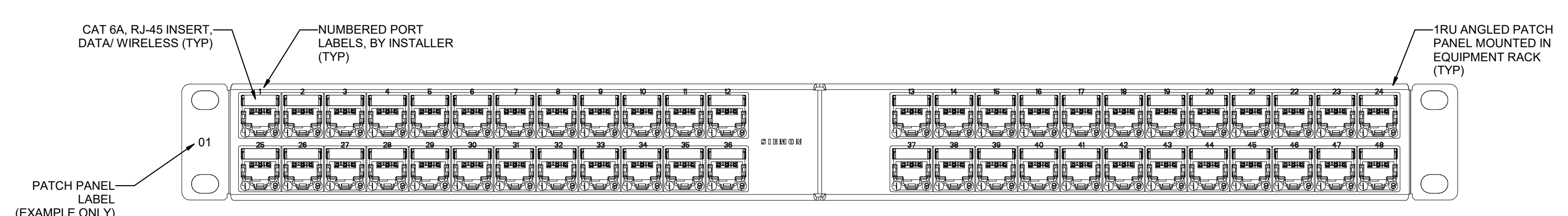
DDD	DETAIL LOCATION	COMM ROOM LOCATION	TOTAL BY FLOOR	Num of Drops
FIRST FLOOR				
WALL DATA (2-DROP)	SEE DETAIL B1/EPS51	COMM 1303	7	14
WALL DATA (3-DROP)	SEE DETAIL B3/EPS51	COMM 1303	1	3
WALL DATA - ABOVE COUNTER (2-DROP)	SEE DETAIL B1/EPS51	COMM 1303	1	2
Grand total			9	19



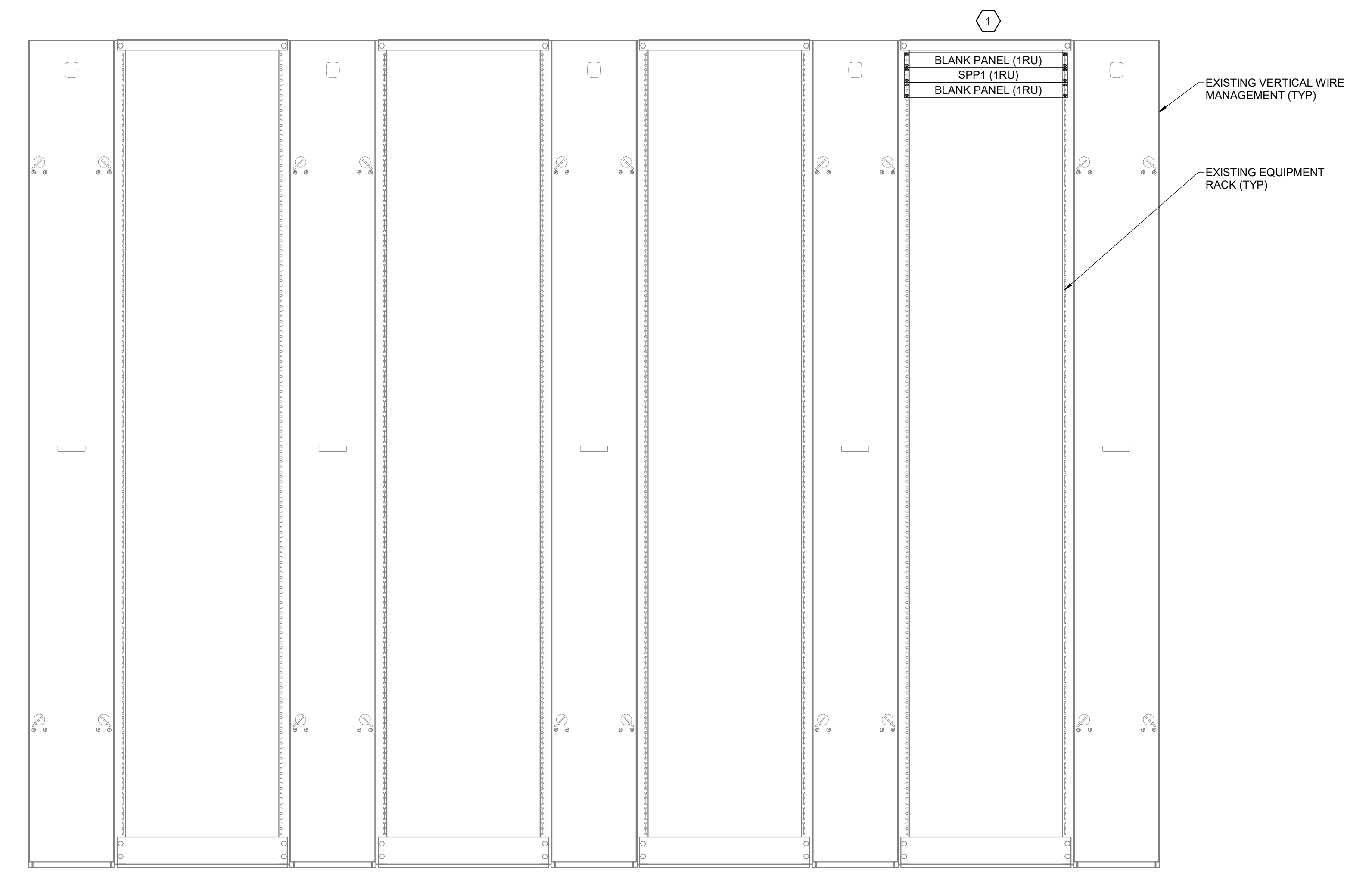
B1 TYPICAL 2-PORT WALL DATA OUTLET
SCALE: NTS



B3 TYPICAL 3-PORT WALL DATA OUTLET
SCALE: NTS



A1 STATION PATCH PANEL, SPP1, SIEMON, ANGLED
SCALE: NTS



A4 COMM 1303 EQUIPMENT RACK ELEVATION
SCALE: NTS

INTERMOUNTAIN PARK CITY HOSPITAL
CT / FLUOROSCOPY REMODEL
900 ROUND VALLEY DR, PARK CITY, UT 84080
CONSTRUCTION DOCUMENTS

SHEET KEYNOTES

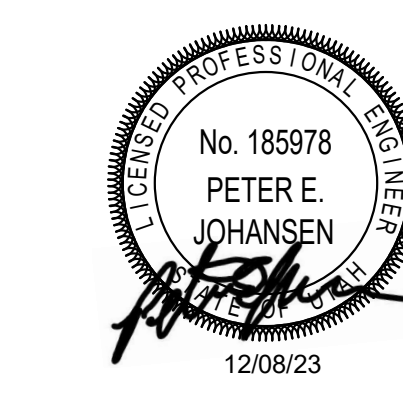
- PROVIDE GE MDP E4502BB SHUNT TRIP DISCONNECT RECESSED PANEL.
- PROVIDE 10GR BETWEEN MDP AND PDU.
- GROUNDING CONDUCTOR IS THE SAME SIZE AS CURRENT CARRYING CONDUCTOR.

VCBO

SALT LAKE CITY - HQ
524 SOUTH 600 EAST
SALT LAKE CITY, UT 84102
801.575.8800

ST. GEORGE
20 N. MAIN ST. #103
ST. GEORGE, UT 84770
435.522.7070

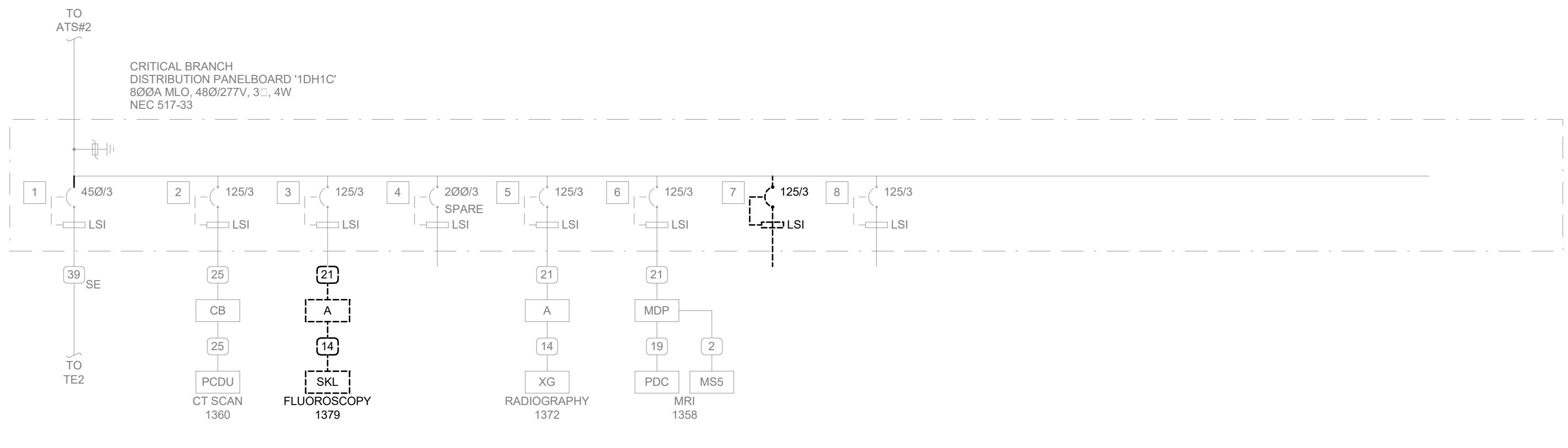
VCBO NUMBER: 22545
CLIENT NUMBER:
DATE: 12-08-2023



COPPER CONDUCTOR AND CONDUIT SCHEDULE

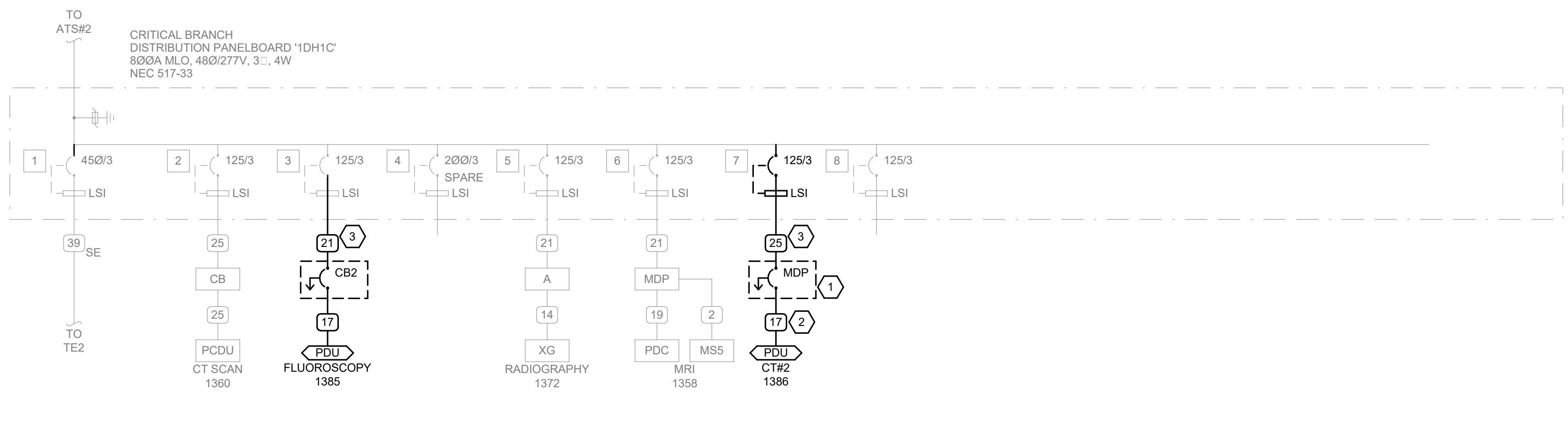
SYM	AMP	HH	CONDUIT	CONDUCTOR (NOTE 1)		IG	IG/HH	SE	NOTES
				SIZE	QTY				
(1)	20	-	75	2	12	12	12	8	2
(2)	20	-	75	3	12	12	12	8	2,3
(3)	20	24	75	4	12	12	12	8	2,3
(4)	30	-	75	2	10	10	10	8	2
(5)	30	-	75	3	10	10	10	8	2
(6)	30	32	75	4	10	10	10	8	2
(7)	40	-	1	2	8	10	8	6	2
(8)	40	-	1	3	8	10	8	6	2
(9)	40	44	1	4	8	10	8	6	2
(10)	55	-	1	2	6	10	8	4	2
(11)	55	-	1	3	6	10	8	4	2
(12)	55	60	1.25	4	6	10	8	4	2
(13)	70	-	1	2	4	8	4	2	2
(14)	70	-	1.25	3	4	8	4	2	2
(15)	70	76	1.25	4	4	8	4	2	2
(16)	85	-	1.25	2	3	8	3	2	2
(17)	85	-	1.25	3	3	8	3	2	2
(18)	85	92	1.25	4	3	8	3	2	2
(19)	95	-	1.25	3	2	8	2	2	2
(20)	95	104	1.50	4	2	8	2	2	2
(21)	130	-	1.50	3	1	6	2	2	2
(22)	130	116	1.50	4	1	6	2	2	2
(23)	150	-	2	3	10	6	2	10	2
(24)	150	136	2	4	10	6	2	10	2
(25)	175	-	2	3	20	6	2	20	2
(26)	175	156	2	4	20	6	2	20	2
(27)	200	-	2	3	30	6	2	20	2
(28)	200	180	2.50	4	30	6	2	20	2
(29)	230	-	2.50	3	40	4	2	20	2
(30)	230	208	2.50	4	40	4	2	20	2
(31)	255	-	2.50	3	250	4	1	20	2
(32)	255	232	2.50	4	250	4	1	20	2
(33)	310	-	3	3	350	3	10	30	2
(34)	310	280	3	4	350	3	10	30	2
(35)	380	-	3.50	3	500	3	30	30	2
(36)	380	344	4	4	500	3	30	30	2
(37)	400	-	2 EA 2	3	30	3	30	30	2
(38)	400	360	2 EA 2.50	4	30	3	30	30	2
(39)	510	-	3 EA 2.50	3	250	1	40	30	2
(40)	510	464	2 EA 3	4	250	1	40	30	2
(41)	620	-	2 EA 3	3	350	10	40	30	2,4
(42)	620	560	2 EA 3	4	350	10	40	30	2,4
(43)	760	-	2 EA 3.50	3	500	10	40	30	2,4
(44)	760	688	2 EA 4	4	500	10	40	30	2,4
(45)	855	-	3 EA 3	3	300	20	40	30	2,4
(46)	855	768	3 EA 3	4	300	20	40	30	2,4
(47)	1000	-	3 EA 3.50	3	400	20	40	30	4
(48)	1000	912	3 EA 3.50	4	400	20	40	30	4
(49)	1140	-	3 EA 4	3	500	30	40	30	4
(50)	1140	1032	3 EA 4	4	500	30	40	30	4
(51)	1240	-	4 EA 3	3	350	30	40	30	4
(52)	1240	1120	4 EA 3	4	350	30	40	30	4
(53)	1675	1520	5 EA 4	4	400	40	40	40	4
(54)	2010	1824	6 EA 4	4	400	250	250	250	4
(55)	2660	2408	7 EA 4	4	500	350	350	350	4
(56)	3040	2752	8 EA 4	4	500	500	500	500	4
(57)	4180	3784	11 EA 4	4	500	500	500	500	4
(58)	-	-	5 EA 4	-	-	-	-	-	6
(59)	-	-	5	-	-	-	-	-	6
(60)	-	-	10 EA 4	-	-	-	-	-	6

- CONDUCTOR AND CONDUIT SCHEDULE NOTES
- CONDUCTORS SHOWN ARE SHOWN FOR EACH CONDUIT WITH MODIFICATIONS AS NOTED IN NOTE 5. ALL CONDUCTORS SHOWN ARE THWN UNLESS OTHERWISE NOTED.
 - PROVIDE EQUIPMENT GROUND CONDUCTORS PER TABLE 250-122 WHEN CIRCUIT BREAKERS ARE SIZED GREATER THAN AMPERE RATING SHOWN IN TABLE.
 - PROVIDE #10 NEUTRALS FOR MULTI-WIRE BRANCH CIRCUITS SERVING COMPUTERS.
 - GROUND (IG) CONDUCTOR MAY BE DELETED ON SERVICE ENTRANCE CONDUCTORS.
 - SYMBOL SUBSCRIPTS:
 - "2N": INCLUDE TWO NEUTRAL CONDUCTORS SIZED AS SCHEDULED FOR PHASE AND NEUTRAL CONDUCTORS WHERE THE CONDUCTOR IS #10 OR LARGER. INCLUDE A SINGLE 200% RATED CONDUCTOR THAT IS TWICE THE AMPACITY OF THE SCHEDULED PHASE AND NEUTRAL CONDUCTOR WHERE THE CONDUCTOR IS BELOW #10 IN SIZE.
 - "CI": PROVIDE CIRCUIT INTEGRITY CABLE. TYPE TWO-HOUR FIRE RESISTIVE CABLES IN CONDUIT OR PROVIDE FEEDER ENCASED IN CONCRETE.
 - "FG": FULL SIZE GROUND. SIZE EQUIPMENT GROUNDING CONDUCTOR TO BE SAME SIZE AS THE PHASE CONDUCTORS.
 - "HH": NEUTRAL CURRENTS EXIST DUE TO HIGH HARMONIC "NON-LINEAR" LOADS. CURRENT CARRYING CONDUCTORS DERATED ACCORDINGLY. PROVIDE THE IG/HH SIZE FOR THE EQUIPMENT GROUNDING CONDUCTOR.
 - "IG": INCLUDE IG (INSULATED/ISOLATED GROUND CONDUCTOR) SCHEDULED ALONG WITH THE GROUND OF EQUIPMENT GROUND CONDUCTOR.
 - "MC": PROVIDE FEEDER IN METAL-CLAD CABLE. TYPE MC IN PLACE OF SINGLE CONDUCTORS IN CONDUIT.
 - "SE": SUBSTITUTE "SE" CONDUCTOR FOR "CI" CONDUCTOR SHOWN, WHICH IS SIZED FOR THE GROUNDING OF THE SECONDARY OF THE SEPARATELY DERIVED SYSTEM.
 - "SER": PROVIDE SERVICE-ENTRANCE CABLE. TYPE SE OR SER IN PLACE OF SINGLE CONDUCTORS IN CONDUIT.
 - RACEWAY ONLY. CONDUCTORS PROVIDED BY UTILITY.



B1 DEMOLITION ONE LINE DIAGRAM

SCALE:



A1 NEW ONE LINE DIAGRAM

SCALE:

INTERMOUNTAIN PARK CITY HOSPITAL
CT / FLUOROSCOPY REMODEL
900 ROUND VALLEY DR., PARK CITY, UT 84000
CONSTRUCTION DOCUMENTS

ONE-LINE DIAGRAMS

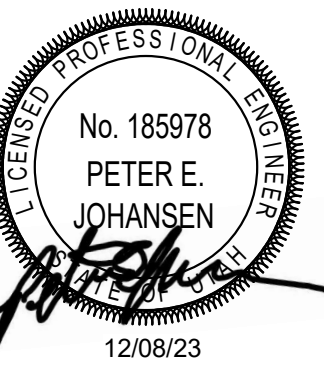
EP601

GENERAL SHEET NOTES

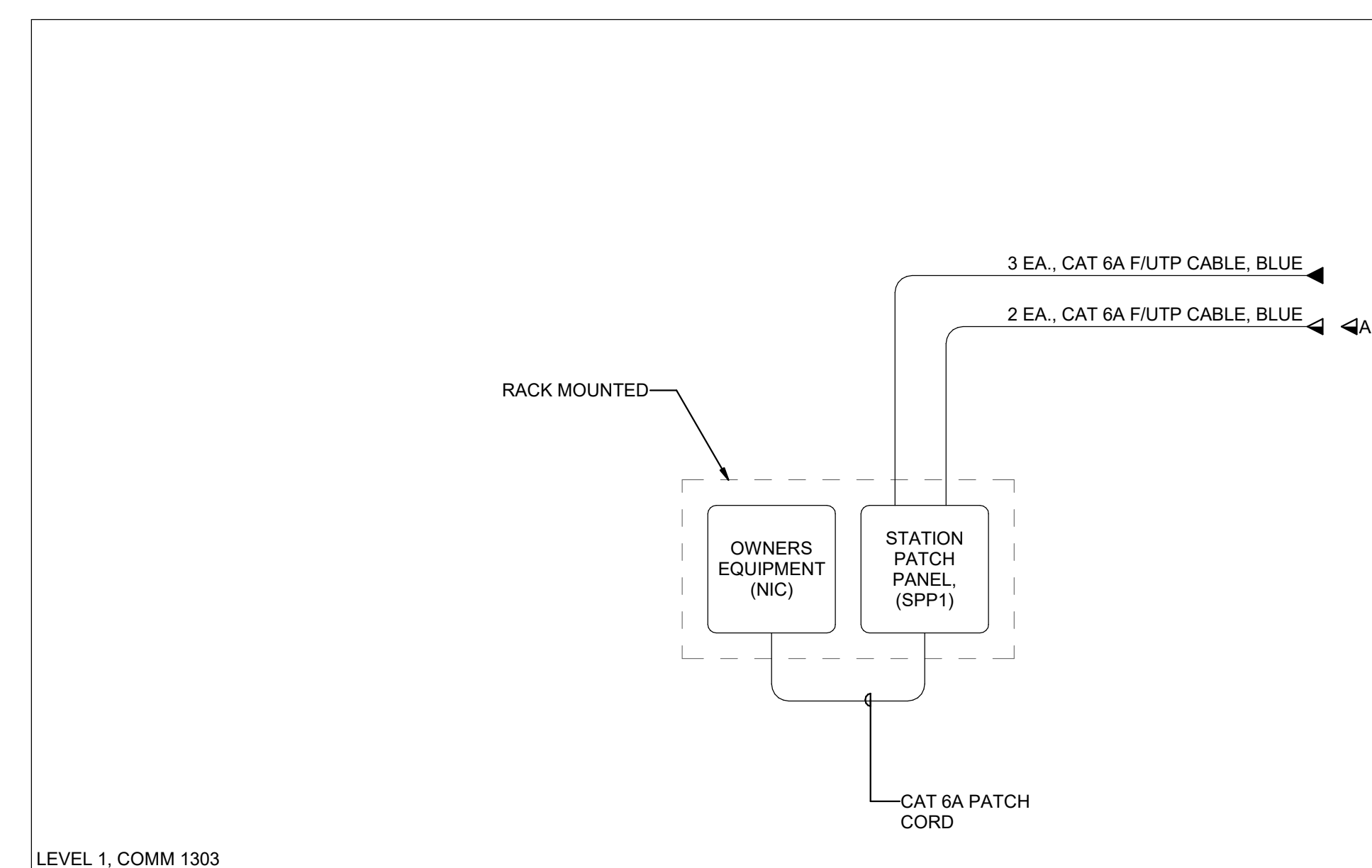
SHEET KEYNOTES

VCBO

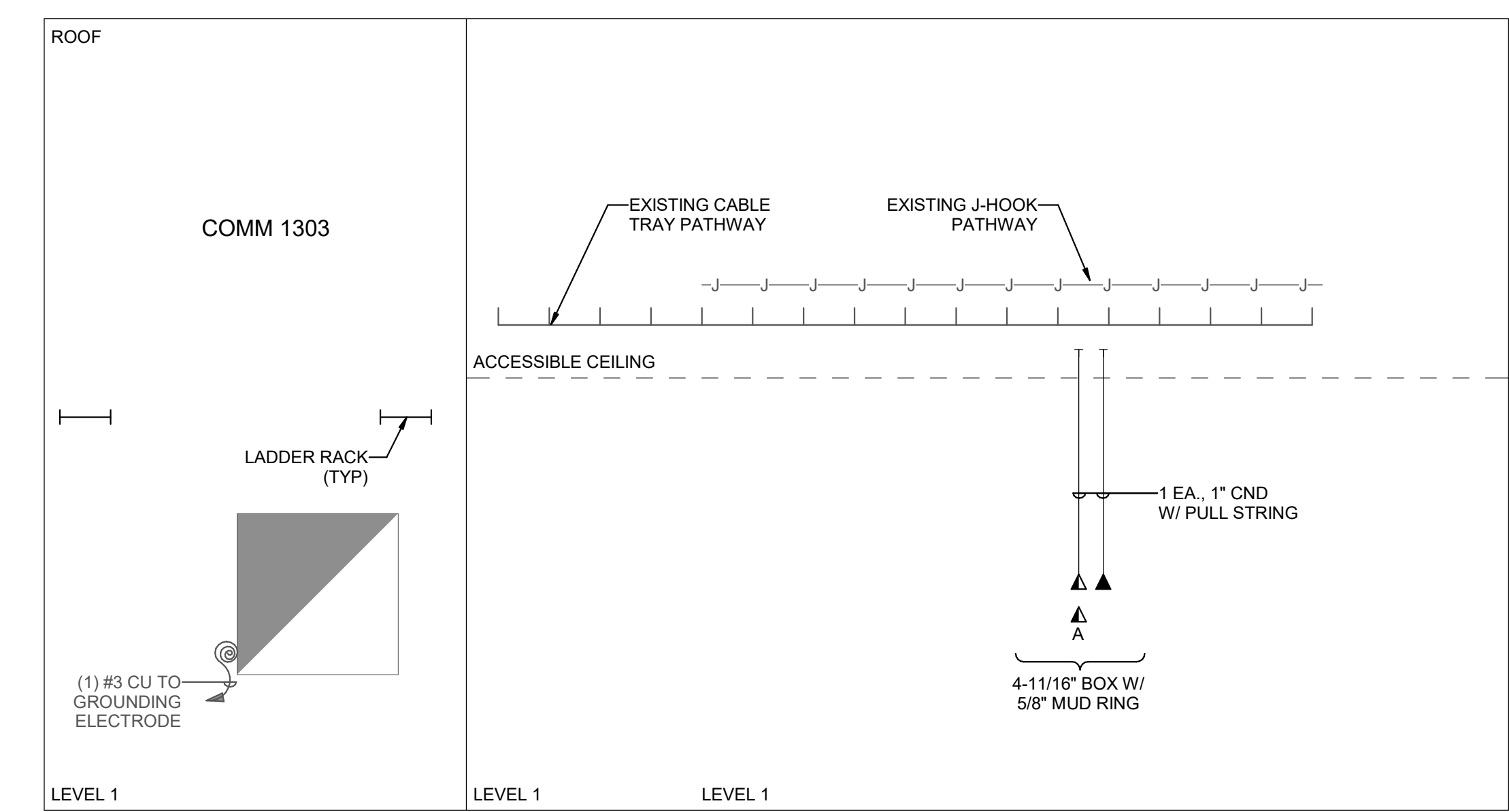
SALT LAKE CITY - HQ
 524 SOUTH 600 EAST
 SALT LAKE CITY, UT 84102
 801.575.8800
 ST. GEORGE
 20 N. MAIN ST. #103
 ST. GEORGE, UT 84770
 435.522.7070
 VCBO.COM
 VCBO NUMBER: 22545
 CLIENT NUMBER: -
 DATE: 12-08-2023



REV	DATE	DESCRIPTION
-----	------	-------------



A2 TELECOM CABLE RISER DIAGRAM
 SCALE: NTS



A4 TELECOM CONDUIT RISER DIAGRAM
 SCALE: NTS

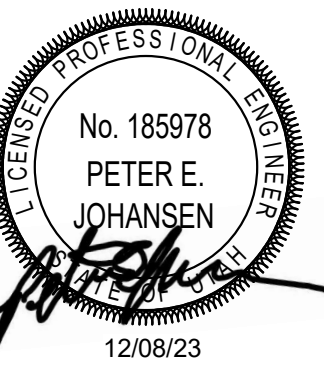
**INTERMOUNTAIN PARK CITY HOSPITAL
 CT / FLUOROSCOPY REMODEL**
 900 ROUND VALLEY DR, PARK CITY, UT 84080

CONSTRUCTION DOCUMENTS

TELECOM RISER DIAGRAMS

EP651

12/14/2023 12:56:01 PM



GENERAL SHEET NOTES

SHEET KEYNOTES

1 CIRCUIT TO 277 VOLT CRITICAL BRANCH CIRCUIT FEEDING CONTROL ROOM LIGHTS.

REV DATE DESCRIPTION

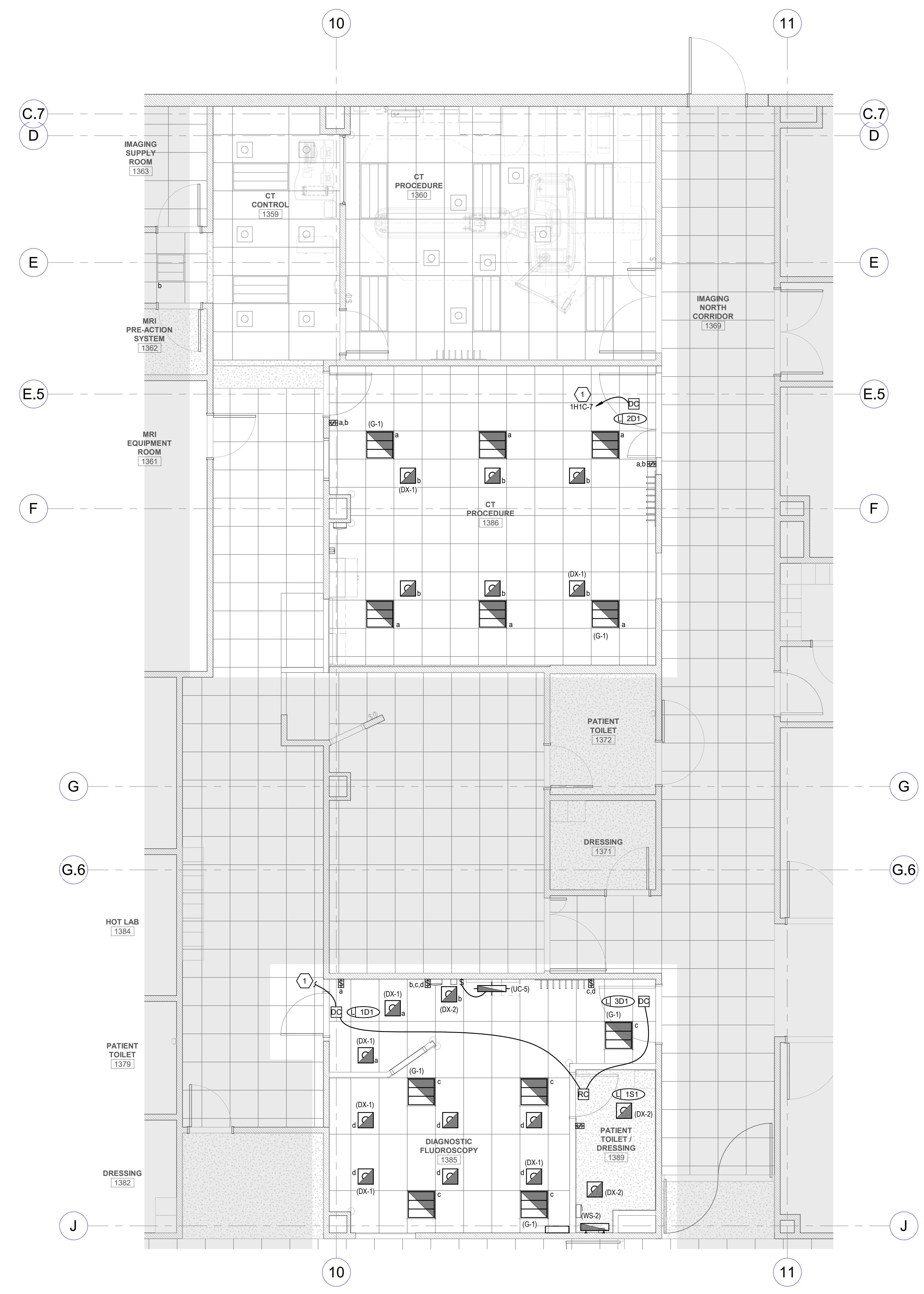
INTERMOUNTAIN PARK CITY HOSPITAL CT / FLUOROSCOPY REMODEL

900 ROUND VALLEY DR, PARK CITY, UT 84080

CONSTRUCTION DOCUMENTS

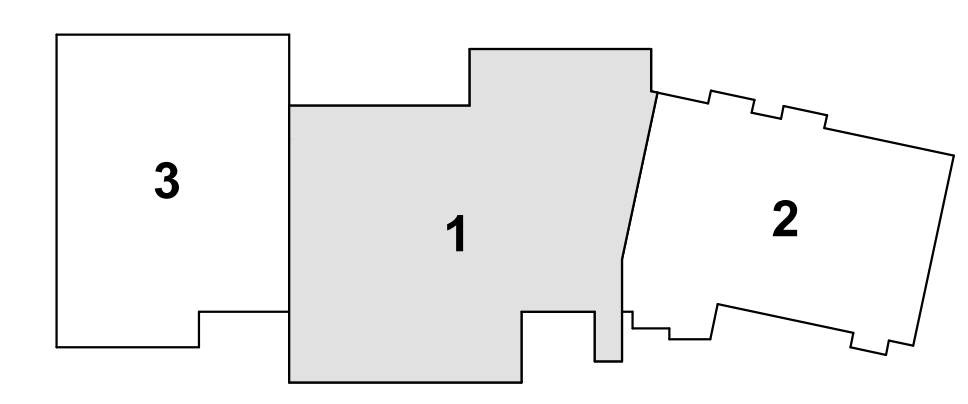
FIRST FLOOR - LIGHTING PLAN

EL101



A3 FIRST FLOOR - LIGHTING PLAN
SCALE: 1/4" = 1'-0"

KEY PLAN

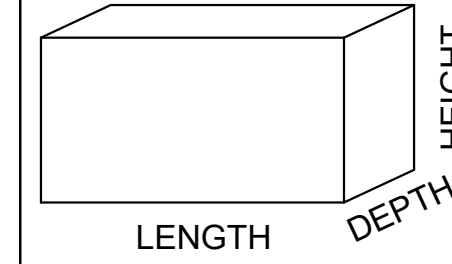
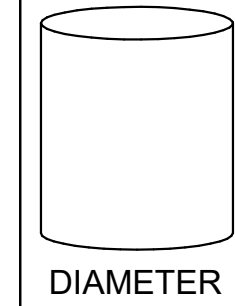


INTERIOR LIGHTING FIXTURE SCHEDULE

ABBREVIATIONS

MOUNTING

B - BASE
C - CEILING
F - FLANGE
G - GRID
P - PENDANT
PS - POLE
R - RECESSED
S - SURFACE
W - WALL



LUMINAIRE OPTIONS

ARHR - AIR RETURN AND HEAT REJECTION
DL - DAMP LOCATION
EQC - EARTHQUAKE CLIPS
F - FUSING
HLD - HINGED AND LATCHED DOOR
HS - HOUSE SIDE SHIELD
PS - PHOTOCELL SWITCH
QRS - QUARTZ RESTRIKE
ST - STATIC
WG - WIRE GUARD
WL - WET LOCATION

FINISH

MW - MATTE WHITE
BL - BLACK
SL - SILVER
GL - GOLD
CL - CLEAR
PW - PAINTED WHITE
EA - EXTRUDED ALUMINUM
S - STEEL
GS - GALVANIZED STEEL
C - CAST
CBA - COLOR BY ARCHITECT
SCBA - STANDARD COLOR BY ARCHITECT
CCA - CUSTOM COLOR BY ARCHITECT
FS - MEETS FEDERAL STANDARD 2000
TP - THERMALLY PROTECTED
FL - FLUSH
R - REGRESS
M - MITERED

DIFFUSER/LENS

BA - ACRYLIC #THICK
ACA - ACRYLIC #THICK (OPAL)
GC - GLASS (CLEAR)
GO - GLASS (OPAL)
GF - GLASS (FROSTED)
SGL - SOFT GLOW LENS
HPL - HIGH PERFORMANCE LENS
DO - DROP OPAL
CGL - CONVEX GLASS LENS
S - SATIN LENS

NOTES

REFLECTOR

OP - NONE/OPEN
SP - SPECULAR
SS - SEMI-SPECULAR
D - DIFFUSE (WHITE ENAMEL)
SC - SPECULAR (COLORED)
PR - PRISMATIC
FDR - FULL DEPTH REFLECTOR
DS - DIFFUSE (SEM SPECULAR) SILVER
LI - LOW IRIDESCENT
IR - IRIDESCENT
SL - SILVER
GL - GOLD
CA - CLEAR ALZAK

GENERAL NOTES

- PROVIDE UNIT PRICES AND FIXTURE BRAND SELECTED FOR ADD/DELETE CHANGES FOR EACH FIXTURE TYPES SHOWN WITHIN 48 BUSINESS HOURS OF THE BID DATE. FAILURE TO COMPLY WITH THIS REQUIREMENT MAY DISQUALIFY THE PRODUCTS AND EMPOWER THE ENGINEER TO DETERMINE FAIR VALUE FOR FIXTURE AND INSTALLATION CHANGES, WITHOUT FURTHER INPUT FROM THE CONTRACTOR OR INSTALLER.
- CONTRACTOR ALLOWANCE PRICES ARE ACCURATE WHEN THIS JOB WAS SPECIFIED. CONTRACTOR AND ELECTRICAL DISTRIBUTOR SHALL VERIFY THIS ALLOWANCE AND REPORT ANY PROBLEMS TO THE ENGINEER BEFORE THE BID. ALLOWANCE PRICE MAY OR MAY NOT INCLUDE LAMP(S) OR FREIGHT AS NOTED, AND DO NOT INCLUDE ANY TAXES.
- SUBSTITUTIONS AND/OR EQUAL FIXTURES MUST RECEIVE APPROVAL PRIOR TO BIDDING, THEY MUST BE SUBMITTED TO THE ENGINEER NO LESS THAN 2 WEEKS PRIOR TO BID OPENING.
- SAMPLES MUST BE PROVIDED FOR ANY AND ALL FIXTURES UPON A/E REQUEST PRIOR TO RELEASING FIXTURES.
- ALL FIXTURES SHALL BE LISTED AND APPROVED FOR THEIR INTENDED USE AND LOCATION.
- VERIFY THE PROPER MOUNTING KITS OR ACCESSORIES TO FACILITATE INSTALLATION AS SHOWN AT EACH LOCATION ON THE DRAWINGS.
- COMPLY WITH THE "INTERIOR LIGHTING" SECTION OF THE SPECIFICATIONS.
- REFER TO SPECIFICATIONS FOR IMPORTANT TECHNICAL REQUIREMENTS FOR LIGHTING FIXTURES, DRIVERS, AND LAMPS.
- ALL LIGHT FIXTURES TO BE EITHER "DLC" OR "LIGHTING FACTS" LISTED OR TO BE APPROVED BY ARCHITECT/ENGINEER AND OWNER.

ID	DESCRIPTION	NOMINAL SIZE				MOUNTING	TYPE	COLOR TEMP	CRI	DIMMER CONFIGURATION	VOLTAGE	WATTS	FINISH	FIXTURE LUMENS	DIFFUSER/LENS	REFLECTOR	OPTIONS	NOTES	MANUFACTURER (CATALOG SERIES)			
		LENGTH	DEPTH	HEIGHT	DIAMETER/APERTURE														OPTION 1	OPTION 2	OPTION 3	
(DX-1)	6" ROUND, RECESSED LED DOWNLIGHT, SEMI-SPECULAR REFLECTOR, WHITE TRIM FINISH	-	-	-	0' - 6"	CR	LED	4000K	-	0-10V DIMMING (10%)	120/277	19	-	1500			-			EVOL-35/15-6AR-WD-LSS-MVO-LT-EZ10		
(DX-2)	6" ROUND, RECESSED LED DOWNLIGHT, SEMI-SPECULAR REFLECTOR, WHITE TRIM FINISH	-	-	-	0' - 6"	CR	LED	4000K	-	0-10V DIMMING (1%)	120/277	23	-	2000			-			EVOL-35/20-6AR-WD-LSS-MVO-LT-EZ10		
(G-1)	2' X 2' LED FLAT PANEL, GRID LAY-IN	2' - 0"	2' - 0"	-	-	CR	LED	4000K	-	0-10V DIMMING (10%)	120/277	40	-	3400			-			VIVIDLEDS (VVDES2240-35-UNV-WH-D1)		
(UC-5)		2' - 0"	0' - 4"	-	-		LED	4000K	-	ELV DIMMING	120/277	8	-	600			-			DAY-BRITE (LINCS100E-L28-935-UNV-WH-G-DIM)	KENALL (AUCLED-1-MW-11L35K-2-4-277)	
(WS-2)	2' LED VANITY LIGHT, SATIN CHROME FINISH, 2.25" WIDE	2' - 0"	0' - 2.25"	-	-	WS	LED	4000K	-	NO DIMMING	120/277	19	-	2000			-			EDGE LIGHT (TW12-S11-1RE-24"-35K-CH)	EUREKA (3541-24"G-LED-17.40-120-1277-SC-WH)	LBL (LW496-OP-XX-LED-277)

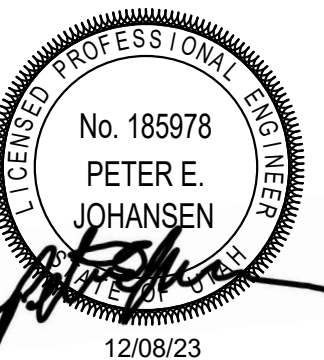
VCBO

SALT LAKE CITY - HQ
524 SOUTH 600 EAST
SALT LAKE CITY, UT 84102
801.575.8800

ST. GEORGE
20 N. MAIN ST. #103
ST. GEORGE, UT 84770
435.522.7070

VCBO.COM

VCBO NUMBER: 22545
CLIENT NUMBER: -
DATE: 12-08-2023



REV DATE DESCRIPTION

INTERMOUNTAIN PARK CITY HOSPITAL
CT / FLUOROSCOPY REMODEL
900 ROUND VALLEY DR, PARK CITY, UT 84080

CONSTRUCTION DOCUMENTS

INTERIOR LIGHTING
FIXTURE SCHEDULE

EL601

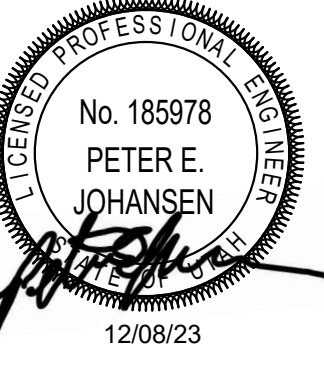
12/10/2023 12:54:44 PM

LIGHTING/SPACE CONTROL TYPE SCHEDULE

WIRING LEGEND	APPROVED MANUFACTURERS	LIGHTING CONTROL ID	GENERAL NOTES										GENERAL NOTES							
_____ LINE VOLTAGE WIRING - - - - - 0-10V WIRING CAT5E CABLEING _____ WIRING BY OTHERS ○---○ TMP SEGMENT NETWORK CABLEING	1. WATTSTOPPER (BASIS OF DESIGN) 2. NIIGHT 3. HUBBELL BUILDING AUTOMATION 4. GREENGATE	1. # = NUMBER OF ZONES 2. D = DIMMING, S = SWITCHING 3. P = DAYLIGHT PHOTOCELL 4. L = PLUG LOAD CONTROLLER 5. # = INSTANCE	1. COORDINATE INITIAL PROGRAMMING WITH OWNER AND MODIFY CONTROL TIMES AND OPERATION AS REQUESTED BY OWNER. 2. PROVIDE FINE TUNING PROGRAMMING AND ADJUSTMENTS UPON REQUEST BY OWNER WITHIN FIRST 6 MONTHS AFTER SUBSTANTIAL COMPLETION. 3. PROVIDE CUSTOMIZED ENGRAVED PERMANENT BUTTON LABELS ON EACH SWITCH, LABEL TO MATCH BUTTON LABEL ID OR AS DIRECTED BY OWNER. 4. PART NUMBERS SHOWN ARE BASED ON WATTSTOPPER AS THE BASIS OF DESIGN. ALL APPROVED MANUFACTURERS ARE SUBJECT TO MEETING ALL FUNCTIONS AND CAPABILITIES OF THE BASIS OF DESIGN SYSTEM AND PRODUCTS. FAILURE TO MEET THESE SHALL REQUIRE THE CONTRACTOR TO PROVIDE A SYSTEM THAT DOES AT NO ADDITIONAL COST.										5. REFER TO PLANS FOR LOCATIONS AND QUANTITIES OF DEVICES. 6. INSTALL ONE OF EACH CONTROL TYPE WITH PROGRAMMING, ADJUST, AND OBTAIN OWNERS APPROVAL PRIOR TO PROGRAMMING THE REMAINING CONTROLS. 7. WIRING MAY VARY BETWEEN MANUFACTURERS. CONTRACTOR IS RESPONSIBLE FOR PROVIDING THE REQUIRED WIRING THAT WILL BOTH MEET THE MANUFACTURERS REQUIREMENTS AND MATCH WITH THE SHOWN SYSTEM. 8. PROVIDE COMPLETE SHOP DRAWING SUBMITTALS INCLUDING OCCUPANCY SENSOR LAYOUT AND COVERAGE PATTERNS. PROVIDE ADDITIONAL SENSORS AS REQUIRED FOR 100% COVERAGE OF SPACES WITH OCCUPANCY SENSOR CONTROL.							
ID	DETAIL	LIGHTS ON CONTROL	LIGHTS OFF CONTROL	LIGHTING CONTROL TYPE	DAYLIGHT SENSOR SETTING (FC)	TIME DELAY TO OFF (MIN)	BAS AUX RELAY SIGNAL	PLUG LOAD CONTROLLER	NETWORKED CONTROLS	BUTTON 1	BUTTON 2	BUTTON 3	BUTTON 4	BUTTON 5	BUTTON 6	BUTTON 7	BUTTON 8	BUTTON 9	NOTES	
1D1		MANUAL & OCCUPANCY	MANUAL OR OCCUPANCY	DIMMING 0-10V	-	15	RELAY CLOSED ON OCCUPANCY	-	-	FUNCTION: PRESS TOP-ON, HOLD TOP-RAISE LABEL ID: TOP-ON/RAISE/ BOTTOM-OFF/ LOWER	-	-	-	-	-	-	-	-	-	
1S1		MANUAL & OCCUPANCY	MANUAL OR OCCUPANCY	ON/OFF	-	15	RELAY CLOSED ON OCCUPANCY	-	-	FUNCTION: PRESS-ON PRESS-OFF LABEL ID: "ON/OFF"	-	-	-	-	-	-	-	-	-	
2D1		MANUAL & OCCUPANCY	MANUAL OR OCCUPANCY	DIMMING 0-10V	-	15	RELAY CLOSED ON OCCUPANCY	-	-	TOGGLE PRESS TOP-ON, PRESS BOTTOM-OFF, HOLD TOP-RAISE, HOLD BOTTOM-OFF/ LOWER	FUNCTION: PRESS- PRESET SCENE #01 ZONE "a" 0% ZONE "b" 75% ZONE "c" 100% LABEL ID: "PRE #1"	FUNCTION: PRESS- PRESET SCENE #02 ZONE "a" 0% ZONE "b" 50% ZONE "c" 100% LABEL ID: "PRE #2"	FUNCTION: PRESS- SELECT ZONE "a" FOR DIMMING LABEL ID: "ZONE a"	FUNCTION: PRESS- SELECT ZONE "b" FOR DIMMING LABEL ID: "ZONE b"	-	-	-	-	-	-
3D1		MANUAL & OCCUPANCY	MANUAL OR OCCUPANCY	DIMMING 0-10V	-	15	RELAY CLOSED ON OCCUPANCY	-	-	FUNCTION: PRESS TOP-ON, HOLD TOP-RAISE PRESS BOTTOM-OFF, HOLD BOTTOM-LOWER LABEL ID: TOP-ON/RAISE/ BOTTOM-OFF/ LOWER	FUNCTION: PRESS- PRESET SCENE #01 ZONE "a" 0% ZONE "b" 50% ZONE "c" 100% LABEL ID: "PRE #1"	FUNCTION: PRESS- SELECT ZONE "a" FOR DIMMING LABEL ID: "ZONE a"	FUNCTION: PRESS- SELECT ZONE "b" FOR DIMMING LABEL ID: "ZONE b"	FUNCTION: PRESS- SELECT ZONE "c" FOR DIMMING LABEL ID: "ZONE c"	-	-	-	-	-	-

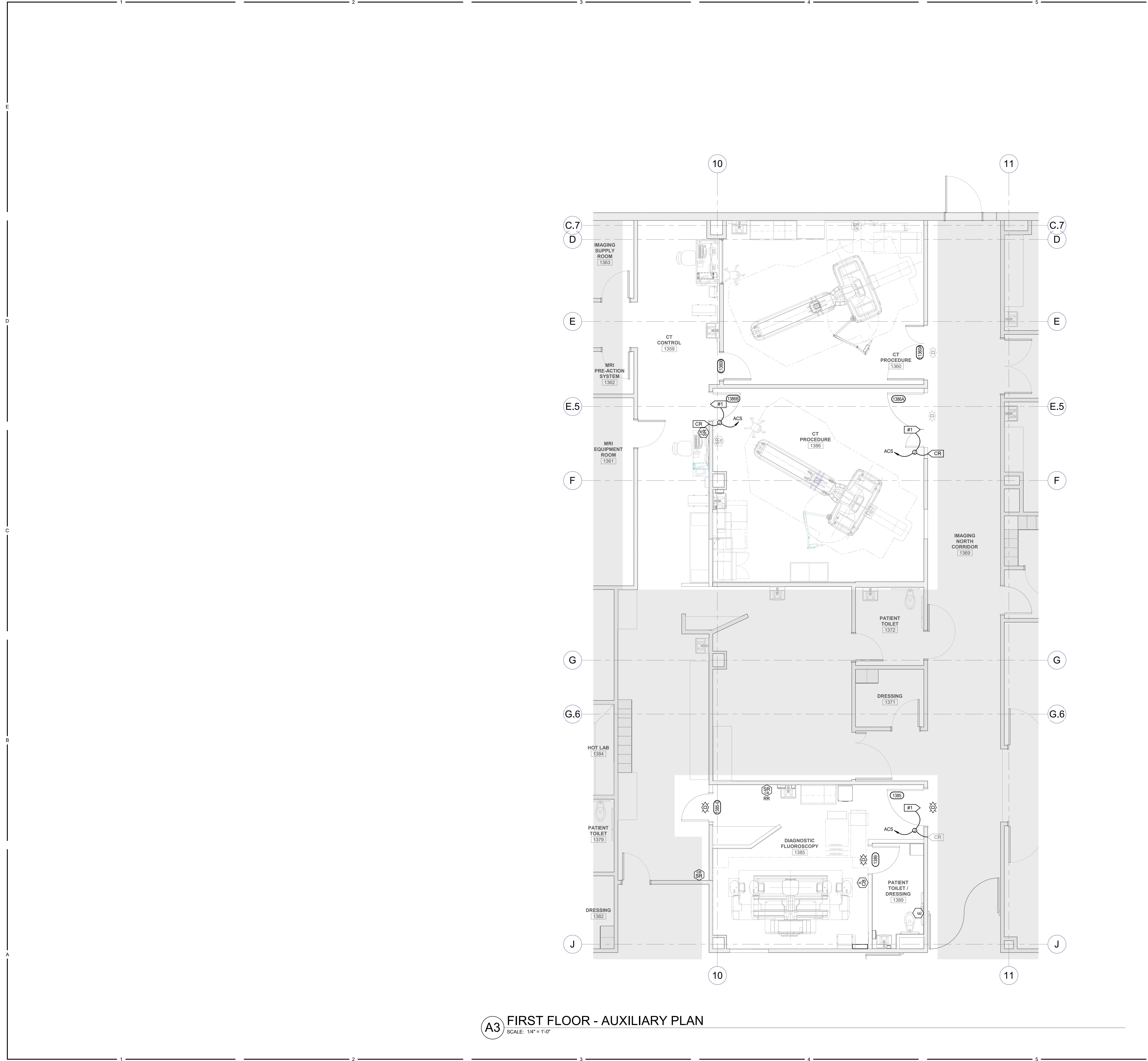
VCBO

SALT LAKE CITY - HQ
 524 SOUTH 600 EAST
 SALT LAKE CITY, UT 84102
 801.575.8800
 ST. GEORGE
 20 N. MAIN ST. #103
 ST. GEORGE, UT 84770
 435.522.7070
 VCBO.COM
 VCBO NUMBER: 22545
 CLIENT NUMBER: -
 DATE: 12-08-2023



REV DATE DESCRIPTION

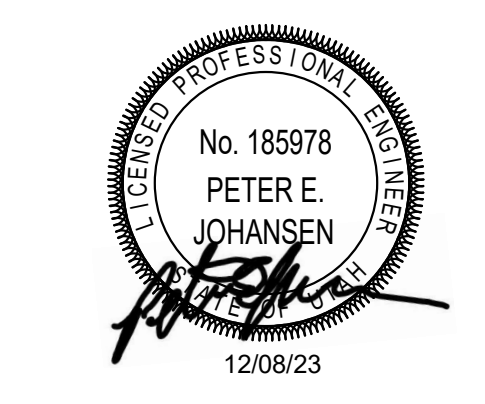
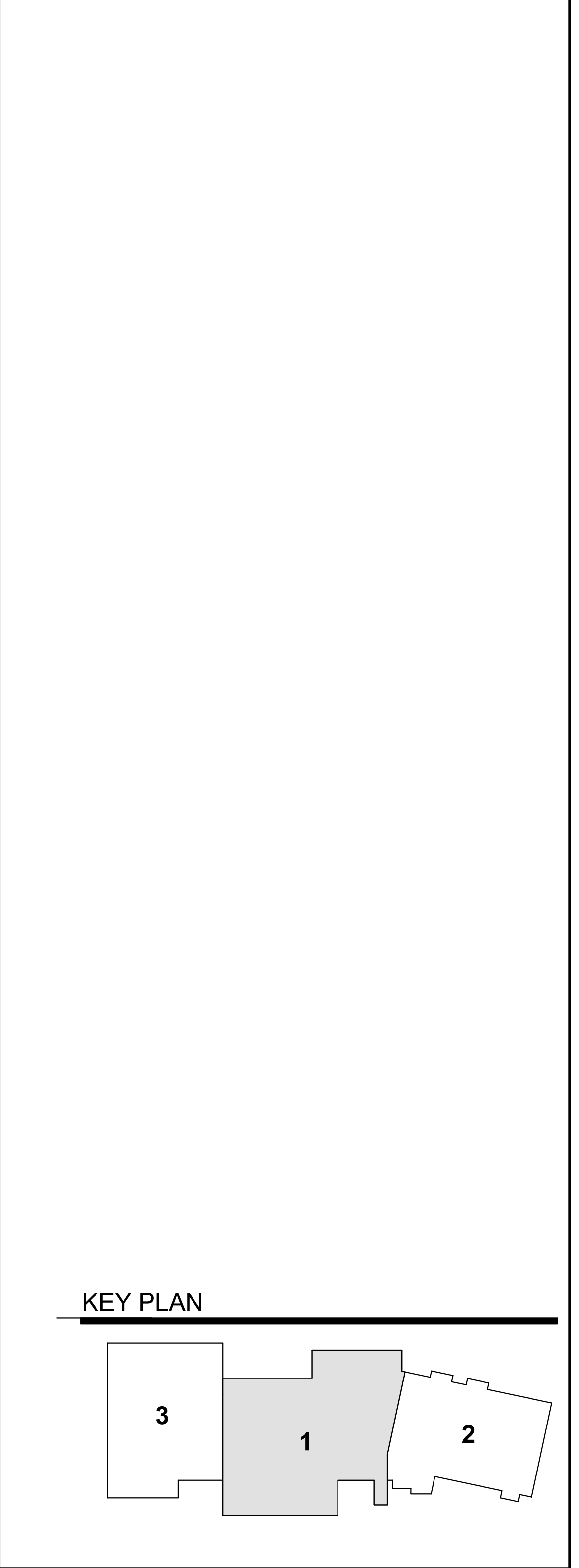
INTERMOUNTAIN PARK CITY HOSPITAL
 CT / FLUOROSCOPY REMODEL
 900 ROUND VALLEY DR, PARK CITY, UT 84080
 CONSTRUCTION DOCUMENTS



A3 FIRST FLOOR - AUXILIARY PLAN
SCALE: 1/4" = 1'-0"

GENERAL SHEET NOTES

SHEET KEYNOTES



REV	DATE	DESCRIPTION

HILL-ROM NURSE CALL SYMBOL LIST

SYMBOL	MANUF.	PART #	DESCRIPTION	BACKBOX	BOX MOUNTING HEIGHT
[NCM]	HILL-ROM	P2500NC1800	STAFF CONSOLE, DESK MOUNT	STEEL CITY 58371 3/4R, RACO 561, OR ANY OTHER SINGLE GANG BACK BOX.	
[NCM] _W	HILL-ROM	P2594NC3A00	STAFF CONSOLE, WALL MOUNT	STEEL CITY 58371 3/4R, RACO 561, OR ANY OTHER SINGLE GANG BACK BOX.	MOUNTS 54" AFF (TYP). LOCATION OF STATION MUST BE FIELD VERIFIED BY OWNER. CHECK SHOP DRAWINGS FOR NOTES.
[GA]	HILL-ROM	P2594NC3B00	GRAPHICAL ANNUNCIATOR	STEEL CITY 58371 3/4R, RACO 561, OR ANY OTHER SINGLE GANG BACK BOX.	MOUNTS 54" AFF (TYP). LOCATION OF STATION MUST BE FIELD VERIFIED BY OWNER. CHECK SHOP DRAWINGS FOR NOTES.
[BC]	HILL-ROM	P2505NC1800	AUDIO STATION BED CONNECTOR (ASBC)	GARVIN 52181-3M, WITH GARVIN 52C13 RING, OR ANY OTHER 4" SQUARE 3.5" DEEP BACK BOX WITH SINGLE GANG MUD RING.	MOUNTS 18" AFF (TYP). LOCATION OF STATION MUST BE FIELD VERIFIED BY OWNER. CHECK SHOP DRAWINGS FOR NOTES.
[ED]	HILL-ROM	P2516A01	EQUIPMENT RECEPTACLE	STEEL CITY 58371 3/4R, RACO 561, OR ANY OTHER 4" SQUARE 2 1/8" DEEP BACK BOX, WITH SINGLE GANG MUD RING.	LOCATION OF DEVICE MUST BE FIELD VERIFIED BY OWNER. CHECK SHOP DRAWINGS FOR NOTES. TYPICAL MOUNTS IN HEADWALL AT 48" AFF WITHIN 24" OF BED.
[D]	HILL-ROM	P2506NC1800	DOME LIGHT, SINGLE LED	RACO 231, WITH RACO 778 RING, OR ANY OTHER SINGLE GANG BACK BOX.	MOUNTS OUTSIDE PATIENT ROOM DOORWAY (TYP.). MAKE SURE LIGHT CAN BE EASILY SEEN FROM CORRIDOR.
[D]	HILL-ROM	P2506NC8A00-D	ICON BASED-LIGHT LED DOME LIGHT	RACO 231, WITH RACO 778 RING, OR ANY OTHER SINGLE GANG BACK BOX.	MOUNTS OUTSIDE PATIENT ROOM DOORWAY (TYP.). MAKE SURE LIGHT CAN BE EASILY SEEN FROM CORRIDOR.
[D]	HILL-ROM	P2506NC8A00-7	ICON BASED-LIGHT LED ZONE LIGHT	RACO 231, WITH RACO 778 RING, OR ANY OTHER SINGLE GANG BACK BOX.	MOUNTS OUTSIDE PATIENT ROOM DOORWAY (TYP.). MAKE SURE LIGHT CAN BE EASILY SEEN FROM CORRIDOR.
[POE-24]	HILL-ROM	P2519NC1A24	POE SWITCH		
[PB]	HILL-ROM	P2520A07	CODE BLUE PUSH BUTTON SWITCH	RACO 561 BACK BOX.	LOCATION OF DEVICE MUST BE FIELD VERIFIED BY OWNER. CHECK SHOP DRAWINGS FOR NOTES. TYP MOUNTS AT 48" AFF.
[PC]	HILL-ROM	P2520A07	PUSH FOR ASSISTANCE PUSH BUTTON SWITCH	RACO 561 BACK BOX, OR ANY OTHER 2.5" DEEP SINGLE GANG BACK BOX.	MOUNTS 54" AFF (TYP). LOCATION OF STATION MUST BE FIELD VERIFIED BY OWNER. CHECK SHOP DRAWINGS FOR NOTES.
[PE]	HILL-ROM	P2520A08	STAFF EMERGENCY PUSH BUTTON SWITCH	RACO 561 BACK BOX, OR ANY OTHER 2.5" DEEP SINGLE GANG BACK BOX.	LOCATION OF DEVICE MUST BE FIELD VERIFIED BY OWNER. CHECK SHOP DRAWINGS FOR NOTES. TYP MOUNTS AT 48" AFF.
[E]	HILL-ROM	P2520B01	BATH SWITCH, W/CANCEL, SUPERVISED	RACO 561 BACK BOX, OR ANY OTHER 2.5" DEEP SINGLE GANG BACK BOX.	(TOILET) MOUNT 42" AFF IN EASY REACH OF PERSON SITTING ON TOILET. PULL CORD SHOULD BE EXACTLY 6" AFF.
[E]	HILL-ROM	P2520B02	BATH SWITCH, W/O CANCEL, SUPERVISED	RACO 561 BACK BOX, OR ANY OTHER 2.5" DEEP SINGLE GANG BACK BOX.	(SHOWER) MOUNT 78" AFF AWAY FROM DIRECT WATER SPRAY OF SHOWER HEAD. PULL CORD SHOULD BE EXACTLY 6" AFF. MUST BE IN REACH OF PERSON LYING ON FLOOR.
[UPS, APC Rackmount Non-Service]	HILL-ROM	P2521B02	UPS, RACK MOUNTABLE, 2U - NON-SEISMIC		
[ST]	HILL-ROM	P2594NC1801	STAFF STATION - STANDARD ROOM STATION W/O CODE	STEEL CITY GW-225G, RACO 691 OR ANY OTHER 2.5" DEEP, TWO OR THREE GANG BACK BOX.	MOUNTS 54" AFF (TYP). LOCATION OF STATION MUST BE FIELD VERIFIED BY OWNER. CHECK SHOP DRAWINGS FOR NOTES.
[GR]	HILL-ROM	P2594NC2C00	GRAPHICAL ROOM STATION (GRS) - STAFF	STEEL CITY GW-225G, RACO 691 OR ANY OTHER 2.5" DEEP, TWO OR THREE GANG BACK BOX.	MOUNTS 54" AFF (TYP). LOCATION OF STATION MUST BE FIELD VERIFIED BY OWNER. CHECK SHOP DRAWINGS FOR NOTES.
[GR]	HILL-ROM	P2594NC2C11	GRAPHICAL ROOM STATION (GRS) - PATIENT	STEEL CITY GW-225G, RACO 691 OR ANY OTHER 2.5" DEEP, TWO OR THREE GANG BACK BOX.	MOUNTS 54" AFF (TYP). LOCATION OF STATION MUST BE FIELD VERIFIED BY OWNER. CHECK SHOP DRAWINGS FOR NOTES.
[RA]	HILL-ROM	P2594NC4A10	REMOTE AUDIO DEVICE	STEEL CITY GW-225G, RACO 691 OR ANY OTHER 2.5" DEEP, TWO OR THREE GANG BACK BOX.	(TOILET) MOUNT 42" AFF IN EASY REACH OF PERSON SITTING ON TOILET. PULL CORD SHOULD BE EXACTLY 6" AFF.
[RCB]	HILL-ROM	P2599NC2A00	RCB2 ROOM CONTROL BOARD	STEEL CITY GW-225G, RACO 696 OR ANY OTHER 3.5" DEEP, TWO OR THREE GANG BACK BOX.	ROOM BOX IS 12"x12"x4" ELECTRICAL BOX PROVIDED BY HILL-ROM. ROOM BOX IS MOUNTED ABOVE CEILING OUTSIDE PATIENT ROOMS. ROOM BOARD IS INSTALLED INSIDE ROOM BOX.
[RTLS]	HILL-ROM	RTLS-CLOSED	RTLS - STAFF LOCATING LOCATION-CLOSED AREA	STEEL CITY GW-225G, RACO 691 OR ANY OTHER TWO GANG BACK BOX.	
[RTLS]	HILL-ROM	RTLS-OPEN	RTLS - STAFF LOCATING LOCATION-GLASS/OPEN AREA	STEEL CITY GW-225G, RACO 691 OR ANY OTHER TWO GANG BACK BOX.	
[RTLS]	HILL-ROM	RTLS-BAY	RTLS - STAFF LOCATING LOCATION-BAY	STEEL CITY GW-225G, RACO 691 OR ANY OTHER TWO GANG BACK BOX.	
[S]	HILL-ROM		PILLOW SPEAKER, REQUIRES ASBC.		
[R]	CURBELL	MAP985A	REMOTE ENTERTAINMENT STATION	STEEL CITY GW-225G, RACO 691 OR ANY OTHER TWO GANG BACK BOX.	MOUNTS 54" AFF (TYP). LOCATION OF STATION MUST BE FIELD VERIFIED BY OWNER. CHECK SHOP DRAWINGS FOR NOTES.
[P]	HILL-ROM	P2520A09	CODE PINK PUSH BUTTON SWITCH	RACO 561 BACK BOX.	MOUNTS 54" AFF (TYP). LOCATION OF STATION MUST BE FIELD VERIFIED BY OWNER. CHECK SHOP DRAWINGS FOR NOTES.
[P]	HILL-ROM	P2594NC1B11	PATIENT STATION - W/CODE BLUE	STEEL CITY GW-225G, RACO 691 OR ANY OTHER 2.5" DEEP, TWO OR THREE GANG BACK BOX.	MOUNTS 54" AFF (TYP). LOCATION OF STATION MUST BE FIELD VERIFIED BY OWNER. CHECK SHOP DRAWINGS FOR NOTES.

CARD ACCESS DOOR TYPE SCHEDULE

DOOR TYPE #	SYMBOL	DESCRIPTION	PROTECTED SIDE ELEVATION	UNPROTECTED SIDE ELEVATION	LOCK TYPE(S)	DIVISION OF WORK AND COMMENTS
TYPE 1		DOUBLE DOOR, 1 CARD READER			ELECTRIC STRIKE	SECURITY CONTRACTOR PROVIDES: • CR, CI, LPS HARDWARE CONTRACTOR PROVIDES: • EED, FH, DH, EPT, MD LOCK CONTROLLED BY: • CR
TYPE 2		SINGLE DOOR, 1 CARD READER			ELECTRIC STRIKE	SECURITY CONTRACTOR PROVIDES: • CR, FH, CI, LPS HARDWARE CONTRACTOR PROVIDES: • ES LOCK CONTROLLED BY: • CR
TYPE 3		SINGLE DOOR, 1 CARD READER			ELECTRIC STRIKE	SECURITY CONTRACTOR PROVIDES: • CR, FH, CI, LPS HARDWARE CONTRACTOR PROVIDES: • ES, MD LOCK CONTROLLED BY: • CR

NOTES

- PROVIDE RACEWAY AND EQUIPMENT AS INDICATED FOR CARD ACCESS DOOR TYPE INDICATED. REFER TO SECTION 281300 AND CARD ACCESS LOCK CONTROL DETAILS FOR ADDITIONAL REQUIREMENTS.
- PROVIDE CONCEALED, 75° C TYPICAL FOR LINES SHOWN TO DEVICE BOXES ON PROTECTED SIDE AND UNPROTECTED SIDE ELEVATIONS.
- CONFIRM CORRECT CARD ACCESS DOOR RACEWAY, LOCK VOLTAGE, AND EXIT SWITCH CURRENT RATING (2 AMPS MIN.) WITH DIV. 8 FURNISHED CARD ACCESS DOOR HARDWARE PER DIV. 8 DOOR HARDWARE SPECIFICATIONS.
- LOCATE CARD READER BOX AS INDICATED ON FLOOR PLANS. RACEWAY AND BOXES BY DIV. 26. REFER TO 281300 FOR CARD ACCESS SYSTEM REQUIREMENTS.
- DOUBLE 4SQ J-BOX ON PROTECTED SIDE OF DOORWAY (SIDE OPPOSITE OF CARD READER) ABOVE ACCESSIBLE CEILING OR IN OTHER ACCESSIBLE LOCATION. PROVIDE COVER FOR J-BOX.
- ELECTRIC LOCKING HARDWARE (MAG LOCKS, ELECTRIC STRIKES, POWER TRANSFER HINGES, ETC.) BY DIV 8. REVIEW DOOR HARDWARE FURNISHED AND VERIFY LOCK VOLTAGES AND OPERATIONAL FUNCTIONALITY OF LOCKS. CONTACT ENGINEER WITH QUESTIONS OR CONCERNS.

ABBREVIATIONS

1G	=	1-GANG OR SINGLE GANG
4SQ	=	FOUR SQUARE JUNCTION BOX
AO	=	AUTO OPENER
AR	=	AS REQUIRED
ACC	=	ACCESSIBLE
ACS	=	ACCESS CONTROL SYSTEM CONTROLLER
ADA	=	ASSISTED DISABILITY OPENER
AED	=	ELECTRIC EXIT DEVICE/CR COMBO ON DOOR
AEL	=	ELECTRIC LOCK/CR COMBO ON DOOR
C	=	CONDUIT
CI	=	DOOR CONTACT INDICATOR SWITCH
CR	=	CARD READER
CRMS	=	CARD READER/MAG STRIPE
DH	=	DOOR HARNESS
DBL	=	DOUBLE
DED	=	DELAYED EXIT DEVICE
DIR	=	DIRECTION
ED	=	EXIT DEVICE
EH	=	ELECTRIC HINGE
EL	=	ELECTRIC LOCKSET
ES	=	ELECTRIC STRIKE
EDL	=	ELECTRIC DEADLATCH
EED	=	ELECTRIFIED EXIT DEVICE
ELC	=	EMERGENCY LOCK CONTROL
EPT	=	ELECTRIC POWER TRANSFER
FA	=	FIRE ALARM SYSTEM
FH	=	FRAME HARNESS
HDWR	=	HARDWARE
IDS	=	INTRUSION DETECTION SYSTEM
KS	=	KEY SWITCH
LS	=	LOCK INDICATOR SWITCH IN HARDWARE
LX	=	PANIC HARDWARE LATCH POSITION SWITCH
LPS	=	LOCK POWER SUPPLY
MD	=	MOTION DETECTOR
ML	=	ELECTROMAGNETIC LOCK
OCC	=	OCCUPANCY
OFF	=	OBTAIN FROM PLANS
PB	=	PUSH BUTTON RELEASE
PH	=	PANIC HARDWARE
PP	=	PUSH PAD ACTUATOR
PS	=	POWER SUPPLY
PEE	=	POE EXIT DEVICE
PEL	=	POE ELECTRIC LOCKSET
PWR	=	POWER
QTY	=	QUANTITY
RS	=	REMOTE OPEN SWITCH
REX	=	REQUEST TO EXIT SWITCH/FUNCTION
TLC	=	TIME/SYSTEM LOCK CONTROL
TYP	=	TYPICAL
W/	=	WITH

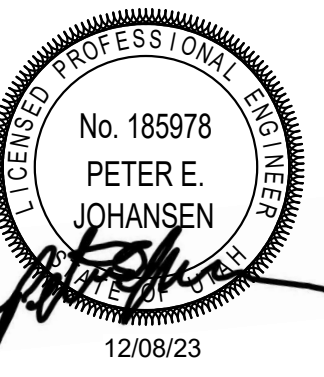
VCBO

SALT LAKE CITY - HQ
524 SOUTH 600 EAST
SALT LAKE CITY, UT 84102
801.575.8800

ST. GEORGE
20 N. MAIN ST. #103
ST. GEORGE, UT 84770
435.522.7070

VCBO.COM

VCBO NUMBER: 22545
CLIENT NUMBER:
DATE: 12-08-2023



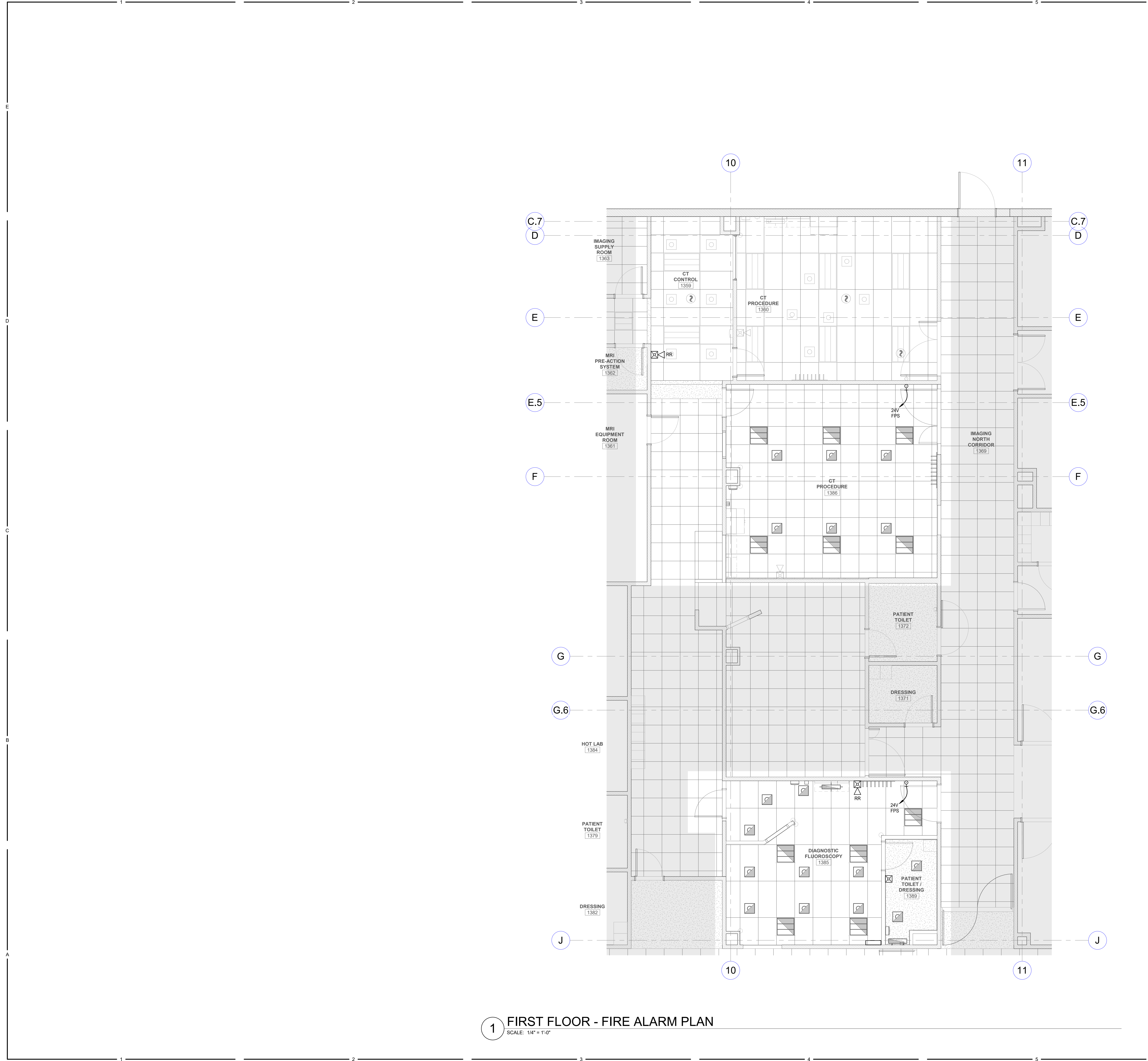
REV DATE DESCRIPTION

**INTERMOUNTAIN PARK CITY HOSPITAL
CT / FLUOROSCOPY REMODEL**
900 ROUND VALLEY DR, PARK CITY, UT 84080
CONSTRUCTION DOCUMENTS

AUXILIARY DIAGRAMS & DETAILS

EY601

12/14/2023 12:56:23 PM

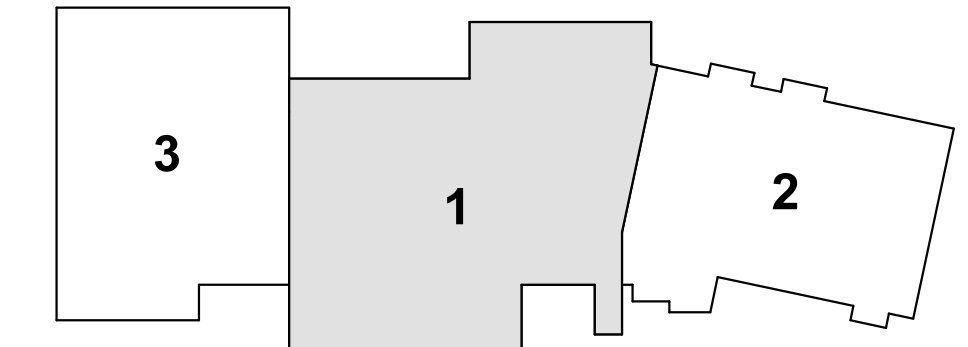


1 FIRST FLOOR - FIRE ALARM PLAN
SCALE: 1/4" = 1'-0"

GENERAL SHEET NOTES

SHEET KEYNOTES

KEY PLAN

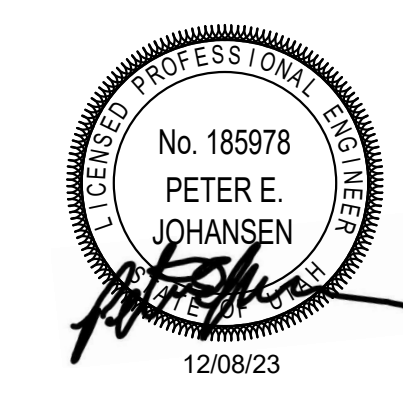


VCBO

SALT LAKE CITY - HQ
524 SOUTH 600 EAST
SALT LAKE CITY, UT 84102
801.575.8800

ST. GEORGE
20 N. MAIN ST. #103
ST. GEORGE, UT 84770
435.522.7070

VCBO.COM
VCBO NUMBER: 22545
CLIENT NUMBER: -
DATE: 12-08-2023



REV	DATE	DESCRIPTION

**INTERMOUNTAIN PARK CITY HOSPITAL
CT / FLUOROSCOPY REMODEL**
900 ROUND VALLEY DR, PARK CITY, UT 84080
CONSTRUCTION DOCUMENTS

FIRST FLOOR - FIRE ALARM PLAN

FA101