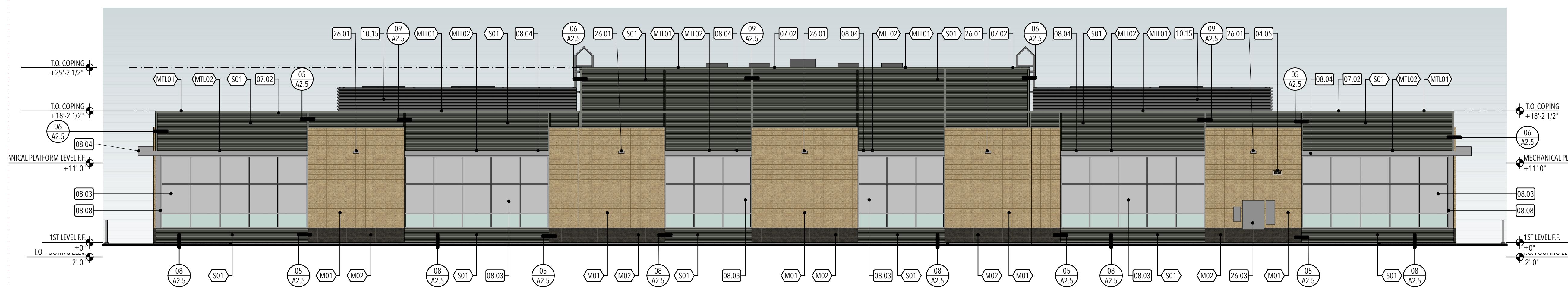


**NORTH ELEVATION**

A 1/8" = 1'-0"



**SOUTH ELEVATION**

B 1/8" = 1'-0"

**GENERAL EXTERIOR ELEVATION NOTES:**

- A. Re: Exterior Materials Legend for exterior materials and finishes.
- B. Contractor shall leave a 3/4" gap between all dissimilar materials - typ. Gap shall be filled with backer rod and sealant. Coordinate sealant color with Architect.
- C. All exposed exterior steel shall be painted (i.e. lintels, columns, beams, etc.).
- D. Contractor shall paint all vent pipes, exhaust fans, and other roof top equipment and penetrations that are visible from the ground plane.
- E. Re: electrical drawings for exterior power supply locations, lighting, horn strobes, card readers, etc. Contractor shall paint all electrical panels and other electrical equipment - coordinate paint color with Architect.
- F. Re: plumbing drawings for downspout nozzle, hose bib and FDC connection locations.

**GENERAL EXTERIOR ENVELOPE NOTES:**

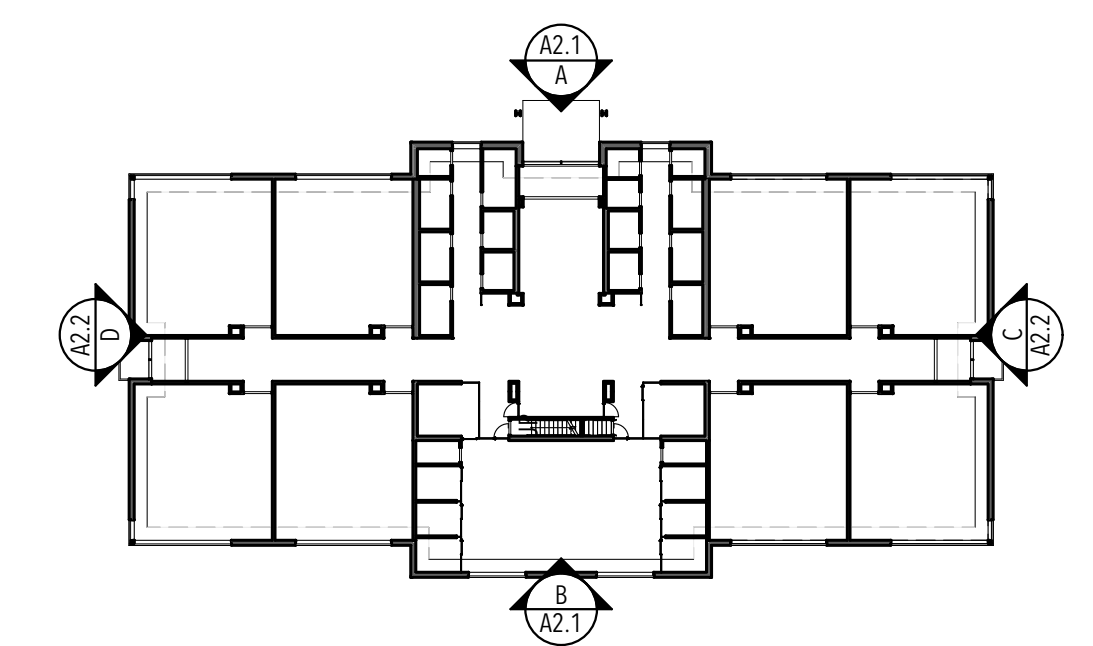
- A. Pre-Construction Conference: Prior to the start of submittals, an Envelope Pre-Construction Conference is to be conducted to review installation methods and material compatibility with all associated envelope contractors. Work on the specification sections dealing with the envelope are to include, but not be limited to, the following: 07 2500 - Weather Barriers, 07 2210 - Roof Insulation Panels, 07 2726 - Air/Weather Barriers, 07 2101 - Continuous Thermal Insulation, 07 5423 - PVC Roofing, 08 4413 - Glazed Aluminum Storefront.
- B. Provide ICC-ES evaluation reports for all material installations.
- C. Provide a letter of material compatibility to other envelope system materials.
- D. The installed air barrier on the building is required to be continuous. Seal all penetrations, joints and flashings as required by material manufacturer's instructions.
- E. Contractor is responsible for all envelope work regardless of the location of the information in the construction documents.
- F. Install sealant at exterior side of all joints, seams, connections or openings which would allow water or air infiltration except as noted otherwise. Sealant color shall match adjacent surfaces. Color shall be approved by Architect.
- G. The Contractor is responsible for producing a weather-tight building, details and omissions to drawings notwithstanding. All drawing conflicts which may not allow a weather-tight condition shall be brought to the attention of the Architect.
- H. The drawings and specifications do not necessarily indicate or describe all work required for the full performance and completion of the work. It is intended that the work shall be of sound and quality construction and the Contractor shall be solely responsible for the inclusion of adequate amounts to cover installation of all items indicated, described or reasonably implied.

**EXTERIOR MATERIALS LEGEND:**

ID	MATERIAL	MANUFACTURER	COLOR/NOTES
<b>MASONRY</b>			
M01	Honed Face CMU	Amcor	Color: Pale Gold
M02	Split Face CMU	Amcor	Color: Charcoal
<b>METAL</b>			
MTL01	Prefinished Metal	-	Color: Match Metal Siding Panel (S01)
MTL02	Aluminum Storefront/Sunshades	Kawneer	Color: Clear Anodized Aluminum
<b>SIDING</b>			
S01	Prefinished Metal Siding Panel	MBCI	Masterline 16 panel; Color: Slate Gray
S02	Prefinished Metal Siding Panel	MBCI	Masterline 16 panel; Color: Colonial Red

**KEYED NOTES:**

- 04.02 Stone seminary sign - re: building elevations, 03/2.6 & 04/2.6
- 04.05 Stone address sign - re: building elevations, 01/2.6 & 02/2.6
- 05.02 Steel beam - re: structural. paint with high-performance paint system.
- 05.03 Steel column - re: structural. paint with high-performance paint system.
- 07.02 Prefinished metal coping cap - re: 08/A1.25. Match wall panel finish
- 07.03 Prefinished metal fascia - match wall panel finish
- 08.03 Scheduled aluminum storefront system - re: window elevations
- 08.04 Aluminum sunshade system - re: details
- 08.08 .040" aluminum brake metal - finish to match aluminum storefront. Re: details.
- 10.15 Pre-finished metal screen wall system - finish to match metal wall panels. Re: detail 01/A1.26.
- 26.01 Light fixture - re: electrical
- 26.03 Electrical equipment - re: electrical and civil
- 26.08 Light bollard on concrete pad - re: electrical

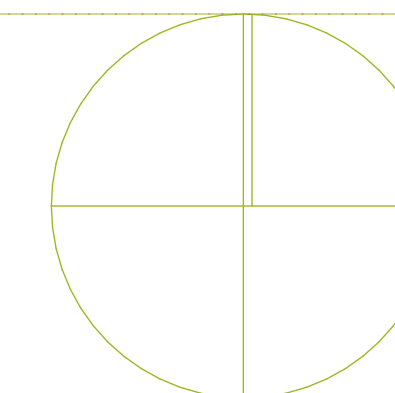


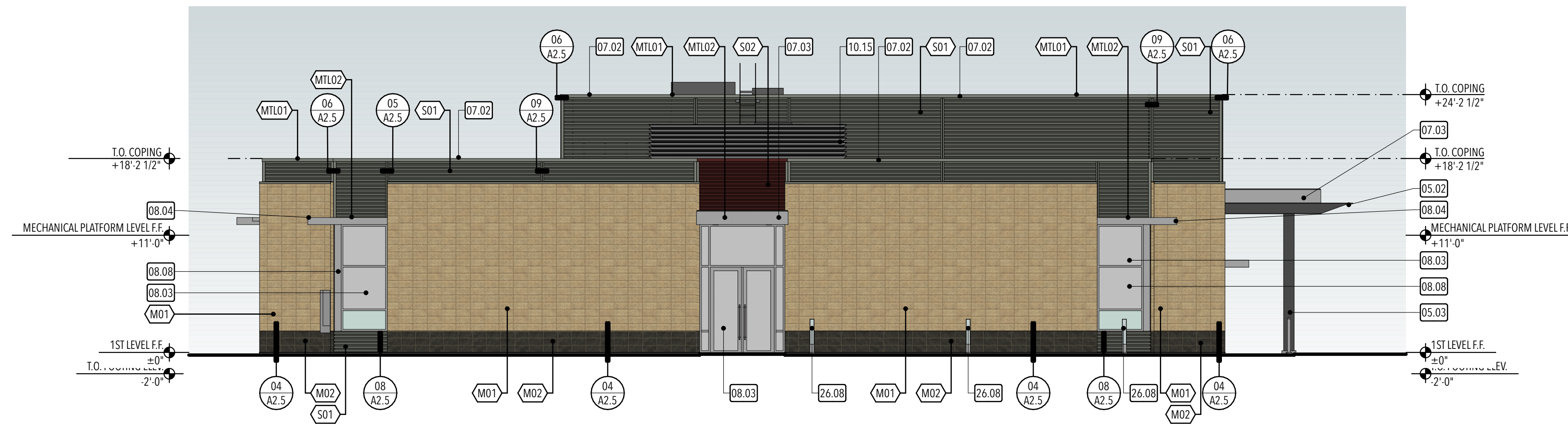
**STUDIO 333 ARCHITECTS**  
 333 24TH STREET  
 OGDEN, UT 84401  
 801.394.3033

**WEST FIELD SR SEMINARY**  
 4383 W 2200 S, OGDEN, UT

NO.	DATE	DESCRIPTION

CONFORMED SET  
 DATE: 04.27.23  
 PROJECT NUMBER: 2154

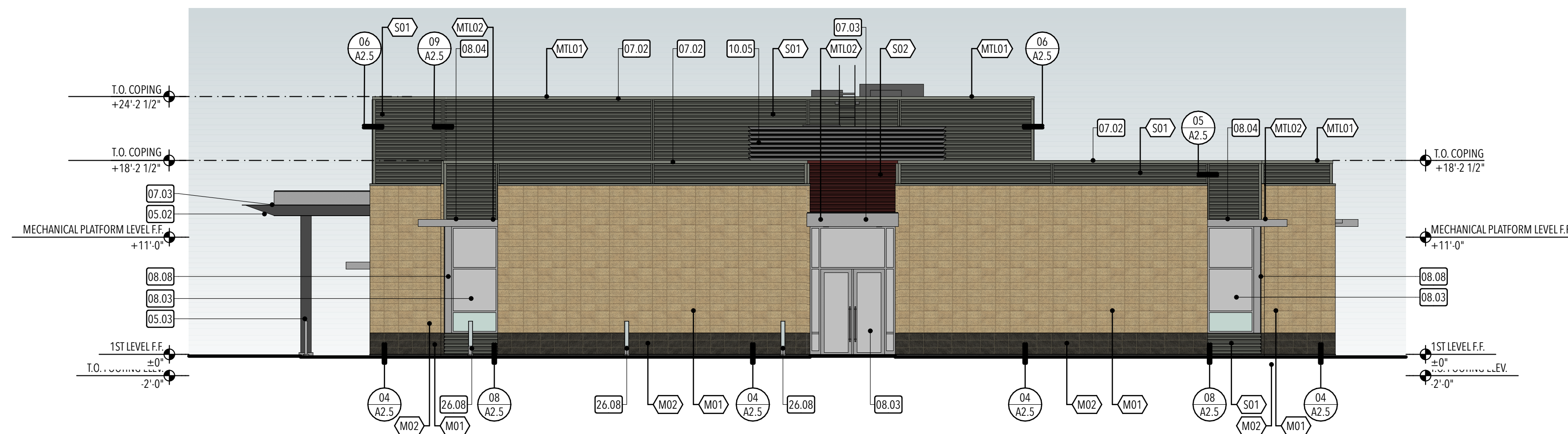




EAST ELEVATION

C

1/8" = 1'-0"



WEST ELEVATION

D

1/8" = 1'-0"

**GENERAL EXTERIOR ELEVATION NOTES:**

- A. Re: Exterior Materials Legend for exterior materials and finishes.
- B. Contractor shall leave a 3/4" gap between all dissimilar materials - typ. Gap shall be filled with backer rod and sealant. Coordinate sealant color with Architect.
- C. All exposed exterior steel shall be painted (i.e. lintels, columns, beams, etc.).
- D. Contractor shall paint all vent pipes, exhaust fans, and other roof top equipment and penetrations that are visible from the ground plane.
- E. Re: electrical drawings for exterior power supply locations, lighting, horn strobes, card readers, etc. Contractor shall paint all electrical panels and other electrical equipment - coordinate paint color with Architect.
- F. Re: plumbing drawings for downspout nozzle, hose bib and FDC connection locations.

**GENERAL EXTERIOR ENVELOPE NOTES:**

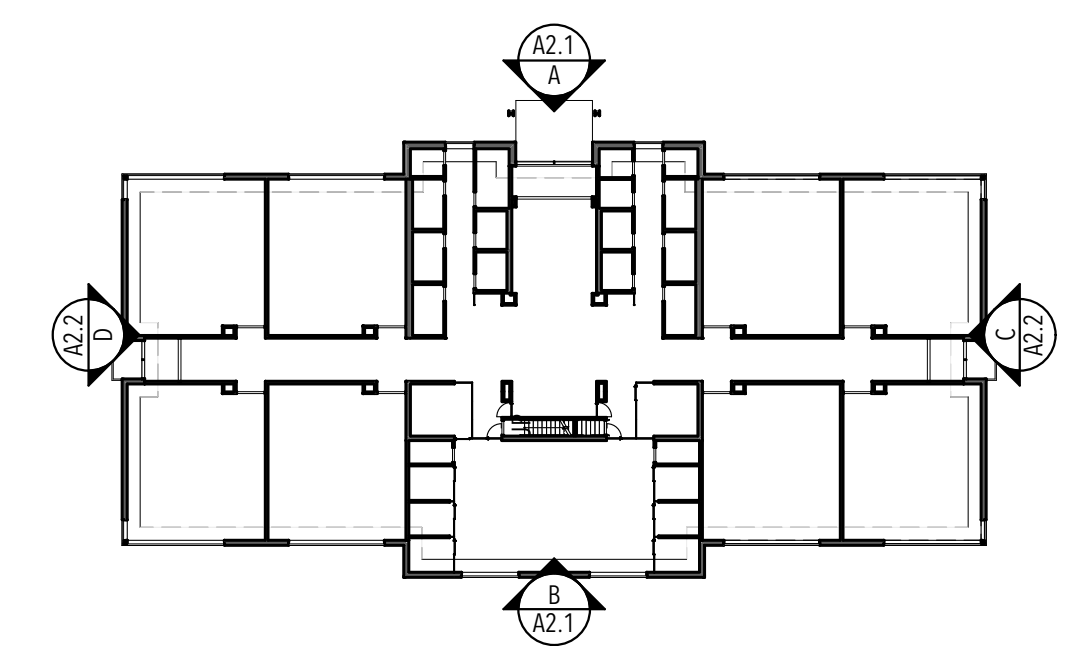
- A. Pre-Construction Conference: Prior to the start of submittals, an Envelope Pre-Construction Conference is to be conducted to review installation methods and material compatibility with all associated envelope contractors. Work on the specification sections dealing with the envelope are to include, but not be limited to, the following: 07 2500 - Weather Barriers, 07 2210 - Roof Insulation Panels, 07 2726 - Air/Weather Barriers, 07 2101 - Continuous Thermal Insulation, 07 5423 - PVC Roofing, 08 4413 - Glazed Aluminum Storefront.
- B. Provide ICC-ES evaluation reports for all material installations.
- C. Provide a letter of material compatibility to other envelope system materials.
- D. The installed air barrier on the building is required to be continuous. Seal all penetrations, joints and flashings as required by material manufacturer's instructions.
- E. Contractor is responsible for all envelope work regardless of the location of the information in the construction documents.
- F. Install sealant at exterior side of all joints, seams, connections or openings which would allow water or air infiltration except as noted otherwise. Sealant color shall match adjacent surfaces. Color shall be approved by Architect.
- G. The Contractor is responsible for producing a weather-tight building, details and omissions to drawings notwithstanding. All drawing conflicts which may not allow a weather-tight condition shall be brought to the attention of the Architect.
- H. The drawings and specifications do not necessarily indicate or describe all work required for the full performance and completion of the work. It is intended that the work shall be of sound and quality construction and the Contractor shall be solely responsible for the inclusion of adequate amounts to cover installation of all items indicated, described or reasonably implied.

**EXTERIOR MATERIALS LEGEND:**

ID	MATERIAL	MANUFACTURER	COLOR/NOTES
<b>MASONRY</b>			
M01	Honed Face CMU	Amcor	Color: Pale Gold
M02	Split Face CMU	Amcor	Color: Charcoal
<b>METAL</b>			
MTL01	Prefinished Metal	-	Color: Match Metal Siding Panel (S01)
MTL02	Aluminum Storefront/Sunshades	Kawneer	Color: Clear Anodized Aluminum
<b>SIDING</b>			
S01	Prefinished Metal Siding Panel	MBCI	Masterline 16 panel; Color: Slate Gray
S02	Prefinished Metal Siding Panel	MBCI	Masterline 16 panel; Color: Colonial Red

**KEYED NOTES:**

- 05.02 Steel beam - re: structural. paint with high-performance paint system.
- 05.03 Steel column - re: structural. paint with high-performance paint system.
- 07.02 Prefinished metal coping cap - re: 08/A1.25. Match wall panel finish
- 07.03 Prefinished metal fascia - match wall panel finish
- 08.03 Scheduled aluminum storefront system - re: window elevations
- 08.04 Aluminum sunshade system - re: details
- 08.08 .040" aluminum brake metal - finish to match aluminum storefront. Re: details.
- 10.05 22"x30" access door - re: detail
- 10.15 Pre-finished metal screen wall system - finish to match metal wall panels. Re: detail 01/A1.26.
- 26.08 Light bollard on concrete pad - re: electrical

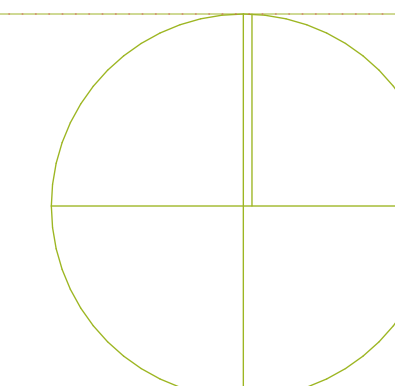


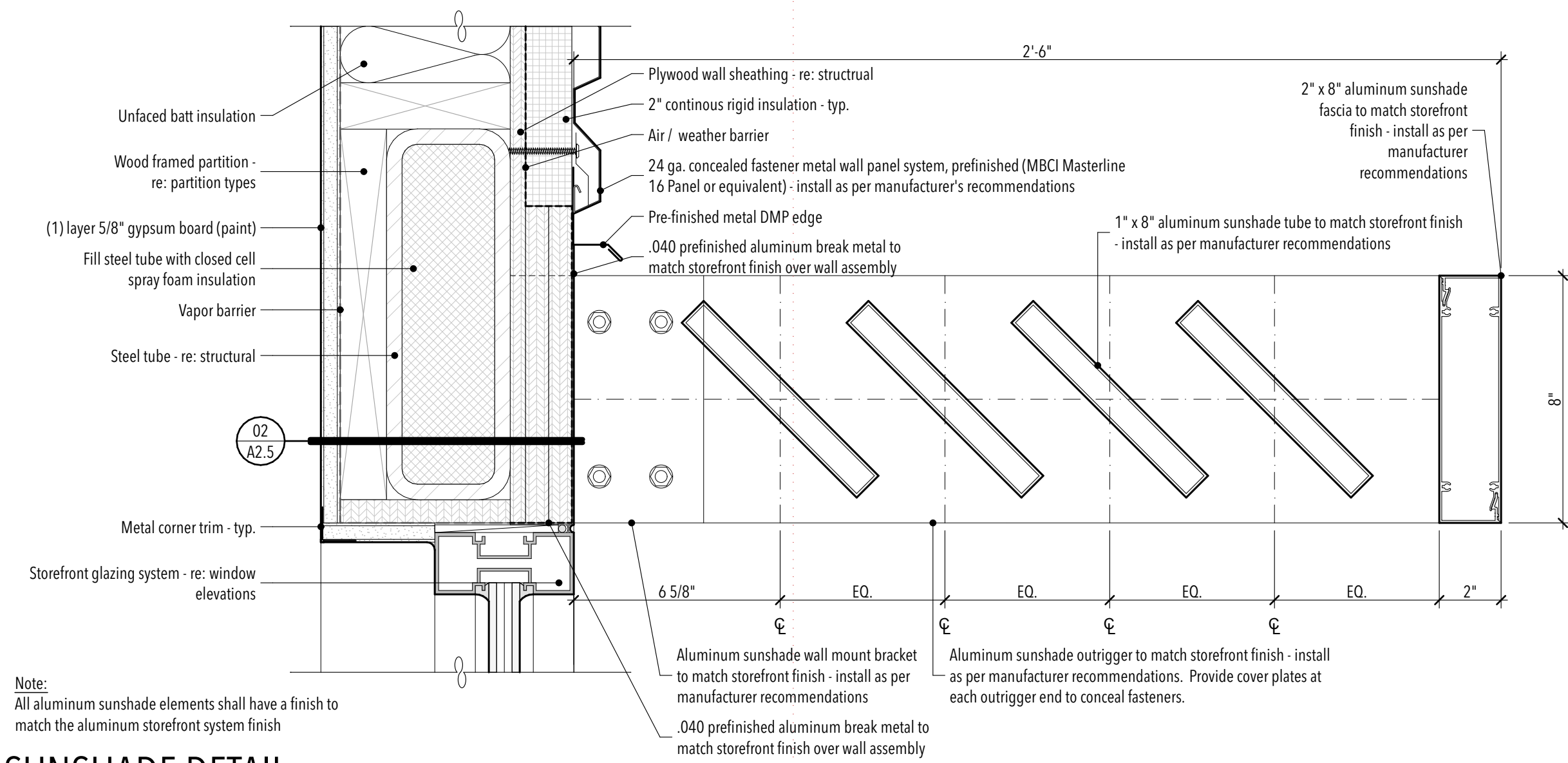
**STUDIO 333 ARCHITECTS**  
 333 24TH STREET  
 OGDEN, UT 84401  
 801.394.3033

**WEST FIELD SR SEMINARY**  
 4383 W 2200 S, OGDEN, UT

NO.	DATE	DESCRIPTION

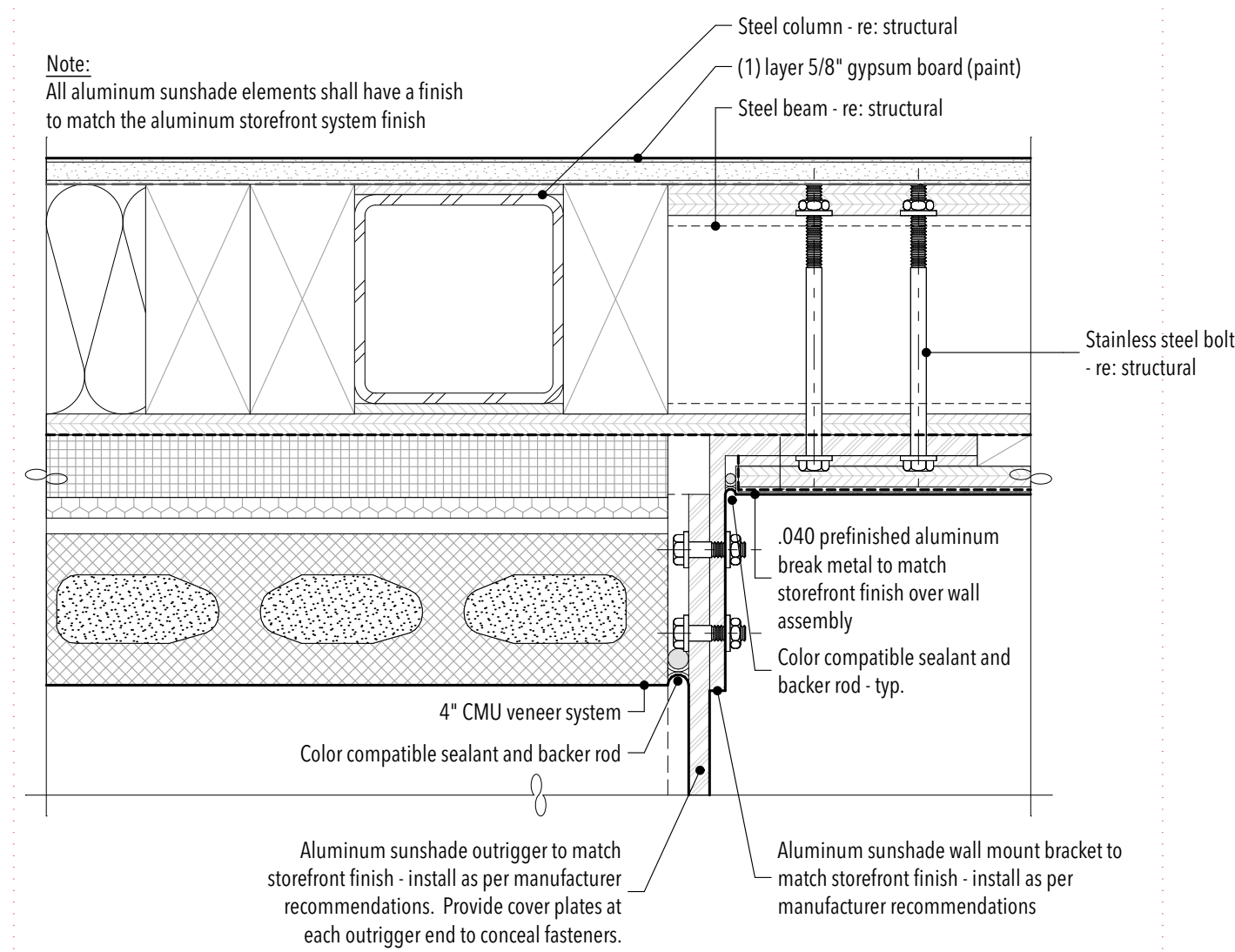
CONFORMED SET  
 DATE: 04.27.23  
 PROJECT NUMBER: 2154





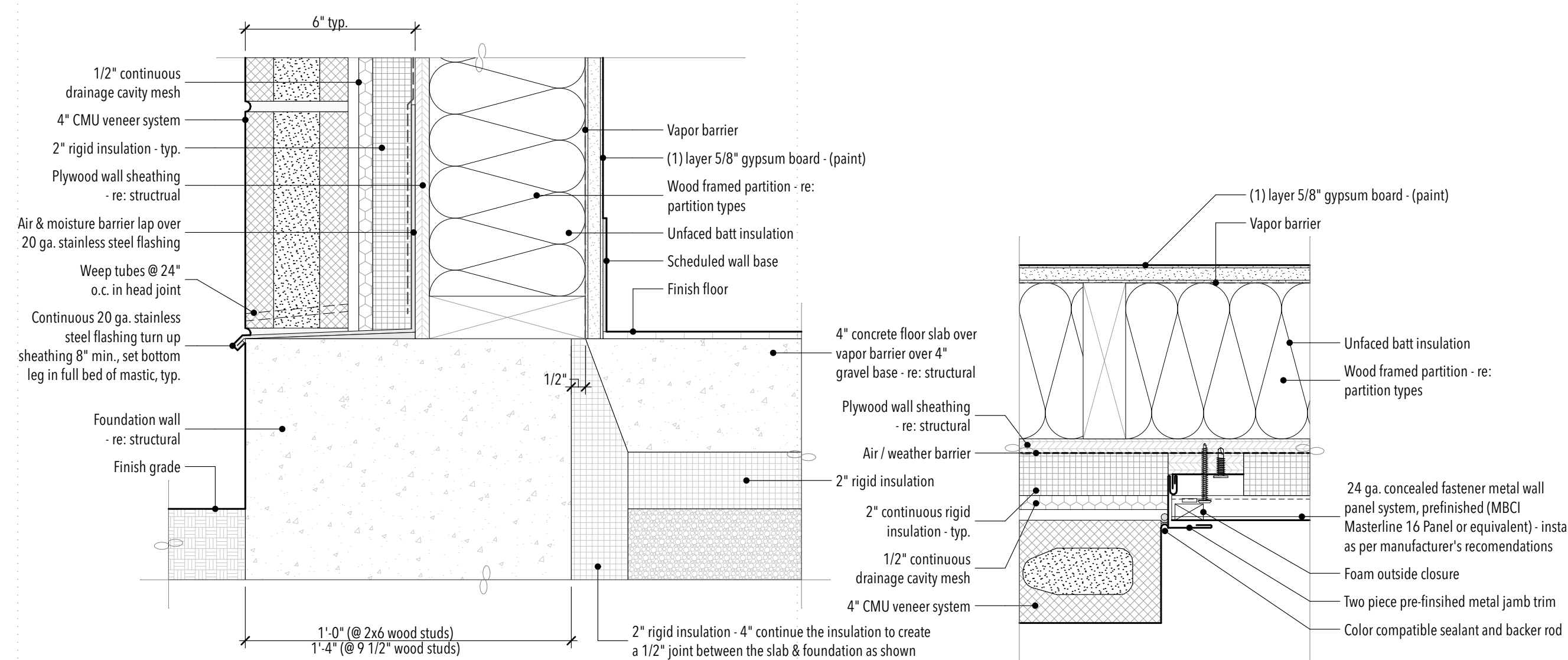
SUNSHADE DETAIL

01 3" = 1'-0"



SUNSHADE DETAIL

02 3" = 1'-0"

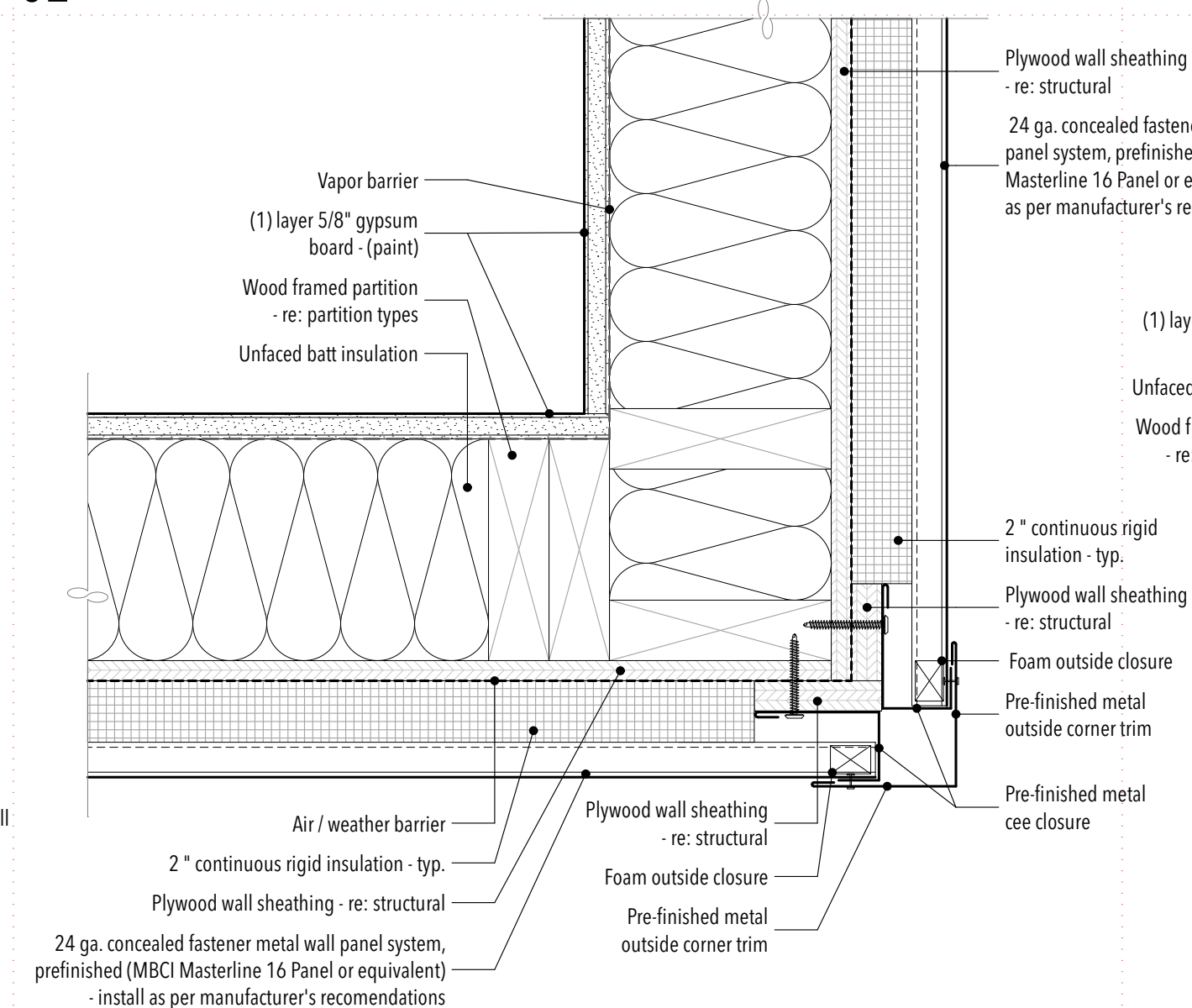


FOUNDATION DETAIL @ CMU VENEER

04 3" = 1'-0"

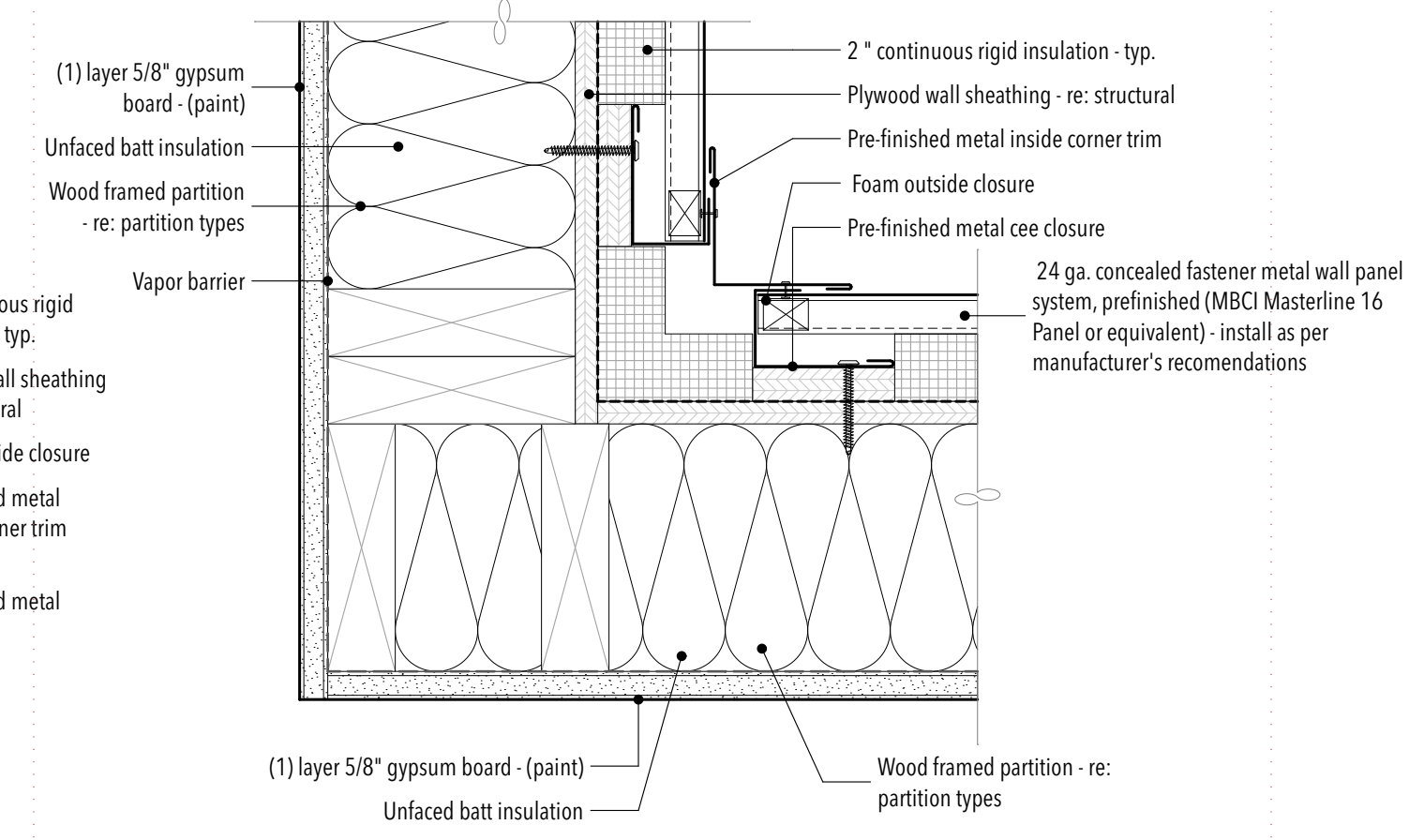
METAL SIDING DETAIL @ JAMB TRIM

05 3" = 1'-0"



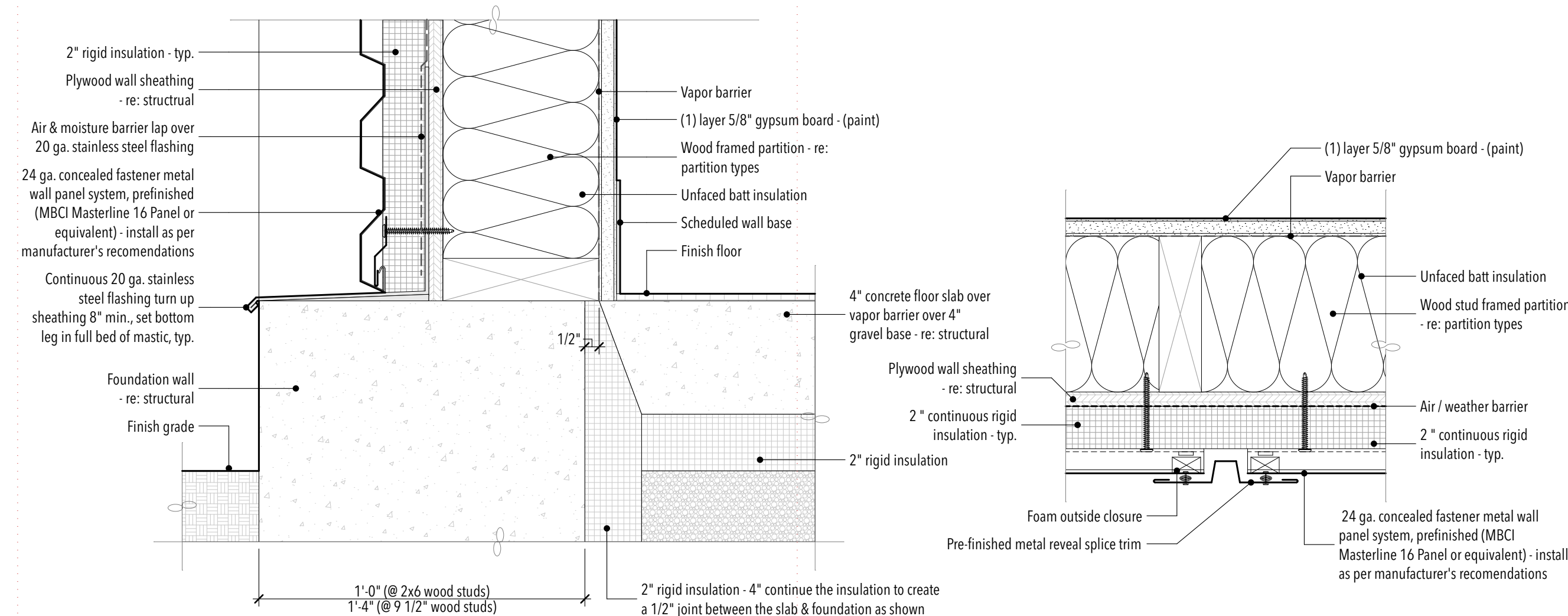
METAL SIDING OUTSIDE CORNER DETAIL

06 3" = 1'-0"



METAL SIDING INSIDE CORNER DETAIL

07 3" = 1'-0"

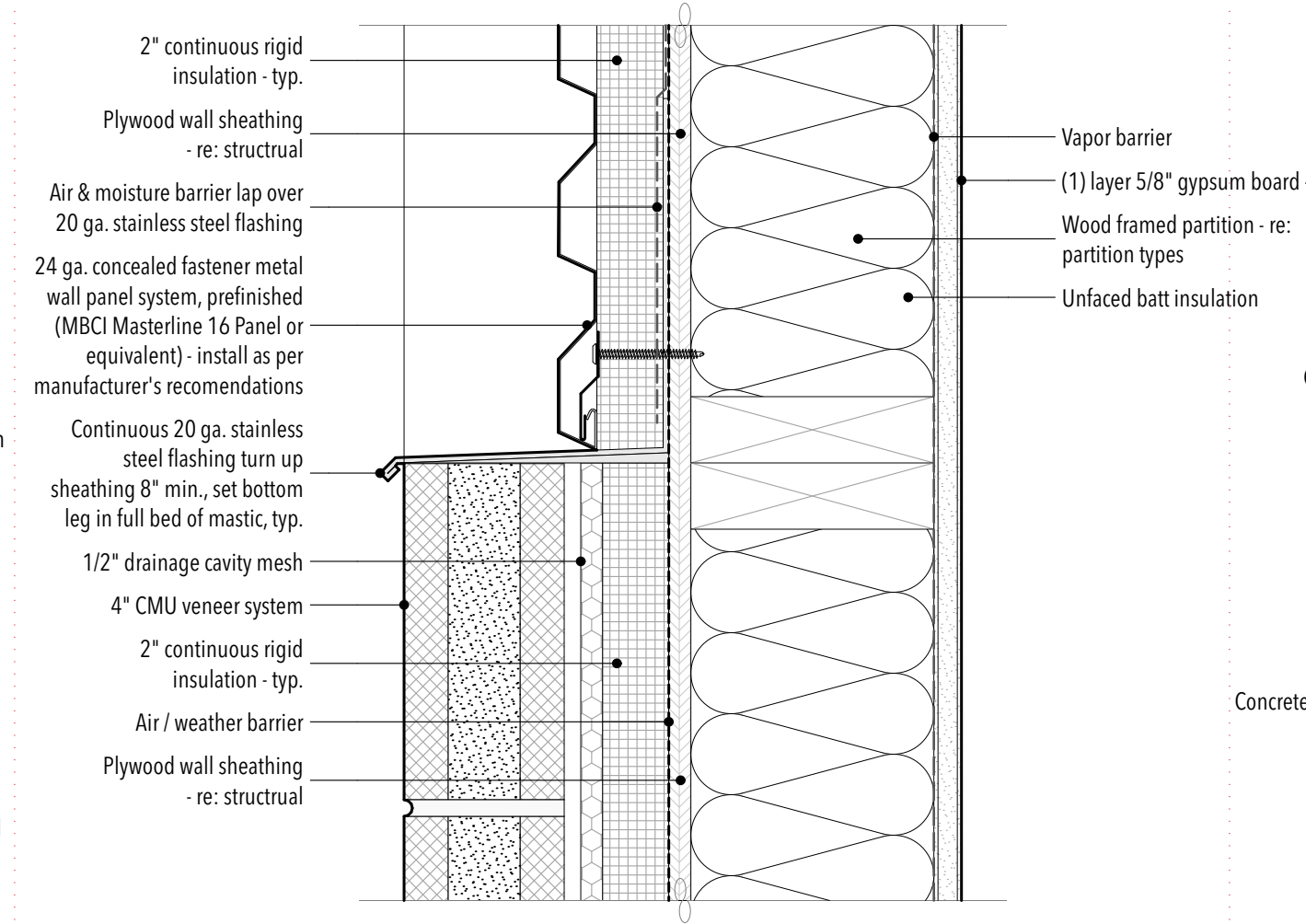


FOUNDATION DETAIL @ METAL SIDING

08 3" = 1'-0"

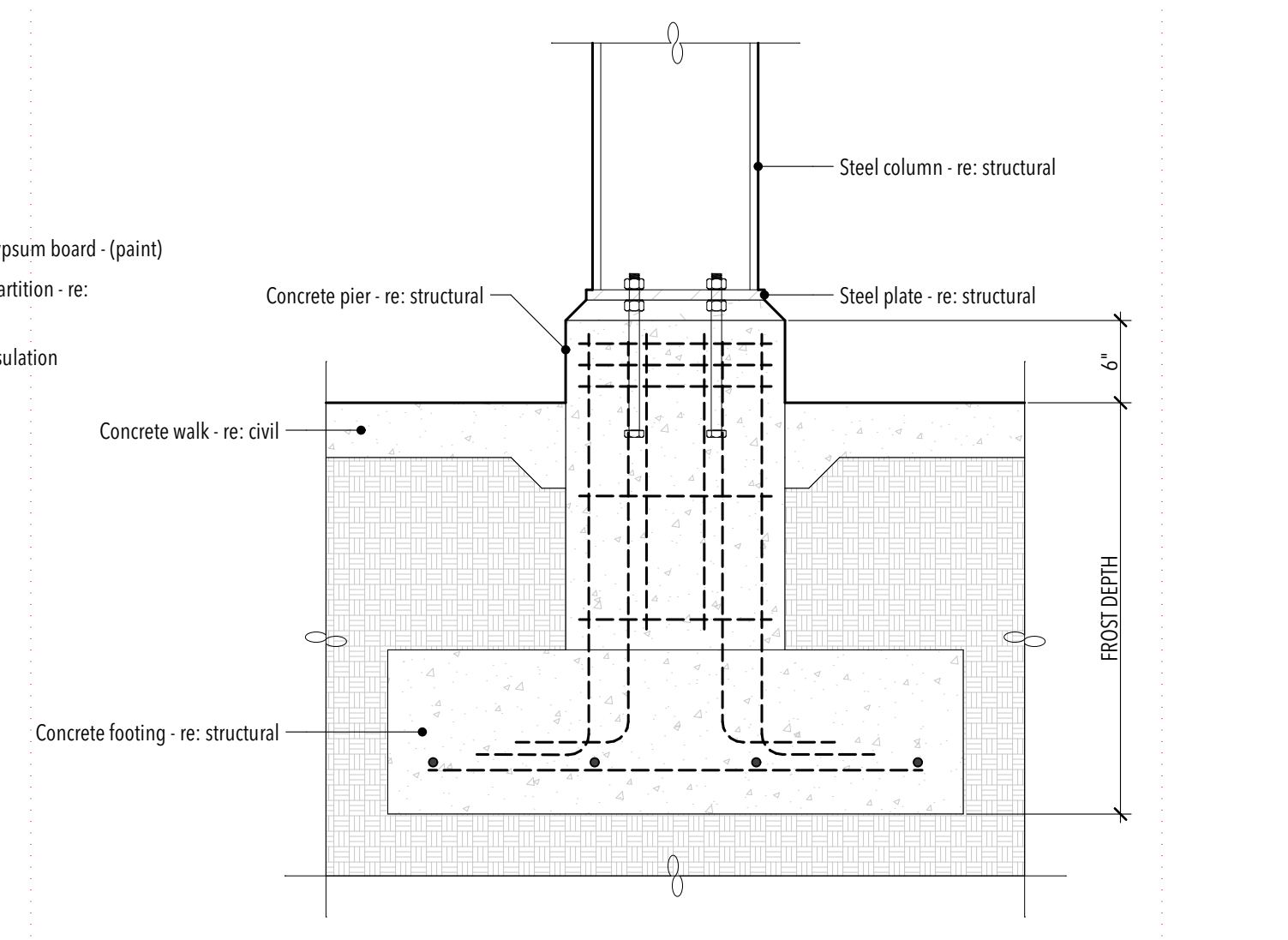
METAL SIDING DETAIL @ REVEAL TRIM

09 3" = 1'-0"



DETAIL @ CMU SILL

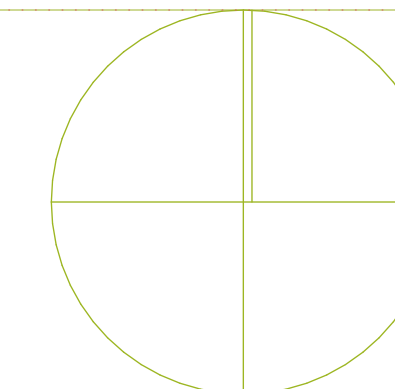
10 3" = 1'-0"

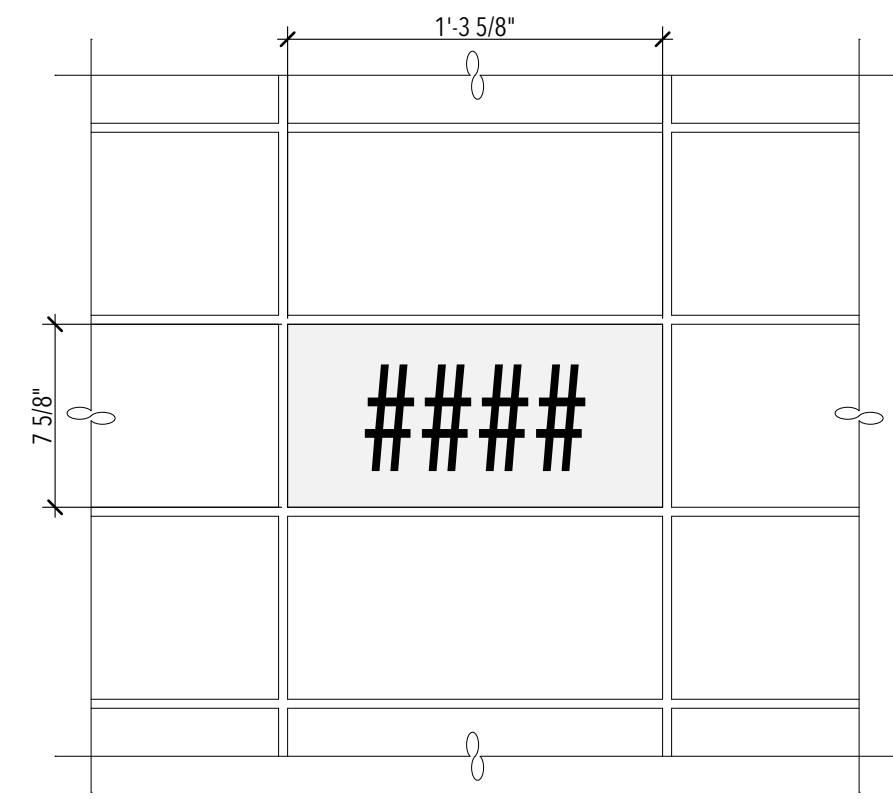


CONCRETE PIER DETAIL

11 1" = 1'-0"

NO.	DATE	DESCRIPTION

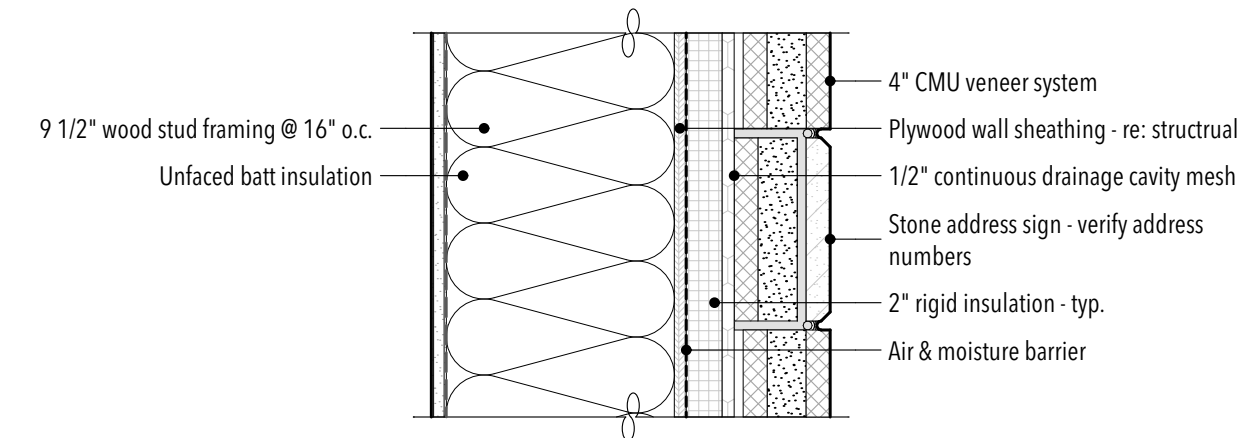




STONE ADDRESS SIGN

01

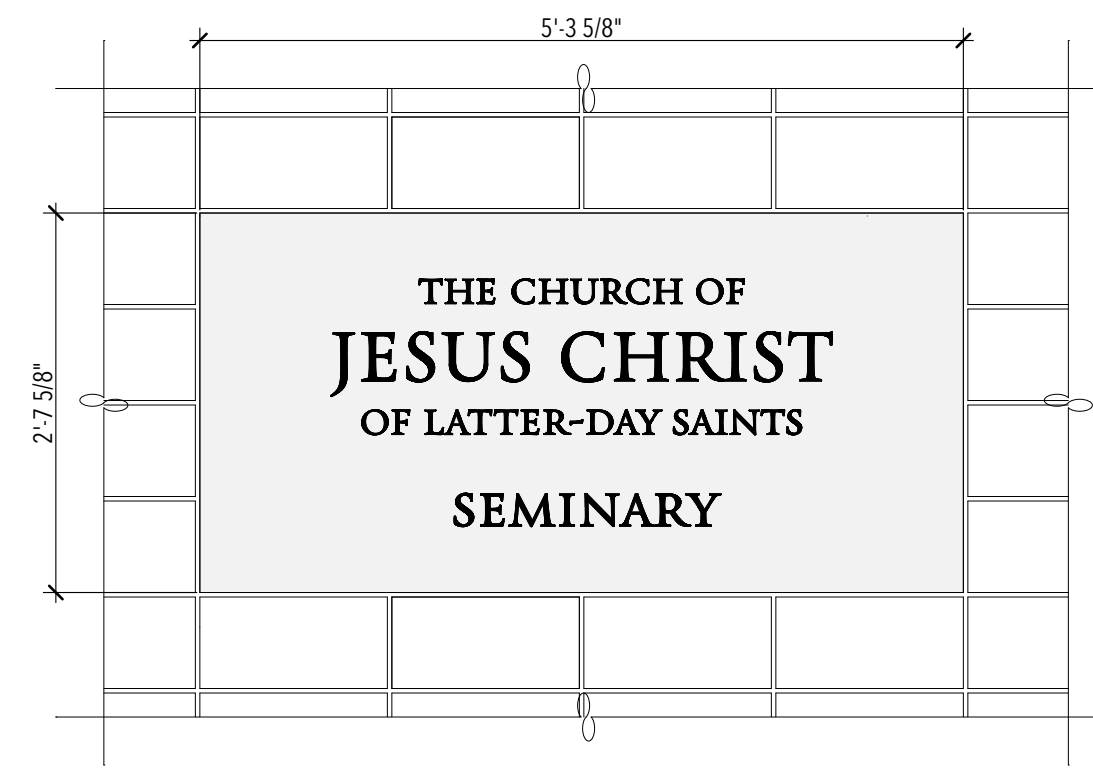
1 1/2" = 1'-0"



STONE ADDRESS SIGN SECTION

02

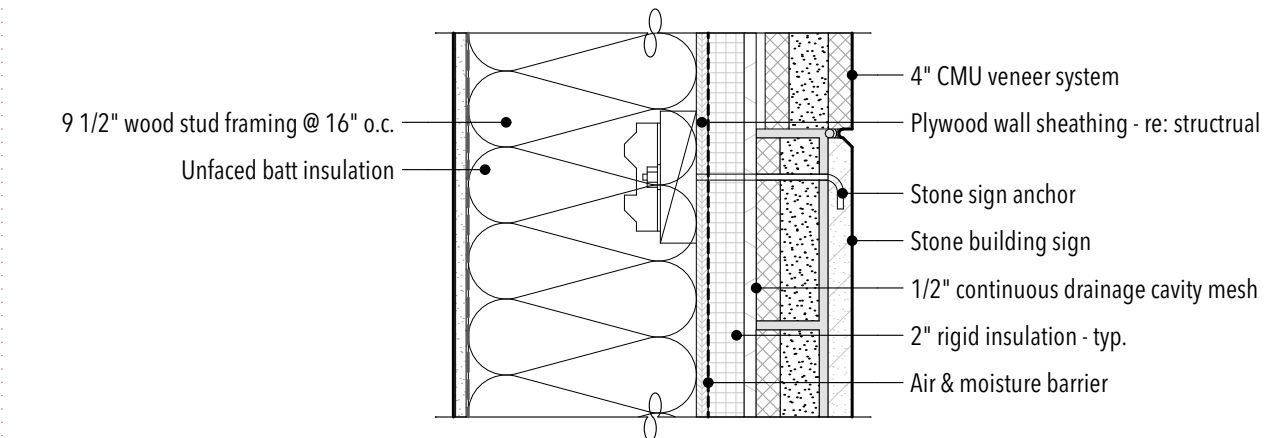
1 1/2" = 1'-0"



STONE BUILDING SIGN

03

3/4" = 1'-0"



STONE BUILDING SIGN SECTION

04

1 1/2" = 1'-0"

NO.	DATE	DESCRIPTION

