



# SPHERE

## CLUB CARD



POWERED BY:  
**MOZAIC**  
REALTY GROUP

# WELCOME

---

WE ARE SO EXCITED TO SHARE THIS  
EXCITING OPPORTUNITY WITH YOU!

# CONTENTS

OUR MISSION .....	4
WHO WE ARE .....	5
WHAT IS IT? .....	7
SERVICES .....	8
BENEFITS TO YOU .....	9
CATEGORIES .....	11
VENDOR ADVANTAGE.....	12
CLIENT ADVANTAGE .....	13
THE NEXT STEP .....	14
UNIQUE PROMOTION .....	16
WELCOME PACKAGE.....	18
TERMS OF USE .....	21

## OUR MISSION



## OUR MISSION

To become a **'Sphere' of influence for local businesses** and encourage the local, supporting local, initiative. We strive to create & maintain a **strong community connection** by:

- Supporting **local small businesses** looking to expand their customer base in their community & beyond.
- Rewarding our clients with unbeatable discounts on things they love to do through **Sphere's amazing club card program.**



Mozaic Realty Group is a **locally owned and operated company**, promoting local, supporting local!

We are **Edmonton's Top Real Estate Agents** that work together to better serve clients with any real estate needs and budget. Our team is comprised of nearly **35 Agents and Managers with over 30 years of knowledge and experience.**

We specialize in **New Construction, Resale Real Estate, and Commercial.**



WHO WE ARE

EXISTING CLIENTS &  
PARTICIPATING VENDORS  
**4000+ PAST  
HOUSEHOLDS**



**500+  
HOUSEHOLDS  
PER YEAR**

We Represent **Award Winning Builders,  
Businesses & Long Time Clients.**



## SO, WHAT IS A SPHERE CLUB CARD AND **HOW DOES IT WORK?**

### **COMMUNITY FIRST**

The Sphere Club Card provides your business with a great way to generate extra traffic and encourage new customers to remain loyal to you. This effective marketing tool will **help spread the word about your company or brand.**

Each of our past, present, and future home owners\* will be provided a Sphere Club card to access **hundreds of local businesses** that offer preferred rates on goods and services in their community.

**Each of our clients will receive a gift basket** when they take possession of their new home. These baskets will include items and/or offers from local vendors to further and **immediately promote you.**



\*One card per household.

## SERVICES

### SERVICES | SPHERE CLUB CARD

- We send monthly features & updates to our clients keeping our **vendors top of mind.**
- The club card will keep clients up-to-date with your current marketing & promotions.
- The sponsored gift baskets will be given to clients in person.

WHY IS THIS PROGRAM  
**IMPORTANT FOR YOU?**





## BENEFITS TO YOU



- **Customer Retention** – The Sphere club card program helps **build trust between you and your customers** to keep them coming back.



- **Increase Sales** – In addition to the added traffic, our club card will motivate existing customers to take advantage of special offers and promotions. This is a **win-win situation** for both your business and the customers.



- **Product Awareness** – Consumers are encouraged to try out new businesses and services at a reduced cost to them. This is where the club card is measured. For example, If they like the product they received a discount on, there is **a good possibility they will purchase it again**. Many businesses use this technique as an effective and attractive tool to gain new business. Changing the rewards from time to time will keep things fresh and inform your customers about other products.

## BENEFITS CONTINUED



- **Increased Reach** – Loyal customers who enjoy special offers, are more likely to **encourage their friends about the program and/or business.**



- **Knowing the Customers** – With the club card program, a business can keep track and analyze the shopping habits of the customers. This will help **adjust offers to match their needs.**

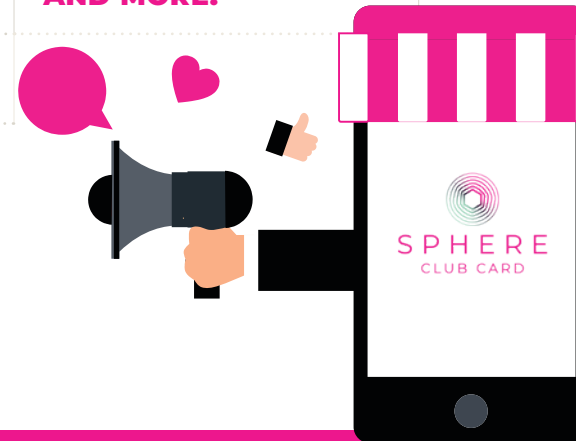


THIS PROGRAM WORKS WITH  
**WHAT CATEGORY?**



**CATEGORIES**

<b>CATEGORIES</b>	<b>SUBCATEGORIES</b>		
<b>S</b> HOPPING/ RETAIL	RESTAURANTS	COSMETICS	ROOFING
<b>P</b> ROFESSIONAL SERVICES	DENTISTS	DECKS	PLUMBING & HEATING
<b>H</b> OME	CHIROPRACTIC & PHYSIO	LANDSCAPING	TRANSPORTATION
<b>E</b> NTERTAINMENT & SPORTS	SPAS & MASSAGE	SNOW REMOVAL	AUTO REPAIR
<b>R</b> EAL <b>E</b> STATE	GYMS	GUTTER CLEANING & REPAIR	VETERINARIANS
	GOLF	ELECTRICIAN	DAYCARE
	FURNITURE & DECOR	FLOORING	INSPECTORS
	EVENT PLANNING	BLINDS	<b>AND MORE!</b>
	HAIR SALONS	LAWYERS	



**VENDOR  
ADVANTAGE**



- No cost for NEW business.
- No risk for NEW business.
- Increased local traffic.
- Exposure! Social Media, Monthly Features & Sponsored Possessions.
- Free Ad & Social Design (Coupon or Deal Info).
- No special equipment required! Your offers can be redeemed via the APP or visually inspected.
- Corporate Club card—Free for your employees too. (Maximum 2 employees).
- Bridge the gap between **local small business owners** and **new residents** to their service area.

## CLIENT ADVANTAGE



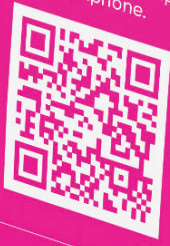
- No cost to them!
- Discounts on things they love to do!
- Offers a hassle-free method of finding **local businesses** and services.
- **Discounted rates** during these unprecedented times and when finances may be limited.
- Bridging the gap between **local small business owners** and **new residents** to their service area.



  
**SPHERE**  
CLUB CARD

**EASY. FAST. ONE APP.**

Stocard allows you to store all your loyalty cards in one single app on your smartphone.



  
**SPHERE**  
CLUB CARD





## THE NEXT STEP

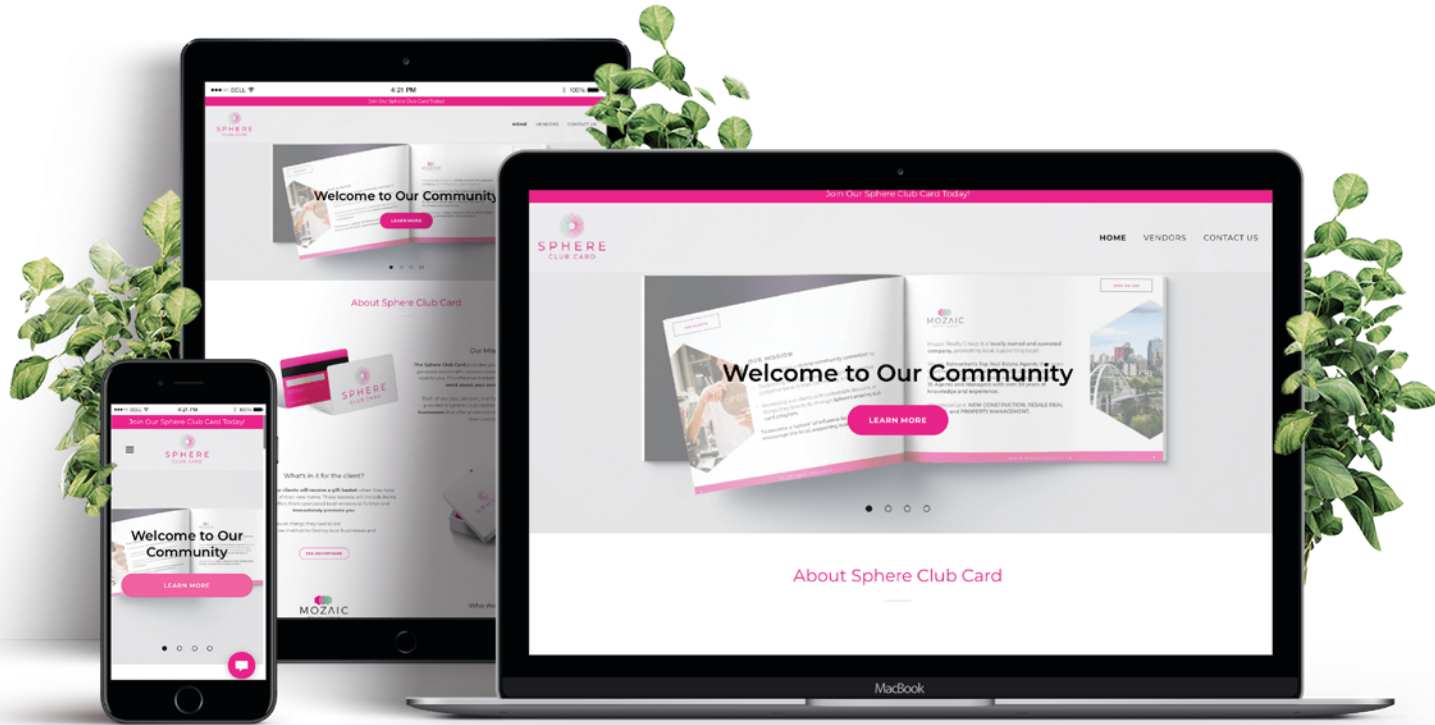
### WHAT WE NEED FROM YOU

- YOUR LOGO (VECTOR FORMAT, EPS, AI, OR PDF)
- THE OFFER
  - EITHER % OFF
  - FLAT DISCOUNT ON ONE ITEM OR MORE.

### WHAT YOU NEED FROM US

- DEAL INFORMATION
  - BRANDED TABLE TENTS AND/OR
  - BRANDED STICKERS (2)
  - SOCIAL ADS & PROMOTIONS (PDF)
- TWO COMPLIMENTARY CLUB CARDS (EMPLOYEE OR FAMILY/FRIEND)

WEBSITE





UNIQUE PROMOTION

SIGN UP NOW  
FOR A CHANCE TO  
**WIN**

THREE FREE MONTHS OF  
CO-MARKETING ON SOCIAL MEDIA



SPHERE  
CLUB CARD



COMMUNITY

Locals  
supporting  
locals.



EXPOSURE

Increased  
local traffic.



REWARDS

Connecting  
businesses  
with new  
residents.



SERVICE

Guaranteed  
Customer  
Service.

## WELCOME PACKAGE

### VENDORS WILL RECEIVE: (IN A NICE ENVELOPE)

- 5 TABLE TENTS
- 5 STICKERS
- 5 KEYCHAINS
- 5 PENS
- VOUCHERS FOR A CLUB CARD FOR YOUR TEAM/EMPLOYEES (MAX 2)

COMPATIBLE WITH:



### CLIENTS WILL RECEIVE:

- CARD
- 2 KEY TAGS
- 2 PENS
- 2 STICKERS
- 2 KEY CHAINS



TOUCHPOINTS



# TERMS OF USE

**Read each offer carefully for any conditions, restrictions and exclusions.**

**When an offer has additional stated conditions, those conditions supersede the Terms of Use.**

- Present your club card in person or on your phone to a participating merchant at the time of payment.
- The merchant will verify the club card. You will be asked to show your phone when redeeming through the APP.
- Discounts exclude tax, tip and/or alcohol unless expressly stated otherwise.
- Club cards automatically renew January 1 of the following year.
- Offers are not valid with other discounts and are non-transferable.
- One Club Card, or mobile device offer is limited 1 per household.
- Offers are subject to the maximum dollar value stated. The least expensive item(s), up to the maximum value stated, will be deducted from your bill, or you will receive a percentage off the designated item(s), up to the maximum value stated.
- For restaurants offering a complimentary “menu item” when a second is purchased, a “menu item” is a main course or entrée item.
- Please check with the Vendor regarding other regional or local holidays that might be excluded.
- SPHERE Club Cards are: non-refundable, non-transferable and have NO CASH VALUE.



POWERED BY:  
**MOZAIC**  
REALTY GROUP