



EICHHOLTZ

EST. 1992

FURNITURE

LIGHTING

ACCESSORIES

Introducing the new collection

CELEBRATING
the ART of
MAKING



EICHHOLTZ

EST. 1992

EICHHOLTZ

GALLERY AMSTERDAM

Opening of a new Eichholtz experience



EICHHOLTZ.COM | EICHHOLTZUSA.COM

FOLLOW US AT @WORLD OF EICHHOLTZ

Store locator



FIND THE CLOSEST STORE TO YOU USING
OUR STORE LOCATOR

Gallery Amsterdam

MUSEUM QUARTER | PIETER CORNELISZ HOOFDSTRAAT 1
1071 CB AMSTERDAM, THE NETHERLANDS



Scan the QR code to discover our latest collection



EICHHOLTZ.COM



EICHHOLTZUSA.COM



A NEW MOOD FOR THIS SEASON

CARPET LIMITLESS
IVORY | BROWN | HAND KNOTTED
100% WOOL | 300 X 400 CM



TABLE LAMP COOSA
BRONZE FINISH



CHAIR THOMPSON
LYSSA SAND | BRUSHED
BRASS FINISH LEGS



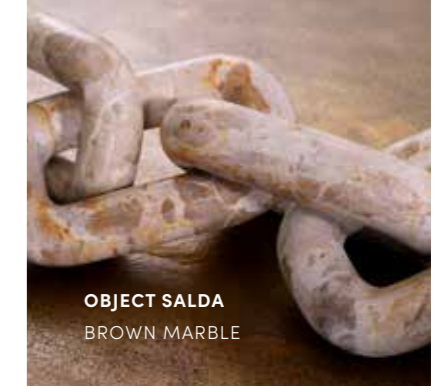
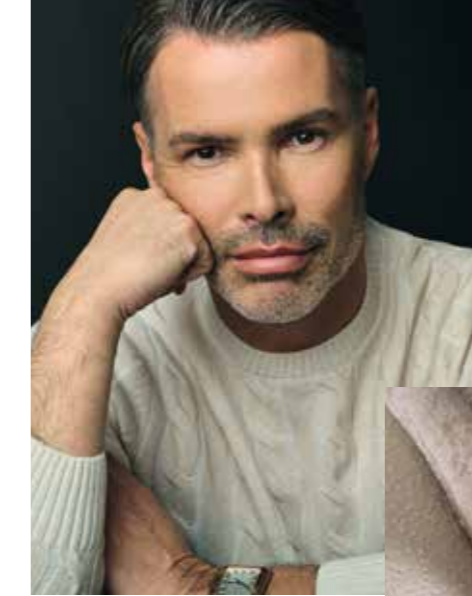
TORSO ARISTO
ANTIQUE BRONZE FINISH | MARBLE BASE

CARPET ZENON
IVORY | HAND TUFTED | 300 X 400 CM

FROM THE RICH, *earthy color*
PALETTE TO BEAUTIFULLY
textural MATERIALS, THERE'S A
RENEWED FOCUS ON NATURE
AND *handcraft* THIS SEASON.



HEAD DAVID
WHITE MARBLE



OBJECT SALDA
BROWN MARBLE

Global Creative Director
Edwin van der Gun
introduces an
elegant *fresh* look
for this season.

At Eichholtz we're feeling a great sense of revitalization and optimism. Our creative team has travelled more during the past year to not only feed our senses but spend much needed time with the skilled craftspeople with whom we collaborate.

Reconnecting with our artisanal origins as set out by the founder Theo Eichholtz feels like recapturing the essence of who we are. That means working closely with our trusted partners who always go that extra mile when exploring handcrafted techniques and material combinations to achieve the authenticity, warmth and modern, luxury design excellence customers expect from Eichholtz.

For this season, our carefully curated collection is an homage to those long-held skills of the artisans we work with that include weaving, hand-loomed, carving wood and milling travertine and marble. You'll note that our textures feel quite raw and from nature, such as rough-hewn stone in accessories and tableware, the deeply tactile knotted rope seating on teak chairs, and the luxuriously textural depth of our rug collection. Distinctive handmade art pieces such as hand-finished bronze or marble sculptures and decorative wall-panels play an important role as does the soft feminine feel of the more curvilinear pieces such as our new collection of dining tables. Silhouettes in the larger furniture pieces take on a more organic freeform too, such as the modular sofas, more ostentatiously proportioned.

Ultimately, with this collection we bring you closer to nature and a triumphant return to the great joy and skill of handcrafted luxury design and celebrating the talented artists who make it. We couldn't be prouder of what we've created and hope you love the collection as much as we do.

Edwin van der Gun

GLOBAL CREATIVE DIRECTOR





SCAN THE QR-CODE WITH THE CAMERA ON YOUR MOBILE PHONE TO GET INSPIRED BY THE PHILIPP PLEIN HOME COLLECTION.



EICHHOLTZ.COM



EICHHOLTZUSA.COM




PHILIPP PLEIN
HOME COLLECTION



WE BRING YOU THE HIGH *voltage*
AND *extravagant* WORLD OF THE
PHILIPP PLEIN HOME COLLECTION

VISIT OUR WEBSITE TO DISCOVER THE COLLECTION



WITH TECHNIQUES PASSED
DOWN THE GENERATIONS
ARTISANAL TRADITIONS
THAT PAY HOMAGE TO THE
SKILLED MAKERS WHO
CREATE TIMELESS DESIGNS
FORM THE FOUNDATION OF
THIS COLLECTION.

BOWL LIZZ L BROWN MARBLE

NATURAL BEAUTY

Traditional hand-loomed, hand-knotted, and woven techniques bring a depth, elegance, and tactility to the new Eichholtz rug collection.

This season's fine quality, handcrafted rugs become future heirlooms.

BE INSPIRED BY THE COMPLETE COLLECTION ON OUR WEBSITE







“EXPLORING *texture*,
LAYERING AND SUMPTUOUS
MATERIALITY THROUGH THIS
NEW RUG COLLECTION
feels LIKE THE ULTIMATE
EXPRESSION OF THE
EICHHOLTZ BRAND.”

“WE TAKE A DEEP DIVE
INTO THE *beauty* OF
CRAFTSMANSHIP WITH OUR
LATEST COLLECTION OF
RUGS. EACH PIECE TELLS
A *story* OF TECHNIQUE,
TRADITION, AND SKILL.”

EDWIN VAN DER GUN, GLOBAL CREATIVE DIRECTOR

The rug collection is characterized by the lush, warm tones and textures of nature. Each luxurious piece has been created using time-honored traditions of hand-knotting, hand-loomed, and weaving in beautifully soft wools and wool blends that feel plush underfoot. In collaboration with our master craftspeople in India and Indonesia, these are the products that will last a lifetime, made with care, precision, and authenticity, and designed with our signature timeless elegance.

CARINTHIA

HAND WOVEN WOOL



200 X 300 CM | 300 X 400 CM
BEIGE BROWN

VAVA

HAND WOVEN WOOL

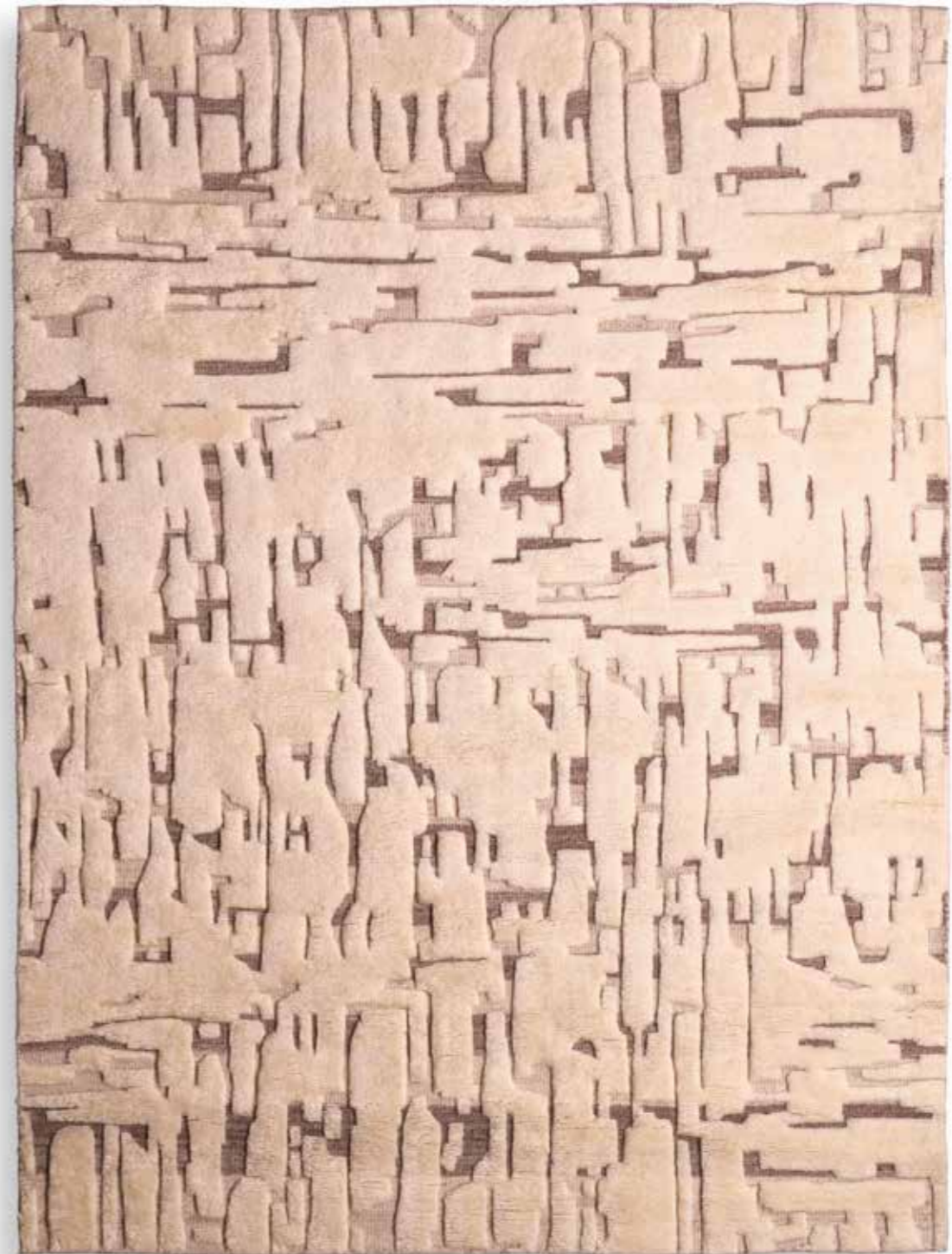


200 X 300 CM | 300 X 400 CM
BLACK IVORY



EMINENCE

HAND KNOTTED WOOL



200 X 300 CM | 300 X 400 CM

IVORY BROWN



RAW TEXTURAL FINISHES INSPIRED BY NATURE

- 1. CARPET TALITHA BLACK | IVORY 2. CUSHION AMPHION S IVORY | HAND WOVEN | NEW ZEALAND WOOL 3. CHAIR TOTO LYSSA SAND 4. CHAISE LONGUE UDINE LYSSA OFF-WHITE | BLACK FEET
- 5. CHANDELIER BERMAUDE ANTIQUE BRASS FINISH | CLEAR GLASS 6. STOOL SCHILLINGER IVORY | HAND WOVEN 7. DESK ACCESSORY VISA WHITE MARBLE 8. COFFEE TABLE PRELUDE WASHED FINISH
- 9. SOFA SIDNEY NUORO BEIGE | BLACK FEET







LAYERING *Textures* FOR *this* SEASON

1. **CHANDELIER EOS** ANTIQUE BRASS FINISH | ALABASTER 2. **HEAD HEROS** ANTIQUE BRONZE FINISH | MARBLE BASE 3. **WALL OBJECT AZUREA** BRONZE FINISH
 4. **BOWL REVOLT** BROWN MARBLE 5. **DRESSER DENVER** MOCHA OAK VENEER | BRUSHED BRASS FINISH LEGS 6. **COFFEE TABLE LINDNER** NATURAL OAK VENEER
 7. **BOWL AVANCE** HAND BLOWN GLASS | SAND COLOUR 8. **VASE AVANCE L** HAND BLOWN GLASS | SAND COLOUR 9. **CHAIR THOMPSON** FAUX SHEARLING | BRUSHED BRASS FINISH LEGS

DESIGN TO LAST A LIFETIME

From the timelessness of marble, stone, wood,
and bronze, forever luxury takes on new meaning.

BE INSPIRED BY THE COMPLETE COLLECTION ON OUR WEBSITE



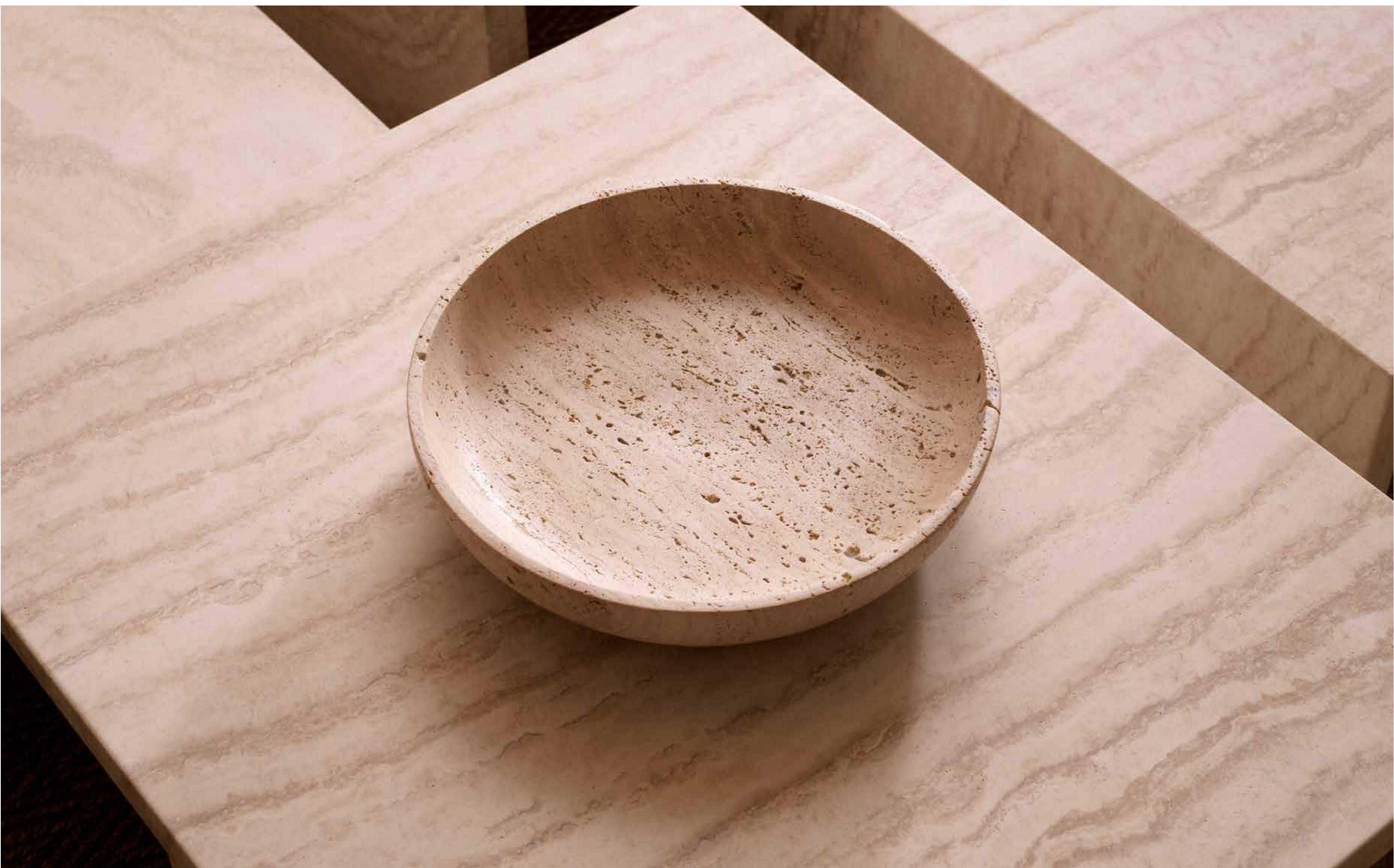




SOFT *Neutrals* AND *Organic* FORMS

1. **MIRROR RODION** BRONZE FINISH 2. **PICTURE FRAME CASALE S** TRAVERTINE | CLEAR GLASS 3. **OBJECT ERAS** BROWN MARBLE 4. **TABLE LAMP MELIA** ALABASTER 5. **PLAID ZERA** OFF WHITE | GREIGE | 90% WOOL | 10% CASHMERE 6. **TORSO AGATHOS** ANTIQUE BRONZE FINISH | MARBLE BASE 7. **CHANDELIER SPHINX** ANTIQUE BRASS FINISH | ALABASTER 8. **SWIVEL CHAIR PHEDRA** LYSSA SAND | BRUSHED BRASS FINISH SWIVEL BASE 9. **VASE NAVA** BROWN MARBLE 10. **SOFA RESIDENZA** LYSSA SAND 11. **COFFEE TABLE PRELUDE** TRAVERTINE







THE ALLURE OF TEAK

With its natural characteristics that make it highly durable and water repellent, we showcase the beauty and strength of teak as a key material for indoor and outdoor furniture.

Presenting handcrafted teak furniture harvested from sustainably managed forests in Indonesia.

[DISCOVER MORE ABOUT THE OUTDOOR COLLECTION ON OUR WEBSITE](#)



THOUGHTFUL ARTISTRY

Traditional techniques of intricately handweaving rope cord over a wooden frame brings not only superior comfort to seating but an understated style and stability that will last.

DRAWING ON DESIGN INSPIRATION
FROM *vintage* CLASSICS, THIS
SEASON'S NEW SEATING FEELS AT
ONCE ARCHITECTURAL, BEAUTIFULLY
SIMPLE AND STEEPED IN FINE *craft*.



VISION OF THE FOUNDER

“Our outdoor collections take *design cues* from our most *popular* indoor furniture pieces. That means great attention to detail in materials, craft, and finish.”



CHAIR HERA
NATURAL TEAK |
FLORES OFF-WHITE

DINING CHAIR HERA
NATURAL TEAK |
FLORES OFF-WHITE



THEO EICHHOLTZ
Company Founder &
Chief Creative Officer

“Silhouettes are more *freeform*, and proportions are bigger. This will be the year for entertaining *outside*.”



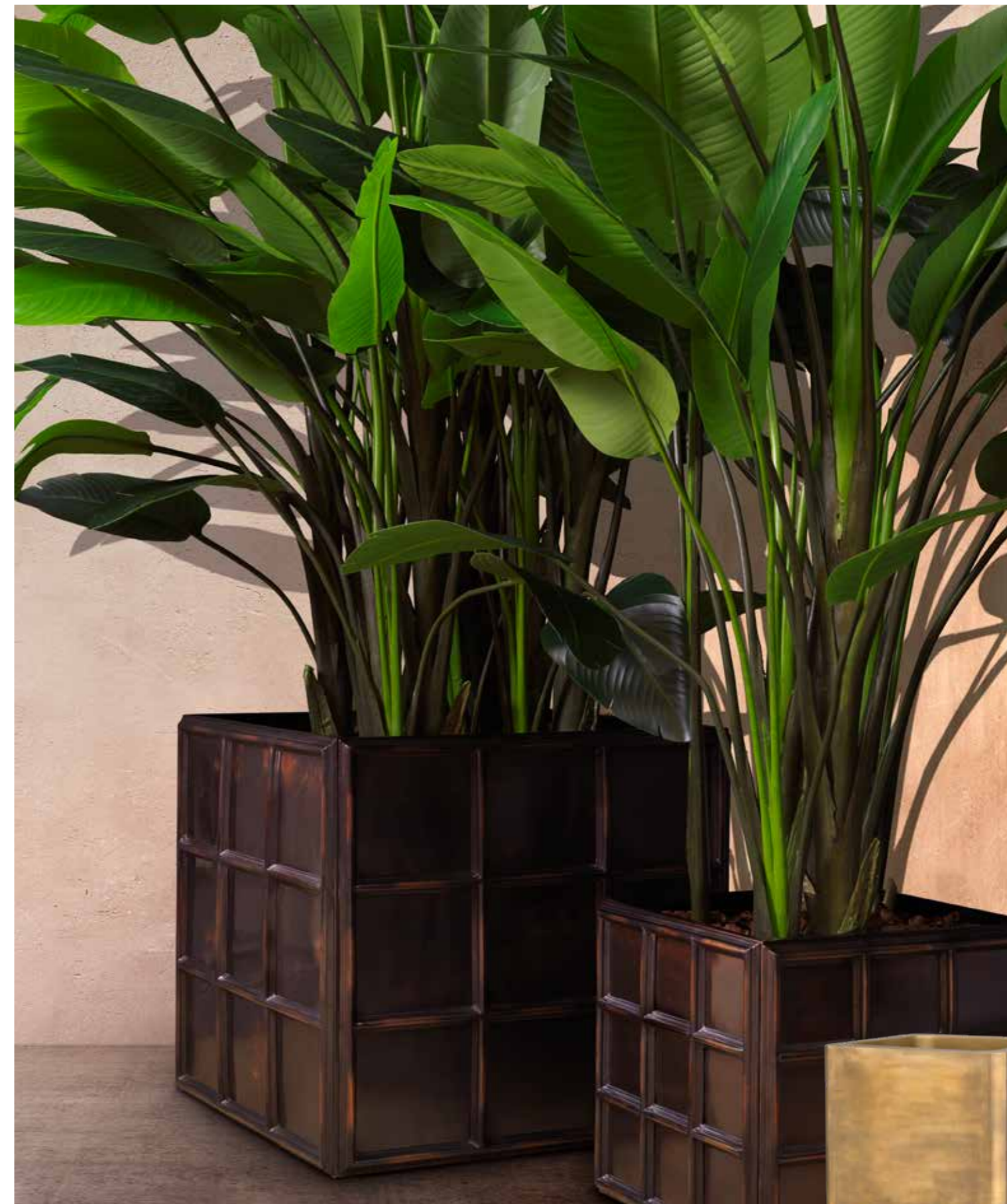
TAKING *Craftsmanship* OUTDOORS

1. **DINING CHAIR KRISTO** NATURAL TEAK | BLACK WEAVE 2. **DINING CHAIR GRIFFIN** NATURAL TEAK | NATURAL WEAVE 3. **SOFA MANZO** NATURAL TEAK | FLORES OFF-WHITE 4. **COFFEE TABLE ANJUNA** NATURAL TEAK 5. **DINING CHAIR KRISTO** NATURAL TEAK | NATURAL WEAVE 6. **DINING CHAIR HERA** NATURAL TEAK | FLORES OFF-WHITE



WHERE *Indoor/Outdoor* DESIGN MEETS

- 1. CHAIR MANZO CLASSIC BLACK FINISH | BOUCLÉ GREY 2. COFFEE TABLE CLEON OFF-WHITE 3. SOFA LAGUNO SAND FINISH | LEWIS OFF-WHITE/GREY
- 4. COFFEE TABLE LAGUNO SAND FINISH 5. BASKET PAPAYA L NATURAL JUTE 6. BASKET NIKKO S NATURAL JUTE 7. OUTDOOR CARPET LORIANO TAUPE | HAND WOVEN | 90% RECYCLED PET 8. OUTDOOR CARPET ROMARI BEIGE | HAND WOVEN | 90% RECYCLED PET 9. CHAIR MANZO OUTDOOR NATURAL TEAK | FLORES OFF-WHITE
- 10. COFFEE TABLE MATIZ WHITE HIGH GLOSS 11. SOFA LIBERO ROUND BROWN ASH WOOD | FIDENZA OFF-WHITE



PLANTER GRID L
ANTIQUE BRONZE FINISH
79 X 79 X H. 71,5 CM | 31.1" X 31.1" X 28.15" H

PLANTER GRID S
ANTIQUE BRONZE FINISH
52,5 X 52,5 X H. 47 CM | 20.67" X 20.67" X 18.5" H

PLANTER JASPER SQUARE XS
VINTAGE BRASS FINISH | BLACK BASE
60 X 60 X H. 35,5 CM | 23.62" X 23.62" X 13.98" H

PLANTER JASPER SQUARE HIGH
VINTAGE BRASS FINISH | BLACK BASE
70 X 70 X H. 100 CM | 27.56" X 27.56" X 39.37" H



CREATING SOFTER FORMS



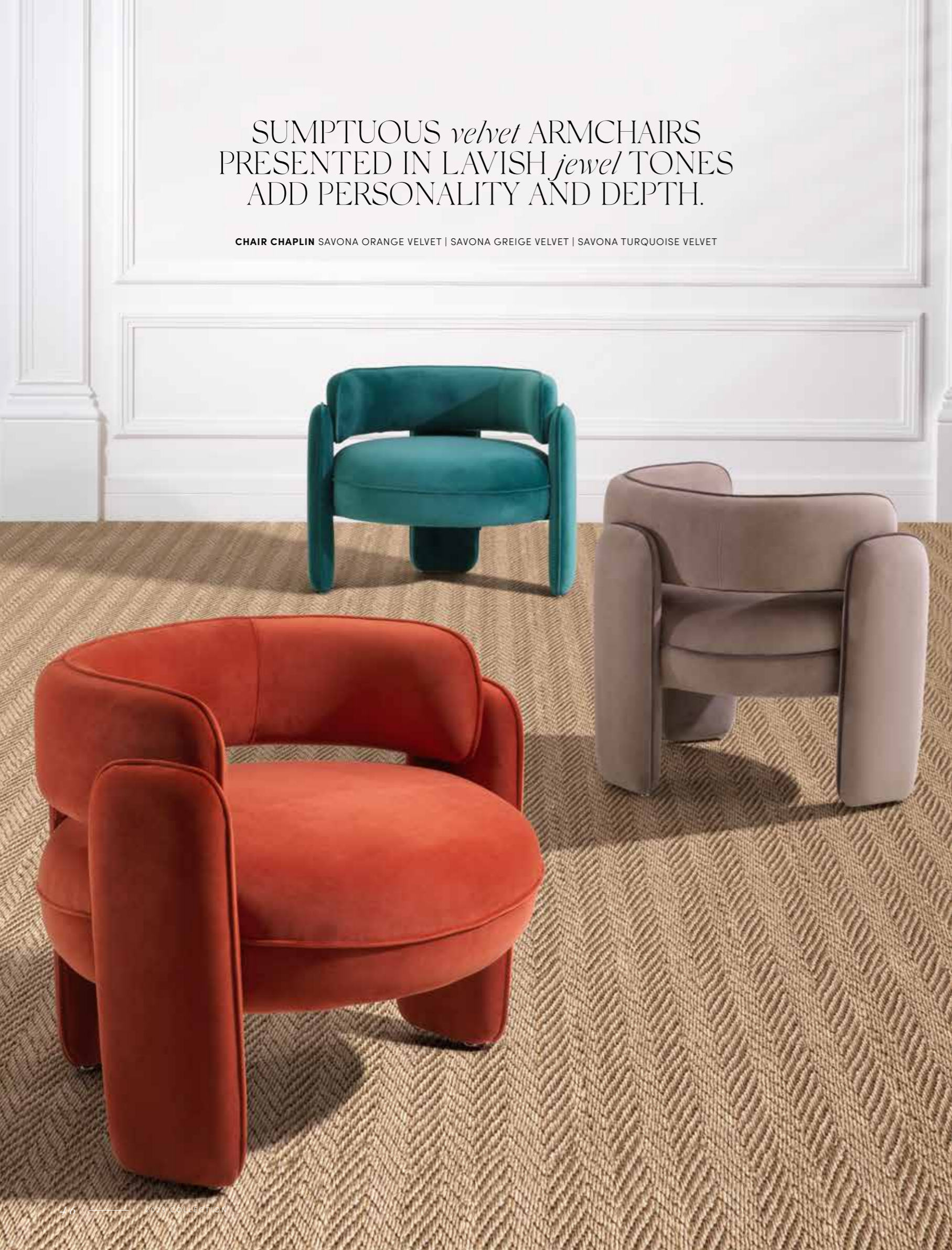
This season there is an increased focus on the return to entertaining with extravagant proportions and rich textures in upholstered pieces and occasional tables.

- 1. **CARPET NIRVANA** BLACK & IVORY | HAND KNOTTED | 100% WOOL
- 2. **FLOOR LAMP NOVENTO** ANTIQUE BRASS FINISH | WHITE GLASS | BLACK BASE
- 3. **SOFA FIRENZE** LYSSA SAND | BLACK LEGS
- 4. **CHANDELIER ORIENTAL** VINTAGE BRASS FINISH | WHITE LINEN SHADE
- 5. **VASE LARISA** HAND BLOWN GLASS | BROWN COLOR
- 6. **COFFEE TABLE OTUS SQUARE** EUCALYPTUS HIGH GLOSS VENEER | BRONZE FINISH
- 7. **COFFEE TABLE OTUS ROUND** EUCALYPTUS HIGH GLOSS VENEER | BRONZE FINISH
- 8. **SOFA XYLON** ATTESSO BEIGE
- 9. **COFFEE TABLE ORACLE** HIGH GLOSS MAPLE VENEER | BRUSHED BRASS FINISH
- 10. **CHAIR DONATO** BRUSHED BRASS FINISH | BOUCLÉ CREAM
- 11. **ARTE ESSENTIALS** TANGRAM SPLICE TOFFEE



SUMPTUOUS *velvet* ARMCHAIRS
PRESENTED IN LAVISH *jewel* TONES
ADD PERSONALITY AND DEPTH.

CHAIR CHAPLIN SAVONA ORANGE VELVET | SAVONA GREIGE VELVET | SAVONA TURQUOISE VELVET



CHAIR CHAPLIN
SAVONA TURQUOISE VELVET



THE JOY OF COLOR

With a foundation palette of soft, muted shades, adding brighter hues to the mix inspired by the natural beauty of gemstones builds an elevated opulence.

“COLOR, PATTERN, AND TEXTURE TAKE THIS COLLECTION TO A *new level* OF LUXURY. WE’RE FOCUSED ON ROUNDER SILHOUETTES, GRANDER SCALE AND A *rich* PALETTE OF MATERIALS AND TONES, WHICH FEEL *inviting* AND SOPHISTICATED.”

Edwin van der Gun

EDWIN VAN DER GUN | GLOBAL CREATIVE DIRECTOR



LUXURIOUS STATEMENT PIECES

- 1. CUSHION DORIS S ORANGE | DARK ORANGE FRINGE 2. CUSHION DORIS L BLUE | DARK BLUE FRINGE 3. CUSHION DORIS L GREEN | DARK GREEN FRINGE
- 4. CHAIR CHAPLIN SAVONA ORANGE VELVET 5. DINING CHAIR MASTERS CLARCK SAND | BLACK FINISH SWIVEL BASE 6. BOWL MOOD ORANGE SWIRL
- 7. VASE BLOOM HAND BLOWN GLASS | BLUE COLOR 8. SIDE TABLE MATIZ WHITE HIGH GLOSS 9. BENCH OXLEY SAVONA ORANGE VELVET | BRUSHED BRASS FINISH LEGS 10. SIDE TABLE TIGRA BRONZE FINISH 11. CHAIR MORTENSEN NUORO BEIGE | BLACK FINISH 12. CARPET SCHILLINGER IVORY | HAND WOVEN | 85% WOOL | 12% COTTON 13. PLAID ZERA FBLUE | OFF-WHITE | 90% WOOL | 10% CASHMERE

PLAID RHODA
LIGHT BROWN | CAMEL



CUSHION RHODA S
LIGHT BROWN | CAMEL



There is comfort and understated luxury in the *softness* and *elegance* of woven throws. Hand-finished in wool and wool blends, presented in rich tones of the *earth*, each piece creates new interest to the design of a room.



PLAID ZERA
OFF-WHITE



The GENTLE TOUCH

WOOL & CASHMERE FABRICS

- 1. PLAID RHODA ORANGE 2. PLAID ZERA OFF-WHITE | GREIGE 3. CUSHION RHODA L ORANGE 4. CUSHION ZERA S GREIGE | OFF-WHITE 5. CUSHION THANA S OFF-WHITE | GREIGE | SAND 6. CUSHION RHODA L GREY | DARK GREY 7. PLAID RHODA GREY | DARK GREY 8. CUSHION ZERA S OFF-WHITE | BLUE 9. CUSHION ZERA L BLUE | OFF-WHITE





LAYERING TEXTURES IN *neutral*
TONES WITH ACCENTS OF WOOD
AND METALLICS FEELS AT ONCE
contemporary AND TIMELESS.
PROPORTIONS TOO ARE
EXTRAVAGANT AND CREATE
AN *ambience* OF CONVIVIALITY.

CREATING THE SOFTTEST GLOW

Lighting this season feels pared back in its design and materiality. Metallics are muted and refined materials including alabaster and hand-blown glass feature throughout the collection.

BE INSPIRED BY THE COMPLETE COLLECTION ON OUR WEBSITE



VINTAGE INSPIRED

With undertones of 1960s and 70s classic design, lighting feels right for modern luxury living.

TIMELESS DESIGN

1. CHANDELIER ARAM ANTIQUE BRASS FINISH | WHITE GLASS 2. TABLE LAMP CHÂTEL BRONZE HIGHLIGHT FINISH | ALABASTER
3. CHANDELIER SANKT GALLEN S ALABASTER | BRONZE HIGHLIGHT FINISH 4. TABLE LAMP CHAMONIX ANTIQUE BRASS FINISH | ALABASTER
5. TABLE LAMP ARION BRONZE HIGHLIGHT FINISH | ANTIQUE BRASS FINISH 6. TABLE LAMP VOLO GUNMETAL FINISH | GOLD FINISH
7. TABLE LAMP SANTORO VINTAGE BRASS FINISH 8. TABLE LAMP STILLA ANTIQUE BRASS FINISH | CRYSTAL GLASS



THIS SEASON CHANDELIERS ARE TAKEN TO THE MAX HAVING BEEN REIMAGINED IN *fabulously* DECADENT PROPORTIONS. THESE ARE THE ULTIMATE STATEMENTS IN DESIGN AND *craftsmanship*. WITH EACH ELEMENT *handblown* WITH CARE AND PRECISION.

Glamour leads the way with the Eichholtz collection of chandeliers. Taking design cues from showstopper vintage lights, the Chandelier Saint Roch and Chandelier Greyson work in contemporary settings with the attention to detail of the handblown glass elements in smoke or clear glass as well as an unexpectedly grand scale. Each piece is fabricated around its metal tiered structure crafted in light or antique brushed brass finish for a truly luxe appeal.

SAINT ROCH

Ø 116 X H. 153 CM | 45.67' DIA X 60.24' H



CHANDELIER SAINT ROCH XXL
LIGHT BRUSHED BRASS FINISH | SMOKE GLASS

GREYSON

Ø 114 X H. 141 CM | 44.88' DIA X 55.51' H



CHANDELIER GREYSON XXL
ANTIQUE BRASS FINISH | HAND BLOWN GLASS





“WE’VE PLAYED WITH THE *scale AND proportions* OF DINING TABLES THIS SEASON TO GET AWAY FROM ANYTHING THAT FEELS TOO WORKPLACE. THE SOFT FORMS MAKE THESE PIECES FEEL ESPECIALLY *elegant.*”

EDWIN VAN DER GUN, GLOBAL CREATIVE DIRECTOR

The new dining table series has been designed to complement our extensive dining chairs collection. Therefore, we’ve created over 30 new tables in beautifully rich timbers, smooth stucco, marble, travertine, and glass. Silhouettes are freeform and more organic while table legs feel more sculptural.



STRUCTURE *and* FORM

1. DINING TABLE ASTRO NATURAL OAK VENEER | MEDIUM BRONZE FINISH 2. DINING TABLE BERGMAN L CHARCOAL GREY OAK VENEER
3. DINING CHAIR PERCY BOUCLÉ CREAM | BLACK FINISH 4. COFFEE TABLE BERGMAN CHARCOAL GREY OAK VENEER 5. DINING TABLE BERGMAN S
CHARCOAL GREY OAK VENEER 6. DINING CHAIR CAMPUS SISLEY BEIGE | BLACK FINISH LEGS 7. DINING TABLE FLEMINGS NATURAL OAK VENEER

MODESTO

180 X 80 X H. 76 CM | 70.87' X 31.5' X 29.92' H



DESK MODESTO

MOCHA OAK VENEER | BRUSHED BRASS FINISH

JULIUS

240 X 100 X H. 76 CM | 94.49' X 39.37' X 29.92' H



DINING TABLE JULIUS

MOCHA OAK VENEER | MEDIUM BRONZE FINISH

STYLING YOUR WAY

SHARE YOUR EICHHOLTZ FAVORITES WITH US

Seeing how our clients curate their Eichholtz furniture is a constant source of joy and inspiration for us. Now you can inspire others by sharing your photographs on Pinterest and Instagram using the hashtags **#Worldofeichholtz** or **#Eichholtz** for the chance to be featured on our social media channels.



FOLLOW EICHHOLTZ ON INSTAGRAM
@WORLDOFEICHHOLTZ

EICHHOLTZ GALLERY MIAMI

Opening of a new Eichholtz experience



EICHHOLTZMIAMI.COM | INFO@EICHHOLTZMIAMI.COM

FOLLOW US AT @WORLDOFEICHHOLTZ

Store locator

Gallery Miami



FIND THE CLOSEST STORE TO YOU USING
OUR STORE LOCATOR

DESIGN DISTRICT | 3711 NE 2ND AVE MIAMI, FLORIDA
EICHHOLTZMIAMI.COM

THERE ARE SOME PRODUCTS FEATURED
IN THIS MAGAZINE THAT ARE *not* AVAILABLE IN
THE US. IF YOU HAVE ANY QUESTIONS,
PLEASE *contact* A MEMBER OF OUR *sales* TEAM.

To discover if a product is available in your country,
please visit our website for more information.



CREATE A BUSINESS ACCOUNT

Eichholtz is a business to business wholesale company for luxury furnishings, lighting and accessories. Request an account to start browsing over 4000 available items.

NOT A BUSINESS PROFESSIONAL?

Find an Eichholtz store near you by using the store locator on our website.

EICHHOLTZ.COM




EICHHOLTZUSA.COM

Phone: +31 (0)252 515 850

Phone: 001 (336) 886-1142

Email: info@eichholtz.com

Email: info@eichholtzusa.com

 /EICHHOLTZBV
 /WORLDOFEICHHOLTZ
 /EICHHOLTZ

PLEASE NOTE THAT SOME ITEMS IN THIS MAGAZINE MAY HAVE BEEN DISCONTINUED OR TAKEN OUT OF PRODUCTION. PRICES, COLORS AND/OR COMPOSITION OF OUR PRODUCTS MAY CHANGE OVER TIME. WE RECOMMEND A VISIT TO OUR WEBSITE FOR AN UP-TO-DATE VERSION OF OUR COLLECTION AND PRICE LIST.

© 2023 EICHHOLTZ B.V. ALL RIGHTS RESERVED. NO PART OF THIS PUBLICATION MAY BE REPRODUCED, STORED IN A RETRIEVAL SYSTEM, OR TRANSMITTED IN ANY FORM OR BY ANY MEANS, ELECTRONIC, MECHANICAL, PHOTOCOPYING, RECORDING OR OTHERWISE, WITHOUT PRIOR WRITTEN CONSENT OF EICHHOLTZ B.V.



EICHHOLTZ B.V. - P.O. BOX 23 | 2160 AA, LISSE | THE NETHERLANDS
DELFWEG 52 | NOORDWIJKERHOUT | THE NETHERLANDS

OUR GENERAL CONDITIONS ARE AVAILABLE ON OUR WEBSITE WWW.EICHHOLTZ.COM



E I C H H O L T Z

EST. 1992

EICHHOLTZ.COM

EICHHOLTZUSA.COM