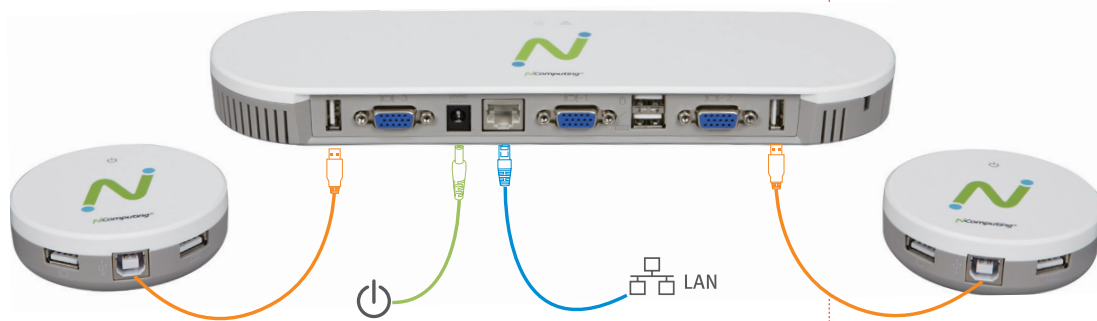


4c Connect MX100 devices

USB cables must be connected as illustrated below.



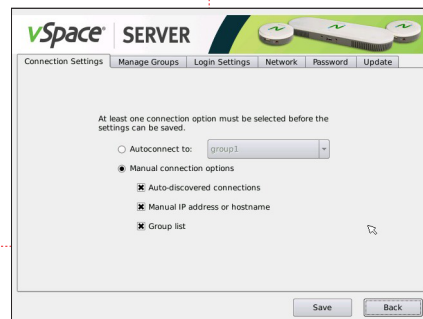
USB Direct Connect	
Icon	
Cable Type	A/B USB 2.0
Maximum Distance	5 Meters

1. Connect the RJ45 port on the main (large) unit to LAN or Ethernet switch (should be on 1Gb LAN) using Cat 5e or Cat 6 cable (maximum length 100m).
2. Connect two small clients to sides of large client using the included 2m A/B USB cables (USB 5 meter limit)

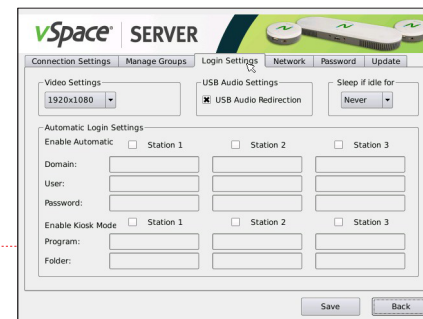
5 Configure MX100 devices



Note: To return to this set up screen, log out of all MX100-Satellite devices and press **F5** at the NComputing splash screen.



1. Configure "Connection Settings."
 - A. Autoconnect (optional - connect to preset host/group) or
 - B. Select from list (default - user selects host/group from list).

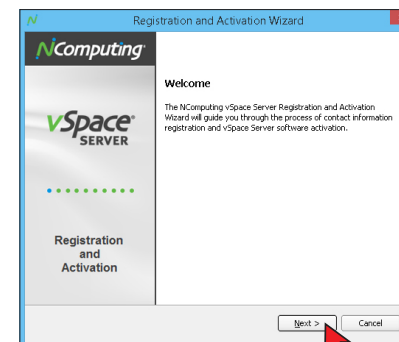
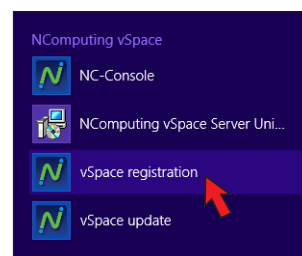


2. Configure "Login Settings." Select resolution and color depth.

6a Register your MX100S 3-user kit

Go to www.ncomputing.com/MX100/register to register your new NComputing MX100S 3-User Kit and learn about the benefits that come with registering your new product.

6b Register and activate your vSpace® Server



Must register within 30 days

MX100S

NComputing

(MX100-Primary / MX100-Satellite)

3-User Kit/Standard Edition

Quick installation guide



Note: Read the vSpace End-user License Agreement during installation for Microsoft operating system licensing requirements. For multiuser applications Microsoft Windows Server and client access licenses are required (see: www.ncomputing.com/mslicensing).

MX100-Primary / MX100-Satellite

This device complies with part 15 of the FCC Rules. Operation is subject to the following two conditions:

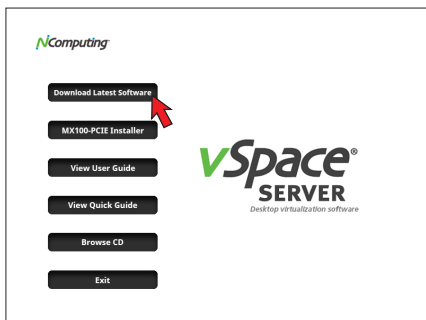
- (1) This device may not cause harmful interference, and (2) this device must accept any interference received, including interference that may cause undesired operation.

Note: This equipment has been tested and found to comply with the limits for a Class A digital device, pursuant to part 15 of the FCC Rules. These limits are designed to provide reasonable protection against harmful interference when the equipment is operated in a commercial environment. This equipment generates, uses, and can radiate radio frequency energy and, if not installed and used in accordance with the instruction manual, may cause harmful interference to radio communications. Operation of this equipment in a residential area is likely to cause harmful interference in which case the user will be required to correct the interference at his own expense.

1 Check contents

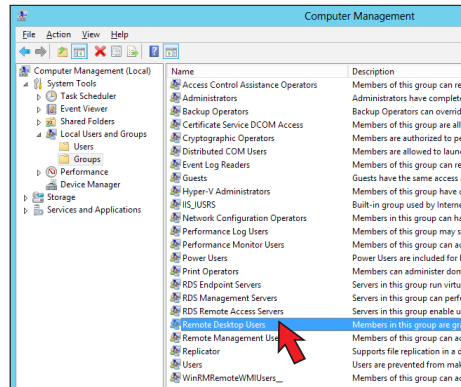
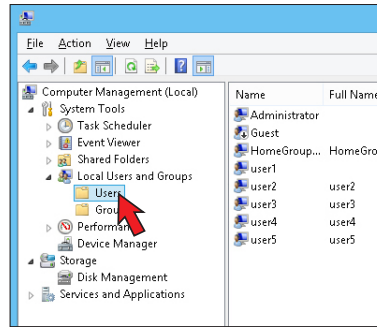


2 Install vSpace® Server software



1. Load CD
- 2a. Choose "Download latest software" or
- 2b. If you are not online, choose "Browse CD"
3. Click on appropriate installation file "vSpace_LSeries_x64.msi"

3 Set up users



1. Add users
 2. Add users to Remote Desktop Users group
- Note:** Skip if local or domain user accounts are already configured

4a Optional VESA Mount



4b Connect MX100 devices and peripherals

