

ARTISTIC IMPRESSION



The project has been registered via MahaRERA registration number: P51800010465 and is available on the website <https://maharera.mahaonline.gov.in> under registered projects. Approval authority for project - MCGM www.mcgm.gov.in



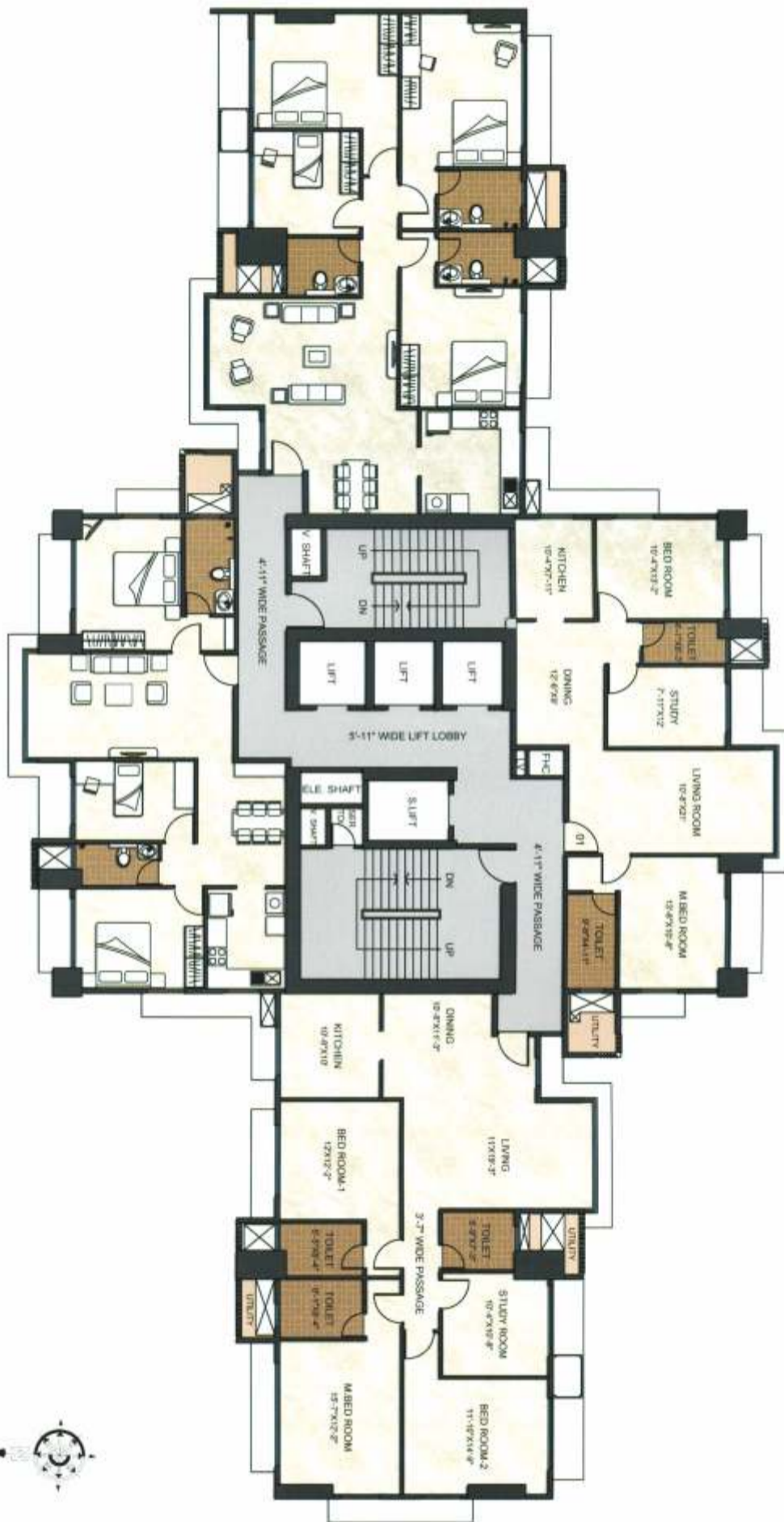
ARTISTIC IMPRESSION



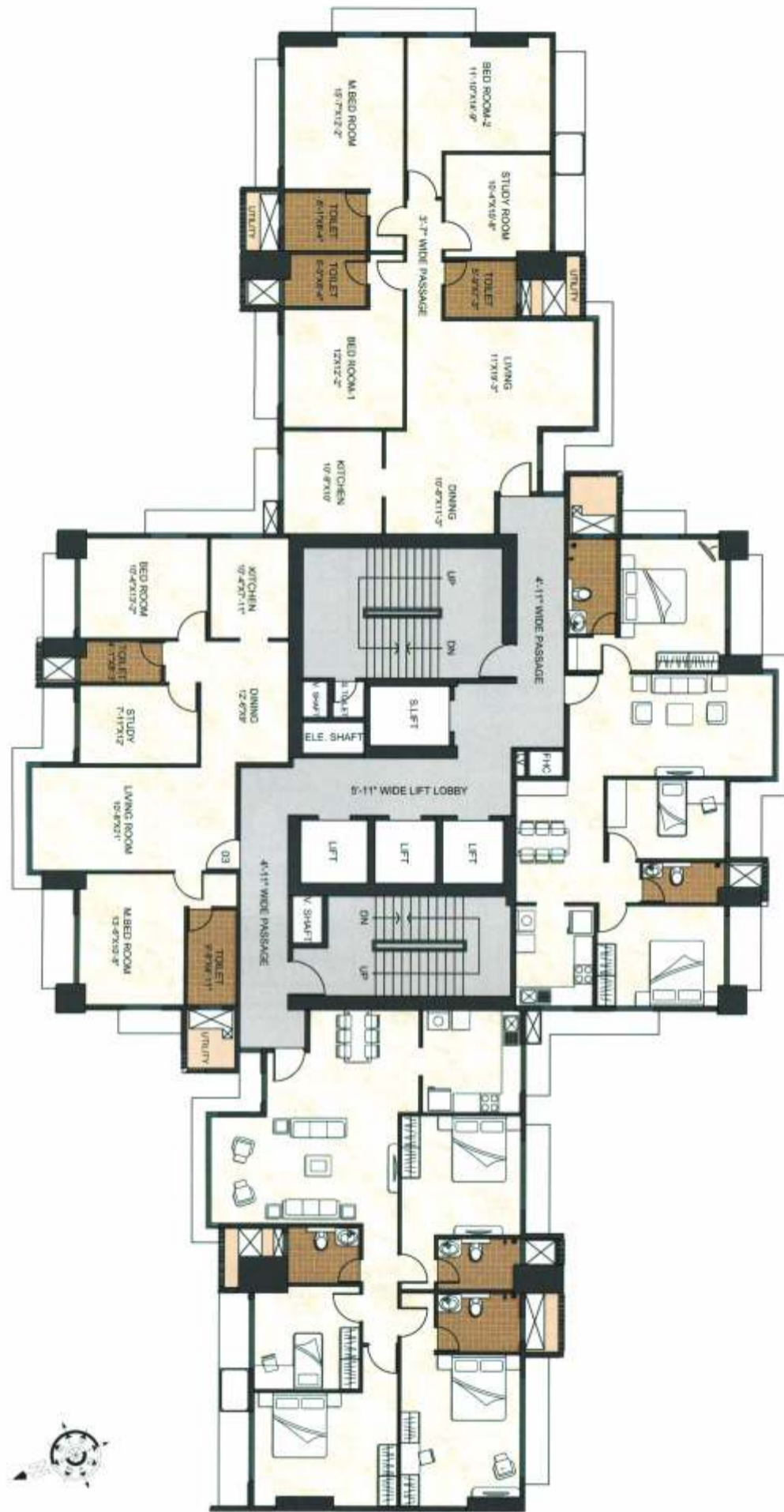
The project has been registered via MahaRERA registration number: P51800010465 and is available on the website <https://maharera.mahaonline.gov.in> under registered projects. Approval authority for project - MCGM www.mcgm.gov.in



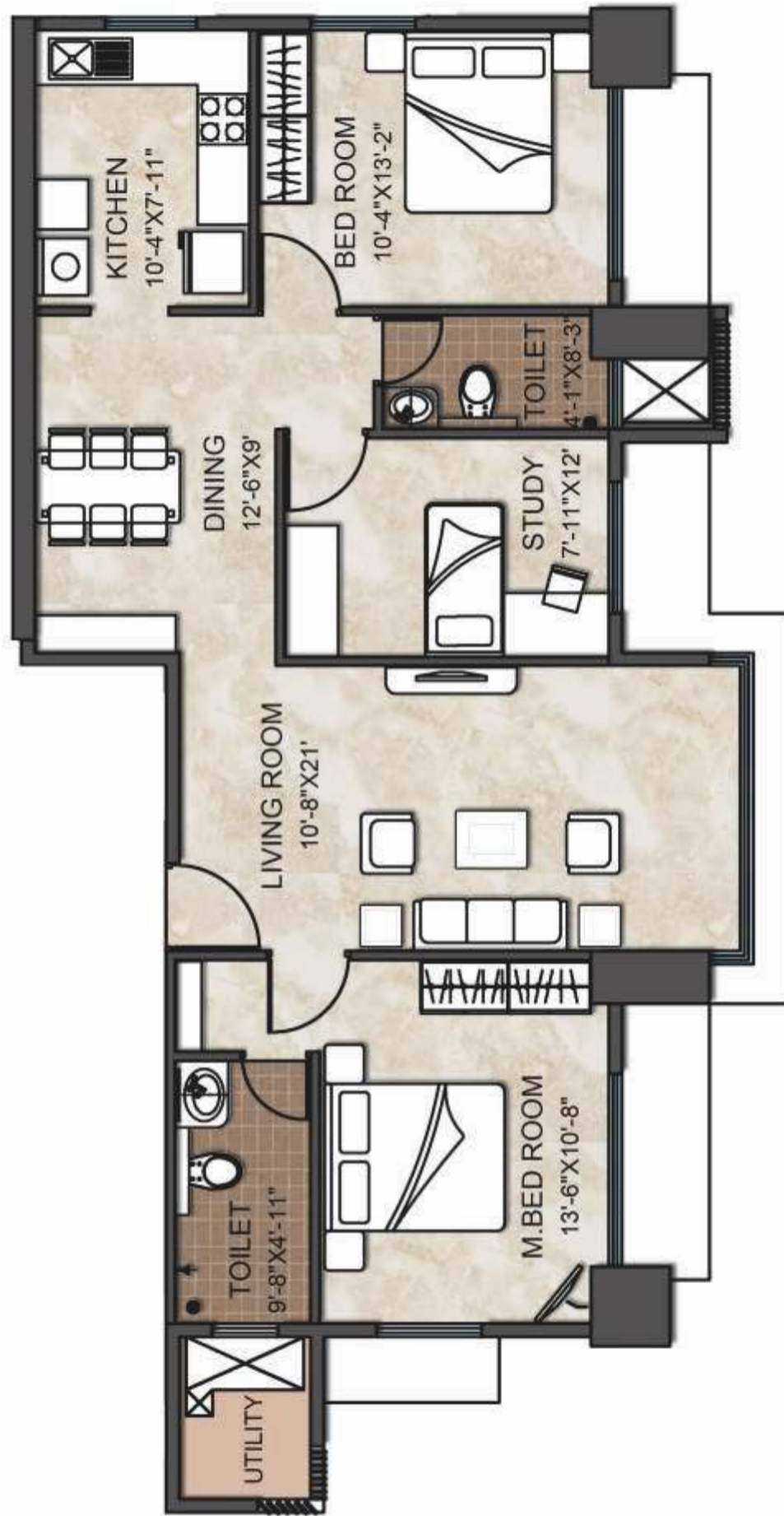
LAYOUT PLAN



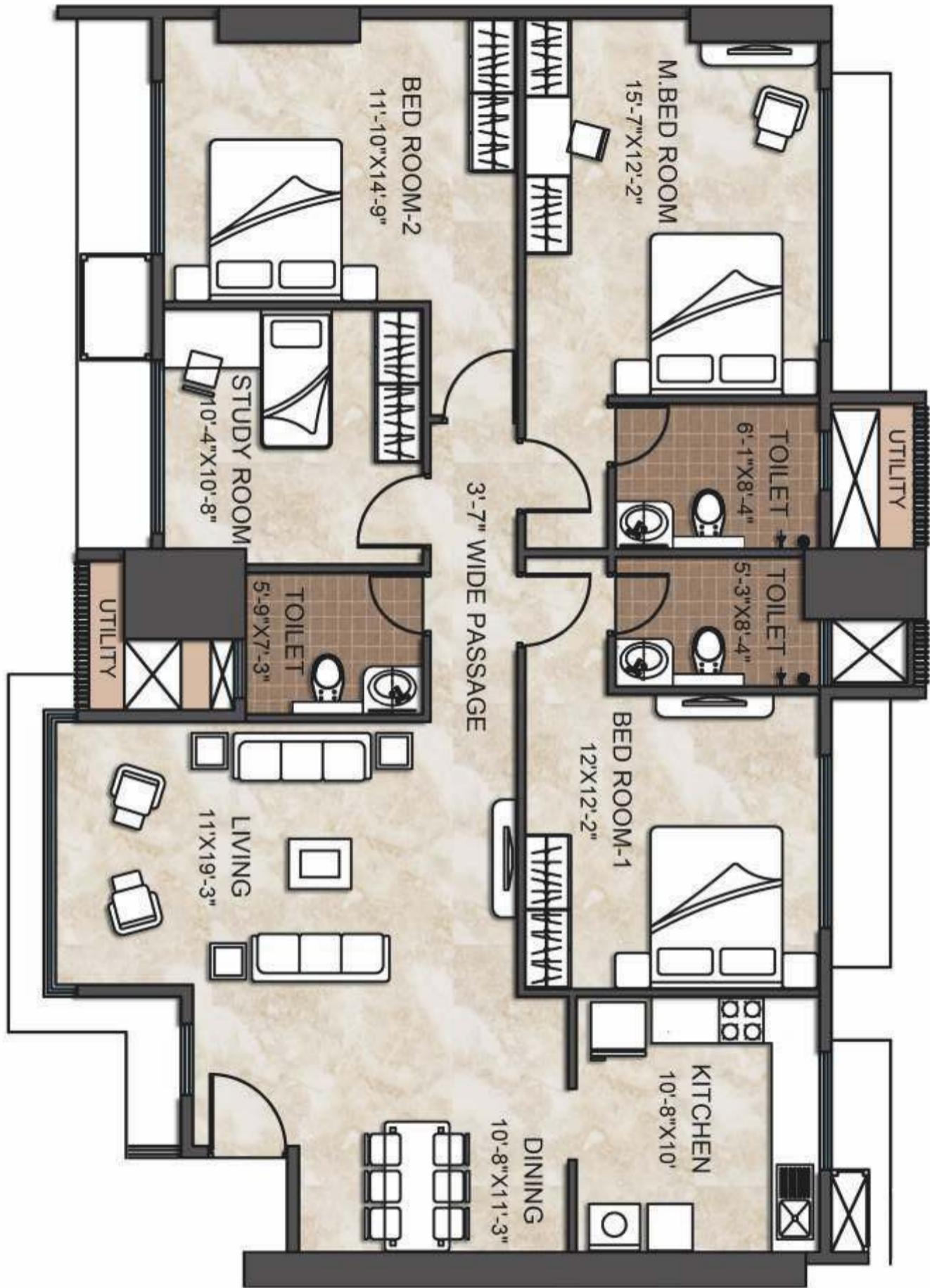
TYPICAL FLOOR PLAN TOWER A



TYPICAL FLOOR PLAN TOWER B



3 BEDROOM FLOOR PLAN



4 BEDROOM FLOOR PLAN

SPECIFICATIONS

CIVIL

- RCC framed structure
- Earth quake resistant structure
- Using aluminium shuttering technology for better finish N quality of RCC structure
- Internal Cement Plaster and Gypsum Plaster.
- Light weight block for internal N external walls

WINDOWS

- Saint Gobin brand UPvc Sliding type windows

PLUMBING

- Toilet & Kitchen will have concealed plumbing
International Design Sanitary Fitting & Fixture

FLOORING

- Vitrified Floor Tiles in Living room. Kitchen & bedroom
- Non-Skid Vitrified tile in Toilets
- Lift Lobby Passage flooring will be of non-skid vitrified tile.
- Staircase will be finished with non skid vitrified tiles
- Stilt will be finished with concrete pavers/Tiles/Granite

KITCHEN

- Granite Counter/platform with stainless steel sink
- MGL piped gas connection

DOORS

- Main door frames of polished/painted wood
- Toilet door frames of comosite marble.
- Main door of commercial flush, finished with laminate of reputed make and with necessary hardware
- Toilet doors of commercial flush, finished with laminate and with necessary hardware
- Bedroom door of commercial flush, finished with laminate of reputed make and with necessary hardware

ELECTRICAL WORK

- Adequate Concealed electrical points in each room will be provided

ELEVATORS

- The best in-class elevators of high speed and energy efficient technology by Thyssenkrupp Elevator.

RAILING

- Glass Railing with S.S. Framework

PAINTING

- Internal Surface Flats Finished with Acrylic Paint
- External building face will be finished in Textured Acrylic Paint

DADO

- Vitrified tiles for toilet dado.
- Vitrified tiles for kitchen dado above kitchen counter

- Project is mortgaged in favour of Piramal Capital & Housing Finance Ltd.
- Developer to provide NOC from Piramal Capital & Housing Finance Ltd for sale of flats/ units.

Disclaimer: All plans, drawings, amenities, facilities etc. are subject to the approval of respective authorities and would change if necessary without prior notice. Discretion lies with the developers, All renders & visuals are artistic impression and not a depiction of actual building facilities. The project has been registered via MahaAREA registration number P518000104165 and is available on the website <https://maharera.mahaonline.gov.in> under registered projects: Approval authority for project-MCGM www.mcgm.gov.in