

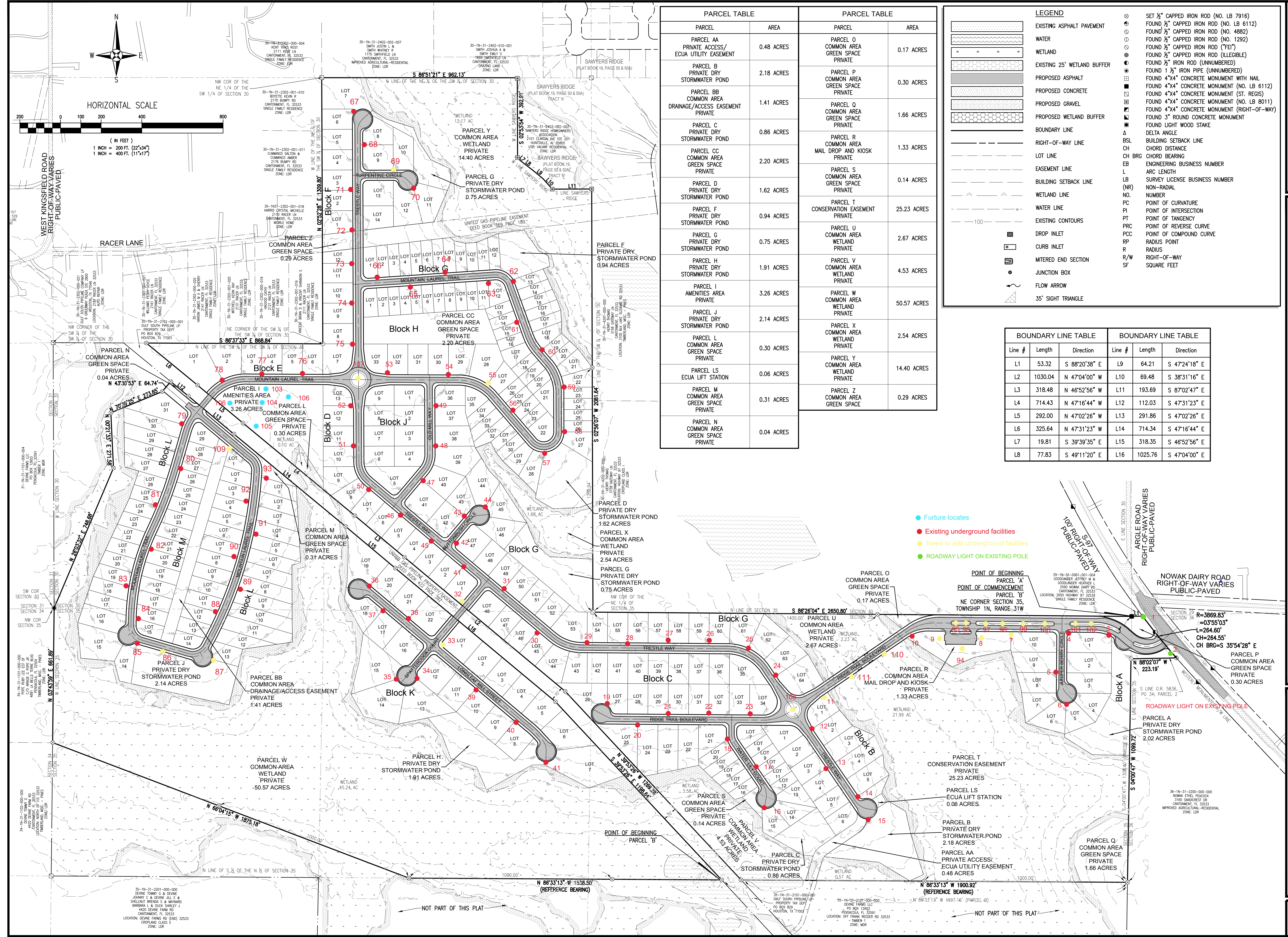
PARCEL TABLE		PARCEL TABLE	
PARCEL	AREA	PARCEL	AREA
PARCEL AA PRIVATE ACCESS/ ECUA UTILITY EASEMENT	0.48 ACRES	PARCEL O COMMON AREA GREEN SPACE PRIVATE	0.17 ACRES
PARCEL B PRIVATE DRY STORMWATER POND	2.18 ACRES	PARCEL P COMMON AREA GREEN SPACE PRIVATE	0.30 ACRES
PARCEL BB COMMON AREA DRAINAGE/ACCESS EASEMENT PRIVATE	1.41 ACRES	PARCEL Q COMMON AREA GREEN SPACE PRIVATE	1.66 ACRES
PARCEL C PRIVATE DRY STORMWATER POND	0.86 ACRES	PARCEL R COMMON AREA MAIL DROP AND KIOSK PRIVATE	1.33 ACRES
PARCEL CC COMMON AREA GREEN SPACE PRIVATE	2.20 ACRES	PARCEL S COMMON AREA GREEN SPACE PRIVATE	0.14 ACRES
PARCEL D PRIVATE DRY STORMWATER POND	1.62 ACRES	PARCEL T CONSERVATION EASEMENT PRIVATE	25.23 ACRES
PARCEL E PRIVATE DRY STORMWATER POND	0.94 ACRES	PARCEL U COMMON AREA WETLAND PRIVATE	2.67 ACRES
PARCEL F PRIVATE DRY STORMWATER POND	0.75 ACRES	PARCEL V COMMON AREA WETLAND PRIVATE	4.53 ACRES
PARCEL G PRIVATE DRY STORMWATER POND	0.75 ACRES	PARCEL W COMMON AREA WETLAND PRIVATE	50.57 ACRES
PARCEL H PRIVATE DRY STORMWATER POND	1.91 ACRES	PARCEL X COMMON AREA WETLAND PRIVATE	2.54 ACRES
PARCEL I AMENITIES AREA PRIVATE	3.26 ACRES	PARCEL Y COMMON AREA WETLAND PRIVATE	14.40 ACRES
PARCEL J PRIVATE DRY STORMWATER POND	2.14 ACRES	PARCEL Z COMMON AREA GREEN SPACE PRIVATE	0.29 ACRES
PARCEL K COMMON AREA GREEN SPACE PRIVATE	0.30 ACRES		
PARCEL L COMMON AREA GREEN SPACE PRIVATE	0.06 ACRES		
PARCEL M COMMON AREA GREEN SPACE PRIVATE	0.31 ACRES		
PARCEL N COMMON AREA GREEN SPACE PRIVATE	0.04 ACRES		

LEGEND

- EXISTING ASPHALT PAVEMENT
- WATER
- WETLAND
- EXISTING 25' WETLAND BUFFER
- PROPOSED ASPHALT
- PROPOSED CONCRETE
- PROPOSED GRAVEL
- PROPOSED WETLAND BUFFER
- BOUNDARY LINE
- RIGHT-OF-WAY LINE
- LOT LINE
- EASEMENT LINE
- BUILDING SETBACK LINE
- WATER LINE
- EXISTING CONTOURS
- DROP INLET
- CURB INLET
- MITERED END SECTION
- JUNCTION BOX
- FLOW ARROW
- 35' SIGHT TRIANGLE

SET 1/2" CAPPED IRON ROD (NO. LB 7916)
 FOUND 1/2" CAPPED IRON ROD (NO. LB 6112)
 FOUND 1/2" CAPPED IRON ROD (NO. 1292)
 FOUND 1/2" CAPPED IRON ROD ("FEI")
 FOUND 1/2" CAPPED IRON ROD (ILLEGIBLE)
 FOUND 1/2" IRON ROD (UNNUMBERED)
 FOUND 1 1/2" IRON PIPE (UNNUMBERED)
 FOUND 4"x4" CONCRETE MONUMENT (NO. LB 6112)
 FOUND 4"x4" CONCRETE MONUMENT (ST. REGIS)
 FOUND 4"x4" CONCRETE MONUMENT (NO. LB 8011)
 FOUND 4"x4" CONCRETE MONUMENT (RIGHT-OF-WAY)
 FOUND 3" ROUND CONCRETE MONUMENT
 FOUND LIGHT WOOD STAKE
 DELTA ANGLE
 BSL BUILDING SETBACK LINE
 CH CHORD DISTANCE
 CH BRG CHORD BEARING
 EB ENGINEERING BUSINESS NUMBER
 L ARC LENGTH
 LB SURVEY LICENSE BUSINESS NUMBER
 NO. NON-RADIAL NUMBER
 PC POINT OF CURVATURE
 PI POINT OF INTERSECTION
 PT POINT OF TANGENCY
 PRC POINT OF REVERSE CURVE
 PCC POINT OF COMPOUND CURVE
 RP RADIUS POINT
 R RADIUS
 R/W RIGHT-OF-WAY
 SF SQUARE FEET

BOUNDARY LINE TABLE			BOUNDARY LINE TABLE		
Line #	Length	Direction	Line #	Length	Direction
L1	53.32	S 88°20'38" E	L9	64.21	S 47°24'18" E
L2	1030.04	N 47°04'00" W	L10	69.48	S 38°31'16" E
L3	318.48	N 46°52'56" W	L11	193.69	S 87°02'47" E
L4	714.43	N 47°16'44" W	L12	112.03	S 47°31'23" E
L5	292.00	N 47°02'26" W	L13	291.86	S 47°02'26" E
L6	325.64	N 47°31'23" W	L14	714.34	S 47°16'44" E
L7	19.81	S 39°39'35" E	L15	318.35	S 46°52'56" E
L8	77.83	S 49°11'20" E	L16	1025.76	S 47°04'00" E



RBA
REBOL-BATTLE & ASSOCIATES
 Civil and Environmental Engineers

IRON ROCK SUBDIVISION
 A 290 LOT SUBDIVISION
 BEING A PORTION OF
 SECTIONS 30, 35 AND 36, TOWNSHIP 1 NORTH, RANGE 31 WEST
 ESCAMBIA COUNTY, FLORIDA.

ENGINEER'S CERTIFICATE
 I, PAUL A. BATTLE, HEREBY CERTIFY THAT ALL PROPOSED ROADWAYS, DRAINAGE, AND OTHER IMPROVEMENTS WILL BE DESIGNED TO COMPLY WITH ALL APPLICABLE FEDERAL, STATE, AND LOCAL DEVELOPMENT REQUIREMENTS AND THAT I AM THE ENGINEER OF RECORD FOR THE IRON ROCK SUBDIVISION.

PAUL A. BATTLE, P.E.
 PROFESSIONAL ENGINEER NO. 53126