



**Brown's**  
CONCRETE PRODUCTS

## **HARDSCAPE COLLECTION**

VOLUME 115

PAVERS

SLABS

RETAINING WALLS

CURBS

FIRE PITS

STEPS

# HARDSCAPE COLLECTION

VOLUME 115

## CONTENTS

Product Application Legend . . . . .	1
Outcropping . . . . .	2
Grand Ledge. . . . .	4
Rockton . . . . .	6
Northface . . . . .	7
Belvedere . . . . .	8
Dimensional Wall . . . . .	9
Parkwall . . . . .	10
Wedgestone . . . . .	11
Antico Stacker. . . . .	12
Random Steps . . . . .	14
Dimensional Steps & Step Fillers . . . . .	15
Amberley. . . . .	16
Appian 70 & Appian 50 . . . . .	18
Appian XL . . . . .	19
Aztec 70 & Aztec 50 . . . . .	20
Aztec XL . . . . .	21
Athenian . . . . .	22
Nordic . . . . .	23
Venetian . . . . .	24
Belgium . . . . .	25
Superior Steppers . . . . .	26
Grand Flagstone . . . . .	27
DC 80 . . . . .	28
Kent II & Oxford Fire Pit Kits . . . . .	29
Rockton, Belvedere & Dimensional Fire Pit Kits . . . . .	30
Coping & Caps . . . . .	32
Stone Edge Curbs. . . . .	34
Curbs . . . . .	35
Inspiration . . . . .	36
Colour charts . . . . .	39



Front Cover: Grand Ledge retaining wall, Manitou





## Brown's Concrete products – here for our customers and our community.

We understand and appreciate the challenges our customers have faced this past year. As we continue to move forward with some uncertainty, we want you to know how much we value your continued loyalty and patronage, and thank you for that patronage.

Brown's Concrete has a long and rich history, with service, value, and innovation as some of our core values. We are committed to maintaining an organic and down-to-earth company vision, allowing us to keep these organizational values at the forefront of our perspective. At Brown's Concrete, we know that by helping our employees, customers, and communities continue to create and implement these values, we are playing a small part in growing the paving stone and retaining wall industry.

Supporting our community, and being a part of something bigger has always been important to us. Having a vision like this is more important now than ever before. We recognize the importance of making everyone in our organization proud, and of making this an organization with which you are proud to do business!

We accept this challenge and are committed to continue finding ways to improve and reorganize ourselves using best practices that will help guide our manufacturing processes, company policies, and procedural decisions. We are devoted to inspiring in our clients a continued sense of confidence in our products, our service, and our integrity. We continue to make it a priority to build goodwill with both current and future partners.

We have spent more time at home than ever before and have all recognized the importance of our homes being a safe haven where we feel comfortable and tranquil. You should feel good in and about your home – and good about the products you've chosen, knowing they've come from a company that has earned your respect.

Allow us and our products to assist you in redesigning your space to make it truly inviting and functional, both indoors and out.

### PRODUCT APPLICATION LEGEND



SUITABLE FOR DRIVEWAYS



SUITABLE FOR PEDESTRIANS



SUITABLE FOR COMPACTOR USE



SUITABLE FOR ROADWAYS



SUITABLE FOR WALLS



SUITABLE FOR STAIRS



SUITABLE FOR COMPACTOR USE WITH RUBBER PAD



SUITABLE FOR PATIO AND PORCH OVERLAYS



PERMEABLE PAVER



# OUTCROPPING

## SHAPES & SIZES



12 different shapes and 24 textures.  
**24" to 72" L x 6" to 24" H**  
 610mm to 1829mm x 152mm to 610mm

Double-sided corner/freestanding available.



## COLOURS



MANITOU

WINDSOR

See Resource Guide for additional sizes and options.



# GRAND LEDGE

## SHAPES & SIZES



**72" W x 12" H x 23" D**  
1829mm x 305mm x 584mm



**60" W x 12" H x 23" D**  
1524mm x 305mm x 584mm



**48" W x 12" H x 23" D**  
1219mm x 305mm x 584mm



**36" W x 12" H x 23" D**  
914mm x 305mm x 584mm



### CORNERS

**54" W x 12" H x 20" D**  
1372mm x 305mm x 508mm



**46" W x 12" H x 21" D**  
1168mm x 305 x 533mm



**38" W x 12" H x 19" D**  
965mm x 305mm x 483mm



**30" W x 12" H x 18" D**  
762mm x 305mm x 457mm

## COLOURS



FOND DU LAC



MANITOU

Grand Ledge and Grand Ledge Corners sold in full bundles.





# ROCKTON

## SHAPES & SIZES



- 42" W x 6" H x 10.5" D**  
1067mm x 152mm x 267mm
- 30" W x 6" H x 10.5" D**  
762mm x 152mm x 267mm
- 21" W x 6" H x 10.5" D**  
533mm x 152mm x 267mm
- 12" W x 6" H x 10.5" D**  
305mm x 152mm x 267mm
- CORNER 21" W x 6" H x 10.5" D**  
533mm x 152mm x 267mm  
Corners are bundled separately.

## COLOURS



FOND DU LAC      MANITOU



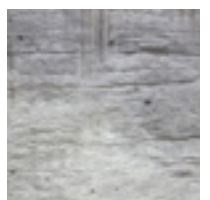
# NORTHFACE

## SHAPES & SIZES



- 17.75" H x 72" W x 24" D**  
450mm x 1829mm x 610mm
- 17.75" H x 36" W x 24" D**  
450mm x 914mm x 610mm
- 6' COPING 7" H x 72" W x 30" D**  
178mm x 1829mm x 762mm
- 3' COPING 7" H x 36" W x 30" D**  
178mm x 914mm x 762mm

## COLOURS



MANITOU

Tolerances for this product are plus or minus 1/4" (6.4mm).





# BELVEDERE®

## SHAPES & SIZES

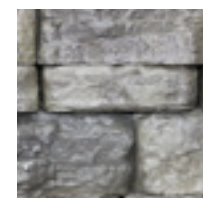


64 textures and sizes.  
**6" to 18" L x 3" to 6" H**  
 152mm to 457mm x 76mm x 152mm

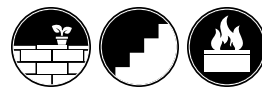
See pages 32 and 33 for Coping and Cap options

**CORNER**  
 Corners are bundled separately.

## COLOURS



MANITOU



# DIMENSIONAL WALL

## SHAPES & SIZES



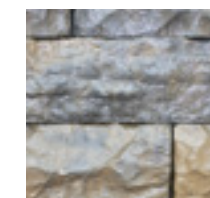
**STRAIGHT**  
**8" D x 12" W x 4" H**  
 203mm x 304mm x 101mm

See pages 34 and 35 for Coping and Cap options

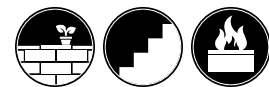
## COLOURS



MANITOU



WINDSOR





SHAPES & SIZES



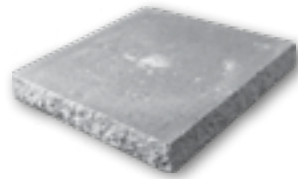
**STRAIGHT**  
5.9" H x 7.87" W x 11.61" D  
150mm x 200mm x 295mm



**CORNER**  
5.9" H x 7.59" W x 11.61" D  
150mm x 193mm x 295mm  
(left and right corner as a pair)



**COPING**  
2.95" H x 23.6" W x 11.81" D  
75mm x 600mm x 300mm

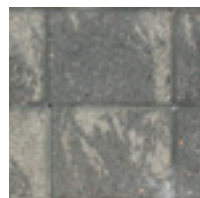


**COLUMN CAP**  
2.95" H x 24" W x 24" D  
75mm x 600mm x 600mm  
Also available in Charcoal, Ultra Black  
and Sahara Blend colours

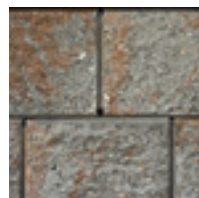


PARKWALL®

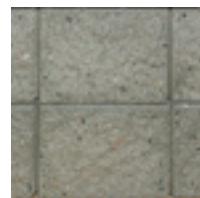
COLOURS



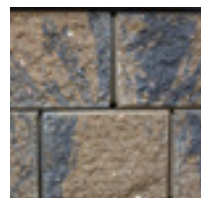
BLACKWOOD



DRIFTWOOD



GRANITE



NIPISSING



TIMBERWOOD



WEDGESTONE

SHAPES & SIZES



**7.87" D x 8.9" W (tapered to 5.9")  
x 3.93" H**  
200mm deep x 225mm (tapered to  
150mm) wide x 100mm high

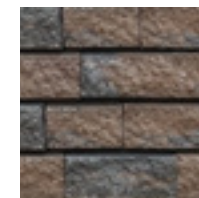
COLOURS



BLACKWOOD



GRANITE



TIMBERWOOD



NIPISSING



DRIFTWOOD





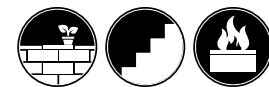


# ANTICO STACKER

## SHAPES & SIZES



**11.81" W x 3.92" H x 7.87" D**  
300mm x 100mm x 200m



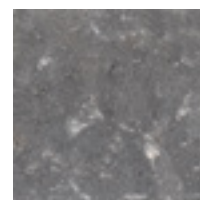
## COLOURS



BEIGE MIX



GREY MIX



ULTRA BLACK  
(Special Order)





## RANDOM STEPS

### SHAPES & SIZES



**6-FOOT STEP**  
72" W x 7" H  
1829mm x 178mm

**4-FOOT STEP**  
48" W x 7" H  
1219mm x 178mm

### COLOURS



MANITOU

WINDSOR

Please refer to the Resource Guide for more sizes and shapes available for the 4 foot and 6 foot Random steps.



## DIMENSIONAL STEPS AND STEP FILLERS

### SHAPES & SIZES



**6-FOOT STEP**  
72" W x 7" H x 30" D  
1829mm x 178mm x 762mm

**4-FOOT STEP**  
48" W x 7" H x 18" D  
1219mm x 178mm x 450mm

**3-FOOT STEP**  
36" W x 7" H x 30" D  
914mm x 178mm x 762mm

**16" FILLER**  
16" W x 7" H x 4" D  
406mm x 178mm x 102mm

Available only in Manitou.

**12" FILLER**  
12" W x 7" H x 4" D  
305mm x 178mm x 102mm

See Resource Guide for more information.

### COLOURS



MANITOU

WINDSOR



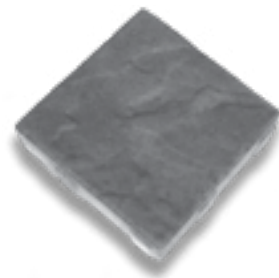


# AMBERLEY

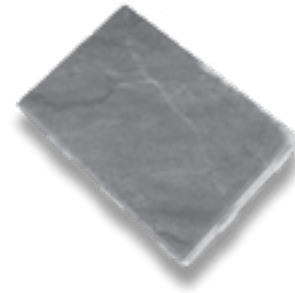
## SHAPES & SIZES



**4.5" x 9" x 2.36"**  
114mm x 225mm x 60mm

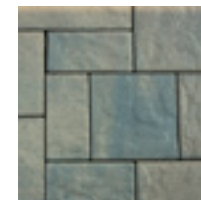


**9" X 9" x 2.36"**  
225mm x 225mm x 60mm

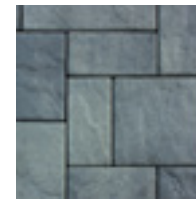


**9" X 13.5" x 2.36"**  
225mm x 343mm x 60mm

## COLOURS



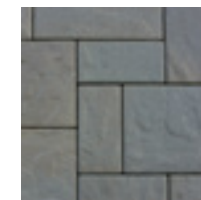
NIPISSING



BLACKWOOD



TIMBERWOOD



DRIFTWOOD





SHAPES & SIZES



**APPIAN 70** (2.76"/70mm depth)  
13" x 6.5" 330mm x 165mm

**APPIAN 50** (1.97"/50mm depth)  
13" x 6.5" 330mm x 165mm



**APPIAN 70** (2.76"/70mm depth)  
13" x 13" 330mm x 330mm

**APPIAN 50** (1.97"/50mm depth)  
13" x 13" 330mm x 330mm



**APPIAN 70** (2.76"/70mm depth)  
13" x 6.5" 330mm x 165mm

**APPIAN 50** (1.97"/50mm depth)  
13" x 6.5" 330mm x 165mm



**APPIAN 70 SOLDIER** (2.76"/70mm depth)  
13" x 6.5" 330mm x 165mm

**APPIAN 50 SOLDIER** (1.97"/50mm depth)  
13" x 6.5" 330mm x 165mm

Available only in Midnight Charcoal.

APPIAN 70 & APPIAN 50

COLOURS



BLACKWOOD

NIPISSING

DRIFTWOOD

TIMBERWOOD

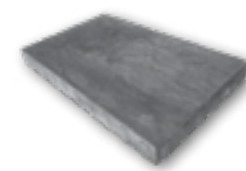
COLOUR - Soldier only



MIDNIGHT CHARCOAL

APPIAN XL

SHAPES & SIZES



**APPIAN XL**  
19.5" x 32.5" x 2.76"  
495mm x 825.5mm x 70mm

COLOURS



BLACKWOOD

NIPISSING





SHAPES & SIZES



**AZTEC 70** (2.76"/70mm depth)  
13" x 6.5" 330mm x 165mm

**AZTEC 50** (1.97"/50mm depth)  
13" x 6.5" 330mm x 165mm



**AZTEC 70** (2.76"/70mm depth)  
330mm x 330mm  
13" x 13"

**AZTEC 50** (1.97"/50mm depth)  
330mm x 330mm  
13" x 13"



**AZTEC 70** (2.76"/70mm depth)  
19.5" x 13"  
495mm x 330mm

**AZTEC 50** (1.97"/50mm depth)  
495mm x 330mm  
19.5" x 13"



**AZTEC 70 SOLDIER** (2.76"/ 70mm depth)  
13" x 6.5" 330mm x 165mm

**AZTEC 50 SOLDIER** (1.97"/50mm depth)  
13" x 6.5" 330mm x 165mm

Available only in Midnight Charcoal.

# AZTEC 70 & AZTEC 50

COLOURS



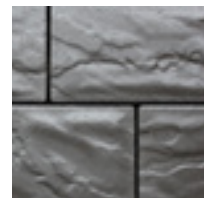
BLACKWOOD

NIPISSING

DRIFTWOOD

TIMBERWOOD

COLOUR - Soldier only

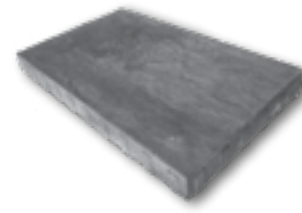


MIDNIGHT CHARCOAL



# AZTEC XL

SHAPES & SIZES



**AZTEC XL**  
19.5" x 32.5" x 2.76"  
495mm x 825.5mm x 70mm

COLOURS



BLACKWOOD

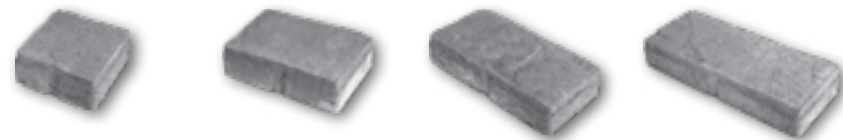
NIPISSING





## ATHENIAN 70 - SPECIAL ORDER ONLY

### SHAPES & SIZES



**6.42" x 6.42" x 2.76"**  
163mm x 163mm  
x 70mm

**9.65" x 6.42" x 2.76"**  
245mm x 163mm  
x 70mm

**12.87" x 6.42" x 2.76"**  
327mm x 163mm  
x 70mm

**16.10" x 6.42" x 2.76"**  
409mm x 163mm  
x 70mm

### COLOURS



BLACKWOOD

NIPISSING



## NORDIC

### SHAPES & SIZES



**NORDIC**  
**7.91" x 3.97" x 2.36"**  
200mm x 100mm x 60mm

### COLOURS



MIDNIGHT  
CHARCOAL

BLACKWOOD

CHARCOAL

GRANITE

LAURENTIAN

FAIRBANKS

NIPISSING

Nordic is available in 80mm and 80mm Herringbone Pattern





## VENETIAN - SPECIAL ORDER ONLY

### SHAPES & SIZES



#### VENETIAN RANDOM

3 sizes of stone in each bundle.

**7.1" x 4.8"**  
**x 2.36"**

180mm  
x 120mm  
x 60mm

**4.8" x 4.8"**  
**x 2.36"**

120mm  
x 120mm  
x 60mm

**2.4" x 4.8"**  
**x 2.36"**

60mm  
x 120mm  
x 60mm

### COLOURS

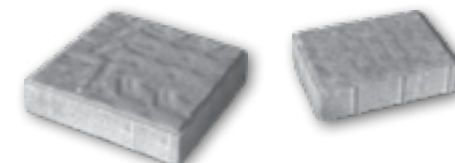


BLACKWOOD



## BELGIUM

### BUNDLES & SIZES (SOLD SEPARATELY)

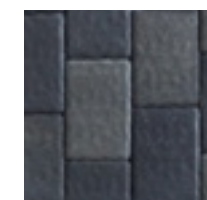


**12" x 12" x 2.36"**  
300mm x 300mm x 60mm

**6" x 9" x 2.36"**  
150mm x 225mm x 60mm



### COLOURS



BLACKWOOD



MIDNIGHT CHARCOAL  
(6x9 only)



NIPISSING

MADE STRONG WITH THE FINEST GRANITE AGGREGATE



## SUPERIOR STEPPERS

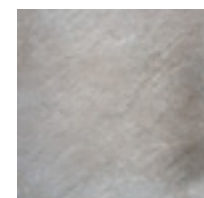
### SHAPES & SIZES



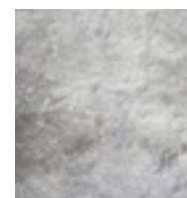
**27" W x 21" D x 2" H**  
 686mm x 533mm x 51mm  
 Eight different shapes are available per bundle



### COLOURS



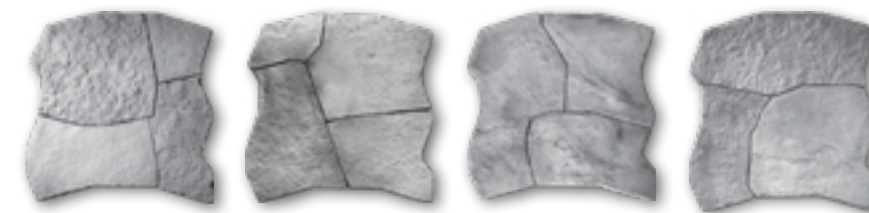
FOND DU LAC



MANITOU

## GRAND FLAGSTONE

### SHAPES & SIZES

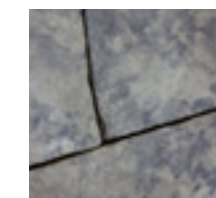


**42" x 36" x 1.75" H**  
 1067mm x 965mm x 45mm

Each layer consists of 3 or 4 individual pieces.



### COLOURS

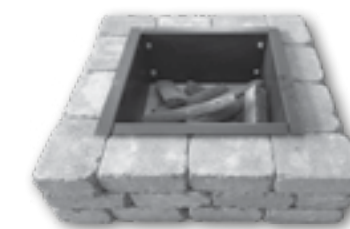


MANITOU





SHAPES & SIZES



**KENT II FIRE PIT KIT**  
43.3" X 43.3" outside diameter x 12"  
1100mm x 1100mm x 300mm



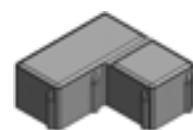
**OXFORD FIRE PIT KIT**  
46" outside diameter x 12" H  
1168mm x 305mm

DC 80

Permeable Interlocking Concrete Paver (PICP) designed for maximum efficiency through mechanical installation achieving a 6% void space for drainage

ALL COLOURS ARE SPECIAL ORDER

SHAPES & SIZES



**BLOCK 1**  
7.6" x 7.6" (3.7" at ends of "L") x 2.76"  
193" x 193mm (93mm at ends of "L") x 80mm



**BLOCK 2**  
7.6" x 7.6" (3.7" at ends of "L") x 2.76"  
193mm x 193mm (93mm at ends of "L") x 80mm



**BLOCK 3**  
3.7" x 7.6" x 2.76"  
93mm x 193mm x 80mm

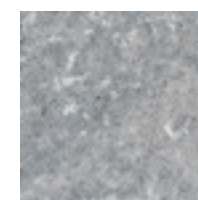


**BLOCK 4**  
3.7" x 3.7" x 2.76"  
93mm x 93mm x 80mm



KENT II AND OXFORD FIRE PIT KITS

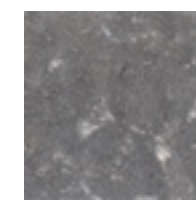
KENT COLOURS



GREY MIX



BEIGE MIX



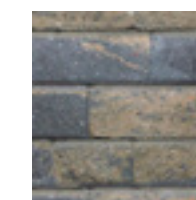
ULTRA BLACK  
(Special Order)

See Resource Guide for installation details.

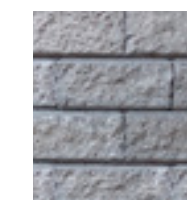
OXFORD COLOURS



BLACKWOOD



NIPISSING



GRANITE

MADE STRONG WITH THE FINEST GRANITE AGGREGATE



## ROCKTON, BELVEDERE AND DIMENSIONAL FIRE PIT KITS

### SHAPES & SIZES



**ROCKTON KIT**  
51" square x 12" H  
1295mm x 305mm



**BELVEDERE® KIT**  
58 " outside diameter x 14.5" H  
1473mm x 368mm



**DIMENSIONAL KIT**  
44" square x 12" H  
1118mm x 305mm

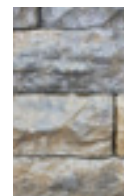
### COLOURS



FOND DU LAC  
Rockton



MANITOU  
Rockton  
Belvedere  
Dimensional



WINDSOR  
Belvedere  
Dimensional

See Resource Guide for installation details.





## COPING AND CAPS

### SHAPES & SIZES



**DIMENSIONAL COPING**  
13" D x 24" W x 2.5" H  
330mm x 609mm x 63mm



**DIMENSIONAL COPING**  
13" D x 18" W x 2.5" H  
330mm x 457mm x 63mm



**DIMENSIONAL FINISHED END COPING**  
13" D x 19" W x 2.5" H  
330mm x 482mm x 63mm

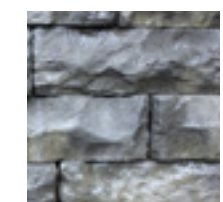
### SHAPES & SIZES



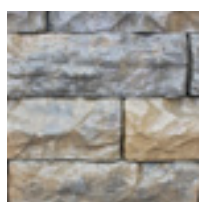
**BELVEDERE® COPING**  
All pieces approximately 10.25" D x 2.25" H  
260mm x 57mm

**BELVEDERE® CAP**  
27" W x 27" D x 2.5" H  
686mm x 686mm x 64mm

### COLOURS



MANITOU



WINDSOR



## STONE EDGE CURBS

### SHAPES & SIZES



**STONE EDGE CURB**  
6" H x 36" W x 7" D  
152mm x 914mm x 178mm

### COLOURS



EBONY

## CURBS

### SHAPES & SIZES

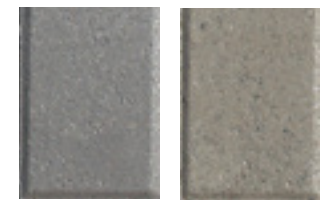


**DRIVEWAY CURB**  
6" W x 39" L x 6" H  
150mm x 1000mm x 150mm



**MILLSTONE CURB - NEW**  
3.94" W x 24" L x 4.72" H  
100mm x 609.6mm x 125mm

### COLOURS



CHARCOAL

GRANITE



## BE INSPIRED.

---

TOP LEFT: Outcropping Manitou  
BOTTOM LEFT: Rockton Manitou

TOP RIGHT: Appian Blackwood  
BOTTOM RIGHT: Belvedere Manitou



# CREATIVITY HAS NO LIMITS.



BOTTOM: Belvedere Manitou, Random Steps Manitou  
 FAR RIGHT: Appian Nipissing



## COLOUR CHARTS

DRY CAST COLOURS	SPECIAL ORDER										SPECIAL ORDER							
	AMBERLEY	APPIAN 50/70	APPIAN 70 SOLDIER	APPIAN/AZTEC 50 SOLDIER	AZTEC 50/70	APPIAN/AZTEC XL	ATHENIAN - SPECIAL ORDER	NORDIC	VENETIAN - SPECIAL ORDER	BELGIUM	DC 80 (PERMEABLE)	MILLSTONE CURB	DRIVEWAY CURB	PARKWALL	WEDGESTONE	ANTICO STACKER	OXFORD FIREPIT	KENT II FIREPIT
BLACKWOOD																		
CHARCOAL										6x9 ONLY								
DRIFTWOOD																		
GRANITE																		
LAURENTIAN																		
NIPISSING																		
TIMBERWOOD																		
FAIRBANKS																		
GREY MIX																		
BEIGE MIX																		
ULTRA BLACK																		
MIDNIGHT CHARCOAL										6x9 ONLY								

\*S.O.: SPECIAL ORDER

WET CAST COLOURS	SPECIAL ORDER												SPECIAL ORDER		
	ROCKTON	NORTHFACE	BELVEDERE WALL & COPING	DIMENSIONAL WALL & COPING	OUTCROPPING	4' & 6' DIMENSIONAL & RANDOM STEPS	3' DIMENSIONAL STEPS	STEP FILLERS	SUPERIOR STEPPERS	GRAND FLAGSTONE	ROCKTON FIREPIT	BELVEDERE FIREPIT	DIMENSIONAL FIREPIT	STONE EDGE CURB	GRAND LEDGE WALL
MANITOU															
WINDSOR															
FOND DU LAC															
EBONY															



### Brown's Concrete Products Limited

3075 Herold Drive, Sudbury, Ontario, Canada P3E 6K9

Telephone: 705-522-8220

Fax: 705-522-2732

Toll-free: 1-800-461-4888

Email: [info@brownsconcrete.com](mailto:info@brownsconcrete.com)

[www.BrownsConcrete.com](http://www.BrownsConcrete.com)



FACEBOOK: @BrownsConcrete



TWITTER: @Browns1907



INSTAGRAM: @browns1907



LINKEDIN: @Brown's Concrete Products Limited



PINTEREST: @brownsconcreteproducts



YOUTUBE: Rosetta Hardscapes



## BROWN'S LIFETIME WARRANTY

Brown's Concrete Products Limited provides a Lifetime Warranty to the original purchaser on the structural integrity of its products used in residential applications. If the material installed on the owner's property, using our recommended guidelines, proves to be defective the product will be replaced without cost. Colour matching and the occurrence of efflorescence cannot be guaranteed. The Warranty does not cover damage resulting from subgrade settlement or movement, contact with chemicals or paint, discolouration due to airborne contamination, staining, oxidation or improper sealing. Please refer to ICPI and/or NCMA for recommended product maintenance programs, winter care solutions and recommended de-icing products. This warranty is not transferable and proof of purchase is required.

Note: Colour swatches are for reference only and may not represent the actual product colour. We recommend that you see your local dealer to view actual sample pieces prior to final colour selection.