

*Finest natural living
with modern lifestyle*



DHP 
town
2 & 3 BHK PREMIUM HOMES

*Your gateway
of grand lifestyle*

DHP 
TOWN
2 & 3 BHK PREMIUM HOMES

Now, no need to go anywhere, DHP Infra ventures provide you an ambience that fulfill all the desires of a dream home with metropolitan amenities. We proudly launching our new scheme "DHP TOWN", loaded with world class amenities and facilities. It is the best and the first single gated township of the city crafts by DHP Infra ventures, where you can feel life every moment. It offers you Greenery Surrounding, Landscape Garden, Fountains, Party Area, Clubhouse, Multipurpose Play Court, Kids Play Area with Parents Sitting Benches, well equiped Green Gym and many more that's you never seen before in the city. It is a perfect place to look forward to enjoying all the benefits of community living - a greater sense of belonging, closer bonding with fellow residents and a lifestyle that keeps you engaged and entertained. It is a landmark township project to live urban city life.





DHP town
2 & 3 BHK PREMIUM HOMES





Pleasant surrounding for healthy life

When you have a positive greenery environment, it improve your happiness and keep you healthy ever. DHP Infraventures provides you a fully developed amenities space for all age group. Where you live life with a positive energy.



Perfect place for every occasion

Everyday of your life is a special day. Celebrate each day of life with your family and friends. We offered you a large club house cum party hall. So that all can enjoy every moment of life together And give a new height to your happiness.



Craft your beautiful memories

The most beautiful things are not things. They are people and places, feelings and smiles. We provide you a pleasant surrounding that feels you special every time, a beautiful garden with sitting benches and a fountain. So that you spend golden moments with your nearest one's after a hectic day. Rejoice your all good memories. So that life full of happiness.

Right Side View

DHP 
town
2 & 3 BHK PREMIUM HOMES



Proposed Site View

DHP 
town
2 & 3 BHK PREMIUM HOMES





Entrance Gate with Security Guard Cabin

DHP town

2 & 3 BHK PREMIUM HOMES
Amenities & Facilities



Open Green Gym



Skating Area



Jogging Track



Space For Yoga



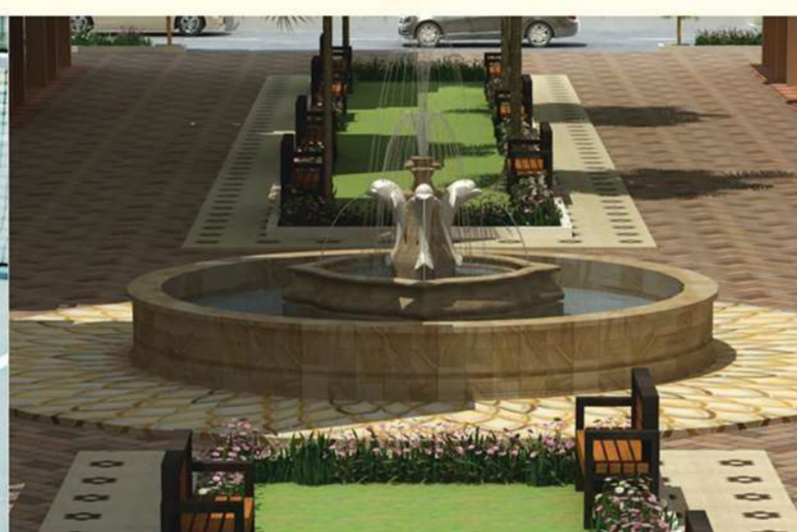
Gazebo



Children's Play Area with Parents Sitting Bench



Multi-Purpose Sports Court



Fountain



Party Lawn



Senior Citizen Corner



Group Sitting Area



Club House



Pool Table

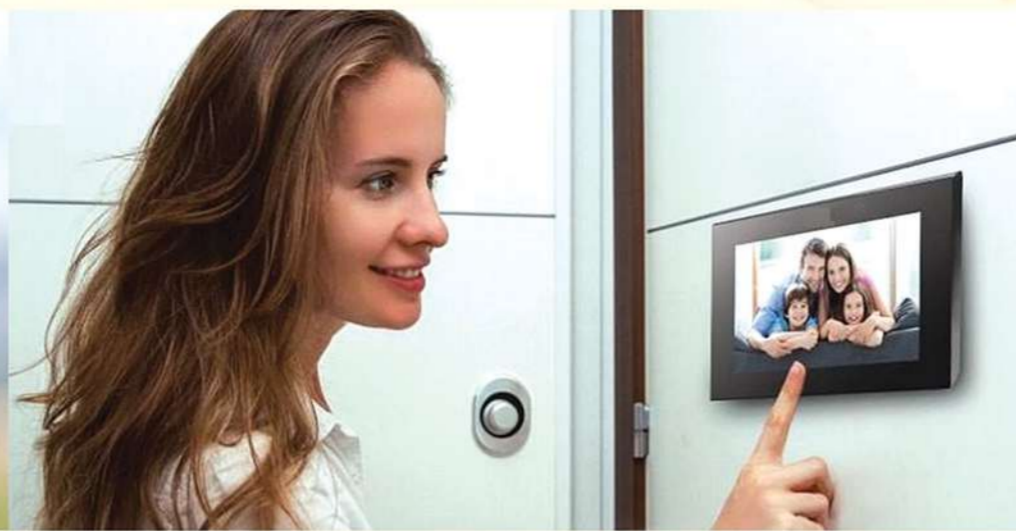


Landscaped Garden & Sitting Area

Image used are for representation purpose only.



Premises Secure with CCTV Cameras



Video Door Phone



Modular Kitchen



Designer Door



Lift & Common Area with Power Back-up



POP with Light in Living Room



Jaquar or Equivalent Co. Bath Fitting



Solar Energy Power



Fire Extinguisher



Rain Water Harvesting

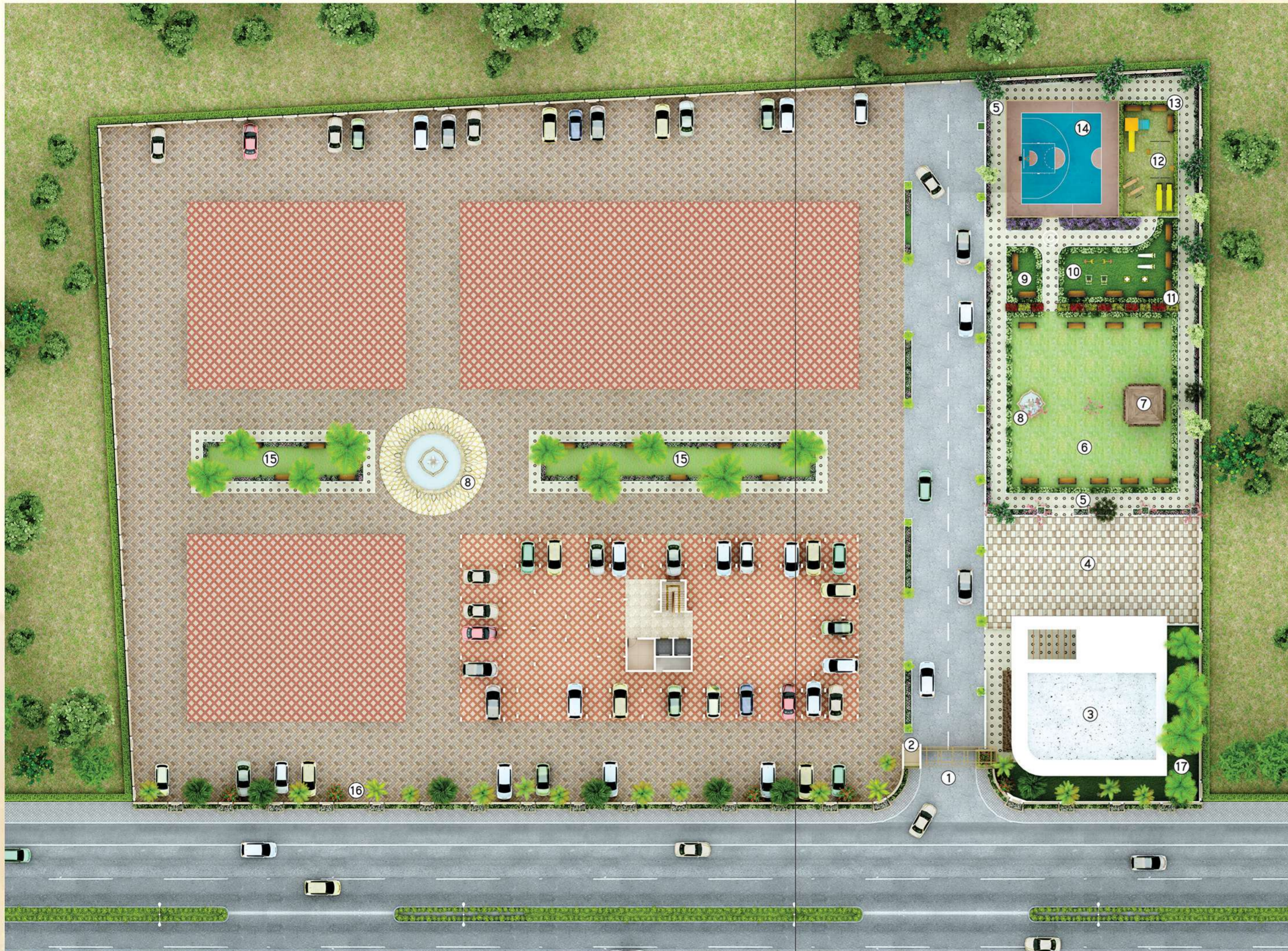


Generator For Common Electricity

Image used are for representation purpose only.

SPECIFICATION

▪ STRUCTURE	Earthquake resistance R.C.C structure & Premium quality construction.	
▪ FLOORING	Living & Dining Master Bedroom Other Bedroom Kitchen Balconies Toilets	- Premium quality vitrified tiles of reputed brand. - Wooden pattern vitrified tiles in one master bedroom only. - Vitrified tiles. - Vitrified tiles. - Vitrified tiles. - Dado in concept tiles & floor in tiles.
▪ WALLS	External Internal Common wall	- 150 mm thick - 115 mm thick - 230 mm thick
▪ PLASTER	External wall Internal wall	- 20 mm sponge plaster - 12 mm funti plaster
▪ PAINTING FINISH	Internal wall External wall	- Putty finish with premium luxury Emulsion paints. - Apex & equivalent quality.
▪ DOORS/WINDOWS	Main Entrance Door Other Doors & Toilets Doors Windows	- Teak wood frame designer door. - Laminate finish flush door with granite door frames. - Anodised aluminium window.
▪ ELECTRICAL	Wiring Switches & Sockets	- Concealed wire fitting of reputed brand. - Premium quality modular switches & sockets of reputed brand.
▪ STAIRCASE RAILING	Stainless steel railing.	
▪ TOILETS	Indian & European W.C.	
▪ PLUMBING	Sanitary ware Fittings Water supply Rain water piping	- American standard or equivalent. - Jaquar bath fitting or equivalent. - Superior quality PVC. - PVC pipe fitting.
▪ KITCHEN	Granite kitchen platform with stainless steel sink and modular kitchen furniture with chimney.	
▪ Note	<ul style="list-style-type: none"> Registration, stamp duty charges and document preparation charges shall be paid by purchaser. M.S.E.D.C.L. meter, water meter and other incidental expenses will be charged extra. Extra work will be done with extra payment in advance. Elevation changes are not allowed. All rights are reserved with builder for making changes in drawing & specification. Any other Govt. taxes & GST as applicable will be charge extra. 	



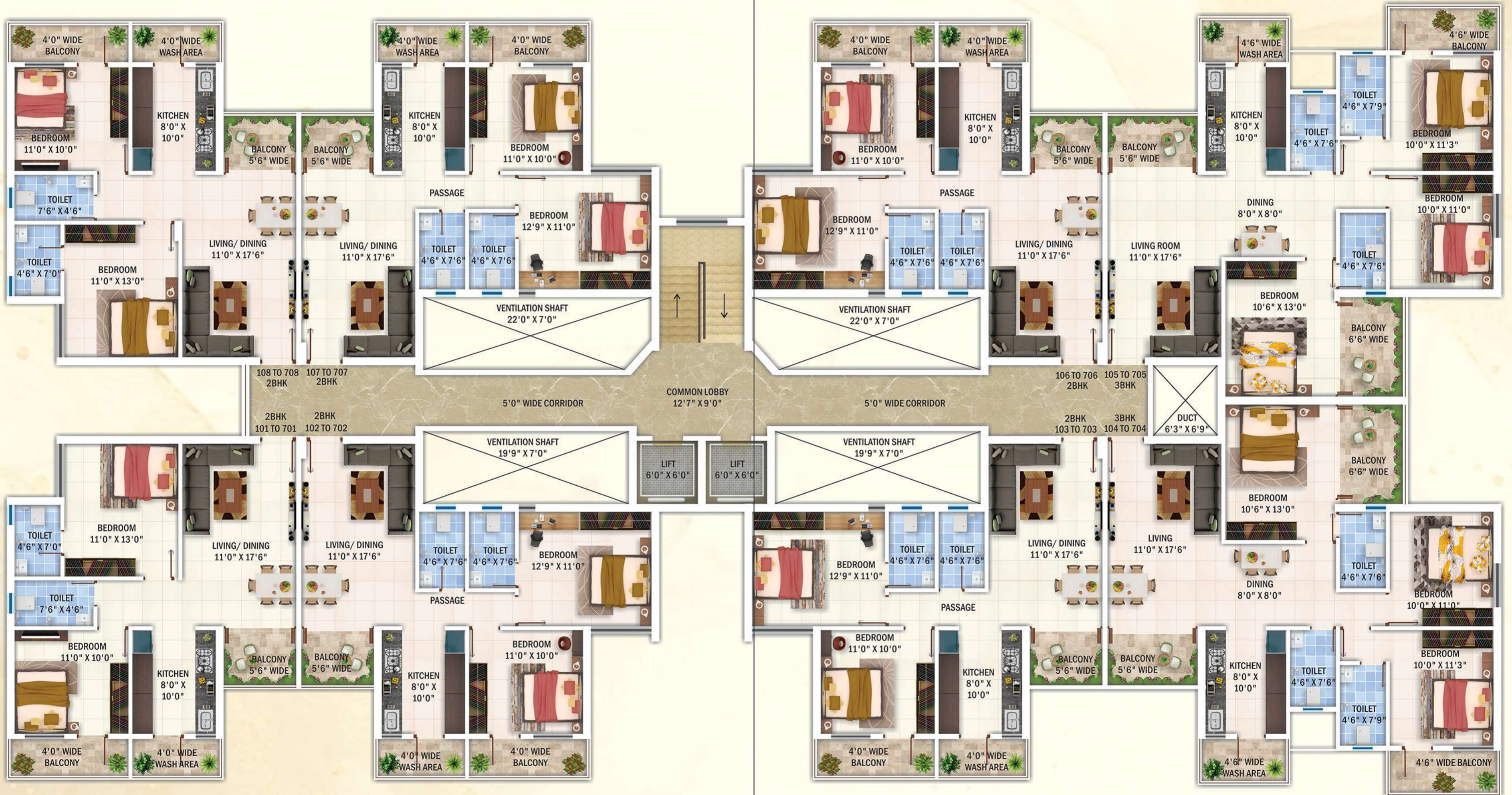
PROPERTY FEATURES

- ① Main Entrance Gate
- ② Security Guard Cabin
- ③ Club House
- ④ Skating Area
- ⑤ Jogging Track
- ⑥ Party Lawn
- ⑦ Gazebo For Yoga
- ⑧ Fountain
- ⑨ Senior Citizen Corner
- ⑩ Open Green Gym
- ⑪ Group Sitting Area
- ⑫ Children's Play Area
- ⑬ Parents Sitting Benches
- ⑭ Multi-Purpose Sports Court
- ⑮ Landscaped Garden & Sitting Area
- ⑯ Plantation Around the Campus

Ground Floor



TYPICAL FLOOR PLAN



First To Seventh Floor



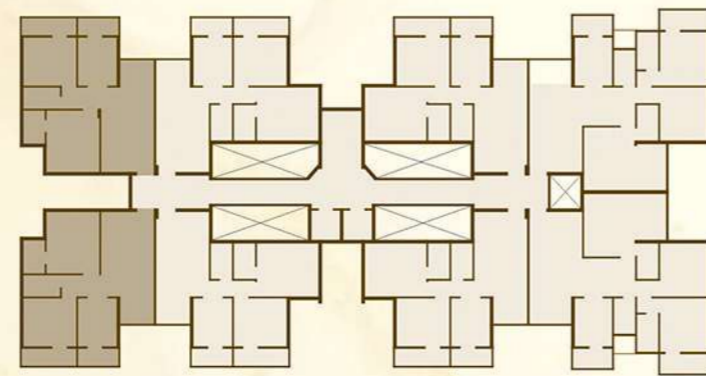
INDIVIDUAL FLOOR PLAN



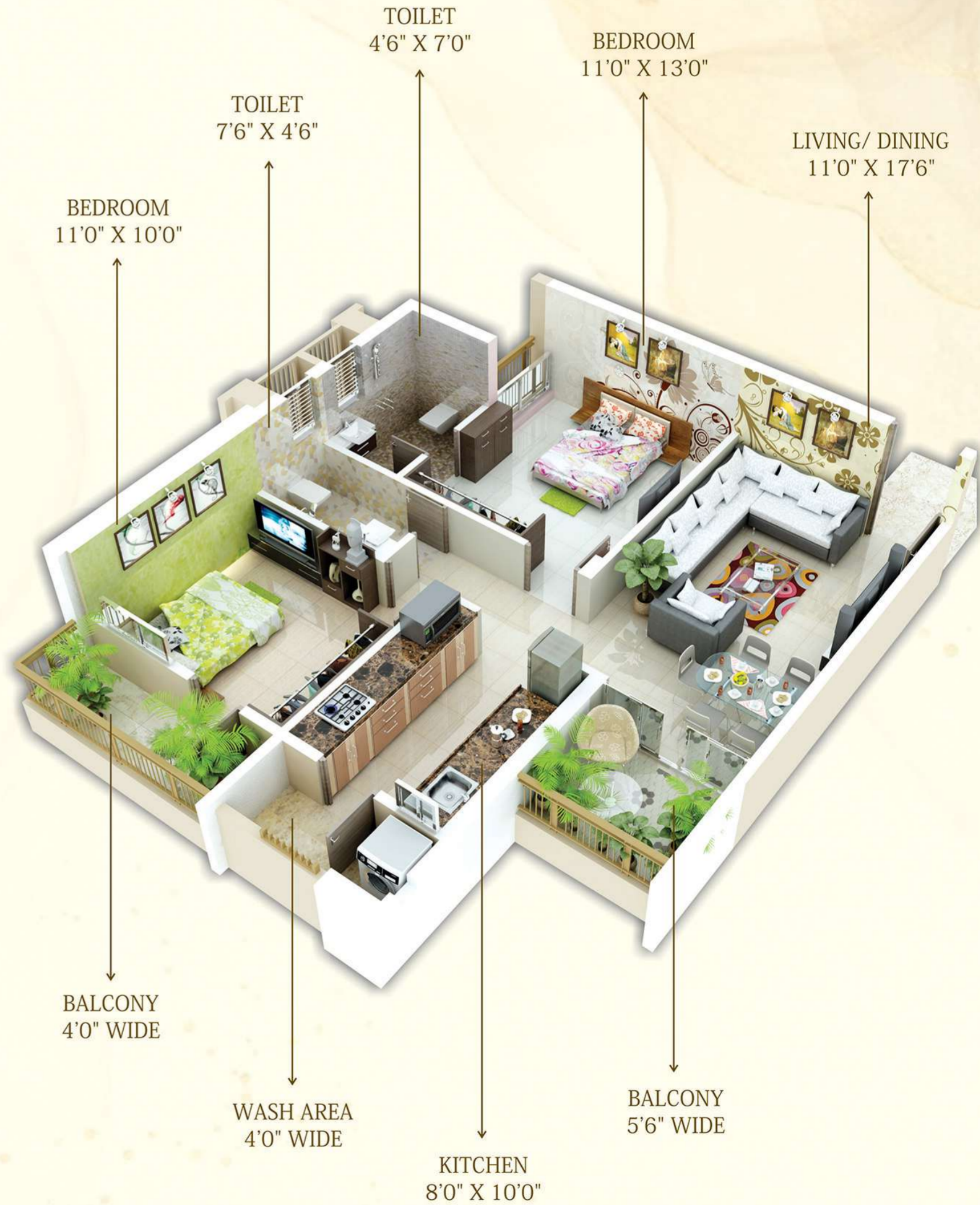
Flat No.
101 TO 701 & 108 To 708



Key Plan



ISOMETRIC VIEW (2 BHK FLAT)



Furniture image used are for representation purpose only.

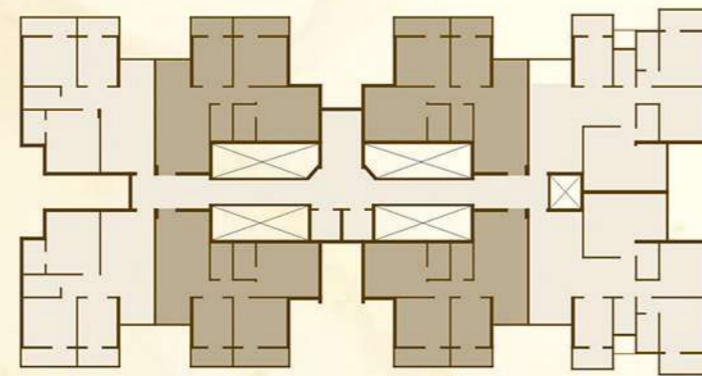
INDIVIDUAL FLOOR PLAN



Flat No.
102 TO 702 & 103 TO 703
106 TO 706 & 107 TO 707



Key Plan



ISOMETRIC VIEW (2 BHK FLAT)



Furniture image used are for representation purpose only.

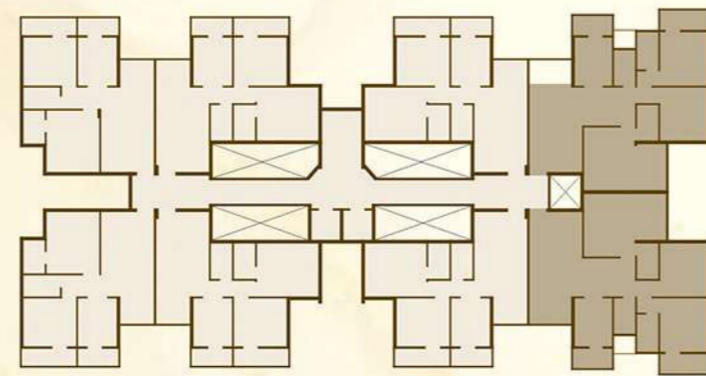
INDIVIDUAL FLOOR PLAN



Flat No.
104 TO 704 & 105 To 705



Key Plan



ISOMETRIC VIEW (3 BHK FLAT)

DHP 
town
2 & 3 BHK PREMIUM HOMES



Furniture image used are for representation purpose only.

*The finest craftsmanship
of Wardha City*

DHP 
TOWN
2 & 3 BHK PREMIUM HOMES

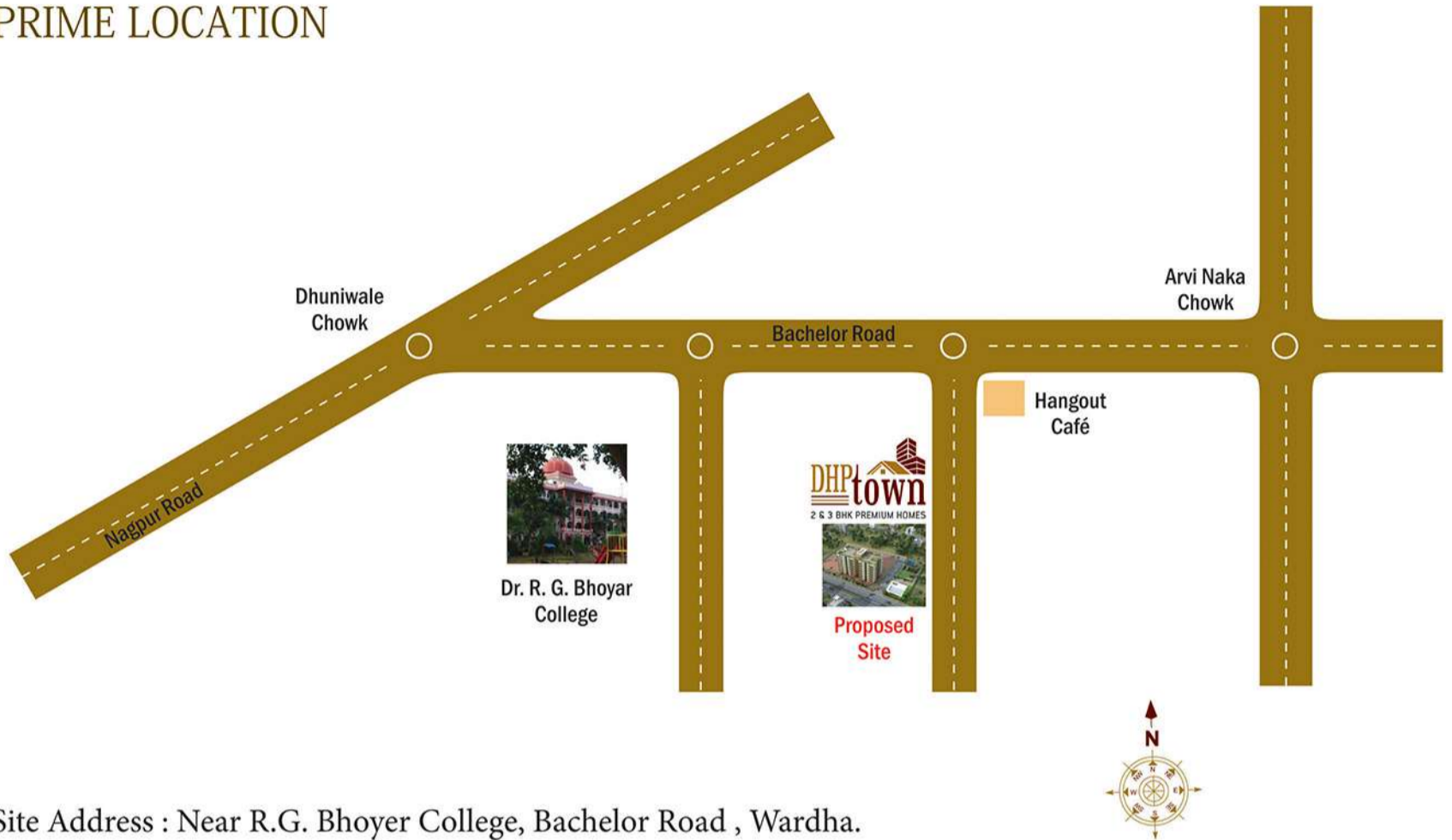




MAHA RERA REGISTRATION NO.
P50400046904
 maharera.mahaonline.gov.in

Member of
CREDAI
 Wardha

PRIME LOCATION



Site Address : Near R.G. Bhojar College, Bachelor Road , Wardha.

CONTACT FOR BOOKING

98222 381 42 / 99601 786 52 / 98222 387 25

A Project By



DHP Infra Ventures

Behind New Arts College, Swami Samarth Nagar, Murarka Layout, Wardha.

dhpinfraventures@gmail.com

ARCHITECT

Emanate Design

Ar. Lokesh Kadu : +91 9823872384

STRUCTURAL DESIGNER

Aaj Engineers & Consultants

LEGAL ADVISOR

Adv.

Disclaimer : This brochure is only a conceptual presentation of the project & not a legal offering. The promoters reserve the rights to add, delete or alter the above specification & plans as deemed fit. Images used are for representation purpose only.