

THE PIRATES OF PENZANCE

Allegro Moderato

AND NTR.

5

7

10

13

16

19

22

26

29

33

Empty musical staves at the bottom of the page.

2.                     

36.

39.

42.

45.

47.

50.

53.

19-Sept '00.

*John Gray*

DOUBLE BASS SOLO from  
THE PIRATES OF PENZANCE

*Allegro Moderato.*

D.B. 

Piano  
Viola

This system contains the first four measures of the piece. It features a double bass staff with a treble clef and a key signature of one sharp (F#), and a grand staff with a treble clef and the same key signature. The tempo is marked 'Allegro Moderato'. The music begins with a double bar line and a repeat sign.

D. BASS 

5

This system contains measures 5 through 8. The double bass staff continues with a melodic line, while the piano/viola grand staff provides harmonic accompaniment with chords and some melodic fragments.



8

This system contains measures 9 through 12. The double bass staff continues its melodic development, and the piano/viola grand staff accompaniment becomes more active with some sixteenth-note patterns.



12

This system contains measures 13 through 16. The double bass staff continues with a melodic line, and the piano/viola grand staff accompaniment features some chords and melodic fragments.

6

*piu lento a tempo*

*piu lento a tempo*

20

*rall.*

*rall.*

24

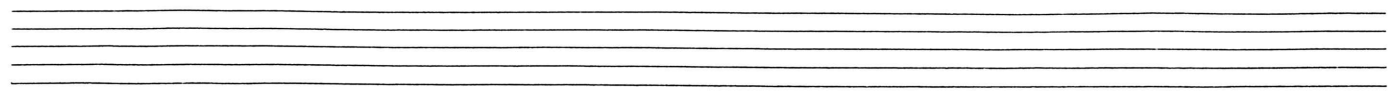
*mesto*

28

Handwritten musical score for guitar, consisting of five systems of staves. Each system includes a bass line and a treble line, with various musical notations such as notes, rests, and chords. The score includes several performance instructions:

- System 2:** *Ritardo* (written above the treble staff).
- System 4:** *piu lento* (written below the bass staff) and *atempo* (written below the treble staff).
- System 5:** *atempo* (written below the bass staff).

The score is marked with system numbers 2, 6, 3, and 4 on the left side. The notation includes various rhythmic values, accidentals (sharps and naturals), and dynamic markings. The bass line often features complex rhythmic patterns, while the treble line focuses on chordal accompaniment and melodic lines.



Handwritten musical notation on a single staff, featuring a series of notes with stems and beams, some marked with '+' signs.

*rit* *A tempo*

Handwritten musical notation for measures 48-51, consisting of two staves (treble and bass clef) with notes and rests. The tempo markings *rit* and *A tempo* are present.

Handwritten musical notation on a single staff, showing a few notes and rests.

Handwritten musical notation for measures 52-55, consisting of two staves (treble and bass clef) with notes and rests.

Handwritten musical notation for measures 56-57, consisting of two staves (treble and bass clef) with notes and rests. A vertical line separates the two measures.

19 Sept '00

Four empty musical staves at the bottom of the page.