



WEST VALLEY
CHRISTIAN ACADEMY
PRESCHOOL - 8TH

West Valley Christian Academy

REOPENING PLAN

Preschool- Eighth Grade



TABLE OF CONTENTS

- 3 Overview**
- 4 Staff Training & Parent Education**
- 5 Ongoing Monitoring & Family Engagement**
- 6 Instructional Scheduling & Physical Distancing**
- 7 Entrance, Egress, and Movement within the School**
- 8 Health Screenings, Exclusions & Positive Test Results**
- 10 Testing of Students & Staff; Triggers for Switching to Distance Learning**
- 11 Healthy Hygiene Practices**
- 12 Face Coverings**
- 13 Cleaning, Sanitizing, Disinfecting & Ventilation**
- 14 Stay Connected- Communication**



OVERVIEW

WVCA Preschool- Eight Grade is committed to developing and implementing a reopening plan that is aligned with the most updated public health guidance, and tailored to the unique small school setting, on a large physical campus in response to the COVID-19 pandemic.

This plan is based on the most updated guidance currently available, and will be monitored as new information is released by both the State and County Public Health Departments.

We hope that this document serves as both our plan of reopening as well as a window to our philosophical approach that values parent choice and informed decision making.

WVCA Preschool - Eighth Grade exists to provide a Christ, family, and child focused school community committed to the core values of Safety, Education, and Environment.

WVCA Preschool- Eighth Grade is committed to creating a school atmosphere that balances sound health and safety practices founded by guidance and regulations while balancing the prioritization of our student's mental and spiritual health, social wellness, and access to both a quality education, and an authentic childhood experience.



STAFF TRAINING & PARENT EDUCATION



Staff Training

WVCA is committed to ensuring staff are well informed and educated on the preventative health practices related to stopping the spread of COVID-19. Administration provides employees all updated regulations and links to resources for further details.

Administration has provided an all staff training on the re-opening plan for understanding, and effective implementation.

All staff have successfully completed Preventative Health and Safety Training that includes universal precautions to limit the spread of germs.

Ongoing training and professional development will be provided as information changes, and as access to further training from the CDC and public health departments are provided.

Parent Education

The WVCA parent community is central to a successful school opening. All of our parents have been provided the re-opening plan for their individual review, and scheduled orientations with teaching staff to review any questions or concerns for clarity.

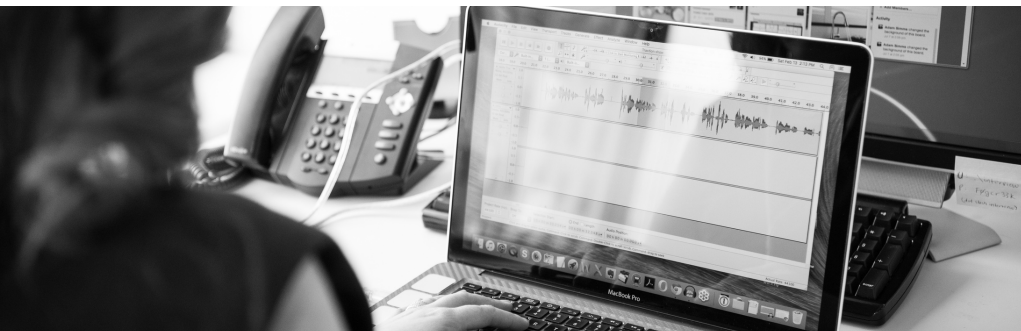
School Administrators are available for individual consultation in response to parent's requests for understanding, in addition to areas of conflict requiring resolution for the health and safety of the school.

ONGOING MONITORING

West Valley Christian Academy understands that the response to COVID-19 is fluid and rapidly changing. Our Administration Team monitors updates daily, and is prepared to adjust and adapt as required.

The reopening plan is based on the ongoing guidance from:

- City of Tracy
 - <https://www.ci.tracy.ca.us/?navid=10802>
- San Joaquin County Public Health Department
 - <http://www.sjcphs.org/>
- California Public health Department
 - <https://www.cdph.ca.gov/>



FAMILY ENGAGEMENT

WVCA Families are partners in education, and now in the health and safety of our school community more than ever. WVCA will be depending heavily on families to keep children home with any symptoms of illness.

The ability to maintain onsite learning hinges on everyone's commitment to keeping COVID-19 out of our school to the greatest extent possible.

Children who suffer regularly from allergies will be required to have a doctor note on file indicating their allergy symptoms to be permitted on campus, and to avoid chronic absenteeism.

**Active & engaged partnerships
with parents
is critical
to the succesful implementation
of the
WVCA Reopening Plan.**



INSTRUCTIONAL SCHEDULING & PHYSICAL DISTANCING

Onsite Monday-Friday

Low teacher to child ratios allow for WVCA PS-8 to accommodate students onsite for five full school days per week, and optional distance learning for enrolled families.

Classroom Cohort to Limit Cross Exposure

Students will be kept in classroom cohorts by grade level for all activities of the day including child care, recess, lunch, and classroom instruction.

The schedule of the school day includes intentional transition time to avoid cross exposure from movement from one activity to the next for all cohorts.

Chapel will continue within the classroom cohorts. For where two or three gather in my name, there am I with them. Matthew 18:20 NIV

Small Class Size & Physical Distancing Measures

WVCA K-8 classrooms with 9 or less students can accommodate the 6ft physical distance guidance. See first picture.

Classrooms can accommodate up to 18 students implementing additional precautions including physical layout, furniture barriers, as well as Plexiglas dividers. See second picture.

Teaching and Reinforcing Physical Distancing

WVCA will teach and reinforce the importance of physical distancing by partnering with students and teacher aides. The teaching goal will be to develop the understanding that physical distancing is a measure to prevent the spread of illness. Child friendly materials like pool noodles, hula hoops, cones, and jump ropes are used to provide concrete examples of physical distancing for activities and movement through the day.



ENTRANCE, EGRESS, AND MOVEMENT WITHIN THE SCHOOL

Entrance

Students have flexible drop-off time between 8:15 AM-8:30 AM. Parents are to remain in their vehicles, and drive-up to the student drop-off location, where students will be received by a school employee one family at a time.

Students will go directly to their cohort classrooms following the marked arrows that provide movement direction, under the supervision of their teacher until class begins.



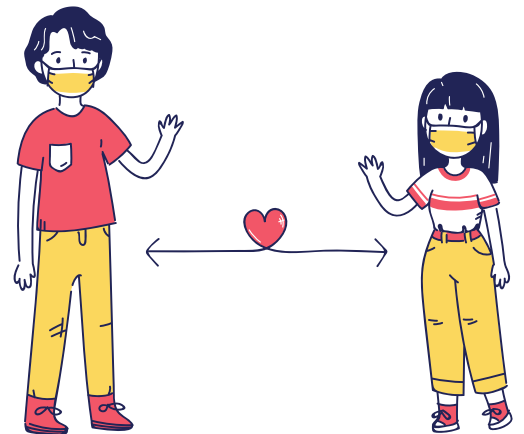
Egress

The campus has been marked with blue tape indicating physical distancing if lines develop, arrows for directionality. All doors have been labeled with entrance and exit to ensure a smooth flow of traffic, and avoid any close contact with other students or employees within movement.



Movement within the School

The school schedule has been developed with intention to avoid close contact among cohorts. Recess, lunches, instruction, and pick-up have been scheduled staggered individually for each cohort with transition times between cohort to allow for cleaning and disinfecting between groups.



HEALTH SCREENINGS, EXCLUSIONS & POSITIVE TEST PROCEDURES



Health Screenings

In order to prevent the spread of infection students, teachers, and other school employees who have signs/symptoms of COVID-19 must stay home according to the California Department of Public health. Symptoms of COVID-19 include:

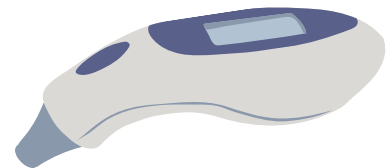
- Fever (100.4 F)
- Cough
- Shortness of Breath or difficulty breathing
- Chills/Repeated Shaking
- Fatigue
- Muscle Pain
- Headache
- Sore Throat
- Congestion or Runny Nose
- Nausea or vomiting
- Diarrhea
- New loss of taste or smell

Before School Family Screening

Families must complete a home health screening before coming to school each day, including a temperature check. Children who have been exposed to a person who has tested positive for COVID-19, has been in close contact with a positive COVID-19 case, or is actively displaying any of the COVID-19 symptoms, with or without fever, must stay home.

If a student is required to quarantine they will be transitioned to distance learning. This decision will be made in partnership with school administration, family, and public health official guidance. See P7

WVCA Health Screening and Monitoring



WVCA Staff Members will conduct visual health checks upon school arrival daily, and will conduct random, and on demand temperature checks 2-3 times per week.

If a child becomes ill while at school, they will immediately be excluded from their cohort, and isolated in our illness location in the front lobby. An emergency pick-up person will be contacted for immediate pick-up, not to exceed 15 minutes.

Children exhibiting any COVID-19 symptoms will not be permitted and/or excluded until symptom free, or a negative COVID-19 test is provided.

HEALTH SCREENINGS, EXCLUSIONS & POSITIVE TEST PROCEDURES CONT.



Symptoms, Contact, and Positive Test Procedures

In the event that a student, teacher, or staff member has symptoms, is in contact, of someone infected, or is diagnosed with COVID-19 **Designated Person and title** will follow the following steps as outlined by the CA Department of Public Health. These steps can be impacted by county public health official specific guidance.

COVID-19 Symptoms

- Send home
- Recommend testing if possible
- School/Classroom remain open
- Can return when symptom free, or a negative test result

Close Contact with a confirmed case of COVID-19

- Send home
- Quarantine for 14 days from last exposure
- Recommend testing (result will not shorten 14 day quarantine)
- School/Classroom remain open
- Exposure Notice sent to families
- **Preschool Only-** Notify Community Care Licensing in an Unusual Incident Report and follow further guidance.

Confirmed COVID-19 Case Infection

- Notify the local public health department.
- Isolate case and exclude from school for at least 10 days from symptom onset or test date
- Identify contacts, quarantine and exclude exposed contacts for 14 days after the last date the case was present at school while infectious
- Recommend testing to contacts
- Disinfecting and Cleaning of classroom and spaces case spent significant time
- School remain open
- Exposure Notice sent to families to observe for, and stay home if symptoms appear
- Can return after 24 HRS after symptoms resolve

Resource

<https://www.cdph.ca.gov/Programs/CID/DCDC/CDPH%20Document%20Library/COVID-19/Schools%20Reopening%20Recommendations.pdf>

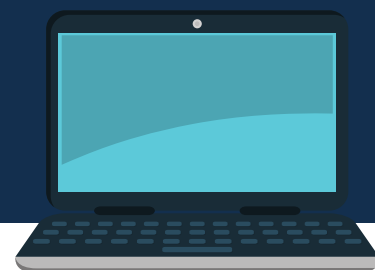
TESTING OF STUDENTS & STAFF



WVCA Staff are encouraged to be in communication with their general practitioner to determine individual needs for periodic testing. In the event of an exposure employees are first encouraged to contact their health care provider for testing, and if testing is unavailable or not prescribed WVCA refers staff to projectbaseline.com for free testing.

WVCA families are encouraged to be in communication with their child's pediatrician to determine individual needs for periodic testing, especially to determine cases of asymptomatic cases of COVID-19 onsite. In the event of an exposure, families are encouraged to have their children tested through their personal pediatrician office or access free local testing sites through projectbaseline.com.

TRIGGERS FOR SWITCHING TO DISTANCE LEARNING



Criteria to Determine School Closure and/or Prohibit In-person Instruction for Individuals and/or Cohorts

WVCA K-8 utilizes Schoology Learning Management System to provide distance learning. The system is in place, and is in ongoing use for a variety of it's tools. Individual and/or cohort mandated exposure or positive COVID-19 infection will be the trigger to engage in the distance learning features of the platform to ensure consistency of access to learning.

Healthy Hygiene Practices



Hand Washing

Hand washing will be taught, modeled, and frequently reminded to be done at important times of day including, but not limited to:

- After touching face, nose, or mouth
- After bathroom use
- Before mealtimes
- Upon entry from outdoors
- After using shared materials

When hand washing is not easily applicable, students, teachers, and staff will have access hand sanitizer stations at each classroom and outside spaces.

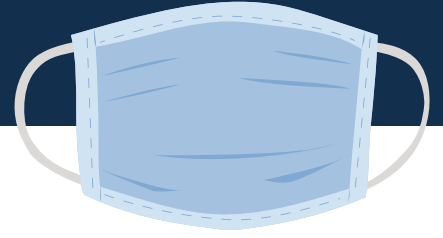
No touch hand sanitizer stations are in each classroom. Hand sanitizer will contain at least 60 % ethanol alcohol as recommend. Elementary students will be supervised when using hand sanitizer.

Washing your hands with a soap for 20 seconds is one of the most effective ways to prevent the spread of infections.
-CDC

Face Coverings

All Face Covering Procedures are mandated by the CA Public Health Department. Supporting guidance can be located at the following link:

https://www.cdph.ca.gov/Programs/CID/DCDC/CDPH%20Document%20Library/COVID-19/Guidance-for-Face-Coverings_06-18-2020.pdf



Teachers & Staff

All WVCA Teachers and Staff will wear a face covering (cloth mask and/or face shield). Staff exempt of wearing face coverings only at times where they are isolated per guidance.

Teachers or staff who are exempt for medical reasons will wear a face shield.

Staff who prepare or serve meals will wear face coverings, and wear gloves.

Students

When face coverings are required, they must be worn indoors. They can be removed during outdoor physical activities, and meal times.

Preschool Children Under 2

Children under two should not wear a face covering.

Age 2- Grade 2

It is highly encouraged for children 2-Grade 2 to wear face covering or shield while indoors.

Grade 3-Grade 8

Children in this grade range are required to wear a face covering or face shield to school.

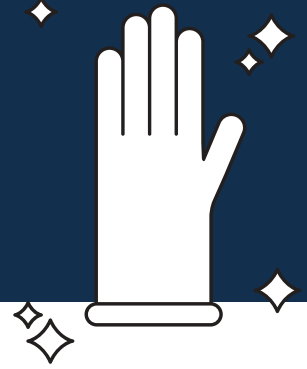
Students not exempt, and refusing to wear a face covering will be excluded from school. School will provide disposable face covering for students who intermittently forgot to bring a mask to avoid exclusion.

Face Covering Exemptions

Any student, teacher or staff who believe the exemption criteria should wear a non-restrictive alternative, like a face shield.

Exemptions for no face covering must be made by a doctor, and have a doctor note provided to the school.

Cleaning, Sanitizing, Disinfecting, and Ventilation



Cleaning Products & Services

WVCA is a participant of The Healthy School's Act, and all products used on school site are BPA approved.

Some products include:

- Bleach & Water Solution
- Clorox Wipes
- Seventh Generation Disinfectant
- Lysol

WVCA has a contracted janitorial service that provides daily disinfecting of bathrooms, kitchens, offices, and classrooms in addition to staff periodic cleaning measures throughout the day.

Shared Items & Frequently Touched Surfaces

A regular cleaning schedule will be followed throughout the school year.

Typically shared items in the classrooms are being provided to individual students to eliminate shared materials when possible. Items that cannot be shared will be cleaned and disinfected between uses.

Water Fountains are not in functional use to eliminate this sharing item. Students must bring a water bottle daily, and school will provide a water bottle if a student forgets.

Frequently touched surfaces are incorporated into the cleaning schedule and include:

- Door Handles
- Light Switches
- Sink Handles
- Bathroom Surfaces (hourly)
- Tables
- Student Desks
- Chairs

Ventilation

All WVCA air filters are high performance, and changed every 90 days. Natural ventilation will be provided with open windows, and outside learning opportunities daily.

Stay Connected

Primary location to find all COVID-19 updates for WVCA will be located on our website at www.WestValleyChristianAcademy.com



In case of an exposure all family's primary authorized representative will be notified with a phone call, email, and website will be updated.

Through Prayer

Pray for continual health and safety for our community as well as guidance for our national and local leaders.

Find Answers

Maintain open communication with your school administration team with any questions or concerns to be addressed for the entire WVCA Community. We need and rely on your partnership, input, and insight for consideration with every school decision made.

Check Email Frequently

Updates will be sent to families before posted on the website or to social media.

Engage on Social Media

Follow K-8 @WVCAcougars on Facebook
Follow Preschool @WVCAPreschool on Facebook



WEST VALLEY
CHRISTIAN ACADEMY
PRESCHOOL - 8TH