

LIBERTY CENTER

Eunice Community Concert Band & Choir, Inc.
presents

A Jolly Jangling Christmas

December 8 & 9, 2016
7:00P.M.

EUNICE, LOUISIANA

OUR 54th CONCERT

1990

TWENTY-SIXTH ANNIVERSARY

2016

PROGRAM

- At Christmas** arr. Mac Huff
- Christmas (Baby Please Come Home)** arr. Kirby Shaw
- All I Want for Christmas Is You** arr. Mac Huff
- Baby Jesus, We Love You** arr. Dean Diehl
- Here Comes Santa Claus** arr. Paul Murtha
- All Is Calm** arr. Robert W. Smith
- Holiday Galop** Randall Standridge

INTERMISSION

- Winter Holiday** arr. James Swearingen
Let It Snow! Let It Snow! Let It Snow! • Winter Wonderland • Frosty the Snowman
- Toboggan Ride** Stan Applebaum
- Hotta Chocolatta** arr. Kirby Shaw
- Candy Cane Lane** arr. Greg Gilpin
- Christmas Chopsticks** arr. Audrey Snyder
Four-Hand Piano Accompaniment featuring Connie Beough & Jan Carboni
- Audience Sing-A-Long*
- A Christmas Portrait** arr. Jerry Nowak
It's Beginning To Look Like Christmas • The Christmas Song (Chestnuts
Roasting On An Open Fire) • We Need A Little Christmas



MEMBERS

FLUTE

Martha Bryant Breaux Bridge
Patricia Dossman Eunice
Nicholas Rougeau Eunice

CLARINET

Lou Arton Jeanerette
Sonya Castille New Iberia
Mary DeLaune Youngsville
Megan LeDoux Iota
Laura Viator New Iberia

SAXOPHONE

Annie Cormier Church Point
Ian Fontenot Basile
Brock Guidry Iota
Art Riedel Lafayette

TRUMPET

Glenn Durbin Eunice
Jerry Fruge' Loreauville
Cindy Mouton Scott
Joshua Stemplewski Iota

TROMBONE

Jimi Bergeron Basile
Mike Boudreaux Lafayette
Dwight Manuel Lafayette

BARITONE

Terry Arton Jeanerette

TUBA

Joseph Stemplewski Iota

KEYBOARD

Connie C. Beaugh Eunice
Jan Carboni Lafayette

PERCUSSION

Caroline Fruge Rayne
Connor Jodon Eunice
Keith Jodon Eunice
Parker Jodon Eunice
Austin Stanford Chataignier

GENERAL MANAGER / COFOUNDER

Patricia Dossman Eunice

CONDUCTOR / COFOUNDER

Dwight Jodon Eunice

SOPRANO

Jan Carboni Lafayette
Patricia Dossman Eunice
Marian Fruge' Loreauville
Martha Gallow Eunice
Shirley Jodon Eunice
Rachel LaFargue Eunice
Rebecca Leger Eunice
Brenda LeJeune Eunice
Lorena Poullard Eunice
Sarah Pulling Eunice
Sandy Reiners Opelousas

ALTO

Callie Dischler Eunice
Jenna Estes Eunice
Jennifer Fowler Eunice
Maecy Fruge' Eunice
Victoria Fruge' Eunice
Cathy Hoyt Crowley
Ginger Jernigan Eunice
Linda LaFleur Eunice

TENOR

Richard Davis Eunice
Ed Deshautelle Eunice
Robert Leger Eunice

BASS

Jerry Fruge' Loreauville
Deyo Jodon Eunice

PIANO ACCOMPANIST

Connie C. Beaugh Eunice

MASTER OF CEREMONIES

Stephen Guempel Eunice



RHONDA FINK MOSER, O.D.
SARAH MOSER FRUGE', O.D.

301 S. SECOND STREET
P.O. BOX 511
EUNICE, LA 70535
PH: 337-457-2376



H
OH
OHO
HOHO
HOHOH
OHOHOH
OHOHOH
HO HO HO



Thanks to the Eunice
community for over 75
years of business!

Port of Krotz Springs St. Landry Parish State of Louisiana



E. Lynn LeJeune
Executive Director

Where the inland waterways,
with our connections to the deep
draft and coastal waterways, rivers,
bayous and locks, are the
links to international
trade for our
Louisiana
farmers and
manufacturers.



EUNICE MEDICAL LABORATORY, INC.

DAVID DARBONNE, MT (ASCP)

450 Moosa Blvd., Ste. C
Eunice, Louisiana 70535



Come see us for all your blood and labwork needs

Open 7am-5pm, Monday-Friday

Insurance, Medicare & Medicaid Accepted, 337-457-5562



Special Thanks to
First Baptist Church
*for providing the Community Choir
& Children's Choir
with rehearsal facilities!*

fbce.net

Congratulations & Merry Christmas to the ECCBC Tenor Section!

from Troy Breaux, CPA (Tenor)



McDonald's
Celebrating
Over Thirty
i'm lovin' it Years
in Eunice!

HEBERT MEDICAL GROUP, APMC
3521 Hwy. 190, Ste. S - Eunice, LA 70535

Charice M. Hebert, M.D.
Richard L. Hebert, II, M.D.
Donald W. Barnes, M.D.



Iberia Community Band
NEW IBERIA, LA

CHRISTMAS PERFORMANCES

Mon, December 12, 7:00pm
Acadian Village, Lafayette

Sat, December 17, 5:30pm
St. Theresa Hall, Loreauville

[facebook.com/IberiaCommunityBand](https://www.facebook.com/IberiaCommunityBand)



Robert J. Fontenot
Owner/President
Carlenne Darbonne
Assistant Manager
Over 50 Years In Business
360 E Laurel • Eunice, LA
457-4459



10-MINUTE OIL CHANGE
1530 West Laurel, Eunice
Monday-Saturday

Mark & Rebecca Daigle
Owners
337-546-0014

Kiwanis
Young Children
Priority One



337.304.1727

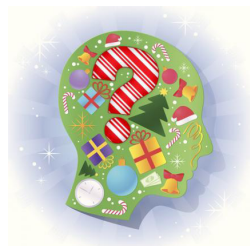
www.cypressgroveplace.com

EUNICE ROTARY CLUB

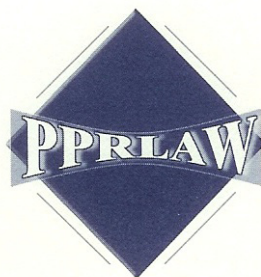


Christmas Trivia

1. What Christmas ballet is the most famous of all?
2. Where was Mommy kissing Santa Claus?
3. Who wrote the song, *Here Comes Santa Claus*?
4. What does Alvin want for Christmas?
5. What should little children leave out for Santa on Christmas Eve?
6. What is Frosty the Snowman's nose made of?
7. Who is Ebenezer?
8. What color is the Grinch?
9. Which reindeer's name starts with a "B"?
10. Which of the reindeer does not belong in this list: Dancer, Comet, Roger, Dasher?



1. The Nutcracker
2. Under the Mistletoe
3. Gene Autry
4. A Hula Hoop
5. Cookies & Milk
6. A Button
7. The Scrooge
8. Green
9. Blitzen
10. Roger



PUCHEU, PUCHEU & ROBINSON, LLP
Attorneys At Law

Bijous
in the Cottage
Dana Gautreaux
Owner
bijous@bellsouth.net

2120 W. Laurel Ave
Eunice, LA 70535
337-457-2202
Fax: 337-457-2297



337-457-7138

Burgers • Seafood
PoBoys • Ice Cream
Breakfast



KENDALL FONTENOT

Agent

StateFarm.com

1110 W. Laurel
Eunice, LA 70535

Phone:
337-546-6501



Tim P. Fontenot, D.D.S.
Tim S. Fontenot, D.D.S.

General Dentistry

www.fontenotdds.com Tel: (337) 457-1342
149 N. 3rd St. Eunice, LA 70535 Fax: (337) 457-1354

Joining
THE
ECCBC

The organization welcomes anyone who wishes to participate. There are no dues or auditions. Our sole purpose is to enjoy music and share it with others. Joining is easy! Simply call 337.457.1776, write for information (P.O. Drawer 912, Eunice, LA 70535), or complete one of the membership forms in the lobby tonight. ☘

**DATES OF OUR
2017 SUMMER
CONCERT:
July 13 & 14
Thursday & Friday
ECCBC
EUNICE COMMUNITY CONCERT BAND & CHOIR**



CROWLEY, LOUISIANA



Tommy Hillman DDS
Lake Charles, LA
337.478.0531
Dentures in one day!
Immediate Dentures / Partial Dentures

Acadia Stor & Lok

Locally Owned & Operated
On Site Management
Climate Control Available
2 convenient locations

716 Crowley - Rayne Hwy
P.O. Box 365
Crowley, La 70527



Phone: 337-783-3431
Cell: 337-581-1445



café mosaic

MON - SAT 6AM-10PM
SUN 7AM-7PM

337.546.6276

202 S 2ND ST
EUNICE, LA 70535



NEW YORK LIFE FOUNDATION

Jerry's
Furniture Mart, Inc.

**Merry
Christmas**

P.O. Box 286 EUNICE, LOUISIANA 70535
PHONE: 337-457-4272

Donald R. Richard, Jr.
ATTORNEY AT LAW

215 N. 2nd Street
Eunice, LA
337.546.3367



Guillory Oil Company, Inc.



P.O. Box 706
Eunice, LA
457-3384

RICE PALACE

A graphic of rice stalks and grains, with red lightning bolt-like shapes behind them.

CROWLEY, LOUISIANA



People First. Since 1922.

StLandryHomestead.com

Automobile Loans

What's Under Your Christmas Tree?

MEMBER FDIC EQUAL OPPORTUNITY LENDER



**St. Landry
HOMESTEAD**
Federal Savings Bank

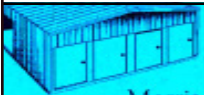
OPELOUSAS 337.948.3033 | EUNICE 337.457.8176 | PORT BARRE 337.585.2301

Basile High School Christmas Concert

**December 20th
Tuesday, 6:00pm**

St. Augustine
Catholic Church

2717 Third Street
Basile, LA



M. J.'s Mini Storage

Morris Johnwell
Owner

631 South St. Mary Rd.
Eunice, LA 70535

Night 337-457-4797
Cell 337-945-7568



Eunice, LA

Oct 28 & 29, 2017

www.ExperienceLouisiana.org
To volunteer, call 337.457.1776

CONCERT TITLES

1990	July	<i>A Family Concert of Patriotism and Americana</i>
	Dec	<i>A Caroling Christmas</i>
1991	July	<i>A Grand Ole Summer</i>
	Dec	<i>Coming Home for Christmas</i>
1992	July	<i>Spirit of the South</i>
	Dec	<i>A Very Merry Christmas</i>
1993	July	<i>Rhapsody</i>
	Dec	<i>A Storybook Christmas</i>
1994	July	<i>Centennial</i>
	Dec	<i>The Most Wonderful Time of the Year</i>
1995	July	<i>For America</i>
	Dec	<i>A Kid's Christmas</i>
1996	July	<i>Regards to Broadway</i>
	Dec	<i>Season of Dreams</i>
1997	July	<i>Back in the Good Old Days</i>
	Dec	<i>It's Christmas</i>
1998	July	<i>Razzle Dazzle</i>
	Dec	<i>Candy Canes and Christmas</i>
1999	July	<i>Swing</i>
	Dec	<i>One Magic Christmas</i>
2000	July	<i>Celebrate 2000</i>
	Dec	<i>Gloria!</i>
2001	July	<i>Dare to Dream</i>
	Dec	<i>Sing We Now of Christmas</i>
2002	July	<i>America: My Home</i>
	Dec	<i>Christmas Joy</i>
2003	July	<i>That's Entertainment</i>
	Dec	<i>Jubilate</i>
2004	July	<i>Summer Serenade</i>
	Dec	<i>Sing Noel</i>
2005	July	<i>Encore!</i>
	Dec	<i>A Christmas Festival</i>
2006	July	<i>Viva Musica!</i>
	Dec	<i>The Spirit of Christmas</i>
2007	July	<i>Star-Spangled Summer</i>
	Dec	<i>Fireside Christmas</i>
2008	July	<i>Rhythm of Life</i>
	Dec	<i>Celebrate Christmas</i>
2009	July	<i>Sounds Like Summer</i>
	Dec	<i>Laughing All the Way</i>
2010	July	<i>Thanks for the Memories</i>
	Dec	<i>Bells of Joy</i>
2011	July	<i>It's Showtime!</i>
	Dec	<i>Noel</i>
2012	July	<i>Let Me Entertain You!</i>
	Dec	<i>Good Tidings To All</i>
2013	July	<i>Let Freedom Ring</i>
	Dec	<i>Christmas Peace</i>
2014	July	<i>Sweet Sounds of Summer</i>
	Dec	<i>Merry Christmas Everyone</i>
2015	July	<i>25th Anniversary Concert</i>
	Dec	<i>On With the Snow!</i>
2016	July	<i>Summer Pops!</i>
	Dec	<i>A Jolly Jangling Christmas</i>

PERFORMING ARTS OPPORTUNITIES

- ♦ Saenger Theatre, **Santa Meets Sousa, Marine Corps Band New Orleans (FREE)** – December 10, New Orleans
- ♦ Iberia Community Band, **Christmas Concert at Acadian Village** – December 12, Lafayette
- ♦ Saenger Theatre, **Jersey Boys** – December 13-18, New Orleans
- ♦ Acadiana Center for the Arts, **It's a Wonderful Life** – December 14-15, Lafayette
- ♦ Heymann Center, **ASO: A Magical Christmas** – December 15, Lafayette
- ♦ Iberia Community Band, **Christmas Concert at St. Theresa Hall** – December 17, Loreauville
- ♦ Raising Cane's River Center, **The Nutcracker - A Tale from the Bayou** – Dec 17-18, Baton Rouge
- ♦ Basile High School Christmas Program, **St. Augustine Catholic Church** – December 20, Basile
- ♦ Cajundome, **Disney LIVE!** – December 21, Lafayette
- ♦ Raising Cane's River Center, **Disney Magic!** – December 22, Baton Rouge
- ♦ Lutcher Theater, **Broadway Christmas Wonderland** – December 22, Orange, TX
- ♦ Saenger Theatre, **Moscow Ballet's Great Russian Nutcracker** – December 23, New Orleans

2017

- ♦ Saenger Theatre, **The Lion King** – January 4-29, New Orleans
- ♦ Raising Cane's River Center, **Black Jacket Symphony** – January 7, Baton Rouge
- ♦ Heymann Center, **Rodgers & Hammerstein's Cinderella** – January 10, Lafayette
- ♦ Raising Cane's River Center, **Rodgers & Hammerstein's Cinderella** – January 12, Baton Rouge
- ♦ Grand Opera House, **Mandy Barnette** – January 12, Crowley
- ♦ Cajundome, **The Original Harlem Globetrotters** – January 15, Lafayette
- ♦ Lutcher Theater, **Pippin** – January 28, Orange, TX
- ♦ Raising Cane's River Center, **Pippin** – January 30, Baton Rouge
- ♦ Raising Cane's River Center, **Daniel Tiger's Neighborhood Live!** – January 31, Baton Rouge
- ♦ Cajundome, **Toby Mac "HITS DEEP Tour"** – February 10, Lafayette
- ♦ Lutcher Theater, **Into The Woods** – February 21-22, Orange, TX
- ♦ Lutcher Theater, **Barefoot in the Park** – March 3, Orange, TX
- ♦ Heymann Center, **ASO presents Perfectly Frank, A Century of Sinatra** – March 4, Lafayette
- ♦ Saenger Theatre, **Norah Jones** – March 4, New Orleans
- ♦ Lutcher Theater, **The Illusionists** – March 10, Orange, TX
- ♦ Saenger Theatre, **The Price Is Right LIVE!** – March 14, New Orleans
- ♦ Grand Opera House, **Route 66: Jukebox Musical** – March 14, Crowley
- ♦ Saenger Theatre, **Chicago Live in Concert** – March 21, New Orleans
- ♦ Heymann Center, **The Illusionists** – March 29, Lafayette
- ♦ Grand Opera House, **Mandy Harvey** – April 1, Crowley
- ♦ Lutcher Theater, **Greater Tuna** – April 4, Orange, TX
- ♦ Saenger Theatre, **The Bodyguard** – April 4-9, New Orleans
- ♦ Raising Cane's River Center, **Rapunzel** – April 7, Baton Rouge
- ♦ Lutcher Theater, **Once** – April 15, Orange, TX
- ♦ Cajundome, **Casting Crowns** – April 20, Lafayette
- ♦ Raising Cane's River Center, **Jeff Dunham: Perfectly Unbalanced** – April 22, Baton Rouge

ST. LANDRY PARISH TOURIST COMMISSION cajuntravel.com

DRUM CORPS INTERNATIONAL dci.org

ACADIANA SYMPHONY ORCHESTRA acadianasymphony.org

SAENGER THEATRE saengernola.com

GRAND OPERA HOUSE thegrandoperahouse.org

MAHALIA JACKSON THEATER mahaliajacksontheater.com

ACADIANA CENTER FOR THE ARTS acadianacenterforthearts.org

HEYMANN CENTER heymann-center.com

RAISING CANE'S RIVER CENTER raisingcanesrivercenter.com

CAJUNDOME cajundome.com

NEW ORLEANS OPERA ASSOCIATION neworleansopera.org

LUTCHER THEATER lutcher.org

Vige, Tujague & Noel



Certified
Public
Accountants

151 N. 2nd Street
Eunice, LA
457-9324

DR. & MRS. REGINALD SEGAR



BECKY & BRIAN TANNER

BR A V O !



Crock Pot Peppermint Mocha Recipe!

Just 4 Ingredients

Author: The Frugal Girls

Prep time: 10 mins | **Cook time:** 2 hours | **Total time:** 2 hours 10 mins |
Serves: 8

CROCK POT

PEPPERMINT

Mocha

at TheFrugalGirls.com

Ingredients

- 4½ cups Hot Starbucks French Roast Brewed Coffee
- 2¼ cups Whole Milk
- 1½ cups Chocolate Syrup
- ½ cup Starbucks Peppermint Syrup
- Optional: Whip Cream and Crushed Candy Canes

Instructions

1. Brew Coffee.
2. Pour Coffee, Milk, Chocolate Syrup, and Peppermint Syrup in Crock Pot, stir well, and cover with lid.
3. Cook on HIGH for 2 hours or LOW for 4 hours, or until hot, stirring occasionally.
4. Scoop into mugs to serve, and top with Whip Cream and crushed Candy Canes or Peppermint Candies.
5. Let simmer on LOW or WARM setting to serve during parties. ENJOY!



Carol & Company

HAIR SALON & BODY TONING SERVICES

Carol A. Arvie
Cosmetologist/Owner

430 Congress Street
Opelousas, LA 70570

Tuesday - Friday
8:00a.m. - 12:00p.m. 2:00p.m. - 8:00p.m.

337-948-9149



Beta Sigma Phi

EUNICE

GLENN DURBIN

Income Tax Preparation

34 Years Experience

Specializing in individual &
small business tax returns

BY APPOINTMENT ONLY:
CALL (337) 546-6476



Jason M. Smith,
D.C.

337-457-1376

Smith

FAMILY

Chiropractic & Wellness, LLC
www.SmithfamilyChiropractic.net

200 N. 2nd St.
Eunice, LA 70535

Twisted Wings

1669 Hwy 190 W. Laurel
Eunice, LA
337-466-3993



Clay M. Duos, D.D.S.

GENERAL DENTISTRY

481 MOOSA BLVD.
EUNICE, LA 70535
TELEPHONE (337) 457-9035
www.drduos.com

Clivia Aubrie, R.D.H.
Cindy Kerwin, R.D.H.
DENTAL HYGIENISTS



24 HOUR NOTICE NECESSARY FOR CANCELLATION

MERRY CHRISTMAS

charles Quillard

agency, inc.



1241 E. Laurel
457-5231

PICOU'S

PHONE 457-2218

DRUG STORE

260 N. 2nd. St.
EUNICE, LA 70535

OXYGEN - ACETYLENE - INDUSTRIAL GAS
WELDING MACHINE REPAIRS - TORCH & REGULATOR REPAIRS

EUNICE
337-457-9348

LAFAYETTE
337-637-6781

TOMMY HORMELL



ALEXANDRIA
318-443-6386

JENNINGS
337-616-1821

WESTLAKE
337-683-4960

THE
Organization
Established in 1990

The Eunice Community Concert Band & Choir, Inc. was organized in February of 1990 with the intent to promote vocal and instrumental music in Eunice and the surrounding area. The organization is open to anyone who enjoys and appreciates vocal and instrumental music. There are no auditions or dues. We depend solely on the contributions of merchants and individuals and provide two concerts each year, July and December. The organization is operated by volunteers and pays no salaries.

In the last twenty-six years the band and choir has produced fifty-three concerts. Also during these twenty-six years, we have provided music for: Eunice July Fourth celebrations, LSUE commencement exercises, city inaugurations, Eunice Centennial Celebration (performing an original work by Dr. Quincy Hilliard, ASCAP, commissioned by the ECCBC for the celebration), LSUE community fun days, Eunice Christmas celebrations, and presented concerts in Crowley, Oakdale, Ville Platte, Lafayette and New Iberia. Several members of the community choir participated in a concert at Carnegie Hall in New York City in 1994. Joining sing-

ers from across the country, the group was directed by Dr. James Haygood and world-renowned choral conductor John Rutter.

The ECCBC has enjoyed much success since 1990. Membership in the organization has grown to over 180. For any given concert there may be as few as forty or as many as eighty of those members performing on stage. For many, the rehearsal season provides a wholesome social activity and an opportunity to meet new friends.

The organization adds to the uniqueness of this city. *Very few* American cities the size of Eunice have a musical organization such as the ECCBC. We are proud of all that we have done and look forward to serving the Eunice area with quality, family programs for many years to come. ☚

CONTACT US:

ECCBC / P.O. Drawer 912

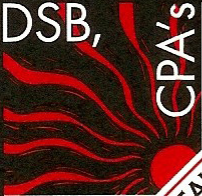
Eunice, Louisiana 70535

PH: 337.457.1776

Fax: 337.457.9543

Email: eccbc@eccbc.org

ECCBC.org



DSB, CPA's
DUGAS, SOILEAU & BREAU, L.L.C.
CERTIFIED PUBLIC ACCOUNTANTS

122 East 5th Street • Post Office Drawer 307
Crowley, LA 70527-0307
phone (337) 783-0650 fax (337) 783-7238



David Ltd.
HAIR & NAIL SALON

546-0163

DAVID W. MANUEL
Owner

204 S. Second
Eunice, LA 70535



**Don &
Debbie
Leonards**



OUR LOGO

In 1992, the ECCBC commissioned the University of Louisiana at Lafayette art department to create a logo for the organization. After a meeting with Dwight Jodon, Pat Dossman and the department, approximately fifteen art students set about the task of designing an appropriate ensignia.

Several of the proposed designs centered around the organization's acronym, ECCBC. However, the winning design was a simple graphic. It symbolizes the semicircle staging used by musical ensembles globally. The image is one *in motion* as the conductor's baton sweeps across the design. This particular logo was selected because of its simplicity and because the ECCBC is determined to move forward into the future with the mission of sharing the gift of music with the residents of Acadiana.

We are proud to celebrate our twenty-sixth birthday this year, and are excited about our future. It is our desire that this logo become...*a mark of excellence!*

<div data-bbox="72 657 239 917"> <p>FACE FINE ARTS COUNCIL OF EUNICE</p> </div> <div data-bbox="244 673 516 901"> <p>SUPPORT YOUR LOCAL ARTISTS <i>Become a patron ...</i></p> <p><u>Purchase local original artwork</u> <u>Invite FACE to exhibit at your function</u> <u>Help fund exhibitions</u></p> </div> <p>FMI call 337-224-8577</p>	<div data-bbox="547 625 1005 803"> <p>Thrifty Way Pharmacy of Basile</p> <p>Michelle Andrus, RPh. <i>Owner/Pharmacist</i></p> <p>P.O. Box 426 3131 Stagg Ave. Baskin, LA 70515</p> <p>Ph: 337-412-6642 Fax: 337-412-6606</p> </div> <div data-bbox="547 828 1005 990"> <p>JEFF DAVIS BANK www.jdbank.com Member FDIC</p> <p>P.O. Box 1089 - 300 West Park Eunice, LA 70535 (337) 457-7334 fax (337) 457-2265</p> </div>
<p>ZEB STEARNS, M.D.</p> <p>Family Practice Hours: M - F / 8:00 - 5:00</p> <p>450 Mcoosa Blvd., Ste. A Eunice, LA 70535 Phone: (337) 546-6646 Fax: (337) 546-0111</p>	<p><i>Petals & Pots</i> <i>Home Accents & Floral Designs</i></p> <p>Alison Comeaux 751 E. Laurel Ph: 337-550-1100</p>
<p>Ruby's Restaurant & Courtyard</p> <p>123 South One Eunice, LA 70535 337-550-7665</p> <p>HOURS LUNCH Mon. - Fri. 10am - 2pm</p> <p>EVENINGS Wed. & Thurs. Fri. & Sat. 5pm - 9pm 5pm - 10pm</p> <p>Ph: 337-550-7665 or 337-546-0983 Fax: 337-546-0904</p> <p>Serving up all the best in Cajun Cooking & Southern Charm!</p>	<p>LSUE EUNICE</p> <p>SUCCESS STARTS HERE.</p>

Children's Choir

Featured in Baby Jesus, We Love You

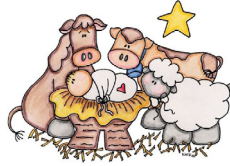
Connie C. Beagh, *Accompanist*

Megan LeDoux, *Assistant*

Suzanne LaHaye, *Assistant*

Carter Bertrand
Chloe Bollich
Amelie Broussard
Ava Grace Brown
Beau Brown
Ella Grace Brown
Taylor Carroll
William Carroll
Isaiah Darbonne
Mary Frances Darbonne
Matthias Darbonne
Cole Eddins
Garrett Eddins
Madeline Eddins

Gracey Ewing
Annelise Kate Fruge
John-Michael Fruge
Madelyn Marie Fruge
Mary Grace Fruge
Emmy Garcille
Emily Gaspard
Rafael Guzman
Hanson Jodon



Hadley Johnson
Audrey LeDoux
Shelby Niles
Ainslee Perry
Averi Pitre
Evelyn Pitre
Jahlinda Poullard
Everett Reppond
Josephine Rodriguez
Addelynn Thibodeaux
Brooklynn Thibodeaux
Grayson Thibodeaux
Lyla Thibodeaux
Wesley Thibodeaux



Like us on Facebook!

www.facebook.com/eccbc

EUNICE PLAYERS' THEATRE



For more information
call 546-0163

A non-profit community theatre in Eunice, LA that began its operation in 1969 and has been continually operating to this day. The board of directors oversees the production of four shows per year, completely produced by volunteers dedicated to bringing quality live theatrical performances to patrons of the Acadiana area.

The perfect holiday gift - a gift certificate to the Eunice Players' Theatre next season.

www.euniceplayers.blogspot.com



Harold Fontenot
Area Manager

251 E. Vine Ave.
Eunice, LA 70535

337-457-1772
FAX: 337-457-1778

**Darnall, Sikes,
Gardes &
Frederick**

*A Corporation
of Certified
Public Accountants*



Thank You

*We kindly
thank the
following
for their
assistance
with tonight's
production:*

Megan LeDoux
Deyo Jodon
Troy Breaux
Chris LeDoux

Jan Carboni
First Baptist
Church
Marcia Ortego
Berna Mire
Sarah Pulling
Tammy Stanford
Katie Stanford

The Chris Fruge'
Family
Suzanne LaHaye
Dustin Williamson
Christie Brammer
City of Eunice
Our Advertisers
The Eunice News

REHABXCEL **Physical Therapy & Sports Medicine**

Locally Owned and Operated

Michael Driggs, DPT & Lee Miller, DPT
441 Moosa Blvd (337) 457-8164
www.rehabxcelpt.com

Patricia G. Dossman, CLU, LUTCF, CLTC
Dwight R. Jodon, CLU, LUTCF, CLTC
Agents
New York Life Insurance Company

337.457.1776



Ardoin's FUNERAL HOMES

1301 W. Laurel - Eunice, LA 70535

www.ardoinfuneralhomes.com

Eunice - Ville Platte - Mamou - Basile - Iota

Serving Families Since 1938

337-457-3371

LIBERTY CENTER

Construction of this vaudeville silent movie house began in 1920. Financial failure halted construction on the *Electric Theater* with the outside walls only partially completed. Purchased by Claude Keller and A.F. McGee Sr., the theater was completed and opened July 19, 1924 as the New Liberty Theatre.

This *Premier Temple of Amusement*, is listed on the National Register of Historic Places by the United States Department of the Interior and has been included in the National Trust Guide of Great American Movie Theaters Preservation Press Guide published by the Smithsonian.



Dixie 
Titles & More, LLC
Becky & Mark Daigle

1830 West Laurel Ave
Eunice, LA 70535

Phone: 337-466-3777
Fax: 337-466-3631



Kermen D. Beauchamp, M.D.

DIPLOMATE, AMERICAN BOARD OF PEDIATRICS CHILDREN AND ADOLESCENT MEDICINE

Office Hours: Monday-Friday
9AM - 12 Noon & 1PM - 5PM

(337) 457-2301

3521 Hwy 190, Suite R, Eunice, LA 70535



We Take The Worry Out Of Water.

RainSoft[®]

Water Treatment Systems



337-237-1165

SUPERIORWATERLA.com

ACADIAN
MEDICAL CENTER
A CAMPUS OF MERCY REGIONAL MEDICAL CENTER

337-580-7500

www.acadianmedicalcenter.com

Drs. Miller and Miller

Now ***Vision Source***

Family Vision Care • Contact Lens Specialists
Diagnosis/Treatment of Eye Diseases • Refractive Surgery Co-Management

Dr. J.D. Miller, Jr.

Diplomate, American Board of Optometrist

350 Moosa Blvd. • Eunice, Louisiana 70535
Phone: 337-457-5277 Fax 337-457-5271
www.visionsource-djjack.com

Window Tinting

Guillory Professional Window Tinting

Radio, Amplifier & Alarm Installation • Running Boards
Ground Effects • Wheels • Head Liners • Sun Roofs • Fender Trim
Vent Shades • Bug Shields • Head & Tail Light Covers

3627 Highway 190 Eunice, LA 70535

337-457-0416

BRIAN GUILLORY, OWNER

Open
11a.m.
to
10p.m.



Dine In
or
Take Out

Phone
337-783-0339

2307 N. Parkerson
Crowley, Louisiana

Fax
337-785-0338

Monty N. Heinen

M.D.F.A.C.O.G.

Obstetrics & Gynecology



Mon. - Wed. 8:00-5:00

Thurs. 8:00-4:00

Friday 9:00-12:00

3448 Hwy. 190
Eunice, Louisiana 70535

Ph. 337-546-08DR
(8237)
Fax 337-550-7257



FRUGÉ LUMBER COMPANY
GENERAL CONTRACTORS

601 north eight street • Eunice, Louisiana 70535
phone (337) 457-3077

fax (337) 457-4129

The Flower House

Fresh & Silk Floral Arrangements-Plants
Gift Baskets-Balloon Bouquets-Unique Gift Items



Ethel Meche
(337) 546-0257

450 N. 2nd Street
Eunice, La. 70535

SMITH *True Value* HARDWARE

300 E. Laurel Phone: (318) 457-3113
Eunice, Louisiana 70535

Harry A. Smith, Jr. & Claire Smith
Owners

Call Us First for all of your home health needs!



Eunice Community Home Health

A Branch of Acadian HomeCare

3581 Hwy 190 | Eunice, LA | 337-550-0002

www.LHCGroup.com



BERTRAND'S
PRINTING & OFFICE SUPPLIES, INC.

Tel: 337-457-3609(P) -4198(O)

Fax: 337-457-7878(P) -3722(O)

FROM THE ECCBC FAMILY

IN LOVING
MEMORY of

BOBBIE DOUCET
Choir, Alto

CLAUDIA WOOD
Concert Band, String Bass



WHITNEY®



2250 W. Laurel Avenue
Eunice, LA 70535 337-457-3776



FUMC EUNICE

He is born! 

Eunice

ABOUT

Founded: 1894

Prairie Cajun Capital of LA

Mayor: Scott A. Fontenot

2010 Population: 10,398

Number of Households
2006-2010: 3,912

Land Area: 5.13 square miles

Parishes: St. Landry & Acadia

Source: US Census Bureau



THINGS TO DO

Eunice Depot Museum - South C.C. Duson

Drive one block east of the Liberty Center, closed Mondays

Jean Lafitte Prairie Acadian Culture Center - 250 West Park Avenue, Open

Daily (closed Christmas), National Park Service, U.S. Department of the Interior

The Liberty Center for the Performing Arts - Est. 1924, Corner of

Park Ave. & Second Streets, host to a wide variety of civic and cultural functions throughout the year

Rendez-Vous des Cajuns Cajun Music Radio & TV Show - Saturdays, 6:00pm, Liberty Center

Savoy Music Center Jam Session - Saturdays, 9:30-11:30am

Cajun Music Hall of Fame and Museum - South C.C. Duson Drive, a block east of the Liberty Center, open Tuesday-Saturday

Eunice Mardi Gras Festival - February 24-28, 2017

World Championship Crawfish Etouffee Cookoff - March 26, 2017

Eunice Festival of the Arts and LSU-E Community Day - LSU-E Campus 3rd Sunday in April, annually

Fourth of July Celebration - Fireworks at Eunice Recreation Center, July 4, annually

Experience Louisiana Festival - October annually, Campus of LSU Eunice

CITY OF EUNICE

Mayor Scott A. Fontenot

I. Jackson Burson,
Councilman at Large

COUNCIL MEMBERS

Jason Bertrand

Marion "Nootsie" Sattler

Germaine Simpson

Dale Soileau

*A wonderful place to live.
A musical place to visit.*



Grand Opera House
of the South
Crowley, Louisiana

TheGrandOperaHouse.org

- Mandy Barnette, January 12, '17
- Route 66: Jukebox Musical, March 14, '17
- Mandy Harvey, April 1, '17
- Broadway's Next Hit Musical, April 28, '17
- Kevin Spirtas, May 1, '17

The Grand
Opera House
of the South

505 N Parkerson
Avenue, Crowley, LA
337.785.0440



DR. CRAIG M. BRAMMER

OPTOMETRIST



419 N Avenue F
Crowley, LA 70526
337-783-3072





WoodmenLifeSM

Life Insurance Society, Maple Lodge 243
Eunice, LA

Life Insurance • Annuities • Investments

Cecil LeBleu Phone: 337-580-1174
Field Representative



Prairie Acadian Cultural Center **JEAN LAFITTE NATIONAL HISTORIC** **PARK & PRESERVE**

Discover the life of Louisiana's prairie Cajuns through ranger programs, exhibits, artifacts, and films. Kids can explore the center and earn a badge with the Junior Ranger program. The center's bookstore has books, music, children's books, and craft items on sale. Admission to the center is free.

SATURDAYS: 2:45pm Music Session, 4:00pm Food Demonstration/Tasting
Open Tuesday-Friday 9:30 a.m.-4:30 p.m., Saturday 9:30 a.m.-6:00 p.m.
250 West Park Avenue, Eunice 337-457-8499



Supported by our
Catholic
Community

St. Anthony
St. Mathilda
St. Thomas More

christmas chuckles

1. What is a snowman's favorite lunch?
2. What do you get when you eat the Christmas decorations?
3. What do you get when you cross an archer with a gift wrapper?
4. Where does a snowman keep his money?

3. Ribbon Hood, 4. In a Snow Bank
1. An Iceberger, 2. Tinsel-ttus,

ANSWERS

FREY OUTFITTERS



EST. 2008

WWW.FREYOUTFITTERS.COM

1425 E. Laurel Avenue
Eunice, LA 70535

Western Clothing Boots Flame Resistant Gear
Hats Ladies' Wear Childrens' Wear Accessories

Sears

SEARS, ROEBUCK AND CO.
340 E. Laurel
Eunice, LA 70535

PHIL YOUNG
Owner



LVPARK.COM
337/457-2881

SB BASILE STATE BANK
FDIC 

MOBILE CHECK DEPOSIT

Now available from
Basile State Bank!

Available for Apple® and Android devices!

Visit our Website: www.basilebank.com



337/457-5211
HOTBOUDIN.WIX.COM/LACADIEINN



DISTRIBUTORS OF
PLUMBING • HEATING • AIR CONDITIONING • ELECTRICAL
REFRIGERATION • MUNICIPAL • UTILITY • EQUIPMENT • SUPPLIES

COBY CLAVIER
BRANCH MANAGER
770 N CC DUSON
EUNICE, Louisiana 70735
email: CCCLAVIER@COBURNS.COM
www.coburns.com

PH: 337-457-7334
FX: 337-457-1217
WATTS: 800-832-8428

Trosclair Photography & Video Service

PHOTOGRAPHY OF DISTINCTION
9:00AM-5PM Mon-Fri
Sat-By appointment only
1651 W. Laurel Ave. Eunice, LA
457-2500

Keep it Safe. Make it Happy.



**The folks at Cleco wish you
a safe & happy holiday.**



Our people. Your power.

HOLIDAY SAFETY TIPS
www.cleco.com