

LIBERTY CENTER

Eunice Community Concert Band & Choir, Inc.
presents

Rhythm

July 17 & 18, 2008
7:00P.M.

EUNICE, LOUISIANA

OUR 37th CONCERT

1990

EIGHTEENTH ANNIVERSARY

2008

PROGRAM

African Processional

edited by Ron Kean

Jambo rafiki yangu (Welcome, my friend)

Your Turn!

Oh, Won't You Sit Down?

arr. Greg Gilpin

Let's Call the Whole Thing Off

arr. Russell Robinson

If You're Happy and You Know It

Traditional

Italian Polka

Rachmaninoff, arr. Elena Roussanova Lucas

Blue Tango

Leroy Anderson

INTERMISSION

Columbian March

Karl King

Espana Cani

Marquina, arr. John Moss

I Heard It Through the Grapevine

arr. Mark Brymer

The Rhythm of Life

arr. John Leavitt

The Lord of the Dance

arr. Richard Saucedo

Jambo! Welcome!

The choir opens tonight's program with a Swahili song of welcome with the text, "Jambo rafiki yangu!" or

"Welcome my friend!" ...and,

"Kawaida ume fahamu, ni se fahamu!"

"Always remember me and I will remember you!"

MEMBERS *of the Band and Choir*

FLUTE

Sandi Bergeron Basile
Patricia Dossman Eunice
Joy Jodon Eunice *

CLARINET

Bobbi Comeaux Ville Platte
Megan LeDoux Iota
Erin Ortego Basile

SAXOPHONE

Joseph Reed Eunice *

TRUMPET

Glenn Durbin Eunice
Cindy Mouton Scott
Mandi Shumaker Rayne

TROMBONE

Connie C. Beaugh Eunice

BARITONE

Caroline Fruge' Rayne

TUBA

Jan Pullin Eunice
Joe Stemplewski Iota

PERCUSSION

Keith Jodon Eunice *
John Phelan Kaplan *

* Featured in African Processional



*For the rhythm of life
is a powerful beat
puts a tingle in
your fingers and
a tingle in your
feet, rhythm on
the inside, rhythm
on the street, and the
rhythm of life is a
powerful beat.*

Excerpt from *The Rhythm of Life*

SOPRANO

Patricia Dossman Eunice
Bobbie Doucet Eunice
Dianna Doucet Iota
Arien Harper Eunice
Shirley Jodon Eunice
Rachel LaFargue Eunice
Brenda LeJeune Eunice
Jesslyn Reed Basile
Kathy Richard Eunice
Katherine Stagg Rayne

ALTO

Debbi Ardoin Eunice
Becky Dischler Eunice
Lora Fontenot Eunice
Jenna Fruge Eunice
Martha Guempel Eunice
Linda LaFleur Eunice
Angie Revere Eunice
Gwen Stout Eunice
Sammie Tucker Eunice

TENOR

Troy Breaux Crowley
Jennifer Creswell Eunice
Richard Davis Eunice
Ed Deshautelle Eunice
Harold Fontenot Eunice
Stuart LaFleur Eunice
Suzanne LaHaye Eunice *

BASS

Caroline Fruge' Rayne
David Harper Eunice *

PIANO ACCOMPANIST

Connie C. Beaugh Eunice

GENERAL MANAGER / COFOUNDER

Patricia Dossman Eunice

MASTER OF CEREMONIES

Stephen Guempel Eunice

CONDUCTOR / COFOUNDER

Dwight R. Jodon Eunice

Darnall, Sikes, Gardes & Frederick

A Corporation of Certified
Public Accountants



Kiwanis Young Children Priority One



*Special Thanks to
First United
Methodist Church
for providing the
Community Choir
with rehearsal
facilities!*

FUMCeunice.org



Kermen D. Beauchamp, M.D.

DIPLOMATE, AMERICAN BOARD OF PEDIATRICS
CHILDREN AND ADOLESCENT MEDICINE

3521 Hwy 190, Suite R
Eunice, LA 70535

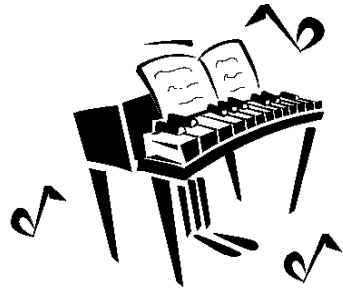
Office Hours: Monday-Friday
9AM - 12 Noon & 1PM - 5PM (337)457-2301



**Lydia Guidry,
General Manager**
818 Fortune Rd, Youngsville, 857-9910
1225 Church Point Hwy, Rayne, 334-7060
163 N. Bobcat Dr., Eunice, 550-7878
2930 S. Union, Opelousas, 594-9297

SMITH True Value® HARDWARE
300 E. Laurel Phone: (318) 457-3113
Eunice, Louisiana 70535

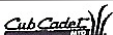
Harry A. Smith, Jr. & Claire Smith
Owners



Becky & Brian Tanner

OIL X-PRESS, INC.

10-MINUTE OIL CHANGE Mark & Rebecca Daigle
1530 West Laurel, Eunice Owners
Monday-Saturday 337-546-0014



24 Hr. Service
(337) 457-4196
Fax: (337) 457-4197

340 Moosa Blvd.
Eunice, La 70535

LSUE STUDENT NURSES' ASSOCIATION Choosing to Care

Donated by Jennifer Creswell

DEYO JODON

457-3910

1600 Yukon Street
Eunice, Louisiana 70535

dba **Jodon's Building Construction** since 1985

custom mantels • cabinets
painting • wallpaper • carpentry
fix-it-all • roof repair • odd jobs
drafting • building • remodeling

*Praise Him with timbrel
and dancing...let everything that
has breath Praise the Lord!*



www.afi.com

American Film Institute's

100 Years of Film Scores
Top 10 Movie Musicals of All Time

1. **Singin' in the Rain**
2. **West Side Story**
3. **The Wizard of Oz**
4. **The Sound of Music**
5. **Cabaret**
6. **Mary Poppins**
7. **A Star is Born**
8. **My Fair Lady**
9. **An American in Paris**
10. **Meet Me in St. Louis**

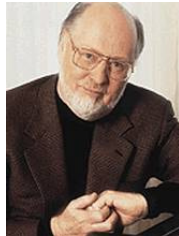


American Film Institute's

100 Years of Film Scores
Top 10 Film Scores of All Time

1. **Star Wars**, John Williams
2. **Gone With the Wind**, Max Steiner
3. **Lawrence of Arabia**, Maurice Jarre
4. **Psycho**, Bernard Herrmann
5. **The Godfather**, Nino Rota
6. **Jaws**, John Williams
7. **Laura**, David Raksin
8. **The Magnificent Seven**, Elmer Bernstein
9. **Chinatown**, Jerry Goldsmith
10. **High Noon**, Dimitri Tiomkin

John Williams had 3 in the top 25.
The other was **E.T.** at number 14.



John Towner Williams is arguably the most talented film score composer in history. Familiar movies include: **Jaws**, **Superman**, **Indiana Jones**, **Jurassic Park**, **Hook**, **Home Alone**, **JFK**, **Schindler's List**, **Harry Potter** and many others. In addition, he has composed music for four olympic games and the theme music for the NBC Nightly News. John Williams has won a total of five Academy Awards and four Golden Globe Awards. He has been nominated for 21 Golden Globes and 59 Grammys. With 45 Oscar nominations, Williams currently

holds the record for the most Oscar nominations for a living person. He is also the second most-nominated person in the history of the

Academy Awards (tied with late fellow film composer Alfred Newman) to Walt Disney's 59. Forty of Williams' Oscar nominations are for Best Original Music Score and 5 are for Best Original Song.

All five winners are in the former category.

Williams has also received two Emmy Awards and four nominations.



Got Veggies?

We like to include in the concert program interesting tidbits and facts...just for fun. Tonight, we have scattered information about vegetables; things you may have never stopped to think about; evidence of God's Plan of Creation is all around us...
even on your dinner plate!

A sliced **CARROT** looks like the human eye. The pupil, iris and radiating lines look just like the human eye and YES, science now shows that carrots greatly enhance blood flow to and function of the eyes.



We proudly support the ECCBC, celebrating 18 years of entertainment!



SERVICE Above Self



EUNICE ROTARY CLUB

Today's Young World, Inc.

457-3938

351 E. Laurel
Eunice, LA 70535



Kevin J. Brown
Branch Manager

St. Landry Homestead

FEDERAL SAVINGS BANK

101 North Sixth Street
P.O. Box 9, Eunice, LA 70535
457-8196

SUPPORT YOUR LOCAL ARTISTS

Become a patron ...

Purchase local original artwork
Invite FACE to exhibit at your function
Help fund exhibitions



call 457-3156 or 457-7095

HEBERT MEDICAL GROUP, APMC

3521 Hwy. 190, Ste. S - Eunice, LA 70535

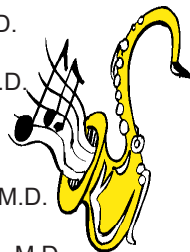
Heather D. Butler, M.D.

Charice M. Hebert, M.D.

Allen P. Butler, M.D.

Richard L. Hebert, II, M.D.

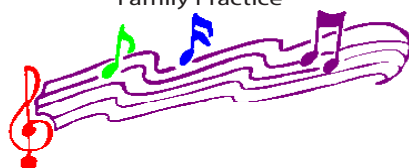
Donald W. Barnes, Jr., M.D.



Craig M. Matherne

M.D.

Family Practice



3521 Hwy 190 - Suite P, Eunice, LA
337/457-8040

Joining
THE
ECCBC

The organization welcomes anyone who wishes to participate. There are no dues or auditions. Our sole purpose is to enjoy music and share it with others. Joining is easy! Simply call 337.457.1776, write for information (P.O. Drawer 912, Eunice, LA 70535), or complete one of the membership forms in the lobby tonight. ☿

**DATES OF OUR
2008 CHRISTMAS
CONCERT:
December 11 & 12
Thursday & Friday**

ECCBC
EUNICE COMMUNITY CONCERT BAND & CHOIR

Angie's maple ave.
PHARMACY & *Gifts*
 Compound
Prescription
Specialist

August Courville, R.Ph. Ken Richard, R.Ph.

Charles
Guillard
agency, inc.

1241 e. laurel 457-5231



CROWLEY, LOUISIANA

Acadia Stor & Lok

Locally Owned & Operated
On Site Management
Climate Control Available
2 convenient locations

716 Crowley - Rayne Hwy
P.O. Box 365
Crowley, La 70527

.....
Phone: 337-783-3431
Cell: 337-581-1445

THE
**BOOK
NOOK**



Used and New Books • Gifts • Yoga & Bellydancing Classes
1910 W. Laurel Ave, Eunice 337-457-1888
bellsbooknook@bellsouth.net



Good Luck!

Phone: (337) 432-6663 Fax: (337) 432-6664
Caring is our way of life

Music washes
away from
the soul the
dust of
everyday life.

Berthold Auerbach



Jerry's Furniture Mart, Inc.

P.O. Box 286

EUNICE, LOUISIANA 70535

PHONE: 337-457-4272

Guillory Oil Company, Inc.



P.O. Box 706
Eunice, LA
457-3384

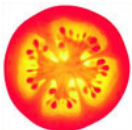
RICE PALACE

A stylized illustration of a pile of golden rice stalks. The stalks are arranged in a circular pattern, with some stalks standing upright and others lying flat. The background is white with red lightning-bolt-like patterns radiating from the base of the rice pile.

CROWLEY, LOUISIANA

Concert Titles

1990	July	<i>A Family Concert of Patriotism and Americana</i>
	Dec	<i>A Caroling Christmas</i>
1991	July	<i>A Grand Ole Summer</i>
	Dec	<i>Coming Home for Christmas</i>
1992	July	<i>Spirit of the South</i>
	Dec	<i>A Very Merry Christmas</i>
1993	July	<i>Rhapsody</i>
	Dec	<i>A Storybook Christmas</i>
1994	July	<i>Centennial</i>
	Dec	<i>The Most Wonderful Time of the Year</i>
1995	July	<i>For America</i>
	Dec	<i>A Kid's Christmas</i>
1996	July	<i>Regards to Broadway</i>
	Dec	<i>Season of Dreams</i>
1997	July	<i>Back in the Good Old Days</i>
	Dec	<i>It's Christmas</i>
1998	July	<i>Razzle Dazzle</i>
	Dec	<i>Candy Canes and Christmas</i>
1999	July	<i>Swing</i>
	Dec	<i>One Magic Christmas</i>
2000	July	<i>Celebrate 2000</i>
	Dec	<i>Gloria!</i>
2001	July	<i>Dare to Dream</i>
	Dec	<i>Sing We Now of Christmas</i>
2002	July	<i>America: My Home</i>
	Dec	<i>Christmas Joy</i>
2003	July	<i>That's Entertainment</i>
	Dec	<i>Jubilate</i>
2004	July	<i>Summer Serenade</i>
	Dec	<i>Sing Noel</i>
2005	July	<i>Encore!</i>
	Dec	<i>A Christmas Festival</i>
2006	July	<i>Viva Musica!</i>
	Dec	<i>The Spirit of Christmas</i>
2007	July	<i>Star-Spangled Summer</i>
	Dec	<i>Fireside Christmas</i>
2008	July	<i>Rhythm of Life</i>



A **TOMATO** has four chambers. All of the research shows tomatoes are indeed pure heart and blood food.

EUNICE PLAYERS' THEATRE

presents

Broadway on Second Street: A Musical Review

► Opens Sunday, July 20, 2pm

► Monday, July 21, Dinner Theatre, 6pm

► Tuesday-Thursday, July 22-25, 7pm

TICKETS: 337-457-3330

Vige & Tujague

Certified
Public
Accountants

151 N. 2nd Street
Eunice, LA
457-9324



Charles H. Bowie, M.D.

Practice Limited To Urology

337-457-8916

Office Hours 1221 E. Laurel Ave.
By Appointment P.O. Drawer 1660
Eunice, LA 70535-1660

Feel the
Rhythm!



McDonald's



PAST ACTIVITIES & PROGRAMS

Hosted by the ECCBC

United States Marine Corps Band *New Orleans, LA*

Ballet Magnificat *Jackson, MS*

Acadiana Symphony Orchestra *Lafayette, LA*

ULL Faculty Brass Quintet *Lafayette, LA*

Chinese Virtuosi *Shainghai, China*

ULL Wind Ensemble *Lafayette, LA*

ULL African Dance and Percussion Ensemble *Lafayette, LA*

National Symphony Orchestra *Washington, D.C.*

Centenary College Choir *Shreveport, LA*

ULL Chorale and Show Choir *Lafayette, LA*

LSU Chorus *Baton Rouge, LA*

Boogie Kings *Members from various Louisiana cities*

Southern University Gospel Choir *Baton Rouge, LA*

...and others!

Here's the Scoop
On the Trumpet

The trumpet is a musical instrument with the highest register in the brass family. Trumpets are among the oldest musical instruments, dating back to at least 1500 BC. They are constructed of brass tubing bent twice into an oblong shape, and are played by blowing air through closed lips, producing a "buzzing" sound which starts a standing wave vibration in the air column inside the trumpet. The most common type is the B-flat trumpet, but C, D, E-flat, E, F, G and A trumpets are also available.

Notable, famous jazz trumpet players include Louis Armstrong, Miles Davis, Dizzy Gillespie, Freddie Hubbard and Maynard Ferguson.



A WALNUT looks like a little brain, a left and right hemisphere, as well as upper cerebrums and lower cerebellums. Even the wrinkles or folds are on the nut like the

neo-cortex. We now know that walnuts help develop over 3 dozen neuron-transmitters for brain function.

Shetler-Corley

Motors

1623 North Parkerson Ave

Crowley, LA 70526

783-4600

Don Shetler

Chevrolet, Buick

19400 Crowley Eunice Hwy

Crowley, LA 70526

783-6537



ST. LANDRY BANK
AND TRUST COMPANY

OPELOUSAS•EUNICE•PORT BARRE
LAFAYETTE•SCOTT•CARENCRO

MEMBER FDIC



SAVOY MEDICAL CENTER

Savoy Family Care

Obstetrics & Gynecology

Charles A. Frazer, M.D., FACOG

102 S. 2nd Street, Eunice 337-457-3135

Celebrating 22 Years in Business

**YOUNG WORLD
CHILD CARE Inc.**

1060 LSUE Dr. Eunice, LA 70535-5961
(337) 457-9370



LOUISIANA
WATER
COMPANY

Harold Fontenot
Area Manager

251 E. Vine Ave.
Eunice, LA 70535

337-457-1772
FAX: 337-457-1778

Stagg's Nursery

Specializing in
plants grown
by Louisiana
growers



106 E. Harrop St., Rayne, LA 337-250-6672

Katherine Stagg, Owner
gs4life@bellsouth.net

Call Us First for all of your home health needs!



**Eunice Community
Home Health**

A Branch of Acadian HomeCare

3521 Hwy 190 | Eunice, LA | 337.550.0002

www.LHCGroup.com

Louisiana Academy of
Beauty thanks the
ECCBC for your
contribution to the
arts in Acadiana.

Bravo!



John F. "Butch" Cobb

Owner

337-457-7627 550 E. Laurel Ave., Eunice



*painter paints
pictures on canvas.
But musicians paint
their pictures on silence.*

Leopold Stokowski

slick CONSTRUCTION
CO., INC.

TELEPHONE (537) 457-4803

EUNICE, LOUISIANA 70535

POST OFFICE BOX 962

 **J BROUSSARD**
Benefits Group

Employee Benefits • Insurance • Guidance
315 S. Callege Road, Ste 202 – Lafayette, LA 70503

Jude Broussard, Managing Agent - 1-800-378-7716

*We proudly acknowledge the Eunice Community Concert Band & Choir
and the efforts of New York Life agents
Patricia Dossman and **Dwight Jodon**
for the continuous contributions they make to their community.*

J Broussard Benefits Group specializes in

**Group Health, Dental, Disability and Life Insurance
2 to 250 employees**

**Call us directly or have Patricia Dossman or Dwight Jodon
contact us on your behalf.**

THE
Organization
Established in 1990

The Eunice Community Concert Band & Choir, Inc. was organized in February of 1990 with the intent to promote vocal and instrumental music in Eunice and the surrounding area. The organization is open to anyone who enjoys and appreciates vocal and instrumental music. There are no auditions or dues. We depend solely on the contributions of merchants and individuals and provide two concerts each year, July and December. The organization is operated by volunteers and pays no salaries.

In the last eighteen years the band and choir has produced thirty-six concerts. Also during our first eighteen years, we have provided music for: Eunice July Fourth celebrations, LSUE commencement exercises, city inaugurations, Eunice Centennial Celebration (performing an original work by Dr. Quincy Hilliard, ASCAP, commissioned by the ECCBC for the celebration, LSUE community fun days, Eunice Christmas celebrations, and presented concerts in Crowley, Oakdale, Ville Platte and Lafayette. Several members of the community choir participated in a concert at Carnegie Hall in New York City in 1994. Joining singers from across the country, the group was

directed by Dr. James Haygood and world-renowned choral conductor John Rutter.

The ECCBC has enjoyed much success since 1990. Membership in the organization has grown to over 150. For any given concert there may be as few as forty or as many as eighty of those members performing on stage. For many, the rehearsal season provides a wholesome social activity and an opportunity to meet new friends.

The organization adds to the uniqueness of this city. *Very few* American cities the size of Eunice have a musical organization such as the ECCBC. We are proud of all that we have done and look forward to serving the Eunice area with quality, family programs for many years to come. ☞

TO CONTACT US:

ECCBC / P.O. Drawer 912

Eunice, Louisiana 70535

PH: 337.457.1776

Fax: 337.457.9543

Email: eccbc@eccbc.org

ECCBC.org

Iota Mercantile and Museum

Gifts and Wine

125 Duson Avenue PO Box 364

Iota, Louisiana 70543

337/779/2034

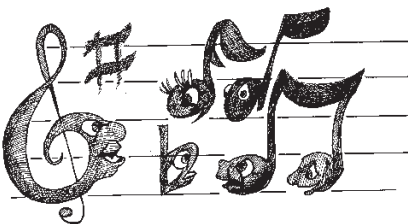


KENDALL FONTENOT

Agent

1110 W. Laurel
Eunice, LA 70535

Phone:
337-546-6501





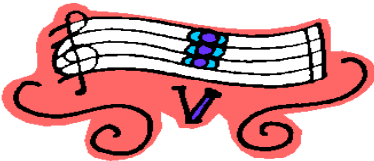
OUR LOGO

In 1992, the ECCBC commissioned the University of Louisiana at Lafayette art department to create a logo for the organization. After a meeting with Dwight Jodon, Pat Dossman and the department, approximately fifteen art students set about the task of designing an appropriate ensignia.

Several of the proposed designs centered around the organization's acronym, ECCBC. However, the winning design was a simple graphic. It symbolizes the semicircle staging used by musical ensembles globally. The image is one *in motion* as the conductor's baton sweeps across the design. This particular logo was selected because of its simplicity and because the ECCBC is determined to move forward into the future with the mission of sharing the gift of music with the residents of Acadiana.

We will begin using the logo more frequently to identify the organization. We are proud to celebrate our sixteenth birthday this year, and are excited about our future. It is our desire that this logo become...*a mark of excellence!*

WELCOME, GIRL SCOUTS!



ECCBC SOPRANO SECTION

*Katherine, Kathy, Jesslyn,
Bobbie, Dianna, Pat, Arien,
Shirley, Rachel, & Brenda*

H. BROWN, INC.
CRANES & HOISTING
P. O. Box 487
LAFAYETTE, LA
70505

Hydraulic Cranes
Flatbed Trucks
Scissor Systems
Cranes for 300 tons

Specialized
Hoisting
Jacking Systems

1-800-256-2348 Ph. 337-457-8131 Fax 337-546-6354



ONIONS look like body cells. Today's research shows that onions help clear waste materials from all of the body cells. They even produce tears which wash the epithelial layers of the eyes.

KIDNEY BEANS actually heal and help maintain kidney function and yes, they look exactly like the human kidneys.



CROWLEY ROTARY CLUB

ACADIAN MEDICAL CENTER

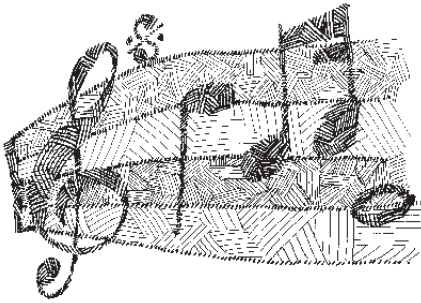
3501 Hwy 190
EUNICE, LOUISIANA
70535

RHONDA FINK MOSER, O.D.



301 SOUTH SECOND STREET
P.O. BOX 511
EUNICE, LA 70535
PH: 337-457-2376

American Optometric
Association



From the L&L Family

We celebrate the memory of a
very special friend and loved one...
Betty Thibodeaux ~ *with all our love!*

L & L Sandblasting Inc

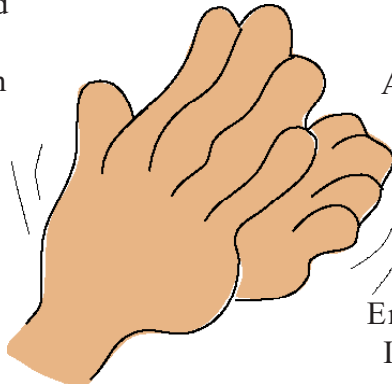
1498 Hwy 190 Eunice

Children's Choir

*Special thanks to First Baptist Church for
providing rehearsal facilities.*

Arien & David Harper
Directors
Connie Beaugh, Accompanist
Gwen Stout, Assistant

Brooke Aguillard
Olivia Aguillard
Hunter Ashford
Nancy Bergeron
Beth Freeman
Allie Frey
Millie Frey
Alyssa Fruge
Logan Fruge
Maecy Fruge
Victoria Fruge



Skylar Hoffpauir
Isaac Ingram
Kelsey LeJeune
Alexander Manuel
Ashley Moffett
Hillary Olivier
Curt Pullin
Randi Stelly
Aleesha Vallare
Emma Zaunbrecher
Isaac Zaunbrecher

REHAB X CEL Physical Therapy & Sports Medicine

Locally owned and operated by Driggs, Driggs & Miller
441 Moosa Blvd (337) 457-8164

Thank You

We kindly thank the following for their assistance with tonight's production:

Arien Harper
David Harper
Gwen Stout
FACE
Katie Stanford
Tammy Stanford

Lisa Ortego
Troy Breaux
Berna Mire
Deyo Jodon
Jan Pullin
Linda LaFleur
Rachel LaFargue
Suzanne LaHaye
Debbi Ardoin

Richard Davis
First United
Methodist Church
First Baptist Church
Ginny Moody
Joan McManus
Jean Lafitte
National Park
All of Our Advertisers



Patricia G. Dossman, LUTCF

Dwight R. Jodon, LUTCF

Agents

New York Life Insurance Company

457-1776



2307 N. Parkerson
Crowley, Louisiana

Phone (337) 785-0339

Fax (337) 785-0338

THE
Liberty Center

Construction of this vaudeville silent movie house began in 1920. Financial failure halted construction on the *Electric Theater* with the outside walls only partially completed. Purchased by Claude Keller and A.F. McGee Sr., the theater was completed and opened July 19, 1924 as the New Liberty Theatre.

This *Premier Temple of Amusement*, is listed on the National Register of Historic Places by the United States Department of the Interior and has been included in the National Trust Guide of Great American Movie Theaters Preservation Press Guide published by the Smithsonian.



TRI-PARISH BANK
P.O. BOX 1029 • EUNICE, LA 70535 PH. (337) 457-7341
MEMBER F.D.I.C.

EUNICE MEDICAL LABORATORY
INDEPENDENT CLINICAL LABORATORY

301 North M.L.K. Drive, Ste. B
Eunice, LA 70535 (457-5562)
(one block from the old hospital)

Come and see us for all your blood work and Lab. needs.

David Darbonne, M.T., ASCP L. Bob Courville, M.T., C.L.S.



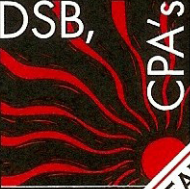
**Reverend
Truman Stagg,
Pastor**

FIRST UNITED
METHODIST
CHURCH, *Eunice*




**Hancock
Bank**

2250 West Laurel Ave
Eunice, LA
457-3776
hancockbank.com

DSB,

CPA's
DUGAS, SOILEAU & BREAUX, L.L.C.
 CERTIFIED PUBLIC ACCOUNTANTS

122 East 5th Street
 Post Office Drawer 307
 Crowley, Louisiana 70527-0307
 phone (337) 783-0650 • fax (337) 783-7238



LA'S #1
Tobacco & Liquor Discount Outlet
 **TOBACCO PLUS**
 DISCOUNT OUTLET

Dr. & Mrs.
 Reginald
 Segar



from the
ECCBC ALTO SECTION

David Ltd.
HAIR & NAIL SALON

546-0163

DAVID W. MANUEL
 Owner

204 S. Second
 Eunice, LA 70535

Don & Debb
 Leonards



Sacred Heart
CHRISTIAN BOOKS & GIFTS

MYRTIS & DAVID DARBONNE
 OWNERS

337/457-1366

1701 W. Laurel Ave., Suite B



DANNY DESHOTEL
 Owner
 4503 Johnston St.
 Lafayette, LA 70503
 (337) 984-0480
 (337) 984-9997

TRUCK ACCESSORIES

GUARANTY BANK

MEMBER FDIC
457-7334

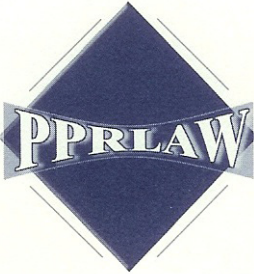
Serving Eunice, Ville Platte, Vidrine & Mamou

The Flower House
Fresh & Silk Floral Arrangements-Plants
Gift Baskets-Balloon Bouquets-Unique Gift Items



Ethel Meche
(337) 546-0257

450 N. 2nd Street
Eunice, La. 70535



PUCHEU, PUCHEU & ROBINSON, LLP
Attorneys At Law

Sears

SEARS, ROEBUCK AND CO.
340 E. Laurel
Eunice, LA 70535

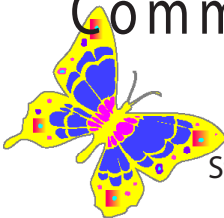
PHIL YOUNG
Owner

PICOU'S

PHONE 457-2218

DRUG STORE
260 N. 2nd. St.
EUNICE, LA 70535

Supported by our
**Catholic
Community**



St. Anthony
St. Mathilda
St. Thomas More

BETWEEN FRIENDS GIFTS

Jim and Sheri Spell
2437 Beach Highway
Crowley, LA 70526

Ph. 337-783-1521

Cell Ph. 337-316-3974 337-316-2984

Antiques, Murals, Shabby Chic, Vintage China
GIFTS FOR EVERY SEASON AND OCCASION



Graul Eye Center

Edward Graul
MD Ophthalmologist
251 Moosa Blvd.
457-1638



Trosclair Photography & Video Service

PHOTOGRAPHY OF DISTINCTION

9:00AM-5PM Mon-Fri

Sat-By appointment only

1651 W. Laurel Ave. Eunice, LA
457-2500

Glenn Durbin
Income Tax Preparation
28 Years Experience

*Specializing in individual & small
business tax returns*

BY APPOINTMENT ONLY: CALL (337) 546-6476

OXYGEN * ACETYLENE * INDUSTRIAL GAS
WELDING MACHINE REPAIRS * TORCH & REGULATOR REPAIRS

ALEXANDRIA
318-443-6386

LAFAYETTE
337-837-5701



JENNING5
337-816-1821

EUNICE
337-457-9348



CELERY, BOK CHOY, RHUBARB and more look just like bones. These foods specifically target bone strength. Bones are 23% sodium and these foods are 23% sodium. If you don't have enough sodium in your diet the body pulls it from the bones making them weak. These foods relish the skeletal needs of the body.

CENTURY 21

DCG / Aguilard Realty

101 N. 7th Street, P.O. Box 1258
Eunice, Louisiana 70535
Office (337) 457-9385
Raymond Aguilard, Broker



**We were there when Steven's dad
made his first donuts in Funnice**



Steven, Cynthia Ray's Bakery

**We'll be here as long
as folks love Ray's
cookies and cakes**

CLECO
ALL DAY, EVERY DAY

1.800.622.8537 • www.cleco.com