

# LIBERTY CENTER

**Eunice Community Concert Band & Choir, Inc.**

*presents*



**July 14 & 15, 2011**  
**7:00P.M.**

**EUNICE, LOUISIANA**

**OUR 43<sup>rd</sup> CONCERT**

**1990**

**TWENTIETH ANNIVERSARY**

**2011**

# PROGRAM

- Forty-Second Street arr. Larry Shackley
- Singin' in the Rain arr. Mark Hayes
- Bill Bailey Won't You Please Come Home? arr. Greg Gilpin
- The Lion Sleeps Tonight arr. Alan Billingsley
- America from West Side Story arr. Michael Brown
- British Eighth March arr. Harold Gore
- Seventy-Six Trombones arr. Jay Bocook

## INTERMISSION

- El Choclo arr. Robert Longfield
- That Old Hound Dog Rag Randall Standridge
- Canon of Praise arr. Hal Hopson
- Fly Away Medley arr. Mark Hayes  
I'll Fly Away • We'll Understand It Better By and By  
When the Roll Is Called Up Yonder • On Jordan's Stormy Banks  
When the Saints Go Marchin' In
- Forevermore arr. Phillip Keveren
- Amazing Grace arr. Paul Murtha



# MEMBERS

## *of the Band and Choir*

### FLUTE

Patricia Dossman Eunice \*  
Joy Jodon Eunice

### CLARINET

Ruby Clancy Eunice  
Megan LeDoux Iota  
Art Riedel Lafayette

### BASS CLARINET

Victoria Guidry Maurice

### SAXOPHONE

Bryson Belaïre Basile  
Jacob Prince Loreauville  
Joseph Reed Eunice  
Trey Verret Loreauville

### TRUMPET

Glenn Durbin Eunice \*  
Jerry Fruge' Loreauville  
Jordan Melancon Loreauville  
Cindy Mouton Scott

### FRENCH HORN

Charles Guidry Maurice

### TROMBONE

Jimi Bergeron Basile  
Mike Boudreaux Lafayette  
Tiffany Hebert Kaplan  
Dwight Manuel Eunice

### BARITONE

Terry Arton Jeanerette

### TUBA

Justin Broussard Scott  
David Douget Iota

### STRING BASS

Claudia Wood Eunice

### KEYBOARD

Connie C. Beaugh Eunice \*

### PERCUSSION

Keith Jodon Eunice \*  
John Phelan Kaplan

### SOPRANO

\* Patricia Dossman Eunice  
Bobbie Doucet Eunice  
Sue Fontenot Eunice  
Marian Fruge' Loreauville  
Martha Gallow Eunice  
Brenda Granger Eunice  
Arien Harper Eunice  
\* Shirley Jodon Eunice  
Rachel LaFargue Eunice  
Sarah Pulling Eunice  
Kathy Richard Eunice  
Erin Van Horn Eunice  
Delsia Young Eunice

### ALTO

Jennifer Fowler Eunice  
Jenna Fruge' Eunice  
Nancy DeVillier Eunice  
Martha Guempel Eunice  
Becky Hulsey Eunice  
Linda LaFleur Eunice

### TENOR

Troy Breaux Crowley  
Richard Davis Eunice  
Ed Deshautelle Eunice  
Stuart LaFleur Eunice  
Suzanne LaHaye Eunice  
John Miller Eunice

### BASS

Jerry Fruge' Loreauville

### PIANO ACCOMPANIST

\* Connie C. Beaugh Eunice

### MASTER OF CEREMONIES

Stephen Guempel Eunice

### GENERAL MANAGER / COFOUNDER

\* Patricia Dossman Eunice

### CONDUCTOR / COFOUNDER

\* Dwight R. Jodon Eunice

RHONDA FINK MOSER, O.D.  
SARAH MOSER FRUGE', O.D.

301 S. SECOND STREET  
P.O. BOX 511  
EUNICE, LA 70535  
PH: 337-457-2376



Kiwanis  
Young Children  
Priority One



*Special Thanks to  
First United  
Methodist Church  
for providing the  
Community Choir  
with rehearsal  
facilities!*

**FUMCeunice.org**

## Window Tinting

**Guillory Professional Window Tinting**

Radio, Amplifier & Alarm Installation • Running Boards  
Ground Effects • Wheels • Head Liners • Sun Roofs • Fender Trim  
Vent Shades • Bug Shields • Head & Tail Light Covers

3627 Highway 190 Eunice, LA 70535

**337-457-0416**

BRIAN GUILLORY, OWNER

**EUNICE MEDICAL  
LABORATORY, INC.**

**DAVID DARBONNE, MT (ASCP)**

450 Moosa Blvd., Ste. C  
Eunice, Louisiana 70535



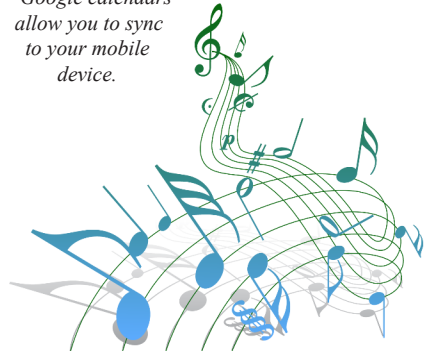
Open 7am-5pm Monday-Friday  
Insurance, Medicare &  
Medicaid Accepted  
337-457-5562

## COMMUNITY CALENDAR

ON THE ECCBC WEBSITE

We are maintaining a calendar of local events through a Google calendar on our website. If you have church, school, civic or other functions that you would like listed, simply email us at [eccbc1990@aol.com](mailto:eccbc1990@aol.com).

*Google calendars  
allow you to sync  
to your mobile  
device.*



**Don &  
Debbie  
Leonards**



*David Ltd.*  
**HAIR & NAIL SALON**

546-0163

DAVID W. MANUEL  
Owner

204 S. Second  
Eunice, LA 70535

**DSB,**  
**CPA's**  
**DUGAS, SOILEAU & BREAUX, L.L.C.**  
 CERTIFIED PUBLIC ACCOUNTANTS



122 East 5th Street  
 Post Office Drawer 307  
 Crowley, Louisiana 70527-0307  
 phone (337) 783-0650 fax (337) 783-7238

## Kermen D. Beauchamp, M.D.



DIPLOMATE, AMERICAN BOARD OF  
 PEDIATRICS CHILDREN AND  
 ADOLESCENT MEDICINE

3521 Hwy 190, Suite R  
 Eunice, LA 70535

Office Hours: Monday-Friday  
 9AM - 12 Noon & 1PM - 5PM (337) 457-2301



## DEYO JODON 457-3910

1600 Yukon Street  
 Eunice, Louisiana 70535

dba **Jodon's Building Construction** since 1985

- custom mantels • cabinets
- painting • wallpaper • carpentry
- fix-it-all • roof repair • odd jobs
- drafting • building • remodeling

### CITY OF EUNICE

*A Musical Place to Live*

**Mayor Claud "Rusty" Moody**

**I. Jackson Burson, Councilman at Large**

COUNCIL MEMBERS

Roland Miller

Germaine Simpson

Scott Fontenot

James "Jr." Bergeron

Judge Lynette Feucht

Terry Darbonne

Police Chief Ronald Dies

*City Marshal*

**A Molto Animato**  
**Thank You for coming!**



**ECCBC TENOR SECTION**

Troy, Richard, Ed, Stuart, Suzanne & John

We proudly support the  
ECCBC, celebrating  
21 years of entertainment!

**EUNICE ROTARY CLUB**



**The Flower House**

Fresh & Silk Floral Arrangements-Plants  
Gift Baskets-Balloon Bouquets-Unique Gift Items



Ethel Meche  
(337) 546-0257

450 N. 2nd Street  
Eunice, La. 70535

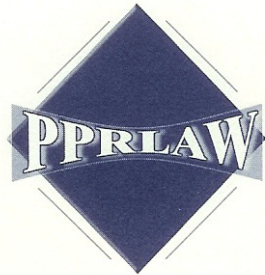
**SUPPORT  
YOUR LOCAL  
ARTISTS**

*Become a patron ...*

Purchase local original artwork  
Invite FACE to exhibit at your function  
Help fund exhibitions



call 457-3156 or 457-7095



**PUCHEU, PUCHEU & ROBINSON, LLP**  
Attorneys At Law

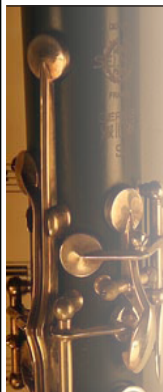
**HEBERT MEDICAL GROUP, APMC**  
3521 Hwy. 190, Ste. S - Eunice, LA 70535

Charice M. Hebert, M.D.  
Richard L. Hebert, II, M.D.



337-457-7138

Burgers • Seafood • PoBoys  
Ice Cream • Breakfast



**Craig M.  
Matherne**

M.D.  
Family Practice

3521 Hwy 190  
Suite P  
Eunice, LA  
337-457-8040



# Joining THE ECCBC

The organization welcomes anyone who wishes to participate. There are no dues or auditions. Our sole purpose is to enjoy music and share it with others. Joining is easy! Simply call 337.457.1776, write for information (P.O. Drawer 912, Eunice, LA 70535), or complete one of the membership forms in the lobby tonight. ☿

## DATES OF OUR 2011 CHRISTMAS CONCERT:

**December 8 & 9  
Thursday & Friday**

**ECCBC**  
EUNICE COMMUNITY CONCERT BAND & CHOIR



**T-Boy's Slaughter House,**  
Meat Market & Grocery  
Fresh & Smoked Meats  
Custom Slaughtering  
Groceries

(1Mile East of Mamou on Hwy 104)

Ph: (337) 468-3333

Fax: (337) 468-5050

**T-Boy's Boudin & Cracklins**

Hot Boudin  
Fresh Cracklins  
Specialty Meats

**Eunice, LA**

Ph: (337) 457-3344

Fax: (337) 457-3343

*Augie's* maple ave. PHARMACY & *Gifts*



Compound  
Prescription  
Specialist

August Courville, R.Ph.



CROWLEY, LOUISIANA

# Acadia Stor & Lok

Locally Owned & Operated  
On Site Management  
Climate Control Available  
2 convenient locations

716 Crowley - Rayne Hwy  
P.O. Box 365  
Crowley, La 70527



Phone: 337-783-3431  
Cell: 337-581-1445



**ZEB STEARNS, M.D.**

Family Practice  
Hours: M - F / 8:00 - 5:00

450 Moosa Blvd., Ste. A  
Eunice, LA 70535

Phone: (337) 546-6646  
Fax: (337) 546-0111



**Smith Family Chiropractic &  
Wellness, LLC**

**Jason M. Smith, D.C.**

200 N. 2nd Street, Eunice  
457-1376

[www.smithfamilychiropractic.net](http://www.smithfamilychiropractic.net)



# QUALITY EQUIPMENT COMPANY

Crowley ♦ Abbeville  
Welsh ♦ Lafayette

## *Jerry's* Furniture Mart, Inc.

P.O. Box 286 EUNICE, LOUISIANA 70535  
PHONE: 337-457-4272

*Music is the  
poetry of the air.*

JEAN PAUL FRIEDRICH RICHTER



## Guillory Oil Company, Inc.



P.O. Box 706  
Eunice, LA  
457-3384

# RICE PALACE

An illustration of several golden rice stalks and grains, positioned below the 'RICE PALACE' text.

CROWLEY, LOUISIANA



## Concert Titles

1990	July	<i>A Family Concert of Patriotism and Americana</i>
	Dec	<i>A Caroling Christmas</i>
1991	July	<i>A Grand Ole Summer</i>
	Dec	<i>Coming Home for Christmas</i>
1992	July	<i>Spirit of the South</i>
	Dec	<i>A Very Merry Christmas</i>
1993	July	<i>Rhapsody</i>
	Dec	<i>A Storybook Christmas</i>
1994	July	<i>Centennial</i>
	Dec	<i>The Most Wonderful Time of the Year</i>
1995	July	<i>For America</i>
	Dec	<i>A Kid's Christmas</i>
1996	July	<i>Regards to Broadway</i>
	Dec	<i>Season of Dreams</i>
1997	July	<i>Back in the Good Old Days</i>
	Dec	<i>It's Christmas</i>
1998	July	<i>Razzle Dazzle</i>
	Dec	<i>Candy Canes and Christmas</i>
1999	July	<i>Swing</i>
	Dec	<i>One Magic Christmas</i>
2000	July	<i>Celebrate 2000</i>
	Dec	<i>Gloria!</i>
2001	July	<i>Dare to Dream</i>
	Dec	<i>Sing We Now of Christmas</i>
2002	July	<i>America: My Home</i>
	Dec	<i>Christmas Joy</i>
2003	July	<i>That's Entertainment</i>
	Dec	<i>Jubilate</i>
2004	July	<i>Summer Serenade</i>
	Dec	<i>Sing Noel</i>
2005	July	<i>Encore!</i>
	Dec	<i>A Christmas Festival</i>
2006	July	<i>Viva Musica!</i>
	Dec	<i>The Spirit of Christmas</i>
2007	July	<i>Star-Spangled Summer</i>
	Dec	<i>Fireside Christmas</i>
2008	July	<i>Rhythm of Life</i>
	Dec	<i>Celebrate Christmas</i>
2009	July	<i>Sounds Like Summer</i>
	Dec	<i>Laughing All the Way</i>
2010	July	<i>Thanks for the Memories</i>
	Dec	<i>Bells of Joy</i>
2011	July	<i>It's Showtime!</i>

## EUNICE PLAYERS' THEATRE



Directed by: Angie B. McBride

**July 27 & 29, 2011 at 7 pm**  
**Sunday Matinee - July 31 & August 7, 2011 at 2 pm**  
**Dinner Theatre - August 2, 2011 at 6 pm**  
**August 4 & 6, 2011 at 7 pm**

TICKET INFO  
 337-545-0162  
 337-897-2156



General Admission \$10.00  
 Kids 5 & under \$5.00  
 Visa/Mastercard Accepted

[www.euniceplayers.blogspot.com](http://www.euniceplayers.blogspot.com)

## Vige, Tujague & Noel



**Certified  
 Public  
 Accountants**

**151 N. 2nd Street,  
 Eunice, LA  
 457-9324**

Celebrating 26 Years in Business

## YOUNG WORLD CHILD CARE Inc.

1060 LSUE Dr. Eunice, LA 70535-5961  
**(337) 457-9370**



---

# PERFORMING ARTS OPPORTUNITIES

- ♦ Eunice Players' Theatre, **Schoolhouse Rock Live!**, July 27, 29, Aug 2, 4 & 6, 2011, Eunice
- ♦ Grand Opera House, **The Sound of Music (including scenes from Annie & Mary Poppins)**, July 27-31, 2011, Crowley
- ♦ Grand Opera House, **Sammy Kershaw**, September 17, 2011, Crowley
- ♦ PASA Presents, **Midtown Men**, September 29, 2011, Heymann Center, Lafayette
- ♦ Grand Opera House, **Satisfaction: A Rolling Stones Tribute**, September 30, 2011, 7:00pm, Crowley
- ♦ PASA Presents, **Complexions Contemporary Ballet**, October 13, 2011, 7:30pm, Heymann Center, Lafayette
- ♦ Grand Opera House, **Golden Dragon Acrobats from China**, October 13, 2011, 7:00pm, Crowley
- ♦ Lutcher Theater, **Shrek the Musical**, November 6, 2011, 1:30pm & 6:30pm, Orange, TX
- ♦ PASA Presents, **Aquila Theatre Company - Macbeth**, November 10, 2011, 7:30pm, Heymann Center, Lafayette
- ♦ Grand Opera House, **Irma Thomas: The Soul Queen of New Orleans Returns**, November 18, 2011, 7:00pm, Crowley
- ♦ Lutcher Theater, **South Pacific**, November 20, 2011, 1:30pm & 6:30pm, Orange, TX
- ♦ Lutcher Theater, **In the Heights**, December 2, 2011, 7:30pm, Orange, TX
- ♦ Grand Opera House, **The Harlem Gospel Live Revue Christmas Concert**, December 6, 2011, 7:00pm, Crowley
- ♦ PASA Presents, **Mark O'Connor, Jane Monheit**, December 13, 2011, 7:30pm, Heymann Center, Lafayette
- ♦ Lutcher Theater, **The Christmas Music of Manheim Steamroller**, December 29, 2011, 7:30pm, Orange, TX
- ♦ Lutcher Theater, **Fiddler on the Roof**, January 12 & 13, 2012, 7:30pm, Orange, TX
- ♦ Grand Opera House, **Ballet Memphis**, January 18, 2012, 7:00pm, Crowley
- ♦ PASA Presents, **Elizabeth Futral**, January 20, 2012, 7:30pm, Heymann Center, Lafayette
- ♦ PASA Presents, **Ballet Memphis**, February 2, 2012, 7:30pm, Heymann Center, Lafayette
- ♦ Grand Opera House, **ImagineOcean**, February 15, 2012, 7:00pm, Crowley
- ♦ PASA Presents, **A Far Cry**, March 8, 2012, 7:30pm, Heymann Center, Lafayette
- ♦ Grand Opera House, **Jason Petty: Hank & My Honky Tonk Heroes**, March 9, 2012, 7:00pm, Crowley
- ♦ Grand Opera House, **Centenary College Choir**, March 23, 2012, 7:00pm, Crowley
- ♦ PASA Presents, **Nrityagram Dance Ensemble**, April 3, 2012, 7:30pm, Heymann Center, Lafayette
- ♦ Grand Opera House, **The Lowe Family**, April 18, 2012, 7:00pm, Crowley
- ♦ Grand Opera House, **Jamie Adkins presents Circus Incognitus**, May 22, 2012, 3:00pm, Crowley

ST. LANDRY PARISH TOURIST COMMISSION [www.cajuntravel.com](http://www.cajuntravel.com)

EUNICE PLAYERS' THEATRE [euniceplayers.blogspot.com](http://euniceplayers.blogspot.com)

THE ACADIAN [www.theacadian.com](http://www.theacadian.com)

GRAND OPERA HOUSE [www.thegrandoperahouse.org](http://www.thegrandoperahouse.org)

HEYMANN CENTER [www.heyman-center.com](http://www.heyman-center.com)

ACADIANA SYMPHONY ORCHESTRA [www.acadianasympphony.org](http://www.acadianasympphony.org)

PASA [pasa-online.org](http://pasa-online.org)

LUTCHER THEATER [lutcher.org](http://lutcher.org)

---

**ST. LANDRY BANK**  
AND TRUST COMPANY

OPELOUSAS•EUNICE•PORT BARRE  
LAFAYETTE•SCOTT•CARENCRO

MEMBER FDIC

**JBROUSSARD**  
Benefits Group  
Employee Benefits • Insurance • Guidance  
2020 W. Pinhook Road, Suite 301 – Lafayette, LA 70508

Jude Broussard, Managing Agent – 1-800-378-7716  
www.JBroussard.com

SUPPORTING THE ARTS!



LOUISIANA  
WATER  
COMPANY

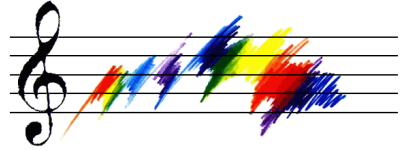
**LAWCO**

Harold Fontenot  
Area Manager

251 E. Vine Ave.  
Eunice, LA 70535

337-457-1772  
FAX: 337-457-1778

**DR. & MRS.  
REGINALD SEGAR**



Glenn Durbin  
Income Tax Preparation  
31 Years Experience

*Specializing in individual & small  
business tax returns*

BY APPOINTMENT ONLY: CALL (337) 546-6476

PAST ACTIVITIES & PROGRAMS

*Hosted by the ECCBC*

**United States Marine Corps Band**  
*New Orleans, LA*  
**Ballet Magnificat** *Jackson, MS*  
**Acadiana Symphony Orchestra** *Lafayette, LA*  
**ULL Faculty Brass Quintet** *Lafayette, LA*  
**Chinese Virtuosi** *Shainghai, China*  
**ULL Wind Ensemble** *Lafayette, LA*  
**ULL African Dance and Percussion**  
**Ensemble** *Lafayette, LA*  
**National Symphony Orchestra**  
*Washington, D.C.*  
**Centenary College Choir** *Shreveport, LA*  
**ULL Chorale and Show Choir** *Lafayette, LA*  
**LSU Chorus** *Baton Rouge, LA*  
**Boogie Kings** *Members from various  
Louisiana cities*  
**Southern University Gospel Choir**  
*Baton Rouge, LA*  
*...and others!*



We gratefully thank Michelle Reed  
for the art on stage tonight! Michelle  
holds a Masters in Fine Art Painting.

# **slick** CONSTRUCTION CO., INC.

TELEPHONE (337) 457-4803

EUNICE, LOUISIANA 70535

POST OFFICE BOX 962



Like everything else in nature, music is a becoming, and it becomes its full self, when its sounds and laws are used by intelligent man for the production of harmony, and so made the vehicle of emotion and thought.

THEODORE MUNGERS

# LSU

LOUISIANA STATE UNIVERSITY EUNICE

# EUNICE

Small Classes, Great Professors

**SUCCESS STARTS HERE.**

*Sacred Heart*  
**CHRISTIAN BOOKS & GIFTS**  
MYRTIS & DAVID DARBONNE  
OWNERS  
Phone 1701 West Laurel Ave.  
337-457-1366 Suite G  
Eunice, LA 70535

*Sweet Creations*  
Classes Available  
Cake Decorating Supplies  
Candy Making Supplies  
337-457-1366

*Tres Chic*  
BEAUTY SUPPLY  
337-457-0705

## COBB'S BEAUTY

### SALON

530 N. 4th St.  
Eunice  
457-4489



John F. "Butch" Cobb  
Owner  
337-457-7627 550 E. Laurel Ave., Eunice

Thanking the ECCBC for your contribution to the arts in Acadiana!

THE  
*Organization*  
Established in 1990

The Eunice Community Concert Band & Choir, Inc. was organized in February of 1990 with the intent to promote vocal and instrumental music in Eunice and the surrounding area. The organization is open to anyone who enjoys and appreciates vocal and instrumental music. There are no auditions or dues. We depend solely on the contributions of merchants and individuals and provide two concerts each year, July and December. The organization is operated by volunteers and pays no salaries.

In the last twenty-one years the band and choir has produced forty-two concerts. Also during these twenty-one years, we have provided music for: Eunice July Fourth celebrations, LSUE commencement exercises, city inaugurations, Eunice Centennial Celebration (performing an original work by Dr. Quincy Hilliard, ASCAP, commissioned by the ECCBC for the celebration), LSUE community fun days, Eunice Christmas celebrations, and presented concerts in Crowley, Oakdale, Ville Platte, Lafayette and New Iberia. Several members of the community choir participated in a concert at Carnegie Hall in New York City in 1994. Joining sing-

ers from across the country, the group was directed by Dr. James Haygood and world-renowned choral conductor John Rutter.

The ECCBC has enjoyed much success since 1990. Membership in the organization has grown to over 150. For any given concert there may be as few as forty or as many as eighty of those members performing on stage. For many, the rehearsal season provides a wholesome social activity and an opportunity to meet new friends.

The organization adds to the uniqueness of this city. *Very few* American cities the size of Eunice have a musical organization such as the ECCBC. We are proud of all that we have done and look forward to serving the Eunice area with quality, family programs for many years to come. ☚

**TO CONTACT US:**

**ECCBC / P.O. Drawer 912**

**Eunice, Louisiana 70535**

**PH: 337.457.1776**

**Fax: 337.457.9543**

**Email: [eccbc@eccbc.org](mailto:eccbc@eccbc.org)**

**ECCBC.org**

**CENTURY 21**

**DCG / Aguilard Realty**

101 N. 7th Street, P.O. Box 1258

Eunice, Louisiana 70535

Office (337) 457-9385

**Raymond Aguilard, Broker**



**KENDALL FONTENOT**

Agent

**StateFarm.com**

1110 W. Laurel  
Eunice, LA 70535

Phone:  
337-546-6501







# OUR LOGO

In 1992, the ECCBC commissioned the University of Louisiana at Lafayette art department to create a logo for the organization. After a meeting with Dwight Jodon, Pat Dossman and the department, approximately fifteen art students set about the task of designing an appropriate ensignia.

Several of the proposed designs centered around the organization's acronym, ECCBC. However, the winning design was a simple graphic. It symbolizes the semicircle staging used by musical ensembles globally. The image is one *in motion* as the conductor's baton sweeps across the design. This particular logo was selected because of its simplicity and because the ECCBC is determined to move forward into the future with the mission of sharing the gift of music with the residents of Acadiana.

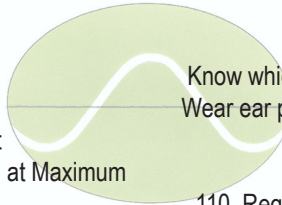
We will begin using the logo more frequently to identify the organization. We are proud to celebrate our twenty-first birthday this year, and are excited about our future. It is our desire that this logo become...*a mark of excellence!*



## How loud's loud?

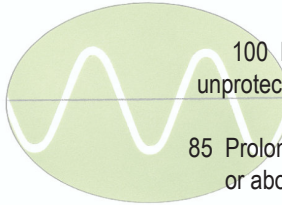
### DECIBELS

- 150** Firecracker
- 120** Ambulance Siren
- 110** Chainsaw, Rock Concert
- 105** Personal Stereo System at Maximum Level
- 100** Wood Shop, Snowmobile
- 95** Motorcycle
- 90** Power Mower
- 85** Heavy City Traffic
- 60** Normal Conversation
- 40** Refrigerator Humming
- 30** Whispered Voice
- 0** Threshold of Normal Hearing



Know which noises can cause damage. Wear ear plugs when you are involved in loud activity.

110 Regular exposure of more than 1 minute risks permanent hearing loss.



100 No more than 15 minutes unprotected exposure recommended.

85 Prolonged exposure to any noise at or above 85 decibels can cause gradual hearing loss.

*deci·bel* noun \ 'de-sə- 'bel, -bəl

1: a unit for expressing the relative intensity of sounds on a scale from zero for the average least perceptible sound to about 130 for the average pain level

2: degree of loudness; also : extremely loud sound —usually used in plural





# Hancock Bank<sup>®</sup>

2250 West Laurel Ave  
Eunice, LA  
457-3776  
hancockbank.com

# Darnall, Sikes, Gardes & Frederick

*A Corporation of Certified  
Public Accountants*



## From the L&L Family

We celebrate the memory of a  
very special friend and loved one...  
Betty Thibodeaux ~ *with all our love!*



## L & L Sandblasting Inc

1498 Hwy 190 Eunice

# Children's Choir

*Featured in*

## The Lion Sleeps Tonight

**Arien Harper**  
*Director*

**Connie C. Beaugh**  
*Accompanist*

**Megan LeDoux &  
Suzanne LaHaye**  
*Assistants*

Whitney Ardoin  
Anna Claire Attales  
Adelie Beaugh  
Alise Beaugh  
Cameron Berzas  
Camille Berzas  
Chloe Berzas  
Chloe Bullock  
J'slynn Daniels  
Isabella Dorsey

Alex Doucet  
Haleigh Doucet  
Kadence Paige Faulk  
Jeremiah Fruge'  
Victoria Fruge'  
Anna Gotte  
Katherine Gotte  
Nicholas Gotte  
Madyson Guillory  
Carlie Hebert

Noble Hebert  
Connor Jodon  
Parker Jodon  
Grason Lawson  
Alayni Reed  
Andrew Richard  
Trevor Richard  
Austin Stanford

*Special thanks to First United Methodist Church for providing rehearsal facilities.*

# REHABXCEL **Physical Therapy & Sports Medicine**

Locally Owned and Operated

Michael Driggs, DPT & Lee Miller, DPT  
 441 Moosa Blvd (337) 457-8164  
[www.rehabxcelpt.com](http://www.rehabxcelpt.com)

*Thank You*

*We kindly thank the following for their assistance with tonight's production:*

- |                |                   |                        |
|----------------|-------------------|------------------------|
| Keith Jodon    | Tammy Stanford    | Delsia Young           |
| Deyo Jodon     | Suzanne LaHaye    | Jack Taylor            |
| Berna Mire     | Megan LeDoux      | Stuart LaFleur         |
| Marcia Ortego  | Chris Fruge'      | Artists of FACE        |
| Ginny Moody    | Family            | First United           |
| Martha Guempel | Parker Jodon      | Methodist Church       |
|                | Glenn Durbin      | First Baptist Church   |
|                | Ed Deshaultelle   | Jean Lafitte           |
|                | John Miller       | National Park          |
|                | Jerry's Furniture | All of Our Advertisers |

**Patricia G. Dossman, CLU, LUTCF, CLTC**  
**Dwight R. Jodon, CLU, LUTCF, CLTC**  
 Agents  
 New York Life Insurance Company

337.457.1776





**El Dorado**  
 MEXICAN RESTAURANT

2307 N. Parkerson  
 Crowley, Louisiana

Phone (337) 785-0339      Fax (337) 785-0338

*Open*  
11 a.m.  
to  
10 p.m.

*One On*  
or  
*Take Out*

THE  
*Liberty Center*

Construction of this vaudeville silent movie house began in 1920. Financial failure halted construction on the *Electric Theater* with the outside walls only partially completed. Purchased by Claude Keller and A.F. McGee Sr., the theater was completed and opened July 19, 1924 as the New Liberty Theatre.

This *Premier Temple of Amusement*, is listed on the National Register of Historic Places by the United States Department of the Interior and has been included in the National Trust Guide of Great American Movie Theaters Preservation Press Guide published by the Smithsonian.



charles  
*Guillard*  
agency, inc.

1241 e. laurel 457-5231

OXYGEN • ACETYLENE • INDUSTRIAL GAS  
WELDING MACHINE REPAIRS • TORCH & REGULATOR REPAIRS

ALEXANDRIA  
318-443-6386

LAFAYETTE  
337-437-5701



JENNINGS  
337-618-1821

EUNICE  
337-457-8048



Here's to making  
Eunice a special  
place through  
music!

TRI-PARISH BANK  
P.O. BOX 1029 • EUNICE, LA 70535 PH. (337) 457-7341  
MEMBER F.D.I.C.

## ECCBC ALTO SECTION

Jennifer, Jenna,  
Nancy, Martha,  
Becky & Linda



SMITH *True Value* HARDWARE

300 E. Laurel Phone: (318) 457-3113  
Eunice, Louisiana 70535

Harry A. Smith, Jr. & Claire Smith  
Owners

# BECKY & BRIAN TANNER

BRAVO!

## ACADIAN MEDICAL CENTER

A CAMPUS OF MERCY REGIONAL MEDICAL CENTER

337-580-7500

[www.acadianmedicalcenter.com](http://www.acadianmedicalcenter.com)

**Anna's** Flowers & Gifts

235 A W. Walnut  
Eunice, LA

1-866-457-9368  
337-457-9368  
Fax: 337-457-9340

Connie Landreneau

**Red-D-Arc**  
**Welderentals**

1924 W. Laurel Ave.  
Eunice, LA 70535  
Ph: (337) 457-4196  
Fax: (337) 457-4197



Lewis McGee  
email: [lewisjmcgee@yahoo.com](mailto:lewisjmcgee@yahoo.com)  
[www.eunicerental.com](http://www.eunicerental.com)



Find us on Facebook! Click FB link on our home page: **ECCBC.org**

**LA'S #1**  
**Tobacco & Liquor Discount Outlet**

**TOBACCO PLUS**  
DISCOUNT OUTLET



# GUARANTY BANK

MEMBER FDIC  
457-7334

Serving Eunice, Ville Platte, Vidrine & Mamou



**Kevin J. Brown**  
Branch Manager

## St. Landry Homestead

FEDERAL SAVINGS BANK

101 North Sixth Street  
P.O. Box 9, Eunice, LA 70535  
457-8196

Why did Mozart get rid of his chickens?

*"They kept saying, 'Bach, Bach, Bach!'"*

What type of music are balloons scared of?

*Pop Music*

# Sears

SEARS, ROEBUCK AND CO.

340 E. Laurel  
Eunice, LA 70535

**PHIL YOUNG**  
Owner

## PICOU'S

PHONE 457-2218

## DRUG STORE

260 N. 2nd. St.  
EUNICE, LA 70535



Supported by our  
**Catholic  
Community**

St. Anthony  
St. Mathilda  
St. Thomas More

## OIL X-PRESS, INC.

10-MINUTE OIL CHANGE  
1530 West Laurel, Eunice  
Monday-Saturday

**Mark & Rebecca Daigle**  
Owners  
337-546-0014

## Trosclair Photography & Video Service

PHOTOGRAPHY OF DISTINCTION

9:00AM-5PM Mon-Fri

Sat-By appointment only

1651 W. Laurel Ave. Eunice, LA  
457-2500

**O BEAUTIFUL**

Join us in celebrating our all-American heritage! Come in for a free Express Facial using skin care products that are made in the USA!

HERLENORMAN.COM

Jan's Merle Norman  
337-546-6776  
1701 West Laurel Avenue Eunice  
Hours: Tuesday - Friday 9:00am - 5:00pm • Saturday 9:00am - 1:00pm

CELEBRATING 20 YEARS OF BEAUTY  
**MERLE NORMAN**  
MADE IN THE USA

© 2011 Merle Norman Cosmetics, Inc.

We're  
**Open for Beauty**

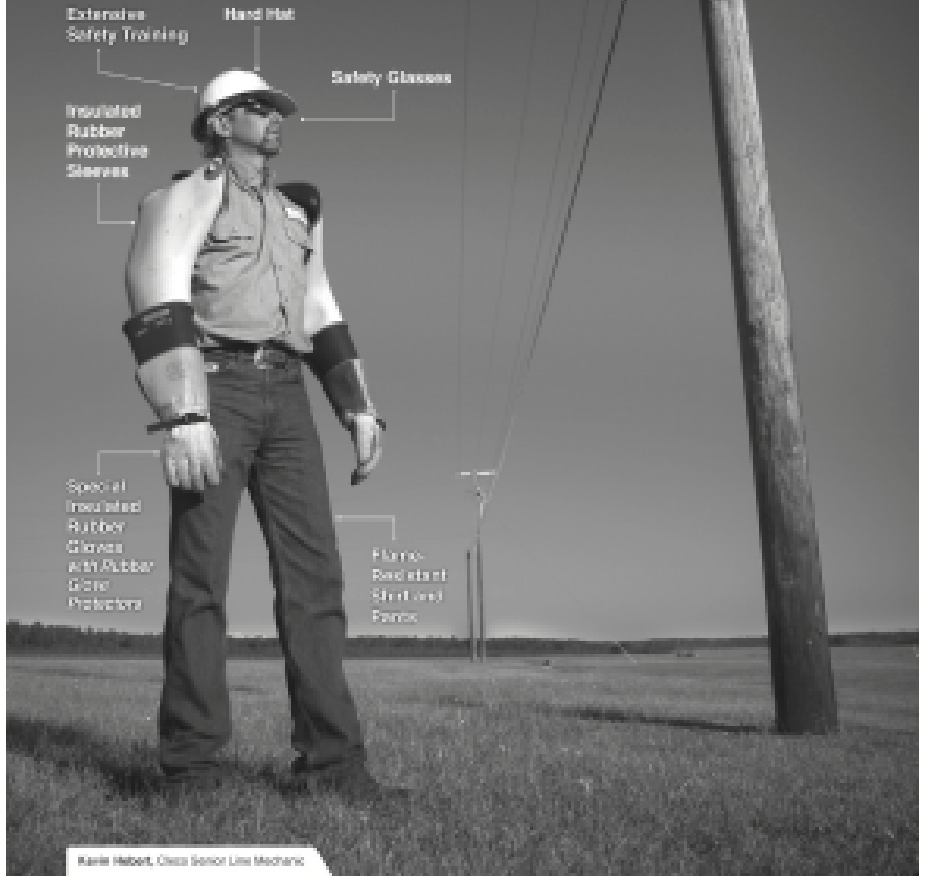
Enjoy one-stop shopping for the latest innovations in skin care and color at our Merle Norman Cosmetics Studio. Drop in today for a free makeover!

Jan's Merle Norman  
337-546-6776  
1701 West Laurel Avenue Eunice  
Hours: Tuesday - Friday 9:00am - 5:00pm • Saturday 9:00am - 1:00pm

Merle Norman Cosmetics Studios have been independently owned and operated since 1998.

**MERLE NORMAN**

# If this is how far Cleco goes to be safe around electricity, how far should you go?



Extensive Safety Training

Hard Hat

Safety Glasses

Insulated Rubber Protective Sleeves

Special Insulated Rubber Gloves with Rubber Glove Protectors

Flame Resistant Shirt and Pants

Kevin Hebert, Class Senior Line Mechanic

All this, and he goes to great lengths to be safe around power lines. How far is that going to be? He says, "It's not far at all. It's just being smart. You should do. Make the time to do it right. You should always stay away from downed lines. Report electricity and don't do it. It's that simple. It's that. For more electrical safety information, go to [www.cleco.com](http://www.cleco.com).

the people. the power.



EUNICE COMMUNITY CONCERT BAND & CHOIR