

LIBERTY CENTER

Eunice Community Concert Band & Choir, Inc.
presents



Then Sings
My Soul

July 13 & 14, 2017
7:00P.M.

EUNICE, LOUISIANA

OUR 55th CONCERT

1990

TWENTY-SEVENTH ANNIVERSARY

2017

PROGRAM

Then Sings My Soul

Stuart K. Hine, arr. Mary McDonald

Memory *from CATS*

Andrew Lloyd Webber, arr. John Leavitt

Dig a Little Deeper

from THE PRINCESS AND THE FROG

Randy Newman, arr. Mark Brymer

Sabbath Prayer

from FIDDLER ON THE ROOF

Jerry Bock & Sheldon Harnick, arr. John Leavitt

If I Were a Chipmunk

Matt Glass & Ed Key, arr. Gary Forsythe

Waltz No. 2

from Suite for Variety Stage Orchestra

Dmitri Shostakovich, arr. James Curnow

Nessun Dorma *from Turandot*

Giacomo Puccini, arr. Robert van Beringen

Jump In the Line

Belafonte, De Leon, Oller & Samuel, arr. Michael Brown

INTERMISSION

Love Is An Open Door

from FROZEN

Kristen Anderson-Lopez, arr. Mac Huff

A Disney Silly Sing-a-Long

arr. Alan Billingsley

Zip-A-Dee-Doo-Dah • Bibbidi-Bobbidi-Boo • Hakuna Matata
Chim Chim Cher-ee • Supercalifragilisticexpialidocious

Precious Lord, Take My Hand

Traditional, arr. Robert W. Smith

The Bare Necessities

Terry Gilkyson, arr. Paul Murtha

Selections from

The Phantom of the Opera

Andrew Lloyd Webber, arr. Warren Barker

Think of Me • Angel of Music • The Phantom of the Opera
All I Ask of You • The Point of No Return • The Music of the Night

“ Music is a moral law. It gives soul to the universe, wings to the mind, flight to the imagination, and charm and gaiety to life and to everything. PLATO

MEMBERS

FLUTE

Martha Bryant Breaux Bridge
Patricia Dossman Eunice
Nicholas Rougeau Eunice

CLARINET

Lou Arton Jeanerette
Sonya Castille New Iberia
Mary DeLaune Youngsville
Megan LeDoux Iota
Maggie Thibodeaux Opelousas
Laura Viator New Iberia

SAXOPHONE

Annie Cormier Church Point
Carmyn Darcey Loreauville
Ian Fontenet Basile
Maleki Pierson Eunice
Art Riedel Lafayette

TRUMPET

Lindsey Doucet Jennings
Jude Duplechain Loreauville
Glenn Durbin Eunice
Jerry Fruge' Loreauville
Seth Jones Egan
Cindy Mouton Scott
Joshua Stemplewski Iota

FRENCH HORN

Charles Guidry Maurice

TROMBONE

Jimi Bergeron Basile
Mike Boudreaux Lafayette
Dwight Manuel Lafayette
Bennett Narby Eunice

BARITONE

Terry Arton Jeanerette
Morgan Narby Eunice

TUBA

David Douget Crowley
Tony Kennedy Eunice
Joseph Stemplewski Iota

KEYBOARD

Connie C. Beagh Eunice
Jan Carboni Lafayette

PERCUSSION

Caroline Fruge' Rayne
Connor Jodon Eunice
Keith Jodon Eunice
John Phelan Harvey
Reed Rougeau Eunice

PERCUSSION Cont'd

Austin Stanford Chataignier
Tim Vasquez Alexandria

SOPRANO

Jan Carboni Lafayette
Patricia Dossman Eunice
Janice Edinger Crowley
Marian Fruge' Loreauville
Tina Hensgens Mowata
Shirley Jodon Eunice
Sarah Pulling Eunice
Sandy Reiners Opelousas
Phyllis Triggs Crowley

ALTO

Christie Brammer Crowley
Erika Carlson Rayne
Callie Dischler Eunice
Ellen Dunlap Vick
Jennifer Fowler Eunice
Maecy Fruge' Eunice
Victoria Fruge' Eunice
Martha Guempel Eunice
Annette Harrington Eunice
Ginger Jernigan Eunice
Rachel LaFargue Eunice
Linda LaFleur Eunice

TENOR

Ed Deshautelle Eunice
Richard Davis Eunice
Suzanne LaHaye Eunice

BASS

Jimmy Broussard Crowley
Zachary Cormier Church Point
Caroline Fruge' Rayne
Jerry Fruge' Loreauville
Deyo Jodon Eunice
Jeremy Ortego Eunice

PIANO ACCOMPANIST

Connie C. Beagh Eunice

MASTER OF CEREMONIES

Stephen Guempel Eunice

GENERAL MANAGER / COFOUNDER

Patricia Dossman Eunice

CONDUCTOR / COFOUNDER

Dwight Jodon Eunice

RHONDA FINK MOSER, O.D.
SARAH MOSER FRUGE', O.D.

301 S. SECOND STREET
P.O. BOX 511
EUNICE, LA 70535
PH: 337-457-2376



*Thanks to the Eunice
community for over 75
years of business!*

**Port of Krotz Springs
St. Landry Parish
State of Louisiana**

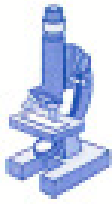


E. Lynn LeJeune
Executive Director

Where the inland waterways,
with our connections to the deep
draft and coastal waterways, rivers,
bayous and locks, are the
links to international
trade for our
Louisiana
farmers and
manufacturers.



**EUNICE MEDICAL
LABORATORY, INC.**



DAVID DARBONNE, MT (ASCP)

450 Moosa Blvd., Ste. C
Eunice, Louisiana 70535

Come see us for all your blood and labwork needs

Open 7am-5pm, Monday-Friday
Insurance, Medicare & Medicaid Accepted, 337-457-5562

**ECCBC
ALTO SECTION**

THE WORLD'S MOST FAMOUS AND
POPULAR LANGUAGE IS MUSIC. PSY

**Welcome, and thanks
for coming!**

**Darnall, Sikes,
Gardes &
Frederick**



*A Corporation
of Certified
Public Accountants*



St. Landry
HOMESTEAD[®]
Pineau Savings Bank



"People First. Since 1922."

840 East Laurel Ave.
Eunice, LA 70535

(337) 457-8196
StLandryHomestead.com



481 MOOSE BLVD
EUNICE, LA 70535
TELEPHONE (337) 457-9035
www.drduos.com



Clara Anolik, R.D.H.
Cindy Kivim, R.D.H.
DENTAL HYGIENISTS

24 HOUR NOTICE NECESSARY FOR CANCELLATION



i'm lovin' it[®]



Special Thanks to
First Baptist Church

*for providing the Community
Choir & Children's Choir with
rehearsal facilities!*



fbce.net

HEBERT MEDICAL GROUP, APMC
3521 Hwy. 190, Ste. S - Eunice, LA 70535

Charice M. Hebert, M.D.
Richard L. Hebert, II, M.D.
Donald W. Barnes, M.D.



**Gilbert Frey
Mona Cart
Janet Simon**
330 Howard
Iota, LA
337.779.2779



10-MINUTE OIL CHANGE
1530 West Laurel, Eunice
Monday-Saturday

Mark & Rebecca Daigle
Owners
337-546-0014

**Kiwanis
Young Children**
Priority One

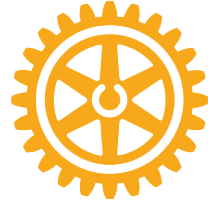


337.304.1727

www.cypressgroveplace.com



Rotary



EUNICE ROTARY CLUB EUNICE, LA



MOBILE CHECK DEPOSIT

Now available from
Basile State Bank!

Available for Apple & Android devices!

Visit our Website: www.basilebank.com



PUCHEU, PUCHEU & ROBINSON, LLP

Attorneys At Law

1. What kind of band doesn't play music?
2. Why do we say "amen" and not "awomen?"
3. Why did the kid put his head on the piano?
4. Why do hummingbirds hum?
5. What's green and sings?
6. What was the result when a piano fell down a mine shaft?
7. Why are pirates great singers?
8. What rock group has four guys who don't sing?
9. How do you make a band stand?
10. What type of music are balloons scared of?

1. A rubber band, 2. Because we sing "hymns," not "hers", 3. He wanted to play by ear, 4. They forgot the words, 5. Elvis Parsley, 6. A-flat minor, 7. They can hit the high C's, 8. Mount Rushmore, 9. Take away their chairs, 10. Pop music

Bijous

in the Cottage
Dana Gautreaux
 Owner
bijous@bellsouth.net



2120 W. Laurel Ave
 Eunice, LA 70535
 337-457-2202
 Fax: 337-457-2297



337-457-7138

Burgers • Seafood
PoBoys • Ice Cream
Breakfast



KENDALL FONTENOT

Agent

StateFarm.com

1110 W. Laurel
Eunice, LA 70535

Phone:
337-546-6501



Tim P. Fontenot, D.D.S. Tim S. Fontenot, D.D.S.

General Dentistry

www.fontenotdds.com Tel: (337) 457-1342
149 N. 3rd St. Eunice, LA 70535 Fax: (337) 457-1354

Joining
THE
ECCBC

The organization welcomes anyone who wishes to participate. There are no dues or auditions. Our sole purpose is to enjoy music and share it with others. Joining is easy! Simply call 337.457.1776, write for information (P.O. Drawer 912, Eunice, LA 70535), or complete one of the membership forms in the lobby tonight. ☘

**DATES OF OUR
2017 CHRISTMAS
CONCERT:**

**December 7 & 8
Thursday & Friday**

ECCBC
EUNICE COMMUNITY CONCERT BAND & CHOIR



CROWLEY, LOUISIANA



Tommy Hillman DDS

Lake Charles, LA

337.478.0531

Dentures in one day!

Immediate Dentures / Partial Dentures

Acadia Stor & Lok

Locally Owned & Operated
On Site Management
Climate Control Available
2 convenient locations

716 Crowley - Rayne Hwy
P.O. Box 365
Crowley, La 70527



Phone: 337-783-3431
Cell: 337-581-1445



P.O. Box 1089 - 300 West Park, Eunice, LA 70535
(337) 457-7334 fax (337) 457-2265 JDBANK.COM



NEW YORK LIFE FOUNDATION

Jerry's
Furniture Mart, Inc.



P.O. Box 286 EUNICE, LOUISIANA 70535
PHONE: 337-457-4272

Donald R. Richard, Jr.
ATTORNEY AT LAW

215 N. 2nd Street
Eunice, LA
337.546.3367



In memory...

Bright Stars! Rockets' Red Glare! Bombs Bursting in Air!
These are familiar words to our National Anthem.
To My family these words describe Our Little Chief.
His eyes were as bright as any star in the sky!
He could run like a rocket - a total ball of energy!
His laughter burst the silence in any room he entered!
To our favorite firecracker and the brightest star in the
Universe:

Cole Anthony Conner

I love you to the moon and back.

Shine bright, like me, Papa Jimmy Broussard

Love,

Cole Anthony Conner

Iberia
Community Band



NEW IBERIA, LA

RICE PALACE

A graphic of several golden rice stalks and grains, with red lightning bolt-like shapes behind them.

CROWLEY, LOUISIANA



**SUPPORT
YOUR LOCAL
ARTISTS**
Become a patron ...
Purchase local original artwork
Invite FACE to exhibit at your function
Help fund exhibitions

FMI call 337-224-8577

DR. MARTHA BRYANT, EdD



We have another Doctor in the Family!

The ECCBC is so very proud of Martha for earning her **Doctorate in Higher Education Leadership** from the University of Louisiana at Lafayette!



Alisha Jarreau We Dry Needle in New Roads!
1160 Hospital Road, Suite 100, New Roads, LA 70760



Eunice, LA

Oct 28 & 29, 2017

www.ExperienceLouisiana.org
To volunteer, call 337.457.1776

CONCERT TITLES

1990	July	<i>A Family Concert of Patriotism and Americana</i>
	Dec	<i>A Caroling Christmas</i>
1991	July	<i>A Grand Ole Summer</i>
	Dec	<i>Coming Home for Christmas</i>
1992	July	<i>Spirit of the South</i>
	Dec	<i>A Very Merry Christmas</i>
1993	July	<i>Rhapsody</i>
	Dec	<i>A Storybook Christmas</i>
1994	July	<i>Centennial</i>
	Dec	<i>The Most Wonderful Time of the Year</i>
1995	July	<i>For America</i>
	Dec	<i>A Kid's Christmas</i>
1996	July	<i>Regards to Broadway</i>
	Dec	<i>Season of Dreams</i>
1997	July	<i>Back in the Good Old Days</i>
	Dec	<i>It's Christmas</i>
1998	July	<i>Razzle Dazzle</i>
	Dec	<i>Candy Canes and Christmas</i>
1999	July	<i>Swing</i>
	Dec	<i>One Magic Christmas</i>
2000	July	<i>Celebrate 2000</i>
	Dec	<i>Gloria!</i>
2001	July	<i>Dare to Dream</i>
	Dec	<i>Sing We Now of Christmas</i>
2002	July	<i>America: My Home</i>
	Dec	<i>Christmas Joy</i>
2003	July	<i>That's Entertainment</i>
	Dec	<i>Jubilate</i>
2004	July	<i>Summer Serenade</i>
	Dec	<i>Sing Noel</i>
2005	July	<i>Encore!</i>
	Dec	<i>A Christmas Festival</i>
2006	July	<i>Viva Musica!</i>
	Dec	<i>The Spirit of Christmas</i>
2007	July	<i>Star-Spangled Summer</i>
	Dec	<i>Fireside Christmas</i>
2008	July	<i>Rhythm of Life</i>
	Dec	<i>Celebrate Christmas</i>
2009	July	<i>Sounds Like Summer</i>
	Dec	<i>Laughing All the Way</i>
2010	July	<i>Thanks for the Memories</i>
	Dec	<i>Bells of Joy</i>
2011	July	<i>It's Showtime!</i>
	Dec	<i>Noel</i>
2012	July	<i>Let Me Entertain You!</i>
	Dec	<i>Good Tidings To All</i>
2013	July	<i>Let Freedom Ring</i>
	Dec	<i>Christmas Peace</i>
2014	July	<i>Sweet Sounds of Summer</i>
	Dec	<i>Merry Christmas Everyone</i>
2015	July	<i>25th Anniversary Concert</i>
	Dec	<i>On With the Show!</i>
2016	July	<i>Summer Pops!</i>
	Dec	<i>A Jolly Jingling Christmas</i>
2017	July	<i>Then Sings My Soul</i>

PERFORMING ARTS OPPORTUNITIES

- ♦ Houston Museum of Natural Science, **Gladiators: Heroes of the Colosseum** – Open now thru Sept 4, Houston, TX
- ♦ Houston Museum of Natural Science, **Faberge: Royal Gifts featuring the Trellis Egg Surprise from Her Majesty Queen Elizabeth II** – Open now thru December 19, Houston, TX
- ♦ Paragon, **Travis Tritt** – July 15, Marksville
- ♦ Saenger Theatre, **David Blaine** – July 16, New Orleans
- ♦ Drum Corps International, **Tour of Champions** – July 21, Houston
- ♦ Drum Corps International, **Drums Across Cajun Field** – July 24, Lafayette
- ♦ Saenger Theatre, **Idina 2017 World Tour** – July 25, New Orleans
- ♦ Acadiana Center for the Arts, **Runaway Dish & Clare Cook Dance Theater, STIR** – August 3-5, Lafayette
- ♦ Saenger Theatre, **Bring It! LIVE** – August 5, New Orleans
- ♦ Golden Nugget, **Tanya Tucker** – August 12, Lake Charles
- ♦ Raising Cane's River Center, **Outcry Tour 2017** – August 24, Baton Rouge
- ♦ Golden Nugget, **Clint Black** – August 25, Lake Charles
- ♦ Golden Nugget, **The Charlie Daniels Band** – September 1, Lake Charles
- ♦ Golden Nugget, **The Commodores** – September 2, Lake Charles
- ♦ Cajundome, **Janet Jackson State of the World Tour** – September 7, Lafayette
- ♦ Grand Opera House, **Wayne Toups Acoustic** – September 29, Crowley
- ♦ Cajundome, **Cirque Du Soleil CRYSTAL** – October 5-8, Lafayette
- ♦ Jefferson Performing Arts Center, **CHICAGO The Musical** – October 6-15, Metairie
- ♦ Cajundome, **Paw Patrol Live!** – October 7-8, Lafayette
- ♦ Saenger Theatre, **Escape to Margaritaville** – October 20-28, New Orleans
- ♦ Lutcher Theater, **Rent** – October 24, Orange, TX
- ♦ LSU Eunice, **EXPERIENCE LOUISIANA FESTIVAL** – October 28-29, Eunice
- ♦ Grand Opera House, **The Amazing Max** – October 29, Crowley
- ♦ Grand Opera House, **Pine Leaf Boys** – November 10, Crowley
- ♦ Raising Cane's River Center, **Paw Patrol Live!** – November 18-19, Baton Rouge
- ♦ Saenger Theatre, **The King and I** – November 14-19, New Orleans
- ♦ Liberty Center, **ECCBC Christmas Concert** – December 7-8, Eunice, LA
- ♦ Grand Opera House, **Marc & Ted Broussard** – December 15, Crowley
- ♦ Saenger Theatre, **The Legend of Zelda - Symphony of the Goddesses** – Dec 15, New Orleans
- ♦ Lutcher Theater, **The Texas Tenors** – December 16, Orange, TX

2018

- ♦ Lutcher Theater, **Cinderella** – January 19-20, Orange, TX
- ♦ Lutcher Theater, **A Night With Janis Joplin** – January 25, Orange, TX
- ♦ Lutcher Theater, **A Gentleman's Guide to Love and Murder** – February 9, Orange, TX
- ♦ Jefferson Performing Arts Center, **The Hunchback of Notre Dame** – Feb 23-Mar 4, Metairie
- ♦ Grand Opera House, **Cajun Accordion Kings hosted by Steve Riley** – March 3, Crowley
- ♦ Saenger Theatre, **The Phantom of the Opera** – March 14-25, New Orleans
- ♦ Saenger Theatre, **Rent** – April 17-22, New Orleans
- ♦ Lutcher Theater, **CHICAGO The Musical** – April 20-21, Orange, TX

ST. LANDRY PARISH TOURIST COMMISSION cajuntravel.com

DRUM CORPS INTERNATIONAL dci.org

ACADIANA SYMPHONY ORCHESTRA acadianasympphony.org

SAENGER THEATRE saengernola.com

GRAND OPERA HOUSE thegrandoperahouse.org

MAHALIA JACKSON THEATER mahaliajacksontheater.com

ACADIANA CENTER FOR THE ARTS acadianacenterforthearts.org

HEYMANN CENTER heymanncenter.com

RAISING CANE'S RIVER CENTER raisingcanesrivercenter.com

CAJUNDOME cajundome.com

NEW ORLEANS OPERA ASSOCIATION neworleansopera.org

LUTCHER THEATER lutcher.org

JEFFERSON PERFORMING ARTS CENTER jpas.org

Vige, Tujague & Noel



Certified
Public
Accountants

151 N. 2nd Street
Eunice, LA
457-9324



DR. & MRS.
REGINALD
SEGAR

BECKY & BRIAN TANNER
BRAVO!



EUNICE
PLAYERS'
THEATRE



Red, White and Tuna

starring Van Reed and Kevin Miller

PERFORMANCES

July 27, 28, 29, 30 and

Aug 2, 4, 5, 6

Season ticket holders call for reservations:

337-376-6610

Single tickets available at David's Hair:

337-546-0163

Louisiana...did you know? LA was named in honor of King Louis XIV. LA has the tallest state capitol building in the United States; the building is 450 feet tall with 34 floors. The Superdome in New Orleans is the world's largest steel-constructed room unobstructed by posts. Metairie is home to the longest bridge over water in the world, the Lake Pontchartrain causeway. The state insect is the Honeybee. The oldest town in Louisiana is Natchitoches which was established in 1714.

Louisiana **FESTIVALS 2017**

Gueydan Duck Festival, Gueydan, Aug 24-27, duckfestival.org

International Rice Festival, Crowley, Oct 19-22, ricefestival.com

LA Cotton Festival, Ville Platte, Oct 10-15, louisianacottonfestival.com

Festivals Acadiens et Creoles, Lafayette, Oct 12-15, festivalsacadiens.com

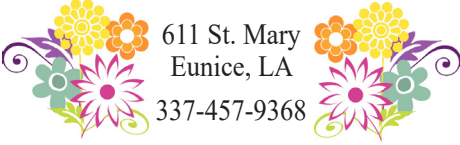
LA Gumbo Festival, Chackbay, Oct 13-15, lagumbofest.com

EXPERIENCE LOUISIANA FESTIVAL, Eunice, Oct 28-29, experiencelouisiana.org

Anna's Flowers & Gift Shop

Come visit us at our
NEW LOCATION!

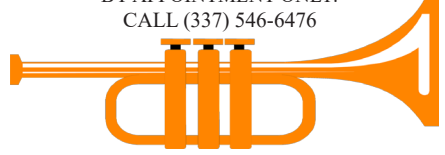
Opening Soon!



611 St. Mary
Eunice, LA
337-457-9368

GLENN DURBIN

Income Tax Preparation
35 Years Experience
Specializing in individual &
small business tax returns
BY APPOINTMENT ONLY:
CALL (337) 546-6476



Jason M. Smith,
D.C.

337-457-1376

Smith

FAMILY

200 N. 2nd St.
Eunice, LA 70535
Chiropractic & Wellness, LLC
www.SmithfamilyChiropractic.net

Twisted Wings

1669 Hwy 190 W. Laurel
Eunice, LA
337-466-3993



Beta Sigma Phi

EUNICE

Proud Supporter
of the ECCBC!



charles Guillard

agency, inc.



1241 E. Laurel
457-5231

PICOU'S

PHONE 457-2218

DRUG STORE

260 N. 2nd. St.
EUNICE, LA 70535

OXYGEN - ACETYLENE - INDUSTRIAL GAS
WELDING MACHINE REPAIRS - TORCH & REGULATOR REPAIRS

EUNICE
337-457-9348

LAFAYETTE
337-637-6781

TOMMY HORMELL



ALEXANDRIA
337-443-6386

JENNINGS
337-616-1821

WESTLAKE
337-683-4960

THE
Organization
Established in 1990

The Eunice Community Concert Band & Choir, Inc. was organized in February of 1990 with the intent to promote vocal and instrumental music in Eunice and the surrounding area. The organization is open to anyone who enjoys and appreciates vocal and instrumental music. There are no auditions or dues. We depend solely on the contributions of merchants and individuals and provide two concerts each year, July and December. The organization is operated by volunteers and pays no salaries.

In the last twenty-seven years the band and choir has produced fifty-four concerts. Also during these twenty-seven years, we have provided music for: Eunice July Fourth celebrations, LSUE commencement exercises, city inaugurations, Eunice Centennial Celebration (performing an original work by Dr. Quincy Hilliard, ASCAP, commissioned by the ECCBC for the celebration), LSUE community fun days, Eunice Christmas celebrations, and presented concerts in Crowley, Oakdale, Ville Platte, Lafayette and New Iberia. Several members of the community choir participated in a concert at Carnegie Hall in New York City in 1994. Joining sing-

ers from across the country, the group was directed by Dr. James Haygood and world-renowned choral conductor John Rutter.

The ECCBC has enjoyed much success since 1990. Membership in the organization has grown to over 180. For any given concert there may be as few as forty or as many as eighty of those members performing on stage. For many, the rehearsal season provides a wholesome social activity and an opportunity to meet new friends.

The organization adds to the uniqueness of this city. *Very few* American cities the size of Eunice have a musical organization such as the ECCBC. We are proud of all that we have done and look forward to serving the Eunice area with quality, family programs for many years to come. ☘

CONTACT US:

ECCBC / P.O. Drawer 912

Eunice, Louisiana 70535

PH: 337.457.1776

Fax: 337.457.9543

Email: eccbc@eccbc.org

ECCBC.org



DSB, CPA's
DUGAS, SOILEAU & BREAU, L.L.C.
CERTIFIED PUBLIC ACCOUNTANTS

122 East 5th Street • Post Office Drawer 307
Crowley, LA 70527-0307
phone (337) 783-0650 fax (337) 783-7238

*Music washes away from the soul the
dust of everyday life.*



David Ltd.
HAIR & NAIL SALON

546-0163

DAVID W. MANUEL
Owner

204 S. Second
Eunice, LA 70535



**Don &
Debbie
Leonards**



OUR LOGO

In 1992, the ECCBC commissioned the University of Louisiana at Lafayette art department to create a logo for the organization. After a meeting with Dwight Jodon, Pat Dossman and the department, approximately fifteen art students set about the task of designing an appropriate ensignia.

Several of the proposed designs centered around the organization's acronym, ECCBC. However, the winning design was a simple graphic. It symbolizes the semicircle staging used by musical ensembles globally. The image is one *in motion* as the conductor's baton sweeps across the design. This particular logo was selected because of its simplicity and because the ECCBC is determined to move forward into the future with the mission of sharing the gift of music with the residents of Acadiana.

We are proud to celebrate our twenty-seventh birthday this year, and are excited about our future. It is our desire that this logo become...*a mark of excellence!*

Four selections on tonight's program are from Walt Disney productions: *The Princess and the Frog*, *Frozen*, *The Jungle Book* and a medley from other Disney films.

WALT DISNEY



Here are seven interesting Disney tidbits:

He came from humble beginnings.

Walt was the voice of Mickey Mouse.

Disney produced propaganda films for the U.S. government during World War II.

He was a train buff.

The initial plans for Disneyland were small-scale.

He won more Academy Awards than anyone else.

Disney wasn't cryogenically frozen.

ZEB STEARNS, M.D.

Family Practice

Hours: M - F / 8:00 - 5:00



450 Mcoosa Blvd., Ste. A
Eunice, LA 70535

Phone: (337) 546-6646

Fax: (337) 546-0111

LSUE

EUNICE

SUCCESS STARTS HERE.

Children's Choir

Featured in *If I Were a Chipmunk*

Connie C. Beaugh, *Accompanist*

Megan LeDoux, *Assistant*

Suzanne LaHaye, *Assistant*

Carter Bertrand
Alcide Broussard
Amelie Broussard
Daxton Broussard
Peyton Collins
Kylee Crochet
Cole Eddins
Garrett Eddins
Madeline Eddins
Braylin Fontenet
Jackson Fontenet
Wesley Fontenet
Annelise Kate Fruge

Madelyn Marie Fruge
Mary Grace Fruge
Emily Gaspard
Hanson Jodon
Hadley Johnson
Stranton Johnson
Audrey LeDoux
Shelby Niles
Catherine Ortego
Natalie Ortego
Evelyn Pitre
Josephine Rodriguez



Like us on Facebook!

www.facebook.com/eccbc

PUCCINI's *Nessun Dorma*

from the opera **TURANDOT**

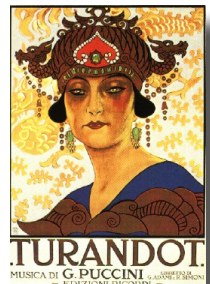
The Premise: Princess Turandot's prospective suitors must answer three riddles in order to marry her. None has ever done so.

The set-up is absolutely bizarre. Picture the scene: our hero, Calaf, is one of three suitors for the delightfully picky Princess Turandot. He has answered the three riddles, nonetheless she still does not want to marry him.

As a weird sort of challenge, Calaf says that if Turandot can correctly guess his name, she may execute him (?) but if she can't, then she must marry him (?!?!?!). As he kneels before her, the "Nessun Dorma" theme makes a first appearance, to his words, "Il mio nome non sai" (You don't know my name).

In a whimsically sociopathic move, the Princess decides that 'None shall sleep' (the literal translation of 'Nessun Dorma') in the entire kingdom until Calaf's name is discovered. If none of her subjects are able to come up with the correct name, all of them (ALL OF THEM) will be executed. Which is obviously fine and not cause for concern. HMMMMMM!!!!!!

NESSUN DORMA, one of the most famous arias in all of opera, will be performed by the concert band on tonight's program.



Thank You

*We kindly
thank the
following
for their
assistance
with tonight's
production:*

Sarah Pulling
Megan LeDoux
Deyo Jodon
Troy Breaux
Jan Carboni
Seth Jones

Keith, Parker &
Connor Jodon
Suzanne LaHaye
Jimi Bergeron
Craig & Christie
Brammer
First Baptist
Church

Berna Mire
Tammy Stanford
Katie Richard
Brad Richard
The Chris Fruge'
Family
City of Eunice
Our Advertisers

REHABXCEL **Physical Therapy & Sports Medicine**

Locally Owned and Operated

Michael Driggs, DPT & Lee Miller, DPT
441 Moosa Blvd (337) 457-8164
www.rehabxcelpt.com

Patricia G. Dossman, CLU, LUTCF, CLTC
Dwight R. Jodon, CLU, LUTCF, CLTC
Agents
New York Life Insurance Company

337.457.1776



Ardoin's FUNERAL HOMES

1301 W. Laurel - Eunice, LA 70535

www.ardoinfuneralhomes.com

Eunice - Ville Platte - Mamou - Basile - Iota

Serving Families Since 1938

337-457-3371

LIBERTY CENTER

Construction of this vaudeville silent movie house began in 1920. Financial failure halted construction on the *Electric Theater* with the outside walls only partially completed. Purchased by Claude Keller and A.F. McGee Sr., the theater was completed and opened July 19, 1924 as the New Liberty Theatre.

This *Premier Temple of Amusement*, is listed on the National Register of Historic Places by the United States Department of the Interior and has been included in the National Trust Guide of Great American Movie Theaters Preservation Press Guide published by the Smithsonian.



Dixie 
Titles & More, LLC
Becky & Mark Daigle

1830 West Laurel Ave
Eunice, LA 70535

Phone: 337-466-3777
Fax: 337-466-3631

Kermen D. Beauchamp, M.D.

DIPLOMATE, AMERICAN BOARD OF PEDIATRICS CHILDREN AND ADOLESCENT MEDICINE



Office Hours: Monday-Friday
9AM - 12 Noon & 1PM - 5PM

(337) 457-2301

3521 Hwy 190, Suite R, Eunice, LA 70535

The
PHANTOM
of the
OPERA



Andrew Lloyd Webber's **THE PHANTOM OF THE OPERA**

The musical opened in London's West End in 1986, and on Broadway in 1988. It won the 1986 Olivier Award and the 1988 Tony Award for Best Musical, and Michael Crawford (in the title role) won the Olivier and Tony Awards for Best Actor in a Musical.

It is the longest running show in Broadway history by a wide margin, and celebrated its 10,000th Broadway performance on 11 February 2012, the first production ever to do so. It is the second longest-running West End musical, after Les Miserables, and the third longest-running West End show overall, after The Mousetrap.

With total estimated worldwide gross receipts of over \$5.6 billion and total Broadway gross of \$845 million, Phantom was the most financially successful entertainment event until The Lion King passed it in 2014. By 2011, it had been seen by over 130 million people in 145 cities across 27 countries, and continues to play in London and New York.

We Take The Worry Out Of Water.
Superior Water
RainSoft
Water Treatment Systems



337-237-1165

SUPERIORWATERLA.com

ACADIAN
MEDICAL CENTER
A CAMPUS OF MERCY REGIONAL MEDICAL CENTER

337-580-7500

www.acadianmedicalcenter.com

Open
11a.m.
to
10p.m.



Dine In
or
Take Out

Phone
337-783-0339

2307 N. Parkerson
Crowley, Louisiana

Fax
337-785-0338

Monty N. Heinen

M.D.F.A.C.O.G.

Obstetrics & Gynecology



Mon. - Wed. 8:00-5:00

Thurs. 8:00-4:00

Friday 9:00-12:00

3448 Hwy. 190
Eunice, Louisiana 70535

Ph. 337-546-0BDR
(8237)
Fax 337-550-7257



FRUGÉ LUMBER COMPANY
GENERAL CONTRACTORS

601 north eight street • Eunice, Louisiana 70535
phone (337) 457-3077

fax (337) 457-4129

The Flower House

Fresh & Silk Floral Arrangements-Plants
Gift Baskets-Balloon Bouquets-Unique Gift Items



Ethel Meche
(337) 546-0257

450 N. 2nd Street
Eunice, La. 70535

SMITH *True Value* HARDWARE

300 E. Laurel • Phone: (318) 457-3113
Eunice, Louisiana 70535

Harry A. Smith, Jr. & Claire Smith
Owners

Call Us First for all of your home health needs!



Eunice Community Home Health

A Branch of Acadia HomeCare

3581 Hwy 190 | Eunice, LA | 337.550.0002

www.LHCGroup.com



BERTRAND'S
PRINTING & OFFICE SUPPLIES, Inc.

Tel: 337-457-0609(P) - 4198(O)

Fax: 337-457-7878(P) - 3722(O)

Drs. Miller and Miller

Your *Vision Source*

Family Vision Care • Contact Lens Specialists
Diagnosis/Treatment of Eye Diseases • Refractive Surgery Co-Management

Dr. J.D. Miller, Jr.

Diplomate, American Board of Optometrist

350 Moosa Blvd. • Eunice, Louisiana 70535

Phone: 337-457-5277 Fax 337-457-5271

www.visionsource-drjack.com



WHITNEY®

2250 W. Laurel Avenue
Eunice, LA 70535 337-457-3776



A Sacrifice of Praise...
Hebrews 13:15

FUMC EUNICE

Eunice

ABOUT

Founded: 1894

Prairie Cajun Capital of LA

Mayor: Scott A. Fontenot

2010 Population: 10,398

Number of Households

2006-2010: 3,912

Land Area: 5.13 square miles

Parishes: St. Landry & Acadia

Source: US Census Bureau



THINGS TO DO

Eunice Depot Museum - South C.C. Duson

Drive one block east of the Liberty Center, closed Mondays

Jean Lafitte Prairie Acadian Culture Center - 250 West Park Avenue, Open

Daily (closed Christmas), National Park Service, U.S. Department of the Interior

The Liberty Center for the Performing Arts - Est. 1924, Corner of

Park Ave. & Second Streets, host to a wide variety of civic and cultural functions throughout the year

Rendez-Vous des Cajuns Cajun Music Radio & TV Show - Saturdays,

6:00pm, Liberty Center

Savoy Music Center Jam Session - Saturdays, 9:30-11:30am, 4413 Hwy 190

Cajun Music Hall of Fame and Museum - South C.C. Duson Drive, a block east of the Liberty Center, open Tuesday-Saturday

Eunice Mardi Gras Festival - February 9-13, 2018

World Championship Crawfish Etouffee Cookoff - March 2018

Eunice Festival of the Arts and LSU-E Community Day - LSU-E Campus

3rd Sunday in April, annually

Fourth of July Celebration - Fireworks at Eunice Recreation Center, July 4, annually

Experience Louisiana Festival - October annually, Campus of LSU Eunice

CITY OF EUNICE

Mayor Scott A. Fontenot

I. Jackson Burson,

Councilman at Large

COUNCIL MEMBERS

Jason Bertrand

Marion "Nootsie" Sattler

Germaine Simpson

Dale Soileau

A wonderful place to live.

A musical place to visit.



Grand Opera House
of the South
Crowley, Louisiana

TheGrandOperaHouse.org

SEASON TICKET PERFORMANCES

- Wayne Toups Acoustic, Sept 29, '17
- Pine Leaf Boys, Nov 10, '17
- Cajun Accordion Kings hosted by Steve Riley, Mar 3, '18
- Caesar, Apr 23, '18
- Resurrection - Journey Tribute, TBA

Other GRAND SHOWCASE PERFORMANCES

- Marc & Ted Broussard, Dec 15, '17
- The Lost Bayou Ramblers, Jan 26, '18

FAMILY SERIES

- The Amazing Max, Oct 29, '17
- Goldilocks and the 3 Bears, Feb 16, '18
- Johnny Peers' & The Muttville Comix, Mar 12, '18

The Grand Opera House of the South

505 N Parkerson Avenue, Crowley, LA
337.785.0440



DR. CRAIG M.
BRAMMER,
OPTOMETRIST

419 N Avenue F, Crowley, LA 70526
337-783-3072



LA'S #1
Tobacco & Liquor Discount Outlet

TOBACCO PLUS DISCOUNT OUTLET





WoodmenLifeSM

**Life Insurance Society, Maple Lodge 243
Eunice, LA**

Life Insurance • Annuities • Investments

Cecil LeBleu Phone: 337-580-1174

Field Representative



Prairie Acadian Cultural Center JEAN LAFITTE NATIONAL HISTORIC PARK & PRESERVE

Discover the life of Louisiana's prairie Cajuns through ranger programs, exhibits, artifacts, and films. Kids can explore the center and earn a badge with the Junior Ranger program. The center's bookstore has books, music, children's books, and craft items on sale. Admission to the center is free.

SATURDAYS: 2:45pm Music Session, 4:00pm Food Demonstration/Tasting

**Open Tuesday-Friday 9:30 a.m.-4:30 p.m., Saturday 9:30 a.m.-6:00 p.m.
250 West Park Avenue, Eunice 337-457-8499**



Supported by our
**Catholic
Community**

**St. Anthony
St. Mathilda
St. Thomas More**

Sears

**SEARS, ROEBUCK AND CO.
340 E. Laurel
Eunice, LA 70535**

**PHIL YOUNG
Owner**

Trosclair Photography & Video Service

**PHOTOGRAPHY OF DISTINCTION
9:00AM-5PM Mon-Fri
Sat-By appointment only
1651 W. Laurel Ave. Eunice, LA
457-2500**

SERVICE Above Self

CROWLEY ROTARY CLUB



Color me!

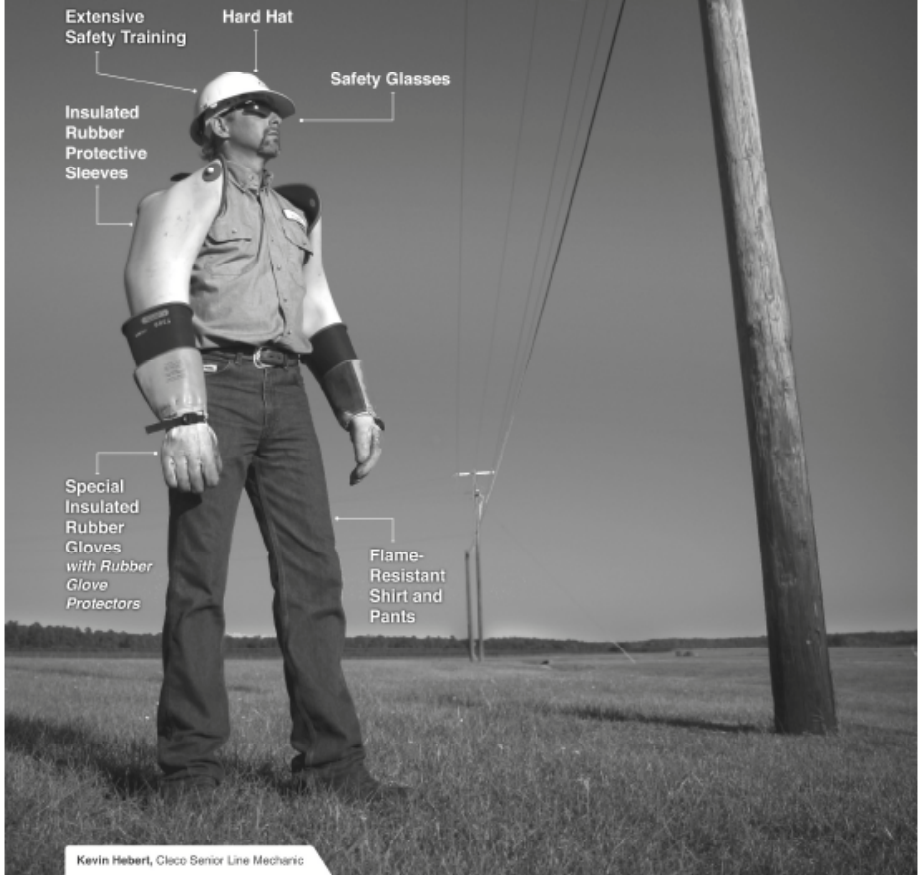


What is the subject of this picture? _____

Where is it? _____

Quick Fact: After 18 months of construction, the castle was completed in July 1971. It is 189 feet tall measured from the concrete bottom of the water - filled moat that contains approximately 3.37 million US gallons of water. It is 100 feet taller than the Sleeping Beauty Castle in California.

If this is how far Cleco goes to be safe around electricity, how far should you go?



At Cleco, we go to great lengths to be safe around power lines. Here are a few things you should do. Never trim trees or dig around power lines. And always stay away from downed lines. Respect electricity and it will do its job. We'll make sure of that. For more electrical safety information, go to cleco.com.

Our people. Your power.



EUNICE COMMUNITY CONCERT BAND & CHOIR