

FIRST BAPTIST CHURCH

Eunice Community Concert Band & Choir

presents



Summertime

July 13 & 14, 2023

7:00P.M.

EUNICE, LOUISIANA

OUR 65th CONCERT

1990

THIRTY-THIRD ANNIVERSARY

2023

PROGRAM

- Papa Loves Mambo** arr. Mark Hayes
- When I'm Sixty-Four** Lennon & McCartney, arr. Alan Billingsley
- The Prayer** arr. Teena Chinn
- We Don't Talk About Bruno** from Encanto arr. Mark Brymer
- Rockin' Robin** arr. Andy Beck
- España Cañi** arr. John Moss
- Nessun Dorma** from Turandot Puccini, arr. Robert van Beringen
- A Tribute to Gershwin** arr. Jack Bullock
*I Got Rhythm • 'S Wonderful • Embraceable You • Fascinating Rhythm •
The Man I Love • But Not For Me • How Long Has This Been Going On •
Oh, Lady Be Good! • Someone to Watch Over Me • Swanee • Rhapsody in Blue*
- INTERMISSION
- Love Is An Open Door** from Frozen arr. Mac Huff
- We Will Remember** Bradley Knight
- The Jungle Book (Choral Highlights)** arr. Roger Emerson
The Bare Necessities • I Wan'na Be Like You • Trust In Me
- Hernando's Hideaway** from The Pajama Game arr. Ralph Ford
- Sheherazade** Rimsky-Korsakov, arr. Jay Bocook
- Hey Baby** arr. Tom Wallace



The ECCBC is grateful to the First Baptist Church Eunice Family for graciously opening your doors to the ECCBC Family for rehearsals and performances. We appreciate your generosity!

PERSONNEL

FLUTE

Martha Bryant Breaux Bridge
Patricia Dossman Eunice
Nadia Fontenot Ville Platte
Kira Gauthier Pine Prairie
Allison Jones Lafayette
Bridget Mabe Ville Platte
Julie Mabe Ville Platte
Stacy Prejean Lyons Point
Elizabeth Vidrine Grand Prairie

CLARINET

Camille Berzas Basile
Grace Bordelon Pine Prairie
Sonya Castille New Iberia
Abigail Hazelton Ville Platte
Megan LeDoux Iota
Kathryn Lee Bayou Chicot
Glen Porter Eunice
Laura Viator New Iberia

BASS CLARINET

Kelsey Marcantel Basile

SAXOPHONE

Jasmine Carter Eunice
Breanna Fields Basile
Michael Smith Pine Prairie
Jackson Williams Basile

TRUMPET

Jalynn Campbell Pine Prairie
John Havard Opelousas
Seth Jones Lafayette
Olivia Lauterbach Ville Platte
Cindy Mouton Scott
James Naquin New Iberia
Joseph Stemplewski Iota
Sarah Sullivan Ville Platte
Zeke Trahan Basile
Tavia Vuillemont Basile

FRENCH HORN

Madeline Eddins Iota
Michael McElroy Eunice
Kelly Monier Ville Platte

TROMBONE

Jimi Bergeron Basile
Alex Guidroz Basile
Dwight Manuel Lafayette

BARITONE

John Bordelon Pine Prairie

TUBA

Jay Bourque Eunice
David Douget Crowley

KEYBOARD

Connie C. Beaugh Eunice
Jan Carboni Lafayette

PERCUSSION

John Cortez Basile
Phillip Gaspard Eunice
Keith Jodon Eunice
John Phelan Harvey
Tim Vasquez Alexandria

SOPRANO

Angela Callahan Crowley
Jan Carboni Lafayette
Alexa Dischler Basile
Patricia Dossman Eunice
Shirley Jodon Eunice
Tina Hensgens Mowata
Dori Menard Eunice
Stacy Prejean Lyons Point
Sandy Reiners Lawtell
Melanie Soileau Ville Platte
Rose Toepfer Eunice
Jasmine Vidrine Eunice
Lynee West Pine Prairie

ALTO

Madeline Bourque Eunice
Callie Dischler Eunice
Jennifer Fowler Eunice
Victoria Fruge Eunice
Martha Guempel Eunice
Ginger Jernigan Eunice
Joyce Johnson Eunice

Dolores Peterson Eunice
Tavia Vuillemont Basile

TENOR

Jeanne Eddins Iota
Rick Peterson Eunice
Glen Porter Eunice
Reece Romero Basile
Robert Soileau Ville Platte

BASS

Randy Aguillard Eunice
Jimi Bergeron Basile
Jimmy Broussard Crowley
Michael McElroy Eunice
Greg Milton Crowley

LIGHTING

Paul Fowler Eunice

VISUAL MEDIA

Tammy Stanford Chataignier

SOUND

Rocky Ogea Eunice

LOBBY

Joy Jodon Eunice
Berna Mire Eunice
Katie Richard Eunice
Brad Richard Eunice

MASTER OF CEREMONIES

Stephen Guempel Eunice

SPECIAL GUEST

Van Reed Eunice

PIANO ACCOMPANIST

Connie C. Beaugh Eunice

GENERAL MANAGER / COFOUNDER

Patricia Dossman Eunice

CONDUCTOR / COFOUNDER

Dwight Jodon Eunice

RHONDA FINK MOSER, O.D.
SARAH MOSER FRUGE', O.D.

301 S. SECOND STREET
P.O. BOX 511
EUNICE, LA 70535
PH: 337-457-2376



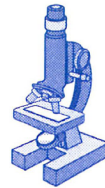
*Thanks to the Eunice
community for over 75
years of business!*



2250 W. Laurel Avenue
Eunice, LA 70535 337-457-3776

**EUNICE MEDICAL
LABORATORY, INC.**

DAVID DARBONNE, MT (ASCP)
450 Moosa Blvd., Ste. C
Eunice, Louisiana 70535



Come see us for all your blood and labwork needs

Open 7am-5pm, Monday-Friday
Insurance, Medicare & Medicaid Accepted, 337-457-5562

**JED & CINDY
REVIERE**

SUPPORTING THE

Performing
Arts

DSB,

CPA'S

DUGAS, SOILEAU & BREAUX, L.L.C.
CERTIFIED PUBLIC ACCOUNTANTS

*Music washes
away from the soul
the dust of everyday life.*

122 East 5th Street
Post Office Drawer 307
Crowley, LA 70527-0307
phone (337) 783-0650
fax (337) 783-7238

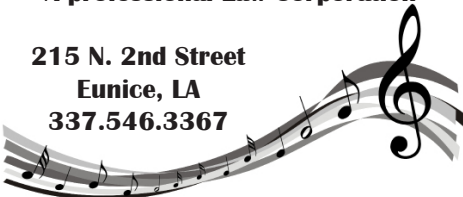


337.304.1727 www.cypressgroveplace.com

Donald R. Richard, Jr.
Attorney At Law

Donald L. Mayeux
A professional Law Corporation

215 N. 2nd Street
Eunice, LA
337.546.3367



Special Thanks to
First Baptist Church
*for providing the Community
Concert Band & Choir and
Children's Choir with rehearsal
facilities!*



fbce.net

David Ltd.
HAIR & NAIL SALON

546-0163

DAVID W. MANUEL
Owner

204 S. Second
Eunice, LA 70535



Rotary

Eunice LA



KENDALL FONTENOT
Agent

StateFarm.com

1110 W. Laurel
Eunice, LA 70535

Phone:
337-546-6501

Jason M. Smith,
D.C.

337-457-1376

200 N 2nd St
Eunice LA

smith
FAMILY
Chiropractic & Wellness, LLC
www.Sm .net

ECCBC BASS SECTION

IT'S ALL ABOUT THAT BASS!!!

Welcome and Thanks for Supporting ECCBC!

Charles

Quillard

agency, inc.



1241 E. Laurel
457-5231

REX WHISTLER

Reginald John "Rex" Whistler (24 June 1905 – 18 July 1944) was a British artist who painted murals and society portraits and designed theatrical costumes. He was killed in action in Normandy in World War II.

Hailing from the age celebrated by steampunk artists, Whistler's optical illusion portraits give a glimpse into the mind of this exceptionally talented artist. Though he didn't live long, Whistler created an enormous amount of drawings, paintings and other creative projects such as set designs for school plays and illustrations for books. Rex Whistler's famous upside down faces have earned him a name among current art lovers, though when he created them they were little more than a passing fancy. He is more noted for works such as a wall mural that he painted for a restaurant in the Tate art gallery or his portraits of notable people of the time. Though they weren't particularly celebrated during his life, look him up to enjoy his collection of upside-down/right-side-up optical illusions.



*More than meets the eye!
Turn your program upside
down and look again!*

DATES OF OUR
2023 CHRISTMAS
CONCERT:

December 7 & 8
Thursday
& Friday



ECCBC
EUNICE COMMUNITY
CONCERT BAND & CHOIR



FALCON
Rice Mill, Inc

CROWLEY, LOUISIANA



Tim P. Fontenot, D.D.S.
Tim S. Fontenot, D.D.S.

General Dentistry

www.fontenotdds.com Tel: (337) 457-1342
149 N. 3rd St. Eunice, LA 70535 FAX: (337) 457-1354

L & L Sandblasting Inc

1498 Hwy 190 Eunice



SUPPORTING *Arts* PERFORMING

 **Coburn's**
Coburn Supply Company

DISTRIBUTORS OF

PLUMBING • HEATING • AIR CONDITIONING • ELECTRICAL
REFRIGERATION • MUNICIPAL • UTILITY • EQUIPMENT • SUPPLIES

COBY CLAVIER

BRANCH MANAGER

770 N CC DUSON

EUNICE, Louisiana 70735

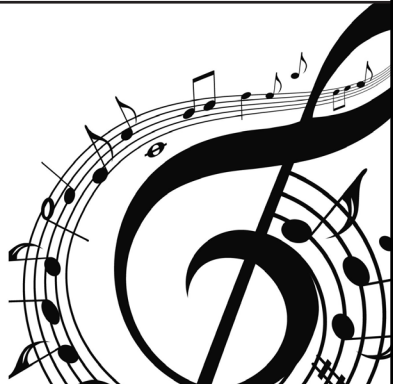
email: CCLAVIER@COBURNS.COM

www.coburns.com

PH: 337-457-7324

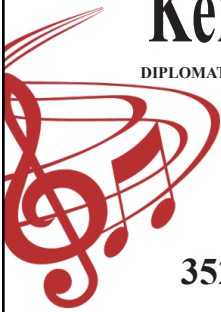
FX: 337-457-1217

WATTS: 800-832-8428



Kermen D. Beauchamp, M.D.

DIPLOMATE, AMERICAN BOARD OF PEDIATRICS CHILDREN AND ADOLESCENT MEDICINE



Office Hours: Monday-Friday (337) 457-2301
9AM - 12 Noon & 1PM - 5PM

3521 Hwy 190, Suite R, Eunice, LA 70535

RICE PALACE



CROWLEY, LOUISIANA

SUMMER WORD SEARCH

S B W K I S U N W M K W V
Y E K Q H X A E S K O V P
N A D A O B D N J I N A M
G C L C T B W M D T U C O
N H I P L Q N T H E F A R
I I C E C R E A M A R T M
W D R P O P S I C L E I C
S W I M N I E J T A M O A
B A O E T C G U L D M N M
R T A N E N S M H A U T P
I H C A E I O P S V S L I
S A Y E U C P O O L N O N
V R S E S S A L G N U S G

WORD BANK: HOT PLAY SUN
BBQ ICE CREAM POOL SUNGLASSES
BEACH JUMP POPSICLE SWIM
CAMPING KITE SAND SWING
FUN PICNIC SUMMER VACATION

JOKE CORNER

1. What do you call a boomerang that won't come back?
2. What does a cloud wear under his raincoat?
3. Two pickles fell out of a jar onto the floor. What did one say to the other?
4. What time is it when the clock strikes 13?
5. What do you call a pile of cats?

ANSWERS

1. A stick, 2. Thunderwear,
3. Dill with it, 4. Time to get a new clock, 5. A meowtain

CONCERT TITLES

1990	July	<i>A Family Concert of Patriotism and Americana</i>
	Dec	<i>A Caroling Christmas</i>
1991	July	<i>A Grand Ole Summer</i>
	Dec	<i>Coming Home for Christmas</i>
1992	July	<i>Spirit of the South</i>
	Dec	<i>A Very Merry Christmas</i>
1993	July	<i>Rhapsody</i>
	Dec	<i>A Storybook Christmas</i>
1994	July	<i>Centennial</i>
	Dec	<i>The Most Wonderful Time of the Year</i>
1995	July	<i>For America</i>
	Dec	<i>A Kid's Christmas</i>
1996	July	<i>Regards to Broadway</i>
	Dec	<i>Season of Dreams</i>
1997	July	<i>Back in the Good Old Days</i>
	Dec	<i>It's Christmas</i>
1998	July	<i>Razzle Dazzle</i>
	Dec	<i>Candy Canes and Christmas</i>
1999	July	<i>Swing</i>
	Dec	<i>One Magic Christmas</i>
2000	July	<i>Celebrate 2000</i>
	Dec	<i>Gloria!</i>
2001	July	<i>Dare to Dream</i>
	Dec	<i>Sing We Now of Christmas</i>
2002	July	<i>America: My Home</i>
	Dec	<i>Christmas Joy</i>
2003	July	<i>That's Entertainment</i>
	Dec	<i>Jubilate</i>
2004	July	<i>Summer Serenade</i>
	Dec	<i>Sing Noel</i>
2005	July	<i>Encore!</i>
	Dec	<i>A Christmas Festival</i>
2006	July	<i>Viva Musica!</i>
	Dec	<i>The Spirit of Christmas</i>
2007	July	<i>Star-Spangled Summer</i>
	Dec	<i>Fireside Christmas</i>
2008	July	<i>Rhythm of Life</i>
	Dec	<i>Celebrate Christmas</i>
2009	July	<i>Sounds Like Summer</i>
	Dec	<i>Laughing All the Way</i>
2010	July	<i>Thanks for the Memories</i>
	Dec	<i>Bells of Joy</i>
2011	July	<i>It's Showtime!</i>
	Dec	<i>Noel</i>
2012	July	<i>Let Me Entertain You!</i>
	Dec	<i>Good Tidings To All</i>
2013	July	<i>Let Freedom Ring</i>
	Dec	<i>Christmas Peace</i>
2014	July	<i>Sweet Sounds of Summer</i>
	Dec	<i>Merry Christmas Everyone</i>
2015	July	<i>25th Anniversary Concert</i>
	Dec	<i>On With the Snow!</i>
2016	July	<i>Summer Pops!</i>
	Dec	<i>A Jolly Jangling Christmas</i>
2017	July	<i>Then Sings My Soul</i>
	Dec	<i>Dashing Through the Snow</i>
2018	July	<i>Curtain Call</i>
	Dec	<i>Jing-A-Ling</i>
2019	July	<i>Zazz</i>
	Dec	<i>Christmas</i>
2020	July/Dec	NO CONCERTS
2021	July	<i>Be Our Guest</i>
	Dec	<i>Let the Bells Ring!</i>
2022	July	<i>It's All Right</i>
	Dec	<i>Season of Joy</i>
2023	July	<i>Summertime</i>



EUNICE MANOR

3859 US-190, Eunice, 337.457.2681

**GOT LOVE!
BUILDING RELATIONSHIPS!**

Nickie Toups
ADMINISTRATOR



300 West Park, Eunice
(337) 457-7334 JDBANK.COM



**TOMMY HILLMAN DDS
& KATHY TRACY MD**



PERFORMING ARTS OPPORTUNITIES

- ♦ **Bluey's Big Play**, Heymann Center, Lafayette – July 27
- ♦ **Philadelphia Boys Choir & Chorale**, Grand Opera House, Crowley – August 2
- ♦ **Lyle Lovett & His Large Band**, Orpheum Theater, New Orleans – August 17
- ♦ **Counting Crows**, Saenger Theater, New Orleans – August 18
- ♦ **Andy Gross Live!**, Grand Opera House, Crowley – August 19
- ♦ **Rick Springfield**, L'Auberge, Lake Charles – August 19
- ♦ **The Swamp Pop Legends Show**, Grand Opera House, Crowley – August 21
- ♦ **Frankie Valli and the Four Seasons**, Saenger Theater, New Orleans – August 25
- ♦ **Bluey's Big Play**, Saenger Theater, New Orleans – August 26-27
- ♦ **Lauren Daigle, The Kaleidoscope Tour**, Raising Cane's River Center, Baton Rouge – September 8
- ♦ **The Righteous Brothers**, Golden Nugget, Lake Charles – September 29
- ♦ **Craig Morgan**, Lutcher Theater, Orange, TX – October 15
- ♦ **Symphony In The Sky**, Acadiana Symphony, On Top of Vermilion St. Parking Garage, Lafayette – October 24
- ♦ **Cinema & The Symphony**, Acadiana Symphony, Heymann Center, Lafayette – October 26
- ♦ **The Rocky Horror Picture Show**, Mahalia Jackson Theater, New Orleans – October 28
- ♦ **MJ The Musical**, Saenger Theater, New Orleans – November 1-12
- ♦ **A Tale of Two Times**, Acadiana Symphony, St. John's Cathedral, Lafayette – November 10
- ♦ **Best of Louisiana Blues**, Grand Opera House, Crowley – November 11
- ♦ **Derek Hough, Symphony of Dance**, Saenger Theater, New Orleans – November 16
- ♦ **ECCBC Christmas Concert**, First Baptist Church, Eunice – December 7-8
- ♦ **Marc Broussard**, Grand Opera House, Crowley – December 15
- ♦ **Wicked**, Saenger Theater, New Orleans – Nov 29-Dec 17
- ♦ **Wheel of Fortune LIVE!**, Rasing Cane's River Center, Baton Rouge – Dec 22
- ♦ **Nutcracker**, Saenger Theater, New Orleans – Dec 30

2024

- ♦ **My Fair Lady**, Saenger Theater, New Orleans – January 9-14
- ♦ **Les Miserables**, Saenger Theater, New Orleans – Jan 30-Feb 4
- ♦ **Pretty Woman The Musical**, Lutcher Theater, Orange, TX – February 2-3
- ♦ **Little Women the Broadway Musical**, Lutcher Theater, Orange, TX – February 16
- ♦ **Ain't Too Proud: The Life & Times of the Temptations**, Saenger Theater, New Orleans – Feb 27-Mar 3
- ♦ **Come From Away**, Lutcher Theater, Orange, TX – March 14
- ♦ **Mad Hatter's Luncheon & Style Show**, Acadiana Symphony, Lafayette – March 22
- ♦ **Annie**, Lutcher Theater, Orange, TX – April 4
- ♦ **Annie**, Saenger Theater, New Orleans – April 5-7
- ♦ **Chicago**, Lutcher Theater, Orange, TX – May 9
- ♦ **Mrs. Doubtfire, The New Musical Comedy**, Saenger Theater, New Orleans – May 14-19
- ♦ **Clue, A New Comedy**, Saenger Theater, New Orleans – June 18-23

ST. LANDRY PARISH TOURIST COMMISSION cajuntravel.com

EUNICE PLAYERS' THEATRE [Eunice Players' Theatre on Facebook](#)

ACADIANA SYMPHONY ORCHESTRA acadianasymphony.org

GRAND OPERA HOUSE thegrandoperahouse.org

ACADIANA CENTER FOR THE ARTS acadianacenterforthearts.org

RAISING CANE'S RIVER CENTER raisingcanesrivercenter.com

LAFAYETTE BROADWAY SERIES lafayettebroadway.com

DRUM CORPS INTERNATIONAL dci.org

SAENGER THEATRE saengernola.com

HEYMANN CENTER heymanncenter.com

MAHALIA JACKSON THEATER mahaliajacksontheater.com

CAJUNDOME cajundome.com

LUTCHER THEATER lutcher.org

Vige, Tujague & Noel



Certified
Public
Accountants

151 N. 2nd Street
Eunice, LA
457-9324

Chuck & Lise Richard



PICOU'S
PHONE 457-2218

DRUG STORE
260 N. 2nd. St.
EUNICE, LA 70535

BECKY & BRIAN
TANNER
BRAVO!

**EUNICE
PLAYERS'
THEATRE**



**ONCE UPON A
FAIRY TALE**

**PERFORMANCES
JULY 28-30 and
AUGUST 3-6**

121 S 2ND ST, EUNICE 337-550-4727



**DR. & MRS.
REGINALD
SEGAR**



Supported by our
**Catholic
Community**
St. Anthony
St. Mathilda
St. Thomas More

**Darnall, Sikes
& Frederick**

*A Corporation
of Certified
Public Accountants*



ACADIAN
MEDICAL CENTER

MIND-BLOWING GEOGRAPHY FACTS

Vulcan Point is a lake within an island on a lake within an island. In the Philippines, you'll find Vulcan Point, an island within Main Crater Lake. Main Crater Lake is located on Volcano Island. Volcano Island is located in Lake Taal. Lake Taal is located on the island of Luzon. And there you have a lake within an island on a lake within an island.

Iceland Is Growing 5 Centimeters Per Year -- Iceland, divided by the North American and European tectonic plates, is growing by nearly 5 centimeters per year as the plates grow wider apart.

Los Angeles Is East of Reno, Nevada -- Sure, California is west of Nevada, but check the map closely and you'll see the City of Angels is actually 86 miles east of Reno. This is particularly mind-boggling when you consider Nevada is close to 300 miles from the Pacific Ocean.

Los Angeles and San Francisco Will Be Neighboring Cities

The San Andreas fault in California is "consuming" nearly 2 inches of land each year. If humans are still around in 15 million years, those living in Los Angeles and San Francisco can be neighbors.

Kentucky Has More Caves Than Any Other Place on Earth -- Kentucky's cave system, Mammoth Cave, is nearly 400 miles in length — and that's just what's been explored! Scientists think there are 200 more miles of unexplored caves, making the cave system the largest on Earth.

You can visit portions of the caves at Mammoth Cave National Park.



LIKE us on Facebook! www.facebook.com/eccbc

THE
Organization
Established in 1990

The Eunice Community Concert Band & Choir, Inc. was organized in February of 1990 with the intent to promote vocal and instrumental music in Eunice and the surrounding area. The organization is open to anyone who enjoys and appreciates vocal and instrumental music. There are no auditions or dues. We depend solely on the contributions of merchants and individuals and provide two concerts each year, July and December. The organization is operated by volunteers and pays no salaries.

In the last thirty-three years the band and choir has produced sixty-four concerts. Also during these years we have provided music for: Eunice July Fourth celebrations, LSUE commencement exercises, city inaugurations, Eunice Centennial Celebration (performing an original work by Dr. Quincy Hilliard, ASCAP, commissioned by the ECCBC for the celebration), LSUE community fun days, Eunice Christmas celebrations, and presented concerts in Crowley, Oakdale, Ville Platte, Lafayette and New Iberia. Several members of the community choir participated in a concert at Carnegie Hall in New York City in 1994. Joining singers from across the country, the group was

directed by Dr. James Haygood and world-renowned choral conductor John Rutter.

The ECCBC has enjoyed much success since 1990. Membership in the organization has grown to over 180. For any given concert there may be as few as forty or as many as eighty of those members performing on stage. For many, the rehearsal season provides a wholesome social activity and an opportunity to meet new friends.

The organization adds to the uniqueness of this city. *Very few* American cities the size of Eunice have a musical organization such as the ECCBC. We are proud of all that we have done and look forward to serving the Eunice area with quality, family programs for many years to come. ☚

CONTACT US:

ECCBC / 351 W Maple Ave

Eunice, Louisiana 70535

PH: 337.457.1776

Email: eccbc1990@gmail.com

ECCBC.org





OUR LOGO

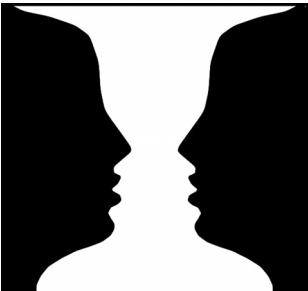
In 1992, the ECCBC commissioned the University of Louisiana at Lafayette art department to create a logo for the organization. After a meeting with Dwight Jodon, Pat Dossman and the department, approximately fifteen art students set about the task of designing an appropriate ensignia.

Several of the proposed designs centered around the organization's acronym, ECCBC. However, the winning design was a simple graphic. It symbolizes the semicircle staging used by musical ensembles globally. The image is one *in motion* as the conductor's baton sweeps across the design. This particular logo was selected because of its simplicity and because the ECCBC is determined to move forward into the future with the mission of sharing the gift of music with the residents of Acadiana.

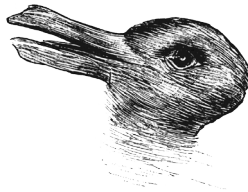
We are proud to celebrate our thirty-third birthday this year, and are excited about our future. It is our desire that this logo would be recognized as *a mark of excellence!*

 <p>Don & Debbie Leonards</p>	 <p>620 West Maple Ave Eunice 457-3007</p>
  <p><i>New Owners</i> Jason & Angie Bellard 360 E. Laurel • Eunice, LA 457-4459</p>	<p>ZEB STEARNS, M.D.</p> <p>Family Practice Hours: M - F / 8:00 - 5:00</p>  <p>450 Moosa Blvd., Ste. A Eunice, LA 70535 Phone: (337) 546-6646 Fax: (337) 546-0111</p>

WHAT DO YOU SEE?



Vase or Faces?



Duck or Rabbit?



Young Woman, Old Woman?

Children's Choir

Featured in Rockin' Robin

Connie C. Beaugh, *Accompanist*

Jan Carboni, *Assistant*

Molly Bourque

Molly Fontenot

Annelise Kate Fruge

Emily Claire Fruge

Luke Wesley Fruge



Madelyn Marie Fruge

Mary Grace Fruge

Hailey Mouton

Reid Richard

SERVICE Above Self

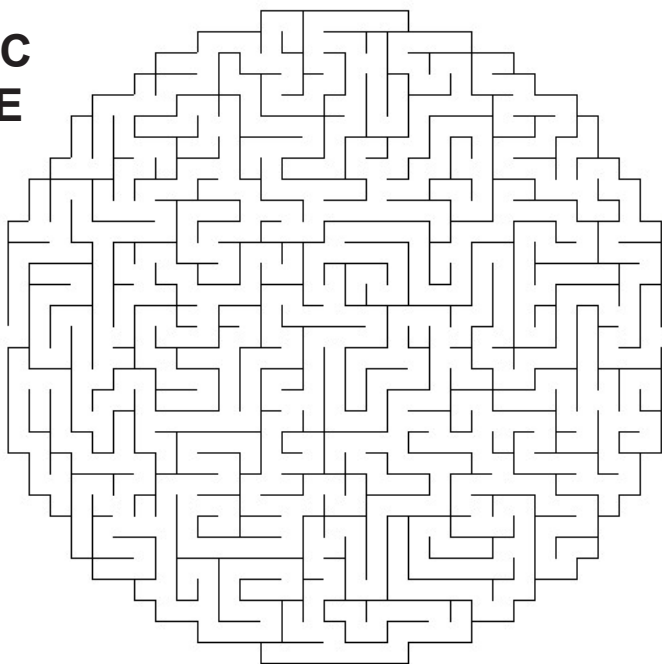
CROWLEY
ROTARY
CLUB



Rotary



MUSIC
MAZE



finish

Thank You

*We kindly
thank the
following
for their
assistance
with tonight's
production:*

First Baptist
Church Family
Van Reed
Troy Breaux

Jan Carboni
Tammy Stanford
Paul Fowler
Rocky Ogea
Katie & Brad
Richard
Berna Mire

Keith Jodon
Hanson Jodon
Robert Gaspard
RJ Gaspard
Savannah Gaspard
Lezlee Gaspard
Our Advertisers

REHABXCEL **Physical Therapy & Sports Medicine**

Locally Owned and Operated

Michael Driggs, DPT & Lee Miller, DPT
441 Moosa Blvd (337) 457-8164
www.rehabxcelpt.com

Patricia G. Dossman, CLU, LUTCF, CLTC
Dwight R. Jodon, CLU, LUTCF, CLTC
Agents
New York Life Insurance Company

337.457.1776



Ardoin's FUNERAL HOMES

1301 W. Laurel ~ Eunice, LA 70535

www.ardoinfuneralhomes.com

Eunice ~ Ville Platte ~ Mamou ~ Basile ~ Iota

Serving Families Since 1938

337-457-3371

Tonight's program is made possible by the
generosity of supporters such as

JACQUE & BECKY PUCHEU



Jacque B. Pucheu, Jr.

— Attorney at Law, LLC —

jacque.pucheu@pprlaw.com

106 Park Avenue, Eunice, LA, 337.457.9075



With our thanks and gratitude,

EUNICE COMMUNITY CONCERT BAND & CHOIR



Superior Water

We Take The Worry Out Of Water.

RainSoft®
Water Treatment Systems



337-466-3833

SUPERIORWATERLA.com



"SERVING THE COMMUNITY FOR OVER 100 YEARS"

101 E. MAPLE AVE. EUNICE 337-457-3384

HEBERT MEDICAL GROUP, APMC

3521 Hwy. 190, Ste. S - Eunice, LA 70535

Charice M. Hebert, M.D.
Richard L. Hebert, II, M.D.



DR. CRAIG M.
BRAMMER,

OPTOMETRIST



LA'S #1
Tobacco & Liquor Discount Outlet

TOBACCO PLUS DISCOUNT OUTLET



Monty N. Heinen

M.D.F.A.C.O.G.

Obstetrics & Gynecology



Mon. - Wed. 8:00-5:00

Thurs. 8:00-4:00

Friday 9:00-12:00

3448 Hwy. 190
Eunice, Louisiana 70535

Ph. 337-546-6237
Fax 337-550-7257



FRUGÉ LUMBER COMPANY
GENERAL CONTRACTORS

601 north eight street • Eunice, Louisiana 70535
phone (337) 457-3077

fax (337) 457-4129

The Flower House

Fresh & Silk Floral Arrangements-Plants
Gift Baskets-Balloon Bouquets-Unique Gift Items



Ethel Meche
(337) 546-0257

450 N. 2nd Street
Eunice, La. 70535

SMITH *True Value.*
HARDWARE

300 E Laurel 337-457-3113
Eunice Louisiana

Harry A. Smith, Jr. & Claire Smith
Owners



WASHINGTON STATE BANK

WSBankla.com

BSB BASILE STATE BANK
Member FDIC

MOBILE CHECK DEPOSIT

Now available from
Basile State Bank!

Available for Apple & Android devices!

Visit our Website: www.basilebank.com

Frugé Family
CHIROPRACTIC

337-466-7470



Augie's maple ave. PHARMACY & *Gifts*

Compound Prescription Specialist
Pharmacist Tina Marcantel

Clay M. Duos, D.D.S.
GENERAL DENTISTRY

481 MOOSA BLVD.
EUNICE, LA 70535
TELEPHONE (337) 457-9035
www.drduos.com

Olivia Ardoin, R.D.H.
Cindy Reviere, R.D.H.
DENTAL HYGIENISTS

24 HOUR NOTICE NECESSARY FOR CANCELLATION

Eunice

ABOUT

Founded: 1894

Prairie Cajun Capital of LA

Mayor: Scott A. Fontenot

2020 Population: 9,310

Number of Households

2006-2010: 3,522

Land Area: 5.13 square miles

Parishes: St. Landry & Acadia

Source: US Census Bureau



THINGS TO DO

Eunice Depot Museum - South C.C. Duson

One block east of the Liberty Center, closed Mondays

Jean Lafitte Prairie Acadian Culture Center - 250 West Park Avenue,
TEMPORARILY CLOSED, National Park Service, U.S. Department of the Interior

The Liberty Center for the Performing Arts - Est. 1924, Corner of
Park Ave. & Second Streets, host to a wide variety of civic and cultural functions
throughout the year [Currently closed for renovation]

Savoy Music Center Jam Session - Saturdays, 9:30-11:30am, 4413 Hwy 190

Cajun Music Hall of Fame and Museum - South C.C. Duson Drive, a block
east of the Liberty Center, open Tuesday-Saturday

Eunice Mardi Gras Festival - February 9-13, 2024

World Championship Crawfish Etouffee Cookoff - March Annually

WEB: www.etouffecookoff.org

Fourth of July Celebration - Fireworks at Eunice Recreation Center, July 4,
annually

CITY OF EUNICE

Mayor Scott A. Fontenot

Marion "Nootsie" Sattler,

Councilman at Large

COUNCIL MEMBERS

Connie Thibodeaux

Chad Andrepont

Germaine Simpson

Randy Reed

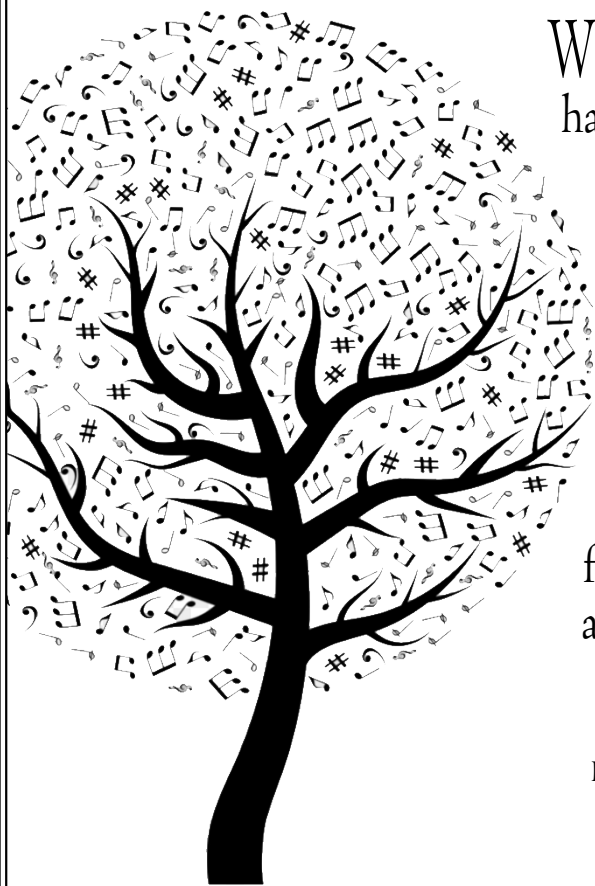
A wonderful place to live.
A musical place to visit.

Tonight's program is made possible by the
generosity of supporters such as

KENNETH PITRE

We live mindfully by
harvesting evocative
scenes to pay
attention to
including the
mountains
and oceans,
flowers and
trees, love and
friendship, music
and literature, art
and poetry.

KILROY J. OLDSTER



With our thanks and gratitude,

EUNICE COMMUNITY CONCERT BAND & CHOIR

Lakeview PARK & BEACH

Full Hook-Up RV Sites
Fishing Lake
Play Grounds
Cottages
Beach
Live Music
And Much More!

Eunice, LA • www.lvpark.com • 337-457-2881





WoodmenLifeSM

Life Insurance Society, Maple Lodge 243
Eunice, LA

Life Insurance • Annuities • Investments

Charles Stringer Phone: 337-344-4369

Recruiting Sales Manager

Music
is the voice of the soul



Iced Coffee Ice Cream Float

Give root beer a break and try this frozen dessert! Inspired by the Italian treat, affogato (hot espresso poured over gelato) and Ree Drummond's absolute favorite iced coffee recipe, this iced coffee ice cream float is a delicious jolt of energy! With an easy, no-churn ice cream and cold-brewed coffee base, this float is the ultimate indulgence.

Directions

1-Line a 9-by-5-inch loaf pan with plastic wrap.

2-Using a hand mixer and a large bowl or a stand mixer fitted with the whisk attachment, beat the cream, vanilla, and salt until medium peaks form. Add the sweetened condensed milk to the cream and beat until stiff peaks form. Spread the mixture into the prepared loaf pan. Cover with plastic wrap and freeze until firm, 4 to 6 hours.

3-Place 1 scoop of the condensed milk ice cream into a tall glass. Carefully pour the iced coffee over the ice cream, leaving room at the top. Add another scoop or two of ice cream. Dust with cocoa powder. Enjoy immediately.

Ingredients

1 1/2 c. heavy whipping cream, chilled
1 tsp. vanilla extract
Pinch kosher salt
1 14-ounce can sweetened condensed milk
Perfect Iced Coffee, chilled
Cocoa powder, to serve



CLECO

Energizing Your Tomorrow

Supporting the Arts!



EUNICE COMMUNITY CONCERT BAND & CHOIR