




**GREENWOOD**  
HIRE



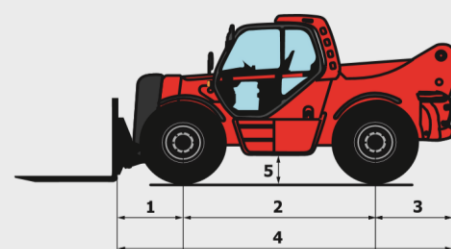
**MHT 10180**



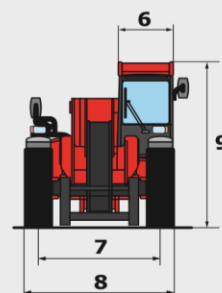
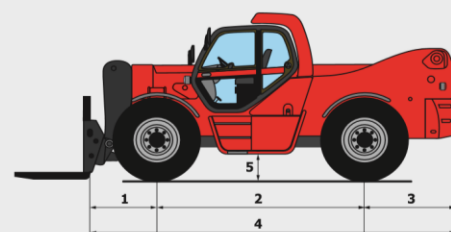
# MHT 10180

	MHT 10120	MHT 10180	MHT 10225
<b>Lifting</b>			
Max. capacity 600 mm CDG	12000 kg	18000 kg	
Max. capacity 900 mm CDG			22500 kg
Max. capacity 1200 mm CDG	8000 kg	14000 kg	18500 kg
Max. lifting height	9.62 m		9.70 m
<b>Time unladen (in seconds)</b>			
Lifting	13.0 secs	25.0 secs	32.0 secs
Lowering	9.0 secs	17.0 secs	18.5 secs
Extension	14.5 secs	14.0 secs	14.0 secs
Retraction	9 secs	11.0 secs	11.0 secs
<b>Tyres</b>	17.5 - 25	445/95 R25 XLB	18 R25 XZM2
<b>Braking</b>			
Service brake	oil immersed multi-disc braking on front/rear axles		
Parking brake	automatic negative handbrake		
<b>Engine</b>			
	MERCEDES - STAGE 3A		
Type	OM 904		
Cubic capacity	4250 cm <sup>3</sup>		
Power	175 HP / 129 kW		
Max. torque	675 Nm - 1200 rpm		
Injection	direct		
Cooling	water		
Laden drawbar pull	11300 daN	15500 daN	17400 daN
Gradient (laden/unladen)	85% / 37%	68% / 33%	72% / 34%
<b>Transmission</b>			
	hydrostatic with automatic power regulation		
	4 wheel drive		
Reversing shift	electromagnetic		
Number of gears (forward/reverse)	2/2		
Max. travel speed (may vary according to applicable regulations)	25 km/h		
Axle	DANA	OMCI	
Steering mode	4 wheel steer 3 steering modes		
<b>Controls</b>			
	JSM® Joystick multi - function load limiter cut off system - EN15000 Norm		
<b>Hydraulics</b>			
Pump Load Sensing	165 l/min - 350 bar	170 l/min - 350 bar	
<b>Capacities</b>			
Hydraulic oil	290 l		
Fuel	200 l		
<b>Unladen weight (with forks)</b>	17000 kg	24080 kg	29800 kg
<b>Dimensions</b>			
1. Front wheel centre to carriage	1.22 m	1.33 m	1.35 m
2. Wheelbase	3.30 m	3.65 m	3.65 m
3. Rear wheel centre to rear face	1.42 m	1.62 m	1.86 m
4. Overall length to carriage	5.95 m	6.60 m	6.86 m
5. Ground clearance	0.44 m		0.47 m
6. Overall width of cab	0.90 m		
7. Inside tyre width	1.96 m	2.07 m	
8. Overall width	2.50 m		2.66 m
9. Overall height	2.90 m	2.93 m	2.96 m
Standard forks (length x width x thickness)	1800 x 200 x 70 mm	1500 x 200 x 80 mm	1800 x 250 x 100 mm
Turning radius (over tyres)	4.53 m	5.68 m	6.05 m
Frame levelling	+/- 10°		+/- 5°
Carriage rotation (crowd/dump)	20°/115°	12°/105°	
<b>Noise and vibration</b>			
Noise at driving position (LpA)	79.2 dB		

MHT 10120



MHT 10180 - MHT 10225

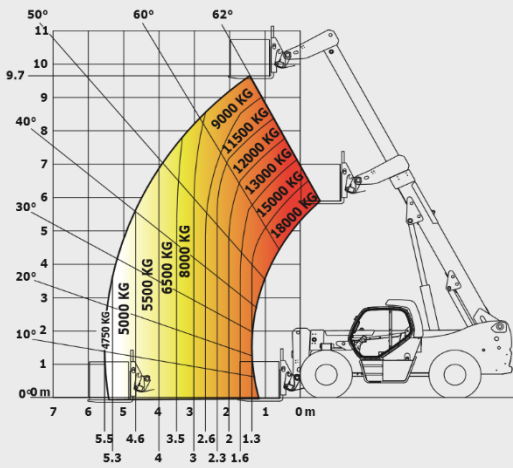


# MHT 10180

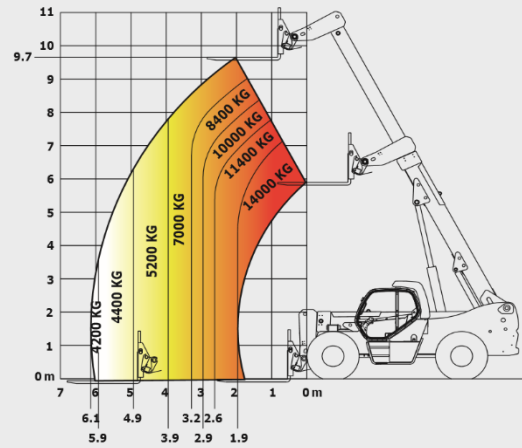
## Rough terrain load chart

standard EN1459 B

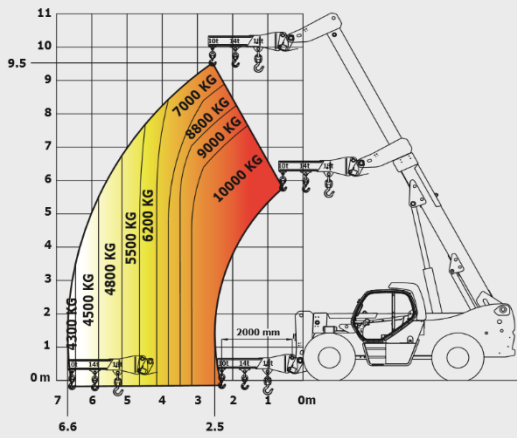
### 600 mm CDG Forks



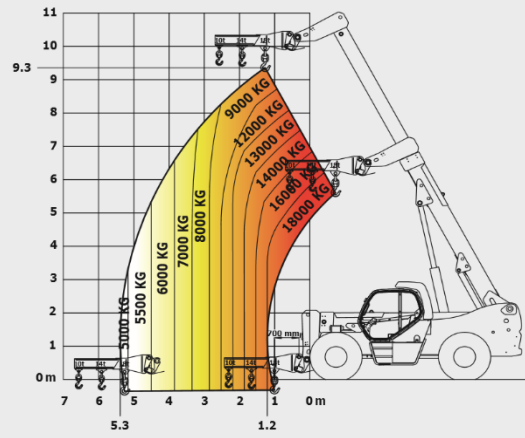
### 1200 mm CDG Forks



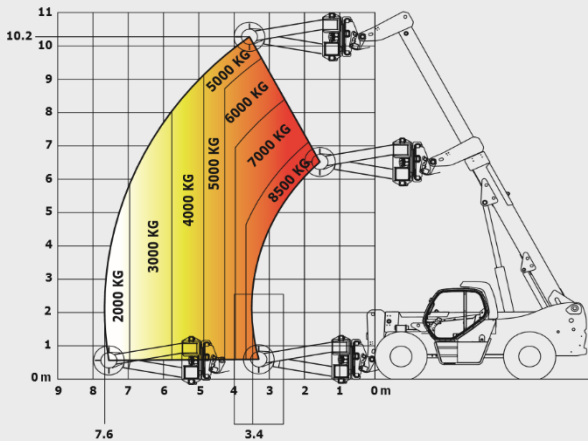
### Crane jib 10 T hook



### Crane jib 18 T hook



### TH 63 Tyre clamp



### Winch 18 T

