



SEXUAL HEALTH 2

URINE COLLECTION

Our Sexual Health 2 At-Home Test checks for the sexually transmitted infections Chlamydia and Gonorrhea. Patients have the ability to collect the sample specimen at home and send the sample to be processed via our very own PHASE Lab.

A Complimentary telehealth consult is included with the cost of the test.



TEST COMPONENTS



Instructions for use



Urine collection cup



Transfer pipette



Specimen tube



Registration card / Specimen tube label



Specimen bag



Return envelope

WHAT'S MEASURED?

This test measures the presence of Chlamydia and/or Gonorrhea infection(s).

HOW IT WORKS

- Collect sample
- Ship sample
- Receive results
- Utilize complimentary telehealth consult
- Receive treatment

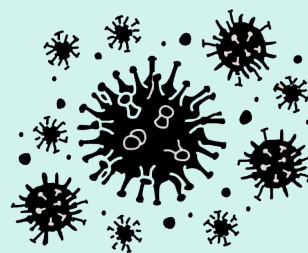
Value of INDICAID heat



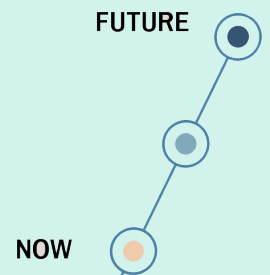
Our At-Home Tests are proudly made in the USA. These high quality tests ensure ease of use with plain language and intuitive packaging.



Samples are sent to our California based CLIA certified laboratory, PHASE Lab, where a dedicated team of wxperts analyze samples with the utmost care.



The prevalence of STIs in the USA is a major issue affecting millions. In 2021, chlamydia and gonorrhea continued to increase with over 1.6 million cases of Chlamydia and over 700,000 cases of Gonorrhea..



This is only the beginning. Two new tests will be become available per quarter for a range of conditions from respiratory and sexual health to gastric and mental health.

TIMING

Available Q3 2023



About INDICAID health: Our Founding

As part of the innovative life sciences company, PHASE Scientific, INDICAID health is driven to pioneer a better health future for everyone. Started by scientists from a top university in Los Angeles, California. Since its founding in 2015, PHASE Scientific has become known globally as a trusted medical-diagnostics success partner. Over the past several years, people have become more comfortable with taking health tests at home and using digital health services to get help. So, we developed INDICAID health to offer everyday people easy, accurate at-home health tests coupled with our own government-approved laboratory for high quality test sample processing and online access to board-certified doctors.

Using our California-based CLIA-certified laboratory, PHASE Lab, our dedicated team of experts analyzes your samples with the utmost care, and our trained clinical scientists review the results for accuracy.

We understand the importance of making testing easier for our patients. We are happy to provide our patients with the advantages of hassle-free testing from the convenience of their own homes.

Let's talk about how we can work together to bring a better back-to health solution to your customers and patients.



Serving the World with Integrity and Honesty

For all inquires please contact us:

JLB Sourcing -

www.jlbsourcing.com | Sales@jlbsourcing.com | (703) 349-3003

20820 Century Corner Drive, Ashburn, Virginia 20147, United States

*Thank
you!*