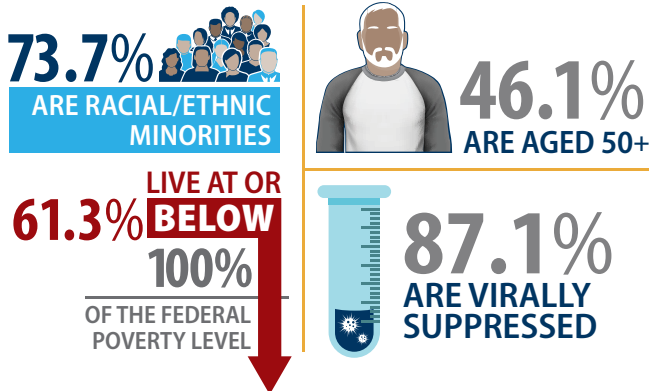


The Health Resources and Services Administration's Ryan White HIV/AIDS Program (RWHAP) provides a comprehensive system of HIV primary medical care, medications, and essential support services for low-income people with HIV. More than half the people with diagnosed HIV in the United States—approximately 519,000 people in 2018—receive services through RWHAP each year. The RWHAP funds grants to states, cities/counties, and local community-based organizations to provide care and treatment services to people with HIV to improve health outcomes and reduce HIV transmission among hard-to-reach populations.



Ryan White HIV/AIDS Program Fast Facts: Program Clients



More details about RWHAP clients are outlined below:

- **The majority of clients served by RWHAP are low income.** The data show that 61.3 percent of clients are living at or below 100 percent of the federal poverty level (FPL), and 89.8 percent of RWHAP clients live at or below 250 percent of the FPL. Nearly all clients served have an income at or below 400 percent of the FPL.
- **The RWHAP serves a diverse population.** Nearly three-quarters of clients are from racial/ethnic minority populations, with 47.1 percent of clients identifying as black/African American and 23.2 percent identifying as Hispanic/Latino.
- **The majority of RWHAP clients are male.** Among all clients served by RWHAP, 71.6 percent are male, 26.5 percent are female, and 1.9 percent are transgender.
- **The RWHAP client population is aging.** People aged 50 years and older account for 46.1 percent of all RWHAP clients.

Medical care and treatment improve health outcomes and decrease the risk of HIV transmission. People with HIV who take HIV medication

daily as prescribed and reach and maintain an undetectable viral load have effectively no risk of sexually transmitting the virus to an HIV-negative partner. Among RWHAP clients receiving HIV medical care in 2018, 87.1 percent are virally suppressed,* which is an increase from the 69.5 percent viral suppression observed in 2010.

RWHAP delivers a broad range of services to ensure people with HIV are able to access and remain in care. The most frequently used services are-

- Outpatient ambulatory health services
- Medical case management, including treatment adherence services
- Non-medical case management services
- Oral health care
- Medical transportation
- Mental health services
- Food bank/home-delivered meals
- Health education/risk reduction
- Referral for health care and supportive services
- Health insurance premium and cost sharing assistance for low-income individuals

In addition, the RWHAP Part B AIDS Drug Assistance Program provides approximately 268,000 clients with HIV-related medications and/or health care coverage assistance.

* Viral suppression is defined as a viral load result of less than 200 copies/mL at most recent test, among people with HIV who had at least one outpatient ambulatory health services visit and one viral load test during the measurement year.