



TopSolid
Virtual

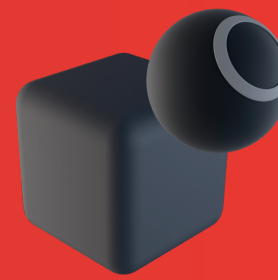
TopSolid
INTEGRATED
DIGITAL
FACTORY



+

IMPORT

your files from TopSolid or from the CAD tool of your choice



EDIT

your scene by adding realistic materials, stickers, environments and more



INTEGRATED INTO YOUR TOPSOLID ENVIRONMENT

3D visualization has never been easier!
TopSolid'Virtual is perfectly integrated into the TopSolid environment and allows your collaborators to hold validation meetings for 3D files. No 3D expertise is required.



REALISM AT YOUR FINGERTIPS

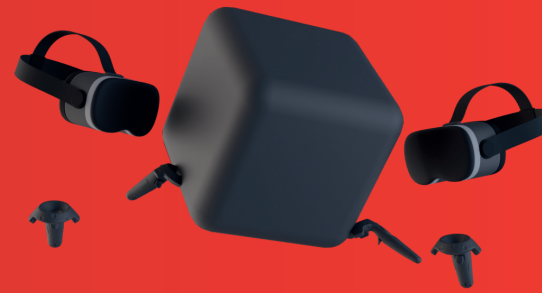
TopSolid'Virtual is based on the most advanced real-time rendering engine on the market. It offers ultra-realistic visualization with no computing time.

Thanks to the library of materials, environments and 3D objects, you can turn your CAD file into a realistic scene with just a few clicks!



VISUALIZE

your scenes and objects at their real size in virtual reality



COLLABORATE

with your colleagues to validate your projects across different sites



VALIDATION AT 1:1 SCALE

Instantly immerse yourself in your full-scale 3D project with the "Virtual Reality" feature. You can validate proportions and shapes without the time and costs of physical prototyping.

Add kinematic constraints to interact with your objects just as you would in a real environment.



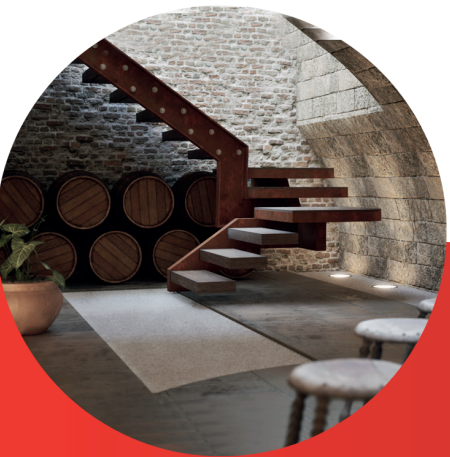
UNIQUE PRESENTATIONS

Thanks to the "slide" mode, you can create interactive presentations to facilitate group validation of your projects throughout the different design phases. Each user can interact with the model, add measurements, and make annotations.

Boost your sales with unique sales presentations and create product videos in minutes!

A VARIETY OF USES

Make an appointment with one of our experts to help you determine your return on investment!



SPACE
AND DESIGN REVIEW



FULL-SCALE
ENGINEERING VALIDATION



TRAINING/EQUIPMENT
ORIENTATION



MARKETING VIDEOS/
SALES PRESENTATIONS