

**Cast Terminal Boxes
&
Electric Motor Cooling Fans
Catalog and Price List**

TERMINAL BOXES



Cast Aluminum Terminal Boxes

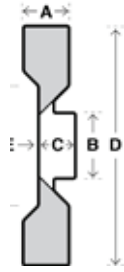
Frame Size	Part No.	A	B	C	D	E	F	G	Conduit Opening	Cubic Inches	List Price
184T - 286T	TBA1	6	6 7/8	4	5 1/8	1 3/4	2 1/4	3 3/8	1" NPT	81	\$149.00
286T - 365T	TBA2	9 3/4	8 1/4	5 5/8	6 1/4	2 1/4	2 3/4	5	2" NPT	242	\$306.00
365T - 445T	TBA3	12 1/4	11 1/4	7 3/4	9	2 3/4	3 1/4	8	2 1/2" NPT	657	\$476.00
445T & larger	TBA4	14 3/4	13 1/4	8 1/2	10 5/8	3 1/2	4	10	3" NPT	995	\$773.00

Cast Iron Terminal Boxes

Frame Size	Part No.	A	B	C	D	E	F	G	Conduit Opening	Cubic Inches	List Price
184T - 286T	TBI1	6	6 7/8	4	5 1/8	1 3/4	2 1/4	3 3/8	1" NPT	81	\$313.00
286T - 365T	TBI2	9 3/4	8 1/4	5 5/8	6 1/4	2 1/4	2 3/4	5	2" NPT	242	\$457.00
365T - 445T	TBI3	12 1/4	11 1/4	7 3/4	9	2 3/4	3 1/4	8	2 1/2" NPT	657	\$574.00
445T & larger	TBI4	14 3/4	13 1/4	8 1/2	10 5/8	3 1/2	4	10	3" NPT	995	\$804.00

BLANK BORE FANS

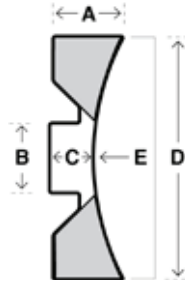
Style 1



Part No.	Overall Diameter (D)	No. of Blades	Blade Width (A)	Hub Diameter (B)	Hub Thickness (C)	Hub Recess (E)	List Price
1-52	5 1/4	12	13/16	2	5/8	1/4	\$ 44.00
1-55	5 5/8	12	1	2	5/8	1/4	\$ 44.00
1-6	6	12	1	2	5/8	1/4	\$ 47.00
1-63	6 3/8	12	1	2	5/8	1/4	\$ 47.00
1-66	6 3/4	12	1	2	1 1/16	1/4	\$ 50.00
1-67	6 7/8	12	1 1/4	2 1/2	3/4	1/2	\$ 50.00
1-7	7	12	1 3/16	2	5/8	1/4	\$ 50.00
1-72	7 1/4	12	1 7/16	2 1/2	1 1/8	7/16	\$ 60.00
1-74	7 1/2	12	1 1/8	2	1 1/16	1/4	\$ 60.00
1-75	7 5/8	12	1 5/8	2 1/4	7/8	3/8	\$ 60.00
1-8	8	8	1 1/4	2 1/2	1	3/8	\$ 67.00
1-84	8 1/2	12	1 1/4	2 1/8	1 5/16	5/8	\$ 67.00
1-86	8 3/4	12	1 1/12	2 1/2	1 3/8	3/16	\$ 80.00
1-9	9	12	1 1/2	2 3/4	1 1/8	3/8	\$ 88.00
1-93	9 3/8	8	1 1/2	2 1/2	1 1/4	3/8	\$108.00
1-94	9 1/2	12	1 3/8	3 1/4	1 1/8	7/16	\$110.00
1-10	10	12	1 1/2	3 1/2	1 3/8	7/16	\$120.00
1-104	10 1/2	12	1 3/8	3 1/4	1 1/8	7/16	\$134.00
1-11	11	12	2 1/8	4	1 3/8	5/8	\$175.00
1-113	11 3/8	12	1 3/4	3 1/8	1	1/2	\$175.00
1-116	11 3/4	12	1 3/4	3 3/4	1 1/4	1/2	\$213.00
1-124	12 1/2	12	1 7/8	4	1 1/4	9/16	\$229.00
1-125	12 5/8	12	2 1/2	4 1/2	1 3/8	1	\$244.00
1-13	13	12	2	4	1 3/8	1/2	\$294.00
1-132	13 1/4	12	2	4	1 3/8	3/4	\$294.00
1-14	14	12	2 1/8	4	1 9/16	9/16	\$319.00
1-147	14 7/8	12	2 1/2	4 5/8	1 5/8	15/16	\$319.00
1-16	16	12	2 1/2	5	1 3/4	1 3/16	\$333.00
1-17	17	12	2 1/2	5	1 3/4	1 1/4	\$333.00
1-177	17 7/8	15	2 5/8	5	1 3/4	1 1/4	\$345.00

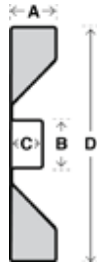
BLANK BORE FANS

Style 2



Part No.	Overall Diameter (D)	No. of Blades	Blade Width (A)	Hub Diameter (B)	Hub Thickness (C)	Hub Recess (E)	List Price
2-94	9 1/2	9	2	3 1/8	1 5/16	1 1/8	\$ 87.50
2-115	11 5/8	10	2 1/2	3 3/4	1 5/16	1 3/8	\$151.50
2-145	14 5/8	12	2 1/2	4 1/4	1 5/8	1 7/16	\$254.50
2-162	16 1/4	12	3	4 3/4	1 3/4	1 5/8	\$294.00
2-18	18	12	3	5	1 3/4	1 3/4	\$333.50

Style 3



Part No.	Overall Diameter (D)	No. of Blades	Blade Width (A)	Hub Diameter (B)	Hub Thickness (C)	Hub Recess (E)	List Price
3-54	5 1/2	12	5/8	1 7/8	5/8	0	\$ 58.00
3-72	7 1/4	12	1 1/2	2	1	0	\$ 60.00
3-8	8	12	1	2 1/8	13/16	0	\$ 60.00
3-82	8 1/4	12	1	2 1/8	1	0	\$ 60.00
3-83	8 3/8	12	1 1/2	2 1/8	13/16	0	\$ 80.00
3-85	8 5/8	12	1 1/2	2 1/8	13/16	0	\$ 80.00
3-86	8 3/4	12	1 1/2	2 1/8	13/16	0	\$ 80.00
3-94	9 1/2	12	2	3 1/8	1 5/16	0	\$105.00
3-11	11	12	1 3/4	4	1 3/8	0	\$175.00
3-115	11 5/8	12	2 1/2	3 3/4	1 5/16	0	\$175.00
3-124	12 1/2	10	2 1/2	4 1/4	1 5/8	0	\$302.00
3-145	14 5/8	12	2 1/2	4 1/4	1 5/8	0	\$309.00
3-162	16 1/4	12	3	4 3/4	1 3/4	0	\$352.00
3-174	17 1/2	12	3 1/4	5	2 1/3	0	\$417.00
3-18	18	18	3	5	1 3/4	0	\$417.00
3-206	20 3/4	16	3 1/2	5 3/4	2 1/8	0	\$553.00

BLANK BORE FANS

Fan Machining

Fan Diameter	Bore, with Keyway Set Screws	Cut Down Overall Diameter	Mill Off Blade Width
Under 14"	\$50.00	\$50.00	\$65.00
14" and Over	\$60.00	\$60.00	\$75.00