

COUNTRY VIEW HOMES, INC.

37521 45TH St, Shawnee, OK
405.395.9989 – 405.395.9971 (fax)
www.countryviewhomesinc.com
www.facebook.com/countryviewhomesinc

STANDARD SPECIFICATIONS:

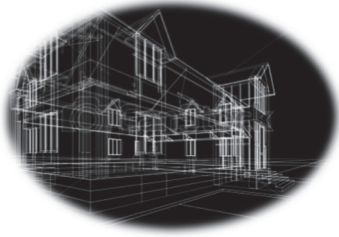
- **Lumber** – #2 or better
- **Studs** – 2"x6" on 16" center
- **Sheathing** – 5/8" OSB
- **Rafters** – 2"x4" engineered trusses on 24" center
- **Windows** – Silverline Vinyl Low-E. Energy Star Rated
- **Doors** – Fiberglass insulated entry doors with windows, inside doors paint grade Cheyenne pattern
- **Insulation** – house wrap on outside walls and R 22 net and blow insulation in the wall
- **Sheetrock** – ½" throughout home
- **Wiring** – #12-2 with ground, 200 amps, breaker box with main and all breakers, 220 for central heat and air, dryer, range
- **Lights** – regular fixtures as shown on lot, including 3 outside lights
- **Heat/Air** – Lennox or equal, electric or gas furnace to be specified at signing of contract
- **Plumbing** – ½" & ¾" pex water lines, 2" PVC drains
- **Bath fixtures** – Formica lavatories and china commodes, Delta faucets or equal, steel tub with ceramic tile around or fiberglass tub-shower combination or whirlpool sized according to home to be agreed on at signing of contract
- **Cabinets** – Solid oak cabinets in kitchen, utility, vanities in baths
- **Finishing** – inside – bedded, taped, textured ceilings, walls painted, wood work, stained and lacquered
- **Floor covering** – 100% nylon carpet, LVT in kitchen, dining, baths and laundry
- **Built-ins** – 50-gallon electric water heater, G.E. Kenmore, or Whirlpool electric range, micro hood, dishwasher, and stainless steel kitchen sink.
- **Floor Joist** – 2"x10" on 16" center
- **Floor** – 1 1/8" tongue and groove Advantech
- **Roof** – Synthetic felt under asphalt shingles
- **Siding** – vinyl siding

Homes built on location: Foundation will be as follows: 16"x18" concrete footing with slab. Porches and garages can be built on site to be agreed on before signing contract. We will provide 10" of blown in ceiling insulation, install air conditioning and stub out electric and all plumbing 2' from home.

Homes built on lot: Moving & foundation packages through **Watts House Moving** (918.906.5038). Plumber of your choice may tie in the underfloor plumbing on location, or you can contact **Wood's Plumbing** (580.759.5256).

Financing obtained through the bank of your choice.

You may provide your own floor plans and we can give you a bid from them.



COUNTRY VIEW HOMES, INC.

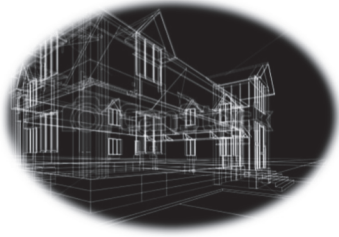
37521 45TH St, Shawnee, OK
405.395.9989 – 405.395.9971 (fax)
www.countryviewhomesinc.com

STANDARDS AND OPTIONS

HOMES START AT \$ PER SQ FT ON OUR LOT
HOMES START AT \$ PER SQUARE FOOT BUILT ON SITE WITHIN 45 MILES
OUR OFFICE

ITEMS INCLUDED AT NO ADDITIONAL COST:

- CLASS 4 SHINGLE ROOF
- SILVERLINE LOW E WINDOWS WITH ARGON GAS FILL (WHITE OR TAN)
- R22 NET AND BLOW INSULATION IN ALL EXTERIOR WALLS AND R 38 IN ATTIC (NO BATT INSULATION)
 - WHITE, BLACK, OR STAINLESS-STEEL WHIRLPOOL APPLIANCES
 - FLAT PANEL CABINET DOORS (REGULAR OR SHAKER STYLE)
 - RED OAK, KNOTTY PINE, OR PAINT GRADE CABINETS
- HIDDEN HINGES ON ALL CABINET DOORS WITH SOFT CLOSE FEATURE
- FULL EXTENSION BALL BEARING DRAWER GUIDES ON ALL DRAWERS
 - PAINT GRADE CHEYENNE OR RIVERSIDE INTERIOR DOORS
- OIL RUBBED BRONZE OR BRUSHED NICKEL FAUCETS, LIGHTS, AND DOORKNOBS
 - MICROWAVE/VENT HOOD COMBO INSTALLED OVER RANGE
 - FIBERGLASS EXTERIOR DOORS WITH GLASS
 - ½ MINI BLIND GLASS IN UTILITY ROOM DOOR
- UPGRADED LVT WATERPROOF VINYL FLOORING IN BATHS, UTILITY, KITCHEN, AND DINING AREAS (NO SHEET VINYL)
 - MOHAWK OR EQUAL 100% NYLON CARPET WITH 8LB PAD
 - BULLNOSE CORNERS ON ALL INTERIOR CORNER WALLS



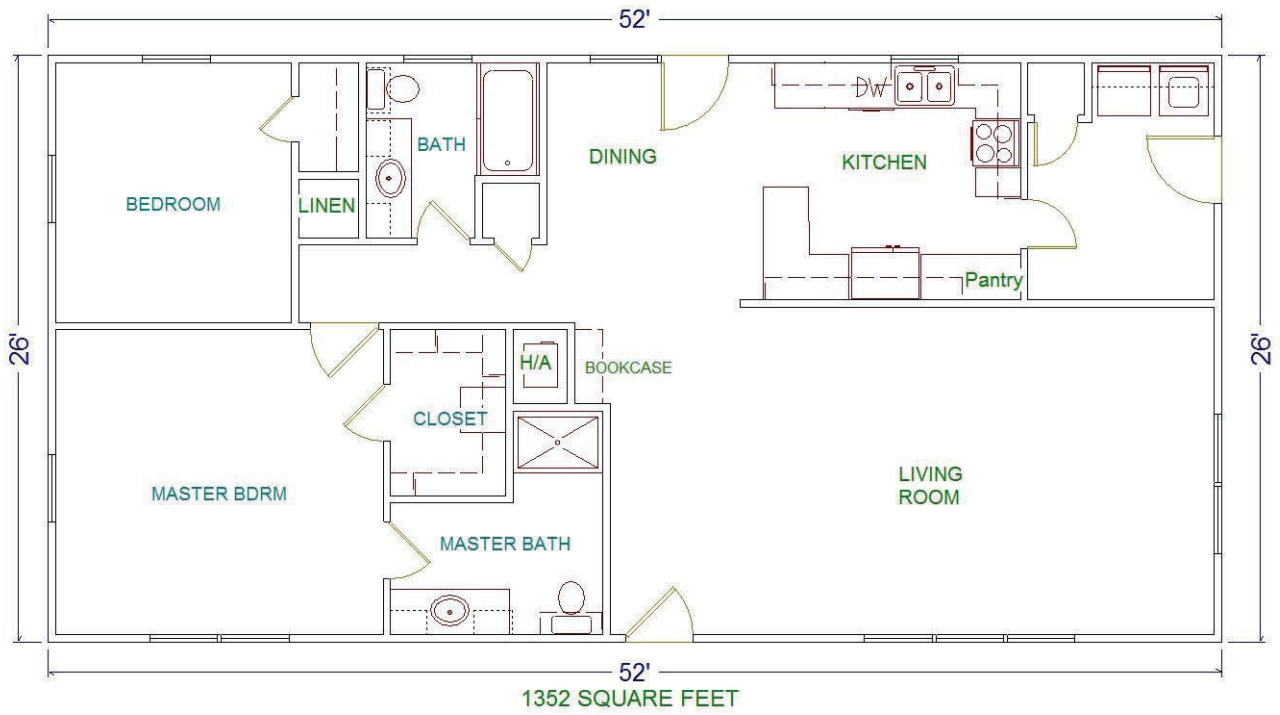
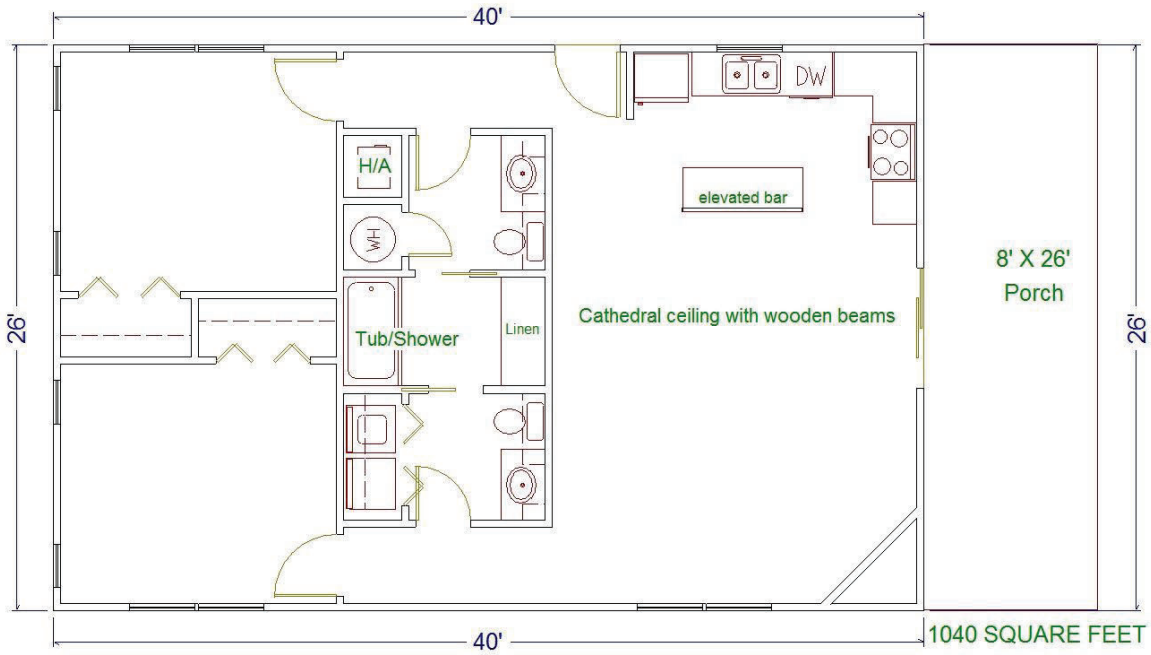
COUNTRY VIEW HOMES, INC.

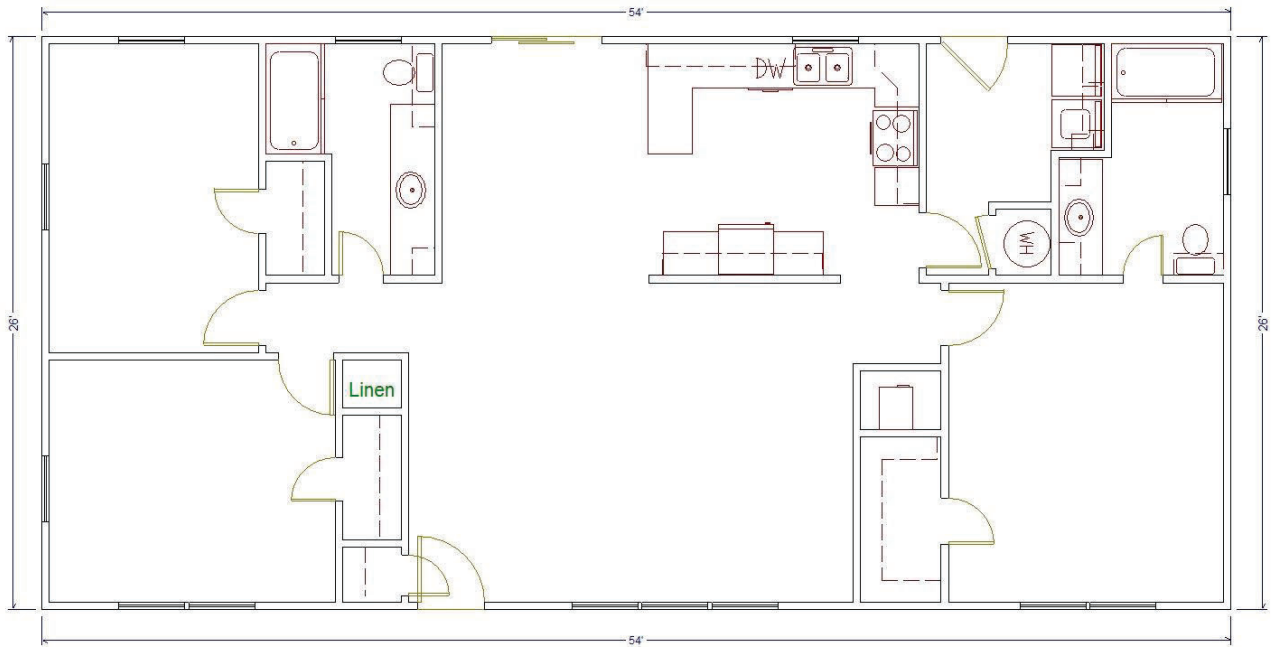
37521 45TH St, Shawnee, OK
405.395.9989 – 405.395.9971 (fax)
www.countryviewhomesinc.com

UPGRADE OPTIONS (PRICES VARY)

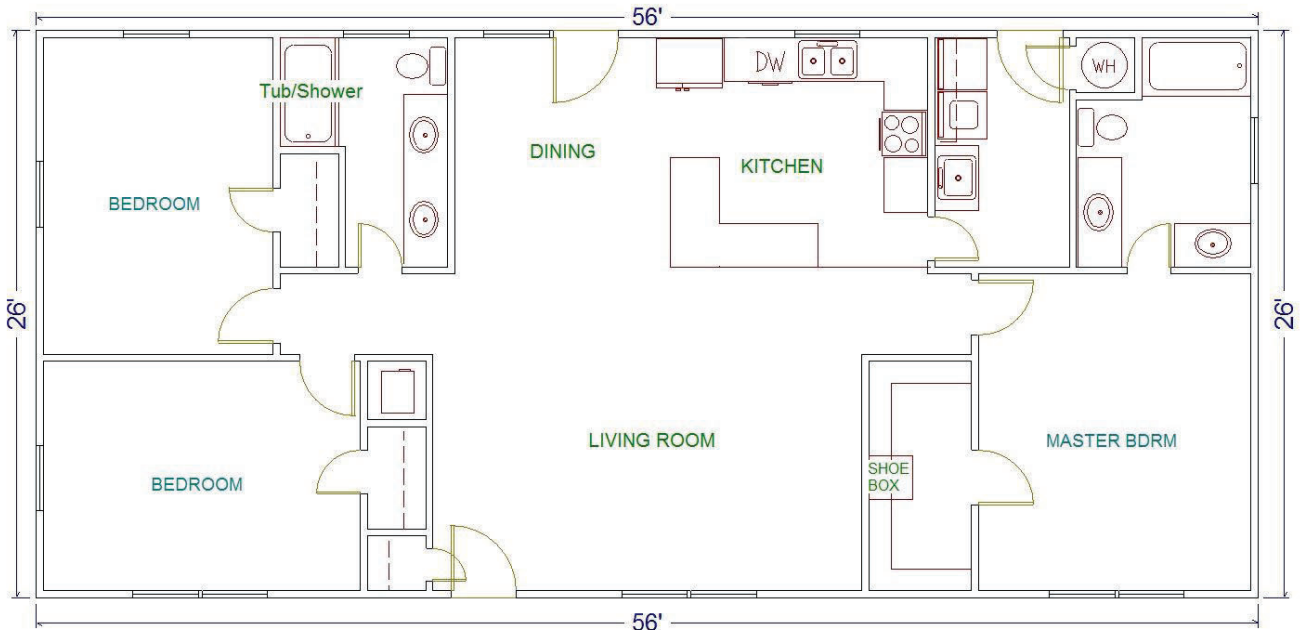
- LP SMARTSIDE EXTERIOR 8" LAP SIDING
 - LOG SIDING EXTERIOR
 - BRICK EXTERIOR
 - 26 GAUGE METAL ROOF
 - CEDAR SHUTTERS
- FULL ENVELOPE FOAM INSULATION
- GRANITE OR QUARTZ COUNTER TOPS
- WALK IN PANTRY (MULTIPLE SIZES)
- SOLID PINE INTERIOR DOORS (KNOTTY PINE OR SMOOTH)
 - BUILT IN APPLIANCES
- JETTA BRAND WHIRLPOOL TUBS
 - CUSTOM TILE SHOWERS
 - SHOWER DOORS
 - GAS LOG FIREPLACES
- WOOD BURNING FIREPLACES
- WOOD BURNING STOVES

THERE ARE MANY OTHER OPTIONS AVAILABLE. PLEASE LET US KNOW WHAT YOU WOULD LIKE AND WE WILL BE HAPPY TO GET A PRICE A PRICE FOR YOU.

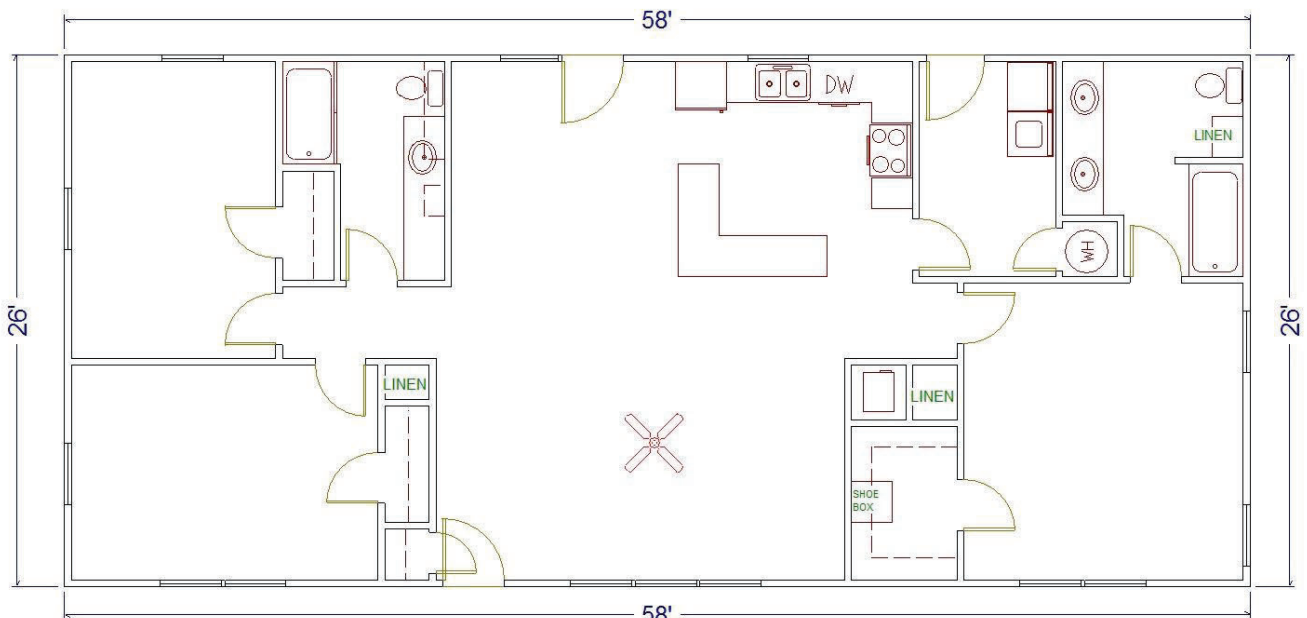




1404 SQUARE FEET



1456 SQUARE FEET



1508 SQUARE FEET

