



ANNUAL REPORT TO THE COMMUNITY

2022



Racine
Interfaith
Coalition
ricracine.org

Enjoy the **RYDE**TM

RYDE  **RACINE.com**



Download Mobile Phone
Application on iPhone or Android

**RYDE Racine thanks the Racine Interfaith
Coalition for its support of public
transportation in Greater Racine.**

RYDEtheBUS
BELLE URBAN SYSTEM

RYDEDART
DIAL-A-RIDE TRANSPORTATION

RYDEKRM
KENOSHA-RACINE-MILWAUKEE





St. Luke's
EPISCOPAL CHURCH



Proud partners in Justice and Mercy at 614 Main Street
www.hospitality-center.org www.stlukesracine.com



*Come:
Connect-Grow-Serve-Go
with us!*

Worship with us:
10:00 a.m. in person or livestream at
www.christchurchracine.com

5109 Washington Avenue, Racine WI 53406
(262)-632-1607





Great home & auto rates for any budget.

Michelle Christensen, Agent
5401 Douglas Ave
Racine, WI 53402
Bus: 262-639-6663
michelle@myracineagent.com

Surprisingly great rates await when you have options like bundling your home and auto insurance. Call me for a quote today.

State Farm Mutual Automobile Insurance Company
State Farm Indemnity Company
State Farm Fire and Casualty Company
State Farm General Insurance Company
Bloomington, IL

Like a good neighbor, State Farm is there.®

State Farm Florida Insurance Company
Winter Haven, FL

Individual premiums and budgets will vary by customer. All applicants subject to State Farm® underwriting requirements. Availability and amount of discounts and savings vary by state.

State Farm County Mutual Insurance Company of Texas
State Farm Lloyds
Richardson, TX



2101551



Emaus ELCA

1925 Summit Ave | Racine, WI 53404

(262) 634-5515

EmausELCA@gmail.com

EmausELCA.org

FB: Emaus ELCA (English)

FB: Parroquia Emaus (elca) Racine (español)

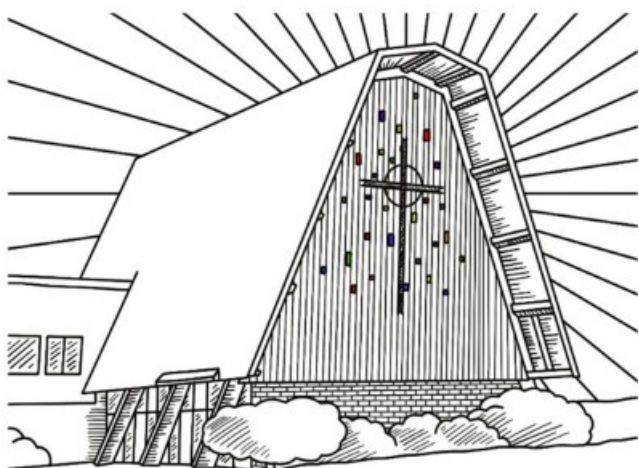
Worship with us/ Adorar con nosotros

Saturday at 4:30 pm (English)

Sunday at 9:00 am (English)

Domingo 11:00 am (español)

Covenant Presbyterian Church



40 Ohio Street, Racine, WI 53405

Phone: 262-634-4597

Website: www.covpres.org



Marlo Harmon

Racine County Board

Representing District 8
3438 Victorian Dr.
Racine, WI 53406

P: 262.676.3090

racinecounty.com

marlo.harmon@racinecounty.com



WARNER CONSULTING, INC

Jay Warner, Ph. D. Principal Scientist

Racine, WI 53403

262-634-9100

quality@a2q.com www.a2q.com

What do you want to improve today?



Eric Johnson, MPT

Family-Owned Private Practice offering One-on-One care for all your PT needs.

1600 Ohio Street, Racine

262-995-7291

WWW.MYMOTIONPT.COM

Proudly serving the Racine Community for over 18 years!

www.obuuc.org
625 College Avenue
Racine, WI 53403
(262) 634-0659



OLYMPIA BROWN UNITARIAN UNIVERSALIST CHURCH

Our church is a community of hope, challenging us to transform ourselves, promote love and justice, respect all faiths, and shepherd our planet.

Service at 10 a.m.



Jonathan Delagrave
Racine County Executive

Working together to make
Racine County stronger

262.636.3273 RacineCounty.com

730 Wisconsin Avenue
Racine, WI 53403

Clement Memorial A.M.E. Zion Church
Racine, Wisconsin



Rev. Merdis Hudson
Pastor



Rev. Katina Washington

Join us for
Tuesday Night
BibleStudy

ZOOM I.D. 824-474-1999
Password 627366
Conference Call
605-313-4350
Passcode 7941049
6PM CST

“Injustice anywhere is a threat
to justice everywhere.”

- Dr. Martin Luther King, Jr.

The Racine Dominicans
proudly support the mission of
Racine Interfaith Coalition.



DOMINICAN SISTERS OF RACINE

Committed to Truth - Compelled to Justice



Racine Interfaith Coalition members do
such good works.

The words of Jesus:
And for those who do good works, eternal
life.

-Fr. Yeprem Kelegian



322 Ohio St. | Racine, WI 53405
(262) 637-7431
www.lcrracine.org

*We Share the Resurrection by:
Loving Jesus, Changing Lives and
Reaching Out to Serve*

Traditional Worship 8am | Education Hour 9am
Contemporary Worship 10am

Contemporary Outdoor Worship at 10am
Memorial Day thru Labor Day



WWW.PRINTENVYDESIGNS.COM



Empowering Seniors, Caregivers, and Adults living with disabilities to connect with community resources.

14200 Washington Ave, Sturtevant

833-8777

www.ADRC.RacineCounty.com

Congratulations to the Racine Interfaith Coalition for your faithful Community Service



St. Rita Parish

4339 Douglas Ave., Racine, WI 53402

262-639-3223/st-ritas.org

Email: parishoffice@stritaracine.org

Pastor: Fr. Michael Petersen

Deacon: Mr. Greg Petro

Saturday Vigil—4:45 PM

Sunday—8:00 AM and 10:30 AM

Tues., Wed., Fri—8:00 AM



Sacred Heart
CATHOLIC CHURCH

*A Community of the Spirit
where we make and grow disciples
of Jesus*

Weekend Masses

Saturday 4:30 PM Sunday 8 AM and 10 AM

Tuesday Taizé Mass 6 PM

Wednesday to Friday 9 AM



North Pointe United Methodist Church

3825 Erie Street, Racine, WI 53402

(262) 639-2441

office@northpointeracine.org

www.northpointeracine.org

Pastor: Rev. Susan Barham



RECONCILING MINISTRIES NETWORK

Sunday services: 9:15 AM

Videos of all services are available on our Facebook page

Outreach Ministries



Northside Food Pantry
Tuesday and Thursday
2:00 PM to 4:00 PM



Diaper Ministry
Monday
11:00 AM to 1:00 PM





The King will reply, 'Truly I tell you, whatever you do for one of the least of these brothers and sisters of mine, you did for me.' Matthew 25:40

With Prayers for RIC and the good people of Racine -
St. Mesrob Armenian Apostolic Church
Racine, WI

Christopher Infusino CPA

Income Tax Preparation & Small Business Accounting

6633 Green Bay Road
Kenosha, WI 53142

p (262) 705-6063
f (262) 694-5939

infusinocpa@yahoo.com

Visit me on facebook - Christopher Infusino CPA



NEIL J. VRANAK

STATE FARM AGENT

216 6th Street
RACINE, WI 53403

262-639-7678

neil@vranakinsurance.com



WWW.VRANAKINSURANCE.COM

Stop in to get a quote and have your photo taken with Jake today!

NorthernLightsGallery

and boutique

thenorthernlightsgallery.com
423 Main Street, Racine, WI



Your source for unique gifts - shop online and in store. Free shipping on online orders over \$35, and we offer local pickup

Mike & Ann Frontier
Thanks RIC for all you do.
Keep Bending History

Together, we can strengthen the health, education and financial stability of every person in Racine County.

UnitedWayRacine.org/Live-United



Providing support, education, resources, and advocacy for people of all sexual orientations and gender identities

1456 Junction Avenue
Racine, WI 53403
Phone: (262) 664-4100
Website: lgbtsewi.org



TriCity National Bank

Hometown support from your hometown bank.



1.888.TRI.CITY (1.888.874.2489)

www.tcnb.com

Mem
FD



 **NAMI** Racine County
National Alliance on Mental Illness
ADVOCACY • EDUCATION • SUPPORT

YOU ARE
NOT
ALONE

NAMIRACINECOUNTY.ORG

Exceptional Events of Kenosha, llc.



Weddings & Receptions
Food & Beverage Catering
Theme Events & Holidays
Phone: 262-770-6082

Email: exceptionaleventofkenosha@gmail.com

Facebook: [exceptionaleventsofkenosha](https://www.facebook.com/exceptionaleventsofkenosha)

MENTAL HEALTH PROGRAMS AT
NO COST TO PARTICIPANTS





David Liners
Executive Director



2022-23 will be yet another flurry of activity for justice in the WISDOM network. Much of the remainder of 2022 will be focused on “Integrated Voter Engagement.” (IVE) WISDOM and RIC are non-partisan organizations. While we do not endorse particular candidates, we will work throughout the state to encourage people to exercise their right to vote. And, we will encourage people to take that right seriously, keeping in mind their values and the issues we have been involved with for years. There are many ways our organizations are doing IVE. Here are a few:

- Going door-to-door to engage people in conversation about the issues, and making sure people are reminded about when, how and where to vote. (RIC’s “Turn Up The Vote” work has been a model for other communities for this)
- Relational Voter Program (RVP). This is a program where individuals make a commitment to reach out to 10-20 people they already know (friends, relatives, neighbors) to let them know about issues and to encourage voting
- Candidate forums and other educational events

Wisconsin’s elections in 2022 will have a huge impact on the future of our state and our country. Some politicians are actively trying to make it harder for some people to vote. We believe that Wisconsin and the USA work best when EVERYONE’s voice is heard.

2023 will be another State Budget year! Wisconsin operates on a 2-year budget cycle. That means that in the first half of 2023, our state will develop and pass a budget that will be in effect from July, 2023 to June, 2025! The budget will impact schools, health care, prisons, transportation, and more. The budget will determine how much is available for programs that are alternatives to incarceration, whether we expand Medicaid like other states have done, whether we have more or less money for buses, street repairs, housing options – and it will determine who pays what portion of the taxes to finance all of that.

Wisdom Prophetic Declaration

Where there is division, we declare unity.

Where there is hatred, we declare love.

Where there is lack, we declare abundance.

Where there is desolation, we declare renewal.

Where there is discouragement, we declare hope.

Where there is lack of strength, we declare power.

ABOUT RIC

RIC is a Racine nonprofit organization made up of 28 congregations or affiliates who are united in our belief in the inherent value of every individual and our shared obligation to create a fairer, more equitable, and more just community. The issues we tackle, and the projects we undertake, are driven by our vision and mission, our faith traditions, the commitment of our volunteers, and the statewide programs of the faith-based organization with which we are affiliated (WISDOM).

Our Vision:

We inspire and mobilize faith-based congregations to address issues of economic and social injustice through education, advocacy and community organizing.

Our Mission:

To inspire and mobilize faith-based congregations to address issues of economic and social injustice through education, advocacy and community organizing.

RIC Congregations/Organizations

Congregation/Organization	Congregation Leader	Board Representative
All Nation Pentecostal Prayer House	Rev. Roger Carson	Rev. Roger Carson
Beth Israel Sinai Congregation	Rabbi Martyn Adelberg	Joyce Plazrowski
Burlington Coalition for Dismantling Racism	Laura Bielefeldt	Laura Bielefeldt
Christ Church United Methodist	Rev. George Kafer	Tamerin Hayward & Nancy Holmlund
Emaus ELCA Lutheran Church	Marcy Wieties	Mary Janz
Greater Mt. Eagle Baptist Church	Pr. Keith Evans	Pr. Keith Evans
Higher Ground	Pr. Malone	S.N. Frazier
Holy Communion Lutheran Church	Rev. Mark Doidge	Susan Barbee
Kenosha Racine Quaker Worship Group	Quaker Worship Group	Belinda Thielen & Pamela Smiley
Living Faith Lutheran Church	Rev. Bill Mains	Ron Thomas
Lutheran Church of the Resurrection	Pr. Kelly Neiman Anderson	Colin McKenna
North Pointe United Methodist Church	Rev. Susan Barham	Betty Brenneman
Olympia Brown Unitarian Universalist Church	Pr. Danielle Lindstrom	Joe Cushing & Marybeth Zuhlke
Racine Islamic Center	Imam Wali Shakoora-Luqman	Nabeeh El Amin
Sacred Heart Catholic Church	Rev. Ricardo Martín	David Kleba
Siena Center	S. Karen Vollmer	S. Jean Verber & Tim Hall
St. Luke's Episcopal Church	Fr. Seth Raymond	Wally Herman
St. Mesrob Apostolic Armenian Church	Fr. Avedis Kalayjian	Fr. Yeprem Kelegian
St. Patrick Catholic Church	Fr. Juan Camacho	Jessica Diaz. Don Mueller
St. Paul Missionary Baptist Church	Bishop Lawrence Kirby	Connie Cobb Madsen
St. Richard of Chichester Catholic Church	Fr. Juan Camacho	Sandra Villarreal
St. Rita Parish	Fr. Michael Petersen	Deacon Greg Petro, Sue Willing, Blanche Jastrow & Deb Wollert
The Hospitality Center	Fr. Seth Raymond	Fr. Seth Raymond
United Church of God in Christ	Pr. Curtis Doss	Pr. Curtis Doss
United Lutheran Church	Pr. John Bischoff	Kenda Dues
Wayman A. M. E. Church	Rev. Ernest Ni'A	Al Johnson

EXECUTIVE BOARD & STAFF

Co-Presidents: Linda Boyle/Tammy Hayward
Vice President: Jessica Diaz
Treasurer: David Kleba
Members at Large: Wally Herman, Al Johnson, Quashana Foster
Past President: Greg Petro
Staff
Office Manager: Ri' Witer
Digital Organizer: Amanda Ali





Linda Boyle

Racine Interfaith Coalition
Linda Boyle and Tammy Hayward
Co-Presidents



Tammy Hayward

Since our last Ad Book, it has been an eventful time of getting back to a pre-Covid normal in some ways while we continue to use ZOOM for Board meetings, Executive Board meetings, and task force meetings for convenience. We began a new adventure for RIC, supporting Afghan families who were brought to the US by the Department of Defense. St. Mesrob's Armenian Church, Holy Communion ELCA, North Point United Methodist and St. Vincent DePaul were our partners on the ground with these groups making sure all went well. Linda, Tammy, and Wally Herman were vetted and took an active role and RIC held donations that came in and for a period of time ran regular meetings to facilitate the work between the volunteers. We are about half way through this first year and several churches are still willing to receive refugees, but it has not happened yet. RIC did assist by collecting and holding the funds for Olympia Brown's asylum seeking family from Nigeria who are doing well in Racine.

We are now able to hold our annual events such as the Love and Justice Breakfast (on-line) and the Sustaining member luncheon at Christ Church United Methodist, and the upcoming Food Truck Festival at St. Rita's on September 11 as well as our Banquet at Preservation Hall on December 11.

From May to the election in November the Turn up the Vote team has sent volunteers (some from as far away as Washington state) out to drop literature, help people register to vote and provide rides to the polls and to the DMV. We have added texting to our tools. We have also worked to Unlock the Vote for formerly incarcerated people who we believe should have the right to vote as soon as they leave prison.

Our Education task force continues to work for lead abatement in the Racine community and is seeking new leadership at this time. The Immigration task force after working on the Afghan issues has returned to their actions to benefit the local immigrant community. The newly reformed Transformational Justice task force (formerly ROC-WI) has received training to be Court Room Observers to assure that all persons appearing in our courts are treated fairly and equitably.

The many shootings and violent deaths in Racine led us to hold not only our regular vigils on the sites of the death, but two large anti-violence vigils at Monument Square and the MLK Center.

We have participated in trainings for both GAMALIEL and WISDOM and will be present at the Race and Power summit in November in Baltimore where a Race and Power Institute will be started to insure our ongoing commitment to anti-racism in America. Thank you for your support as we move forward!



Sue Spicer

Immigration Task Force Sue Spicer and Linda Boyle Co-Chairs



Linda Boyle

Our Immigration Task Force embarked on a new endeavor this year, settling Afghan Refugees.

We were approached by one of our members, Rev Kelly Anderson of Resurrection Lutheran Church, who works with Lutheran Social Services (LSS). They oversaw settling refugees who were housed at Ft McCoy. Mary Flynn explained the procedure to our Task Force and five groups stepped forward to co-sponsor families.

One of the most rewarding aspects was the interfaith cooperation of the co-sponsors. St Vincent DePaul partnered with North Point Methodist. St Mesrob partnered with RIC. Mt Pleasant Lutheran partnered with Resurrection Lutheran and Covenant Presbyterian. Sacred Heart and Holy Communion had enough volunteers to work alone.

Sub-committees were formed to find housing, furniture, food, education resources, transportation, and health care. Each month the committees reported to the whole group and information and ideas were exchanged. When each co-sponsor group had housing and furniture in place, they informed LSS. Afghan families began to arrive in Racine in August of 2021. Three families have been assigned so far. St Vincent – North Point, Holy Communion and St Mesrob – RIC all co-sponsored families. At this point the families are in their homes. Some have jobs, some are learning to drive. All are taking English classes. The children are in school and thriving and most health care issues have been resolved.

As refugees the Afghan families are entitled to government payments, Badger Care, and Food subsidies.

In addition to the Afghan Refugees, Olympia Brown Universalist Church is sponsoring an asylum-seeking family from Nigeria. RIC has been apart of the planning and the funding for this family. They are currently in their new home, going to school and working toward officially being accepted as asylum seekers. As asylum seekers this family does not receive any government assistance until their court case has been resolved. All their needs are met by donations.

We continue to support our local immigrant families in any way we can. RIC advocates for the families in helping to know their rights, providing some relief through our Immigrant Support Initiative, and help with paperwork through our Law Project.

For RIC's Immigration Legal Services Project, we are nearing completion of the DOJ requirements for Recognition and Accreditation. A kind lawyer in Milwaukee has offered to provide the last mentoring opportunity we need to be able to move forward. In the meantime, the same lawyer has made us aware of a free, walk-in clinic he participates in every Wednesday at Marquette University. For more information, please see this website: <https://law.marquette.edu/mvlc/>.

Linda Boyle and Sue Spicer continue to provide presentations on topics related to immigrants. We discuss Myths about Immigrants, The difference between Refugee and Asylum, and any other questions people may have.



Turn Up the Vote Organizing Team

Linda Boyle
Joe Cushing
Rich Glasenapp
Tammy Hayward

Amanda Ali
Kathy Laru
Sue Spicer
John Scott

The Immigration Task Force is the RIC sponsor for Turn Up the Vote. This occurred because our task force was approached by a group of people asking for our help because Sheriff Deputies were targeting certain areas of the city and giving nuisance tickets. Our task force members went to these three areas and picketed with residents calling attention to unfair treatment. Later we returned to those three areas to ask if the people had other questions or issues that needed to be addressed. Through this interaction we discovered that most did not vote and did not know which branch of government helped with which issue. We created some documents that told where they could vote, how to register, and which branch could help with which issues. We have continued this relationship for the past six years. The people have learned to trust us to tell them the truth, and that we are not promoting any candidate, just helping them.

Turn Up the Vote (TUTV) began working on the primaries in April. A special thank you to our volunteers: Amanda Ali, Joe Cushing, Linda Boyle, Rich Glasenapp, Tammy Hayward, Kathy Laru, John Scott, and Sue Spicer who prepare the materials, set up schedules, train workers, and know the election laws. In an abundance of caution, we are not knocking on doors, but instead putting documents in bags and hanging on doors. We also take tables out to high traffic locations to get people registered and know where and when they can vote. We are going out on Tuesday and Thursday afternoons, and we have some big events scheduled for Saturdays. Closer to the November elections we plan to include post cards and text messaging.

We were approached by a Universalist Church in Illinois who wanted to work with us. They have traveled to Racine for one Saturday event and will also make telephone calls. Another group from Seattle Washington has also asked to come to Wisconsin and help distribute materials. These groups come to Racine because they believe that your vote is your voice, but they also think Racine is a great city and they love the people they work with and meet.

In 2022 so far, we reached over 5,000 people through canvassing efforts. We have a long way to go to ensure every person who is able to get out the vote!





Carl Fields

Transformational Justice

Carl Fields and Greg Petro Co-Chairs



Greg Petro

I am happy to be working again with Carl Fields, Bob Bagley, Tammy and Linda in the pursuit of justice and the restoration of our incarcerated and formerly incarcerated brothers and sisters. My background includes being the president of RIC in 2015 and 2016. Bob Bagley and I co-chaired one of the precursors to the current Transformational Justice Task Force, then known as the 11 x 15 Task Force, back in 2014 and 2015. I have been actively doing jail and prison ministry for the last 16 years.

WISDOM's Transformational Justice Campaign promotes policies that prevent people from going to prison, to provide justice within prisons, and to help people returning from prison to flourish in our community. The principle aims of this campaign are:

- For Wisconsin to invest in the programs and strategies that will end the racial and economic disparities that fuel mass incarceration
- For Wisconsin to reduce its prison population to 11,000, and to reduce the number of people on extended supervision
- For Wisconsinites to view people who have been convicted of a crime as human beings, members of families, and assets to the community
- For formerly incarcerated people to be restored to full participation in communities, the economy, and civic life

RIC's recent activity has centered around two initial areas. First, to organize new leadership due to past chair Pastor Prentiss Robbins, Jr. struggle with COVID-19 and his subsequent move out of the state. Second, to begin a Court Observer program in Racine. We have developed four goals for this program:

- To benefit defendants by our presence in the court room
- To identify issues for future advocacy
- To expand awareness of the reality of court procedures
- To gather data for later use

Please join us! Call the RIC office at 262-635-9532 to be placed on our email list so you can begin receiving meeting notices, training materials, etc., and/or to speak with someone about this task force.



Burlington Coalition for Dismantling Racism

President, Laura Bielefeldt

Laura Bielefeldt is the President of the Burlington Coalition for Dismantling Racism (BCDR). Laura has spent almost her entire life in the area. Having moved to Burlington at age 12, she still remembers the culture shock of being a person of

color in this white community. As an adult, she raised 3 amazing humans in Burlington and became involved in BCDR because she has experienced the pain and lifelong trauma caused by racism. With a background in health care and education, she has years of experience in trauma-informed care, challenging behaviors and de-escalation. Laura started fighting for human rights as a child with her first protest being with Voces De La Frontera on May Day, "A Day Without Immigrants." In addition to her work with BCDR, she is also part of the leadership for Revolution Ready and has worked with PACE, Thee Three Inc., and others.

The Burlington Coalition for Dismantling Racism (BCDR) was founded in 2019 by Darnisha Garbade after experiencing years of racism targeting her children within the Burlington Area School District. BCDR actively works to disrupt, unpack, and dismantle racism and racist systems. The Coalition will pursue racial justice and racial equity, reconciling people of all races within the community and schools.

Education

The Education Task Force continues to partner with COLE on the issue of Lead Abatement. Nikki Fisher is available to do presentations on this topic if groups are interested. The other work is on hold for the summer as RIC works on Turn Up The Vote getting ready for the November election.



Prayer Vigils

Led by Father Yeprem Kelegian

For 25 years, when there is a violent death, RIC members visit the site of the tragedy. As Jesus would be present in situations of pain in order to heal, we also come to pray for healing of the family and our beloved City of Racine.

We offer support to the grieving family and friends. We also remember that the deceased is our brother or sister. Each time there is a violent death, we are all diminished. We ask not "for whom the bell tolls."

With songs, led by Tony Roland, and prayer we re-sanctify the ground where blood was spilled.

And we embrace the fact that with prayer, God bids us to take action.



Supporting RIC Financially

The Racine Interfaith Coalition is a 501(c)3 non-profit organization funded by fees from our member congregations, grants, fundraising events, advertising in our annual report, and the contributions of individual donors. Throughout the past 29 years, the generosity of our community has allowed us to be consistent in our efforts to create a Beloved Community where every member contributes to the health and well being of all and inclusion, justice, equity and compassion prevail.

We take our fiscal responsibilities very seriously and our only paid staff is an Organizer and a part-time office manager. All other tasks, including grant writing, event planning and task force leadership are carried out by unpaid volunteers. Our volunteer Board of Directors, made up of representatives of each of our member churches plus officers and executive committee members, are diligent in their monthly review of our budget and expenditures.

Sustaining Membership

Because grants can come and go and the success of fundraisers can vary, our most reliable source of income is from Sustaining Members who commit to supporting us annually, either through a once-a-year or monthly contribution.

Sustaining members will be particularly important as we continue to carry out our mission to inspire and mobilize faith-based congregations to address issues of economic and social injustice through education, advocacy and community organizing.

We invite you to become a Sustaining member by filling out the form on the next page or by contacting the RIC office at 262-635-9532 or emailing us at ricracine1993@gmail.com. One-time gifts are, of course, also welcome and very much appreciated.

Legacy and Inheritance Giving

We have recently joined with WISDOM to create an Endowment Fund that will support legacy giving. You can ensure that the good work of RIC continues for years to come by remembering us in your will. Your gift, large or small, will help guarantee that we can always have great community organizers, that all our leaders, no matter their economic circumstances, will be able to access world-class leadership training, and that our fight for justice never wanes.

If you are receiving an inheritance, you might also want to consider tithing – giving 10% of your inheritance back to the community. One result of generations of racial and social inequity is the great disparity in accumulated wealth. Donating a portion of your inheritance to justice organizations can be a way to repair that inequity.

For more information about legacy or inheritance giving, contact the RIC office.



RIC Sustaining Member Enrollment Form

Name(s): _____ Phone: _____

Address: _____ City/Zip: _____

E-Mail: _____ Congregation: _____

Monthly Giving

Yes! I would like to become a RIC Sustaining Member by enrolling in the monthly giving program.

Electronic Funds Transfer – Authorization Agreement for Direct Payments (ACH Debits)

I/we hereby authorize RIC to initiate debit entries to my (our) Checking Account or Savings Account for the amount listed below at the depository financial institution named below or on the enclosed voided check. I (we) acknowledge that the origination of ACH transactions to my (our) account must comply with the provisions of U.S. law.

Please debit \$ _____ from my account monthly. I would like to begin on the 15th of _____ (Month)

Underline which account you would like your automatic withdrawal taken from.

Checking Account: ATTACH A VOIDED CHECK (not a deposit slip)

Or

Savings Account: ATTACH A SAVINGS DEPOSIT SLIP or fill in the information below

Routing Number: _____ Account Number: _____

This authorization is to remain in full force and effect until RIC receives written notification from me (or either of us) of its termination in such time and in such manner as to afford RIC and the depository financial institution a reasonable opportunity to act on it.

Signature: _____ Date: _____

If joint

Second Signature: _____ Date: _____

Annual Gift

Yes! I am/want to be a Sustaining Member, but I prefer to make an Annual Donation (Renewable)

I have enclosed a check for: \$120 \$250 \$500 \$1000 Other

REMEMBER: RIC is 501(c) 3 - Tax Deductible charitable organization



Racine Interfaith Coalition's History Started 29 years ago



The Racine Interfaith Coalition was formed 29 years ago to enlist faith-based organizations in Racine to work for social justice, especially on behalf of those without wealth and power. According to Sister Jeanne Kimler, local lawyer Stephanie Lazzeroni saw the need for working with others in faith and talked to her pastor, Mark McDonough of Covenant Presbyterian Church. To learn more about organizing faith communities, the two of them attended a Milwaukee Inner City Congregations Allied for Hope (MICAH) meeting where they met MICAH's Lead Organizer, Ana Garcia-Ashley, who would later become an organizer for RIC.

Eventually, leaders from about twenty congregations assembled to consider how their churches could combat racism, poverty, violence and other problems confronting Racine. Late in 1994, Lazzeroni and McDonough also arranged a meeting at the Siena Center with the Gamaliel Foundation where they and others saw a presentation about organizing faith-based communities. After that meeting, RIC became affiliated with Gamaliel.

News of the fledgling body spread quickly throughout the community and the Racine Interfaith Coalition was born. From 1993 to 1995, RIC's main thrust was to enlist as many faith-based organizations as possible. Between 1994 and 1996, RIC grew from ten members to 15 and has grown since to include 28 faith communities. During this time of rapid growth, RIC was able to hire an organizer to help direct the activities and recruit new members. Today, RIC has six active task forces, staffed by dozens of volunteers from local congregations and the community, who are working every day to fulfill the organization's original mission.

In January of 2000, RIC came together with sister organizations in Milwaukee (MICAH) and Kenosha (CUSH) to form the WISDOM network. Since that time, WISDOM has expanded to Beloit/Janesville (JOB), the Fox Cities (ESTHER), Green Bay (JOSHUA), Manitowoc (RUTH), Waukesha County (SOPHIA), Eau Claire (JONAH), Wausau (NAOMI), Madison (MOSES), and the Menominee Reservation (Menikanaehkem). WISDOM also includes EXPO (EX-incarcerated People Organizing), which has chapters around the state.

Grants and Special Donations

Grants

Catholic Campaign for Human Development (CCHD)

Racine Dominican Mission Fund

Special Donations

The Buhler Family

Navigator Racine

Schwab Charitable

Jewish Community Foundation

And thank you to the special donors of the Afghan resettlement!

RIC 2021 Sustaining Members/Special Donors

Because grants can come and go and the success of fundraisers can vary, our most reliable source of income is from Sustaining Members who commit to supporting us annually, either through a once-a-year or monthly contribution, and from other generous community members who make substantial gifts to the Racine Interfaith Coalition throughout the year. Below is a list of all those who were so generous in 2021. We wouldn't exist without them.

Amanda Boyle	Joan Roehre	Richard Glasenapp
Amy Harrison	Joannie & Warren Williams	Robert & Rachel Trobaugh
Amy Larsen	Jody Spencer	Robert Henzl
Art & Nancy Smith	John & Cathie Lehman	Robert Bagley
Barbara Presser	John Scott	Robery Reinders
Belinda Thielen	Joseph & Sharon Cushing	Ron Thomas
Betty Breneman	Judy Quinn	Sandra Roberts
Bill Schalk	Karen Kunesh	Sandy Veit
Bob Henzl	Karen Larsen	Scott Terry
Bob Wirch	Kathleen Laru	Sharon Janus
Brenda Trumbauer	Ken & Kenda Dues	Susan Barbee
Bryon Spencer	Kimberly Payne	Susan Janecky
Cara Pratt	Linda Boyle	Susan Spicer
Chester & Ruth Melcher	Lorraine Lee	Tamerin Hayward
Connie Cobb Madsen	Louis & Kathleen Peterson	Thomas & Mary Flanagan
Connie Molbeck	Margaret Andrietsch	Tom & Marcia Buhler
Daniel & Marcia Laehr-Tenuta	Maria Paula Voelkel	Trevor Jung
David Kleba	Mark Lukow	Wally Herman
David & Barbara Zirkelbach	Mary Ruffalo	Wayne Johnson & Marge Miller
David Zablony	Mary Hope Skalitzky	Wendy Wise
Debra Hall	Mary Janz	William Garvey & Diane Lange
Don & Julie Burton	Mary Totero	Yeprem & Judy Kelegian
Don and Cheryl Mueller	MaryBeth Zuhlke	
Elaine Marie Kinch	Meline & Avak Grigorian	
Glenda Alexander	Merdis Hudson	
Greg Petro	Michael Mueller	
Greta Neubauer	Mike & Anne Frontier	
Helen Zelinger	Nancy Egghert	
Jaime Nolla	Nancy Holmlund	
James & Linda Haack	Nick Akgulian	
Janet Elizinga	Nikki Fisher	
Jean Smith	Patricia Ruppe	
Jean Verber	Patty Walker	
Jeff & Mary Siuta	Pauline Mitchell	
Jerold Hershberger	Quashana Foster	
Jewel Jones	Renee Billman	



Proudly supports the
Racine Interfaith Coalition

Celebrating your Life...
 Religious ~ Traditional ~ Contemporary
 Cremation ~ Green

639-8000
 Douglas Avenue at Three Mile Road
 www.purath-strand.com

*St. Richard of Chichester
 Catholic Parish*
 1509 Grand Avenue
 Racine, WI 53403



**Proud Member of RIC
 Since 1998**

Phone: (262) 637-8374
 E-Mail: info@strichard-parish.org
 Web: www.strichard-parish.org
 Facebook: "St. Richard Parish-Racine"



Congratulations!!!
 Racine Interfaith Coalition
As you continue to work, serve, and strengthen our community

Ernest J. Ni'A, Pastor



Saint Patrick Catholic Parish
Parroquia de San Patricio
 1100 Erie St., Racine, WI 53402
 262-632-8808 Fax: 262-637-1536
 E-mail: church@stpatrickracine.com

Mass Schedule

Wednesday	6:00 p.m.	Spanish
Saturday	4:00 p.m.	English
Sunday	9:00 a.m.	English
	10:30 a.m.	Spanish
	12:00 noon	Spanish
	6:00 p.m.	Spanish



Wilson's Coffee & Tea

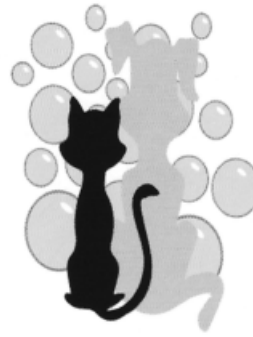
3306 Washington Ave.
Racine, WI 53405

(262) 634-6611
wilsoncoffee.com

Racine's original coffee roaster features the finest coffees from around the world.

- Full espresso bar
- Bakery made from scratch daily
- Great tea and gift ideas
- Buy pounds of coffee online to ship anywhere in the US

Monday-Saturday 7AM-5PM
Sunday 9AM-3PM



Avenue Pet Shoppe

Grooming & Supplies

3222 Washington Ave.
Racine WI 53405

Hours M-Sat. 10am - 6pm
262-633-7300

Avenuepetshoppe@aol.com
www.avenuepetshoppe.com



Funeral Home & Cremation Services

1001 High Street, Racine, WI 53402
262-632-5101



Congratulations
Racine Interfaith Coalition
From
The Habitat ReStore
Volunteers
262-898-2929



Private retreats, spiritual enrichment,
space for group retreats

www.SienaRetreatCenter.org
5637 Erie St., Racine, WI 53402
262 • 898 • 2590



Draeger Langendorf
Funeral Home & Crematory

4600 County Line Road
Racine, Wisconsin 53403
Phone: 262-552-9000
Fax: 262-552-9100
dlfh@draeger-langendorf.com

MAHOGANY GALLERY

WWW.MAHOGANYGALLERY.COM

SCOTT TERRY

CEO / Founder

1422 Washington Ave.
Racine, WI. 53403
262.865.7971

scott.terry@mahoganygallery.com

FB / IG / TIK TOK : @mahoganygallery

The Kenosha-Racine Quakers congratulate our fellow RIC members for their contributions to the Racine community; they bring us closer to our Quaker testimony:

“Do rightly, justly, truly, holily, equally to all people in all things.”

Our Quaker Worship Group meets every Sunday at 10am.

For information contact tdarrowmke@gmail.com



Serving Racine's most vulnerable youth since 1971.

1030 Washington Ave
Racine, WI. 53403
(262)637-9559,
Fax (262)632-8758

SAFE Haven of Racine, Inc.
www.safehavenofracine.org

Congratulations to RIC on its work to enhance the well-being of our community.

Racine Education Association Retired

Supporting Racine educators through affiliation with the Wisconsin Education Association Council (WEAC) and the National Education Association (NEA)



Immigrant Myths Proven False

1. They're a drain on the US economy.
2. They take away jobs from Americans.
3. They increase the crime rate.
4. They get benefits like Social Security and Medicare.
5. They don't want to learn English.
6. They don't pay taxes.



WE HAVE A REPUTATION FOR

- GREAT ABUNDANCE
- FINE QUALITY
- QUICK SERVICE

3114 Washington Ave
Racine WI

For carryout and delivery: 637-1012 or 637-4808
HOURS: Sun.-Wed. 7 am-9 pm
Thurs.-Sat. 7 am-10pm



HOT SHOP GLASS

Studio & Gallery

239 Wisconsin Avenue
Racine, WI 53403
262.833.0095
info@hotshopglass.com
www.hotshopglass.com

Gallery Open Saturdays
10am – 4pm
Classes and studio rental available

Amanda Cosgrove Paffrath • Daniel Sviland



Beth Israel Sinai-New Jewish Outreach
Congregation

Martyn Adelberg
Rabbi



3009 Washington Avenue
Racine, Wisconsin 53405
262-633-7093
847-529-1609

rabbimartyn@gmail.com
www.bethisraelsinai.org
rabbimartynadelberg.weebly.com



The Neubauer Family

Thanks the
Racine Interfaith Coalition
for all of the work you do
for Justice in the
Racine community

STATE
REPRESENTATIVE

G R E T A
NEUBAUER★



66TH ASSEMBLY DISTRICT

Please feel free to reach out
to share your thoughts or for
help with a state agency!

STATE CAPITOL
P.O. Box 8953, Madison, WI 53708

TEL. (608) 237-9166
TOLL FREE (888) 534-0066

EMAIL
rep.neubauer@legis.wisconsin.gov

WEB
legis.wisconsin.gov/assembly/66/neubauer



AUTO EXCELLENCE
COMPLETE AUTOMOTIVE TECHNICIANS

Monday- Friday
730 am – 530 pm

(262) 554-6061

Elmwood Plaza • 3701 Durand Avenue • Racine, Wisconsin 53405

R RASMUSSEN
DIAMONDS

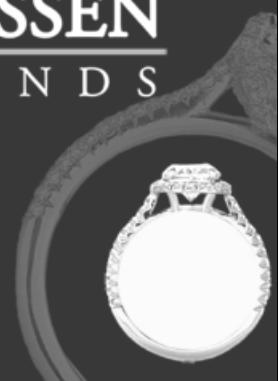
Kathy Sustachek

Registered Jeweler AGS

262.884.9474

6220 Washington Ave.
Mount Pleasant, WI 53406

Kathy@rasmussendiamonds.com





Assisting You to Lead Your Most Independent Life

Independent Living Services and In-Home/Personal Care
Assisting Persons of Any Age, with Any Disability

800-378-9128 5200 Washington Avenue, #225
www.societysassets.org



Since 1974



Our Vision

A Beloved Community where every member contributes to the health and well-being of all and inclusion, justice, equity and compassion prevail.

Thank you to all of our supporters, patrons, volunteers, clergy, community members and congregations that work every day to help us achieve that vision.

Ways To Support RIC

- Introduce RIC to your Congregation/ Organization
- Participate on a Task Force
- Come to vigils, events and presentations
- Join us at our Love & Justice Breakfast, Annual Meeting and Annual Banquet
- Place an ad in our *Annual Report to the Community*
- Become a Sustaining Member
- Make a one-time donation of any amount
- Include RIC in your estate planning
- "Like" us on Facebook

CONGRATULATIONS



On behalf of the City of Racine, I congratulate and thank the Racine Interfaith Coalition for continuing the work of promoting peace and justice in our community. Your dedication and service to the residents of Racine is invaluable and I am grateful for all that you do.



Mayor Cory Mason

“Thanks and praise to all members of RIC who are showing love to our immigrant sisters and brothers.”

Cathie and John Lehman

Elmwood Plaza
JEWELERS



3701 Durand Avenue Racine, WI 53405 262-554-0804
www.elmwoodplazajewelers.com

Rosanthorn

HERBS & ACUPUNCTURE

Jennifer Rose, L.Ac., MSOM

611 7th Street
Racine, WI 53403
262.331.4083 / jrosanthorn@gmail.com
rosanthorn.com



Bethany Apartments
Sanctuary and Strength for Victims of Domestic
Abuse Since 1990

Thanks RIC for all you do!

bethanyapartments.org

262-633-9446

Mario Martinez, LUTCF
Independent Insurance Agent

office 262-456-0321
email mario@marzins.com
web marzins.com

3716 Durand Avenue
Racine, WI 53405



Marz Insurance
Services



2000 West Sixth Street
Racine, WI 53405
(262) 632-8802
Office.hclc@gmail.com
www.hopeonahill.org

Pastor Mark Doidge
Pastor Laura Fladten

Sunday worship: 8:30 AM and 10:45 AM
Food Pantry: Monday and Friday, 12:30 to 3:00 PM



Greater Milwaukee Synod ELCA



ROBERT W. WIRCH
State Senator , Twenty-Second District

Office: 127 South, State Capitol

Mailing Address:

State Capitol

P.O Box 7882

Madison, WI 53707-7882

(608) 267-8979

Email: Sen.Wirch@legis.Wisconsin.gov
www.legis.Wisconsin.gov/senate/22/Wirch

Paid for by friends of Bob Wirch



SEBASTIAN'S
Fine Food & Spirits
www.sebastiansracine.com

**Coming
Together
RACINE**



Our Mission

To actively challenge and eliminate racism in the greater Racine community.

Our Vision

To create a genuine interracial community where all people have equal voice and access to resources and opportunities.

Our Purpose

To develop and conduct activities that support and advocate for the understanding and appreciation of diversity in the greater Racine community.

For more information, contact:

rsalinas_hultman@hotmail.com



Find us on Facebook



FIGHT TO END EXPLOITATION

OUR MISSION:
STOP HUMAN TRAFFICKING IN WISCONSIN

www.FightToEndExploitation.org



BURLINGTON COALITION FOR
DISMANTLING RACISM

Actively Working to Disrupt,
Unpack & Dismantle Racism
In Burlington, WI

BCDRACISM.ORG

Building Waters, Inc.



**Plumbing, Electrical, Heating,
Air Conditioning & Refrigeration Services**

Your One Stop Shop Baby, One Stop Shop

262-989-1001

www.buildingwaters.com



Best Wishes !

Your friends,

The Meredith's

MARESH-MEREDITH & ACKLAM

"A Family Funeral Home"
803 Main Street Racine, WI (262) 634-7888
www.meredithfuneralhome.com



Northern Oaks Remodeling

Division of **Building
Waters, Inc.**

262-989-1001

www.remodelingracine.com



Pet Valhalla Inc. Pet Cemetery & Crematory

In Remembrance of Devotion
Burial or Cremation

10025 Kraut Road
Franksville, WI 53126
www.pet-valhalla.com

Scot & Sara Anderson, Owners
Phone (262) 886-0552
info@pet-valhalla.com

RICCHIO PRINTING SERVICES, INC.

1623 Douglas Avenue
Racine, WI 53404
Phone: 262-637-2344
rpsinc@sbcglobal.net
www.rpsinc.ricchio.com

PRINT - COPY - DESIGN

- XEROX DIGITAL COLOR COPIES *Established 1993*
- FULL COLOR PRINT
- GRAPHIC DESIGN
- BUSINESS CARDS
- LETTERHEAD
- ENVELOPES
- BROCHURES
- BOOKLETS
- TICKETS
- NOTE PADS
- NEWSLETTERS
- LABELS
- LAMINATION
- STAMPS ,RUBBER / SELF-INK
- COMB BINDING
- FORMS
- MAGNETIC SIGNS / YARD SIGNS / BANNERS
- SPECIALTY ITEMS: MUGS, MATCHES, PENS, ETC.



St. Paul Missionary Baptist Church
"A Congregation of Jesus Christ"



Morning Worship 7:45 A.M. & 10:45 A.M.

***Sunday School 9:30 A.M.**

Mid-Week Service 11:00 A.M. & 6:00 P.M.

Church Office Hours: Tues.-Fri. 10:00 A.M.-5:00 P.M

Bishop Lawrence L. Kirby, Pastor
 1120 Grand Avenue
 Racine, WI 53403
 (262) 632-1467
spchurch@execpc.com



**Racine/Kenosha
 Vocational Ministry, Inc.**
futures in spirit and hope

For program information call 262-633-8660



R/KVM IS GRATEFUL FOR THE WORK OF THE RACINE
 INTERFAITH COALITION!

Keep up the good work!!

We ignite a
 spirit of
 excellence in
 faith,
 knowledge,
 and service,
 inspiring
 students to be
 who God
 created them
 to be.



SIENA
 CATHOLIC SCHOOLS OF RACINE
 FAITH FORWARD EDUCATION



email admissions@sienacatholicschools.org for more information

**COLDWELL
 BANKER**
 REAL ESTATE



Rae McWhorter, Realtor
 262-498-8724
 262-681-2020
rajeeyah.mcwhorter@cbexchange.com

6800 Washington Ave, Ste E
 Racine, WI 53406

Racine Interfaith Coalition



The Buhler Family
Supports
Your
Valiant Efforts

helping make our community a better place.



scjohnson.com



scJohnson
A family company
at work for a better world