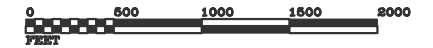


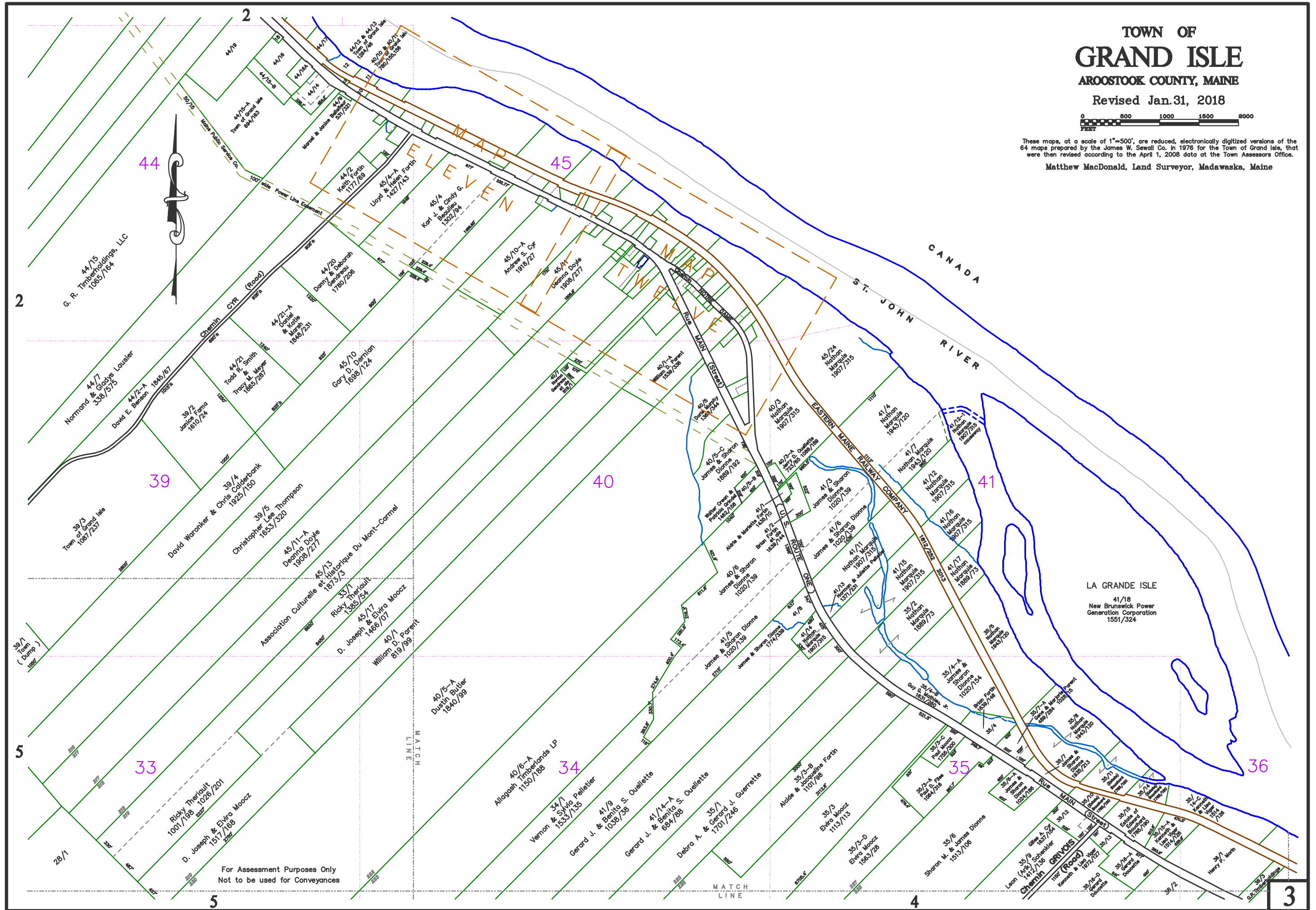
TOWN OF  
**GRAND ISLE**  
AROOSTOOK COUNTY, MAINE

Revised Jan.31, 2018



These maps, at a scale of 1"=500', are reduced, electronically digitized versions of the 64 maps prepared by the James W. Sewall Co. in 1976 for the Town of Grand Isle, that were then revised according to the April 1, 2008 data at the Town Assessors Office.

Matthew MacDonald, Land Surveyor, Madawaska, Maine



For Assessment Purposes Only  
Not to be used for Conveyances

MATCH LINE

MATCH LINE