

Accent Walls & Kitchen Backsplash Board



Shield Panels of Paint Baum, LLC.



Kitchen Board Backsplash



Full height Panel



Our Kitchen Board collection comes in a standard size of 24 13/32" x 18 7/64"

You can also use combine the Kitchen Board collection with our full-length panels to cover a whole wall to create your dream look.

Contents

- 04 **Kitchen Board**
- 06 **Marble**
- 08 **Metal**
- 10 **Minerals**
- 12 **Monochrome**
- 14 **Clad the entire wall**
- 16 **Our designs**
- 18 **Collection Overview**
- 20 **Accessories**
- 22 **Installation**
- 24 **Environment & Quality**

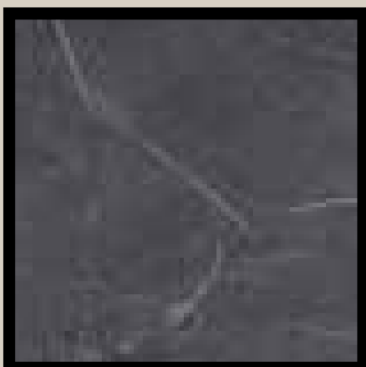


Marble

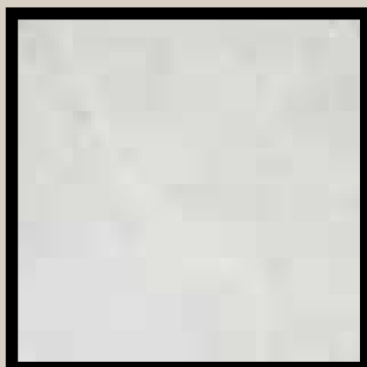


Kitchen Board is the fastest way to renovate and give the kitchen a personal touch. We offer a wide range of easy-care and maintenance-free panel.

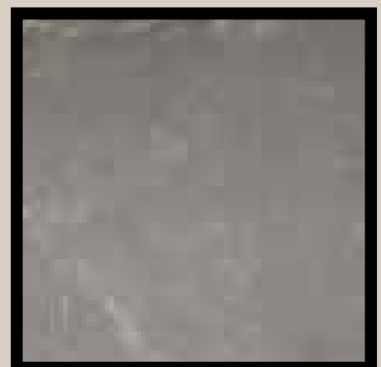
Kitchen Board is mounted directly on studs or the existing back wall. Follow the installation instructions that come with the product or at [ShieldPanels.com](https://www.ShieldPanels.com)



**2272 S
BLACK MARBLE**



**2273 S
WHITE MARBLE**



**2278 S GOLDEN
BROWN MARBLE**

TIMELESS CLASSICS

Marble designs consistently stand the test of time and rarely go out of fashion. We have three marbles to match all kitchen designs.

Black Marble:
Perfect if you are aiming for an edgy, contemporary look.

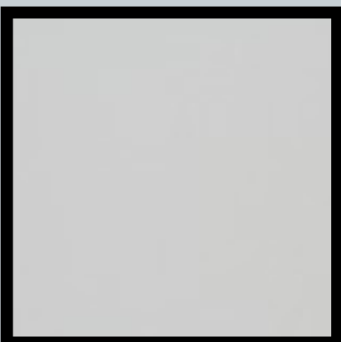
White Marble:
Light and airy and offers a subtle touch of grace.

Golden Brown Marble:
Perfect for creating a calm and cozy atmosphere.

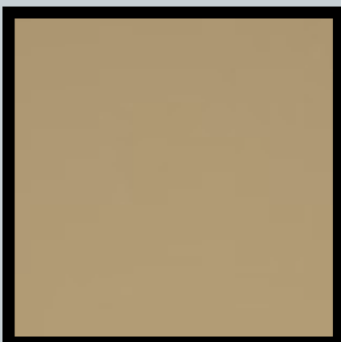


Full length panels are perfect for spaces where you do not have any cabinets. Choose Shield Panels for style and protect your kitchen wall at the same time.

Metal



**5003 MET
STEEL**



**5004 MET
GOLD**



**5006 MET
COPPER**

METAL SURFACES CREATE A UNIQUE LOOK AND FEEL



Kitchen Board with metallic surfaces help create a modern, industrial looking kitchen.

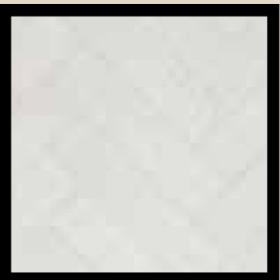
Create a modern look and feel with a shining metal decor in brushed gold, copper, or steel.

Combined with earthy colored details and elements from nature, you get a tough looking kitchen that really stands out.

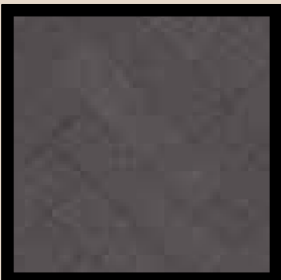
Minerals



0145 SOFT CEMENT



**4001 S
TERRAZZO LIGHT**



**4002 S
TERRAZZO DARK**



**8056 STN
LENTINI DARK**



**8053 STN
LENTINI GREY**

4001 TERRAZZO LIGHT



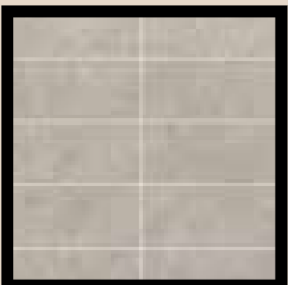
4002 DARK TERRAZZO



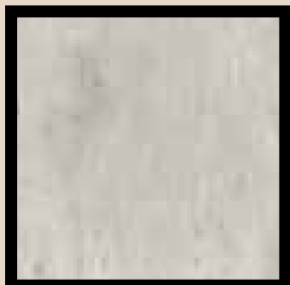
STONE TEXTURES AND NORDIC NATURE

Bring nature indoors! Choose a mineral decor and give your kitchen that natural feel.

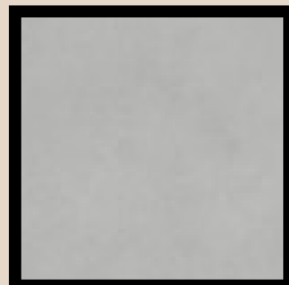
Choose between large-grained Terrazzo, a soft and fine-grained Sahara or a rougher look with any of our cement variations.



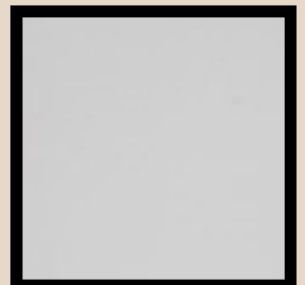
4746 STN
GREY SAHARA



2204 S
CRACKED CEMENT



0145 S
SOFT CEMENT



0192 S TITAN

A LIFE IN BLACK AND WHITE ... AND EVERYTHING IN BETWEEN
If you choose a single-color decor, the look will never go out of style. It lends itself to playing with contrasts and highlighting interior elements. Kitchen Board Shield Panels from Fibo is easy to keep clean and will withstand water splashes and temperature fluctuations.*

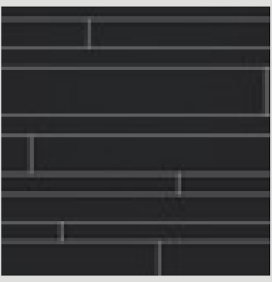
Monochrome



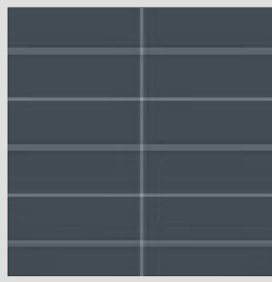
* Please note where the temperature is above 80°C/176°F eg. behind some gas stoves and cooktops, we recommend using a heat resistant decorative material (stainless steel is commonly used) or tempered glass product to protect the panel and avoid heat possibly dulling the panel. Please check with the manufacturer of gas appliance to determine required wall clearance for gas appliance installation to ensure temperatures don't exceed the level listed above where Fibo Kitchen Board is installed. Freestanding Ranges with a rear vertical control panel/display do not apply to this concern.



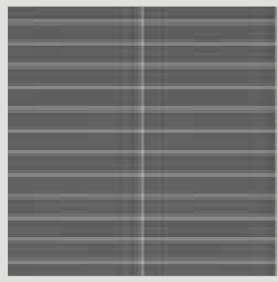
**2024 S
BLACK**



**2124 HG
NEW YORK BLACK**



**0433 EM
REYKJAVIK**

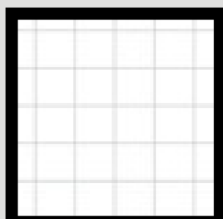


**4054 HG MILANO
ANTRASITE**

4091 SL WHITE SLATE



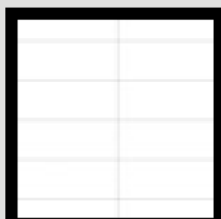
3091 HG
DENVER WHITE



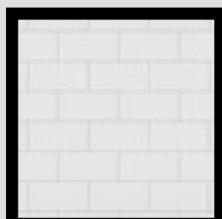
3091 HG
DENVER WHITE



3091 HG
DENVER WHITE



4091 SL
WHITE SLATE



0090 EM
SVALBARD



Clad the entire wall

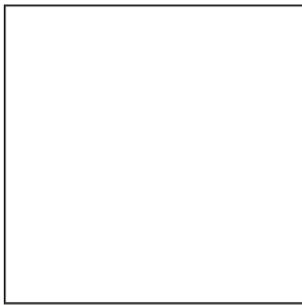
COMPLETE KITCHEN DESIGN!

Our Kitchen Board panels are also available in full lengths, enabling you to clad entire walls. Choose Fibo for style and protect your whole kitchen wall at the same time. If you have little space, this will help give the room a more spacious feel. Look at the alternatives at fibosystemusa.com

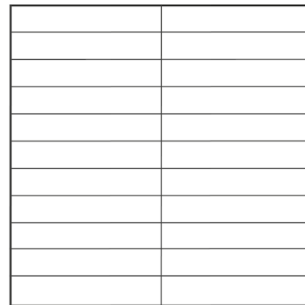


Our designs TIPS!

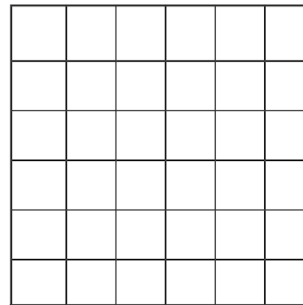
Different designs/milled patterns, provide variation to the different decors in our range of products. Color selection of grout lines will also accentuate or tone down the design. Leaf through the brochure to see what Kitchen Board panel decors are to be found in the different designs.



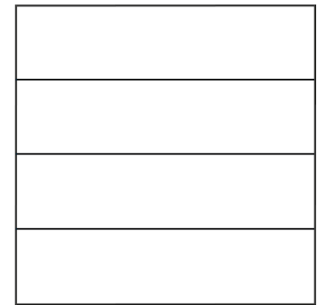
K00/F00
KM00/M00
NO GROUT LINE



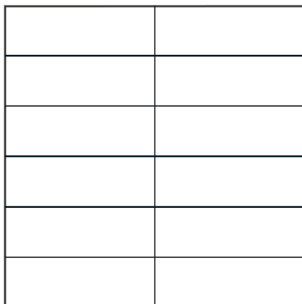
K03/F03
KM3005/M3005
12 X 2"



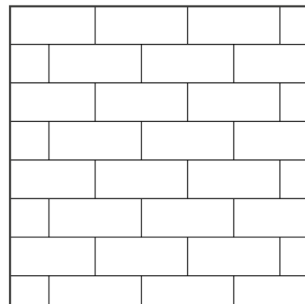
K40/F40
4 X 4"



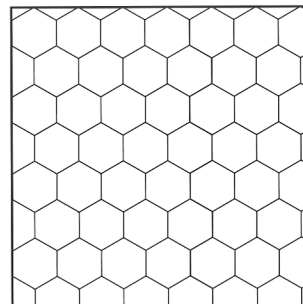
KM6015/M6015
24 X 6"



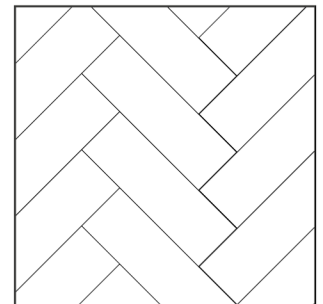
KM3010/M301
0 12 X 4"



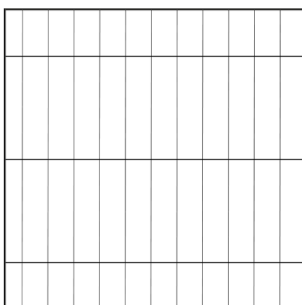
KM70/M70
SUBWAY TILE 6 X 3"



KM71/M7
1 HE X AG
ON



KM72/M72
HERRINGBONE



KM73/M73
STANDING BARS



KM99/M99
BROKEN SLATE

Collection Overview

Panel sizes | Standard Kitchen Board panel measures 24 x 18 inch but is also available in full length (24 x 94 inch). **Design designation** | KM/K corresponds to Kitchen Board size, while M/F corresponds to full length panel.



6230 HG
MIDNIGHT BLUE
Grout: 5/64 inch grey
Design **KM7 3 M73**



2024 S
BLACK
Grout: 5/64 inch grey
Design **KM7 1 M71**



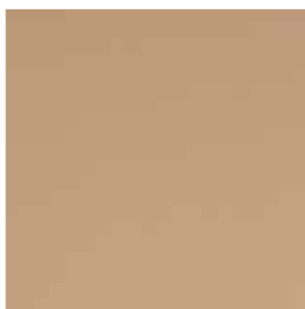
4002 S
TERRAZZO DARK
Grout: 5/64 inch dark anthracite
Design **KM7 2 M72**



4001 S
TERRAZZO LIGHT
Grout: 5/64 inch grey
Design **KM7 2 M72**



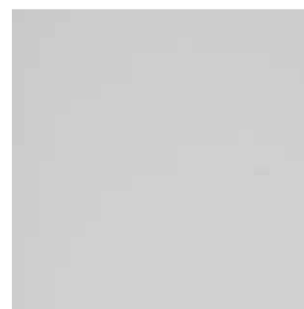
5003 MET
STEEL*
Grout: none
Design **K00 F00**



5006 MET
COPPER *
Grout: none
Design **K00 F00**



5004 MET
GOLD *
Grout: none
Design **K00 F00**



0192 S
TITAN
Grout: none
Design **K00 F00**



2272 S
BLACK MARBLE
Grout: none
Design **KM00 M00**



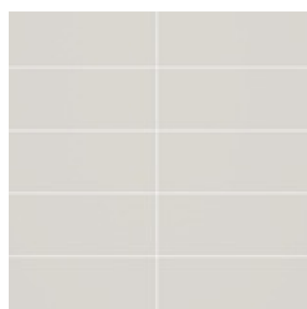
2273 S
WHITE MARBLE
Grout: none
Design **KM00 M00**



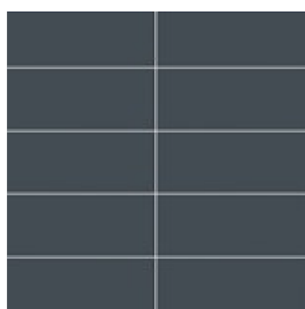
2278 S
GOLDEN B. MARBLE
Grout: none
Design **KM00 M00**



0194 EM
MARINA GREY OAK
Grout: 5/64 inch white
Design **KM601 5 M6015**



0090 EM
SVALBARD
Grout: 5/64 inch white
Design **KM301 0 M3010**



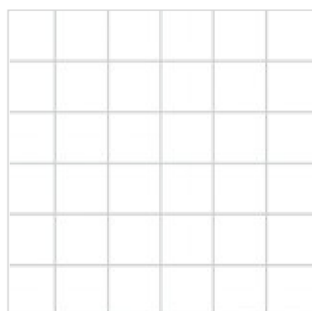
0433 EM
REYKJAVIK
Grout: 5/64 inch white
Design **KM301 0 M3010**



3091 HG
DENVER WHITE
Grout: 5/64 inch grey
Design **KM301 0 M3010**



4746 STN
GREY SAHARA
Grout: 5/64 inch white
Design **KM301 0 M3010**



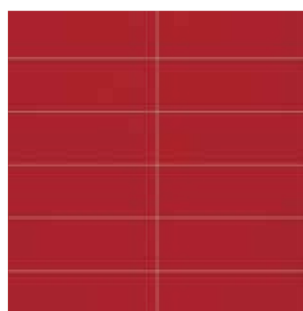
3091 HG
DENVER WHITE
Grout: 9/64 inch grey

Design
**K4
0
F40**



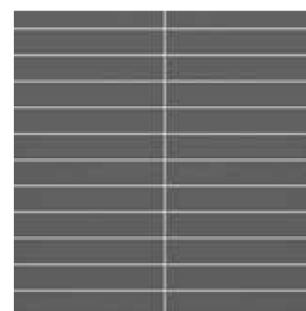
3091 HG
DENVER WHITE
Grout: 9/64 inch grey

Design
**K0
3
F03**



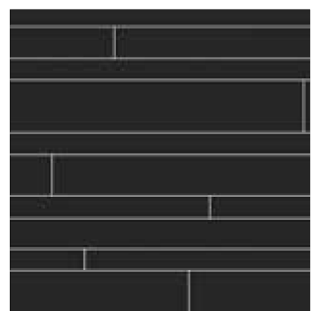
2101 HG
RED
Grout: 9/64 inch grey

Design
**K0
3
F03**



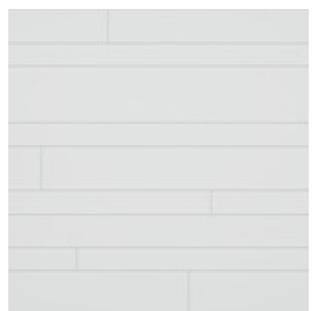
4054 HG
MILANO ANTRASITE
Grout: 9/64 inch grey

Design
**K0
3
F03**



2124 HG
NEW YORK BLACK
Grout: 5/64 inch grey

Design
**KM99
M99**



4091 SL
WHITE SLATE
Grout: 5/64 inch grey

Design
**KM99
M99**



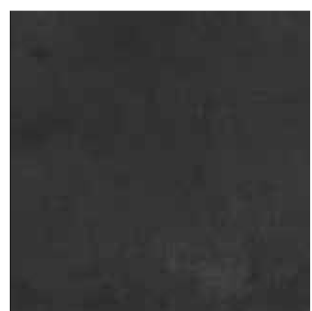
4091 SL
WHITE SLATE
Grout: 5/64 inch grey

Design
**KM7
0
M70**



0145 S
SOFT CEMENT
Grout: none

Design
**KM00
F00**



8056 STN
LENTINI DARK
Grout: none

Design
**KM00
M00**



8053 STN
LENTINI GREY
Grout: none

Design
**KM00
M00**



2204 S
CRACKED CEMENT
Grout: none

Design
**K00
F00**



1412 EM
AVALON PINE
Grout: none

Design
**KM00
M00**



2898 RU
SHABBY CHIC
Grout: none

Design
**K00
F00**

ABBREVIATIONS FOR SURFACE FINISHES

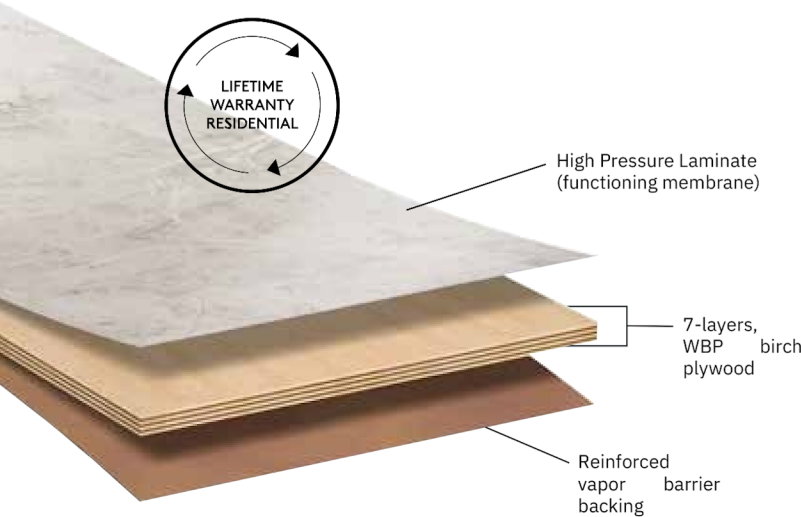
- HG = High gloss
- SL = Slate
- S = Silk
- STN = Stone
- EM = Extra Matt
- RU = Rustic
- MET = Metal

NOTE!

where the temperature is above 80°C/176°F eg. behind some gas stoves and cooktops, we recommend using a heat resistant decorative material (stainless steel is commonly used) or tempered glass product to protect the panel and avoid heat possibly dulling the panel. Please check with the manufacturer of gas appliance to determine required wall clearance for gas appliance installation to ensure temperatures don't exceed the level listed above where Fibro Kitchen Board is installed. Freestanding Ranges with a rear vertical control panel/display do not apply to this concern.

The smart way to transform your wall

Fibo's wall system is a quality Norwegian product, manufactured in contemporary designs, which is both cost-effective and easy to maintain.



Fibo | Warranty

Fibo wall system is approved according to the European technical approval guideline, ETAG022 and has a warranty of 25 years in commercial applications and a Limited LifeTime - residential. It gives you a solution that will last for decades and yet is affordable and easy enough to change on a whim for new colors or designs.



Fibo | The smart Aqualock solution

Fibo Aqualock: 100% Waterproof

With our patented Aqualock click system, Fibo panels are perfect for both refurbishment or new construction projects. The system makes the product unique and 100% waterproof, simplifies the assembly and minimizes joints. There's no need for a water vapor barrier or another waterproof membrane behind the panels.

To make the surface waterproof, all corners, joints, profiles and edges must be sealed.



UL 723 fire test
 CARB 93120 ATCM compliant
 TSCA Title VI compliant
 ASTM E1333 Emission test
 PROP 65

Walls built for life

The UN's Sustainable Development Goals (SDGs) provide a shared blueprint for peace and prosperity for people and planet, now and into the future. Fibo is guided by eight of the UN's SDGs which affects everything we do. From the raw materials we choose, to our manufacturing processes and even the transport firms we use to distribute our wall panels. Read more on [fibosystemusa.com](https://www.fibosystemusa.com)

SUSTAINABILITY

Fibo is a responsible company committed to sustainability. Our raw materials come certified renewable wood, and we take special responsibility for making products that last. All our materials are fully traceable, and we publish our Environmental, Social and Governance (ESG) report annually so you can follow our progress.

ENVIRONMENT

We continuously strive to reduce our environmental impact. We have reduced energy consumption during manufacturing, halved the amount of plastic used in packaging and reduced wastage in production. Our factory has the highest environmental standards and is certified according to ISO 14001:2015.

The building and construction industry accounts for almost 40% of global CO2 emissions. Our wall panel products have a lower carbon footprint than most tiles. Reduce your building's CO2 emissions. Choose Fibo.

QUALITY

Since 1952 we have been making wall solutions that are based on the world's strictest building standards. Our products are built to last and come with a limited lifetime warranty.



Get a good start at ShieldPanels.com

