



CIELO VERDE PHASE 5



by
Jacobson Homes

1684

Livable Area:

1684 Sq. Ft.

Footprint:

3 Bedrooms

1 3/4 Bath

3 Car Tandem Garage

Options:

Game Room/ Den

4th Bedroom

(with opt. 4th bedroom/ den the square
footage increases to 1903)

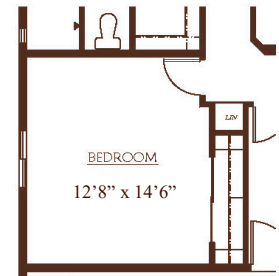
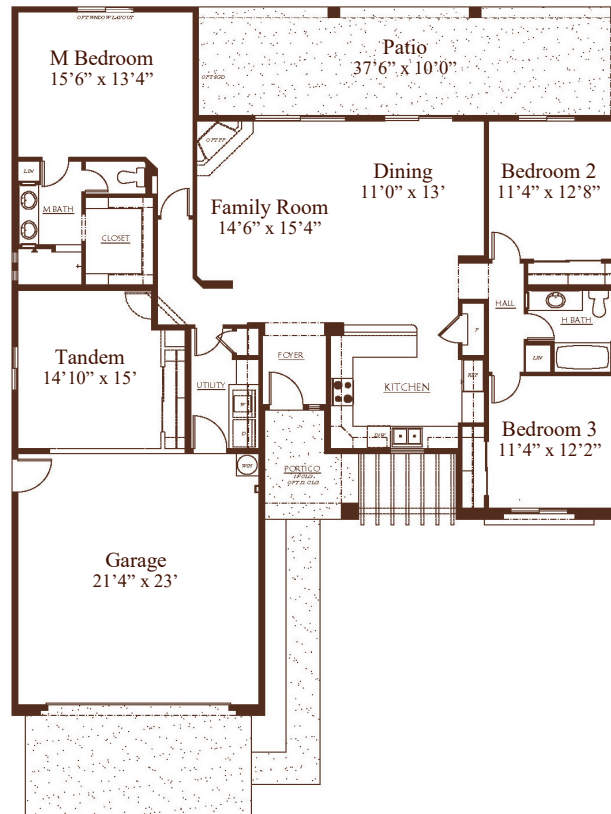
Opt. Master Bath Design

Fireplace

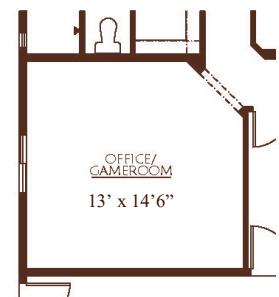
Standard Features:

Granite Kitchen tops

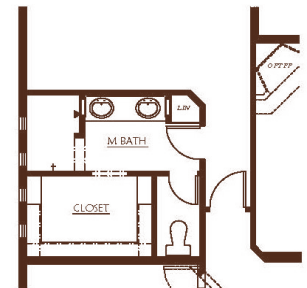
Snail Master Shower



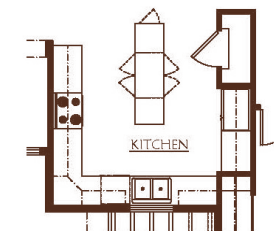
OPTIONAL BEDROOM



OPTIONAL GAMEROOM/OFFICE



OPTIONAL MASTER BATH



OPTIONAL KITCHEN ISLAND



All dimensions and floor areas are approximate. Prices and specifications are subject to change without notice, solely at builder's discretion. Elevation drawings are artistic interpretations of the appearance of the design, which may differ from the actual results when built. Each home to be constructed is subject to terms of approval of a building permit by the City/County of Yuma. Options and additions depicted are not available on all plans or lots.



Main: 1334 S 5 Ave. | Sales: 3310 S. Ave 8E, Suite #1 Yuma, AZ 85365 | Tel: 928-329-9000 | Fax: 928-314-9980
www. JacobsonHomesYuma.com



Last Updated 12/28/2021