



CIELO VERDE PHASE 5



by
Jacobson Homes

1963

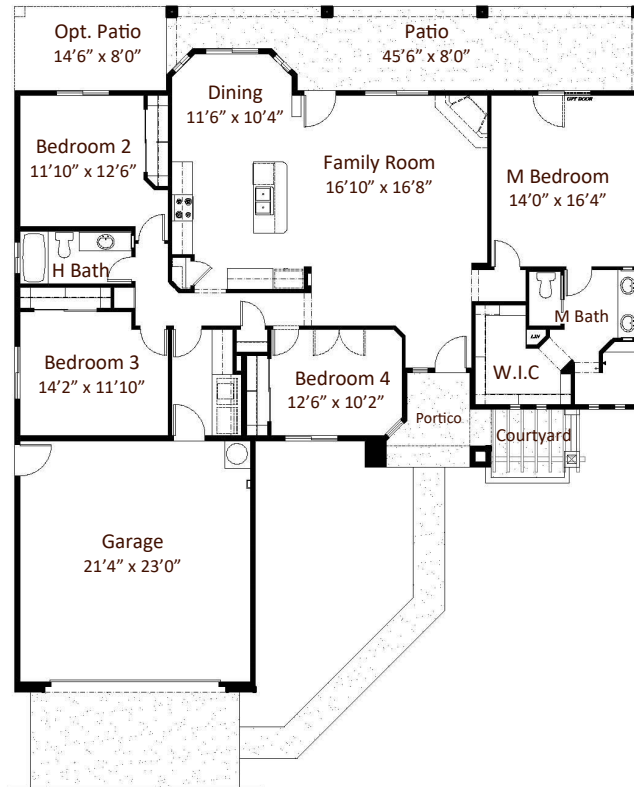
(side entry garage)

Livable Area:
1963 Sq. Ft.

Footprint:
4 Bedrooms
1 3/4 Bath
2 Car Garage

Options:
Office/ Den
Extended Patio

Standard Features:
Granite Kitchen tops
Ceiling Fans,
In all bedrooms & family room
Snail Master Shower
Tile everywhere,
except bedrooms & family room



All dimensions and floor areas are approximate. Prices and specifications are subject to change without notice, solely at builder's discretion. Elevation drawings are artistic interpretations of the appearance of the design, which may differ from the actual results when built. Each home to be constructed is subject to terms of approval of a building permit by the City/County of Yuma. Options and additions depicted are not available on all plans or lots.



Main: 1334 S 5 Ave. | Sales: 3310 S. Ave 8E, Suite #1 Yuma, AZ 85365 | Tel: 928-329-9000 |
[www. JacobsonHomesYuma.com](http://www.JacobsonHomesYuma.com)



Last Updated 12/28/2021