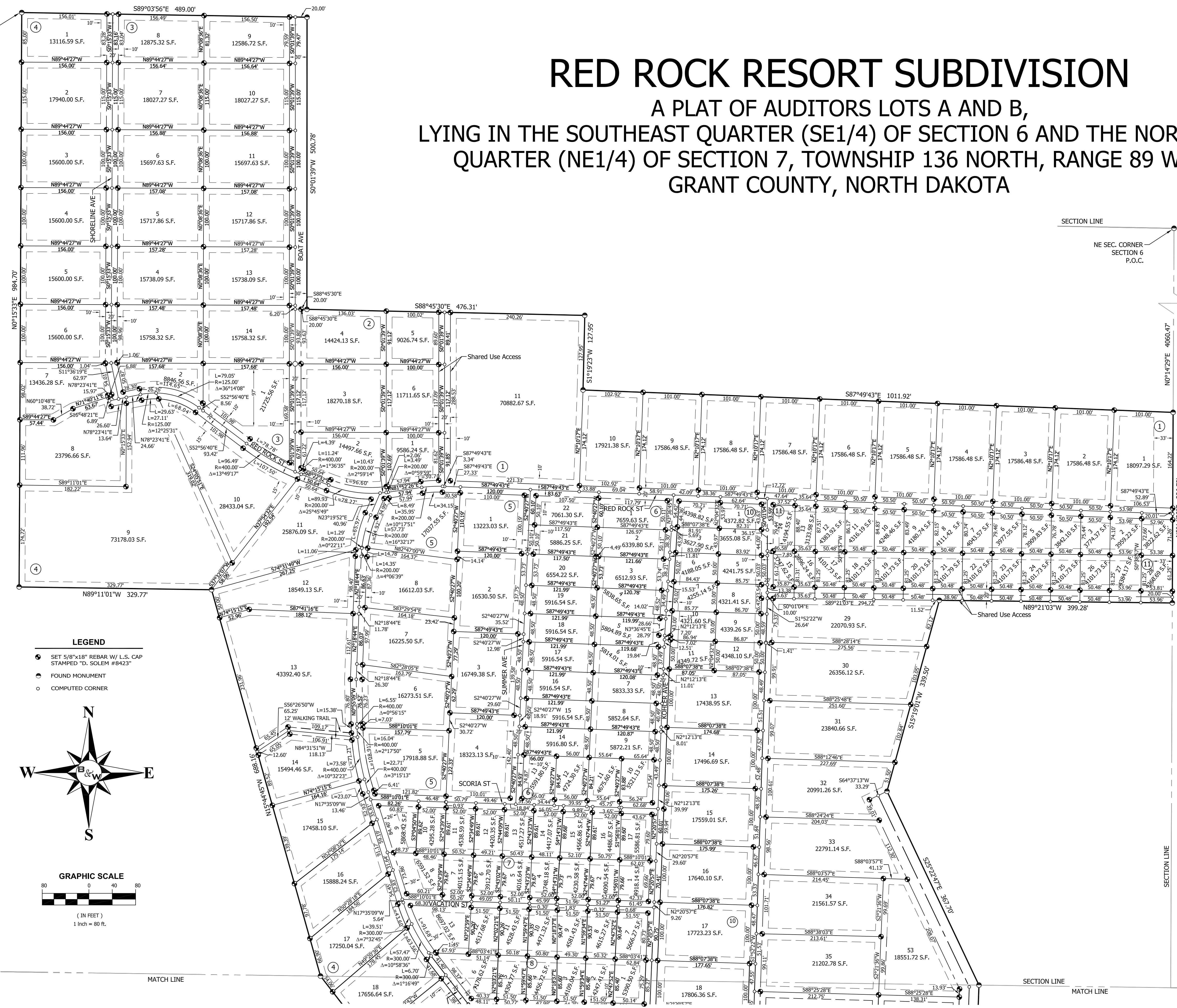


# RED ROCK RESORT SUBDIVISION

A PLAT OF AUDITORS LOTS A AND B,  
 LYING IN THE SOUTHEAST QUARTER (SE1/4) OF SECTION 6 AND THE NORTHEAST  
 QUARTER (NE1/4) OF SECTION 7, TOWNSHIP 136 NORTH, RANGE 89 WEST,  
 GRANT COUNTY, NORTH DAKOTA

ND STATE PLANE COORDINATES  
 SOUTH ZONE, INTERNATIONAL FEET  
 NAD 83  
 N: 351417.35  
 E: 1613393.55



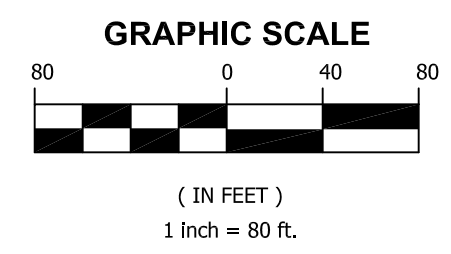
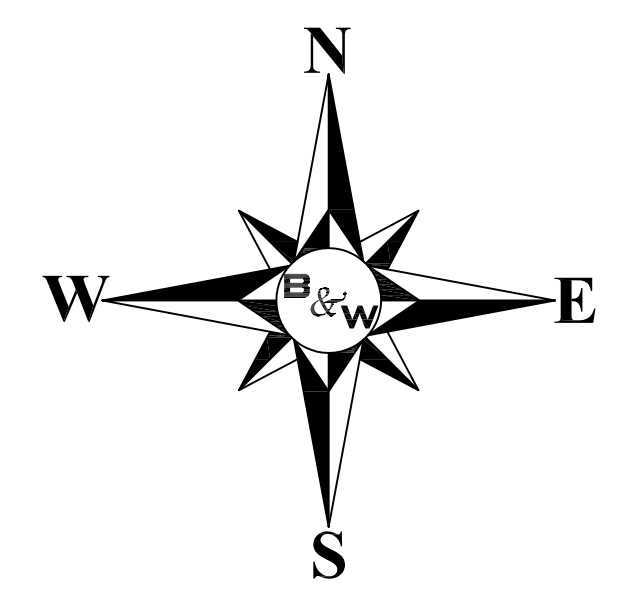
**OWNER**  
 KINGDOM INVESTORS, LLC  
 BOX 2222  
 BISMARCK, ND 58502-2222

**SURVEYOR**  
 DAYNE SOLEM, PLS  
 BARTLETT & WEST INC.  
 3456 EAST CENTURY AVE  
 BISMARCK, ND 58503

**NOTES**  
 BASIS OF BEARING:  
 NORTH DAKOTA STATE PLANE,  
 SOUTH ZONE  
 COORDINATE DATUM:  
 NORTH DAKOTA STATE PLANE  
 COORDINATE SYSTEM  
 NAD 83 SOUTH ZONE  
 ADJUSTMENT OF 1986  
 UNITS ARE INTERNATIONAL FEET  
 VERTICAL DATUM:  
 NAVD88  
 BEARINGS AND DISTANCES MAY VARY FROM  
 PREVIOUS PLATS DUE TO DIFFERENT  
 METHODS OF MEASUREMENT  
 LOT 33, BLOCK 4 IS A NON BUILDABLE LOT  
 AND IS DESIGNATED FOR UTILITY EASEMENT  
 AND ACCESS TO AUDITOR'S LOT D  
 ALL ROADWAY WIDTHS ARE 20' WITH THE  
 EXCEPTION OF 71st AVENUE  
 10' EASEMENT ON EACH SIDE OF LOT LINES  
 UNLESS OTHERWISE NOTED

**LEGEND**

- SET 5/8"x18" REBAR W/ L.S. CAP STAMPED "D. SOLEM #8423"
- FOUND MONUMENT
- COMPUTED CORNER



DATE: October 10, 2017 PAGE: 2 OF 3

Prepared By:  
**Bartlett & West**

3456 E. Century Ave. Bismarck,  
 North Dakota 58503  
 701-259-1110  
 FAX 701-258-1111  
 www.bartwest.com

MATCH LINE

SECTION LINE MATCH LINE