

Outlines of
Period
Flower Arrangement

by

Frances J. Hannay



Dutch and Flemish

FROM AN OLD PRINT

An elaborate grouping of gorgeous flowers and fruit intermingled with birds and butterflies represents the Dutch and Flemish periods of the 17th and 18th centuries

I. Dutch and Flemish (17th and 18th Centuries)

Containers

Alabaster urn
Pewter jar
Bronze—Ewer
Urn
Glass bowl (amber or green)
Pottery—Bowl
Churn
Silver bowl
Majolica pottery bowl
Basket
Metal utensils
Container usually subordinate to arrangement, as fruit and flowers festooning over edge of container in picturesque manner.

Backgrounds

Dark paneled walls
Marble
Fabrics—
Velvet
Tapestry
Brocade
Damask
Cloth of Gold

Plant Material

Anemone
Carnation
Celosia
Chrysanthemum
Crown Imperial
Dahlia
Daisy
Dried materials—
bittersweet
burrs
grain
seed pods
Foxglove
Fritillaria
Fruit—
grapes

lemons
oranges
peaches
pomegranates
quince

Hemerocallis
Hollyhock
Honeysuckle
Hyacinth
Iris
Lily
Marigold
Monkshood
Morning glory
Narcissus
Parrot tulip
Pentstemon
Peony
Poppy
Primrose
Ranunculus
Rhubarb leaves
Rose
Sunflower
Thistle
Tulip
Vegetables—
artichokes
cabbage
carrots
onions

Accessories

Acorns and chestnuts
Bird's nest and eggs
Butterflies, bees and other insects
Musical instruments
Science instruments
Hour glass
Books
Stuffed squirrels
Snail shell
Toadstool
Globe
Wine decanter, goblet
Loaf of bread and knife
Skull
Marble slab

Oysters
 Stuffed birds—
 Partridge
 Woodcock
 Basket of bright colored yarns

Appropriate Setting

Window ledge
 Credence (sideboard)
 Flemish chest on legs
 Flemish cupboard
 Scribanne (secretary-commode)
 Tables—
 Flemish
 Burgundian
 Writing
 Dressoir (open cupboard)
 Tablecloths of rich, dark colors
 were in common use

Arrangement Characteristics

Opulent mass arrangement
 Italian Renaissance influence
 Combination of flowers and fruit
 was common practice
 Fruit may be impaled on twigs
 Several centers of interest
 Profusion of plant material and
 numerous accessories
 Globular flowers popular
 Curve of poppy stems gave pleas-
 ing design
 The study of old flower paintings
 reveals curious use of turning
 flowers in order that the back
 side may be seen
 Flowers are often depicted with
 petals turned back (poppy)
 Vibrant harmony of color
 Warm scale of color generally
 predominated

Favored Colors

Lemon yellow
 Chrome-yellow
 Naples yellow
 Orange
 Brown

Wine red
 Vermilion
 Brick red
 Pink
 Apricot
 Cobalt blue
 Purple
 Apple green
 Sage green
 Jewel tones

Bibliography

Dutch and Flemish Flower
 Painters of the 17th and 18th
 Centuries
 Ralph Warner
 Mills and Boon, London, 1928
 German, Flemish and Dutch
 Schools of Painting
 Kugler
 John Murray, London, 1904
 Flowers and Still Life
 J.B. Charles
 Studio Publications, N. Y.
 Arranging Flowers Throughout
 the Year
 Carey and Merrill
 Dodd Mead Co., 1933
 Dutch Pottery and Porcelain
 W. P. Knowles
 Scribner's Sons
 Dutch and Flemish Furniture of
 the Middle Ages and Renais-
 sance
 Esther Singleton
 McClure-Phillips Co., N. Y.,
 1907
 Book of Furniture and Decoration
 Joseph Aronson
 Crown Publishers, 1936
 Elements of Interior Decoration
 Sherrill Whiton
 J. B. Lippincott, Philadelphia,
 1937
 Period Decoration
 Chandler Clifford
 Clifford and Lawton, N. Y.,
 1901
 Masters of Art Series
 Dutch and Flemish
 Bates and Guild Co., Boston,
 1901

II. French (17th and 18th Centuries)

Baroque Era	Louis XIV	1643-1715	Neo-Classic Era	Louis XVI	1774-1793
Rococo Era	Louis XV	1715-1774	Directoire	(Republic)	1795-1799
		Empire	(Napoleon)		1799-1815

Containers

Porcelain fruit basket with
 pierced sides
 Sevres porcelain—
 Compote
 Cornucopia
 Jardiniere
 Bowl with ball feet
 Crystal—
 Swan
 Urn
 Epergne
 Vase with dolphin base
 Vase with brass ormolu
 mounts and prisms
 Dresden and Meissen—
 Compote
 Vase
 Urn
 Bowl
 Bronze—
 Vase
 Urn
 Venetian glass—
 Vase
 Urn
 Compote
 Tole—
 Vase
 Urn
 Basket
 Alabaster—
 Urn
 Vase
 Silver—
 Fruit basket
 Epergne
 Bowl
 Capo di Monte urns

Backgrounds

Painted walls—
 Old ivory
 Pale grey
 Putty

Fabrics—

Satin
 Damask
 Tapestry
 Brocade
 Taffeta
 Toile de Jouy
 Silk, flowered and
 figured

Mirrors and murals

Plant Materials

Acacia
 Ageratum
 Aquilegia
 Anemone
 Begonia
 Bouvardia
 Carnation
 Camellia
 Cyclamen
 Daisy
 Delphinium
 Easter lily
 Forget-me-not
 Freesia
 Fuchsia
 Grape leaves and tendrils
 Honeysuckle
 Hydrangea
 Iris
 Jasmine
 Jonquil
 Larkspur
 Lilac
 Lily-of-the-valley
 Marigold, pale yellow
 Myrtle
 Narcissus
 Pansy
 Parrot tulip
 Peony
 Petunia
 Plumbago
 Poppy
 Primrose



French

FRED WADDELL

Elegance and formal balance distinguish this outstanding French arrangement in an alabaster urn of classic form. Arrangement by Mrs. John S. Loomis

- Ranunculus
- Roman hyacinth
- Rose
- Salvia, blue
- Scabiosa
- Stock
- Sweet pea
- Tulip
- Viola
- Violet
- Wheat

Accessories

- Dresden figure or group Cupid and Watteau type
- Porcelain birds or flowers
- Decorative boxes of painted enamel or Sevres—
 - Snuff
 - Patch
- Jewel case
- Miniature
- Fan or enameled opera glasses
- Marble or bronze—
 - Bust
 - Statue
- Bonbonnier
- Ornamental clock
- Decorative hand mirror
- Baroque angels—
 - Plaster gilt
 - Carved wood
- Scent bottles
- Candlesticks and candelabra—
 - Dresden
 - Sevres
 - Ormolu
- French bisque figurine
- Tole jars or trays
- Pomade jars
- Nosegay tied with ribbons
- French print

Appropriate Setting

- Niche
- Tripod pedestal (Lampadaire)
- Commode
- Desk
- Mantel

Tables—

- Marble topped console
- Ormolu trimmed
- Bouille (tortoise veneer)
- Poudreuse
- Lacquered
- Inlaid
- Brass galleried
- Bleached and fruit wood
- Gilt or black and gilt
- Glass enclosed shelf

Arrangement Characteristics

- Least weighty of all mass arrangements
- Classic elegance and formal balance
- Height greater than width
- Individual beauty of flowers stressed
- Harmony rather than contrast
- Clever use of dark accent color at base and carried up through arrangement
- Soft coloring resembled Aubusson and Savonnerie rugs
- Cool colors often combined with pale yellow
- Exquisite color harmony combined with one dominant tone
- Spike flowers and trailing tendrils used in graceful manner
- Porcelain vases and urns of classical lines, usually with handles on sides, often decorated with pastoral scenes or portraits and gilt trimmed
- Line considered subordinate to color

Favored Colors

- Yellow
- Buff
- Citron
- Salmon
- Dusty pink

"Pompadour" pink
 Mauve
 Turquoise blue
 "Sevres" blue
 Sky blue
 Delft blue
 Lavender
 Purple
 Violet
 Wine red
 Green

Bibliography

Arrangement of Flowers
 Mrs. Walter Hine
 Scribner's Sons, N. Y., 1933

Arranging Flowers Throughout
 the Year
 Carey and Merrill
 Dodd Mead and Co., 1933

Flowers,—Their Arrangement
 Gregory Conway
 Alfred A. Knopf Co., N. Y.,
 1940

Flower and Table Arrangements
 Esther L. Murphy
 Laughing Dragon Press, De-
 troit, 1935

Flower Arrangement
 Rockwell and Grayson
 Macmillan, N. Y., 1935

French Painting
 Wilenski
 Hale, Cushman and Flint,
 1934

Period Decoration
 C. R. Clifford

Clifford and Lawton, N. Y.,
 1901

Book of Furniture and Decora-
 tion
 Joseph Aronson
 Crown Publishers, N. Y., 1936

Little Books on French Furniture
 4 vol.
 R. de Felice translated by F.
 M. Atkinson
 William Heineman, Ltd., Lon-
 don

Practical Book of Period Furni-
 ture
 Eberlein and McClure
 J. B. Lippincott Co. Philadel-
 phia, 1937

Elements of Interior Decoration
 Sherrill Whiton
 J. B. Lippincott Co. Philadel-
 phia, 1937

Decorative Styles and Periods
 Helen C. Candee
 Frederick Stokes and Co.,
 1906

The Book of Pottery and China
 Warren E. Cox
 Crown Publishers, N. Y., 1944

French Interiors, Furniture and
 Decoration During the 17th
 and 18th Centuries
 T. A. Strange
 Charles Scribner's Sons, N. Y.,
 reprint

French Floral Prints:
 Redoute
 Provost
 Bessa

III. Colonial Flower Arrangement (17th Century)

Pre-Revolutionary

Early American 1607-1720

Containers

Pewter—
 Bowl
 Ewer
 Tankard
 Cannister
 Teapot
 Mug

Copper—
 Kettle
 Bowl
 Pitcher

Brass—
 Kettle
 Ewer

Salt glaze—
 Pitcher
 Bowl
 Dish with lid

Chinese Porcelain—
 Bowl
 Ginger jar

Dutch Delft ware—
 Mug
 Pitcher

Earthenware pottery—
 Jug
 Bowl
 Baking dish
 Bean pot

Early flint glass bottles

Wooden bowl

Gourd bowl

Iron pot

Baskets made of bark

Backgrounds

Woodwork—
 Natural pine paneling
 White painted

Fabrics—
 Homespun linen
 India prints
 Tree of Life pattern

Crewel embroidery
 Turkey work
 Damask
 Chintz

Plant Material

Artemisia
 Aster
 Bee Balm
 Blackeyed Susan
 Canna
 Chrysanthemum
 Clove pink
 Clover
 Coreopsis
 Cornflower
 Daisy
 Daylily
 Dried materials—
 bittersweet
 honesty
 cattail
 rose hip
 everlasting
 corn
 gourd

Fern
 Feverfew
 Flax
 Fruit and fruit blossoms
 Foxglove
 Gaillardia
 Geranium
 Goldenrod
 Hollyhock
 Honeysuckle
 Lupine
 Mallow
 Marigold
 Maple leaves
 Mertensia
 Monkshood
 Nasturtium
 Peony
 Petunia
 Poppy
 Queen Anne's lace
 Roses, moss and wild single type



Colonial

MATTIE EDWARDS HEWITT

A charming arrangement of dried materials in an earthenware bean-pot is typical of the American Colonial Period of the 17th Century. Arrangement by Mrs. Karl A. deGersdorff

Rosemary
Sunflower
Sweet William
Tansy
Trillium
Trumpet vine
Verbena
Wallflower

Accessories

Pewter—
Candlesticks
Sconces
Snuffer
Oil lamp
Ink well
Sand shaker
Snuff box
Spoon holder
Plate
Platter
Porringer
Mold

Bayberry candles

Brass—
Candlesticks
Snuffer
Pestle and mortar
Plate
Platter

Quilled pen
Hour Glass
Sampler or needlework picture

Salt glaze—
Salt cellar
Animal figures

Copper—
Kettle
Plate

Dutch Delft ware tiles
Early blown glass
Historical flasks
Tuzzie-muzzies (nosegays)

Appropriate Settings

Queen Anne card table (Basset)
Mantel shelf
Welsh dresser
Tudor court cupboard
Dower chest (Hadley)

Candle stand

Tables—

Cricket (three-legged)
Butterfly (maple)
Duck foot
Jacobean gate-leg
Refectory (oak)
Hutch
William and Mary

Arrangement Characteristics

Informal mixed bouquets
Bright complimentary colors
Contrast rather than harmony
Considerable simplicity and charm
Sweet scented herb foliage—
Lemon verbena
Rose geranium
Southernwood
Costmary
Mints

Dull grey pewter provided an excellent foil for bright tones of garden and field flowers

Trade with the Orient introduced Chinese porcelains, textiles and plants to Colonists

Colonial table arrangements combining fruits, vegetables and nuts are considered traditional Thanksgiving decorations

East India trade brought prints, ceramics and embroideries from Persia, India and China which furnished new ideas for crewel work and combinations of colors that were different from the English precedent

Favored Colors

Red
Vermilion
Chinese red
Rose
Wagon blue
Delft blue
Lavender

Purple
Orange
Saffron yellow
Colonial yellow
Apple green
Brown

Bibliography

American Flower Arrangement
Opal Scarborough
G. B. Putman, Inc., Hollywood,
Cal., 1939

Arranging Flowers Throughout
the Year
Carey and Merrill
Dodd Mead Company, 1933

Home Life in Colonial Days
Alice M. Earle
Macmillan Company, 1903

The Homes of Our Ancestors as
Shown in the Metropolitan
Museum
Halsey and Tower
Doubleday, Doran and Com-
pany, 1925

Colonial Interiors
L. French, Jr.
William Helburn, Inc., N. Y.,
1923

Colonial Interiors
Edith T. Sale
William Byrd Press, Rich-
mond, 1927

Furniture of Olden Time
Frances C. Morse
Macmillan and Company,
1902

Decoration in England from
1660-1770
Francis Leygon
Charles Scribner's Sons, 1927

Furnishing the Colonial and Fed-
eral House
Nancy McClelland
J. B. Lippincott Co., Philadel-
phia, 1936

Elements of Interior Decoration
Sherrill Whiton
J. B. Lippincott, Philadelphia,
1937

Book of Furniture and Decoration
Joseph Aronson
Crown Publishers, 1936

Early American Pottery and
China
G. Spargo
The Century Company, N. Y.,
1926

American Pewter
J. B. Kerfoot
Houghton Mifflin Co., N. Y.,
1924

Chats on Old Copper and Brass
F. W. Burgess
Frederick Stokes Co., N. Y.,
1914

Old Dutch Pottery and Tiles
Neurdenburg and Rockham
Himebaugh and Browne, Inc.,
1939

Early American Glass
Rhea M. Knittle
Century Company, N. Y.,
1927

IV. Federal Flower Arrangement

(Late 18th and Early 19th Centuries)

Thomas Jefferson's Era
Post-Revolutionary

American Federal Period 1780-1830
From George Washington's Inauguration

Containers

Sandwich pressed glass—
Vase
Fruit dish
Pitcher

Steigel and Wistar blown glass—
Vase
Bowl on standard
Celery vase

Paul Revere Silver—
Bowl
Teapot

Spode—
Vase
Tureen

Staffordshire—
Vase
Compote

Wedgwood—
Urn
Vase
Bulb dish

Crown Derby—
Urn
Pierced fruit bowl

Worcester—
Vase
Pitcher
Cornucopia
Compote

Chinese Lowestoft bowl

Sheffield silver—
Epergne
Cake basket
Wine cooler

Lustre ware—
Pitcher
Bowl

Japanned chestnut jar

Backgrounds

- Painted Walls—
Grey
Moss green
Buff

Paneled walls

Scenic wall paper—Historical

Fabrics—
Damask
Brocatelles
India prints
Crewel embroideries
Satin
Velour
Calico
Flowered and printed
silks

Plant Material

Anemone
Aster
Bleeding heart
Candytuft
Canterbury bell
Carnation
Chrysanthemum
Crown Imperial
Cornflower
Dahlia
Daylily
Delphinium
Dogwood
Easter lily
Forget-me-not
Foxglove
Fruit blossoms
Fuchsia
Gladiolus
Hollyhock
Hyacinth
Iris



Federal

A formal mass arrangement in a decorative urn, with appropriate accessories reflects the American Federal Period of the late 18th and early 19th Centuries. Arrangement by Mrs. Edgar A. Knapp

- Jonquil
- Larkspur
- Lilac
- Lily-of-the-valley
- Marguerite
- Marigold
- Narcissus
- Pansy
- Peony
- Petunia
- Phlox
- Poppy
- Ranunculus
- Roses
- Primrose
- Salvia, blue
- Snapdragon
- Strawflower
- Striped grass
- Stock
- Sunflower
- Sweet William
- Tiger lily
- Tulip

Accessories

- Classic figurines
- Silhouette or miniature
- Snuff box
- Sandwich glass—
 - Lamp
 - Sweetmeat dish
 - Salt cellar
 - Historical bottle
- Shelf clock
- Girandole candlesticks
 - Candalabra
- Wedgwood—
 - Platter
 - Jar
 - Medallion
- Toby jug
- Astral lamp with prisms
- Chinese Lowestoft tea caddy
- Hurricane globes
- Sheffield silver—
 - Candlesticks
 - Candalabra
- Paper weight

- Staffordshire figures or group
- Glass painting, historical
- Clipper ship model
- Mirrors—
 - Concave
 - With painting at top
- Steigel glass bottle
- Flower print
- Illuminated certificate of baptism or marriage
- Powder flask

Favored Colors

- "Wedgwood" Blue
- Cobalt blue
- "Worcester" blue
- "Adam" green
- "Lowestoft" pink
- Chinese red
- Lemon yellow
- Apricot
- Terra cotta
- Rose
- Cherry red
- Wine red
- Lavender
- Purple

Arrangement Characteristics

- Mass arrangement with formal balance
- Prevailing influence was French rather than English
- Fruits were used in combination with flowers and foliage, particularly in epergnes
- Height greater than width
- Vases and ornaments of classic form predominated
- Individual beauty of flowers stressed
- Martha Washington is credited with introducing formal flower arrangement in America. Mt. Vernon was known for its beautiful gardens and George

Washington was responsible for the importation of many foreign plants and trees
Harmony of color was more important than vivid contrast

Appropriate Setting

Tripod candlestand
Sideboard
Mantel
Desk
Chest, serpentine front
Tables—
Sofa, Duncan Phyfe
Card, pedestal
Sewing
Gate-leg
Kidney
Tea, carved pedestal
Chinese lacquer
Quadrille (game)
Nest of tables

Bibliography

The Arrangement of Flowers
Mrs. Walter Hine
Macmillan, N. Y., 1933
American Flower Arrangement
Opal Scarborough
G. B. Putman, Hollywood, Cal., 1939
Flower Arrangement
Rockwell and Grayson
Macmillan Co., N. Y., 1935
Arranging Flowers Throughout the Year
Carey and Merrill
Dodd Mead and Co., 1933
Flowers—Their Arrangement
Gregory Conway
Alfred M. Knopf, N. Y., 1940
New Arrangements of Flowers
Mrs. Walter Hine
Macmillan, 1936
Furnishing the Colonial and Federal House

Nancy McClelland
J. B. Lippincott Co., Philadelphia, 1936
Elements of Interior Decoration
Sherrill Whiton
J. B. Lippincott Co., 1937
American Furniture and Decoration, Colonial and Federal
Edward S. Holloway
J. B. Lippincott, 1928
Furniture of Our Forefathers
Esther Singleton
Doubleday, Page and Co., 1916
Early American Furniture
C. O. Cornelius
Century Company, N. Y., 1926
Furniture Masterpieces of Duncan Phyfe
C. O. Cornelius
Doubleday, Page and Co., 1922
Decorative Styles and Periods
Helen C. Candee
Frederick Stokes Co., 1906
An Outline of Period Furniture
Katharine M. Kahle
Putman, 1929
The Book of Pottery and Porcelain
Warren E. Cox
Crown Publishers, N. Y., 1944
The Homes of Our Ancestors as shown in the Metropolitan Museum
Halsey and Tower
Doubleday, Doran Co., N. Y., 1925
Period Decoration
C. R. Clifford
Clifford and Lawton, N. Y., 1901
American Glass
George and Helen McKearin
Doubleday, Page and Co., 1941
Early American Silver
C. L. Avery
D. Appleton - Century Co., 1930

V. Georgian Flower Arrangement 18th Century

AMERICAN GEORGIAN
WILLIAMSBURG ERA 1720-1780
ENGLISH GEORGIAN

George I 1714-1727
George II 1727-1760
George III 1760-1820

Containers

Classic designs and forms
Sheffield silver—
Wine cooler
Cake basket
Epergne
Bristol glass—
Urn
Vase
Waterford glass fruit bowl
Chinese Lowestoft—
Bowl
Ginger jar
Chinese Crackle porcelain vase
Worcester fruit cooler
Spode—
Jardiniere
Pitcher
Wedgwood—
Urn
Vase
Bulb dish
Chelsea—
Compote
Tureen
Vase
Crown Derby—
Compote
Pierced fruit basket
Lustre ware—
Copper and silver
Bowl
Pitcher
Mug
Staffordshire—
Compote
Vase
Willow ware—
Tea caddy
Tureen
Apothecary jar

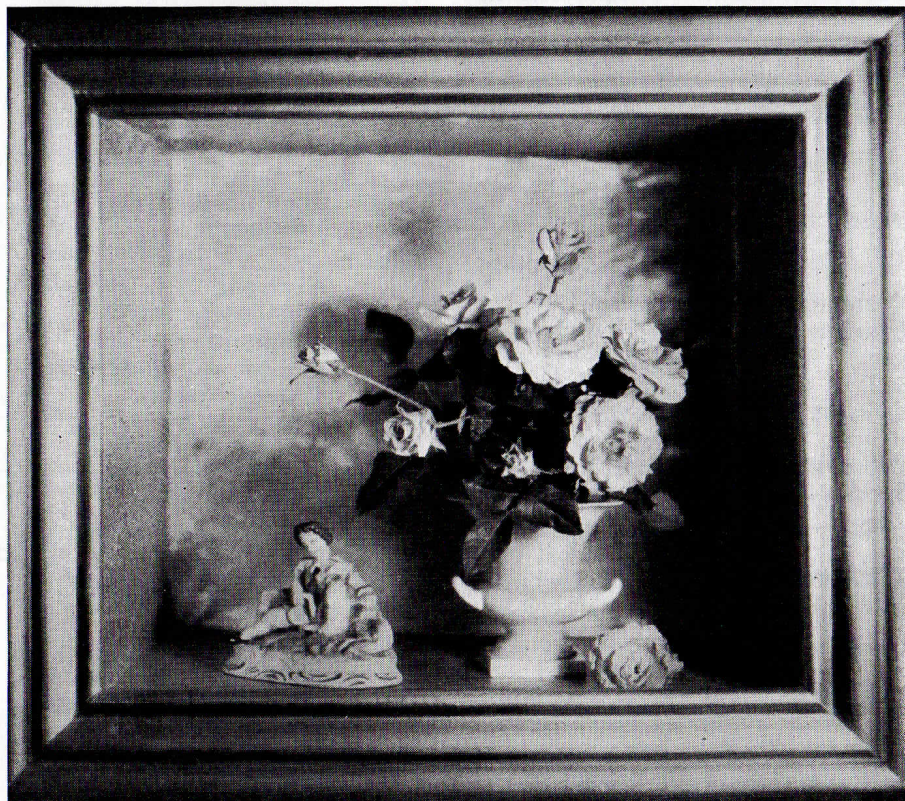
Backgrounds

Painted walls—

White
Grey
Dusty green
Pale blue
Pale Pink
Wall paper—
Chinese
Marbled
Landscape
Fabrics—
Damask
Velvet
Chintz
Crewel embroideries
Chinese brocade

Plant Material

Anemone
Babysbreath
Blackberry flowers, fruit and foliage
Candytuft
Carnation
Chrysanthemum
Clover
Cornflower
Crocus
Crown Imperial
Dahlia
Daylily
Delphinium
Dried Materials—
Rose hips
Strawflower
Seed pods
Wheat
Easter lily
Fruit blossom.
Foxglove
Gladiolus
Honeysuckle
Hyacinth
Iris
Larkspur
Lilac
Lupine
Marguerite



Georgian

FRED WADDELL

A "still life" picture in the 18th Century Georgian manner, using roses in a porcelain urn with an old Staffordshire figurine as an accessory. The background is of old Chinese gilt paper. Arrangement by Mrs. Allen B. Hannay

Marigold
 Mignonette
 Muscari
 Narcissus
 Pansy
 Peony
 Pentstemon
 Petunia
 Pomegranate, flowers and fruit
 Primrose
 Queen Anne's lace
 Ranunculus
 Roses, old fashioned types
 Salvia, blue
 Snapdragon
 Statice
 Sunflower
 Stock
 Tulip
 Veronica

Accessories

Miniatures and silhouettes
 Chinese porcelain—
 Plates
 Figures
 Cup, saucer
 Ginger jar
 Tea caddy
 Inkwell
 Chinese horses
 Teakwood stand
 Sheffield silver—
 Candlesticks
 Candalabra
 Crystal—
 Candalabra with prisms
 Candlesticks
 Hurricane globe
 Alabaster box
 Enameled boxes—
 Snuff
 Patch
 Staffordshire—
 Figurine or group
 Shepherd, milkmaid
 Animals, birds
 Candlesticks
 Meissen figurines
 Wedgwood—

Statuettes
 Medallions

Toby jug
 Lustre—
 Mugs
 Pitcher
 Sampler and embroidery picture
 Mirrors—
 Adam designs
 Chinese Chippendale
 Carved gilt
 Mahogany, gilt trim

Favored Colors

"Chelsea" green
 "Staffordshire" blue
 "Wedgwood" blue
 "Worcester" blue
 Chinese yellow
 Cobalt blue
 Mauve
 Naples yellow
 Terra cotta
 Rose
 Russet
 Copper
 Tangerine
 Salmon
 Apricot

Appropriate Setting

Niche
 Night stand
 Tripod candle stand
 Corner cupboard
 Bowfront chest
 Lowboy
 Revolving book stand
 Tables—
 Pembroke
 Drum (leather topped)
 Tier, Hepplewhite
 Piecrust
 Card, lift top
 Tea, Chippendale
 Serving, Sheraton
 Chinese lacquer
 Tripod tilt top, Chippen-

dale
Nest of tables

Arrangement Characteristics

Mass Arrangement with formal balance
Somewhat triangular in form with perfect symmetry
Less delicate than French type of arrangement
Color harmony often monochromatic
Epergnes arranged with combinations of flowers and fruit in harmonizing tones and qualities
The arrangement, as a whole, was more important than stressing the beauty of the individual flowers
Accessories were used to heighten or repeat the color of plant material or container
Handles on urns added formality to arrangements
Old floral paintings provide many lessons in the taste of this period

Bibliography

The Arrangement of Flowers
Mrs. Walter Hine
Scribner's Sons, N. Y., 1933
Arranging Flowers Throughout the Year
Carey and Merrill
Dodd Mead and Co., 1933
Flowers—Their Arrangement
Gregory Conway
Alfred M. Knopf, N.Y., 1940
Flowers in House and Garden
Constance Spry
Putman, 1937
Design in Flower Arrangement
John T. Arms
Macmillan, 1937
Flower Arrangement
Rockwell and Grayson

Macmillan, 1935
The English Interior
A. J. Stratton
B. T. Batsford, Ltd., London, 1920
English Decoration and Furniture of the Later 18th Century
Margaret Jourdain
Scribner's Sons, 1922
Period Decoration
C. R. Clifford
Clifford and Lawton, N. Y., 1901
English Furniture from Gothic to Sheraton
Herbert Ciscinsky
Grand Rapids, 1929
The Old World House, 2 vol.
Herbert Ciscinsky
A. and C. Black, Ltd., London, 1924
The Homes of Our Ancestors as shown in the Metropolitan Museum
Halsey and Tower
Doubleday, Doran Company, N. Y., 1925
The Book of Pottery and Porcelain
Warren E. Cox
Crown Publishers, N. Y., 1944
The Collector's Manual
H. Hudson Moore
Frederick Stokes Co., N. Y., 1906
Decoration, Past, Present and Future
Sarah M. Lockwood
Doubleday, Doran Co., N. Y., 1934
Old Silver
Seymour Wyler
Crown Publishers, N. Y., 1937
Furniture and Decoration in England During the 18th Century
J. A. Heaton
J. Bumpus, London, 1892
Old Flower Prints of Robert Turner
Twelve Months of Flowers
Twelve Months of Fruit

VI. Victorian Flower Arrangement 19th Century

VICTORIAN ERA 1830-1901

Containers

Parian ware—
Hand vase
Cornucopia
Pitcher
Bohemian Glass Lustre—
Vase with prisms
Rockingham—
Vase
Compote
Belleek—
Vase
Basket
Shell
Ironstone China—
Tureen
Hexagonal dish
Haviland china vase
March Stand
(Compound trumpet epergne)
Silver—
Spoon warmer
Cake basket
Victorian glass—
Blown and Pressed
Hobnail
Cranberry
Opal
Satin
Milk
Amber
Peachblow
Cut
Tiffany Favrite
Clinchy (painted)

Rose bowl
Pickle jar
Glass dome
Most China vases of this period were deeply gilded, of ornate shape and form, and usually had feet or bases

Backgrounds

Wall paper—
Figured

Flowered
Landscape
Fabrics—
Velvet
Plush
Horsehair
Satin
Brocade

Plant Material

Amaryllis
Anemone
Bleeding heart
Bluebell
Bouvardia
Caladium
Camellia
Carnation
Cineraria
Clover
Cockscomb
Cornflower
Coreopsis
Crown Imperial
Dahlia
Daisy
Easter lily
Eucharis lily
Forget-me-not
Foxglove
Freesia
Fritillaria
Fuchsia
Gardenia
Geranium
Godetia
Heather
Heliotrope
Hyacinth
Immortelle
Ixora
Jasmine
Lilac
Lobelia
Magnolia
Marigold
Mignonette



Victorian

MATTIE EDWARDS HEWITT

An opulent arrangement using bold, richly colored flowers of many varieties in an ornate gilt vase is characteristic of the Victorian Period. Arrangement by Mrs. John Worth Edmonds

Morning glory
Narcissus
Pansy
Passion Flower
Phlox
Roses
Salpiglossis
Salvia, blue and red
Stephanotis
Stock
Tiger lily
Thistle
Tuberose
Tulip
Verbena
Vinca
Violet
Water lily

Accessories

Daguerreotype
Album or prayer book
Fan or Valentine
Paper weights—
Mille-fiori
Baccaret
Clinchy
Parian Ware—
Portrait bust
Figure
Miniature vase, etc.
Box (with sleeping child
on lid, etc.)
Rockingham bisque figurine
Staffordshire figurine or group—
Pastoral and domestic
Animals and birds
Historical and Scotch
Cottage Pottery (chimney orna-
ments)—
Poodle, spotted dog, cat
Cow creamer
Cottage, castle, etc.
Banks
Mother-of-pearl boxes—
Sewing
Music

Glass slipper, hat, etc.
Currier and Ives prints
Baxter prints

Blackamoor figure
Decorated lamp
Papier-mache tray
Candlesticks
Cup and saucer
Illuminated certificates of bap-
tism and marriage

Appropriate Setting

Pedestal
What-not (Etagere)
Melodeon
Mantel
Tables—
Marble topped
Circular, with fringed
cloth to floor
Bedside or night
Tea, spool-turned
Card, lift top

Arrangement Characteristics

Most compact of all mass ar-
rangements
Globular or circular in form
Color contrast rather than har-
mony
Opulent and somewhat heavy
Bold, rich colors
All white arrangements very
popular
Wider than height was usual
Arrangements massed so that
individual beauty of flowers
was lost
Numerous varieties of flowers
Mantel arrangements large,
placed flat against wall
Aquatic bouquets
Nosegays concentric in design
Thick petaled flowers popular
When fruit was used, it was not
combined with flowers, but
was arranged with grape
leaves on separate compotes or
baskets

Stiff striped grasses, grains, Dusty Miller, ivy and ferns were used as edging for bouquets or vases

Favored Colors

Blush pink
Sapphire blue
Ochre yellow
Lavender
Violet
Purple
Magenta
Mulberry
Carmine
Vermilion
Claret red
Emerald green
Yellow chartreuse
"Staffordshire" pink
Rose
Deep blue
Brown

Bibliography

British Floral Decoration
R. F. Felton
Adam and Charles Black, London, 1910
Arranging Flowers Throughout the Year
Carey and Merrill
Dodd Mead Co., 1933
Flowers—Their Arrangement
Gregory Conway
Alfred M. Knopf, 1940
Arrangement of Flowers
Mrs. Walter Hine
Macmillan, 1933
Flower and Vase
Anne Lamplugh
Country Life, 1929
Flower Arrangement
Rockwell and Grayson
Macmillan, 1935
Flower and Table Arrangements
Esther L. Murphy

Laughing Dragon Press,
Detroit, 1935

Flowers in House and Garden
Constance Spry
Putman, 1937

Victorian Glass
Ruth Webb Lee
Framingham Center, Mass.,
1939

Chats on English Earthenware
Arthur Hayden
Frederick Stokes Co., 1903

English Pottery and Porcelain
Edward Downman
L. Upcott Gill, London, 1896

Old China Book
H. Hudson Moore
Frederick Stokes Co., 1903

Period Decoration
Chandler Clifford
Clifford and Lawton, N. Y.,
1901

Old Glass—European and American
H. Hudson Moore
Frederick Stokes Co., 1924

The Book of Furniture and Decoration
Joseph Aronson
Crown Publishers, N. Y., 1936

The Handbook of Popular Antiques
Katharine McClinton
Random House, N. Y., 1945

Decorative Styles and Periods
Helen C. Candee
Frederick Stokes Co., 1906

Antiques for the Home
Alice R. Rollins
Harper Bros., N. Y., 1946

Currier and Ives
Harry T. Peters
Doubleday, Doran Co.

Old Glass Paperweight
E. R. Bergstrom
The Lakeside Press, Chicago

Flower Prints by Fanny Farmer

VII. Early Twentieth Century American Traditional Line, Line-Mass, MASS 1930's-1960's

Containers

Glass brick
Brandy glass
Swedish crystal—
Bowls
Vases
Compotes
Plates
Modern pottery—
Vases
Pitchers
Bowls
Boats
Jars
Bulb bowls
Figurine flower container
Brass, bronze, copper and Pewter
Vases
Bowls
Urns
Spun aluminum—
Bowls
Platters
Pillow vases of porcelain, metal
and pottery
Wall pockets
Epergnes
Chinese porcelain vases and
bowls
Wide range of modern decorative
objects which are utilized
as flower containers

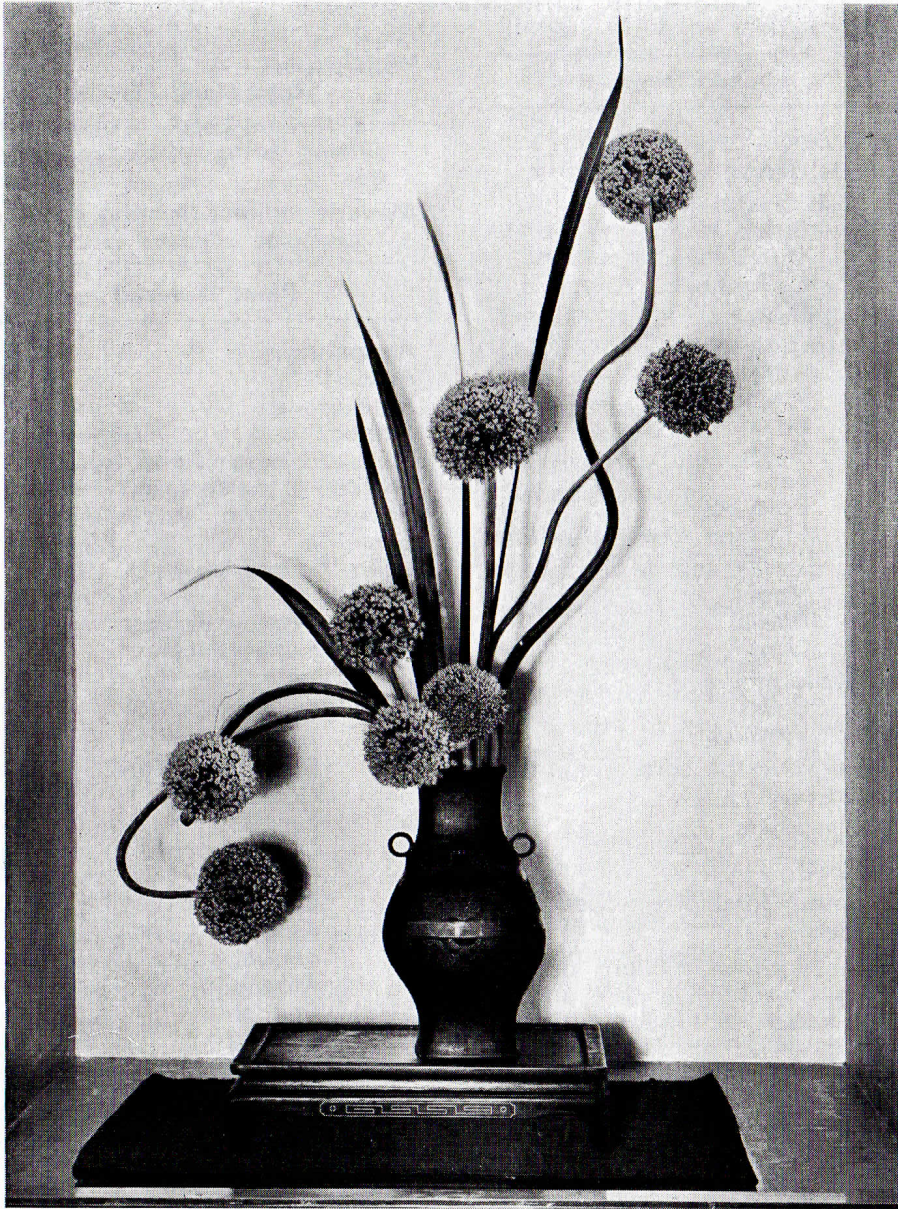
Backgrounds

Monotone settings—
Antique white
Gray
Putty
Black
Rough textured fabrics
Walls—
Plastered
Wood paneled
Mirrored

Wall paper—
Striped and flowered
Vivid flowers used in monotone
setting bring whole room to
life
Modern indirect lighting drama-
tizes color schemes

Plant Material

Agapanthus
Amaryllis
Anthurium
Azalea
Banana blossoms and fruit
Broccoli (gone to seed)
Cactus
Camellia
Calla lily and leaves
Cattails
Chinese Tallow berries
Cockscomb
Cyclamen
Foliage material—
Aspidistra
Bird's Nest Fern
Caladium
Croton
Dieffenbachia
Dracaena
Eucalyptus
Kale
Loquat
Magnolia
Pandanus
Parsley
Philodendron
Rhododendron
Rhubarb
Sansevieria
Gardenia
Gladiolus
Hibiscus
Hydrangea
Iris
Kalanchoe
Lotus flowers and leaves
Onion blooms
Orchid



Modern

MATTIE EDWARDS HEWITT

An unusual and distinctive interpretation of Modern flower arrangement, using onion blooms and foliage in a well balanced design. Arrangement by Mr. Dwight Kellogg

Pitcher plant
Strelitzia
Succulents
Tigridia
Tritoma
Tulip
Zinnia

Glass
Glass topped
Console
Nest of tables

Arrangement Characteristics

Line arrangements preferred, usually of geometric form
Elimination of all unnecessary and confusing detail
Dramatic and exotic
Bold silhouette
Distinctive and unusual plant material
Strong upright and angular forms
Bold rich colors preferred to pastels
Stemless flowers floated in shallow bowls or plates
Bizarre combinations of fruits and vegetables with plant material
All-foliage arrangements popular
When mass arrangements are used they are colorful, stylized, and circular in form
Odd combinations of similar textured material, such as gardenias and eggs.
Small flowers (tuberose, hyacinth, stock, etc.) strung on bamboo splints or straws often used for exotic effects.
Gilded and/or silvered fruit and foliage arrangements are used for formal dinner tables
Modern flower arrangement is still a growing style.

Favored Colors

Citron yellow
Chamois yellow
Chartreuse
Cafe au lait
Terra cotta
Earth brown
Chalk grey
Vermilion

Accessories

Danish porcelain—
Figurines
Animals
Modern pottery—
Birds
Animals
Figurines
Candle sticks
Cigarette boxes
Ash trays
Crystal—
Balls
Birds, fish, animals
Figurines
Ornaments
Candle sticks
Candy and cigarette boxes
Coral
Books and book ends
Fruit of all sorts
Plastic ornaments and objects
Globes
Prints
Potted plants
Aquarium
Clock, lamp, barometer
Decanter and glasses
Unusual ornaments of brass, bronze, copper and pewter

Appropriate Setting

Desk
Radio
Piano
Book shelf
Pedestal
Tripod flower stand
Chest
Tables: Walnut, fruitwood or bleached
Coffee

Coral red
Strawberry red
Raspberry
Lacquer red
Eggplant purple
Peking blue
Lupine blue
Reseda green
Olive green
Sage green
Black

Bibliography

Flowers—East-West
Gregory Conway
Knopf, 1938
Flowers in House and Garden
Constance Spry
Putman, 1937
Design in Flower Arrangement
John Taylor Arms
Macmillan, 1937
Modern Interiors

Herbert Hoffman
The New Interior Decoration
Todd and Mortimer
Book of Furniture and Decora-
tion—Period and Modern
Joseph Aronson
Crown Publishers, 1936
Decoration—Past, Present and
Future
Sarah Lockwood
Doubleday-Doran, 1934
Interiors Today and Tomorrow
E. Genauer
Illustrated Editions Co., N. Y.,
1939
Furnishing in Style
Walter Storey
American Studio Books, N. Y.,
1947
Color and Design in the Decora-
tive Arts
Elizabeth Burris-Meyer
Prentice-Hall, Inc., N. Y.,
1940

