



MARINATOWERS®

Nautical High Life

*The most anticipated beachfront
development in Marina Vallarta*



MARINATOWERS®

Nautical High Life



AMENITIES

Paddle Courts
Pickleball Courts
Movie Theater
Kids Playroom
Lush Tropical Gardens
Pet Park
Yoga / Meditation Area
Business Center / Coworking
Pool Bars
Games Rooms / Sports Bar
Private Marina
Yacht Club
Beach Club
Extensive Wine Cellar
Fire Pits
Solar Panels in Tower Roofs
Special Events Location for Owners
4 High-Speed Elevators
(One Large, One for Moving Purposes and Medical Emergency)



SERVICES

Electric Water Taxis

Electric Bikes

Concierge 24/7

24/7 Security and CCTV

Tesla and Rivian Chargers

Ocean-View Restaurant / Bar

24/7 Medical Services on Site
(Provided by SANMARÉ)







*The developer reserves the right to modify colors, materials, features, amenities, floor plans, prices, conditions and services at any time with out notice.

KEY INDICATORS

Tower	A
Units	130
Starting commercialization date	April 2023
Construction period (months)	24 per Tower



GROUND LEVEL

TYPE C

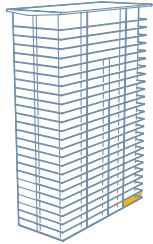
 4 + FR

 5

 293.71 m² | 3,161.468 ft²



*The developer reserves the right to modify colors, materials, features, amenities, floor plans, prices, conditions and services at any time without notice. The areas of the apartments are taken along the axis of the wall between contiguous apartments, and the entire wall towards common areas.



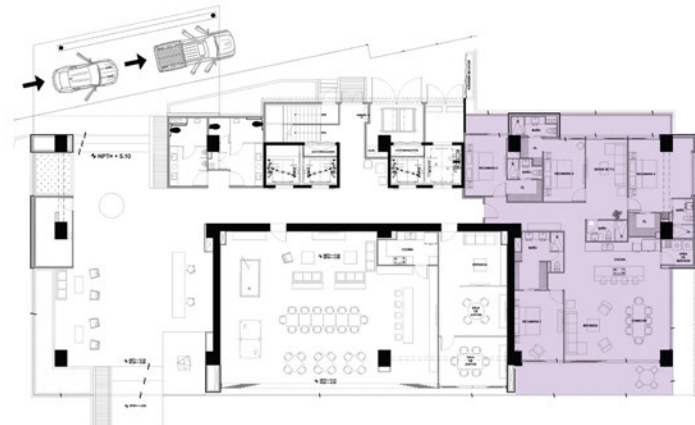
UNIT TYPE C

LEVEL 1

 4+FR

 5

 293.71 m² | 3,161.468 ft²



*The developer reserves the right to modify colors, materials, features, amenities, floor plans, prices, conditions and services at any time without notice. The areas of the apartments are taken along the axis of the wall between contiguous apartments, and the entire wall towards common areas.

LEVELS 1-19

TYPE A

 2  2.5

 155.40 m² | 1,672.711 ft²

TYPE B

 1  2

 108.96 m² | 1,297.374 ft²

TYPE D

 2  2

 120.53 m² | 1,319.332 ft²

TYPE E

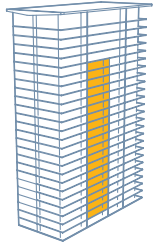
 2  2.5

 162.29 m² | 1,729.545 ft²



*The developer reserves the right to modify colors, materials, features, amenities, floor plans, prices, conditions and services at any time without notice. The areas of the apartments are taken along the axis of the wall between contiguous apartments, and the entire wall towards common areas.





UNIT TYPE A

LEVELS 1-19



2



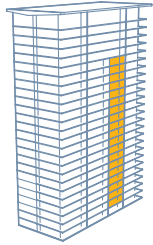
2.5



155.40 m² | 1,672.711 ft²



*The developer reserves the right to modify colors, materials, features, amenities, floor plans, prices, conditions and services at any time without notice. The areas of the apartments are taken along the axis of the wall between contiguous apartments, and the entire wall towards common areas.



UNIT TYPE B

LEVELS 1-19



1



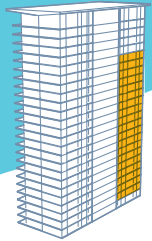
2



108.96 m² | 1,297.374 ft²



*The developer reserves the right to modify colors, materials, features, amenities, floor plans, prices, conditions and services at any time without notice. The areas of the apartments are taken along the axis of the wall between contiguous apartments, and the entire wall towards common areas.



UNIT TYPE D-1

LEVELS 1-19



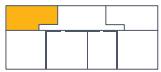
2



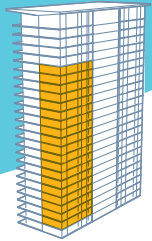
2



120.53 m² | 1,319.332 ft²



*The developer reserves the right to modify colors, materials, features, amenities, floor plans, prices, conditions and services at any time without notice. The areas of the apartments are taken along the axis of the wall between contiguous apartments, and the entire wall towards common areas.



UNIT TYPE D-r

LEVELS 1-19



2



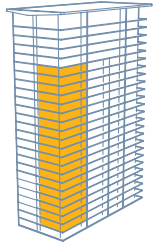
2



120.53 m² | 1,319.332 ft²



*The developer reserves the right to modify colors, materials, features, amenities, floor plans, prices, conditions and services at any time without notice. The areas of the apartments are taken along the axis of the wall between contiguous apartments, and the entire wall towards common areas.



UNIT TYPE E-1

LEVELS 1-19



2



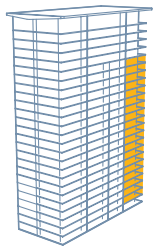
2.5



162.29 m² | 1,729.545 ft²



*The developer reserves the right to modify colors, materials, features, amenities, floor plans, prices, conditions and services at any time without notice. The areas of the apartments are taken along the axis of the wall between contiguous apartments, and the entire wall towards common areas.



UNIT TYPE E-r

LEVELS 1-19



2



2.5



162.29 m² | 1,729.545 ft²



*The developer reserves the right to modify colors, materials, features, amenities, floor plans, prices, conditions and services at any time without notice. The areas of the apartments are taken along the axis of the wall between contiguous apartments, and the entire wall towards common areas.

LEVELS 20-24

TYPE C

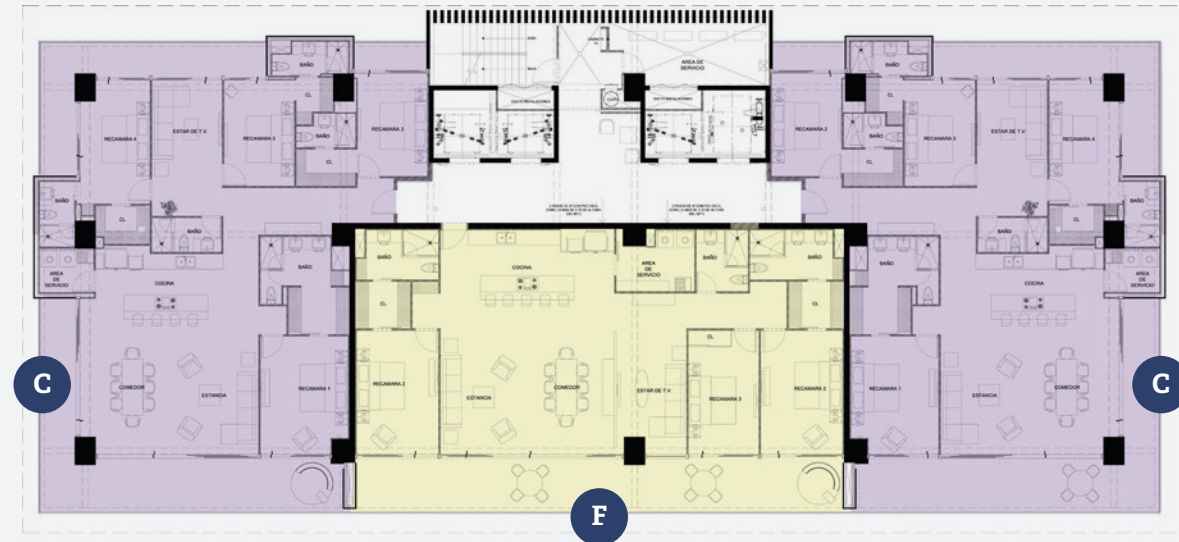
 4 + FR  5

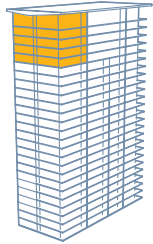
 293.71 m² | 3,161.468 ft²

TYPE F

 3 + FR  3

 261.43 m² | 2,791.943 ft²





UNIT TYPE C-1

LEVELS 20-24

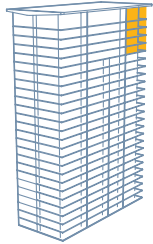
 4 + FR

 5

 293.71 m² | 3,161.468 ft²



*The developer reserves the right to modify colors, materials, features, amenities, floor plans, prices, conditions and services at any time without notice. The areas of the apartments are taken along the axis of the wall between contiguous apartments, and the entire wall towards common areas.



UNIT TYPE C-r

LEVELS 20-24

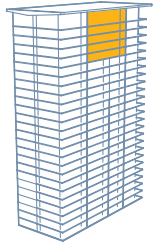
 4 + FR

 5

 293.71 m² | 3,161.468 ft²



*The developer reserves the right to modify colors, materials, features, amenities, floor plans, prices, conditions and services at any time without notice. The areas of the apartments are taken along the axis of the wall between contiguous apartments, and the entire wall towards common areas.



UNIT TYPE F

LEVELS 20-24

 3 + FR

 3

 261.43 m² | 2,791.943 ft²



*The developer reserves the right to modify colors, materials, features, amenities, floor plans, prices, conditions and services at any time without notice. The areas of the apartments are taken along the axis of the wall between contiguous apartments, and the entire wall towards common areas.

TOWER C

TOWER B

TOWER A



MARINATOWERS®

Nautical High Life

- A Tower A
- B Tower B
- C Tower C
- D Fire Pit
- E Jacuzzi
- F Infinity Pool
- G Gym
- H Restaurant
- I Yacht club / Beach club
- J Beach
- K Spa
- L Dock / Water Taxi Service
- M Paddle Courts
- N Pickleball Courts
- O Pool Bar
- P Coworking
- Q Movie Theater
- R Kids Playroom
- S Special Events Location for Owners
- T Pet Park
- U Yoga / Meditation Area
- V Parking for Visitors



AMENITIES

*The developer reserves the right to modify colors, materials, features, amenities, floor plans, prices, conditions and services at any time with out notice.

- D** Fire Pit
- E** Jacuzzi
- F** Infinity Pool
- G** Gym
- H** Restaurant
- I** Yacht club / Beach club
- J** Beach
- K** Spa
- L** Dock / Water Taxi Service
- M** Paddle Courts
- N** Pickleball Courts
- O** Pool Bar
- S** Special Events Location for Owners
- T** Pet Park
- U** Yoga / Meditation Area
- V** Parking for Visitors



AMENITIES

*The developer reserves the right to modify colors, materials, features, amenities, floor plans, prices, conditions and services at any time with out notice.