

# The Addison



# The Addison

Welcome home to convenient lifestyle living!

## Suite Highlights

Residents will enjoy:

- In-suite full-size washer and dryer
- Four stainless steel kitchen appliances: dishwasher, fridge, stove, microwave
- Walk-out private balcony
- Open concept floorplan
- In-suite temperature control
- Central air conditioning
- Key fob-enabled suite access and security
- Individually metered and controlled utilities (hydro, water, gas – Wyse Metering - \$)
- Fibre internet, cable television and landline phone service (Cogeco/Bell - \$)



## Building Features

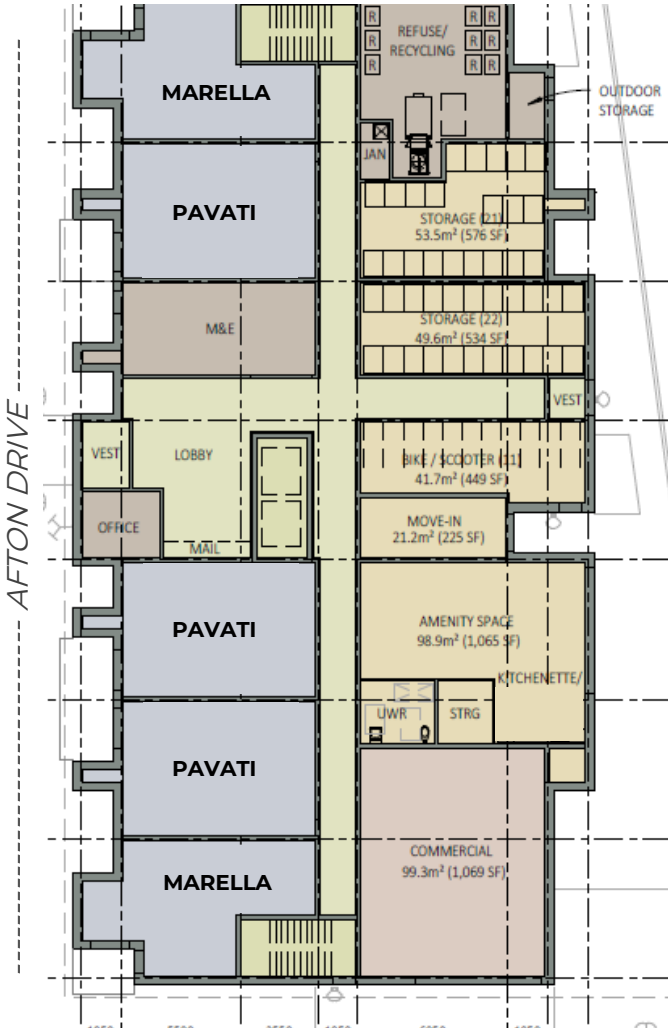
Residents will enjoy:

- A lively common room and terrace, including a community BBQ
- Modern landscaping surrounding the exterior
- Secured entrance
- Secure parcel delivery (Snail)
- Free shared onsite parking
- Indoor bicycle storage
- Smoke free property
- Window coverings included
- Indoor scooter storage and charging (\$)
- Ground floor storage lockers (\$)
- EV charging stations (\$)

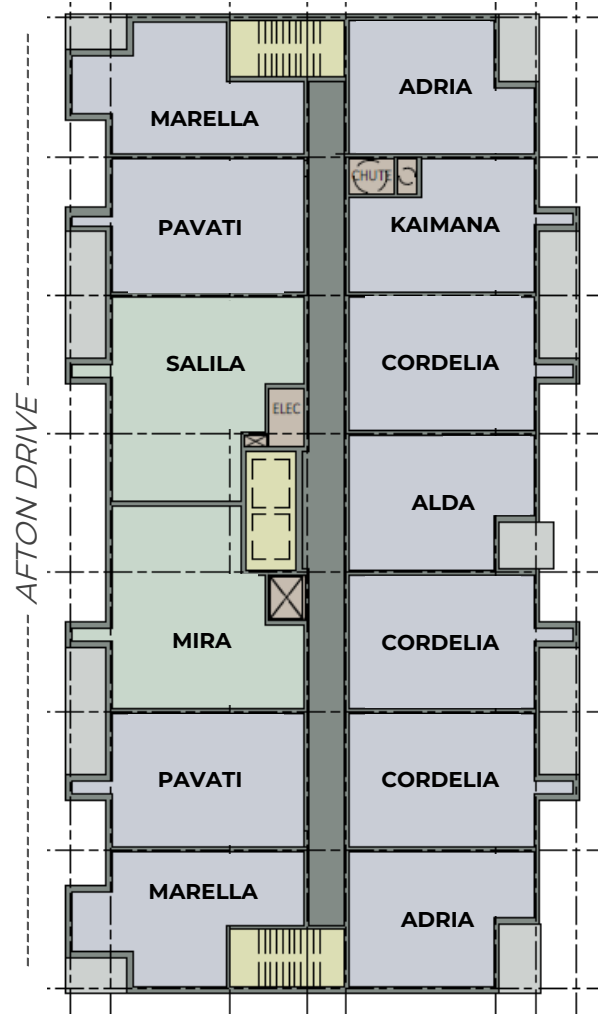
# The Addison

## Building floor plans

### First Floor



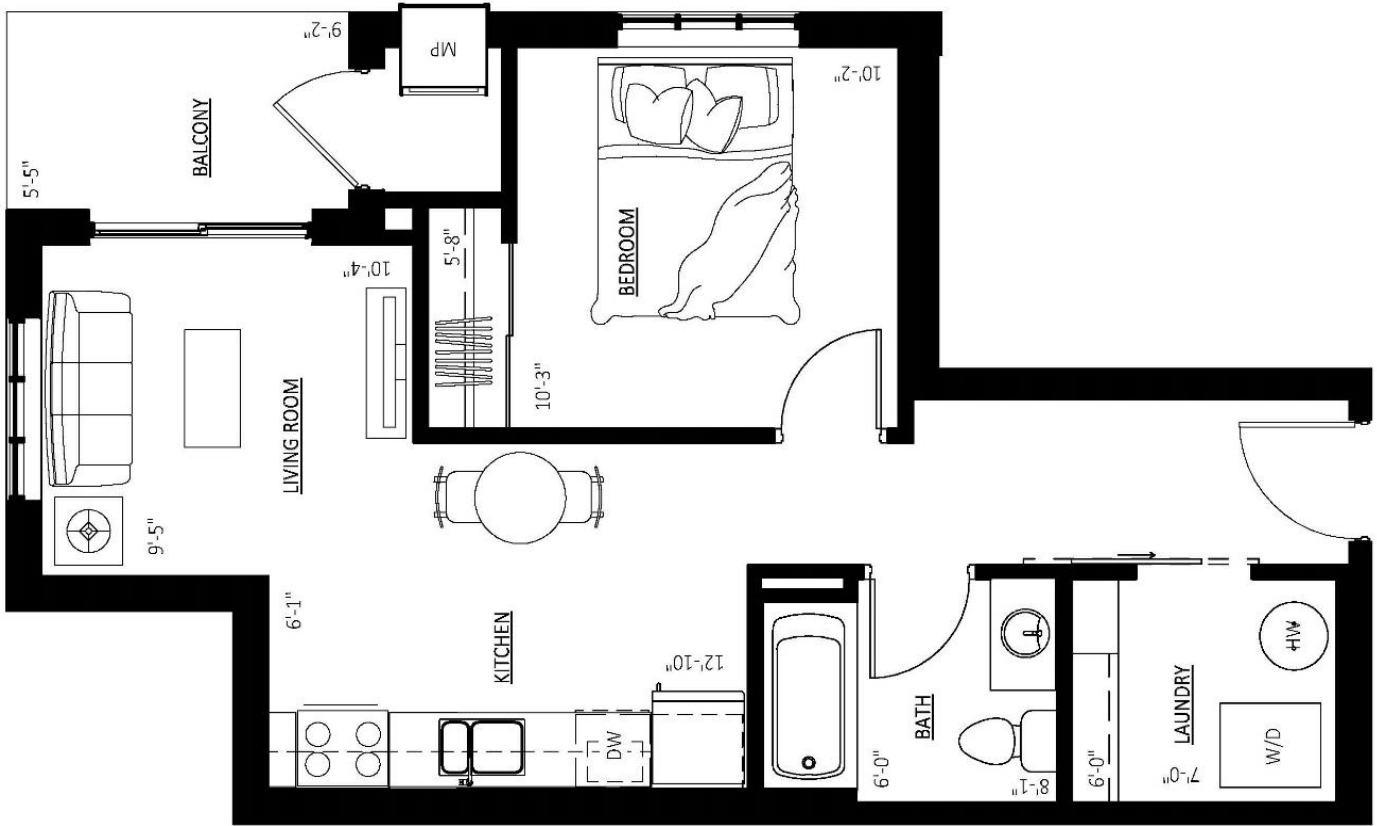
### Floors 2 - 6



- 1 Bedroom Suite
- 2 Bedroom Suite

# MARELLA

1 Bedroom 1 Bathroom



*Suite Size*

635 Sq Ft

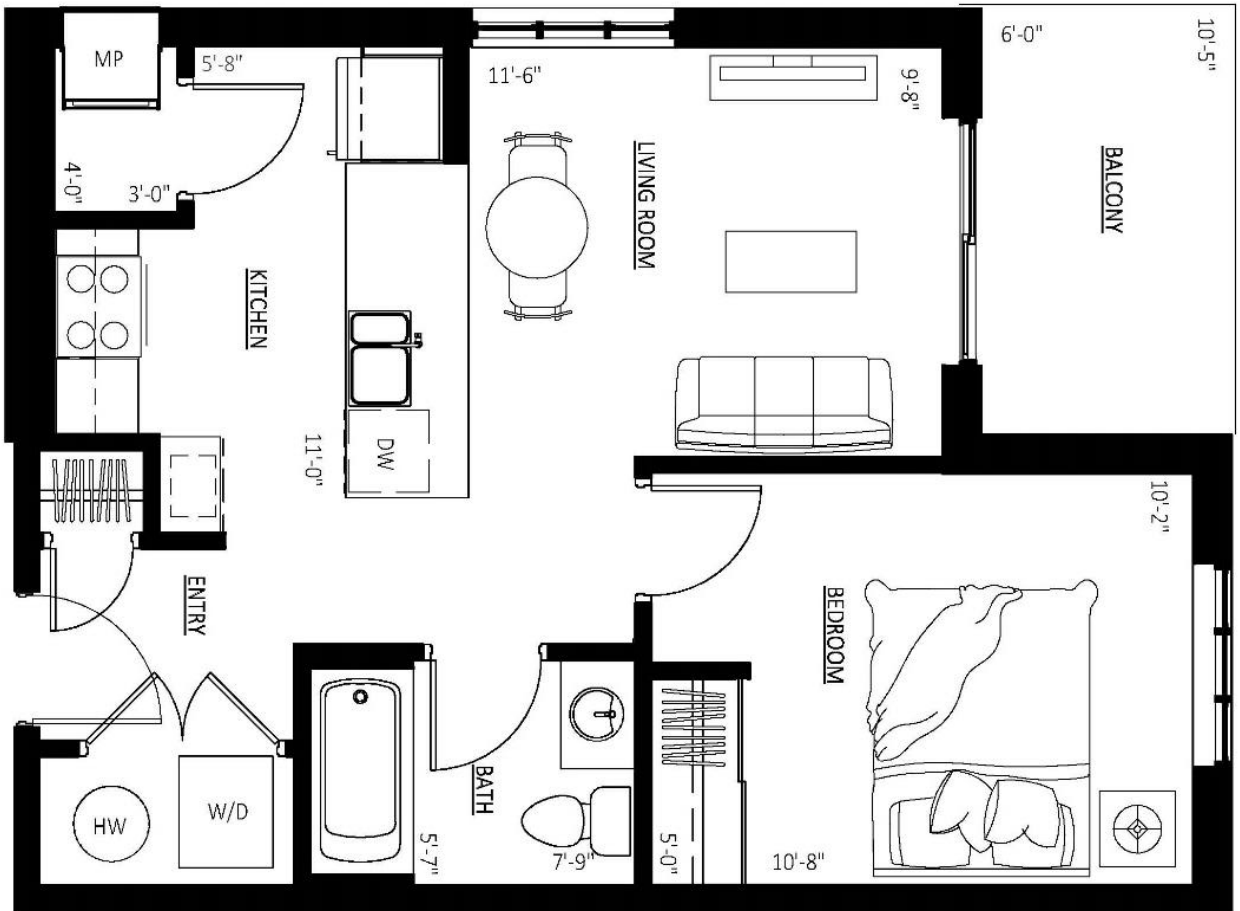
- Master Bedroom: 10'-3" x 10'-2"
- Kitchen: 12'-10" x 6'-1"
- Living Room: 10'-4" x 9'-5"
- Balcony: 9'-2" x 5'-5"
- Bathroom: 8'-1" x 6'-0"
- Laundry: 7'-0" x 6'-0"

*\*Approximate dimensions only, subject to change without notice*

*The Addison*

# ADRIA

## 1 Bedroom 1 Bathroom



### Suite Size

631 Sq Ft

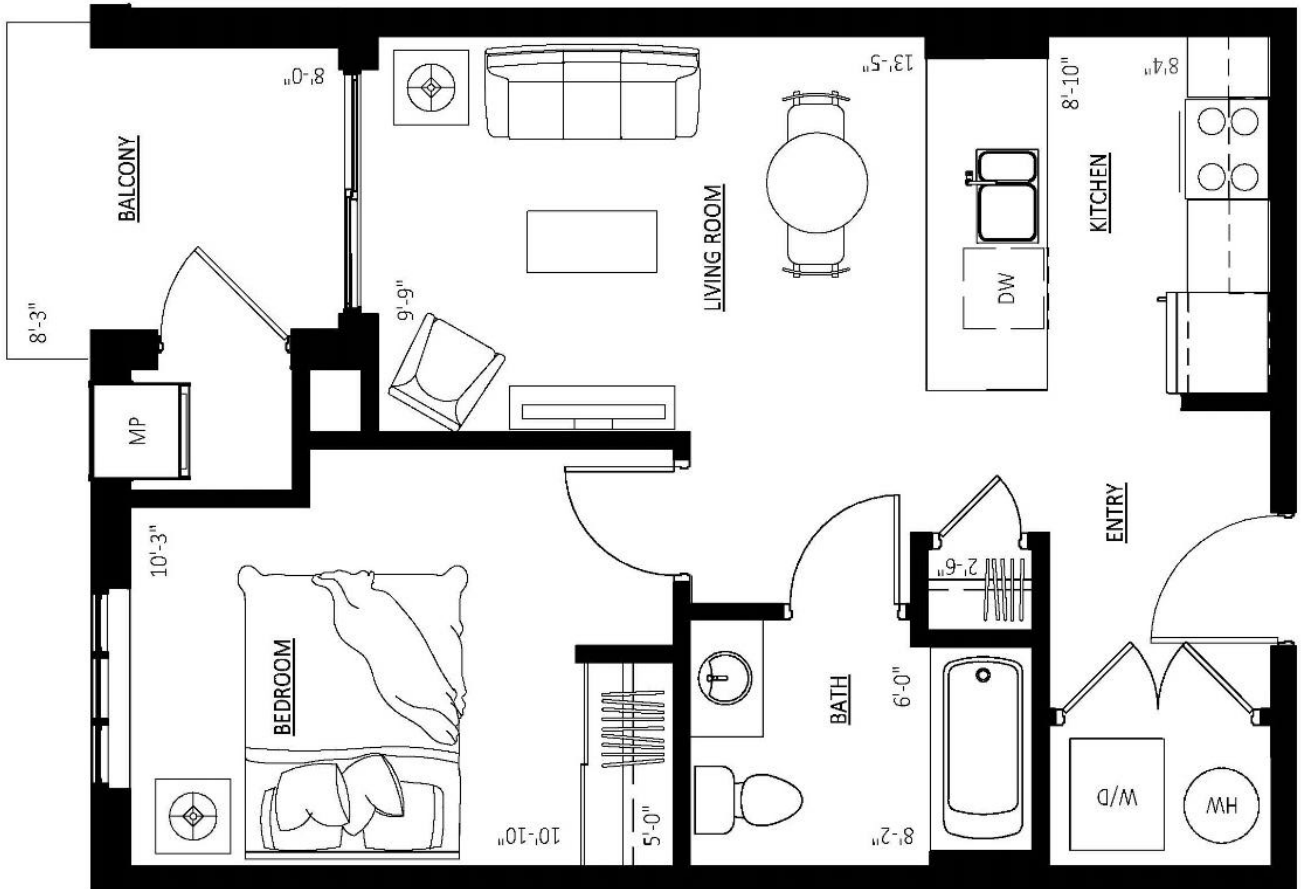
- Master Bedroom: 10'-8" x 10'-2"
- Kitchen: 5'-8" x 11'-0"
- Living Room: 11'-6" x 9'-8"
- Balcony: 6'-0" x 10'-5"
- Bathroom: 7'-9" x 5'-7"

\*Approximate dimensions only, subject to change without notice

The Addison

# ALDA

## 1 Bedroom 1 Bathroom



### Suite Size

630 Sq Ft

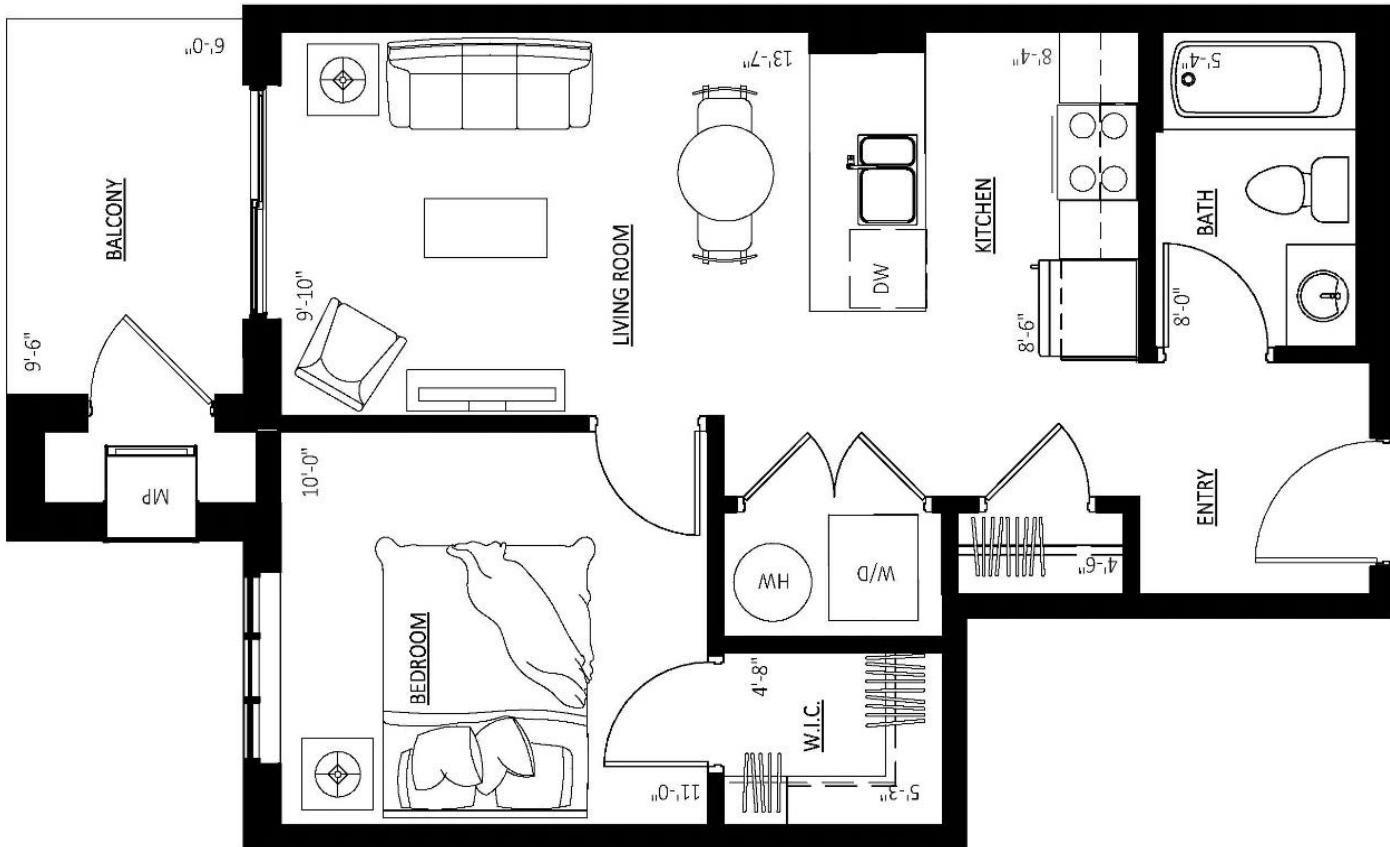
- Master Bedroom: 10'-10" x 10'-3"
- Kitchen: 8'-4" x 8'10"
- Living Room: 13'-5" x 9'-9"
- Balcony: 8'-0" x 8'-3"
- Bathroom: 8'-2" x 6'-0"

\*Approximate dimensions only, subject to change without notice

The Addison

# KAIMANA

1 Bedroom 1 Bathroom



*Suite Size*

634 Sq Ft

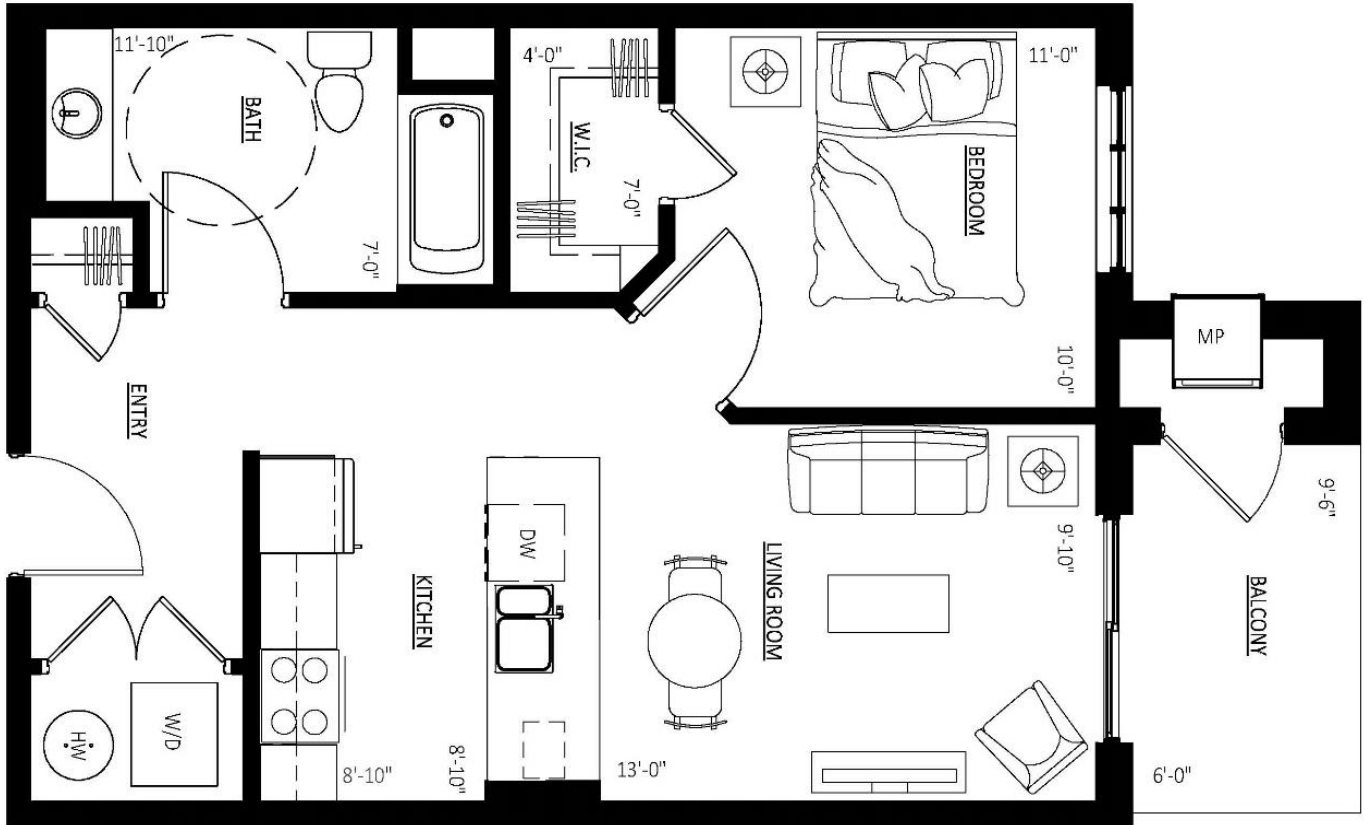
- Master Bedroom: 11'-0" x 10'-0"
- Kitchen: 8'-4" x 8'-6"
- Living Room: 13'-7" x 9'-10"
- Balcony: 6'-0" x 9'-6"
- Bathroom: 5'-4" x 8'-0"

*\*Approximate dimensions only, subject to change without notice*

*The Addison*

# CORDELIA

1 Bedroom 1 Bathroom



## Suite Size

698 Sq Ft

- Master Bedroom: 11'-0" x 10'-0"
- Kitchen: 8'-10" x 8'-10"
- Living Room: 13'-0" x 9'-10"
- Balcony: 6'-0" x 9'-6"
- Bathroom: 11'-10" x 7'-0"

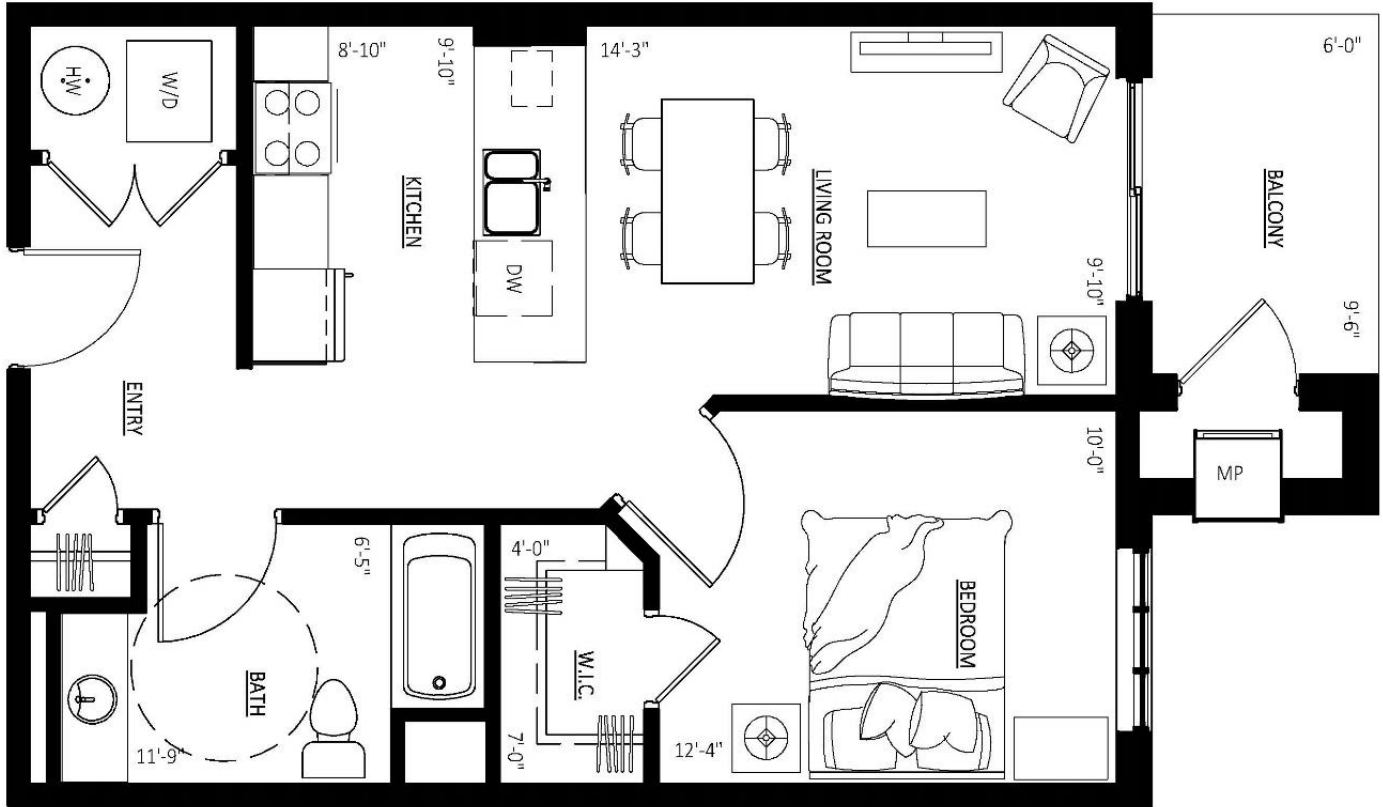
\*Approximate dimensions only, subject to change without notice

The Addison



# PAVATI

1 Bedroom 1 Bathroom



*Suite Size*

723 Sq Ft

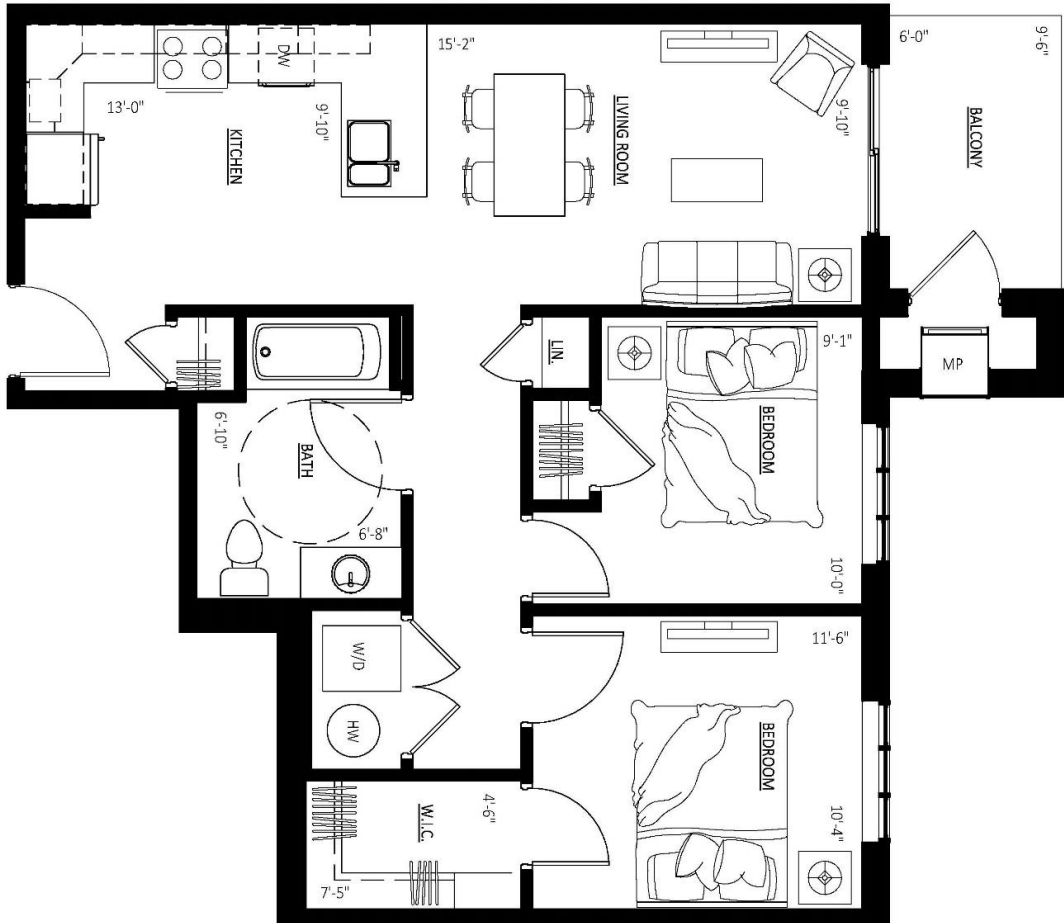
- Master Bedroom: 12'-4" x 10'-0"
- Kitchen: 8'-10" x 9'-10"
- Living Room: 14'-3" x 9'-10"
- Balcony: 6'-0" x 9'-6"
- Bathroom: 11'-9" x 6'-5"

*\*Approximate dimensions only, subject to change without notice*

*The Addison*

# MIRA

## 2 Bedroom 1 Bathroom



### Suite Size

890 Sq Ft

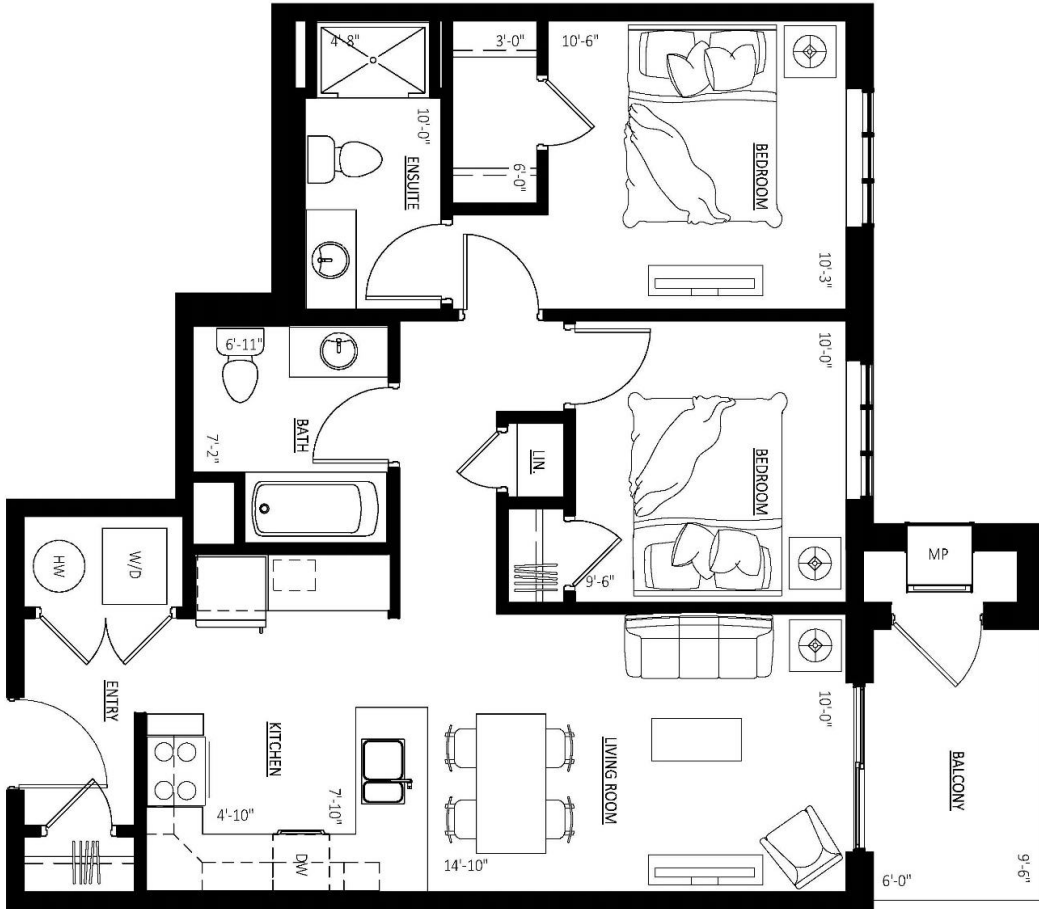
- Master Bedroom: 11'-6" x 10'-4"
- Second Bedroom: 9'-1" x 10'-0"
- Kitchen: 13'-0" x 9'-10"
- Living Room: 15'-2" x 9'-10"
- Balcony: 6'-0" x 9'-6"
- Bathroom: 6'-8" x 6'-10"

*\*Approximate dimensions only, subject to change without notice*

*The Addison*

# SALILA

## 2 Bedroom 2 Bathroom



### Suite Size

893 Sq Ft

- Master Bedroom: 10'-6" x 10'-3"
- Second Bedroom: 9'-6" x 10'-0"
- Kitchen: 4'-10" x 7'-10"
- Living Room: 14'-10" x 10'-0"
- Balcony: 6'-0" x 9'-6"
- Bathroom: 6'-11" x 7'-2"
- Ensuite Bath: 4'-8" x 10'-0"

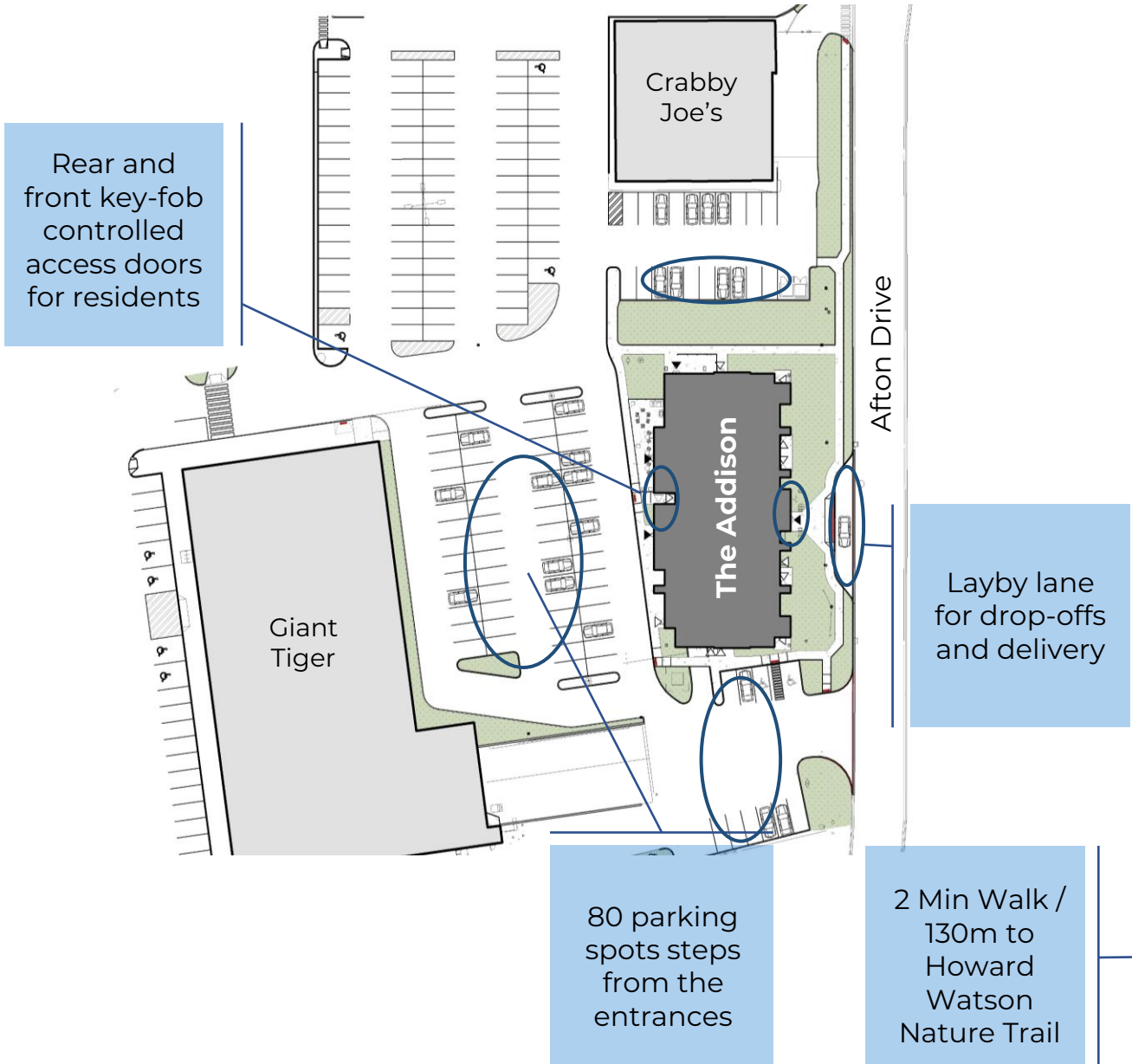
*\*Approximate dimensions only, subject to change without notice*

*The Addison*

# The Addison

Convenient access and free parking

London Road



Rear and front key-fob controlled access doors for residents

Layby lane for drop-offs and delivery

80 parking spots steps from the entrances

2 Min Walk / 130m to Howard Watson Nature Trail

# The Addison

Conveniently located near retail shops and professional services



**London Road Shopping Centre**  
1 Min Walk / 50 M



**Lambton Mall**  
10 Min Walk / 1 KM



# The Addison



## Contact

519-337-9732

[propmgmt@theaddison.org](mailto:propmgmt@theaddison.org)

[www.theaddison.org](http://www.theaddison.org)