

# S.K ELECTRICAL

## COMPANY PROFILE



**S.K ELECTRICAL**  
Our energy is working for you



**Electrical & Mechanical  
Contractor**



# S.K ELECTRICAL

ALL TYPES OF INDUSTRIAL ELECTRICALS, INSTRUMENTATION & ENGINEERING WORKS.  
GOVT. APPROVED ELECTRICAL CONTRACTOR

T-17, Jevandeep Arcade, Near Asian Paints Chokdi Ankleshwar-393010  
E-mail Id : [Deepak@skelectrical.co.in](mailto:Deepak@skelectrical.co.in) Website : [skelectrical.co.in](http://skelectrical.co.in)

## INTRODUCTION:

**SK Electrical**, Have a leading Electrical Contracting service provider. With Our High Quality Maintenance and installation services. We are involved with variety of electrical services like.

### **Our E & I services**

- ✓ Street Light Service.
- ✓ Cable Laying Services.
- ✓ Industrial Electrification Services.
- ✓ Panel Installation and Maintenance Services.
- ✓ Laying and Termination of HT/LT Cables Services.
- ✓ Annual Maintenance Service Electrical projects.
- ✓ PLC Panel Installation & Termination of Instrument.
- ✓ Plant Automation, Food & Beverages Company's.

### **Our Mechanical Installation services**

- ✓ All Type of SS-Dairy Skid and Utility With Process Piping Fabrication & Installations.
- ✓ Beverages Skid Shifting, Erection & installation.
- ✓ Flow-Plate Shifting, Erection & Installation.
- ✓ All Mechanical tanks Shifting, Erection & Installation.

We pride ourselves on quality workmanship and service excellence. SK Electrical is an authorized Electrical & Mechanical Contractor and registered with all relevant Authorities.

Our Teams of qualified electricians and skilled worker we ensure that Every Job, No matter the size and complexity is carried out in a safe and professional manner. Our trained technician are capable of resolving the most complex of electrical issue, they have built a solid reputation within the industrial market, with client satisfaction.

### **Our Group:**

- Engineer
- Supervisor
- ITI/Electrician
- Fitter/Welder
- Skilled Worker

We Providing Excellent quality services to meets the Requirement of our Customers.

**We have sufficient Manpower, We Arrange Manpower as per Site Requirement.**

**Our sound knowledge of the Electrical & Mechanical Industry allows us to be hands on in every aspect of the Electrical Contract Work job from the beginning to end.**

## **AIM:**

Our Aim is to Provide High Quality of Services to all our Clients and Make Continual Improvement to our Services and People. Maintain Customer Satisfaction is Prime Factor in our Success and Also Fully Understand Our Clients' needs and Exceed their Expectations Throughout the project Life cycle.

## **MISSION:**

"SK ELECTRICAL" Constantly working to Improve our Quality Service to our Customers in order to Maintain and Achieve high Standard of Quality work. The Management of SK ELECTRICAL believes that customer satisfaction is an important key to the success of our business.

## **ABILITY:**

We Approach our Customers and Continuously in contact with them so that gets there Feedbacks We operate an open & Honest Relationship with all our Clients.

## **PERFORMANCE:**

We Achieve Customer Satisfaction and Repeat business by Providing Good Service and Fulfill Customer Requirements.

## **HEALTH & SAFETY POLICY:**

SK ELECTRICAL provide a safe and healthy environment According to the Health and safety work Act. and Also Act with Industrial Company Policies.

- Make Proper Arrangements and Protects the Health Safety.
- Meet its Responsibilities as Employer to Prevent Accidents, Injuries and Damages.
- Provide and Maintain Safe Working Environment that without Risks to Health, Safety and Welfare.
- Train all Employees to be Aware of their Own Responsibilities in Respect of Health & Safety and Participating in Preventing Accidents and Injuries and Damage.

**We Arrange Manpower as per Site Requirement.**

## OUR CLIENTS:

### INDUSTRIAL WORK.

Consultant Details	
Company Name	Consultancy Name
Parle Agro Pvt Ltd, Hyderabad	Nis-Tech Electromech Pvt Ltd, Ahmedabad.
Parle Agro Pvt Ltd, Mumbai	Nis-Tech Electromech Pvt Ltd, Ahmedabad.
Coca- Cola, Nepal	Aakar Engineering Industries, Vadodara. (GEA Vendor)
Baroda Dairy, Vadodara.	Aakar Engineering Industries, Vadodara. (GEA Vendor)
Godrej-CDPL Dairy, Hyderabad.	Aakar Engineering Industries, Vadodara. (GEA Vendor)
Hatsun Agro Pvt Ltd, Solapur.	Aakar Engineering Industries, Vadodara. (GEA Vendor)
UPL PVT LTD, Jhagadia.	ISGEC Heavy Engineering Ltd.

	UPL-5, Jhagadia
	Gujarat Organics Ltd Jhagadia
	Coca-Cola-Nepal.
	Hatsun Agro Pvt Ltd, Solapur

	Baroda Dairy
	Godrej-CDPL Dairy, Hyderabad
	Parle Agro Pvt Ltd, Hyderabad
	Thermax Limited
	CETP, Vapi

### Running Project

- Thermax Chemical Ltd, Dahej.
- Hatsun Agro Pvt Ltd, Solapur.
- CETP, Vapi Gujarat.
- 

### GOVERNMENTWORK.

- ETP-RO Plant Handling, Panoli.
- Street Light & pole fitting



## WORK DETAILS:

### BARODA DAIRY

(Vadodara, Gujarat)

<b>Manpower Details</b>	<b>27</b>	<b>Project Details: - Baroda Dairy Plant Expansion.</b> <b>Application: - Dairy Industry.</b>
<b>Engineer</b>	<b>2</b>	
<b>Project Completed</b>	<b>In 6 Months.</b>	

#### WORK DETAILS:

- Termination, Installation, Testing and Commissioning of **(PLC, MCC RIO)** Panel including shifting thru Hydra/Crane at required Floor, leveling, grouting, aligning, testing, wiring etc. As per the panel drawings.
- Installation of SS, GI & SS CAGE Type cable Tray for laying of power, Instrumentation, communication cables.
- Laying& termination of Power & control cables.
- Megger testing for Motors, Panels.
- Testing and commissioning of 415 V, 50 Hz, 3 Phase AC Induction Motors of standard type.
- Installation & fabrication of structure SS, GI Box Support with Flange.
- I/O-Scheduling & termination of Instrument in PLC Based Control Panel.
- Installation of UPS DBs
- Installation of GI Strip for Panel Earthing.
- Termination of **(Control valve, Mix-pruff & Butterfly Actuator valve)** With **(Actuator Sensor Interface, As- iCommunication Module)**
- Termination of Temperature transmitter, pressure transmitter
- Designing & Manage of cable tray route
- Installation, testing and commissioning of emergency switches, Motor Isolators. This includes preparation of frame, fixing on SS conduit, SS angle.

### COCA'COLA- NEPAL

(BNTL, Nepal)

<b>Manpower Details</b>	<b>27</b>	<b>Project Details: -Coca-Cola BNTL Nepal Plant Expansion.</b> <b>Type :- (Electrical &amp; Mechanical)</b> <b>Application: - Beverages Industry.</b>
<b>Engineer</b>	<b>2</b>	
<b>Project Completed</b>	<b>In 5 Months.</b>	

#### WORK DETAIL:

- Termination & Instrument Testing of**(LEVEL TRANSMITTER, CONDUCTIVITY TRANSMITTER, FLOW METERS, PRESSURE TRANSMITTER, RTD with TT PRESSURE GAUGES, TEMPERATURE GAUGES, SOLENOID VALVES, PROXIMITY SWITCH, CONTROL VALVE).**
- Laying of LT power ,Control cable and signal cables in SS cage type tray, GI trays, Trenches.
- Installation and fabrication of structural steel in form of SS/MS angles, channels, flats etc.
- Installation of hot dip galvanized/copper earthing strip/conductors. Installation of include bolting, welding and termination. All joints shall be welded and terminations shall be bolted.

- Preparation of Earth-pit and CS hinge Cover for earth pit.
- Installation of SS pipe as cable dropouts in process area. This includes making pipe supports, welding to SS supports plates etc.
- Testing and commissioning of 415 V, 50 Hz, 3 Phase AC TEFC squirrel cage induction motors of standard type.
- Testing & commissioning of motors include checking and correcting the direction or rotation, coupling and de-coupling of driven equipment, greasing of bearings if required, checking of insulation resistance of windings, no-load current.
- Installation, testing and commissioning of emergency switches & Push button station, de-connector switches.
- **All Mechanical tanks Shifting, Erection & Installation.**
- **Utility with Process Piping Shifting, Erection & Installation.**
- **Beverages Skid Shifting, Erection & Installation.**

## GODREJ-CDPL DAIRY

(Jersey Dairy, Hyderabad)

<b>Manpower Details</b>	<b>8</b>	<b>Project Details: - Double Circuit CIP Section Type :- (Electrical &amp; Mechanical) Application: - Dairy Industry.</b>
<b>Engineer</b>	<b>1</b>	
<b>Project Completed</b>	<b>In 4 Months.</b>	

### WORK DETAIL:

- Supply & Commissioning of **(PLC, HMI based Control Panel)**.
- Installation, Testing and Commissioning with all Automation work of **(Double Circuit CIP Section Plant)**.
- Testing & commissioning of 415 V, 50 Hz, 3 Phase squirrel cage induction motors include checking and correcting the direction or rotation, coupling and de-coupling of driven equipment, greasing of bearings if required, checking of insulation resistance of windings, no-load current.
- Termination, Calibration & Instrument Testing **(LEVEL TRANSMITTER, CONDUCTIVITY TRANSMITTER, FLOW METERS, PRESSURE TRANSMITTER, RTD with TT PRESSURE GAUGES, TEMPERATURE GAUGES, SOLENOID VALVES, PROXIMITY SWITCH, CONTROL VALVE)**.
- Designing & Manage of cable tray route.
- I/O Scheduling & termination of PLC Panel.
- Termination of **(Control valve, Mix- pruff & Butterfly Actuator valve)** With **(Actuator Sensor Interface, As-I Communication Module)**.
- **Flow-Plate Shifting, Erection & Installation.**
- **All Mechanical tanks Shifting, Erection & Installation**
- **Utility with Process Piping Shifting, Erection & Installation.**

## PARLE AGRO.

(Mumbai, Hyderabad)

<b>Manpower Details</b>	<b>18</b>	<b>Project Details: - Plant Extension Application: - Beverages Industry.</b>
<b>Engineer</b>	<b>2</b>	
<b>Project Completed</b>	<b>In 5 Months.</b>	

### **WORK DETAIL:**

- Installation, & Commissioning of PCC & MCC Panel.
- Cable Laying & Termination for PCC & MCC Panel.
- Testing and commissioning of 415 V, 50 Hz, 3 Phase AC Induction Motors.
- Installation of Lighting DBs & Power DBs.
- Testing and commissioning of 415 V, 50 Hz, 3 Phase AC Induction Motors

## HATSUN AGRO-SOLAPUR

(Solapur, Maharashtra)

<b>Manpower Details</b>	<b>16</b>	<b>Project Details: - Plant Extension (Manpower Supply) Type :- (Electrical &amp; Mechanical) Application: - Beverages Industry.</b>
<b>Engineer</b>	<b>2</b>	
<b>Project Completed</b>	<b>In 6 Months.</b>	

### **WORK DETAIL:**

- I/O-Scheduling & termination of Instrument in **(PLC Based Control Panel)**.
- Cable Laying & Cable Tray Fitting As Per P & ID.
- Testing & Commissioning Of Control & MCC Panel.
- Testing and commissioning of 415 V, 50 Hz, 3 Phase AC Induction Motors
- **Flow-Plate Shifting, Erection & Installation**
- **All Mechanical tanks Shifting, Erection & Installation**
- **Utility with Process Piping Fabrication & Installation.**

## THERMAX LIMITED

(Dahej, Gujarat)

<b>Manpower Details</b>	<b>8</b>	<b>Project Details: - Panel Painting, Cable Laying &amp; Dressing Work. Application: - Chemical Industry.</b>
<b>Engineer</b>	<b>1</b>	
<b>Project Completed</b>	<b>In 1 Month</b>	

### **WORK DETAIL:**

- MCC Panel Painting.
- 250 Amps Feeder Modification With 25 x 6 Copper Busbar.
- Cable Laying & Dressing Work.

## **CETP, Vapi Gujarat**

(Dahej, Gujarat)

<b>Manpower Details</b>	4	<b>Project Details: - Green House Effect For Sludge Heating. Application: - Chemical Industry.</b>
<b>Engineer</b>	1	
<b>Project Completed</b>	<b>In 2 Month</b>	

### **WORK DETAIL:**

- MCC Panel Painting.
- 250 Amps Feeder Modification With 25 x 6 Copper Busbar.
- Cable Laying & Dressing Work

## **GUJARAT ORGANICS LTD-JHAGADIA**

### **WORK DETAIL:**

- Laying & Termination of HV-XLPE Type Power cables
- Installation of Jointing Kits for 440V XLPE/PVC Cables.
- Installation of Lighting DBs & Power DBs.
- Shifting & Installation of MCC Panel.
- Installation of Lighting pole.
- Testing and commissioning of 415 V, 50 Hz, 3 Phase AC Induction Motors.
- Cable laying for Underground Road Crossing Work.

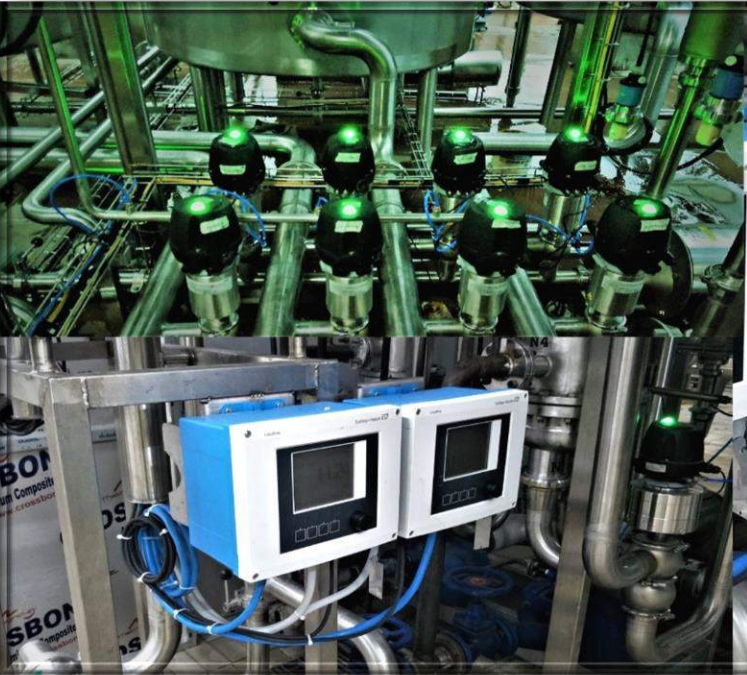
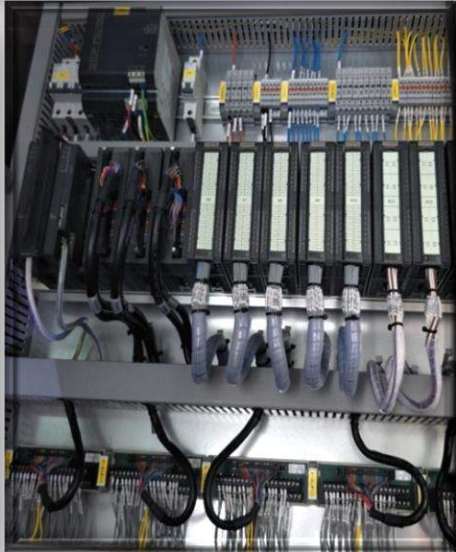
## **UPL-5-JHAGADIA**

### **WORK DETAIL:**

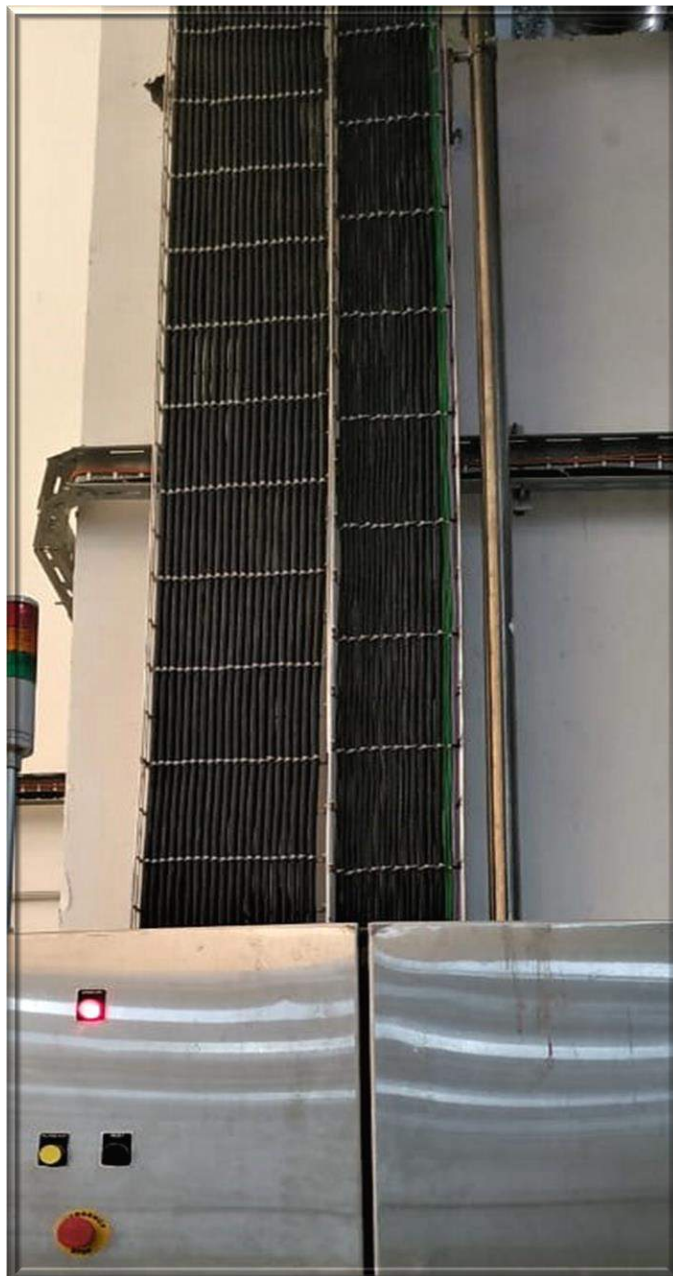
- Installation & Testing of Earth Pit by Coper Rod for Earthing grid in Power Plant.
- Testing of Earth Resistance.
- Megger Testing of Power Cables.



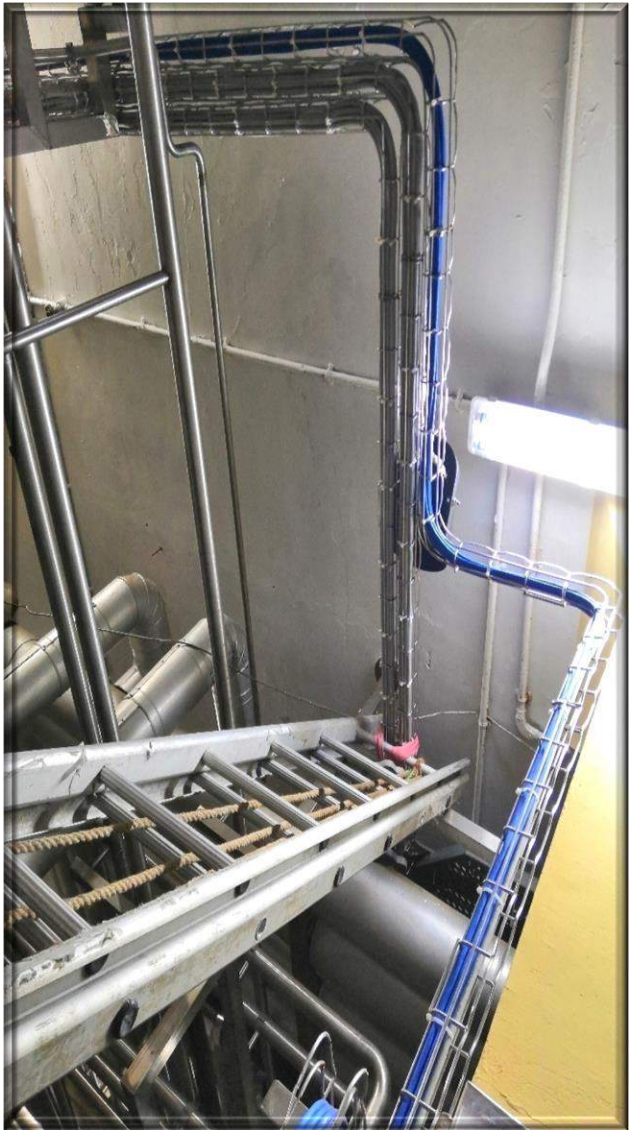
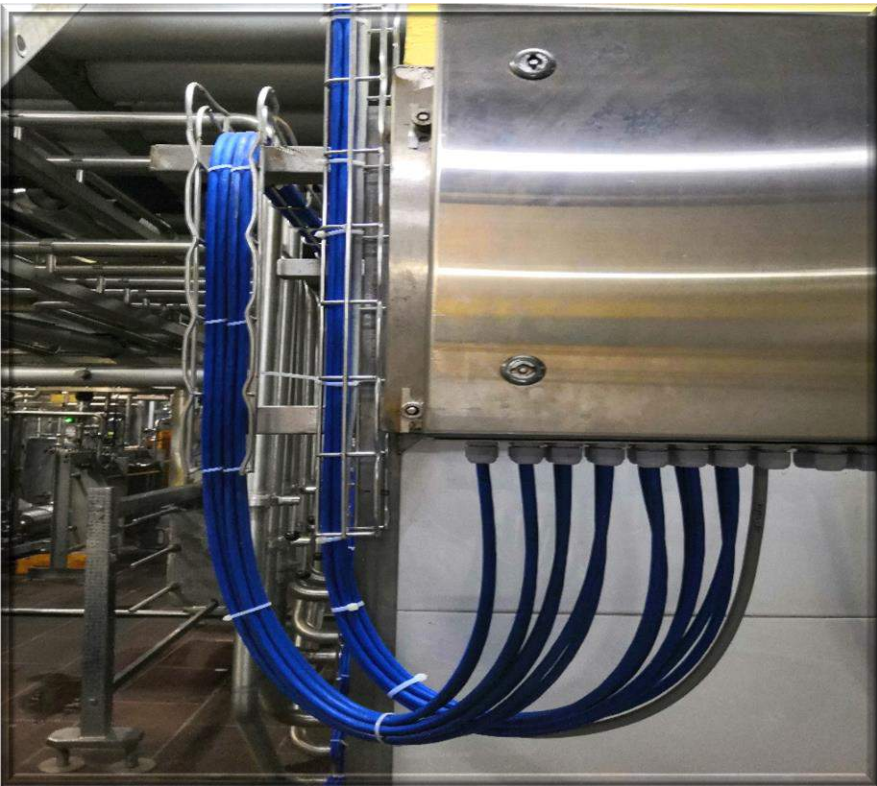
# Our Electrical Installation Work gallery:-













## Our Mechanical Installation Work gallery:-









# S.K ELECTRICAL

## SERVICES:

- All Types of Electrification work HT & LT
- All Types of Project And Maintenance Work.
- Control Panels, PCC, MCC & PLC Panels, Supply and Erection.



## MESSAGE :

- We Ensure That Our Work-Force Remains Focused on Delivering Project Incidents And Injury Free, Everyday.